

The Diocese of Manchester

St Chad's Church, New Moston

Parish Information and Profile



St Chad's Church
Hazeldene Road
New Moston
Manchester
M40 3GL



Just click to jump to the page

Summary ▶

Mission ▶

Gifts and skills ▶

Mission Partnership ▶

Your new home ▶

Church life ▶

Worship and tradition ▶

Figures for 2016 ▶

Ministry of congregation ▶

Local schools ▶

Local community ▶

Buildings ▶

Finance ▶

Summary

St Chad's is a small parish serving the community of New Moston.

Our worship is mainly traditional and Eucharistic, although we have more recently introduced all age worship on a regular basis.

Our style has been described as formal and liberal catholic, although ministers from other traditions regularly come and lead worship and find us to be an adaptable and welcoming group

We are hoping to find a leader who will bring to us the opportunity to develop a new vision which will help us to reach out across the community and lead us into growth. We believe that our new parish priest will need to have a passion to work with children and young families and also to be able to discern gifts from within the lay leadership and enable them for mission.

The parish reps and the PCC look forward to the journey ahead.

They look forward to rebuilding and strengthening the legacy of mission in the parish, in partnership with the new parish priest.

Title of post that is vacant:

Priest in Charge

Name of patron:

Dean and Chapter

Deanery:

North Manchester

Area Dean:

Rev Eddie Roberts

0161 740 2124

07792 419103

eddie@eddiroberts.net

Archdeacon:

Ven Karen Lund

0161 448 1976

archmanchester@manchester.

anglican.org

Church Wardens:

Stewart Oates

Cathy Stryczek

Parish Representatives:

Shirley Dickson

Chris Riley

Official population:

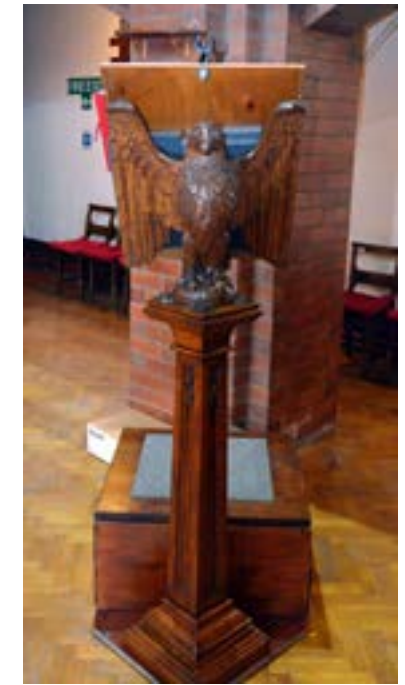
4000

Number on electoral role:

50

Church seating capacity:

120 plus 36 folding chairs



Statistics (last 12 months)

Average weekly attendance
of adults:

28

Average weekly attendance
of children and young people
under 16:

6

Regulars (for quota assessment):

32



Mission

Our Mission Statement is:

‘We, the people of St Chad, trusting in the power of the Holy Spirit, endeavour to be a community filled with the scriptures and rooted in prayer. Who will care for one another, serve our neighbour and witness to the redeeming love of God and in Jesus Christ’

Recent mission priorities - we are working towards a community space in order to make effective links for mission. We have secured a grant of £5,400 to convert a passageway into a new toilet and kitchenette which will enable us to use the building during the day when the halls are being used for the pre-school group.



Mission partnerships - in all of this we aim to be working with our sister church of St Mary's and the wider Mission Partnership, which we hope to take up our place in.

Strengthen relationships
with local schools, especially
New Moston Primary

Messy church

Community
groups



Developing
links

Mission
action plan

Stewardship
campaign

Mission
partnership

**These priorities will
guide our actions over
the next two years.**

Gifts and skills of our new leader

Organised

Understanding

Sensitive

Visible
presence

Enthusiastic

Enable
growth

Communicator

Gifts and skills

- ✔ Sensitive, understanding, enthusiastic.
- ✔ Be a visible presence in the parish.
- ✔ Organised, energise the PCC and congregation.
- ✔ Enable growth and vision.
- ✔ Be an excellent communicator with good interpersonal skills to enable leadership.
- ✔ Develop a mission action plan.

**These are our
'nice-to-haves' for
the ideal applicant.**

**Okay, so you might
not tick every box.
But we're hoping for
someone who has a
good combination
of these skills, and
aspires to the others.**

Mission Partnership

This year the PCC expressed a clear desire to join the Mission Partnership alongside St Mary's Moston together with the Blackley churches.

In 2012, the Victoria Avenue Mission Partnership (VAMP) was launched with the objective to make it a bit different.

Draft protocols were put together which bound the clergy team to levels of support in clergy absences and vacancy. The emphasis of the partnership is mission, with activities to date including: hosting a well-attended Alpha course, singing carols in the community, holding an event of witness in a local park and hosting Baptism preparation evenings with a team from across the partnership.

The clergy are cross-licensed across the 'team' and regularly meet to plan and pray, cover services, swap pulpits and provide support around all kinds of services including funerals.

The mission partnership started with three clergy for four parishes and the target in the deanery plan was to reduce to two clergy. The four-year partnership has worked really well in Blackley and has allowed Rev. Eddie Roberts and his team to support St Andrew's in vacancy and very recently he was installed as Rector.

What does the future hold?

Currently, the Blackley team plan services for all of the churches in the partnership, sharing liturgy and resources and have arranged staffing for most of the services at St Mary's for the coming months.

The team in Blackley consists of one incumbent, one second year curate, two associate SSMs, one second year placement student, four readers, two readers in training, one SSM in training and several ALMs who have varied and active ministries.

The reduction in clergy in Blackley will give access to diocesan funding for an administrator, which could possibly be extended across the whole partnership.

There is a strong desire in Blackley for closer links to be developed with the Moston part of the partnership. We look forward to working with the new incumbent and the congregation of St Chad's and St Mary's to strengthen the Mission Partnership and take it to the next stage of its journey.

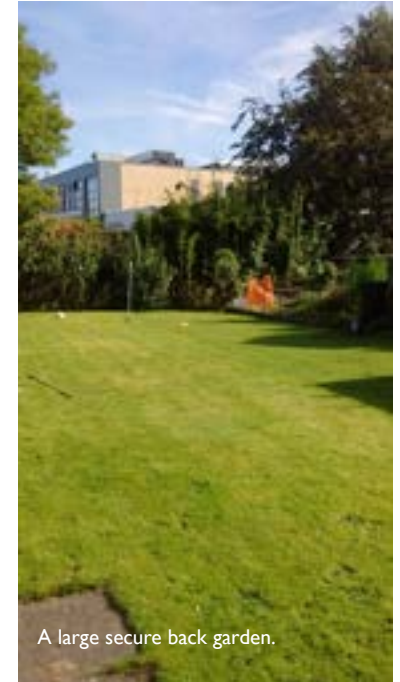


**Victoria Avenue
Mission Partnership
(VAMP)**

**St Peter's, St Paul's and
St Andrew's Blackley
Rev Eddie Roberts**

**St Mary's Moston
(position vacant)**

Your new home



A large secure back garden.

**The Rectory
47 Nuthurst Road
Moston
Manchester
M40 0EW**

The Rectory is a detached house, built around 1970 and is situated next door to St Mary's Church with access through a gate to the church grounds. Just five minutes up the road from St Chad's.

There are 5 bedrooms, a lounge, dining room, kitchen, bathroom, downstairs toilet and cloakroom area. There is also a separate study at the front of the house.

The rectory has large well maintained gardens to the front and back of the property, a double garage and large driveway.

The boiler is less than 5 years old and a new alarm system was fitted last year.

There is plenty of storage space including the loft, which is accessed by a fixed retractable loft ladder.

The previous incumbent has made sure that it is maintained to a high standard and has left carpets and curtains, to make it easier to move straight in.

Church life

We are keen to include all members of the community into the life of St Chads whether they worship with us or not. We have a dedicated hall space which we use for social events and outreach, together with a very flexible church building which can be used for other things besides worship.

Currently we offer space to a community group - Nephra, Fuzion Dance Troup and the Vine Playgroup,

Our own groups include Messy Church, Sunday worship for children, Saturday coffee mornings, Thursday coffee and toast mornings, and the PCC are looking forward to opening the church up to more community groups once the building work is complete.



Worship and tradition

We have one main act of worship on a Sunday at 9.45 am, which is usually a traditional service centred round the Eucharist and follows the Common Worship Lectionary

Vestments are worn for our more formal services.

We have a quiet said Thursday morning service where Holy Communion is celebrated, followed by a community drop in with refreshments.

Once a month we have an all age service (ALLSORTS service).



Figures for 2016



8

Baptisms



1

Marriage



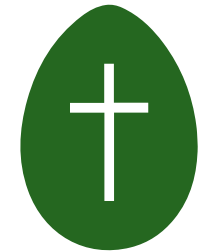
6

Funerals



41

Christmas communicants
(all services)



38

Easter communicants
(all services)

2

Parish Services
direct to
Crematorium

130

Total attending worship
during Christmas
(all services)

50

Total attending worship
during Easter
(all services)

The ministry of the congregation

The PCC acknowledges that there is work to do in the raising up of lay ministry, but in recent years we have launched a Messy Church, done excellent work with children's leaders who are key to the delivery of our monthly all age service.

We have two ALM's who have been commissioned in community work and children's ministry. 4 members of the children's team have completed the Bishops Certificate level 1.

We have a Baptism Team and a team of sides people.

The church has a PCC which functions well and has elected all of its officers.

Local schools

In the past the New Moston Primary School has taken up invitations to both 'Experience Christmas' and 'Experience Easter,' but more work is required to develop this relationship.

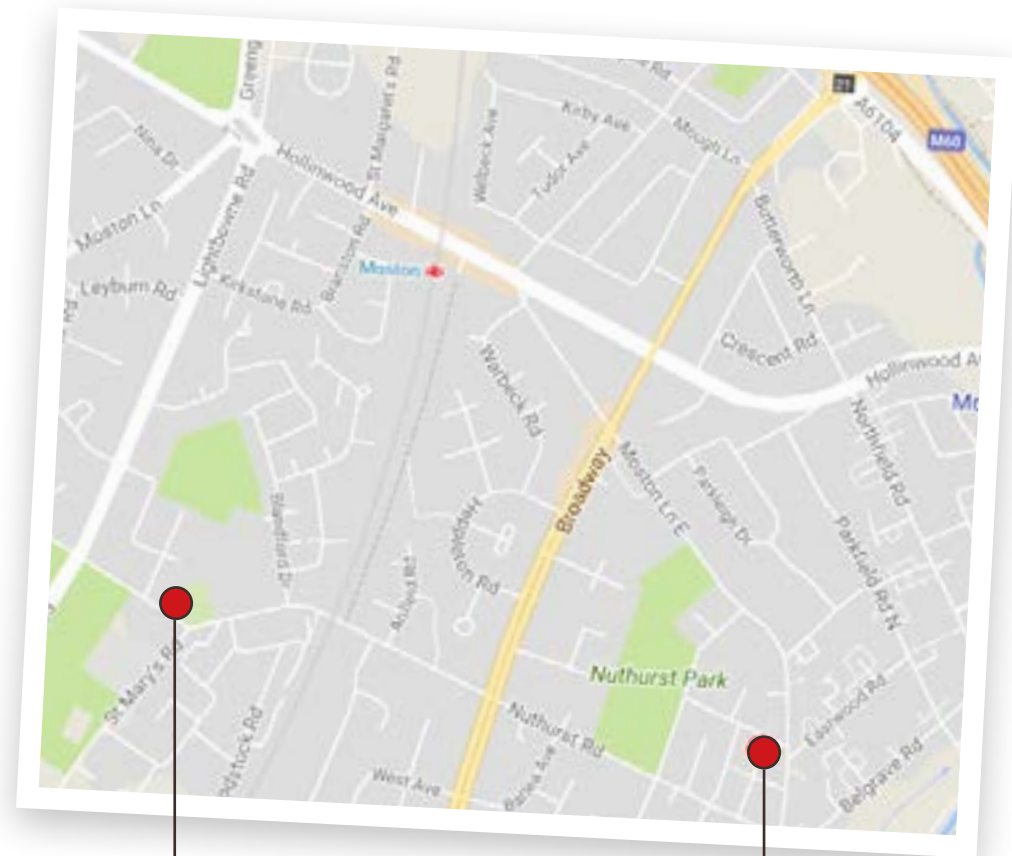


Local community

The area in which St Chad's Church is situated is mainly residential with properties spanning the 19th and 20th centuries, the majority being houses and some flats, both owner occupied and rented. There are a variety of small shops including newsagents, minimarket, bread shop, fast food shop, chemist and beauty salon. There is a doctors surgery, a garage, two pubs, one social club, a dance centre, a centre for adults with learning difficulties and a library. There is also a local park with a children's playground, football pitch and a tree lined grassed area.

The population is stable with a mixture of families and elderly residents.

Most residents are of white British heritage and a small proportion from different minority ethnic backgrounds.

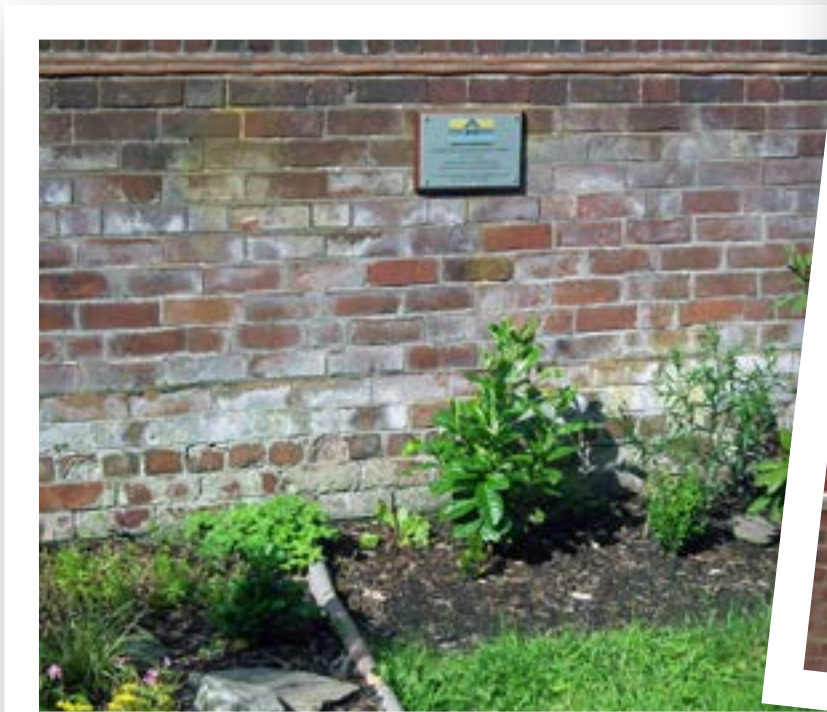


**St Mary's
and the rectory**

St Chad's

Building

Over the past year we have had the front garden consecrated for the burial of remains. Plans have been passed and work will commence soon on the new toilet and kitchen area.



Finance

In recent years we have paid our parish share in full although we acknowledge that we are not on a sound financial footing and a stewardship campaign is overdue.

The parish support a number of mission organisations, including the following:

Mustard Tree

Wood Street Mission

The Booth Centre

Toy Appeal from Wood Street Mission Premature Babies Unit

Christmas Tree Festivals

Christmas Fair

Experience Advent and Experience Easter Christmas Card Appeal

**2017
Parish Share
£16,500**

(on track for full payment
as at July)

**2017
PCC Income
£33,664**

(including £12K giving, £3K gift,
£9K rent and £4K fundraising)

**2017
PCC Expenditure
£30,345**

**2017
Surplus
£3,318**

**2017
Closing Balance
£18,956**

A full set of accounts are available
for inspection if they would be
helpful to anyone expressing an
interest in the post.