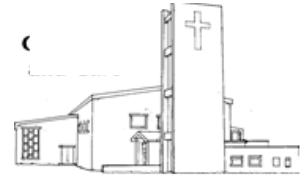


‘Christ The King’ a parish of Two Churches



**St Martin’s Church
140 Witton lodge Road
Perry Common
Birmingham
B23 5AP**



**St Margaret’s Church
Jarvis Road
Short Heath
Birmingham
B23 5RS**



Welcome!

We are delighted that you are considering this opportunity to join us at Christ the King - a parish of two churches—St Martin's and St Margaret's—serving two outer estates in Birmingham.

In 2004, St Margaret's joined up with its neighbour, St Martin's, Perry Common, to form a single parish: Christ the King, Erdington. There are still two worship centres, but we have one vicar and a single Parish Council.

The parish name of Christ the King is a symbol of unity and shared purpose; that we are one family under the reign of Christ. It honours each parish's past and also hopes of a shared future, called to be part of showing Christ's love to the community. Both churches have great worship areas which offer many creative possibilities.

St Martin's is well established in the community while at the same time looking to stretch out further as we respond to God's call to prayer, discipleship and generosity.



St Margaret's has always had families and children at its heart. The role here offers possibilities to work imaginatively and collaboratively with the local families to call those families back to God's care. Currently members of St Margaret's are worshipping at St Martin's on a Sunday morning.

We are praying for a priest who has a deep faith that inspires them, who is hopeful and grounded, full of empathy and compassion with some experience of the diversity of outer estate ministry.

Our Vision and Values

Whilst our parish is in a time of transition, we remain rooted in our desire to:

- Share the love of Christ with those around us
- Be present for people
- Grow new forms of church that speak to our context
- Build confidence and community
- Work in partnership with others for lasting impact

*Let
everything
you do,
be done in
LOVE*

1 Corinthians 16:14

Our Parish Context

We serve two estate communities in Birmingham, both shaped by poverty, high levels of social isolation, and a history of underinvestment.

Confidence is low—for individuals, for the community, and for the church. But we believe that in these very places, the Gospel has the power to speak with clarity and hope.

There are faithful people here. There is kindness and resilience. There is hunger for belonging and meaning.

We are a parish **in need of renewal**—but also **ready for it**.

Weekly Services



We have one service at St Martins at 10.30am. This is usually a service of Holy Communion.

During the vacancy we have enjoyed the occasional Service of the Word lead by local Readers or ourselves. Attendance is around 15/20 people.

St Martin's

St Martin's is currently the more active of the two churches. A small but committed congregation worships weekly. Most are older members, many with long-standing ties to the area.

The church building is a significant community asset. It hosts:

- A well-regarded **Social Care Project** serving the community with compassion and consistency
- A **local school** that uses space within the building
- **Urban Devotion Birmingham**, a Christian charity working relationally with young people and families in the area



These partnerships have helped maintain our presence in the community, even as our numbers have declined. There is good will and strong potential here for mission and growth.

St Margaret's

St Margaret's currently does not have a regular worshipping community. Several members have transitioned to St Martin's.

The building, however, remains in regular use, offering:

- Rental income and community impact through **Roselea Day Centre**, a care facility for older adults
- The **Guides** and **Brownies**
- A history of community presence, including a former **Place of Welcome**
- A visible and respected space within the estate, with opportunity for **revitalisation**



Urban Devotion have supported work here with families in the past. There is real potential for this church to be reimagined—either through planting, partnerships, or a new missional initiative that meets local needs.



St Martins Social Care Project

St Martin's Social Care Project (SCP) is a registered charity ran full time by the Community Development Practitioner. The SCP supports the lonely, isolated, bereaved, and vulnerable over 50 and those vulnerable under 50 in the local community, many with disabilities, learning difficulties and mental health issues. We do not have volunteers; it is Asset Based Community Development (ABCD) Everyone that comes through the door is welcome and bring their skills and assets and everyone supports one another. It is their space!! Our activities keep these people active, healthy (physically and mentally), and keeps them connected with others. Friendships are built and relationships made that are then taken beyond the walls of the project and back out into the community. This is reducing isolation in the



community and preventing mental health issues deteriorating into health conditions requiring NHS intervention. Our building is accessible to all and if you want to join in, you just turn up... no booking required.



- Place of Welcome
- Community Craft Group
- Community Shed
- Exercise Class
- Charity Shop
- Baked Potato & Bingo
- Buffet & Boogie



Strengths and Challenges

Our Strengths

- **We pay common fund... Financial sustainability** through building rentals and the Social Care Project.
- **Community presence** through St Martin's Social Care Project
- **Partnerships** with Local schools, Urban Devotion and Roselea Day Centre
- A **faithful congregation** open to new possibilities
- **Buildings in use**, serving practical and social needs
- **Potential** at St Margaret's for someone with vision for children and families, to get them on a journey of faith with us.



Our Challenges

- Low numbers at St Martin's, mostly older congregation
- No current congregation at St Margaret's
- Low confidence within both churches and wider community
- Poverty, social isolation, and a sense of being forgotten
- The need to **rebuild vision, confidence, and capacity** for mission

The Priest We Are Praying For

We are seeking a priest who:

- Has a missional heart and understanding for people and estates ministry.
- Willing to work with others in the Erdington Oversight Area and with the Diocese.
- Is rooted in prayer and Scripture, and able to lead others in spiritual growth
- Has the resilience and realism needed for this kind of context
- Can equip and release others, identifying and nurturing gifts
- Is willing to try new things without fear of failure

“We need a Vicar who will help us to grow in love for God through worship, prayer and Bible study; someone who would also help us to grow in love for each other and the local community by building on the secure foundations we already have. We need a fresh vision of Jesus and His Kingdom here in North Birmingham.”

What We Can Offer

- A financially stable parish, thanks to community partnerships and lettings
- A congregation that is faithful, open, and prayerful
- Buildings in good use, with opportunity for further development
- A well-established Social Care Project already impacting lives
- A history of established partnerships with local schools, Urban Devotion and Witton Lodge Community Association.
- Support from the PCC, and a willingness to try new things
- An opportunity to shape the future of both churches
- Being part of a missional and collaborative Oversight area

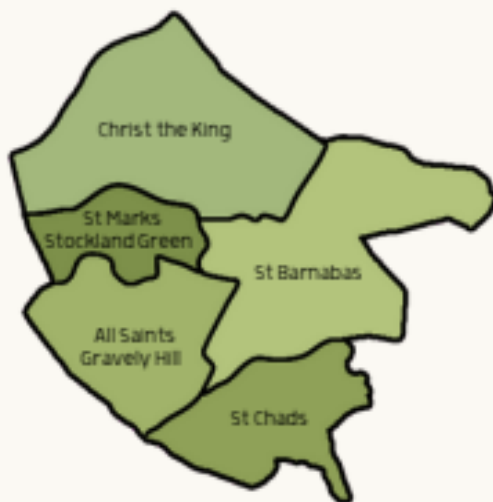
Mission with the Oversight Area





Erdington Oversight Area

VISION STATEMENT



Formed in August 2023, we are a group of churches who have agreed to collaborate in mission across Erdington, Stockland Green, Perry Common and Short Heath – a vibrant, creative, and diverse area to the north of the city. We have come together because:

- **We love Jesus.**
- **We love our local community.**
- **We believe in the transforming power of Jesus' love.**

Our styles of worship and theological traditions are varied, but we are united by our commitment to serve our local communities.

Each of our churches engage in different ways:

All Saints Gravelly Hill: hosts and organisers of the Spaghetti Food Pantry and Warm Welcome.

Christ the King: a parish of two churches – St Martins runs a Place of Welcome and offers a range of community activities throughout the week, including a Community Shed. It also hosts Oscott Academy, an alternative education centre, and partners with Urban Devotion Birmingham in missional activities for children and young people. St Margarets hosts a Place of Welcome, the Brownies and Roselea Day Centre.

St Barnabas: an Inclusive Church located on Erdington's busy high street, running a Community Hub throughout the week with a wide range of activities.

St Chads: a Local Ecumenical Partnership with the Methodists, offering regular activities such as weekly coffee mornings, a Food Club, and Warm Welcome.

St Marks Stockland Green: currently a building with no Anglican congregation, but with great potential for a church plant.

We have an emerging vision for the area which is based around engagement with:



Children, Families and Young People to create a safe space for them to explore faith. Our key partner in this is Urban Devotion Birmingham.



Schools in the area, with the hope that every church will have prayer spaces at Easter and Christmas and invite primary schools to take part in them.



Those enquiring about the Christian faith by holding joint Christian basics, enquirers, and Lent groups.



Our communities through every church being involved in projects that serve our local communities through partnership working with other groups (e.g. MIND, Shelter, Erdington Litter Busters, Witton Lodge Community Association, to name a few).

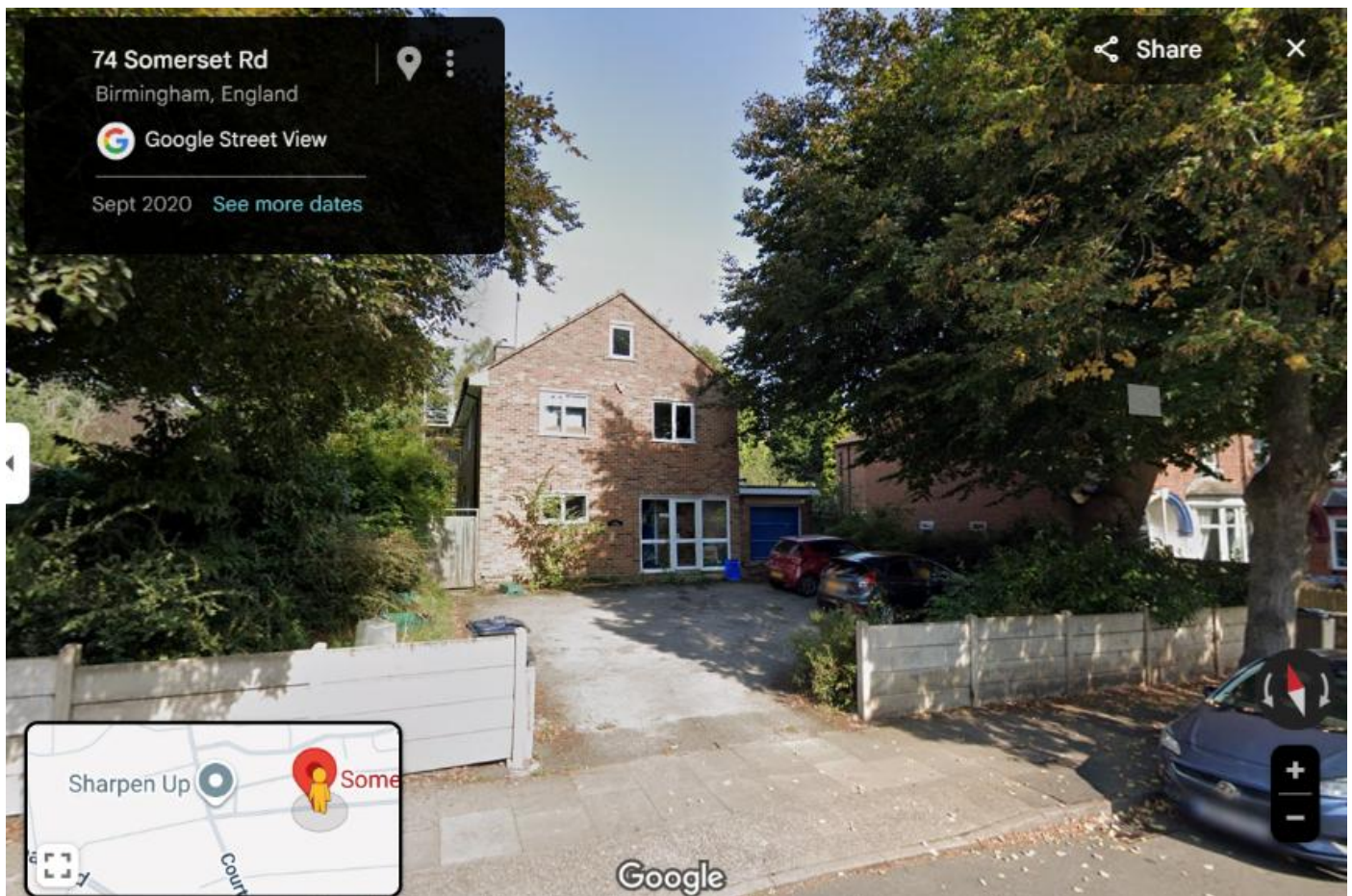


Prayer by committing to a variety of ways of praying together, including our bi-monthly Ecumenical prayer gathering with Churches Together in Erdington, prayer walking in the area, termly Quiet Mornings (creative and contemplative prayer at St Barnabas Church), and hosting Taizé prayer.

Our oversight minister is Revd Emma Sykes, Vicar of St Barnabas. Her role is to enable the churches in the area to support each other and work together in mission. All will be assured of a warm welcome, support (both practically and in prayer), and a commitment to work together so that all our churches can grow and flourish.

The Vicarage

- The vicarage is located on Somerset Road, Erdington B23 6NQ just behind St Margaret's Church.
- Transport links are good, and Birmingham City Centre is within reach.
- The parish is part of the Aston and Sutton Coldfield Deanery



The vicarage has:

- 4 bedrooms
- A bathroom upstairs and separate toilet
- A lounge
- Dining room
- Study
- Kitchen
- Downstairs toilet
- Utility
- Garage
- Garden



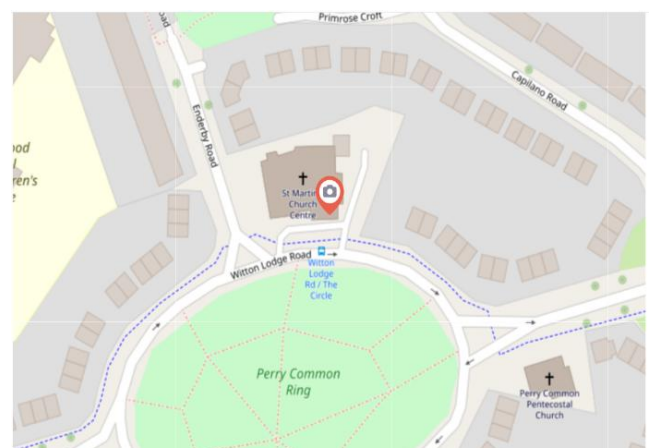
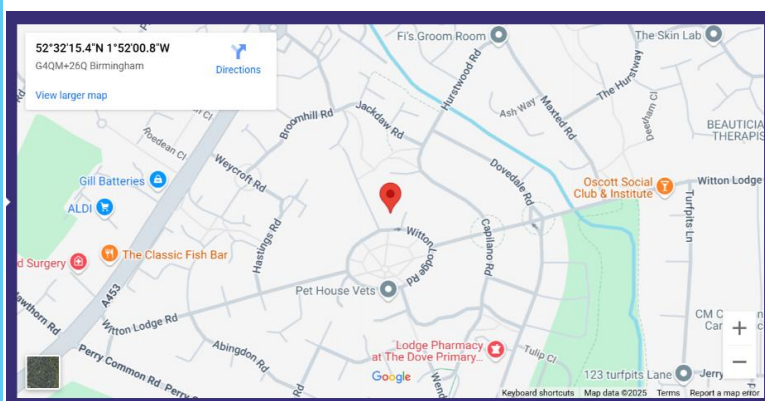
Appendices

- Photos of both church buildings and where they are on the map
- Community partners

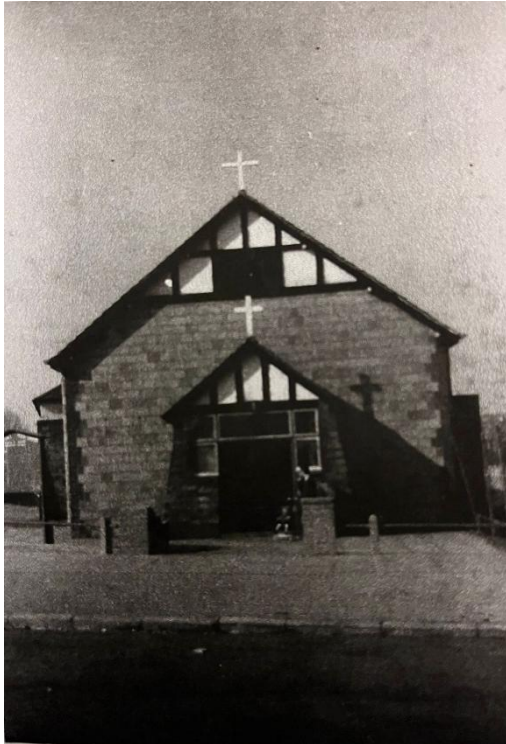
St Martin's in Perry Common is located on The Ring, on Witton Lodge Road...



Shops around The Ring



The original **St Martin's...**



These photos were taken in the late 60's

This one was taken post 1975



...and St Margaret's in Short Heath on Jarvis Road.



Both churches are situated in the North of Birmingham with regular bus and train services into Birmingham, Sutton Coldfield, Erdington and Kingstanding.

St Margaret's



Short Heath was originally farmland and small holdings. Extensive building followed the arrival of the railway in 1862. St Margaret's Church was dedicated in February 1909 as a daughter church of St Barnabas, Erdington, and is in Aston Deanery, Diocese of Birmingham.

The original building survives as a Church Hall, which is

now on long term lease to Roselea Day Care, that provides a high level of services for adults with a disability or learning disabilities.

The early 1970's saw much local housing development by Birmingham City Council. To cater for this expansion locally, a new larger church building was opened in January 1975.



FRONT



BACK



Community
and Care



TRANSFORMING COMMUNITIES ONE LIFE AT A TIME

Urban Devotion Birmingham (UBD) is an independent charity to reach out to young people in the area. It is based in the Underground, part of St Martin's, and in Hope House, next door to this. UBD runs a number of activities throughout the week.

<https://www.urbandevotion.org/>

Perry Common

Back in 2003 Perry Common and the surrounding area once had the highest juvenile crime rate across Birmingham. Through prayer, partnership and positive relationships UDB have played their part in turning this around but there is still so much to do.

Their base here is Hope House and they run various activities from The Underground part of St Martin's Church.



Just up the road from Perry Common lies a collection of neighbourhoods surrounding Short Heath Park. New builds mingle with beautiful period properties, a 20th century sink estate and post-war high rises. Pockets of this area are in the poorest 1% across the entire nation but there is a vibrant and unmistakable sense of community. UBD run

street-based activities on the Topcroft estate and have supported the work of St Margaret's Church over on Jarvis Road.



Oscott Academy also uses and has a long-term lease for St Martin's Underground. It is a registered independent school that supports the learning of students in Key Stage 4 (Year 10 and 11). Oscott Academy prides itself on its pastoral approach, fostering an environment where students can develop and be part of the Oscott Academy family.

They support students with diagnoses of ASD, ADHD, ADD and anxiety, in addition to those who display symptoms of SEMH. They also support vulnerable students who have struggled to learn in a mainstream setting.

Oscott Academy has been graded as an Outstanding school and is located in the Underground part of St Martin's Church



Yes... there is a sports hall underneath the church!!



<https://www.oscottacademy.co.uk/>

