

## The Parish of St Mary's, South Elmsall and St Margaret's North Elmsall



### Parish Brochure

**Welcome to the vibrant and welcoming parish of St. Mary's South Elmsall and St. Margaret's North Elmsall, where faith, community, and service intertwine to create a nurturing environment for all.** Nestled in the heart of our towns, our churches stand as beacons of hope and connection, reflecting the rich tapestry of our shared history and diverse congregation.

At St. Mary's, we embrace a deep-rooted tradition of worship, celebrating the beauty of our Anglican heritage while fostering an inclusive approach to ministry. Meanwhile, St. Margaret's offers a warm and inviting space, where every individual is valued and encouraged to grow in their faith journey; a highlight of St. Margaret's worship is its choir which is committed to maintaining the rich traditions of the Anglican Church.

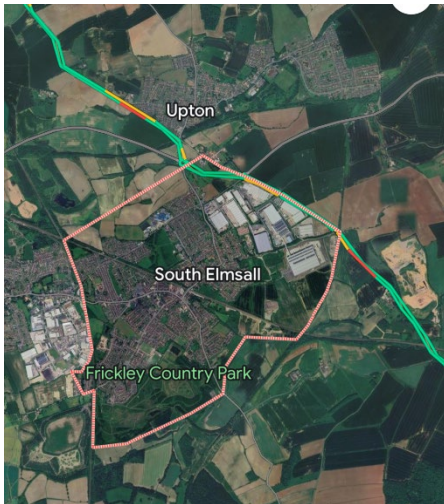
Together, we are committed to serving our local community, reaching out to those in need, and creating opportunities for spiritual growth and fellowship. As we look to the future, we invite you to explore our vibrant parish life, where every voice is heard, and every heart is welcomed. Join us in discovering how we can continue to be a source of light and love in South and North Elmsall.

The fact that you are reading this, indicates that something has led you to consider whether this might be for you.

We hope this brochure will enable you to learn a little more about us and about our parishes. Please consider the documentation and then, if that feeling is still here, please do get in touch.

We are praying for the right person and you might be the answer to our prayers.

## South Elmsall and North Elmsall:



South Elmsall and North Elmsall are historic villages with a deep sense of community. Situated approximately 9 miles from Wakefield and 9 miles from Doncaster, both villages offer a blend of rural charm and accessibility to larger towns and cities. The combined population is around 7000, with a mix of families, working professionals, and retirees. Both communities have a rich industrial heritage, and while they retain their village atmosphere, they are also experiencing gradual development and modernisation.

The town is most famous for its coal-mining past; it was the site of Frickley Colliery, which was one of the largest deep coal mines in the United Kingdom. The colliery

invested in several improvements that were of benefit to the area, including the building of the Warde Aldam Hospital, as well as swimming baths and sports facilities. The colliery was closed on 26 November 1993 following closures of nearby pits like Ferrymoor-Riddings (1985), Kinsley (1986), South Kirkby (1988) and Grimethorpe (1992). In 1998 the UK Government's "Social Exclusion Unit" published a series of "Policy Action Team" reports looking at issues of social exclusion. The Skills report used South Elmsall and surrounding towns as a case study and stated "The local communities still suffer from serious environmental, social and economic problems - and a crisis of morale - as a result of the loss of jobs in the mining industry".

### Local Amenities for St. Mary's South Elmsall and St. Margaret's North Elmsall

The parishes of St. Mary's South Elmsall and St. Margaret's North Elmsall are situated in a thriving community with a range of amenities that enhance the lives of residents and visitors alike. Here are some key local facilities:

1. **Schools and Education:** Both South Elmsall and North Elmsall are home to several well-regarded primary and secondary schools, providing quality education and opportunities for local families, local schools are Ash Grove, Carlton, Moorthorpe, Upton and Minsthorpe.
2. **Healthcare Services:** The area boasts accessible healthcare facilities, including local GP practices, pharmacies, and nearby hospitals, ensuring that residents have access to essential health services.
3. **Parks and Recreation:** The towns offer various parks and green spaces, perfect for leisurely strolls, community events, and family activities. These spaces foster a sense of community and provide areas for outdoor recreation.
4. **Shopping and Dining:** A mix of local shops, cafes, and restaurants can be found in both towns, offering a variety of options for dining and retail. Regular markets provide opportunities for local produce and goods.
5. **Public Transport:** Well-connected by public transport, both parishes benefit from bus and train services that link them to nearby towns and cities, making it easy to explore the wider region.
6. **Community Centres:** Local community centres offer a range of activities, classes, and events that cater to all ages, promoting engagement and connection among residents.
7. **Cultural and Historical Sites:** The parishes are rich in history, with local landmarks and heritage sites that reflect the unique character of the area, providing opportunities for exploration and education.

These amenities contribute to a vibrant community life in St. Mary's and St. Margaret's, making the parishes a welcoming and supportive environment for all.

**Shared Worship and Fellowship:** While each church has its distinct identity, we regularly come together for joint services and events, fostering a sense of unity and shared purpose. Both congregations are committed to inclusivity and welcoming people from all backgrounds and walks of life.



**St. Mary's is the Parish Church** and was consecrated in 1910 to serve an increasing mining population. The church is known for its traditional worship, strong musical heritage, and active engagement in the community. St. Mary's plays a key role in local outreach, hosting events, supporting local charities, and partnering with schools and community groups. The church building, a historic structure with modern facilities, serves as a hub for both spiritual and social activities in the town and the changing needs of our congregations and wider communities.



## **St. Mary's Little Lambs Parent and Toddler Group, South Elmsall**

St. Mary's Church is proud to host the Little Lambs Parent and Toddler Group, a lively and nurturing space where young children and their parents or caregivers can come together to play, learn, and build lasting friendships. This group is a vital part of our church's outreach and community engagement, offering a warm and welcoming environment for families in South Elmsall and the surrounding area.



### *A Safe and Welcoming Space*

Little Lambs is designed to be a safe, friendly, and inclusive space where both children and adults can feel at home. Every week, we open our doors to a diverse group of parents, grandparents, and caregivers, along with their little ones, providing a relaxed setting where everyone is welcomed with open arms. Our group is not just about the children; it's also a supportive community for the adults who care for them.

### *Activities and Playtime*

Our sessions are filled with a variety of activities that are both fun and educational. For the toddlers, there are plenty of toys, games, and crafts that encourage creativity and development, from painting and playdough to building blocks and storytime. These activities are designed to stimulate young minds, helping children to develop important social and motor skills in a playful, engaging way.

We also include a time for singing and music, which is always a highlight of the morning. The children love joining in with nursery rhymes and action songs, and it's a great way for them to learn new words and movements. At Little Lambs, we believe in the power of play to help children grow and learn, and we strive to provide a variety of experiences that cater to different ages and interests.

### *Support and Fellowship*

For the parents and caregivers, Little Lambs offers a space to relax, share experiences, and find support. Parenting can be challenging, and our group provides a network of encouragement and friendship. Over a cup of tea or coffee, adults have the opportunity to chat, share advice, and enjoy some much-needed time out, knowing their children are in a safe and caring environment. This aspect of fellowship is central to the group, and many lasting friendships have been formed within our community.

### *Our Mission*

The mission of Little Lambs goes beyond just providing a playgroup; it's about building connections within our community and offering a space where families can experience the love and care that St. Mary's Church is known for. Through this group, we seek to reflect Christ's love by welcoming everyone, regardless of background or belief, and creating an environment where every child and parent feels valued and supported.

### *Looking to the Future*

As part of our ongoing commitment to serving the community, we are always looking for ways to grow and improve Little Lambs. We hope to expand our activities, involve more volunteers from the church, and reach even more families in the area. Whether it's through special events, seasonal activities, or simply providing a consistent and reliable space each week, we are dedicated to making Little Lambs a cornerstone of our ministry at St. Mary's.

### *Conclusion*

St. Mary's Little Lambs Parent and Toddler Group is a cherished part of our church's outreach, bringing joy, support, and a sense of community to families in South Elmsall. As we look to the future and seek new leadership in our parish, we are excited about the continued growth and impact of this group. Little Lambs not only nurtures the youngest members of our community but also strengthens the bonds between families and our church, creating a foundation for lifelong relationships with God and each other.

### **Messy Church at St. Mary's, South Elmsall**

At St. Mary's Church, South Elmsall, Messy Church is one of our most vibrant and engaging ministries, designed to bring families together in a creative, fun, and faith-filled environment. Messy Church is a form of church for children and adults that involves creativity, celebration, and hospitality, and it's one of the ways we reach out to families in our community, offering them a chance to explore faith in a relaxed and informal setting.



### *What is Messy Church?*

Messy Church is all about creating a welcoming and informal space where families can experience church in a new way. It's not a traditional service but rather an interactive and dynamic form of worship that includes a variety of activities designed to be engaging for all ages. Whether through crafts, games, stories, or music, Messy Church helps participants connect with biblical stories and Christian teachings in a hands-on and accessible manner.

### *Creative Activities and Learning*



Each session of Messy Church at St. Mary's revolves around a theme or Bible story, which is explored through a range of creative activities. These might include arts and crafts, painting, model-making, or even baking—anything that allows families to express themselves and explore the theme in a fun and meaningful way. The activities are designed to be inclusive, ensuring that everyone, from toddlers to grandparents, can participate and enjoy themselves.

These creative sessions are not just about making things—they're about making connections. Through these activities, families can engage with biblical messages in a way that is

understandable and relevant to their daily lives. It's a great way to introduce children to Christian teachings in a way that is both fun and memorable.

#### *Celebration and Worship*

After the activities, Messy Church at St. Mary's always includes a time of celebration. This is a short, informal worship session where we gather together to sing songs, hear a Bible story, and pray. The atmosphere is relaxed and joyful, making it easy for families who might not be familiar with traditional church services to feel comfortable and included. This time of worship helps to bring the theme of the day to life and offers everyone a chance to reflect on what they've learned.

#### *Hospitality and Community*

Hospitality is a key part of Messy Church. We believe that sharing a meal together is an important way to build community and make everyone feel welcome. At St. Mary's, we usually end our Messy Church sessions with a shared meal or refreshments, providing an opportunity for families to sit down together, enjoy some food, and continue their conversations. This time of fellowship is a crucial part of the Messy Church experience, fostering relationships and creating a sense of belonging.

#### *Outreach and Inclusion*

Messy Church is one of our most effective forms of outreach, particularly for families who might not attend regular church services. It's open to everyone, regardless of background or church experience, and provides a welcoming environment where families can explore faith together. Many who come to Messy Church find that it's a stepping stone to deeper involvement in the life of St. Mary's, whether through other family activities, Sunday services, or community events.

#### *Looking Ahead*

As we continue to develop Messy Church at St. Mary's, we are excited about the opportunities to reach more families and deepen our connections within the community. We hope to expand our activities, involve more volunteers, and introduce new themes that speak to the needs and interests of our families. Our vision is to make Messy Church a cornerstone of our ministry, a place where faith is lived out in fun, creativity, and community.

Messy Church at St. Mary's, South Elmsall, is a joyful expression of our commitment to being a church that is open, welcoming, and relevant to all ages. It's a place where families can come together to explore faith in a way that is fun, creative, and meaningful. As we look to the future and seek new leadership, we see Messy Church as a vital part of our parish's mission to engage with the wider community and nurture faith in the next generation. We invite everyone to join us in this exciting ministry and to be part of the vibrant life of St. Mary's.

We have had a Messy Church here at St Mary's for nearly 10 years and run a session one Saturday a month 2pm till 4pm. We have also had a chance to pilot Messy Church Goes Wild which happened at half term this is outdoors, taking walks to our local country park Frickley, going to an Allotment and planting our own flowers and produce here at St Mary's.

**St. Margaret's Church, North Elmsall:**

St Margaret's Church, the gift of Mrs Georgina Longville Jones, was consecrated on the 9<sup>th</sup> November 1897 as a Chapel of Ease for the people of North Elmsall. Their Parish Church was All Saints South Kirkby several miles away. Mrs Jones also presented the church with an organ in 1903 and the magnificent reredos in 1908, the year she died.



Worship at St Margaret's is characterised by a sense of reverence and a commitment to maintaining the rich traditions of the Anglican Church. The church is blessed with a dedicated and talented choir that plays a vital role in our worship and church life. The choir is not only a musical ensemble but also a close-knit community within our congregation, united by a shared love of music and a commitment to enhancing the spiritual experience of our services.

*St. Margaret's Choir in North Elmsall* is a dedicated and vibrant group that plays a key role in enriching the worship life of our parish. With a warm blend of voices, our choir leads congregational singing and provides special musical contributions during services, making each liturgical celebration at St. Margaret's an inspiring and memorable experience. The choir is an integral part of our Sunday services, feast days, and special events, and it offers both traditional and contemporary music that resonates with our parish community.

Under the guidance of our committed choir director and organist, the members meet regularly for rehearsals, working on both new pieces and familiar hymns. This dedication reflects the choir's commitment to excellence and its desire to bring spiritual depth to our worship through music. The choir welcomes singers of all ages and skill levels, fostering a strong sense of community and encouragement among its members. Participation in the choir not only strengthens vocal and musical skills but also builds lasting friendships rooted in shared faith and ministry.

In addition to regular services, St. Margaret's Choir often participates in special events, such as Christmas carol services, Easter celebrations, and community gatherings, where they reach a broader audience. The choir's musical offerings are known to uplift and inspire, and they are a cherished part of our church's outreach and mission.

We see the choir as an opportunity for individuals to express their faith through music, to enhance our parish's worship experience, and to connect with others in meaningful ways. Whether leading hymns or performing anthems, the choir at St. Margaret's is dedicated to glorifying God and serving the congregation with passion and joy.



We recruit from the 5 local schools Upton, Moorthorpe, Ash Grove, Carlton and Badsworth.

Choir members are trained for exams, until recently they were entered for the RSCM awards, but now we use the Diocese of York Choral awards. Recently, three of our choristers have been BBC Choristers of the Year finalists.

### **Church Attendance at St Mary's South Elmsall and St Margaret's North Elmsall**

Both churches have experienced some fluctuation in attendance over recent years due to changing community demographics and wider societal change, we remain committed to finding new ways to serve and engage our parishioners, inviting them into our life of worship. Through regular services, community outreach, and special events, we aim to continue strengthening the spiritual life and community bonds at both churches.

### **Church Services**

Our Sunday morning service at St Mary's is the cornerstone of our worship week, celebrating the Eucharist, praying and reflecting on Scripture. The service follows a traditional Anglican liturgy enriched with hymns and music that create a reverent environment. The service features incense and processions. An additional Wednesday noon spoken Mass provides the faithful with a quieter more contemplative space for prayer and reflection.

St Margaret's offers a rich tradition of worship through its Evensong and Book of Common Prayer (BCP) services. The sung Evensong at St Margarets is led by our choir. The church is attended by a small but loyal congregation. Together these services at St Margaret's are treasured aspects of our shared church life.

### **Funerals and Weddings**

Many funerals are held each year at St Mary's. We are hoping that the new incumbent will engage with the local community so that the church is more utilised as a wedding venue.

Not many funerals or weddings are held at St Margaret's. Presently, the nearby village of Upton, which is only a mile away (and doesn't have an Anglican witness), is an area that is underserved by the wider Church and needs engagement. The traditional architecture of St Margaret's provides a stunning and inspiring backdrop for ceremonies.

## **St Mary's Parish Hall**

Nestled adjacent to St. Mary's Church, the Parish Hall in South Elmsall serves as both a home and a hub of ministry for our parish community.

### *A Warm Welcome*

The Parish Hall embodies the spirit of hospitality, providing a warm and inviting environment for parishioners and visitors alike. It serves as a gathering place for various church activities, meetings, and events, ensuring that all feel included and valued.



### *Support for the Vicar and Ministry Team*

The Parish Halls play a crucial role in supporting the leadership and ministry of St. Mary's. It offers a space where the vicar can engage with the community, provide pastoral care, and nurture relationships within the parish.

### *Spiritual Growth and Reflection*

The Parish Hall provides a serene environment for spiritual reflection and growth. It hosts small group gatherings, and Bible studies, encouraging parishioners to deepen their faith and foster a sense of belonging. This nurturing space is where individuals can seek guidance, support, and fellowship in their spiritual journeys.



### *A Vision for the Future*

As we look to the future, St. Mary's aims to continue being a beacon of hope and service in South Elmsall.

In summary, St. Mary's Parish Halls are a vital part of our parish life, dedicated to nurturing faith, fostering community, and supporting our mission to serve both God and our neighbours.

**The church hall** has recently been modernised and consists of a main hall with a lesser hall, kitchen and meeting room.

## **Our Vision and Mission**

As a united parish, we are committed to:

*Worship:* Offering vibrant, meaningful worship that draws people closer to God and reflects the diversity of our community.

*Outreach:* Engaging with our local communities through service, outreach programs and partnerships that address local needs and build relationships.

*Inclusivity:* Creating a welcoming environment where everyone feels valued and included, regardless of age, background, or life experience.

*Community:* Strengthening the bonds between North Elmsall and South Elmsall through shared activities, worship, and a common mission to serve.

## **Our Next Vicar**

We are seeking a vicar who will:

- Be a unifying presence, fostering collaboration and a shared vision between St. Margaret's and St. Mary's while respecting the unique identity of each congregation.
- Have a deep pastoral heart, offering support and care to individuals and families, and guiding us through times of joy and challenge.
- Be an inspiring leader, with the ability to engage and energise the congregation, encouraging active participation in worship and church life.
- Demonstrate a strong commitment to outreach, especially with schools and young people, and with a passion for engaging with the local community and addressing social issues. And have a desire to use Social Media as a means of outreach.
- Bring a creative approach to worship, balancing traditional Anglican liturgy with innovative expressions of faith that resonate with all generations. Value inclusivity and diversity, ensuring that our churches are places where everyone feels welcomed and loved.
- Reach out to the local communities of Minsthorpe and Upton, neighbouring villages to North Elmsall which don't have an Anglican witness.

## **Vicarage**

The five-bedroom vicarage is located in South Elmsall, within walking distance of a host of shops and amenities as well as the train station. The accommodation is set over three floors and offers an abundance of space with traditional features and high ceilings. Outside to the front is off street parking and a separate garage with a fenced and walled garden. To the rear is an enclosed garden.



## **Conclusion**

St Mary's South Elmsall and St. Margaret's North Elmsall, are two churches with a shared mission and a bright future. We are looking for a vicar who can guide us in our journey of faith, helping us to grow both spiritually and as a community. We offer a supportive and loving environment, a strong foundation of faith, and a congregation eager to embrace new leadership and opportunities for growth.

Together, we look forward to welcoming a new vicar who will walk with us, inspire us, and lead us into the next exciting chapter of our parish life.

*“Let us not become weary in doing good, for at the proper time we will reap a harvest if we do not give up.” — Galatians 6:9*