

# The Fountains Benefice

The Benefice of Fountains features a group of four parishes in the Ripon Episcopal Area and forms part of the Ripon Deanery. It is made up of the parishes of:

**Fountains**, comprising the three churches of Aldfield, Sawley and Winksley;

**Grewelthorpe**, which is a Local Ecumenical (Anglican-Methodist) Partnership;

**Kirkby Malzeard with Dallowgill**, comprising the parish church and the Chapel of the Resurrection;

**Mickley**, the smallest of the four parishes.

We are a rural benefice lying to the west of the cathedral city of Ripon, sitting in beautiful Yorkshire Dales countryside and encompassing the World Heritage Site of Fountains Abbey and Studley Royal. In addition to the main villages



there are a number of smaller settlements and farms across the area. The total population is around 3,000. The land is well looked after, with cattle, sheep and some arable farming and management of moorland. There are various businesses located in the area, ranging from services necessary for local residents to holiday accommodation and caravan sites. While some people work from home, others commute to Harrogate, Leeds, Teesside and further afield.

Our mission strongly echoes that of the diocese: to “enable confident Christians to live and tell the Good News of Jesus Christ”. There is a strong sense of local community and rural tradition, but we are an outward-looking benefice, welcoming the many people who come to live in the area.

We attempt to ensure good internal communication across the benefice by email, our website, a weekly pew sheet and the monthly Fountain magazine which is normally delivered to each house in the villages. The coronavirus lockdown has pushed us to think harder about our communications and to make more use of the internet. There is a strong sense that the past few months have led to a greater sense of togetherness across the benefice.

The Church here is seen as an important and relevant part of rural life, with the wider community feeling an attachment to their local churches. Although there is a long history of working as multiple parishes, dating back in some cases to before 1990 when the current Benefice was formed, we recognise the need for fresh vision and thinking and seek new ways of working in closer unity. This will allow us to address the changing needs of the Church and assist the incumbent (in post since November 2019) in the pastoral care and running of the benefice.

We hope very much that our new house-for-duty priest will be able to help us strengthen ties between different parts of the benefice and contribute to developing the discipleship of those coming from, and wanting to explore, different Christian traditions.

The schedule of services was reviewed to make them more manageable during the lengthy vacancy. There is a monthly united benefice service, which generally has some representation from each parish. Other services cater for different traditions and styles of worship, though those attending services are predominantly older. We are keen to encourage younger adults and families to join our worship and, while there are various initiatives for primary school-age children in the benefice, there is tremendous scope for these to be developed further.

During the coronavirus pandemic we have met online for worship in encouraging numbers, as well as providing an order of service for Sundays through email or on paper where required. A Bible study also takes place weekly via Zoom and a discussion group is starting in October. There is also a thriving benefice book group.

## *A summary of each parish*

### **Fountains Parish**

This parish was formed in 1974 and includes the churches in Aldfield, Sawley and Winksley as well as St Mary's, Studley Royal (managed by English Heritage).

The three churches work well together, and a good number of the congregation support services at all three churches. In addition to Sunday services there is a house group, Lent lunches in support of Christian Aid, and other fund-raising activities run by a small but dedicated team.



Winksley has a Parish Room which functions as a village hall, hosting meetings and social events and acting as a home for the very active Guides, Brownies and Rainbows. The primary school children from this part of the benefice mostly attend the C of E voluntary controlled Fountains School, in Grantley. Sawley and Grantley both have excellent village halls.



## **Grewelthorpe**

St James and the Methodist Church has been a successful ecumenical partnership since 2006. Worship is now in the Anglican church building. The former Methodist chapel has been refurbished as a much valued village hall and cafe, and the church has generous free use of it. The church congregation is extremely welcoming and everyone is encouraged to be involved in different aspects of church life as part of the discipleship of all.



Services are held in both traditions and there is a single Church Council dealing with both Anglican and Methodist business.

The G Club, for primary school children, meets in church and is an important part of our life. The village school is a C of E voluntary controlled school and is federated with Fountains School in Grantley. There are good links between Church and school but also much scope for developing these.

There are prayer, Emmaus and Exploring Faith groups as well as a ministry of cards, welcoming newcomers and sending 'get well' and sympathy cards to people in the community. A number of charities are supported on a regular basis.

## **Kirkby Malzeard with Dallowgill**

Kirkby Malzeard is the largest village in the benefice. In 2011 the church of St Peter's in Dallowgill was closed and the two parishes were brought together: St Andrew's in Kirkby Malzeard is now complemented by the Chapel of the Resurrection on the edge of Dallowgill, where services are held monthly in the summer and occasionally at other times.



St Andrew's has a number of special services during the year, including a Plough Service with the Kirkby Long Sword Dancers. The Footsteps group for primary school children meets monthly during the morning service and has an annual outing. Kirkby Malzeard village

has a C of E voluntary controlled school which is federated with that in West Tanfield, outside the benefice.

There are play and sports facilities within the village and the Mechanics Institute is a well-used village hall.

## **Mickley**

The church of St John the Evangelist serves the attractive village of Mickley with its population of around 90. The congregation comprises people from a variety of church backgrounds and we seek to worship together with a warm welcome for visitors and occasional churchgoers. Church life supports the commitment to growing in discipleship. There is a monthly Bible study group and other study sessions and courses are held during the year. There is committed support for a number of charities.



Children from the village travel to schools elsewhere in the benefice or in Ripon. What was the village school is now an attractive village hall, used for a wide variety of activities and social events, reflecting the strong sense of community in the village.

## *Accommodation*

1 Hazel Close is a pleasant, four-bedroom house in a cul-de-sac in the middle of the village of Grewelthorpe.

The kitchen and bathroom were replaced in 2013. It has a single garage and room for other parking, a utility room and a sunny garden.

The previous holder of the house for duty post says: “Grewelthorpe is a delightful village to live in with lots going on. There is a real sense of community, neighbours are friendly. Ready access to walks and woods.”



The house at HG4 3BL

## The ministry team

As well as the churchwardens, PCCs and church members, you would be sharing the joys and responsibilities of ministry with Revd Ian Kitchen, the Priest in Charge, along with our licensed Readers Liz Jarvis and Adrian Roberts, who both work across the benefice.



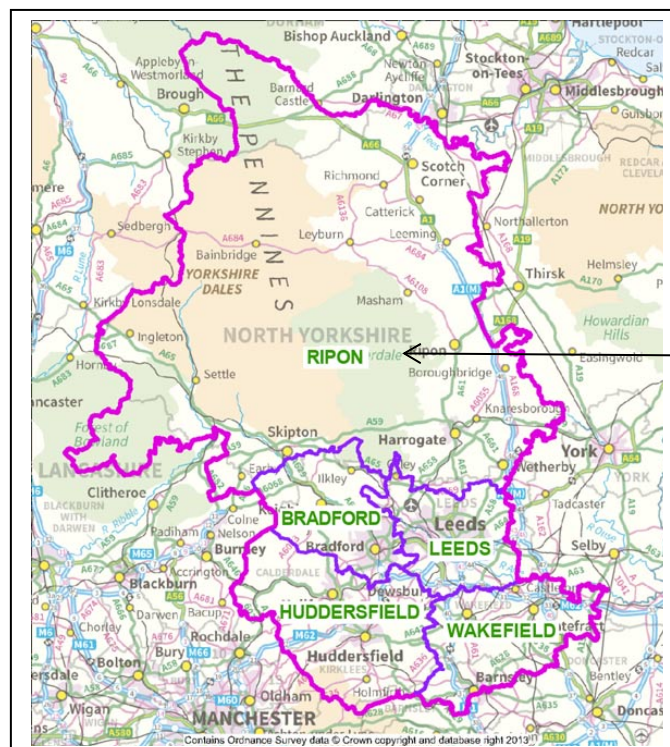
## Our diocese

The Diocese of Leeds comprises five Episcopal Areas, each coterminous with an Archdeaconry. This is now one of the largest dioceses in the country and its creation is unprecedented in the history of the Church of England. It covers an area of around 2,425 square miles, and a population of around 2,642,400 people.

The three former dioceses were created in the nineteenth and early twentieth centuries to cater for massive population changes brought about by industrialisation and, later, mass immigration. The diocese comprises major cities (Bradford, Leeds, Wakefield), large industrial and post-industrial towns (Halifax, Huddersfield, Dewsbury), a spa town (Harrogate), market towns (Skipton, Ripon, Richmond and Wetherby), and deeply rural areas (the Dales). The whole of life is here, along with all the richness, diversity and complexities of a changing world.

The Diocesan Bishop (The Rt Revd Nick Baines) is assisted by five Area Bishops (Bradford, Huddersfield, Kirkstall, Wakefield and Ripon) and five archdeacons (Bradford, Halifax, Leeds, Pontefract, Richmond & Craven). The Bishop of Ripon is the Rt Revd Dr Helen-Ann Hartley.

Our vision as the Diocese is about confident clergy equipping confident Christians to live and tell the good news of Jesus Christ. For all of our appointments we are seeking clergy who have a joyful and confident faith which has inspired a track record of church growth, both numerically and spiritually.



Location of the  
Fountains Benefice  
within Leeds  
Diocese