

April 2025

# HOUSE FOR DUTY MINISTER PENRYN BENEFICE CARNMARTH SOUTH DEANERY

## PROFILE & STATEMENT OF NEEDS

*St Gluvias,  
Mylor with Flushing,  
Mabe with Ponsanooth*



# CONTENTS

3	Introduction
4	Our Bishop
5	Our Rural Dean
6	Why Penryn
7	Our Vicarage
8	Our Ministry Team
9	Our Mission & Ministry Services
10	Discover the Penryn Benefice
12 - 15	Our Parishes Mabe with Ponsanooth Mylor Flushing St Gluvias with Penryn
16	Deanery Links Deanery Missioner Children & Families Worker Other denominations Schools & Colleges
17	Attendance & Financial information
20	Safeguarding
21	Wellbeing
22	For more information

# INTRODUCTION

Join us in building a new chapter of ministry in Penryn Benefice

This is a time of exciting change, where traditional parish ministry meets fresh expressions of church, and where creative approaches to mission are celebrated.

Candidates who do not require use of the house for the better performance of their duties are encouraged to apply for permission to live elsewhere in accordance with the Diocese of Truro Housing Policy. Subject to approval of their housing, they would instead be offered a 0.35 stipend for ministry on two days plus Sundays, with an expectation that they would not regularly work beyond 14 hours per week.

Penryn is a vibrant and friendly place. Here, Cornish residents live alongside university students and those drawn to Cornwall's unique charm and lifestyle. It's a community where tradition meets innovation, and the possibilities for meaningful ministry abound.

We are seeking a House for Duty Priest who is:

- **Mission-hearted:** Passionate about sharing the Gospel and connecting with people in authentic and creative ways.
- **Collaborative:** A team player who enjoys working alongside our diverse group of lay and ordained ministers.
- **Flexible and creative:** Open to reimagining ministry and exploring fresh ways to engage with our communities.
- **Relational and approachable:** Someone who values building strong, meaningful relationships with individuals and communities.

## WHAT YOU CAN EXPECT

You'll join a friendly and supportive benefice with a clear vision and active engagement in our local communities. Our churches have distinctive traditions, each with their own character, yet they are united in a collective heart

for mission. We have weekly ministry meetings and regular benefice services, celebrating the diversity of our traditions while building something bigger than ourselves.

As our priest, you'll have the opportunity to support, encourage, and inspire emerging lay leaders from within our congregations. You'll help us reimagine ministry in a changing world, finding creative ways to share God's love and serve our communities.

**REVD EMMA DUROSE**  
**OVERSIGHT PRIEST FOR THE PENRYN BENEFICE**



# OUR BISHOP

In the Diocese of Truro we are deeply committed to following what we call The Saints' Way. We see ourselves as part of a story of the grace of God, made manifest in Cornwall, which stretches back many hundreds of years, possibly to the very earliest days of the Christian faith. It's a story that calls us on into the future too, in loving mission, ministry and service.

As we follow The Saints' Way we will be deeply committed to Christ and to all that he calls us to be and to do; and to Cornwall, this very special place with its own particular culture, history and identity.

We can only follow that way faithfully if we see it as our corporate calling, as the body of Christ, mutually accountable to one another. So we encourage ministers of the gospel to come and join us here who are committed to setting the whole people of God free in their God-given calling, to make Christ known here in Cornwall, today.

So we seek clergy who are faithful in prayer and worship, and who are missional in imagination and heart; those with a pastoral passion for people and communities and their flourishing. We are looking for joyful and hopeful disciples and ambassadors of Christ: people who share the Gospel with energy and commitment, in word and in deed - and above all with love - and who enable the communities they lead to do the same.

We are looking, therefore, for people who, on this journey, are curious and realistic, creative and determined and are deeply hopeful of a better future. But we also want to work with those who recognise that they are not perfect and will sometimes fail, who learn from their mistakes and will take the initiative in seeking reconciliation with others.

We are convinced that all ministers need the support and companionship of others and we help priests in a number of ways so that they never work alone. In this spirit, we encourage those who can forge good relations with others, and actively collaborate with them for the sake of the Kingdom, to join us here in the Diocese of Truro.

I pray that as you consider this opportunity you might discern God's calling and purpose for you in this next chapter of your own discipleship, mission, ministry and service.



**THE RT REVD HUGH NELSON**  
**BISHOP OF ST GERMAN'S**



# OUR RURAL DEAN

The vision for the deanery is one of unity in Spirit and purpose to: preach the gospel and reach the missing generations in the two towns of Falmouth and Penryn, as well as the villages that surround them.

In Christ, we recognise that our communities and churches are, unsurprisingly, very different. Together, we seek a way to be church which reflects our differences and draws upon each other's strengths.

Following Pastoral reorganisation, the Deanery of South Cammarn now consists of two benefices: Falmouth and Penryn.

Our deanery plan allows for ministry in each benefice to include: A combination of Stipendiary (fte), Self-Supporting and PTO priestly ministry; plus, established Pastoral ministry and local worship leading teams. We also have one Reader within the deanery. The Stipendiary priest also carries the responsibility of oversight for the benefice.

The Falmouth Benefice includes the parishes of Budock, Mawnan, King Charles the Martyr, All Saints Church and New Street.

The Penryn Benefice includes the parishes of St Gluvias (Penryn), Mabe with Ponsanooth (one parish with one PCC), Mylor and Flushing.

A third benefice, Penwerris, situated in Falmouth, co-exists within the deanery, reflecting a desire to maintain its identity as a 'Society Church'. Missional work is already under way there under the banner of Christians against Poverty.

## A DEANERY-WIDE MISSION AND MINISTRY PLAN

There is already a Mission centre in Falmouth known as 'Fairwinds Café' at King Charles the Martyr Parish Church. It is an ideal place for engaging with the poor and marginalised as well as the student population. A second 'pop up' mission centre base is also envisaged for Penryn. Both centres are deanery initiatives, with LICF funding. The Missioner, working alongside the Oversight Priest, will look to help establish priorities for such mission in the Penryn Benefice.

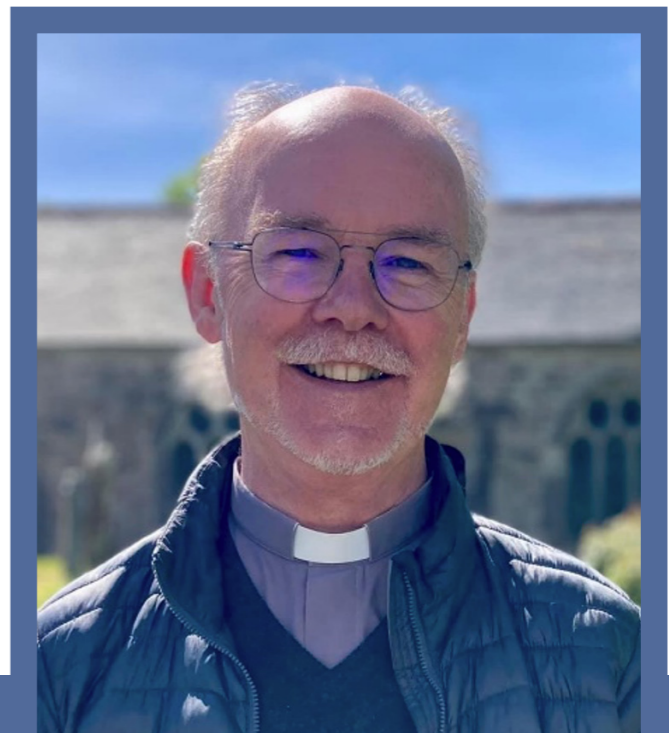
In addition, the Christians against Poverty (CAP) debt centre is now well established and, very much, a deanery initiative. The work continues to grow, with added requirement for more befrienders from the deanery, to accompany the

CAP manager on home visits. Training is provided and all safeguarding procedures are strictly adhered to. It is encouraging to note those who engage with CAP find it so rewarding. It is an enormous privilege to see the way in which people are helped to be set free from emotional as well as financial debt. Funding for this ministry is from LICF.

The deanery also finances a schools' worker on a part-time basis. The role includes supporting work that already takes place within our church schools; as well establishing new initiatives such as 'Advent Adventures' and 'Explore Easter'. Finally, our deanery budget also allows for admin assistance for each benefice.

[READ OUR DEANERY PLAN HERE](#)

**THE REVD GEOFF BENNETT**  
**RURAL DEAN, CARMARTH SOUTH**



# WHY PENRYN

Penryn offers a blend of natural beauty, vibrant community life, and spiritual opportunity. For someone who loves nature, thrives on creativity, and seeks a deep spiritual connection with God, this is the perfect setting.

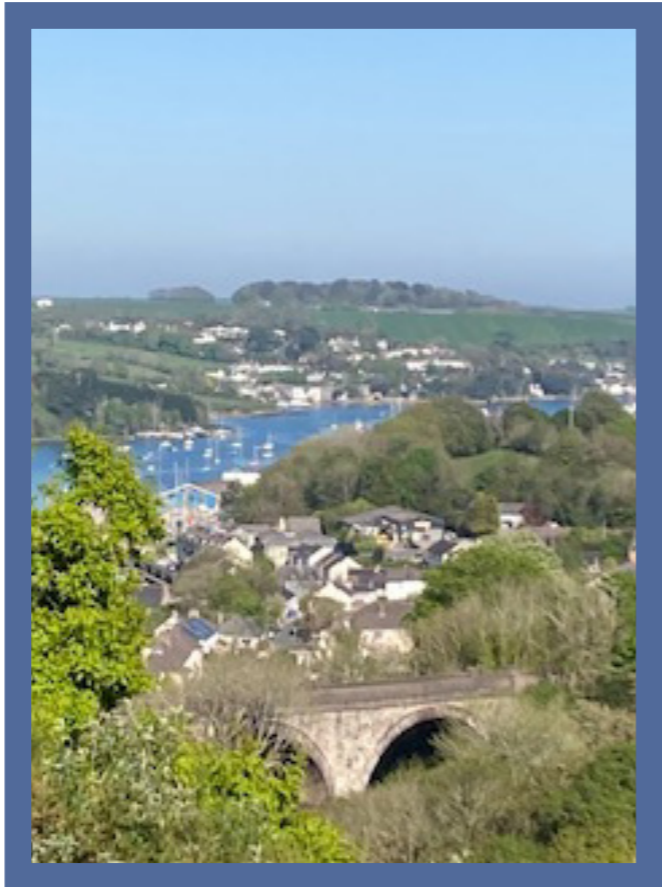
We are looking for someone who feels comfortable leading worship across a diverse and inclusive range of church traditions, ages, and backgrounds. Our services range across BCP, Anglo Catholic, mainstream evangelical, Celtic Christianity, and even Taize. As well as engaging with worship across a breadth of traditional

styles we are looking for someone who would enjoy supporting mission initiatives to engage with our wider communities. In return, you'll find a community that is ready to welcome you, celebrate the unique gifts you bring, and support you as you grow and flourish in ministry.

## OUR VISION

We aspire to be a church centred on worshipping and following Jesus, growing together in faith, deepening our discipleship, and actively serving the people in our communities. Where we:

- **Nurture Faith and Discipleship:** Commit to teaching and making disciples while deepening our own faith and understanding of God.
- **Engage with Our Communities:** Actively connect with and support our local communities, addressing their needs and challenging injustices in society.
- **Support Families and Young People:** Prioritize outreach and ministry that serves families and nurtures the faith of children and young people.
- **Foster Creative and Inclusive Worship:** Encourage worship that is welcoming, diverse, and inspiring, alongside meaningful opportunities for prayer and reflection.
- **Create a Place of Belonging:** Be a church where all people and all generations feel valued, loved, and included.
- **Provide Sacred Spaces:** Ensure our churches and facilities are holy, welcoming, and accessible places that invite people into God's presence.



# OUR VICARAGE

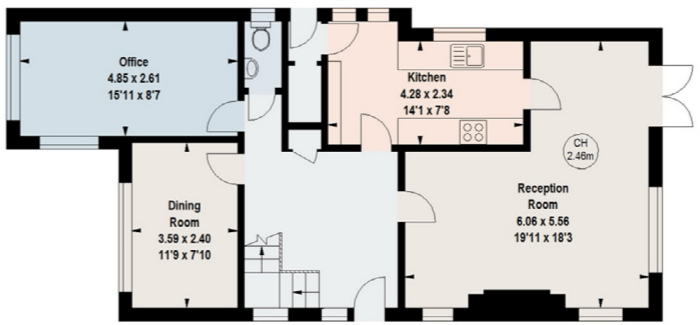
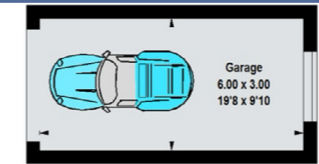
## LOCATION

Mabe Burnthouse, TR10 9HN

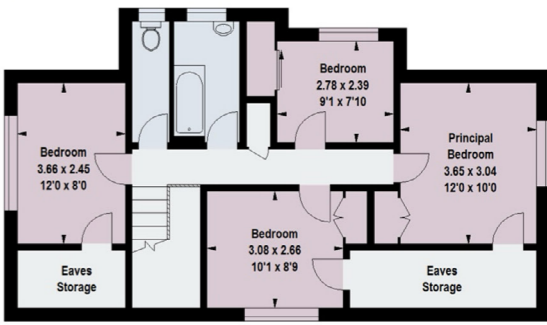
The vicarage has recently been refurbished to a high standard, creating a modern and comfortable living space filled with natural light. The interior features four generously sized bedrooms, spacious and semi-open-plan ground-floor living areas, a well-positioned study/office, and a separate dining room—ideal for work, relaxation, and entertaining.

Set within a good-sized yet easily maintained garden, the vicarage combines a sense of space with manageable upkeep. With gas-fired central heating, an EPC rating of D, and a location in the heart of the community, this is a fantastic opportunity to live in a delightful setting while enjoying a home designed for comfort and practicality.

With south facing views and a patio from which the sea is visible across the fields, the vicarage is perfectly placed for easy access to surrounding areas. Primary and secondary schools, the university, a small retail park with a large supermarket, are all within easy walking distance. Mabe is a warm and welcoming village where community life thrives. From the well-stocked local store to the friendly pub at the heart of the village, there's always a place to connect. The bustling village hall brings people together for regular events, including the much-loved weekly luncheon club—a true hub of friendship and activity.



Ground Floor



First Floor



Key:  
CH - Ceiling Height

# OUR MINISTRY TEAM

You will be part of the following team enjoying regular support, prayer and fellowship.



# OUR MISSION AND MINISTRY

- The following services and facilities are offered across the deanery:
- New Street Church based at All Saints Church in Falmouth continues to lead mission and outreach to the "missing generations".
  - Christians against Poverty (CAP) debt centre. Carnmouth South employ a full time CAP worker leading a team of volunteers.
  - Part-time Children, Families and Schools' lead working with schools and supporting local families.
  - Chillioi, set up by our Deanery Missioner, is a thriving, fully inclusive fellowship for people of various ages, genders, sexualities, races, and denominations.
  - Connections with the Falmouth and Exeter University Campus through our Deanery Missioner and lay lead volunteers.

PARISH	1ST SUNDAY	2ND SUNDAY	3RD SUNDAY	4TH SUNDAY	5TH SUNDAY	MIDWEEK
FLUSHING	10am Holy Communion or Sunday Worship				Joint service across the benefice	School Collective Worship
MABE & PONSANOOTH	10am Holy Communion or Morning Prayer					Luncheon club monthly
ST GLUVIAS	10am Eucharist					Tuesday AM Eucharist Service
MYLOR	10.30am Holy Communion Service	10.30am Local Worship Leader morning worship	8am BCP Holy Communion, 10.30am Holy Communion service	10.30am Local Worship Leader Morning Worship		
ALL SAINTS MYLOR						10am Eucharist or lay-led morning prayer
ZOOM	4pm service					

# DISCOVER THE PENRYN BENEFICE

Nestled along the stunning Fal Estuary, the Penryn Benefice is one of Cornwall's most beautiful, and diverse places to live and minister. With five churches spanning the parishes of Penryn, Mylor, Flushing, Mabe, and Ponsanooth, this thriving community is home to nearly 19,000 residents – plus the vibrant Falmouth and Exeter University campuses, which bring an additional 6,000 students brimming with creativity and energy.

## A COMMUNITY BUZZING WITH LIFE AND POSSIBILITY

Falmouth and Penryn are shaped by a unique blend of history and innovation. The area's maritime legacy, sandy beaches, and flourishing artistic scene make it one of the most popular destinations in Cornwall for young people, retirees, and holidaymakers alike. Local investment has sparked a revival of prosperity, with bustling pubs, cafés, and markets showcasing creative businesses. This energy extends to the life of the church, where communities are excited to explore new ways of connecting faith with everyday life.

## DIVERSE MINISTRY, UNIQUE OPPORTUNITIES

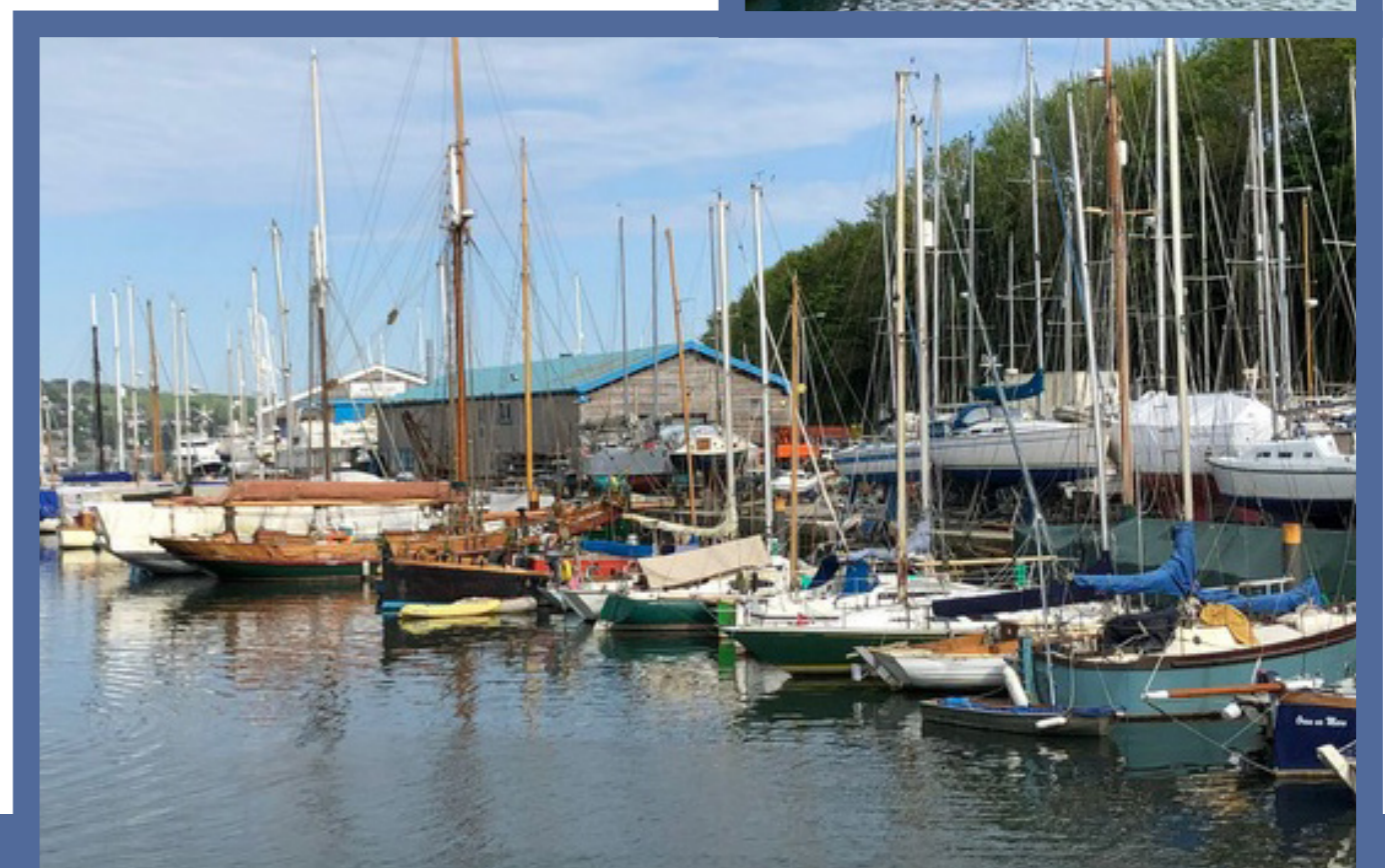
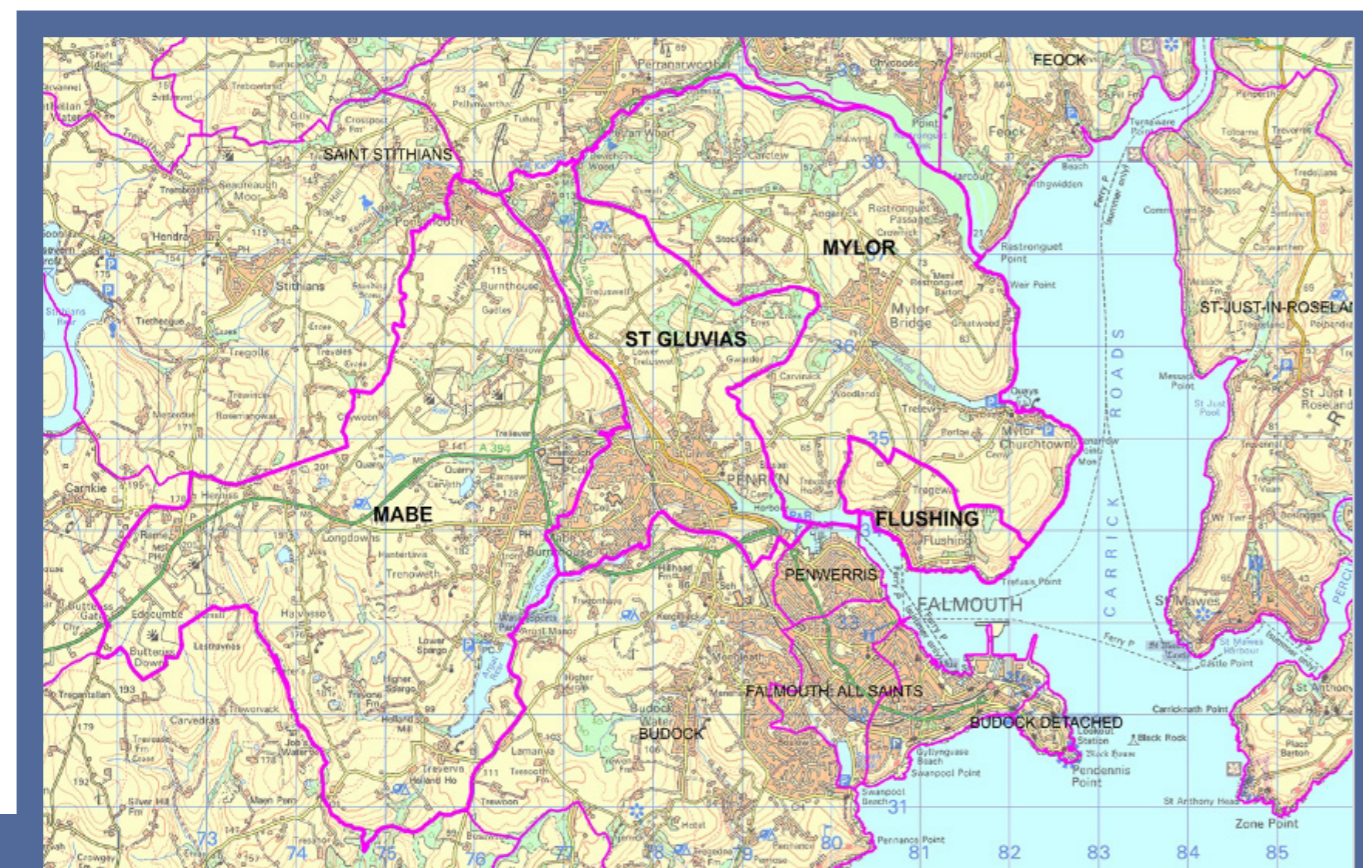
Each parish has its own character and charm, from the peaceful waterside communities of Mylor and Flushing to the growing, family-oriented parishes of Mabe and Ponsanooth. Penryn itself is steeped in history, blending a rich heritage with a forward-looking energy brought by its university population. The churches are at the heart of community life, hosting everything from traditional festivals to contemporary events like sunrise services by the sea and wassailing services at the St Gluvias' Loveland Project.

The benefice is deeply committed to social outreach. With 30% of children in Cornwall living in poverty, there are real challenges – and real opportunities – to make a difference. From CAP workers and family-focused initiatives to an LGBTQ+ church community and ecumenical partnerships, the benefice is active in addressing local needs. Highlights include seasonal services, community outreach, and workshops engaging hundreds of schoolchildren in seasonal celebrations of faith.

## YOUR OPPORTUNITY TO INSPIRE AND LEAD

This is a place bursting with potential for someone who shares a passion for mission and community transformation. You'll have the opportunity to build on existing projects while bringing your own vision and fresh ideas to engage with the diversity of the area. Whether it's connecting with students, supporting families, or working with creative communities, the Penryn Benefice is ready to welcome and celebrate the unique gifts you bring.

Come and be part of this ministry, where you can make a meaningful impact, grow in your calling, and experience life in one of Cornwall's most extraordinary places.



# CELEBRATING THE UNIQUE CHARACTER OF OUR PARISHES

## MABE AND PONSANOOTH

Mabe and Ponsanooth are flourishing communities that combine traditional Cornish charm with a renewed energy brought by the nearby Falmouth and Exeter University campuses.

In Mabe, the churches of St Laudus and St Michael's, nestled amidst stunning natural beauty, take turns hosting weekly services. Both churches have become hubs of community life, hosting events like music evenings, poetry readings, and film nights that welcome non-churchgoers into their spaces. The recently launched midweek missional service at the community centre is steadily growing, offering a fresh way to engage with local residents.

The parish of Ponsanooth, with its proximity to the Kennall Valley Nature Reserve, also offers a strong sense of community, rooted in its connections with local groups, schools, and families.

With a shared congregation and a passion for outreach, Mabe and Ponsanooth are parishes filled with potential, eager to build deeper relationships between the church and the wider community.



## MYLOR

Mylor Parish, a picturesque waterside community, is a place where faith and life intertwine with the beauty of its natural surroundings. St Mylor Church, located at Mylor Harbour, is a beloved destination for visitors and a popular venue for weddings, drawing people to its serene setting.

All Saints Church in Mylor village complements this with a warm, welcoming atmosphere, serving as a hub for regular gatherings and events.

The parish thrives on community involvement. The Community Garden, which surrounds All Saints, is a collaborative effort involving local schools, the Brownies, and other groups. Weekly activities like the Mylor Makers craft group, a Saturday coffee morning, bring people together to share life and faith.

**For more information please visit**  
<https://stmylor.org.uk/>



# OUR PARISHES

## FLUSHING

Flushing, a historic waterside village with a seafaring past, is a close-knit community that combines timeless character with a welcoming spirit. St Peter's Church, at the heart of the village, serves as a spiritual and social anchor, bringing together Anglicans, Methodists, and Roman Catholics under one roof.

The church's strong connection with the local Church of England Primary School is a vital part of its mission, hosting seasonal services and providing a space for communal events. St Peter's is also deeply embedded in the life of the village, hosting a summer fete and welcoming both residents and seasonal visitors to its vibrant community.

We have an online presence via A Church Near You and Facebook.



# OUR PARISHES

## ST GLUVIAS WITH PENRYN

Penryn, one of Cornwall's oldest towns, is steeped in history and brimming with life. St Gluvias Church, with its roots dating back to the sixth century, remains a vital part of the town, offering both spiritual sustenance and a connection to its rich heritage.

The church's role in civic life is significant, with strong ties to the town council and the wider community. The community hall is a bustling centre of activity, hosting everything from Little Sparks parent and toddler sessions to art classes and Brownies. Recent upgrades, including solar panels and state-of-the-art technology, ensure it remains a forward-thinking resource for all.

With a flourishing community garden and connections to initiatives like Loveland, which supports local families in need, St Gluvias embodies a mission-focused approach to faith. The congregation's Anglo-Catholic tradition adds depth to its worship, while its inclusivity and outreach



reflect a commitment to serving the town with love and care.

**For more information about our Church and Hall please visit**  
Church and Parish: [stgluvias.org.uk](http://stgluvias.org.uk)  
Community Hall: [stgluviashallpenryn.org.uk](http://stgluviashallpenryn.org.uk)



# DEANERY LINKS

## DEANERY MISSIONER

Our Deanery Missioner is funded by the Low Income Community Fund, LICF, and engages with our communities in many exciting and innovative ways. He works closely with local charities such as Georgia's voice, Ukrainian Refugees, Poetry Slam on Poverty and Justice, Acorn Housing Trust, Mission to Seafarers and the Sparrows Project which works with the police to help those escaping modern day slavery.

Centred in Fairwinds which is on the main street in Falmouth, Ben holds drop-ins, groups, meetings and is building up missional fellowships, especially: Chiloi, is an open community, missionally focused towards the LGBTQ community, The Sanctuary, for vulnerable families and those that have suffered domestic abuse. Fairwinds Youth, and Beacon of Hope. Ben also works 3-4 hours a week as a chaplain at the university.

## CHILDREN & FAMILIES WORKER

Tina works closely with all ten local primary schools across the deanery, five of which are in Penryn Benefice, one is a Church of England school. Tina leads various workshops through the school year inviting all the schools to engage with Advent Adventure for Key Stage 1 children, and Easter Explorers for Key Stage 2 children. All the schools are invited to visit their local churches as part of the National Curriculum places of worship syllabus, and Tina holds Moving On workshops for Year 6 children. Penryn Benefice hold an Annual Summer Holiday Children's Club in three parishes through the Summer Holidays and Tina will be supporting Revd Emma to lead that.

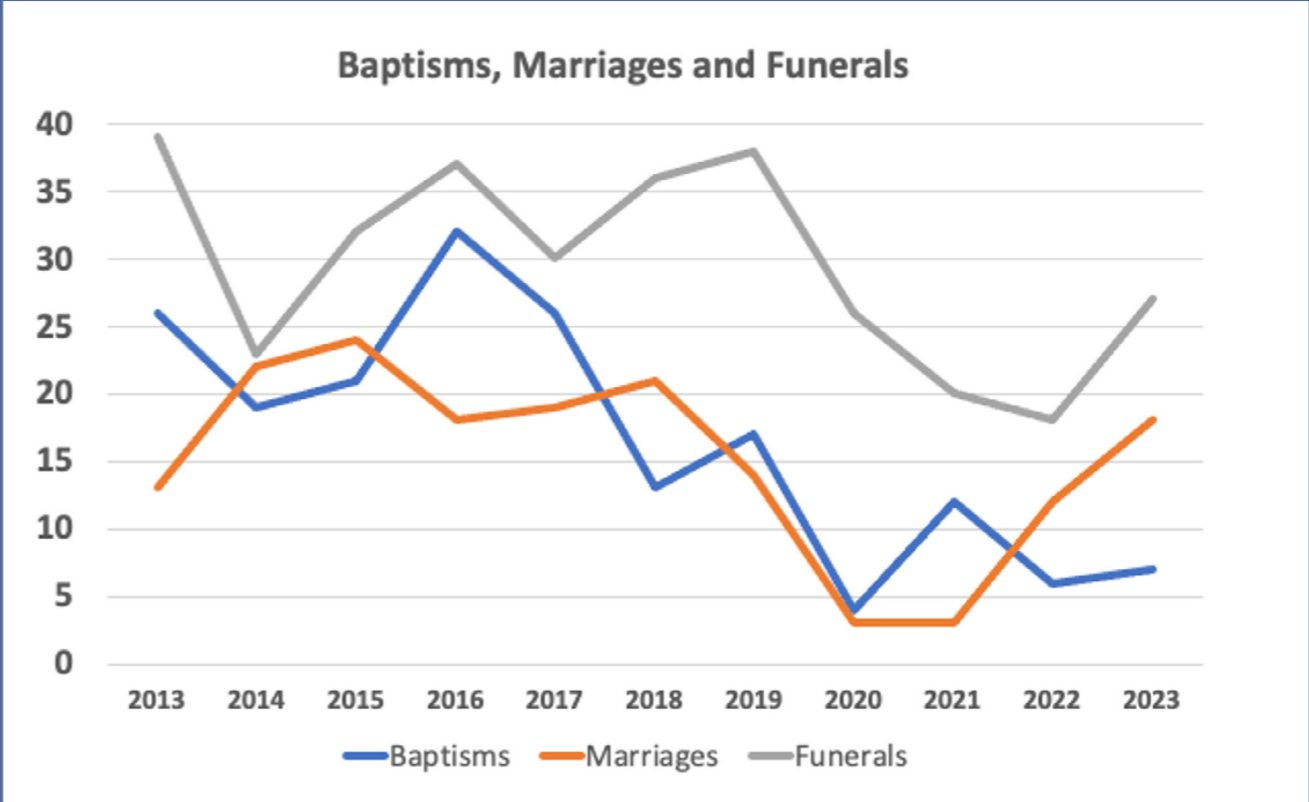
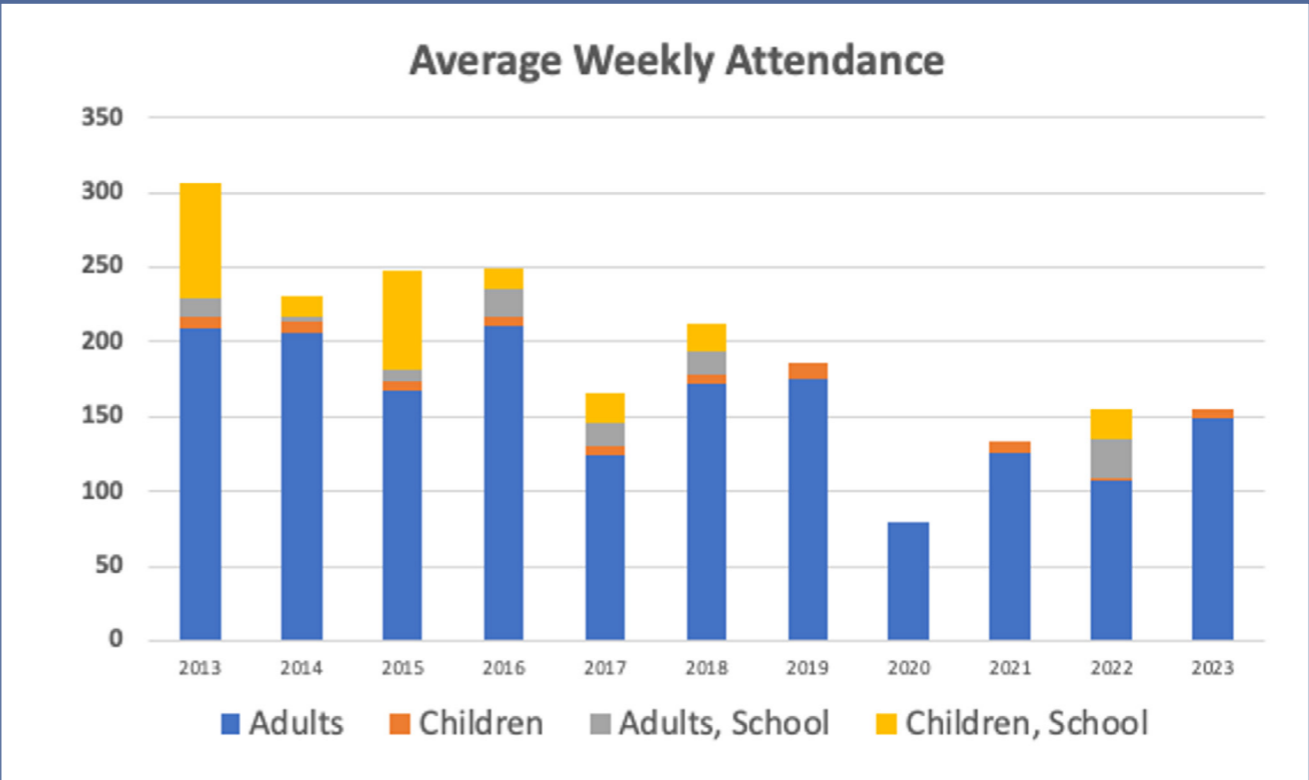
## OTHER DENOMINATIONS

- Light and life
- Harbour (Elim) Church catering for the needs of predominantly of the university students.
- Mylor churches work closely with the Mylor Methodist Church. The Methodist Church in Flushing has now combined with St Peters and former leaders and musicians of the Methodist Church take an active part in leading services and worship. The Methodist Church in Ponsanooth has been instrumental in introducing our schools and family worker to the local school.
- Falmouth Vineyard Church meets in the Old Carpenter shop, Islington Wharf. They enjoy a multi-generational fellowship of worshippers. In the evenings, the facility is used by Stirring the Waters - a well established Christian Fellowship.
- Highway is a lively evangelical free church which has a heart for serving the poor and marginalised. A busy food bank, on the premises, serves both Falmouth and Penryn.

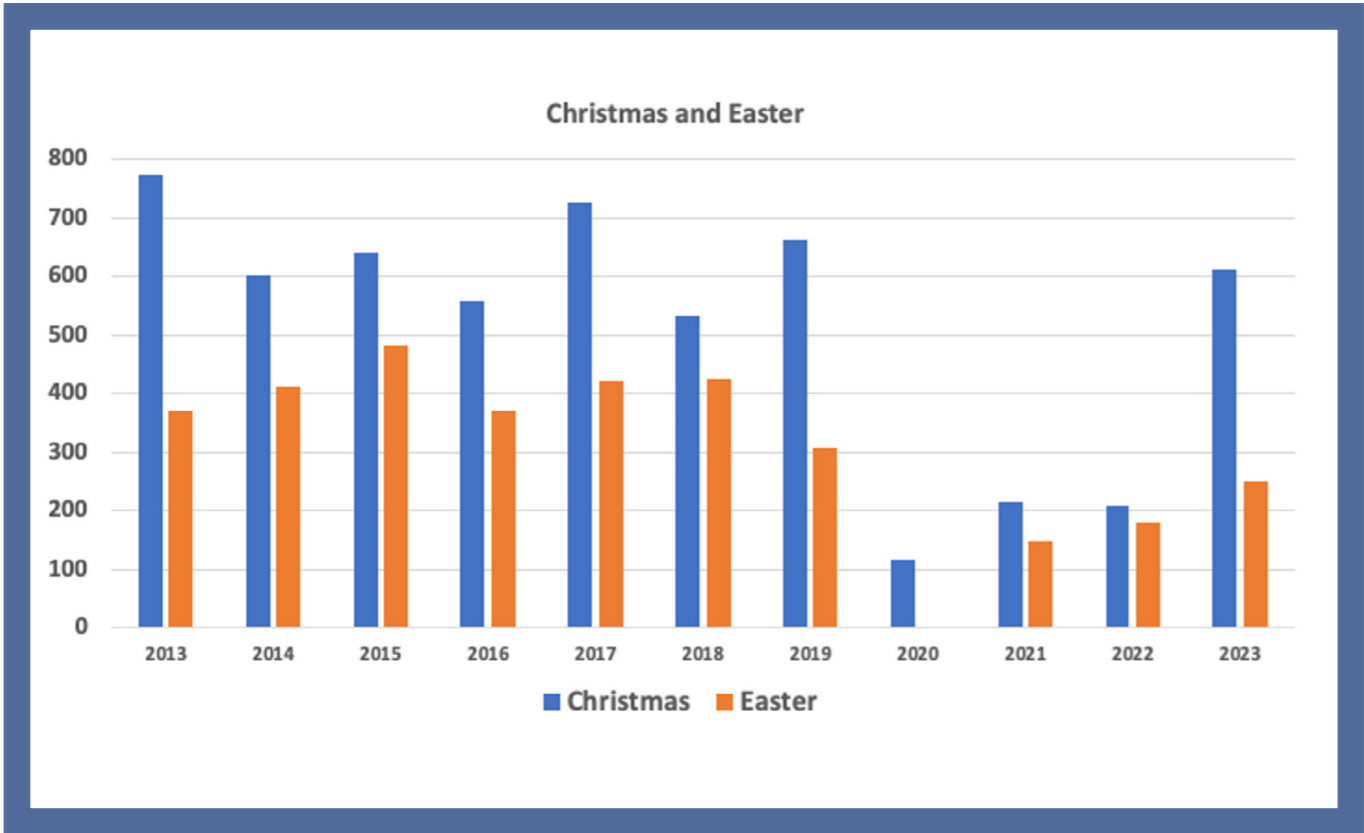
## SCHOOLS & COLLEGES

- The Penryn Campus of the Universities of Exeter and Falmouth lies within the Penryn Benefice and represents an opportunity for greater outreach across the benefice and deanery.
- Flushing C of E Primary and Pre School: 78 pupils
- Mylor Village School: 140 pupils
- Mylor Pre School
- Penryn College - 1,200 students
- Penryn Primary and Nursery - 380 students
- Mabe Primary and Nursery - 175 students
- Ponsanooth - Pre-school & Kennall Vale Primary - 157 students.

# ATTENDANCE INFORMATION



# ATTENDANCE INFORMATION



# FINANCIAL INFORMATION



# SAFEGUARDING STATEMENT

This parish recognises that the care and protection of children, young people and vulnerable adults involved in church activities is the responsibility of the whole Church.

Everyone who participates in the life of the Church has a role to play in promoting a Safer Church for all.

Our approach ensures that we promote [The Church of England Safeguarding Policy](#) statement based on five foundations and offers six overarching policy commitments:

- Promoting a safer environment and culture,

- Safely recruiting and supporting all those with any responsibility related to children, young people and vulnerable adults within the Church,
- Responding promptly to every safeguarding concern or allegation,
- Caring pastorally for victims/survivors of abuse and other affected persons,
- Caring pastorally for those who are the subject of concerns or allegations of abuse and other affected persons,
- Responding to those that may pose a present risk to others.

Our policies, procedures, and approach meet those requirements and guidance as issued by the Diocesan Safeguarding Team.



# CLERGY WELLBEING

This diocese recognises that most clergy roles are demanding. Providing support and caring for your wellbeing is important to us.

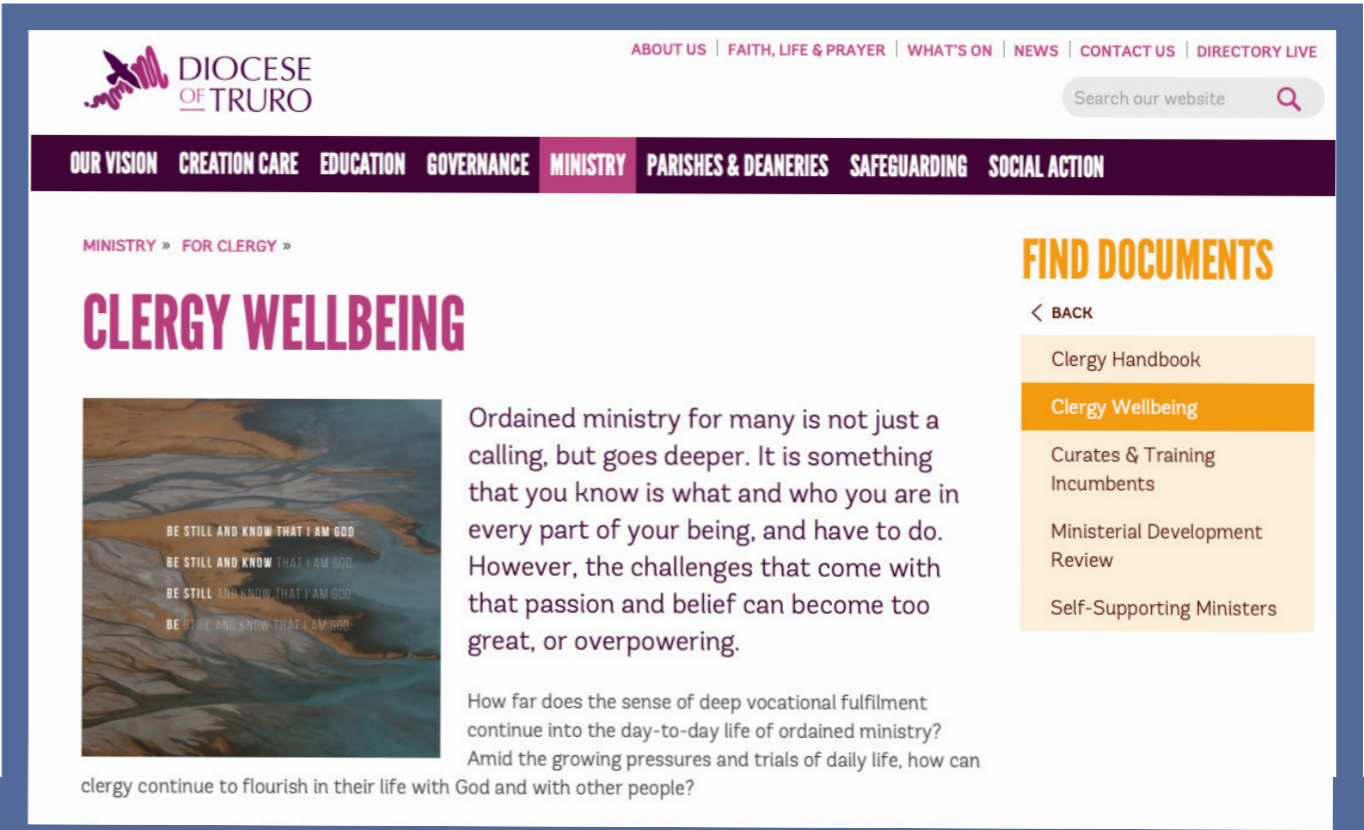
There is a commitment at senior level and the organisation generally to:

- ensure that, at a strategic level, clergy wellbeing is explicitly referenced, and embedded in, all projects and work;
- it is adequately resourced and funded; and
- that we champion clergy wellbeing, challenge unsupportive behaviours and attitudes, and lead by example.

The diocese has a Clergy Wellbeing Group, with the aim of embedding the principles of the Covenant for Clergy Care and Wellbeing into the day-to-day policies and practices of the diocese. The group has agreed an action plan based on the themes and actions recommended in the booklet “How Clergy Thrive” by Liz Graveling and the useful resources guides that accompany it.

The diocese offers:

- occupational health and other confidential support services.
- a new pastoral supervision scheme.
- a page on the diocesan website dedicated to clergy wellbeing with resources and information.
- regular wellbeing articles, tips, and information in our clergy newsletter - Ministry Matters.
- workshops for PCCs to discuss clergy wellbeing boundaries/expectations, and a plan to run more.
- encouragement to clergy to report sick absence, offering to support them more effectively when they are ill including more frequent OH referrals.
- a revised MDR process to include (among other things) questions encouraging clergy to reflect on their physical, emotional and spiritual wellbeing.





## MORE INFORMATION

If you would like to find out more about this post, please email:  
[archdeacons@truro.anglican.org](mailto:archdeacons@truro.anglican.org)

## GET IN CONTACT

**T** 01872 274351

**E** [info@truro.anglican.org](mailto:info@truro.anglican.org)

**www.trurodiocese.org.uk**

The Old Cathedral School,  
Cathedral Close, Truro,  
TR12FQ

