

Oakham Team Ministry Profile

The Oakham Team Ministry -
a benefice of 10 parishes
in north-west Rutland

centred on the county town of Oakham



Oakham Team Ministry Profile

Contents

- ❖ [Who are we?](#)
- ❖ [Who are we looking for?](#)
- ❖ [Our Vision and Mission](#)
- ❖ [Our Biggest Challenges & Opportunities](#)
- ❖ [Role Description](#)
- ❖ [Personal qualities](#)
- ❖ [Our Structure](#)
- ❖ [Our Parishes](#)
- ❖ [All Saints Oakham](#)
- ❖ [St Peter and St Paul Langham and Barleythorpe](#)
- ❖ [The northern and the southern parishes](#)
- ❖ [Our Diocese and Deanery](#)
- ❖ [The County of Rutland](#)
- ❖ [Oakham](#)
- ❖ [Schools](#)
- ❖ [Medical Services and Care](#)
- ❖ [Your new home](#)
- ❖ [A message from the Archdeacon](#)
- ❖ [Contact Information](#)
- ❖ [Appendix 1 – the northern parishes](#)
- ❖ [Appendix 2 – the southern parishes](#)

Who are we?

- a benefice combining a busy town centre church with nine smaller and predominantly rural parishes to the north and south
- teaching God's love and purposes for His world and His people
- welcoming all, members and many visitors, into our historic and beautiful churches
- serving as focal points for our communities, offering pastoral, spiritual and social resources

with a leadership team, shared across our benefice, including a Team Rector, two Team Vicars, a Curate, seven Readers, an intern and a small number of retired clergy; together with an administration team based at All Saints, Oakham

Who are we looking for?

We seek an experienced incumbent with a blend of spiritual wisdom, compassionate pastoral care and organisational confidence to play a pivotal and dual role as

- Team Rector for ten parishes, eight of which are led by our two Team Vicars (each with 4 parishes)
- ‘Vicar’ of the parishes of All Saints Oakham and St Peter & St Paul Langham & Barleythorpe

This is an exceptional opportunity to lead a well-established town centre church with a strong civic presence, as well as the parish of Langham & Barleythorpe, adjacent to the Oakham Parish. Both parishes have had considerable residential development in recent years.

In parallel, you will support our two Team Vicars in their rural parishes so that collectively and collaboratively the combined benefice of ten churches is best able to serve the spiritual and community needs of this area and meet the many opportunities and challenges that are present in this blended rural and town setting.

In this combined role you will also manage a small administrative team based at Oakham Church who support the clergy, lay leaders and fellowships throughout the benefice.



All Saints Oakham

Our Vision & Mission



St Peter and St Paul, Langham

Each parish across the benefice is distinctive, but we share a vision :

- Wanting to be Jesus loving and Spirit-led
- Open to the importance of encounter with God in worship and in our daily lives
- Being inclusive communities with an emphasis on growth
- Focused on outreach, engagement and discipleship

Our biggest challenges

- To maintain all that is good about our benefice whilst recognising that change and making space for new mission initiatives is essential
- Our rural parishes have limited scope for population growth and have an ageing demographic
- Our buildings estate comprises many old and listed churches which create pressure on our limited financial resources

Our biggest opportunities

- Our visibility and our connections within each parish and across the county
- Our established administration team, clergy and lay ministers working together for the benefit of all ten parishes in our benefice
- Our committed lay leadership and the wide-ranging skills and experiences within our congregations

Role Description

The Team Rector will:

- Take primary responsibility for the churches in Oakham & Langham, this will impact and shape many of the priorities of the Team Rector
- Give spiritual leadership across the ten parishes
- Grow our individual faith and service through teaching and example
- Develop the growth of our congregations, particularly reaching out to families
- Value and develop a range of worship styles, formal and informal
- Support and extend pastoral care among the congregation and community
- Discern and encourage the skills and calling of others
- Authorise, build and sustain ministry and lay leaders teams
- Lead collectively and manage change collaboratively
- Represent All Saints Church in its regular civic responsibilities for the county of Rutland and the town of Oakham

Externally, the incumbent of All Saints is invited to be an *ex officio* member of the governing body of the local Church of England Primary School and is a trustee for the [St John and St Anne Almshouses](#), an Anglican foundation for those of limited means.

Personal qualities we are looking for include:

- An experienced and self-aware leader able to develop a growing range of traditional and less formal liturgy, ensuring people hear through Scripture, God's word for today.
- A sustained pattern of personal prayer, listening to the Holy Spirit and trusting that the Lord will direct and guide
- Committed to compassionate pastoral care
- Energetic with a mission-led focus
- Team leadership experience and skills to manage a role with dual responsibilities
- Familiarity with working across multiple parishes
- Awareness of issues facing rural communities
- The ability to discern skills in others and delegate effectively in support of our clergy, many volunteers and staff
- Able to balance personal workload and recognise 'overload' in others
- A concern for the wellbeing and safety of others at all times
- An able listener and speaker, representing our church and presenting our faith in a wide range of settings

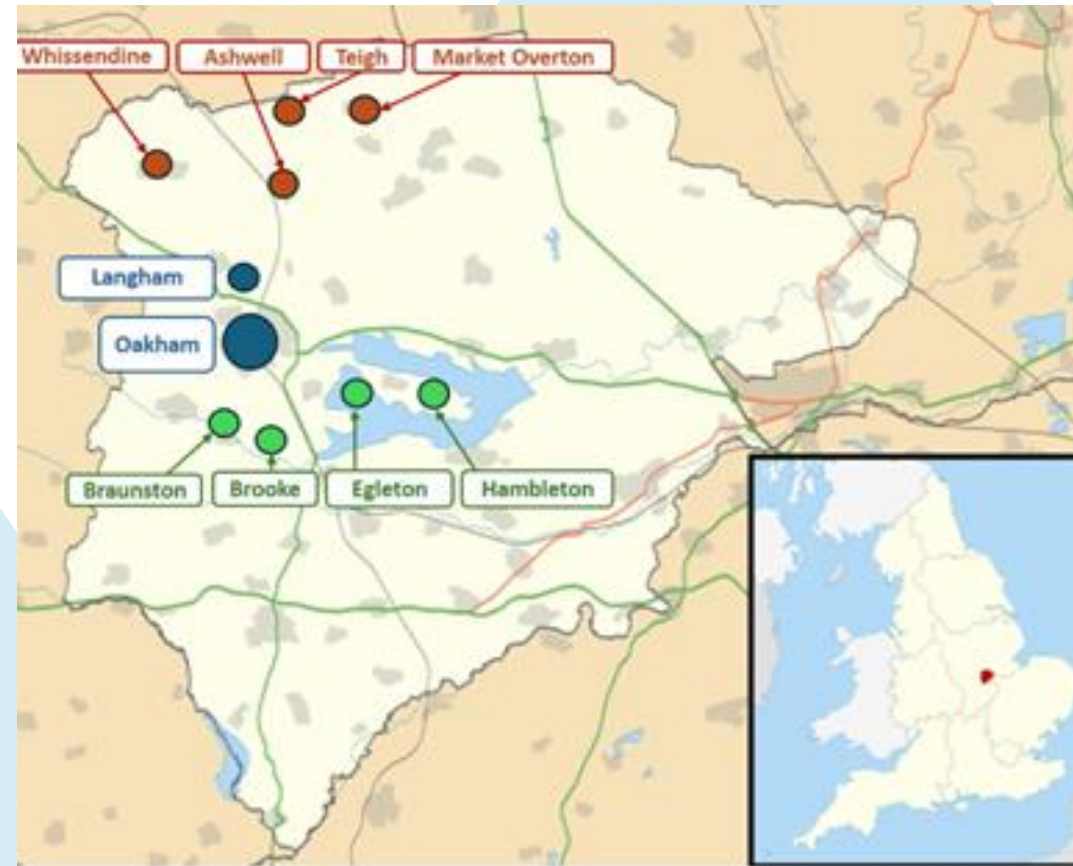
Our Structure

The benefice comprises:

- The town centre church of Oakham and neighbouring parish church of Langham & Barleythorpe – Incumbent: Team Rector
- The Northern Parishes of Whissendine, Ashwell, Market Overton and Teigh – Team Vicar: Reverend Deborah Marsh.
- The Southern Parishes of Braunston, Brooke, Egleton and Hambleton – Team Vicar: Reverend Jenni Duffy.

We have trained curates on a regular basis over recent years and found the regular flow of curates to and from Oakham Team Ministry to be a very positive and enriching experience.

Four members of our congregations were ordained Deacon at Peterborough Cathedral in July 2025.



Our parishes

A brief synopsis of each parish can be found on the following slides with further information available on the team website. the “Church Near You” website or, for news, events and live streams, our Facebook page.

[Oakham Team Ministry – The Church of England in North-West Rutland](#)

[A Church Near You](#)



[Oakham Team Ministry Facebook](#)



All Saints Oakham

All Saints Oakham is the parish church of Oakham situated centrally with a commanding presence in the town centre.

In addition to its place at the heart of the benefice, Oakham Church collaborates positively with other town churches and their ministers through the Churches Together in Oakham partnership.

The church is open all day, every day for staff and visitors, meetings, prayer, concerts and many other activities.

Details of church life are given in the pages that follow. More information can be found on the Oakham and Langham pages of the church web site.

[Oakham Team Ministry – Oakham and Langham](#)



Palm Sunday Procession

Our worship

The congregation places a high emphasis on reading the Bible, prayer and worship, while celebrating the rich traditions of our Christian faith.

We use the lectionary as well as short Bible series or themes to provoke our interest and understanding. It is important that we enable all ages to contribute to church services in appropriate ways.

There is a long history of formal, liturgical worship, celebrating the major festivals and particularly Christmas and Holy Week through full liturgical provision with high quality music and ceremony.

Less formal styles of words and music are increasingly valued and regularly feature in our services.

The PCC has agreed that Prayers of Living in Love and Faith would not be used at All Saints, not because of the principle, but because the prayers themselves did not meet the needs of the parish.



View from the Parish Office

[Latest statistics for mission figures](#)

Sunday services

Sunday	Time	Service
1st	8.00am	Holy Communion (traditional language)
	10.30am	Holy Communion (live streamed on Facebook)
	6.00pm	Choral Evensong
2nd	8.00am	Holy Communion (traditional language)
	10.30am	Holy Communion (live streamed on Facebook)
	6.00pm	2 nd Sunday @ 6
3rd	8.00am	Holy Communion (traditional language)
	10.30am	Holy Communion (live streamed on Facebook)
	6.00pm	Evening Prayer
4th	8.00am	Holy Communion (traditional language)
	10.30am	All Age Worship (live streamed on Facebook)
	6.00pm	Holy Communion with healing prayer
5th	8.00am	Holy Communion (traditional language)
	10.30am	Holy Communion Joint service with Langham
	6.00pm	Churches Together in Oakham Joint Service

Mid week services

Morning prayer is streamed live on Facebook at 8.30am on Monday, Wednesday and Friday

On Tuesday and Thursday, morning prayer is held in church.

Tuesday 9.15am Team Holy Communion

Wednesday 10.00am Holy Communion – in the Chapel of St John and St Anne.

Wednesday 8.00pm Compline on Facebook

Friday 10.00am BCP Holy Communion

Candlemas 2026

[Back to Contents](#)



Our vision

We see All Saints developing as a vibrant, welcoming hub at the heart of Oakham's spiritual and family life, as we share ourselves and our church building as a meeting place for God's blessings to all. In consultation with the church congregation through ["Faith in the Future"](#), All Saints is developing a well-defined vision in support of its current congregation and its mission and outreach to encourage all to come into a living relationship with Christ.



Deliberations!

[Back to Contents](#)

Outreach and Pastoral Care

Outreach and pastoral care for our congregation and the wider community, are fundamental elements of witness at All Saints Oakham and are dependent on delivery by both clergy and laity.

The Team Rector will oversee existing pastoral teams, which visit schools and care homes, the bereaved, housebound and unwell; as well as planning their own pastoral visiting.

We want to expand our outreach teams that go into schools, as well as continuing to support services of faith, love and comfort in our local residential homes and in [the chapel of St Anne and St John](#).

In September 2025, we launched our [CAMEO initiative \(Come and Meet Each Other\)](#) where we encourage older members of our churches, our friends and neighbours to come together for fellowship and a simple hot lunch twice a month.



[Back to Contents](#)



Our groups and activities

We have teams of dedicated volunteers including readers, cleaners, sidesmen and women, committee chairs and members, flower arrangers, gardeners, the PCC, coffee and tea makers, group and activity leaders, servers, welcomers, bell ringers, repairers and more. New information on our various groups can be found at

[Groups for all](#)

Children and Young People

A long-established Tiny Tots Group for toddlers and their carers meets every Thursday morning in the church. There is a small Sunday School that meets in Church during Sunday morning services. There are large attendances of parents and children at “special” services, particularly the Crib and the Christingle Services over the Christmas period. More detail can be found at

[Children and Young people](#)



Music

Music is an important strand of our church identity and with our able Director of Music, the standard of music for worship is growing. Our robed choir leads us in hymns, anthems and sung responses in our traditional Holy Communion services, and in our monthly Choral Evensong our Benefice choir, augments All Saints choir for special occasions.

We support and enjoy local music making. The Director of Music guides the Concert Committee in co ordinating [regular concert programmes of organ recitals, instrumental and choral works](#) that attract many visitors to the church. We consider music at All Saints to be a centrepiece of the church's mission in the community and see the need to develop the church interior with this in mind.

We are the venue for weekly lunchtime concerts in term time, performed by [music students from Oakham School](#) and for annual local schools Carol Concerts, Harvest celebrations and School Leavers services. We host the [Rutland Youth Choir](#) for their weekly after-school practices seeing an opportunity to link some children with the church choir. We are a popular venue for fund raising concerts for national and local charities. Visiting choirs, local instrumental groups, orchestras and bell ringing teams are welcomed.

The church has a [concert standard Tickell organ](#) . The Yamaha C7 grand piano is owned by Oakham School and shared with them. The building has a good acoustic.



Oakham Choir

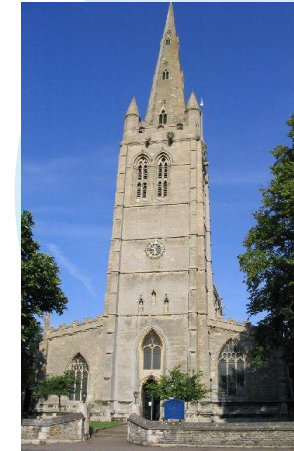


Concerts and recitals

Buildings

All Saints Church, a Grade 1 listed building, dates from the [twelfth century seating some 250 people in Victorian pews](#). It has been adapted to include a meeting room, kitchen area, office space and toilet. In recent years glazing and leadwork has been repaired or replaced and we have installed a new sound system and [high-level LED lighting](#).

Our [Parish Hall](#) is situated across the road from the church and seats up to 80; it has a small, equipped kitchen. A Parish Hall committee takes church and external bookings, enabling the hall to be self-funding and contribute towards church finances.



West End and Tower

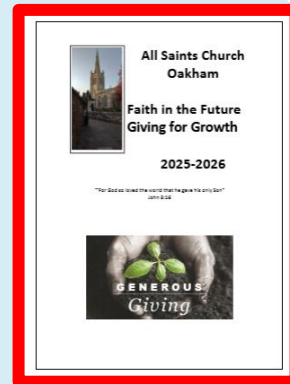


[All Saints from the air](#)



Parish Hall

Giving for Growth booklet



Church Finances

A significant part of our income comes through regular giving and whilst we had an operational deficit in the last 2 years, it was covered by excess giving for major capital expenditure, so our books balanced.

We have always paid our parish share in full.

There are currently 171 on the electoral roll.

St Peter and St Paul, Langham & Barleythorpe

The Village

Langham village, with a population 1,400, is about 2 miles north of Oakham and has a [C of E primary school](#), [a pub](#) and a village hall with lots of clubs, groups and activities. Nearby Barleythorpe, originally a very small village between Langham and Oakham, has expanded through modern housing developments and now has a population of about 3,000.

Church life

Langham church is friendly, welcoming and inclusive. We have a stable congregation with 34 on our electoral roll and between 25 and 30 attending Sunday worship each week. In recent years, though we now have no resident member of the clergy team, we have enjoyed being involved in curate training, finding it to be nourishing and enriching for our church and local community.

We have rotas for welcomers, readers and intercessors, flowers, refreshments after services, and volunteers who open and close the church daily. A small choir sings every Sunday, the choir leader choosing the hymns and planning the organist rota. About once a month our singing is led by a flautist instead of the organ. Our peal of six bells is rung by our local bellringers most Sundays. The tower captain and his team maintain the bells, repairing and refurbishing when required.

We are proud to have received our Silver Eco Church award and continue to work on our green journey. We are also a Fairtrade Church and support the local fairtrade group's activities.



Rutland Ride and Stride



Ready for Harvest Supper

Church services

We hold a service every Sunday at 10.30am, usually alternating between Holy Communion and Morning Prayer. Where there is a fifth Sunday in the month we share a team service with Oakham All Saints, either in Oakham or in Langham.

We celebrate all the major festivals and seasons with special services. Our weekly Bible study group is well attended as we grow our faith and understanding through it. As a PCC we have looked at the Prayers of Love and Faith and do not find them wholly appropriate or respectful enough in their context. We have decided to act on a case by case basis and will continue to reflect on them prayerfully.'



Inside the church

Church Finances

Our current state of finances is fairly stable and our books are balanced. The main source of income is from regular donors within the church fellowship. We do not have any significant reserves although we are currently fundraising for a toilet and have £36,000 in a restricted fund: including £26,000 allocated for the toilet fund and £10,000 for roofing repairs. Our heating boiler has recently been taken out of service and is now unserviceable due to obsolescence.

Our Parish share is around £16,000 which was paid in full last year.

The condition of the church fabric is fair.

[Latest statistics for mission figures](#)

Church and Community Engagement

Our toddler group meets weekly in the church during term time. It is a very jolly, relaxed and supportive group providing activities led by the parents/carers.

We organise occasional concerts in the church and quizzes, history talks etc. in the village hall. Although these are primarily fundraisers, they are also great community events and attract folk from outside the immediate village.

Each August we invite the community to help with scything and strimming an area of our churchyard which is managed as a meadow.

We support the [Rutland Food Bank](#) with a collection box in our porch, and with additional engagement at Harvest, Christmas and Easter to support families by giving festive foods.

As a church fellowship we support a Christian School charity in Africa, in which a past curate is actively involved.



The Churchyard Meadow

The Northern & Southern Parishes

Introduction by the Team Vicars

Rev. Deborah Marsh



Rev. Jenni Duffy

As Team Vicars with incumbent status, each of us has responsibility for four parishes within the wider team. We are committed to working collaboratively and greatly value the contribution of our lay ministers, retired clergy and administrative team, alongside our Churchwardens and PCCs. This is reflected in the way we organise our rotas, and in our ongoing conversations about how best to use the many gifts and skills across the team. We are committed to supporting those exploring God's call and seek to enable them on their discernment journey. Fellowship and mutual support are central to our shared life, and we value worshipping together each Tuesday at our Team Communion, followed by coffee/tea and time to catch up. We seek a Team Rector who will respect individual responsibilities while enabling and supporting the whole team to flourish, both individually and collectively, and who is keen to strengthen team ministry through collaboration on special services and the occasional pulpit swap across the parishes.

More detail on the Northern & Southern parishes can be found in [Appendix 1](#) & [Appendix 2](#) and at

[Oakham Team Ministry – the Northern Parishes](#) and [Oakham Team Ministry – Southern Parishes](#)

Our Diocese and Deanery

Peterborough Diocese was established in 1541 with its roots firmly formed by monastic life and missionary impetus. Today, we are rediscovering God’s mission for us as we seek to implement a strategy that will allow us to focus afresh on where we can share and model the love of Christ in all our communities.

This is an exciting time to be part of the Diocese, and we can see already where God is bringing gentle growth. Geographically diverse, we have 380 churches and around 200 clergy, including curates and retired clergy.

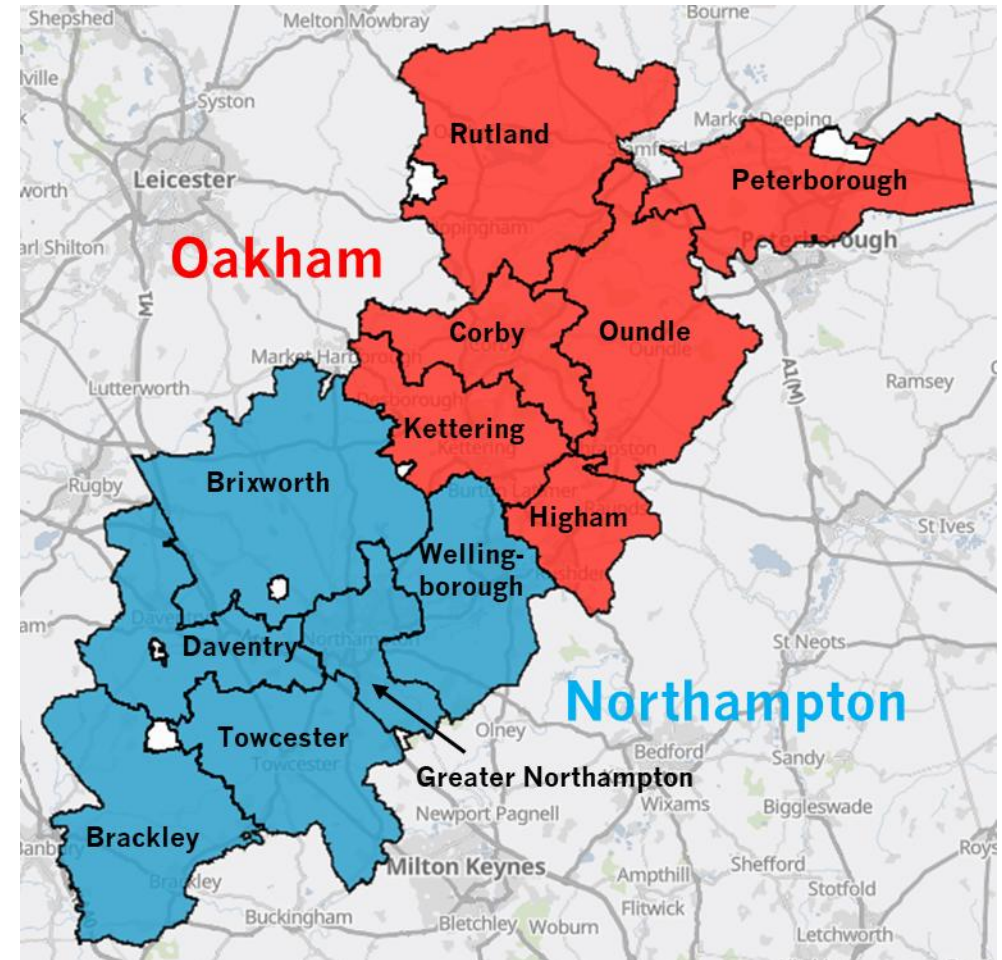
We cover 3 counties – Rutland, Northamptonshire and part of Cambridgeshire – and have good links with our civic leaders.

We have presence in both urban and rural settings and rejoice in the diversity of worship styles that exist across the diocese. With 12 Deaneries, it is possible to get to know local clergy well and our Rural Deans works hard to encourage mutual working and support.

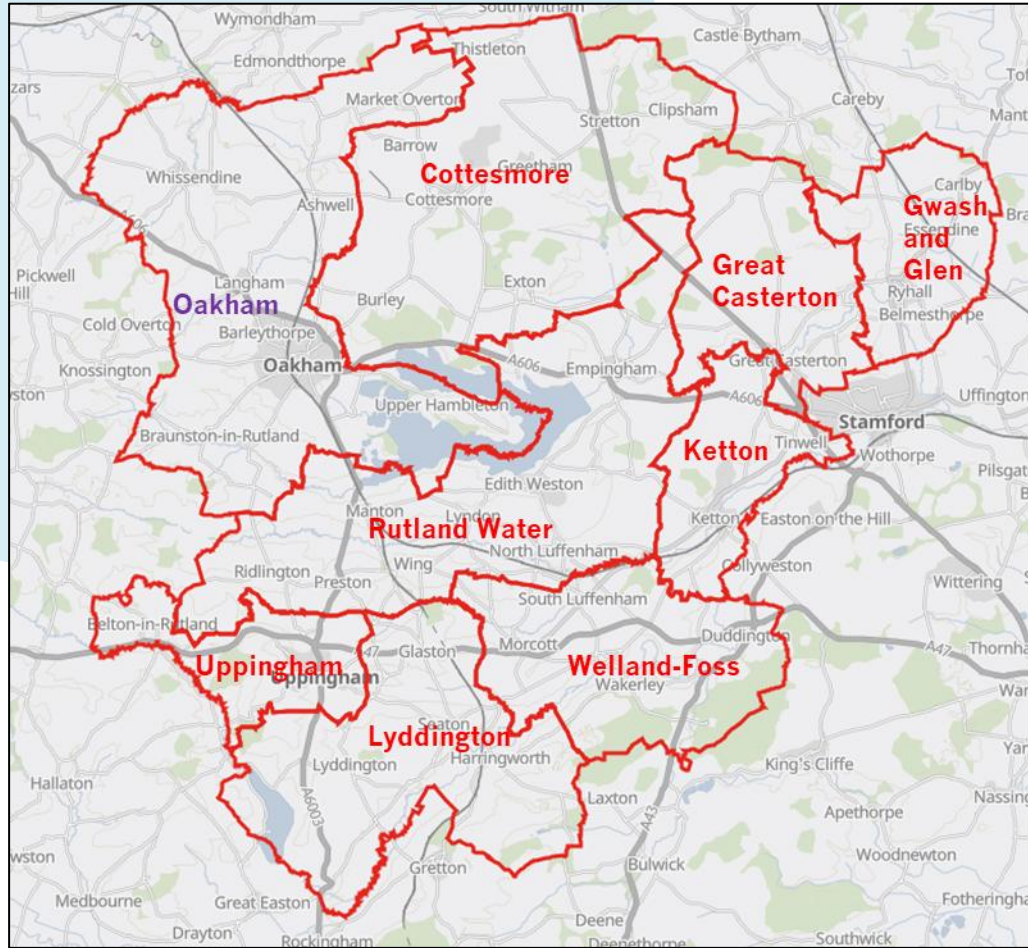
The 39th Bishop of Peterborough is the Right Reverend Debbie Sellin. Bishop Debbie was installed in March 2024.

The Diocese splits into 2 Archdeaconries. Northampton to the south and Oakham to the north.

Each has 6 deaneries. The Oakham Team Benefice sits in the Rutland Deanery within the Oakham Archdeaconry.



Our Diocese and Deanery (continued)



Benefices in Rutland Deanery

Parishes and churches in Oakham Team Ministry



[Back to Contents](#)

Oakham

Oakham is the county town of Rutland; an ancient town in a beautiful rural setting. It was voted one of the best places to live in the Midlands by The Times in March 2025. [All Saints Parish Church](#), [Oakham Castle](#) and [Oakham School](#) are at the centre of this historic town where residents and visitors, young and old mix in its old streets lined with stone built homes and shops.

The High Street provides good local amenities- independent and national shops, cafes and restaurants, a twice weekly market and a monthly farmers' market. [Rutland County Museum](#) and the Library are nearby. The town has 4 supermarkets, 3 on the periphery.

There are [hourly train services from Oakham Station](#) – west to Leicester and Birmingham and east to Peterborough, Cambridge and Stansted Airport. Regular trains run to London from Peterborough and Leicester. A trip to the Diocesan Office in Peterborough takes 45 minutes. [Buses that travel to nearby towns and a local 'hopper' style bus service](#) also serve some villages.

There is some light industry within the town, though many residents commute to surrounding towns and cities for work.

Oakham's central location and its proximity to the A1 invites many retired people to live here. Recent housing development has increased the population to about 12,000 and the town is becoming more socially mixed. Though it is largely White British, this is slowly changing.

More socio-economic data can be found [here](#).



Oakham – All Saints church, Oakham Castle and Oakham School



Oakham Market Place and High St.

The County of Rutland

Rutland is a very attractive place to live at the centre of England and takes pride in being the smallest county. As a rural county, it maintains a farming tradition, has an older population living in the picturesque villages but also offers excellent schools, music, sporting and leisure facilities.

The two towns of [Oakham](#) and [Uppingham](#) are complemented by many beautiful small villages, most with historical parish churches. In these traditional villages, the church is physically and socially the heart of the community, the focus of activity for the benefit of all through church services, celebrations and community events. Ride and Stride is well supported across the county.

Nearby [Rutland Water](#) is a site of Special Scientific Interest and a Special Protection Area for wild birds and nature conservation. It offers many activities including sailing, walking, fishing, bird watching and twenty-six miles of cycle paths, drawing large numbers of visitors annually.

HMP Stocken, St Georges Barracks (North Luffenham) and Kendrew Barracks (Cottesmore) are all within the county.



Hambleton Peninsula



Egleton Nature Reserve



Normanton Church

Schools

Oakham has five primary schools with good Ofsted ratings

- [Oakham C of E Primary School](#)
- [Brooke Hill Academy](#)
- [Catmose Primary School](#)
- [English Martyrs Roman Catholic Primary School](#)
- One prep school in the private sector - [Brooke Priory School](#)
- Oakham Shires School provides for pupils with special needs
- The villages of [Langham](#) and [Whissendine](#) also have very popular CEVC primary schools.

There are two very good secondary schools in Oakham

- [Catmose College](#) (11-16) and [Harington School](#) (16-18) sharing the same site
- In the independent sector, [Oakham School](#) takes both boarders and day pupils (11-18).

Beyond Oakham there are three other good county secondary schools in Rutland

- [Great Casterton College](#)
- [Uppingham Community College](#)
- In the independent sector, [Uppingham School](#)



*Oakham C of E
primary*



*The Harington
School*

Medical Services and Care



Rutland Memorial Hospital

Oakham has a large, busy [GP practice](#) located beside the [Rutland Memorial Hospital](#) which has a minor injuries unit and some care wards. Further local care provision is at nearby Melton Mowbray.

Good, large hospitals are within a 45 minutes' drive to the east at Peterborough District Hospital or the three University Hospitals of Leicester to the west.

There are several dental practices in the town.

There is both residential care and sheltered accommodation for older people.



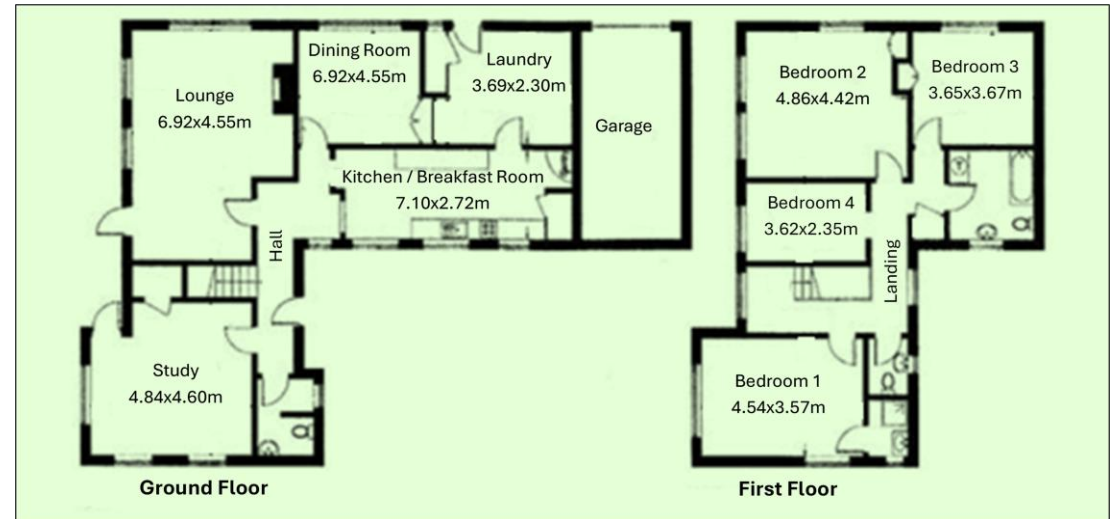
Oakham Medical Practice

Your new home

The Vicarage is situated at 2 Vicarage Road, Oakham, Rutland LE15 6EG

Set on a good-sized corner plot and surrounded by a mature garden, the vicarage is a large four bedroomed detached house built in the early 1960's, close to the town centre and a five-minute walk across the park to the church. It has gas fired heating and an attached single garage with parking space for several cars on the front driveway. Further details can be found at the link below.

[All Saints Vicarage – further details](#)



A message from the Archdeacon of Oakham

Is God calling you here?

In Peterborough Diocese we are looking to the future with hope and excitement for what God is doing among us. We are in the early stages of developing a missional vision and strategy for the Diocese, with an emphasis on supporting parishes and clergy in their ministry and mission, as well as a focus on wellbeing.

I am delighted that you are discerning whether this post is right for you and am praying for you. We are seeking a leader with significant parish experience, who is excited about the mission potential of this post. There will also be the opportunity to think more widely, with the Diocesan staff, about how the churches in Oakham and Uppingham (also with a new incumbent) might work creatively in supporting the wider mission within the Deanery of Rutland.

Venerable Alison Booker, Archdeacon of Oakham



Contact Information



Informal contact can be made with:

The Rural Dean The Revd Canon Jane Baxter: revjanebaxter@gmail.com.

01572 822717 or 07487 509 807

Or

The Archdeacon of Oakham The Venerable Alison Booker:

archdeacon.oakham@peterborough-diocese.org.uk

Archdeacon's office: Cheryl Cullen (PA). 01733 887019 Pa.archdeacons@peterborough-diocese.org.uk

An application form can be obtained from the Diocesan website, vacancies section:

www.peterborough-diocese.org.uk/vacancies

Appendix 1 – The northern parishes

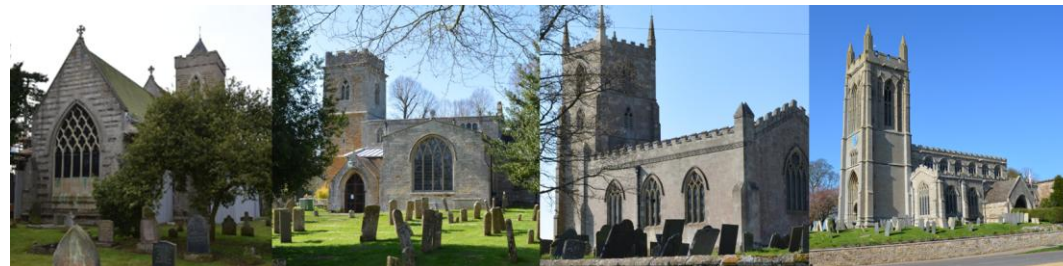


Introduction by the Team Vicar, Rev. Deborah Marsh

I have served as Team Vicar with responsibility for the four Northern Parishes of Whissendine, Ashwell, Market Overton, and Teigh since February 2018. The parishes are each uniquely themselves, having been so for hundreds of years, while recognising that they are part of a wider team centred on Oakham. The abrupt stop that the Covid pandemic provided in 2020, brought challenges and blessings as each church responded to the call 'to be the Christian presence in their community'. That response has shaped who we currently are and also enabled a greater openness to change as needed in the church for the 21st century. The importance of having church buildings open every day as a place for people to seek solace and an encounter with God and how regular prayer is vital to the wellbeing of the church, have been valuable lessons learnt.

The northern parishes of the team regard themselves as inclusive and three of the PCCs have agreed in principle to accept the use of the Church of England Prayers of Love and Faith and it has been agreed that the relevant PCC will be informed if/when a same sex couple requests a prayerful recognition of their union in one of the churches. The exception to this is Whissendine where the discussion has not reached a conclusion. As we look to the future we hope to keep building on the involvement of all in the life of each church, being confident disciples of Christ who are creative in including the gifts of all and compassionate in responding to the needs of all.

We are praying for a new Team Rector who will honour the individuality of each parish and bring new insights of how to draw us together as the body of Christ in this place at this time and lead us beyond in sharing the Gospel of Christ.



The Northern Parishes: **St. Mary, Ashwell**

The village

Set in the heart of Ashwell a small village of 125 homes, St Mary's church is most notable for an 1850 restoration project by William Butterfield, which altered the building significantly both internally and externally. The village population is 270 with 32 on the electoral roll.



Ringling the refurbished bells



Baptism Party

Church life

St Mary's is very much part of the community and welcomes all. We have a small but loyal and committed congregation, numbering between 14 – 20 and mostly over 60 years old. The church is open daily during working hours for quiet prayer and reflection.

Services are fortnightly - Holy Communion and Morning Worship using Common Worship. An evening prayer service is held in the intervening weeks, with a small but loyal attendance.

Services at festivals are well attended, particularly Remembrance and the Christmas Eve Carol/Crib Services.

House groups are run on a team-wide basis across the four northern parishes of Ashwell, Market Overton, Teigh and Whissendine.

We have a social area at the rear of the church, a church tour and trail, an archive of the history of Ashwell and a book swap scheme. The bells, which had not rung for over fifty years, have been recently refurbished, financed by a generous benefactor. A small group are now learning to ring them under the tutelage of the All Saints, Oakham tower captain.

[Latest statistics for mission figures](#)

Church and community engagement

As the village does not have a village green, the graveyard is well used - villagers with their dogs, walkers and cyclists, and families visiting graves. A seating area, set at the rear of the churchyard and a reflection walk through the wild area, is used by individuals seeking peace and calm.

The graveyard is well cared for with parts of the graveyard left wild, areas with more modern graves closely mown and others mown less frequently. Churchyard working parties are organised when needed to tidy graves, plants bulbs etc.

We run a monthly soup lunch in the nearby village hall and work closely with the village hall committee for village events.

Church finances

We cover the clergy expenses with planned giving and pay our parish share annually. In the main our finances are healthy. Re-roofing of the church in 2017 has contributed greatly to keeping the fabric of the church in good condition.

Plans to install a composting toilet in the churchyard are well advanced, a faculty application has been made and the DAC are supportive. A generous donation from the biennial village fete has been of great help in raising the funds.



Social Area

The Northern Parishes:

St Peter and St Paul, Market Overton

The Village

Market Overton village enjoys a great pub, a village shop, an active village hall, bowling and cricket clubs, [the Lodge Trust, a Christian Organisation](#) providing supported housing and employment for adults with learning difficulties, a doctor's surgery and a thriving industrial estate.



Loved Ones service

Church life and services

We are a friendly, welcoming village church worshipping in a traditional Anglican style, gathering every Sunday at 10am, alternating Holy Communion with Morning Worship. Led by Revd Deborah Marsh supported by Curate Alison Long and some very strong lay involvement.

To complement our Sunday Worship, we hold Special services where we make an extra effort to involve the village: Village Feast, Pet Service, Loved Ones, Harvest & Remembrance to name a few.

In recent years our focus has been on sustaining faithful worship and pastoral care; looking forward, we hope to deepen community engagement and ensure long-term sustainability.

Attendance averages around 16 on Sundays (higher at festivals).

[Latest statistics for mission figures](#)

Church community engagement

Our church building is a valued village hub, known for being open daily for prayer, stillness and community events.

Church finances

Annual income is c.£10k, expenditure c.£19k, including £10k Parish Share. We are looking at how we can improve this.

Our strengths

- Warm welcome and strong pastoral care
- Committed lay leadership and shared ministry
- Traditional worship rooted in village life

Our challenges / opportunities:

- Opportunity to broaden engagement and attendance
- Strengthening financial sustainability
- Enabling wider community use of our building



Twixtmas Concert



Church and Churchyard in winter

The Northern Parishes: **Holy Trinity, Teigh**

The Village

Teigh is a hamlet with a population of about 60. There are no shops, but a bus service runs between Melton and Oakham. There are 3 working farms in the village, and the age range is considerable from over 90 down to teenagers, which is noticeable at Christmas and Harvest Festival, which are well supported.



*Pulpit and
Reading desk
in Teigh
Church*

Church life

The church is open every day and there is a seat in the churchyard that walkers and bicyclists appreciate, admiring the view across the vale to Whissendine.

Our services are led by our team Vicar, Deborah, and we have 3 Sunday services a month, Holy Communion, Evening Prayer & Matins - all from the Book of Common Prayer. We have booklets for all services, to assist those who struggle with the Prayer Books.

We have a weekly morning prayer on Wednesdays as well.

We no longer have an organist, except for major services, but find iTunes and a decent speaker enables us to enjoy singing.

Fortunately, the church is warm, has excellent acoustics and is not very big (it was re-built in 1789 by the Earl of Harborough).

The electoral roll is 13, and we have small but stable numbers for our regular services and have 40-50 people for Harvest Festival and the Christmas Carol services, and 25-30 communicants on both Easter Day & Christmas Day.

[Latest statistics for mission figures](#)

Finances

Thanks to a continuous line of excellent treasurers, the church is on a sound footing so we are able to pay our parish share and manage our Quinquennial expenses. Although the village community does not necessarily come to church regularly, they do support it financially, which is a blessing.

Part of the churchyard is mown, and the rest left and only mowed properly once a year, which allows plenty of opportunity for wildlife to flourish in harmony with us.

We certainly have hedgehogs and a Bramley apple tree provides a feast for the blackbirds, fieldfares and crows throughout the winter. There are bats in the belfry, but not in the church. There are little owls in the sycamore tree in the churchyard, and tawny owls as well, and of course grey squirrels thanks to the walnut and chestnut trees



Flemish painting and Reredos in Teigh Church

The Northern Parishes: **St. Andrew, Whissendine**

The Village

Whissendine is one of Rutland's largest villages with a population of 1,400 that will continue to grow with new residential development underway. The village itself is well served with a village hall, sports club, pub and general stores and numerous village groups and activities



Toddler Group

Church life and services

St Andrews offers Sunday services each week alternating between Communion and Morning Worship and is fortunate in recent years to have benefitted from interns supervised by Rev Deborah. In addition to our regular Sunday worship, we also hold Monday Prayer and Thursday Fellowship meetings as well as an active toddlers and carers group (Fishes) that meets on Wednesday mornings.

We have a well engaged congregation of welcomers, stewards, intercession leaders, bell-ringers, organists, gardeners, cleaners and many, many more! A small team supports our team vicar in leading a weekly service at our [C of E Primary School](#). Our electoral roll is in the mid 90's with average Sunday attendance circa 35 and considerably swelled for main festival and end of school term services.

We are blessed with enthusiastic and committed worshippers who find strength and support in each other. Our demographic is an aging congregation, and we prayerfully recognise the challenge of matching our ambition with our capability to deliver!

[Latest statistics for mission figures](#)

Church community engagement

St Andrews enjoys strong community engagement hosting the annual village craft and produce Show; a biennial flower festive and a well used village library. Increasingly we want to position St Andrews as a community church, open for all.

Church finances

Financially, we fully fund our parish share and through regular giving and fund raising operate with a small deficit that we currently manage to cover from reserves. We benefit from a legacy, the interest from which it is able to finance the upkeep of our substantial grade 1 listed building.



Whissendine Church

[Back to Contents](#)

Appendix 2 - The Southern Parishes



Introduction by the Team Vicar, Rev. Jenni Duffy

As Team Vicar serving the four southern parishes, I warmly welcome you to this parish profile. Braunston, Brooke, Egleton and Hambleton are small, yet faithful, rural communities, each rooted in its village and shaped by prayer, tradition and generous service. Our churches are focal points of village life, hosting worship, festivals and community events that draw well beyond our regular congregations, particularly at agricultural celebrations, Remembrance and Christmas.

Worship style across these parishes is varied and sustained by committed PCC's, readers, musicians and volunteers who care well for their historic buildings and for one another. We offer a warm, inclusive welcome to visitors on Sundays and throughout the week, and all four PCC's have adopted the use of Prayers of Love and Faith. We seek a Team Rector who values rural ministry, collaboration, inclusivity and pastoral presence, and who will help us engage new residents and discern God's future for our shared life and mission.



The Southern Parishes: **All Saints, Braunston in Rutland**

The Village

The village of Braunston has a population of 450, the majority being professionals who commute and work outside the village or are retired. The church, with the adjacent village hall and pub, are the focal point of the village.

Church life and services

We are a friendly, welcoming church community, worshipping in a largely “low church” style.

Weekly Sunday services are held at 11.00am led by a combination of our Team Vicar or a lay reader, an evangelist or visiting team clergy. Supporting an ageing congregation is an important part of our activity. We have an organist once a month and at our other services, music is led by a singing group, or words and music are presented on a large monitor. We would like to develop more innovative musical worship in the absence of an organist.

[Latest statistics for mission figures](#)

We have 29 on our electoral role, with a typical weekly attendance of 12-16 but numbers increase to 40 or 50 for our Pet service and our Memory Services for recently bereaved family and friends. At our special services, including Remembrance Sunday and our Journey to Jesus travelling nativity on Christmas Eve, attendance is typically over 100.

We hold Bible Study courses through the year and enjoy Away Days at nearby [Launde Abbey](#).



Journey to Jesus Village Nativity

Church community engagement

Church members are caring and supportive of each other and the village community. A monthly church-run afternoon tea social draws villagers together. Looking forward, we would like to engage the interest and skills of new residents as the village expands, increasing our congregation and its age range through our outward looking services, prayer and personal contacts. We are developing the churchyard as a nature friendly reflective resource for the village. However, we are challenged by the presence of bees & wasps and how to remove them from the church fabric without harming the bats. This impacts upon our continuing worship in the church and in the summer months we have been using the village hall instead.

Church finances

Annual operating costs are around £27,000 which has always been covered by income from giving. Additional fund raising enables between £10, 000 to £20,000 to be spent as needed on fabric maintenance.



Away Day at Launde Abbey

The Southern Parishes St Peter, Brooke

The Village

Brooke village is two miles south of Oakham and has 23 houses in a parish of 50 residents of which 20 are on the electoral roll. There are no shops, pubs, or schools and no public transport. The population is generally middle aged or elderly.

Church life and services

The PCC is very active with shared responsibility for services, cleaning, flowers, finance, promotion and general maintenance. The church building and grounds are in excellent condition.

The congregation is led by our team Vicar, a Reader or visiting clergy. Evening Prayer attracts an average congregation of 14. Numbers for the 8am Holy Communion have dwindled considerably over the last five years, but moving one morning service a month to a 6pm service has proved positive. As a very rural community all the agricultural festivals are celebrated, and numbers are often doubled for such occasions.

[Latest statistics for mission figures](#)

Carol and Remembrance Services can attract congregations of 50. A new organ was installed in 2025 and is regularly played by a professional organist. A peal of six bells is rung for evening services and special occasions. Uppingham Church Choir supports our Patronal Festival annually and visiting choirs are always welcomed. The church is open daily from 10am until 5pm

Weekly services alternate between Evening Prayer (6pm) and Holy Communion (8am or 6pm). All evening services revert to 3pm for the winter months. Compline is held at 6.30pm on the last Thursday of each month. All services are Book of Common Prayer. Special services other than Harvest, Easter and Christmas include all Agricultural Festivals, Patronal, and an annual Bell Service and Memories Service.

There are no facilities within the church.



Brooke Church

Church community engagement

The church hosts the Annual Village Meeting. A fundraising musical event is held annually.

A collection of foodstuffs is made for the [Rutland Food Bank](#) at our Harvest Festival.

Church finances

Our finances are sound, we are solvent. The Parish Share is paid in full.



Inside the church

The Southern Parishes: St Edmund, King and Martyr, Egleton

The Village

Egleton is a small village on the edge of Rutland Water. With just 41 houses, the village population of 70 adults and 11 children has both retired and working residents. A small village hall close to the church provides a resource for village social activity.



Carol Service Refreshments

Church life and services

The church dates from the [12th century](#) and has been carefully maintained. In the last full-scale programme of restoration, the chancel and nave have been redecorated. The chancel roof has been covered in stainless steel. Our regular church congregation numbers between 16 and 24. Additional village members and visitors increase the congregation, particularly at Harvest and Christmas. We have a regular organist and members of the congregation prepare the sanctuary, provide flowers, clean the church, read the lessons and lead intercessions.

The PCC is small but active.

Two services of Holy Communion (Common Worship - traditional language) are held each month, alternating with the nearby parish of Hambleton. A time for Prayer is held on the first Tuesday of each month. Reflecting the rural surroundings, festivals such as Rogation and Lammas are marked with special services as is our patronal day.

[Latest statistics for mission figures](#)

Church community engagement

Frequent email contact is established between members of the congregation and a Facebook page reaches out to the wider world.

A donation box in the porch collects regular supplies for [Rutland Foodbank](#). The church is open every day for everyone; the churchyard and surrounding hedges are well cared for. The churchyard is a popular spot to watch bats leaving their nursery on summer evenings to find food and, with specialist advice, the building is adapted to ensure our mutual comfort.



*Recently restored
Coat of Arms of
George III above
Chancel Arch and
Tympanum*

Visit by Rutland U3A



The Southern Parishes: St Andrew, Hambleton

The Village

Hambleton village with a population of 126, is a small community on the peninsula overlooking Rutland Water. [The church is medieval, with a major Victorian re-ordering.](#)

Church life and services

There are 24 on the Electoral Roll. Our regular congregation is 15-20, most over 60 years old. Occasionally couples planning to marry at St Andrews join us: we have three or four weddings a year. The PCC is active, and the building and contents are well maintained. Villagers assist with maintenance and technical projects. The tower captain arranges regular ringing. A rota of 12 volunteer families ensure that the church is open every day. Common Worship (traditional language) services of Communion are held twice monthly. There is a lunchtime prayer service on the third Tuesday of the month. The prayer request station and votive candle stand are both often used. Special services for Mothering Sunday, Remembrance Sunday and St Andrew's day and through the Christmas season are attended by 30-60, which includes visiting families.



Hambleton Wedding



Exhibition of cribs

[Latest statistics for mission figures](#)

[Back to Contents](#)

Church community engagement

Our small community is kept in touch with church activities via village e-mail and Christmas cards, and Church members play an active part in village social and fundraising activities.

Church finances

The Parish Share and clergy expenses have always been paid in full. We have been fundraising for repairs to our 1890 organ and work is expected to start in February 2026. The slate and lead roofing were recently replaced and much of the church repointed. We were able to give prompt attention to minor repair work identified by the 2025 QI. A local business largely covers the cost of churchyard maintenance, and the church has always been successfully funded by awards of grants, interest free loans, private donations and from fundraising events. Charitable giving is made at Harvest, Remembrance Sunday and at the Carols/Christingle Service.



Bell Ringers