



ST JOHN'S

NEW MALDEN

PARISH PROFILE 2025





Welcome to this profile for St John the Divine, New Malden. I am delighted that you are considering applying for the post of Associate Vicar. This is a 'house-for-duty' post with the house – 2 California Road (next door to St John's) – provided by the parish. Recent developments in the locality mean that many exciting opportunities for mission are developing around St John's. Our priority is to appoint a minister who is committed to developing our ministry and mission and a team player who will work well with both the parish team and with the members of St John's, in building upon the excellent work already undertaken.

What follows is further information about New Malden, the Parish and St John's. We hope that this will inform your thinking and encourage you to see the opportunities contained in this post.

The Reverend Stephen Kuhrt
Vicar of New Malden and Coombe

The Parish of New Malden and Coombe

The parish of New Malden and Coombe contains two churches, Christ Church and St John's. Both churches stand broadly within the evangelical tradition of the Church of England with its emphasis on drawing people into active faith in Jesus Christ and applying the Bible to everyday life. This is linked to an emphasis on the value and opportunities provided by being part of the Church of England and the desire to develop greater openness to the Holy Spirit within our worship. In recent years, the parish has also sought to pursue a more active social agenda with the aim of sharing God's transforming love with marginalised people within the local community.

Stephen Kuhrt has been vicar of the parish since 2007, having also been in the parish for his curacy from 2003. Stephen oversees both churches although most of his time is spent leading Christ Church. Christ Church Primary School (one school but with separate sites for the Infants and Junior sections) is an important part of the parish and its ministry. Christ Church has a full

time Youth and Children's Minister, Nathan Larkin and two lay readers, Katy Loffman and Tim Davis with Roger Parham as lay reader at St John's.

The forerunner of St John's – the Christ Church Mission Room – was established on the Kingston Road in 1885 to share the good news of Jesus Christ in the poorer part of the parish. This became St John's and an official 'daughter-church' of Christ Church in 1939 when the current building was established. Since then, St John's has always had a full-time curate-in-charge, although in recent times we have used the title 'Associate Vicar'. We also use the more equal language of 'sister-church'. This is the first time that the post has been 'house-for-duty'. In 2008, the Parochial Church Council (PCC), under Stephen's leadership, established a District Church Council (DCC) empowered with a degree of autonomy for St John's. In normal times, the DCC is chaired by the Associate Vicar of St John's and has its own Finance, Fabric and Pastoral subcommittees.

Although Christ Church and St John's have each developed their own identity, the clergy and staff team work together on many matters. This includes a weekly staff meeting on Tuesday mornings comprising time for worship, study and prayer as well as administrative matters. Stephen also meets monthly for a one-to-one meeting with the Associate Vicar. Funeral ministry is shared across the clergy team and another important collaborative ministry is providing collective worship/assemblies for the Infant and Junior sections at Christ Church School and its nursery on Wednesday mornings. Four services for the school are held at Christ Church each year (Harvest, Christmas, Easter and 'End of Year'), jointly led by Stephen and the Associate Vicar.

The Parish Office, located at Christ Church, provides administrative support for both churches. Elizabeth Hill, as Parish Administrator, handles bookings, expenses, the ordering of supplies, maintenance, bills, utilities and returns to the diocese as well as the administrative side of weddings, funerals and baptisms. Anna Larkin as Finance and Communications Officer for the parish handles bookkeeping, publicity (particularly the production of posters and flyers), weekly mailshots and printing. The Parish Office is staffed every morning during the week and several afternoons. Elizabeth and Anna also field phone calls and enquiries about Christ Church and St John's.

New Malden

New Malden is very well placed for transport links. It is just over twenty minutes by train from central London (frequent service) and about the same driving time from the Surrey Hills, designated an 'Area of Outstanding Beauty' in 1958. It sits in the Royal Borough of Kingston-upon-Thames and is well connected to the national motorway network with Junction 10 of the M25 being twenty minutes away and Junction 9 being about thirty minutes away. There is also an excellent bus network in New Malden linking it to surrounding towns and to Heathrow Airport.

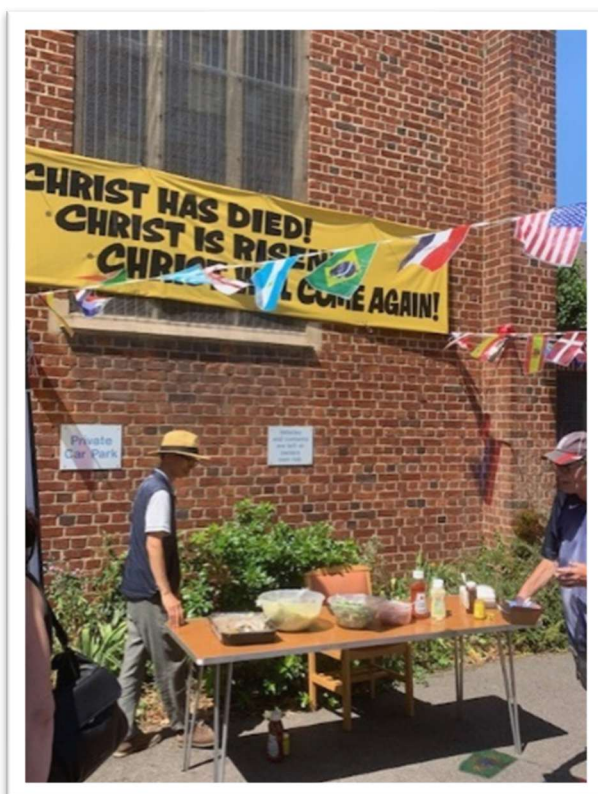
New Malden sits roughly halfway between the towns of Kingston and Wimbledon. Kingston was ranked 5th in the 2024 rankings of the top twenty-five places to shop in England as listed by [Newmark Vitality Rankings](#) (Wimbledon Village was ranked 3rd). New Malden, itself, also

has a thriving High Street with established chains such as Waitrose, M&S Food, Boots and Lidl as well as a number of independent shops, cafes and restaurants. A number of businesses and restaurants are Korean-run as New Malden boasts Europe's highest number of ex-patriate South Koreans. There are also around 700 North Koreans in the area, the largest ex-patriate North Korean community in the world.

In addition to the High Street, New Malden has a leisure centre, swimming pool and parks. There are theatres and cinemas as well as shopping, restaurants and nightlife in both Kingston and Wimbledon.

The area is also well placed for open spaces; Richmond Park, Bushey Park, Wimbledon Common and the Thames Path all being within easy reach for relaxation or exercise. For garden enthusiasts RHS Wisley is twenty minutes away and Kew Gardens is in the neighbouring borough of Richmond-upon-Thames; for family entertainment Chessington World of Adventures lies within the Kingston borough.

For sporting enthusiasts, there are a number of local clubs and, for those who enjoy watching, Chelsea Women play only a five-minute walk from the church. Corinthian Casuals also play in the borough and Wimbledon tennis is within easy reach.



The borough is well served by good schools and many are in New Malden. At primary level, St John's has strong links with Christ Church (last Ofsted – Good) and King's Oak (Good). King's Oak is a two-minute walk away and the children come to the church at Harvest and Advent as well as for a year 6 transition to secondary session. Also in New Malden are Corpus Christi, a Roman Catholic school (Good), Coombe Hill Infant (Good) and Juniors (Outstanding) and Burlington Infant (Outstanding) and Junior Schools (Good).

At secondary level are Coombe Girls (Good), Coombe Boys (Good) both with mixed sixth-forms and two Roman Catholic schools: Richard Challoner Boys (Outstanding) and Holy Cross Girls (Good),

again with mixed sixth forms. There are also a number of highly selective, maintained secondary schools within easy travelling distance, including Tiffin Boys, Tiffin Girls, Nonsuch and Sutton Grammar School. There are also a number of private schools in the area.

The area around St John's

St. John's is situated on the corner of Kingston Road and California Road, roughly halfway between New Malden and Kingston town centre, and is on the parish boundary with St Peter's, Norbiton (there is an agreement with St Peter's for St John's to operate within the eastern part of St Peter's parish). There has been a lot of change since the church was founded to serve the poorer part of the parish but there are still pockets of deprivation around St John's.



Immediately opposite St John's is a very recently built block of owner-occupied flats and adjacent to them is a large Aldi supermarket and a Matalan clothing store. Less than a quarter of a mile further down the road is a block of student accommodation built a few years ago. On the same side of the road as St John's there is a parade of independent shops

and cafes, which includes two general stores, a post office, a specialised fishmonger's and barber's shops.

Less than two minutes' walk from the church is Kingston Road recreation ground and around five minutes' walk away is Dickerage Lane Rec., both of which contain a children's playground. The Kingston Road recreation ground also hosts [Norbiton Community fridge](#). A little further away (ten minutes) is Green Lane Park which as well as having a children's playground, leads to the Hogsmill River Walk, a popular walking spot for local people.

There is great deal of vehicular traffic passing the church, partly due to its location between Kingston and Wimbledon and partly due to the presence of Aldi and Matalan on the opposite side of Kingston Road.

Pedestrian footfall is not as prominent but there is a bus stop right outside the church and it becomes particularly busy when parents collect their children from King's Oak School and when Chelsea Women are playing at home (often on a Sunday). The recent opening of a fish shop and green grocery on the opposite corner of California Road has added significantly to activity in the area.

The church has a forecourt which is used for the twice-monthly Street Café and the Annual Fun Day.

As stated above, although the area has unsurprisingly changed since 1885 it is still an area where there is deprivation. It is now possible to access data for the demography of quite small areas known as LSOAs (Lower Layer Super Output Areas) and St John's stands on the border of two of those areas. Together those two areas comprise 3,625 people and 1,520 dwellings. Half of those dwelling units are terraced houses with the majority of the rest consisting of flats.



The general demography of the area and some of the deprivation statistics for the area differ in certain categories from those for Kingston as a whole and also, in many cases, from the figures for England (*figures given here are mainly from the 2021 census and the most recent Annual Population Survey*).

The percentage of 15–24-year-olds in the area is significantly higher than in Kingston borough and in England with the percentage of 20-24 year-olds in the Eastern LSOA being double that of both Kingston and England. Correspondingly, the percentage of those aged over 55 is lower than the Kingston and England figures and more than half the equivalent percentages when looking at the over 70s.

Other significant differences with regard to Kingston and England are:

- A higher percentage of people with Asian origins
- A higher percentage of Muslims (14.4% compared with 8% for Kingston and 6.7% for England)
- A higher percentage of lone parents (double that of Kingston and comprising 244 people)

The deprivation in the area is shown by the fact that 251 children live in absolute or low relative poverty, a percentage figure much higher than the Kingston figure but very much in line with the England number. 162 households also live in fuel poverty.

The June 2024 figures for people receiving Universal Credit show 579 in our area, a percentage more than double that for Kingston and significantly higher than for England. Additionally, the figures for people claiming Out of Work benefit show a similar trend (160 people claiming in the area around St John's).

The mission field for which St John's was founded 139 years ago may have changed in character over the years but is still very much there.

Sunday Services



Our Sunday service currently takes place at St John's at 10.30 am with Holy Communion celebrated once a month. This is followed by refreshments in the church lounge and, once a month, a popular 'bring and share' lunch. The services could be described as low church and open evangelical. Robes are not worn by those officiating. Sermon topics usually follow a thematic series devised by the Associate Vicar of St

John's. Since Covid-19, St John's has live-streamed its services which are then made available on YouTube and Facebook. There is currently one lay reader at St John's, Roger Parham, and a team of lay members who share the leading and preaching at services.

Sung worship is provided by a committed band of musicians and singers, made up of long-term members as well as younger people. The band aims to use a wide-ranging repertoire of music extending from occasional traditional hymns to modern worship songs.



Children stay in the service for the first fifteen minutes before going out to their own group which is currently for children of any age. Christ Church recently admitted baptised children to Holy Communion and this is currently under discussion at St John's.

The congregation at St John's is ethnically diverse with a particularly large group of Koreans. This diversity is something that

we are very enthusiastic about and place a priority upon maintaining and developing.

Pastoral Care and Prayer meetings

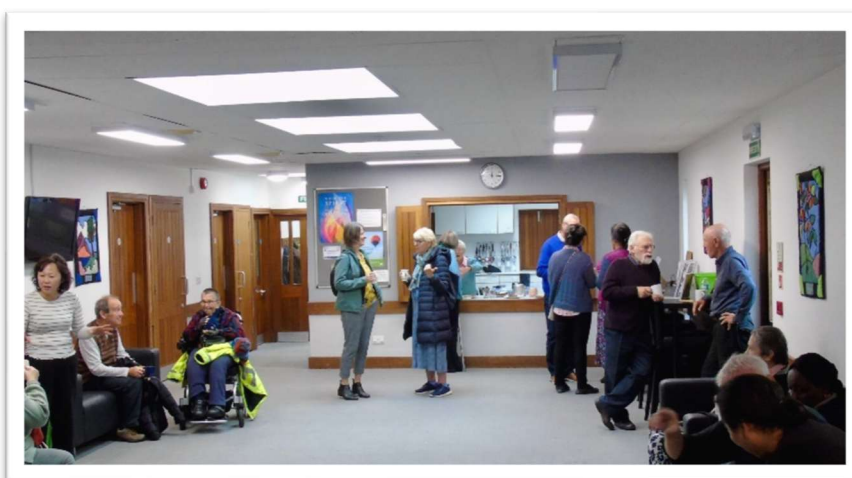
A group of six members of St John's meet, on a monthly basis, as a Pastoral Care group to share information in confidence and pray for the members and their known needs. In addition to this, individuals visit and contact those who are not able to attend church services. Home Communion is provided as and when needed. Currently, each Sunday evening at 6.30, a group of St John's people meet for about an hour to pray for the mission and ministry of St John's and for individuals who may need prayer. This is usually attended by between eight and eleven people and is seen as an integral part of St John's.



There is a prayer request box at the back of the church where visitors and church members can put requests for prayers. People attending the Saturday Street Café and Sunday service visitors are the main users of the box. Any item placed in there is removed and shared, in confidence, with the group who meet to pray on a Sunday evening.

In addition, there is an effective church 'prayer chain' where, if a member of the church needs urgent prayer, the prayer chain leader is contacted and a 'chain' of phone calls gets people praying.

The buildings at St John's



St John's is blessed with very good buildings, chiefly as a result of a major redevelopment in 1994 which joined the church to its hall, supplying in the process a spacious welcome area and lounge. On the ground floor, in addition to the church and

lounge, there are two meeting rooms, a large well-equipped kitchen, toilets and the hall. On the first floor there are two additional meeting rooms and a further room with kitchenette on the second floor. One of the first floor rooms has been developed in recent years to include a self-contained office space. This is shared with the Christians Against Poverty (CAP) workers



but can be used by the Associate Vicar in addition to the study in 2 California Road. We have Wi-Fi throughout the building. The large hall can accommodate over a hundred people and has recently been redecorated. St John's has a small car park providing spaces for around six cars and we have a part time cleaner/caretaker, Craig Edwards.

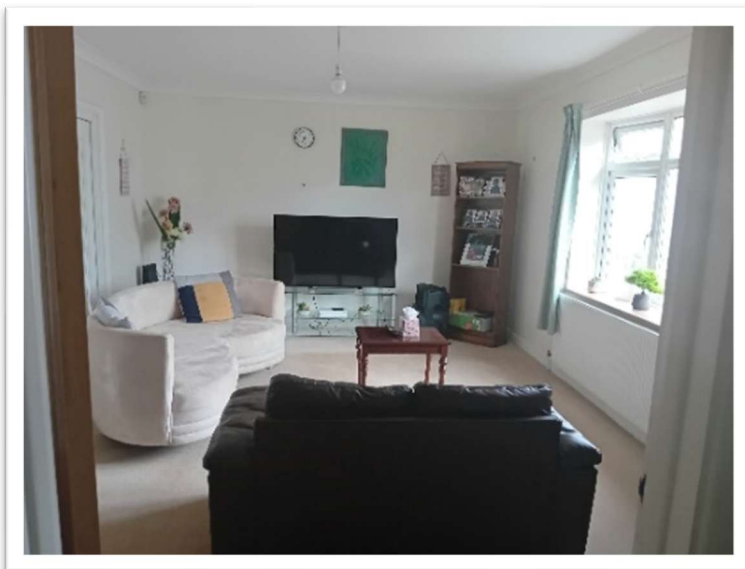
The church itself contains seating for around 170 people and space at the front for the band. A projection system was established some twelve years ago with the words used for songs and liturgy projected onto a screen. A refurbishment and upgrade for the sound system is currently being discussed.

2 California Road



The house for the Associate Vicar stands adjacent to the church complex and comprises a small Victorian cottage with a significant extension. The external walls were recently redecorated. The ground floor has a good-sized lounge, connected to a dining area by recently installed folding doors. From the dining room access can be made to the small, secluded garden.

The remainder of the ground floor has a study room, a kitchen through which access can be made to a utility room and a recently up-dated bathroom/shower room. The first floor has four bedrooms; two of a very good size. There is also a bathroom with a shower unit over the bath.



The District Church Council (DCC)

As mentioned, the DCC of St John's has a degree of autonomy delegated to it by the PCC. This includes the DCC being empowered to spend up to £2,000 with PCC approval required for any sums above this. The DCC is elected at a St John's Annual Meeting (held the week before the APCM at Christ Church) and is made up of the Associate Vicar, the two District Wardens of St John's, two representatives of Kingston Deanery Synod (ex-officio on the PCC), four PCC members and five additional DCC members. At present there are less members of the DCC than this provision allows. Stephen Kuhrt has chaired the DCC during the vacancy at St John's but in normal times, these meetings are chaired by the Associate Vicar.

Children and young people



Children and young people are made welcome at St John's and everyone would love to see more coming. Though currently small in number, we believe that the children who attend feel encouraged and treasured.

On a Sunday morning, we have a small group, of mostly primary aged children, who are regular but not weekly attendees. They are a

delightful group who enjoy each other's company and bring with them energy and enthusiasm. Our numbers are sometimes swelled by visiting grandchildren. For the leaders, a key skill is flexibility; to be able to adapt on the day to whoever comes. We are blessed with a pool of experienced volunteers, many of whom have worked in schools. We also have very good facilities with small rooms for group work and a big hall for more boisterous activities. We do not currently have a youth group but young people often find a place amongst the musicians in the band which is a great way of continuing our relationship.



As mentioned, the children join with the congregation for the start of the service and then go out to their own group. At Christmas, we have a Sunday morning scratch nativity service and a Christingle service on Christmas Eve; the first is very popular with our regular congregation and the second attended by many from outside the church. Tots in Tow (see local mission) is another part of our work with children.

Classes from the most local primary school, King's Oak, visit St John's at Harvest and Advent. As well as the clergy, lay members of St John's are involved in assemblies at Christ Church Primary School including [Open the Book](#) on Thursday mornings.

Beyond the work of the church, we have regular bookings by other groups working with children. We host a Hungarian community school twice a month, many children's parties and an after-school Bible club on a Friday run by Korean Christians.

There is opportunity for change and growth. We would love help in seeking God's guidance to build a strategy that would maximise the use of the resources we have.

The Mission of St John's in our locality



As mentioned, St John's was established to be a mission church to people in the local area. We are determined to continue this, maintaining and developing strategic forms of mission that share God's love in practical ways with those who live in our part of New Malden.

Arising from discussions in 2021, the DCC agreed the mission strapline '*Loving Jesus, each other and the community*' which covers the three dimensions of looking upwards (to worship and serve God), looking inwards (to encourage each other in our journey of faith and discipleship) and outwards (to be committed to loving and serving the wider community). The priorities set from this were:

Increasing believers: This recognised the strength of St John's in building relationships in the local community and sharing God's love through practical service whilst being less strong on proactively talking to others about Jesus and making opportunities for people to explore what it means to have a living faith in Jesus. This priority would in no way seek to undermine the long-standing priority of local social engagement, but rather to complement it with a greater confidence in sharing our faith in Jesus alongside that practical loving service, perhaps rediscovering something of the great commission.

Discipleship: with a particular focus around increasing our active serving membership, wanting to move towards a greater sense of every member ministry, developing a broader lay leadership that is more reflective of the diversity of our congregation (and in turn of the wider community – especially regarding age and ethnicity).

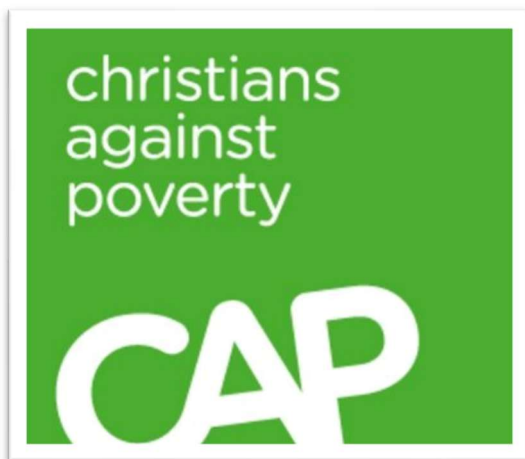
Growing children and youth ministry: This priority recognises that for the long-term viability of St John's, we need to have younger people

Improving church buildings: The heading here may be slightly misleading as we already have exceptional facilities within the church centre but the concern is more about appearance from outside in terms of welcome, hospitality and accessibility as well as considering our carbon footprint.

Cultivating community partnerships: Although this is already a strength of the church, in discussion it was recognised unanimously as an important area of continued focus, something in the very DNA of St John's.

As we have been without an Associate Vicar for a while, progress towards these goals has been slow but these priorities nevertheless give an indication of the character and concerns of the church.

Christians Against Poverty (CAP)



This initiative has been one of the most significant developments in the life of St John's. It seeks to respond to one of the most obvious areas of need in our local community. St John's is the official Debt Centre Partner Church for Wimbledon, New Malden and Kingston. We have now been open for ten years and during that time sixteen other churches have helped in the work, either financially or by providing volunteers, as we help people out of debt and walk alongside them showing them the love of God.

We raise around £30,000 per annum to operate the Debt Centre, the money coming from regular givers, churches and grants and we employ two people, a Centre manager (currently vacant) and a Debt Coach (both part-time). The work is overseen by a 'church line-manager' (i.e. a member of St John's and something on which CAP insist upon) and the congregation is very supportive of this aspect of the outreach of St John's. Many are volunteers who accompany the debt coaches to provide additional support when they visit a client. In 2023 alone, we saw 12 people become debt-free, clearing over £230,000 worth of debt. At least fifteen clients have come to faith in Jesus Christ through this work with several others recommitting their lives to him.

Abbeyfield Nursing Home

This is a home for people with dementia and is located about a hundred yards from St John's, at the other end of California Road. Several members of the church family take an informal service at the home once a month on a Thursday afternoon. The residents at Abbeyfield find it difficult to come to church so we bring church to them! Like all such ministry this can be challenging but is also deeply rewarding.

St John's Street Café



This takes advantage of the location of St John's on the busy Kingston Road. It takes place on the second and fourth Saturday mornings in the month between 10.00 am and 12.30 pm. Café style tables are set up in front of St John's on our grounds by the bus stop and this is supplemented by sofas and coffee tables in the lounge. We run the café all year round, even when it is very cold and wet outside. On such occasions, the café takes place entirely within our buildings with a large notice advertising this on the street. A key principle of the café is that the tea, coffee, squash and cake are served without charge. The café has been running for about ten years and we have found this a gentle way into the church community. Recently we have introduced table tennis as a feature of the café, and this encouraged a Hong Kong family and their friends to join us.



A gardening club has recently been set up to run at the same time as Street Café, to tend the raised beds at the front of the church. This initiative has been spearheaded by the EcoChurch group who are looking at ways in which the church can include care for the environment as part of its mission.

Tots in Tow



This takes place at St John's on Monday mornings from 10.00 am until 11.30 noon and welcomes all children below school age accompanied by their parent or another adult. In our large hall there are bikes and other toys for the children to ride, a small climbing frame, a toy kitchen and a train set as well as a dressing up rail where children can enjoy choosing a costume to wear. We also have a table with colouring materials. In the lounge and crèche room we have a variety of construction toys, numerous puzzles and a toy farm. There is a break where the children enjoy fruit and a variety of snacks along with a drink. Throughout the session, there is tea, coffee and biscuits available for the adults. The session ends with a time of singing for everyone present.

Kingston Road Runners

This running club was set up a few years ago and attracts both members of St John's and people from the local community. This group provides the opportunity to build further community and deeper relationships with both members of St John's and those currently outside of the church.



Young at Heart

In recognition of loneliness amongst older people isolated in their homes, this group was set up some years ago meeting twice a month with a lunch and activities. It is currently taking a break because of shortage of volunteers but we are keen to restart it. A group from Young at Heart exploring the Christian faith is still meeting.

Keep Fit

A 'Keep fit' group meets on a Monday evening, led by one of the church members and it provides the opportunity for people from the congregation and others with whom we have links, to support and challenge each other with some light exercise.



Summer Fun Day and Christmas Fair



Each year we have run a fair in the Summer and at Christmas as opportunities to welcome members of our local community.

Both are well attended and form a further part of building community and relationships with those who live around St John's.

This is very much a team effort, with commitment and contributions from the whole St John's congregation.



Social Media / Live Streaming



We have our own website www.sjnm.org and created our own Facebook page (St John's New Malden) provide information about the church and publicise events. A positive legacy of the Covid Pandemic is our commitment to live-streaming our Sunday morning service which reaches some in the local community who find it difficult to come in person and even people in other parts of the country.

Supporting Mission beyond St John's

Supporting mission beyond our local community is important to St John's. This includes the support of Kingston Churches Action on Homelessness (KCAH), Insight (an evangelistic group working in local schools) and Oxygen (another charity aiming to share God's love with young people in the local area).

St John's also has a long history of supporting overseas mission. In recent times we have focused on mission partners with whom we have a particular connection. This includes the Gamaliel project (Mission Africa), Mercy Teete (International Teams) and Phil Rugg (Arab World Media) There is a mission support group which keeps in touch with them and shares their news and needs with the congregation.

Relationships with other local churches

We host a small Korean church (around twenty members) on Sunday afternoons which meets between 2.00 and 4.00 pm led by Pastor Hwang. It also meets early on each weekday morning for a prayer meeting. We worship together with this church at Christmas and Easter.

St John's also plays an active part in New Malden Churches Together and has particularly close links with New Malden Baptist Church (NMBC) which is also on Kingston Road. In August, we

share services with NMBC, holding alternate weeks in each other's churches. St John's and NMBC members have also combined forces to work at the foodbank based at NMBC and the CAP (Christians Against Poverty) debt centre at St John's.

Safeguarding and St John's

We want to continue to build St John's as a community that values and respects everyone and cares for and supports each other. This involves creating a safe place for everyone and running all our activities in a way that minimises risks and keeps children, adults with care and support needs and everyone else as safe as we can.

We use the diocesan guidelines and policy manual, *A Safe Church*, which sets out best practice and how to respond if a situation arises. We have adopted Southwark Diocese's policies for our working with children, vulnerable adults and responding to domestic abuse. Penny Welsh serves as Parish Safeguarding Officer for St John's and is the first point of contact for any concerns or questions relating to safeguarding matters.

Finance and St John's

The majority of our income derives from planned congregational giving and from lettings.

Our key expenditures are the premises and the parish support fund. The parish owns the property at 2 California Road and St John's pays for its upkeep. Financial provision has allowed us to keep our properties and the church itself in good condition with a rolling programme of improvements and redecoration. The quinquennial inspection rarely raises any major concerns. Over the last few years, we have paid around £35,000 to the Parish Support Fund but have yet to decide on a figure for 2025.

As we look to appoint a new Associate Vicar, we will ensure, when setting a budget for 2025, to set aside money for new initiatives should it be needed.

We have a small discretionary fund at the Associate Vicar's disposal for pastoral needs and we have a long-standing commitment to three mission partners. In the past, the support we offer them has been substantially covered by planned individual giving but, of late, is covered more by the General Fund. In addition, we give regular donations to the CAP debt centre, Christ Church Primary School and other local Christian organisations such as [Insight](#), [Kingston Churches Action on Homelessness](#) (KCAH) and [Oxygen](#).

Much of the day-to-day routine of the finances is handled by the Parish Office with oversight from the St John's finance committee who advise the DCC. Our audited accounts are for the Parish as a whole including Christ Church and the CAP debt centre.

Our income from giving has gone down substantially in recent months as some key supporters have left or financial circumstances have changed. Historically, there has been strong financial support from the congregation but that pattern is less well established amongst newer members. We need to seek God's guidance as we assess our reduced income and cut our cloth accordingly.

Women's Ministry

Both St John's and Christ Church are in full support of women's ministry at every level. Our Vicar, Stephen Kuhrt has been an outspoken champion of women's ministry and was a campaigner for women bishops. Since 2008, four women clergy have served in the parish – two as Associate Vicars at St John's and two as training curates at Christ Church. Every position at both churches is fully open to both men and women.

Same-sex relationships

In terms of the Christian response to same-sex relationships, a diversity of views exist within St John's and Christ Church. This is handled entirely amicably and understanding of different perspectives has increased in recent times through several members of St John's participating in the 'Living in Love and Faith' course. In the meetings that took place before this profile was drawn up, issues involving sexuality were raised without rancour. This is obviously a complex issue which St John's and Christ Church are only just beginning to discuss in a way that is different to the stance of both churches through most of our history. But it is important for any applicant to know that St John's and Christ Church are both seeking to approach the issue afresh and with a greater openness than has characterised our churches in the past.

The Next Associate Vicar of St John's

We are therefore looking for someone who will:

- Work well with our Vicar, Stephen Kuhrt, the parish team, the DCC and members of St John's.
- Be a committed evangelical Anglican, working loyally within the structures of the Church of England and Diocese of Southwark.
- Be faithful in prayer and committed to seeking God's will both for the church and within their personal life.
- Be outward focused, dynamic, open to new ways of 'doing church', willing to take difficult decisions and provide strong leadership for St John's.
- Be a team player able to inspire, encourage, equip and deploy the spiritual gifts and ministries of the congregation.
- Be a faithful teacher and caring pastor committed to providing and building up biblical teaching, corporate prayer, worship, pastoral care and loving fellowship for an all-age church.
- Be committed to maintaining and developing a working relationship between St John's and Christ Church as well as the other local churches.
- Have a particular flair for evangelism and mission and be excited about inspiring and leading St John's in its calling to reach out to and serve the local community.



ST JOHN'S
NEW MALDEN