



# Ruxley Church

Ruxley Methodist † St Francis of Assisi, Ewell

## Church Profile and Statement of Needs



[www.ruxley-church.org.uk](http://www.ruxley-church.org.uk)

An inclusive worshipping community, united in Christ, serving others

# Contents



<b>Welcome from the Leadership Team .....</b>	<b>3</b>
<b>A true ecumenical partnership.....</b>	<b>3</b>
<b>One church family.....</b>	<b>4</b>
<b>Welcome from Bishop Andrew .....</b>	<b>5</b>
<b>Welcome from the Archdeacon .....</b>	<b>6</b>
<b>Epsom Deanery An overview by the Area Dean .....</b>	<b>7</b>
<b>Location.....</b>	<b>8</b>
<b>Come and join us .....</b>	<b>9</b>
<b>Mission Statement and Core Priorities.....</b>	<b>11</b>
<b>Developing the Spiritual Life of the church family .....</b>	<b>12</b>
<b>Safeguarding.....</b>	<b>14</b>
<b>Engaging with Children 0-11 and their families .....</b>	<b>15</b>
<b>Building Relationships with the Local Community.....</b>	<b>17</b>
<b>Appendix 1 Governance and Finance .....</b>	<b>22</b>
<b>Appendix 2 - Vicarage floor plans .....</b>	<b>25</b>

# Welcome from the Leadership Team

Ruxley Church is an inclusive, worshipping community, united in Christ and serving others. It is a true ecumenical partnership. With God at the centre of our ministry we are a welcoming, friendly family, who spreads the love of Jesus by:

- celebrating in worship, enabling people to explore and develop their faith
- ministering to children and young people, both within the church setting and in partnership with the local church school
- providing a variety of community activities which enable people to connect with us in different ways.

We continue to be excited about all that God has done over the years and is continuing to do here. We are particularly grateful for our modern building with its flexible use and beautiful worship area; for the music group which helps lead our worship, accompanying both traditional hymns and more modern songs; and for the young people who are part of our church family. 14 of these were recently confirmed and the majority of them have been coming (not always because their parents did) most of their lives and continue to worship once confirmed, a fact which we feel testifies to the quality of our lay leadership and worship.



## A true ecumenical partnership



The new incumbent will work in partnership alongside Rev. Emma Cusack. Emma has been Methodist Minister at Ruxley since 2016. She has been a Circuit local preachers' tutor since 2007, as well as a Mentor to Probationer Ministers over the last thirteen years, supervising candidates exploring a vocation to ordained ministry. Emma is a passionate preacher, loves singing and has our members' pastoral care at heart. Emma shares her full-time ministry between Ruxley and neighbouring Stoneleigh Methodist Church.

**An inclusive worshipping community, united in Christ, serving others**

# One church family

## *How did it all start?*

The congregation of St Francis Church and Ruxley Methodist Church were officially united as a single congregation ecumenical partnership in January 2002, although we have shared all our services since August 2000. It had become clear that the Methodist Church building in which we were meeting had come to the end of its life and so we started to look at the possibility of building a new Church Centre. This was completed in 2013 and in the June of that year we moved to our new home.

## *An ecumenical church*

Ruxley Church drew its original membership from both the Anglican and Methodist traditions but now gathers as one worshipping community. The incumbent and Methodist Minister work in partnership to lead worship, discern the direction God is calling us to serve in and provide pastoral care across the whole Ruxley church family. Our joint church roll comprises 102 members, of which 83 are adults and 19 are young people. We have 59 members on the Electoral Roll.

We enjoy good relationships with both parent denominational bodies, as a parish church within the archdeaconry of Dorking, and as a member church of the Wimbledon Circuit. Our Methodist Minister shares her ministerial oversight of Ruxley Church with Stoneleigh Methodist Church.

*The Bishop of Guildford and  
Emma, our Methodist Minister  
Ruxley Confirmation Service, June 2023*



It is usual for an incumbent in an LEP to be granted a 'recognised and regarded' status by the Methodist Church. This is not obligatory but enables the incumbent to participate in Methodist meetings where decisions that might affect Ruxley could be made; and to become more *au fait* with Methodist ways by leading worship at one of our sister Methodist churches within the Circuit on an occasional basis.

**An inclusive worshipping community, united in Christ, serving others**



# Welcome from Bishop Andrew



The Diocese of Guildford is a warm and friendly place to be, with a strong cohort of gifted and passionate laity and clergy, some excellent church schools, and plenty of beautiful countryside to enjoy on a day off!

Our vision as a diocese is to see lives and communities transformed through the love of Christ; and, to that end, we have recently refreshed our [Diocesan Strategy Transforming Church, Transforming Lives](#), with a particular focus on Growing Disciples, Growing Diversity and Growing Community. Although our congregations are generally rather larger than average, we are all too conscious that we are only reaching a tiny proportion of our parish populations, and are particularly keen to become more effective in passing on the baton of faith to younger generations.

Our team of Mission Enablers are committed to working with every parish in fleshing out that vision in an appropriate way, going with the grain of the church's history and tradition, whilst also suggesting new ways to 'proclaim the gospel afresh in each generation'. The pandemic, while presenting many challenges, has helped to forge new relationships between many of our churches, creating a spirit of 'us and us' more than 'them and us', and opening up new approaches to partnership and inter-church collaboration.

If you share our vision for transformation, and have a track record in growing disciples, growing diversity and growing community, we'd love to hear from you!



*Rt Revd Andrew Watson  
Bishop of Guildford*

# Welcome from the Archdeacon



There is so much to rejoice over in the Local Ecumenical Project that makes up Ruxley Church with a wonderfully diverse congregation that is committed to demonstrating the love of Christ throughout their local community. Some of the recent celebrations include: a renewed relationship and focus of ministry at Riverview School, the Together@10 inter-generational worship, a growth in number and depth of discipleship of the young people, 14 candidates recently confirmed and other steady signs of growth.

I sense that there is very real potential for the new House for Duty Incumbent to build on the strengths of relationship that the church community has with its local community. It is vital that the person appointed has experience of and is committed to working with a church school and is eager to develop ministry to young people and families more widely. The successful candidate should have a strong pastoral heart, be committed to working collaboratively with the Methodist Minister and Leadership Team in providing clear leadership in areas which include: dealing with difference, empowering a team ethos, and envisioning others.

This appointment is perfect timing for receiving resource and support from the wider diocese. 2021 marked the launch of our new Parish Needs Process. This marks a brand-new way of working whereby the diocese will seek to walk alongside each parish to help them with vision and whatever needs they might have arising out of this.

I am very enthusiastic about the opportunity that this post offers to build on the excellent work of the previous House for Duty Incumbent. For the person that God calls, there is so much to offer here: the warmth of a great church family and wider community; the opportunity of sharing in leadership in a parish, deanery and diocese which offers considerable support and resources; the exciting challenge of discerning with this community what God is doing and how we might join in; and the privilege of living and working in this part of the country with so many opportunities for clergy and families.

If you'd value an informal conversation about this post, please do not hesitate to be in touch with me at [archdeacon.dorking@cofeguildford.org.uk](mailto:archdeacon.dorking@cofeguildford.org.uk), so that we can arrange a time for us to speak.

*Venerable Martin Breadmore  
Archdeacon of Dorking & Acting Archdeacon of Surrey*

# Epsom Deanery

## An overview by the Area Dean

Epsom Deanery is fantastic, but I'm biased!

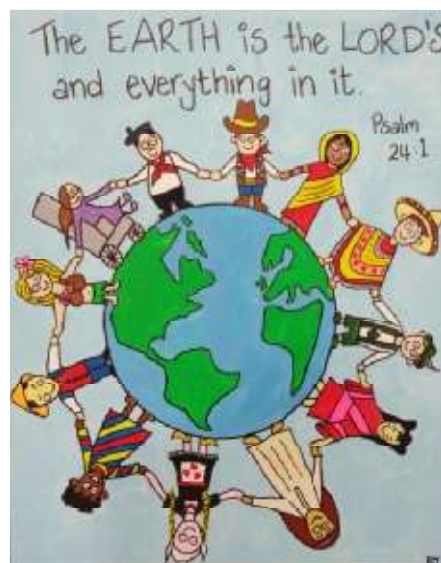
Seriously there is good fellowship and cooperation across our 13 benefices, demonstrated by increased engagement at both the Incumbents and full Chapter meetings as well as Synod.

We try to ensure that the purpose of each meeting is clear and identify current relevant topics that are important for everyone. We have recently gone through the Parish Needs Process, an initiative to ensure each benefice develops a comprehensive Church Development Plan. This has enabled us to identify synergies between us and opportunities for even more collaborative working.

Mentoring is offered to new clergy, and we operate several clusters for deeper fellowship and mutual support. There is an annual Incumbents retreat for 24 hours as well as a Quiet Day for all the Chapter. We are concerned for one another's wellbeing believing that you cannot nurture others unless you nurture yourself. We would be delighted to welcome a new colleague and look forward to sharing ministry with you.

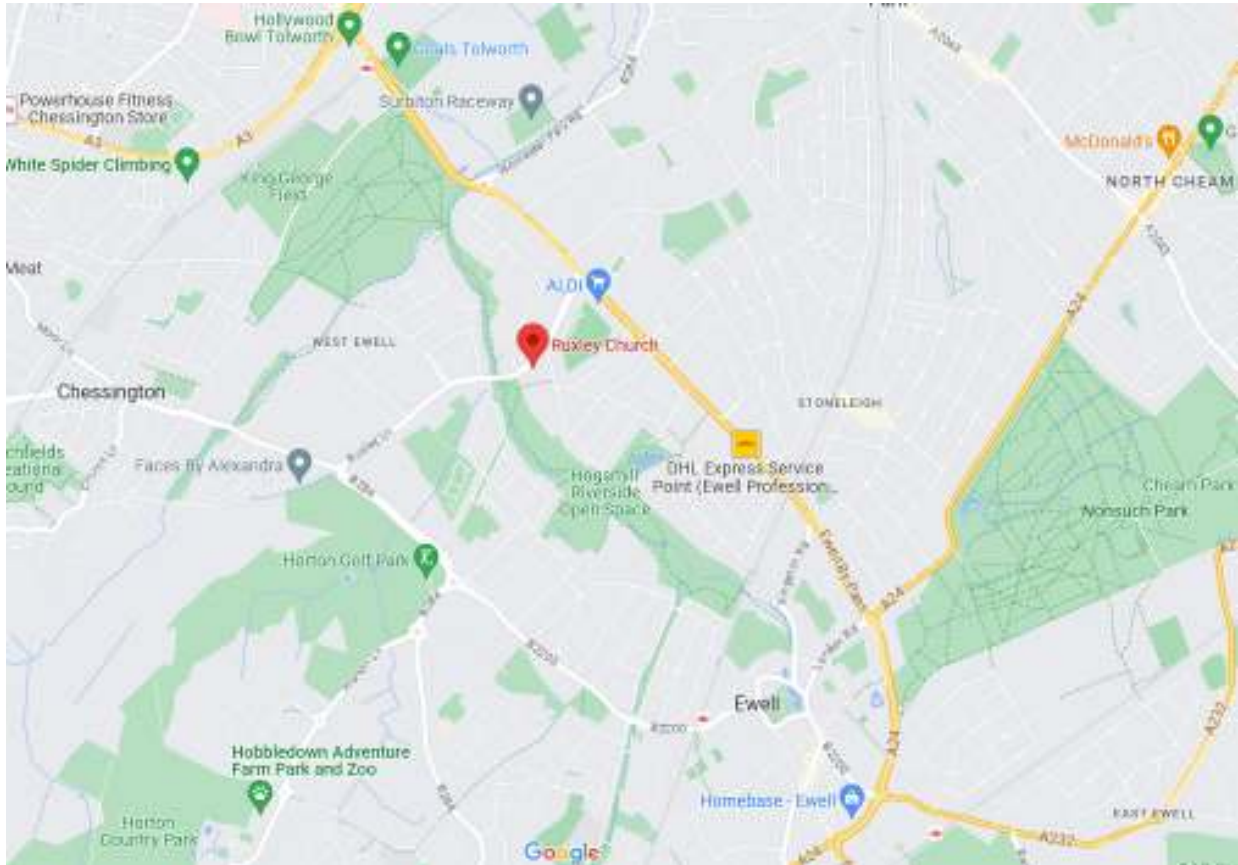


*Revd. Rosemary Donovan*



# Location

West Ewell is within the M25 at the north-eastern edge of Surrey, 17 miles from the centre of London. We are in Epsom Deanery in the Diocese of Guildford and one of five churches forming the Methodist Wimbledon Circuit in the London District.



The area is socially and economically diverse, with pockets of affluence interspersed with areas of social housing. The population is continuing to grow, with significant building activity going on in the local area. There is a mix of owner-occupied and socially-rented properties within the parish boundary.

We benefit from areas of countryside and open space nearby but the largely urban nature of the area, together with its lack of a central hub, makes it challenging in terms of community identity.

There are two primary schools in the parish, one of which is a church school linked with Ruxley Church. There is also a secondary school. A number of small local shops serve the area. There is a large Sainsbury's on the outskirts of Epsom Town Centre, about 4 miles away, with more extensive shopping centres such as Kingston further afield accessible by bus. There are a variety of restaurants and coffee shops in and around the area as well as doctor and dental surgeries.



# Come and join us

This is a two days per week plus Sunday, House for Duty position to be the Anglican Incumbent at Ruxley Church, working in partnership with the Methodist Minister, who is full-time across two Methodist churches.

## We are seeking someone who

- nurtures their spiritual life and enjoys supporting others in doing the same
- is able to engage people, build positive relationships and nurture discipleship
- is creative and visionary, can offer ideas about how Ruxley's congregation and resources can do God's work most effectively, and provide the necessary leadership
- is able to motivate people and to work collaboratively, flexibly and joyfully; and has a sense of humour
- will offer our members God's challenge, care and comfort as appropriate to each.



**An inclusive worshipping community, united in Christ, serving others**

We are a diverse community, seeking someone who

- will enrich our spirituality and develop our prayer life, individually and as a church, and is willing to continue our tradition of using a variety of orders for our eucharistic services
- will be comfortable working across all ages, genders and ethnicities, helping us to identify strengths and talents to be used for the glory of God
- has a truly ecumenical mindset who will promote our ecumenical ethos
- in partnership with the Methodist Minister will provide pastoral care across the whole church family
- is willing and able to work in partnership with the Leadership Team
- together with the Methodist Minister will encourage and inspire us to live out our core priorities with an emphasis on
  - developing our relationships with and ministry to young people and their families, including our *Fish Club* and *Catalyst* groups
  - continuing to develop our relationship with Riverview CofE Primary and Nursery School, as well as Toddler and Pre-school Groups
  - building on our outreach to the wider community
- brings energy and enthusiasm to the role.



#### Feedback from our recent Circuit Review

- 'I value Ruxley Church's community and how welcoming everyone in the church is'
- 'It's a special place - like a family'

# Mission Statement and Core Priorities

Back in 2018 we gathered for a Vision Day with the primary aim of seeking to discern God's will for our church. As a whole church family, we started to identify areas that God was prompting us to develop, as well as celebrating what we do well, followed up by a session facilitated by the Diocesan Mission Advisor.

The Covid pandemic gave the Leadership Team an opportunity to reflect and pray after which they set about developing a Mission Statement and Mission Action Plan.

The Ruxley community prayerfully adopted the new Mission Statement:

## **An inclusive worshipping community, united in Christ, serving others**

We then set about prioritising three core areas to focus on and develop. These form the basis of our Mission Action Plan, and it is good to see that these fit in with the areas identified as a priority for the Diocese of Guildford:

- a. Developing the spiritual life of the church family
- b. Engaging with children 0-11 children and their families
- c. Building relationships with the local community

Our core priorities are reviewed yearly. In September we revisited these as part of the Methodist Wimbledon Circuit Review, during which we garnered views from wider members of the community as well as church members.



# Developing the Spiritual Life of the church family

## Worship

### *Sundays*

10.00am Morning Service

6.30pm Twice-monthly Evening Service

### *Tuesdays*

7.45pm Prayer Group

### *Thursdays*

9.30am Zoom Morning Prayer



Average Sunday attendance is currently in the region of 50-70 - including up to 19 young people for the main morning services - and up to 18 in the evening. Special services and festivals attract more, such as at our International Service in June.

A significant benefit of being a Local Ecumenical Partnership (LEP) is being able to enjoy a broad spectrum of styles of worship. We readily draw on the resources of Anglican or Methodist tradition or both, as well as other liturgies such as those from the Iona Community. The main morning service is usually eucharistic and all are welcome at the Lord's table. Communion is offered in two forms, reflecting our two traditions: a chalice of alcoholic wine, and small glasses of non-alcoholic wine. All morning services are projected with large-print orders of service available. There is a built-in induction loop for the hearing impaired.

Our informal Together @ 10 service is held once a month. A short act of worship is followed by activities, planned by our Together @ 10 Team. Each group offers an opportunity to be creative with our hands, to pray or to discuss.

Evening services are more intimate and informal and encompasses monthly evening communion, meditative services, and corporate bible study.

Everything and everyone is covered by prayer. The Tuesday Evening Prayer Group meets in the Chapel and there is a very active prayer chain. Thursday Morning Prayer on Zoom has encouraged others to participate who may not otherwise be able to join in person.



## Together@10

Together @ 10 is our popular monthly family service where we worship, pray, create, and share fellowship in a relaxed environment, working to provide something for everyone. Our older young people regularly take part and lead in the craft and activity sessions to support the theme of the service.



## Small Groups

Almost half the congregation now meet in twice-monthly groups for Bible study and fellowship. During Lent, all groups are encouraged to use the same material linked in with Sunday preaching themes.

## The Ministry Team

The incumbent and Emma are assisted by six accredited **Leaders of Worship**, three of whom are also accredited **Occasional Preachers**, as well as a team of Team Coordinators, Vestry Assistants, Intercessors, Readers, Chalice Assistants, Worship Team Assistants, Welcomers and AV operators on a rota basis.

## Music



We are blessed to have **Emmaus**, an accomplished instrumental group of musicians who accompany the morning services. They have a large repertoire of hymns and songs, able to draw on a range of traditional and modern hymnody, including from the Lutheran and Catholic traditions.

There is also an informal Ukulele Band that meets weekly.



## Confirmation and Occasional Offices

2024

Baptisms: 6      Confirmations: 14 (2023)      Weddings: 2      Funerals: 4

Baptisms are conducted as part of the morning service using a form of liturgy that has been created to reflect the roots of both denominations. Funeral services are conducted by ministers of either denomination dependent on the choice of the family. We have few requests for weddings, possibly due to the modern style of the building.

New members are baptised and confirmed into joint denominational membership. We were overjoyed to welcome 14 candidates into membership at an amazing confirmation service in June 2023 officiated by both Bishop Andrew and Rev. Emma Cusack.



## Safeguarding

All are welcome here. Ruxley adheres to Diocesan Safeguarding Policy and our Safeguarding Team of three ensure that everyone at Ruxley is committed to promoting a safe and supportive environment for all.



# Engaging with Children 0-11 and their families

## Baby and Toddler Group and Pre-school

This is an area of ministry that we are keen to develop, particularly during festival times.

Baby and Toddler Group has been running every Wednesday during term time for the last three years. They provide a safe space for parents / carers and their children from birth to 3 years.

There has been a Pre-school at Ruxley since the Methodist Church first opened in the 1960s. This has gone from strength to strength and this year gained their second successive 'Outstanding' rating by OFSTED. They admit children from two and a half up to school age and their capacity has just expanded with a waiting list.

## Fish Club and Catalyst

Our groups regularly host up to 19 young people aged from 2 to 22.

*Fish Club* meets every Sunday during the main worship time. A lot of activity is built into this time and the children actively enjoy it, thanks to their dedicated leaders.

We have recently linked with the St Paul's Youth Minster through *Raising Generations* to support us in developing our *Catalyst* ministry.

Some of these older young people assist with leading the younger groups, having recently completed leadership training alongside the adult leaders.

Our ministry to children, youth and their families has always been a priority. Our hope is that our new incumbent will not only work with our dedicated team of volunteers who run group sessions, but also work directly with our young people.



Young people's Easter Garden



## Riverview School

There are three schools within the parish boundary, two primary schools and one secondary school. Our closest link is [Riverview \(C of E\) Primary School and Nursery](#) which was rated good in a recent OFSTED inspection. Currently children come to the church for special services such as their Harvest celebration and the end of year service for Gold Class (Year 6 leavers), and to enhance their understanding of notable events in the church year. They also, on occasions, visit groups which meet at Ruxley, such as the Tuesday Friendship Club.



The ECC and Headteacher are keen to develop links between the church and school. The new incumbent would be a member of the Full Governing Body and one of the committees (currently the Resources Committee) alongside the two currently-serving governors appointed by the ECC. It is hoped that the incumbent would continue the tradition of taking some assemblies as well as liaising with the Headteacher over services at Ruxley so that Riverview's vision, based on John 10:10, is brought to life by living out values of Hope, Trust, Love, Forgiveness and Respect.



Preparing for the Riverview Harvest Service at Ruxley Church



# Building Relationships with the Local Community

## Friendship Club

Tuesday Friendship Club have met fortnightly for many years, mainly attended by the over 60s age group. They enjoy a varied programme including demonstrations, talks, outings, as well as visits from Riverview School students, and always with a warm welcome and lots of laughter.



## Coffee, Chat and Craft

A recently-formed group aimed to appeal to people who enjoy craft-based activities. These support specific church services/festivals, providing visual displays to enhance our worship, examples of which can be seen in this profile.

## Community Choir

Although this is a fairly recent initiative, it has proved popular with people from both the neighbourhood and from the church. The focus is on singing for enjoyment, although the group prepares pieces for special services, such as Easter, Harvest and Christmas. The choir is open to all, whatever their musical ability, and currently comprises about 15 members, some of whom are not regular church members.

## Thursday Coffee Morning

This is now in its 12<sup>th</sup> year, and possibly our most successful weekly event to-date. Up to 30 people drawn from the church and local community meet for coffee, cake and conversation. It continues to be a springboard for some to become regular worshippers. From their profits, the Coffee Morning Team also make regular donations to various local charities.



### *Feedback from our recent Circuit Review*

*'I introduced my father to the coffee morning, which he loved. After he died I was asked to come along, which meant a lot to me. He made many friends and now I consider them to be my friends too.'*

## Men's Group

Men's Group meets monthly in a local pub to enjoy a drink and dinner, providing a point (or a pint!) of fellowship for members and non-members alike.

## Garden of Reflection

The final areas of our Memorial Project were dedicated in May 2021 following a whole-community major fund-raising effort in 2018. The Garden provides a beautiful space for anyone to sit and enjoy, with a variety of plants providing all year-round interest, the maintenance of which has led to the formation of a regular



Gardening Group. There are three wooden pillars on which memorial plaques are installed, a facility available to anyone in the area, as well as church members. It encompasses a Labyrinth for contemplative walking prayer, and the 'Peace Stone'. We have found that the garden is used by many different local people, including children waiting at the bus stop!

## Other links

### Appleby House

Our most recent venture with a local residential home has built on the relationship begun earlier this year when one of our members moved in. The hymn singing - including a short talk from the minister - and ukulele singalongs have proved very popular with residents and both groups have been invited back.

### Charitable giving

Our church regularly and generously supports **charities** both in the UK and abroad, through donations and social events. Recent beneficiaries have included Christian Aid, Bishop of Guildford's Foundation, Methodist Homes, Children's Society, Action for Children and at Harvest, All We Can and Foodbank.



Ruxley Church is one of the venues for **Good Company (Foodbank)**. The centre provides much needed food and support for many people in the area. A group of church members work alongside volunteers to provide regular support to this vital enterprise.

Our Methodist Minister Emma has been actively involved in fund-raising to support **Sudbury Primary and Junior High School** in Ghana since 2014. The school has been adopted by Ruxley as the Minister's Charitable Project and funds are raised annually to support them.



A **Saengsu Korean Church** congregation meets at Ruxley on Sunday afternoons for worship and a communal meal. We occasionally share in worship and fun day activities together.



## Church Centre

One of the newest in the Diocese of Guildford, with a visually-striking tower designed to symbolise Ruxley's vision to be a beacon of God's love to the local community. This purpose-built, two-storey building was dedicated to the glory of God on 25<sup>th</sup> June 2013. All halls and rooms can be easily accessed by wheelchair users, including the upper floor which is served by a lift.



The first floor Worship Hall can accommodate 180–200 people, with a lobby area which can be used for additional seating or separately as a meeting space. The vestry, sacristy, upstairs toilets and a small kitchen are located off this lobby area. The sanctuary is located within the apex of the main space, furnished with a beautifully-crafted altar table, lectern and credence table with two chairs.

The Chapel on the ground floor is a smaller, more intimate area of the church, used for prayers when the building is open.

The Church Office is located adjacent to the Chapel on the ground floor, as are additional toilets, including a separate disabled toilet.



Our three Halls and the Coffee Lounge are extensively used throughout the week by a range of community groups, including Pre-School. The Main Hall is a multi-purpose and flexible space that can be sub-divided into two, each with its own audio-visual facilities including a hearing loop. The Small Hall has a hearing loop as well as its own child-friendly washing facilities and toilets. The Meeting Room is the smallest of the three spaces, providing facilities for smaller classes and activities.





## Minister's Residence

Built in 2008 to 'green book' specification as the first phase of the church redevelopment, this spacious, four-bedroomed detached house has an integral garage and gardens to side and rear. The kitchen and bathrooms were completely refurbished in 2021. The house is situated in Ruxley Lane, at the junction with Scotts Farm Road, on the site of the original Ruxley Methodist Church. The Church Centre is three minutes' walk away and Riverview School another four minutes beyond. The property is regularly inspected with necessary repairs and redecoration undertaken as required.



## Church Administrator



Jenny Meineck has been employed as Church Administrator since April 2021, forming a vital link between visitors, church members and hirers of the premises. She is a long-standing member of the church family and convenor of the Premises Team.



Coffee and Craft Group's beautiful creation for Christmas 2023

# Appendix 1 Governance and Finance

## Finance

Resources were combined in 2004 to form a single set of unified church accounts. A rolling five-year forecast is prepared to assist in planning and improving our general finances. A collection is taken at the main service each Sunday via the plate and a contactless card machine. Members are encouraged to join the planned giving scheme to donate by weekly envelope or standing order and to Gift Aid the money where possible.

As established by our constitution as an LEP, we undertake to meet the ministry needs of the combined congregation by paying parish share and contribution to Methodist assessment.

Ruxley employs a Church Administrator and a premises cleaner.

## Highlights from 2024 AGM Treasurers Report

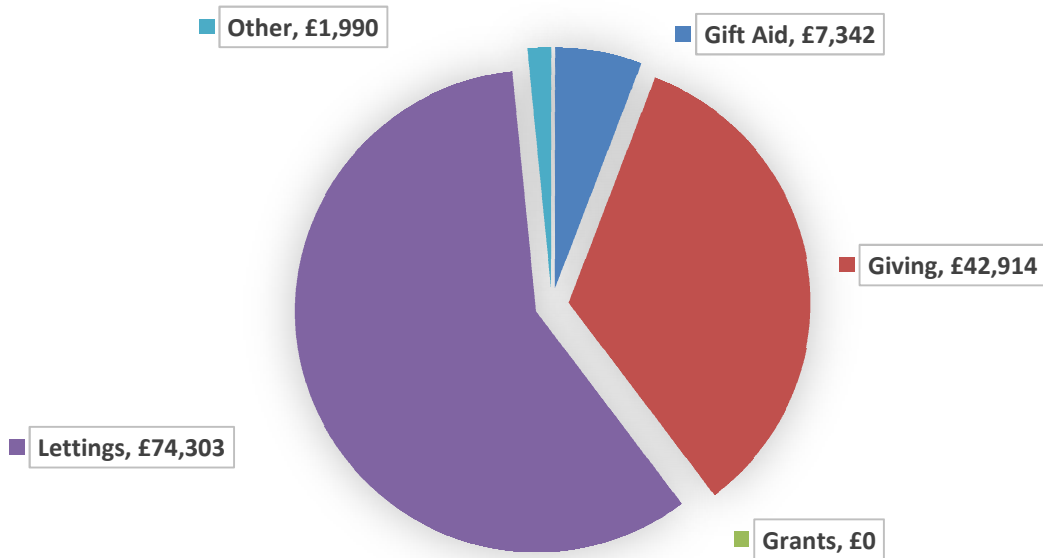
- We currently have £234,000 in unrestricted and restricted funds.
- Hall hire was up by £2,000 to £74,303, the highest since records began!
- Due to the way large bills were being paid in this year we ended up with a deficit of £9,484.
- £30,712.31 outstanding Escrow monies regarding the new building were received and placed in a restricted 'Building Rectification' fund.
- £9,873 was given to various charities, a significant increase.

## Coming up...

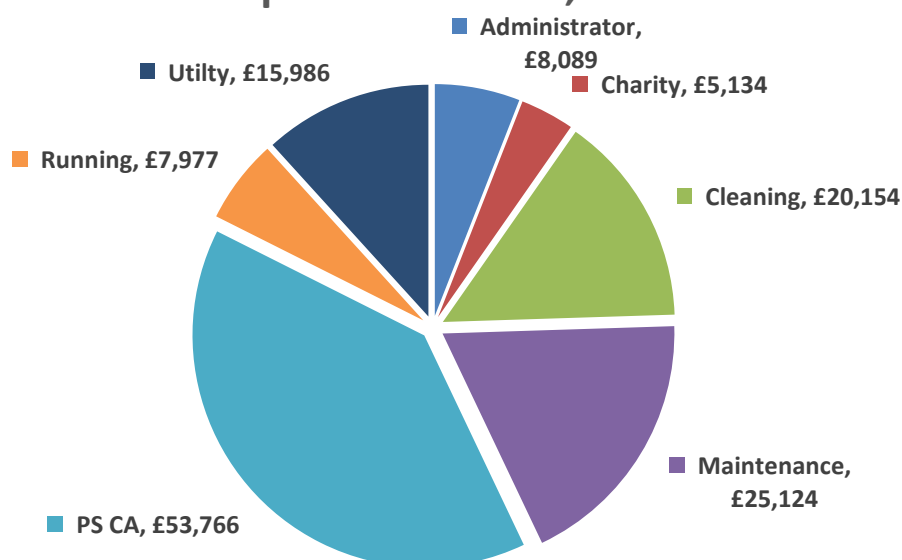
- We are shortly starting a stewardship campaign.
- Following an energy audit funded by the Wimbledon Circuit we plan to replace some of our lighting with LEDs which have lower associated running costs.
- Major expenditure planned for this year includes paving and car park works, new notice boards, replacement projectors, solar panels and battery.

## 2024 Financial Summary

### General Fund Income £126,747



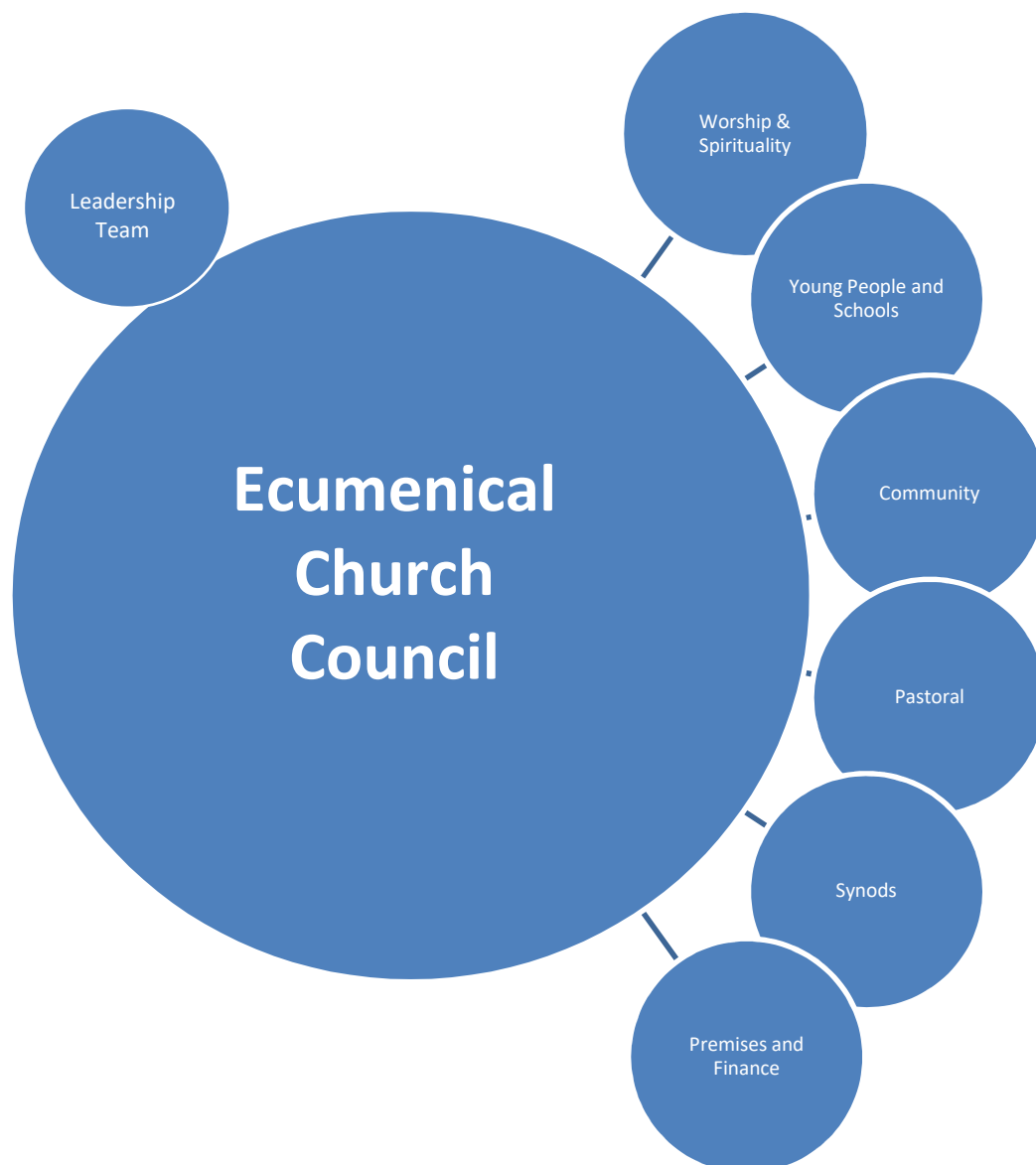
### General Fund Expenditure £136,229



## Governance

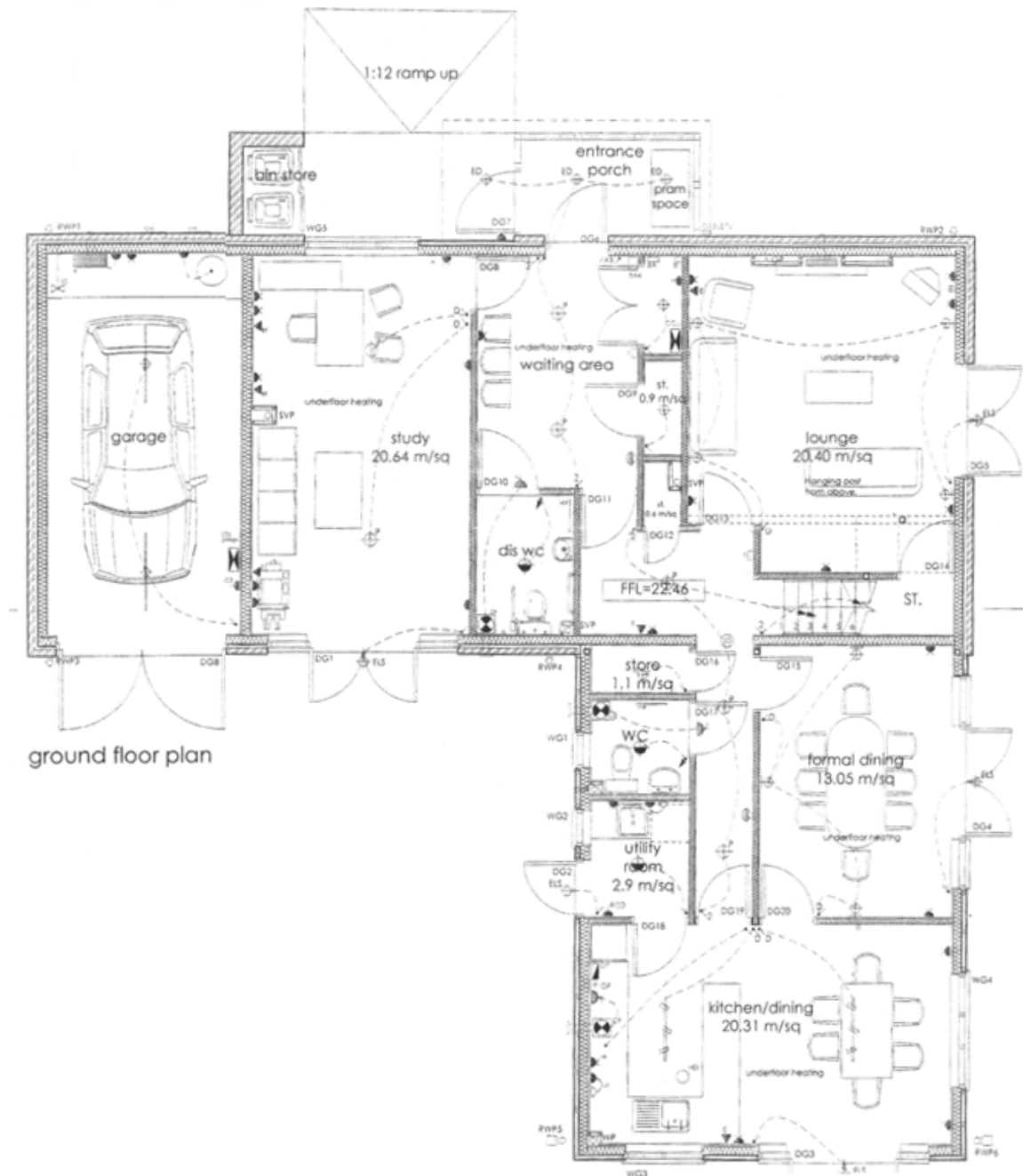
The Ecumenical Church Council (ECC) meets about five times a year with the Leadership Team meeting in the intervening months.

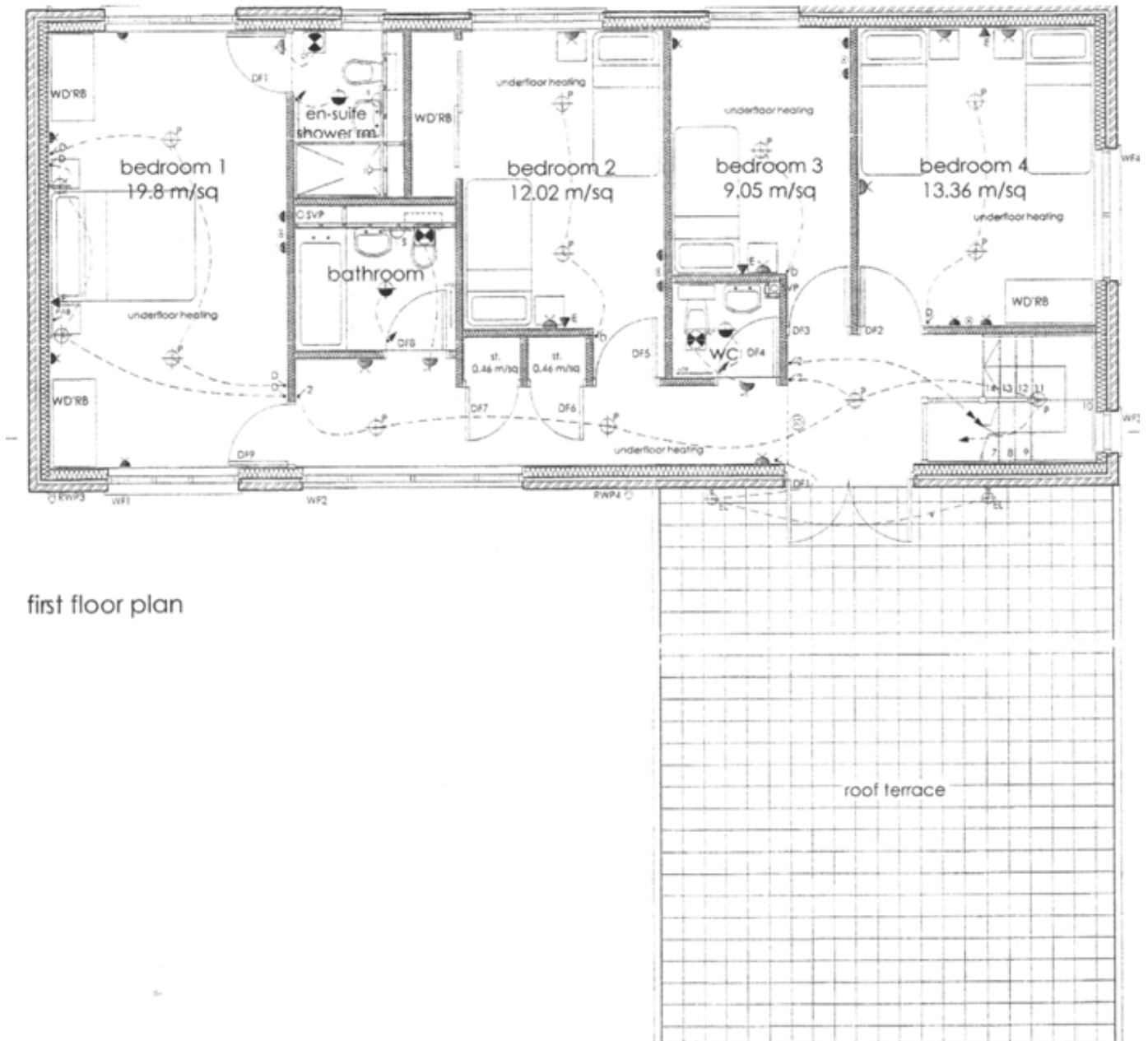
Subgroups meet on a regular basis to discuss various aspects of church life and their facilitators feed back to the ECC.





## Appendix 2 - Vicarage floor plans





first floor plan

# Ruxley Church

## Ruxley Lane, Ewell

### KT19 0AF

*Methodist Minister:* Rev. Emma Cusack  
[methodist.minister@ruxley-church.org.uk](mailto:methodist.minister@ruxley-church.org.uk)

*Churchwarden:* Paulette Withycombe  
[church.wardens@ruxley-church.org.uk](mailto:church.wardens@ruxley-church.org.uk)

*Senior Steward:* Sue Grasby  
[steward1@ruxley-church.org.uk](mailto:steward1@ruxley-church.org.uk)

*Church Administrator:* Jenny Meineck  
020 8394 1081 [office@ruxley-church.org.uk](mailto:office@ruxley-church.org.uk)

*Safeguarding Officer:* Judy Quaife  
[safeguarding@ruxley-church.org.uk](mailto:safeguarding@ruxley-church.org.uk)

See our weekly news sheet  
and our church magazine *Ruxley Star*  
or visit our website and Facebook page



[www.ruxley-church.org.uk](http://www.ruxley-church.org.uk)