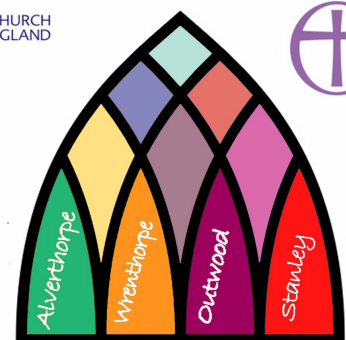


Your Insight into the North Wakefield Benefice

Discover more about our Parishes and the Vicar we're looking for



THE CHURCH
OF ENGLAND



North Wakefield Benefice

North Wakefield Benefice

North Wakefield Benefice was set-up in early 2020. We are a benefice of four churches across distinct communities in North Wakefield, West Yorkshire. A benefice of churches that have a strong desire to serve our communities through the living of Christ's teaching and the good news of the Gospels.

We may be in the 21st century but Christ is still if not more relevant today than ever, and it is our desire to bring an open and welcoming vision for the future of Alverthorpe, Outwood, Stanley and Wrenthorpe through cooperation, generosity, inclusion and openness.

As we begin a new phase in our churches it is our desire to embrace tradition but be open to the needs of today but most of all to keep Jesus Christ at the heart of all we do.



Our new Vicar should be

A spiritual leader, who is filled with the Holy Spirit and will help us to develop our faith and lead us in mission and outreach into our local communities . Although we are comfortable with our individual styles of worship, we are open to changes that enhance our fellowship.

- Keen to be part of the continued development and implementation of our vision for the North Wakefield Benefice.
- A real team player, someone who along with the associate priest and the leadership team of the benefice can help us continue to build our United Benefice, allowing the Churches to develop together whilst keeping their own individual identities.
- Somebody who recognises that the whole people of God have a part to play in the life and ministry of their church and across the Benefice.
- Understanding of the younger members of our community and have the ability to help us develop our youth, young family ministry and school links.
- Someone who can appreciate and feel comfortable in different styles of worship.
- Someone who has a passion for community outreach.
- Somebody who is approachable, adaptable, has a genuine sense of fun and is hard working and careful to protect time off.
- Is sympathetic to the history and tradition of our churches

What we can do for you? We will support you with respect, love, care and prayer and welcome all that you will bring to us.

External Links

The incoming Vicar would have the opportunity to form part of the chaplaincy team which supports Wakefield Hospice which lies in St.Peter's Parish in Stanley.

We have links with Churches Together in Wakefield and also Vision Wakefield which brings together church leaders who seek to improve the welfare of the city, practically as well as prayerfully.



The Diocese of Leeds

In this Diocese, which was formed in 2014, we are working with three core objectives:

- **Confident Christians:** Encouraging personal spiritual renewal with the aim of producing clergy and laity who are confident in God and in the Gospel.
- **Growing Churches:** Numerically, spiritually and in their mission to the wider world.
- **Changing communities:** For the better, through our partnership with other churches and faith communities, as well as government and third sector agencies.

The Diocese came into being at Easter 2014 following the dissolution of the dioceses of Bradford, Ripon & Leeds and Wakefield. This followed a three-year process of debate and consultation driven by the Dioceses Commission. Background papers to the reorganisation process can be read at www.wyadtransformation.org

The Diocese comprises five Episcopal Areas, each coterminous with an Archdeaconry. This now one of the largest dioceses in the country and its creation is unprecedented in the history of the Church of England. It covers an area of around 2,425 square miles, and a population of around 2,642,400 people.

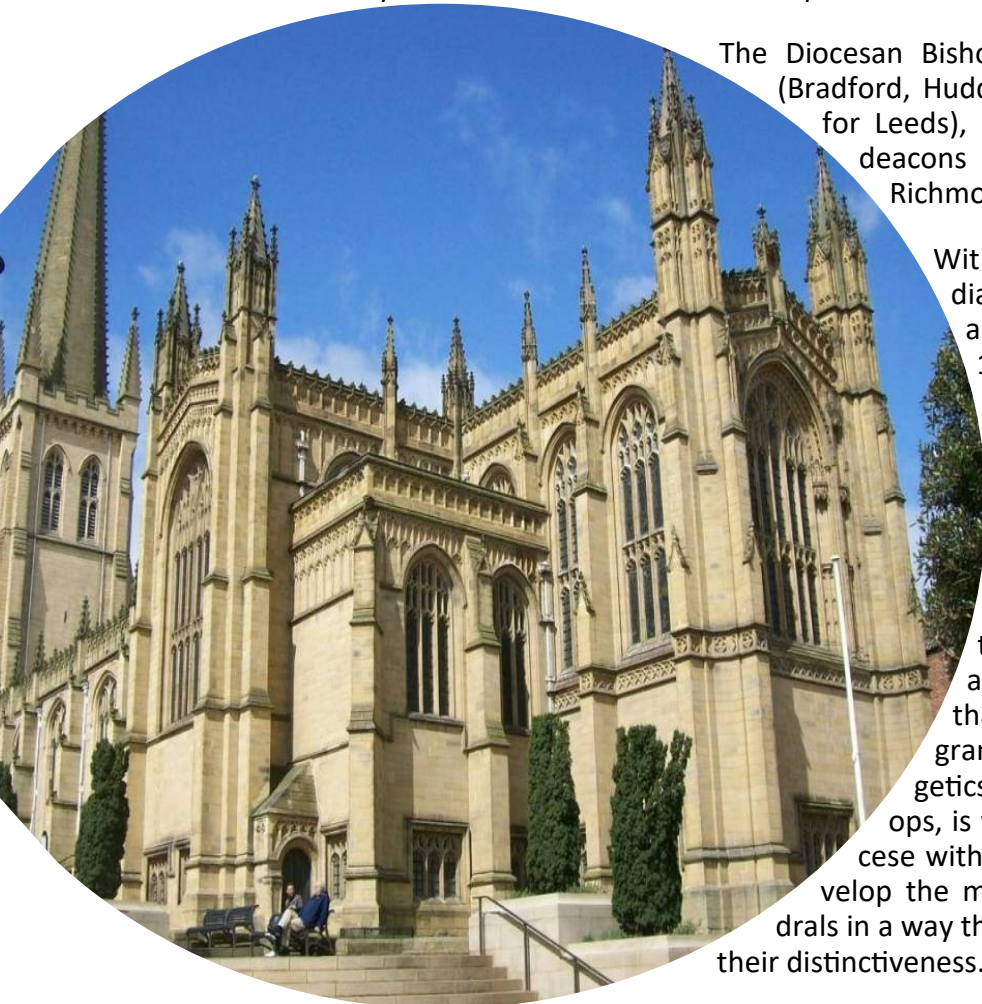
The Diocese comprises major cities (Bradford, Leeds and Wakefield), large industrial post-industrial towns (Halifax, Huddersfield, Dewsbury and Barnsley), market towns (Harrogate, Skipton, Ripon, Richmond and Wetherby), and deeply rural areas (the Dales). The whole of life is here, along with all the richness, diversity and complexities of a changing world.

The Diocese is dissected by major motorways (M1, A1M, M62) and major trunk roads (such as the A650, A59), making road communications good. Access to other forms of transport is also good, with rail links to London and many Northern towns and several airports within easy reach.

The Diocesan Bishop is assisted by five Area Bishops (Bradford, Huddersfield, Kirkstall (with responsibility for Leeds), Ripon and Wakefield) and five archdeacons (Bradford, Halifax, Leeds, Pontefract, Richmond & Craven).

Within the Diocese, there are 323 stipendiary clergy, 165 self-supporting clergy and 398 clergy with PtO with 408 LLMs, 125 lay pastoral and 52 chaplains in 656 churches, with 256 church schools.

The Diocese is unique in having three cathedrals. Bradford, Ripon and Wakefield, and over the past year the cathedrals have begun to work together on the key diocesan services as well as developing three strands that they will offer to the diocese — pilgrimage, civic engagement and apologetics. This new diocese, led by the bishops, is working out how best to create a diocese with more than one cathedral, and to develop the ministry and outreach of these cathedrals in a way that secures their future and recognises their distinctiveness.

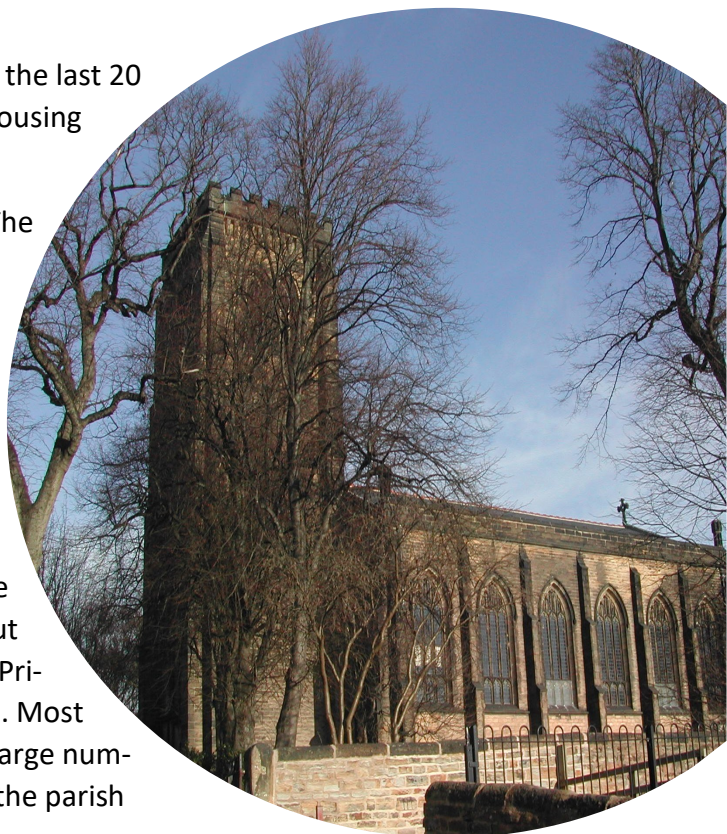


About the Parishes

The geographical position of all four parishes are within the City of Wakefield, but near to the M1/M62 commuter routes to Leeds and beyond.

This has brought significant change to the parishes within the last 20 years, old and new industries exist side by side, and the housing stock has been considerably added to.

Historically the communities were small mining villages. The industry was the backbone of the villages and families lived, worked, were educated, married and died in the areas. But all have expanded in the last three decades.



Alverthorpe

The population of the parish has risen from 4500 to over 6500 in 20 years. Further housing infill is in progress. There are approximately 2600 homes in the parish of which about one third are council owned, and 3 schools, St Paul's CofE Primary, Flanshaw Primary and Silcoates Independent School. Most of the new private housing is owned by young families. A large number of elderly and disabled people currently reside within the parish boundary.



Wrenthorpe

The parish of Wrenthorpe comprises the larger suburb village of Wrenthorpe, the smaller village of Kirkhamgate and the hamlets of Carr Gate and Brandy Carr.

The villages of Wrenthorpe and Kirkhamgate still retain a village feel, both having thriving Community Associations. The local Primary schools have good reputations and are usually oversubscribed.

There are two Methodist churches and a Well church with whom we work together and have good relations.

With a population in excess of 7000 we have a post office, chemist, takeaways, 3 pubs, a club, a licensed restaurant, hairdressers, a car repair garage, several general stores and a Tesco Express.



Outwood

St. Mary Magdalene church was built in 1858 in the centre of the village which also has a Methodist Chapel. There is also our Church Institute nearby which is used by many community groups including, Playgroup, Mini Monsters, Dance Class, Outwood Singers, Slimming Group, Wives Group, Community Drop-in and uniformed organisations. It also hosts the church's annual Spring & Autumn Fairs.

There are numerous business premises in the village including supermarkets, independent shops, vehicle repair, pubs, funeral director, restaurants and takeaways, two care homes, a doctor's surgery, two pharmacies and a section of the Unit 41 industrial estate.

There are 3 primary schools, Ledger Lane, Rooks Nest, Lofthouse Gate and one senior school, Outwood Grange Academy, which has a sixth form.

Currently there is extensive housing development on going in the North and East of Wakefield



Stanley

The parish of St. Peter's, Stanley is historically a group of communities, which have amalgamated into one village, but still retain their local identities, e.g. Bottomboat, Ferry Lane, Lee Moor.

The churches were a central part of the community. Two Methodist Chapels, together with the Anglican parish church of St. Peter's, were the spiritual homes of the community. One Methodist chapel on Ferry Lane closed in the 1980's and the remaining Methodist chapel on Mount Road closed in 2023. A Zion church community, established in 1876, exists on Aberford Road.

There are a number of business premises in the village including shops, hairdressers, children's day care, vehicle repair, pubs, cafes, timber fencing, funeral director and building product manufacturers.

There are three schools in Stanley; St. Peters Primary School, on Lake Lock Road; Stanley Grove Primary School on Aberford Road, and Kingsland School catering for children with special needs on Aberford Road.

Currently there is an extensive house building development taking place across various areas of North and East Wakefield, Stanley being one of them. The City Fields development is a consortium of a number of house builders and is designed to provide a significant number of houses of various grades, as well as education, health and retail facilities.



The Churches



St Paul's

We would describe worship at St. Paul's as in the middle of the Anglican tradition. We enjoy a mixture of styles of worship and try to maintain a relaxed atmosphere with use made of projection and sound systems. The uniformed groups join us for a monthly Sunday service which is mostly on the first Sunday of the month when the service is morning worship. The rest of the monthly Sunday services are Holy Communion. There is a weekly holy communion at 11:00 on Wednesdays.

Alverthorpe



St Mary Magdalene

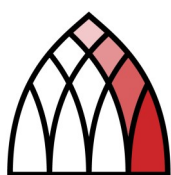
St. Mary Magdalene's church, 'a holy place where everyone is welcome' has always belonged to the anglo-catholic tradition and embraces the ministry of women priests. Clergy wear liturgical dress and are assisted by Servers. Incense is used for festivals. The congregation are welcoming, warm hearted and open to gradual change. We meet Sunday by Sunday to worship God and pray for his spirit to enter our hearts.

Our principal service is the Parish Mass held each Sunday at 9.15 am followed by refreshments. Weekday Mass is held on the first Thursday of the month at 9.15am and Morning Prayer is held on all other Thursdays at 9.15am. The church has a small galley kitchen, accessible toilet with baby changing facilities and a loop system. We have an extended and recently refurbished children's area which is supervised during the Parish Mass by experienced church members using material appropriate to the church's liturgy.

Outwood



The Churches



St Peter's

We are a very sociable, welcoming church, with a relaxed and informal atmosphere, inclusive to all. We value our close sense of community.

We enjoy a mixture of traditional and modern worship styles led by a worship team, supported by up-to-date sound and projection systems. The priest usually wears an alb and stole which, like the liturgy, reflects the church's seasons.

Stanley



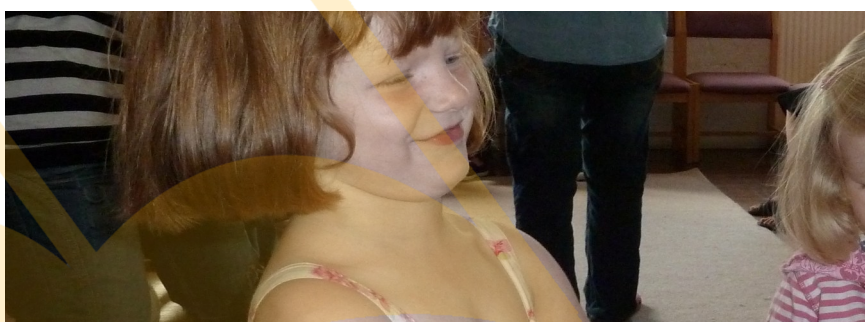
St Anne's

St. Anne's started life in 1874 and is a simple compact structure encouraging closeness of worship and community. Visitors and newcomers have described it as a welcoming church and every effort is made to make it so. Tradition is middle Anglican which makes it easy to assimilate into and celebrants do not feel constrained whatever their persuasion. We are very accommodating.

Adjacent to the church is a well-used church hall which caters for several different activities for residents. We have recently upgraded the choir vestry and created a store area which has improved facilities for church groups, younger people and possibly smaller groups within the community.

We enjoy a mixture of traditional and modern worship styles led by a worship team, supported by up-to-date sound and projection systems. The priest usually wears an alb and stole which, like the liturgy, reflects the church's seasons.

Wrenthorpe





Stanley

Sunday 10:45am Mix of Family

Communion and Service of the Word

Monday 9:30am Morning Prayer



Outwood

Sunday 9.15am Parish Mass

Thursday 9:15am Morning Prayer



Alverthorpe

**Sunday 9:30am Mix of Holy Communion and
Morning Prayer**

Tuesday 9am Morning Prayer

Wednesday 11am Short 'said' Holy Communion



Wrenthorpe

Sunday 10.45am Holy Communion

Wednesday 9am Morning Prayer

Wednesday 2.15pm Holy Communion



Occasional Offices across the benefice

Baptisms : 40 - 55

Weddings : 4 - 8

Funerals : 60 - 75



Busy churches, people focussed at the heart of communities

Alverthorpe

Our building is used by the uniformed groups. We hold a monthly Saturday benefice prayer group and Saturday coffee mornings to raise funds for specific charities. There are plans to develop the large open plan church building to enable greater community use.

We have extensive links with St Paul's Primary School



Outwood

Currently Rate My Mind Group and Foster Mums Choir meet regularly in church.

Every Wednesday morning there is a Community Drop-In in our Church Institute with coffee/tea, quizzes, bingo and music, open to all ages and free of charge.

The Community Garden group meet on Friday morning at 12.30pm in the church garden. Mothers Union meet regularly both in church and in member's homes

Stanley

Mondays: Lighthouse Café a warm space with drinks, snacks etc, Stanley Community Choir, Tuesdays: Tuesday lunch club for older people, Wednesdays: Knit & Natter and Thursdays: Children's Ark baby and toddler group

Also we have regular social events and an annual village pantomime, as well as a monthly coffee morning. Our building is extensively used to provide a space for many local community groups.

The local primary school – St.Peter's C of E has just received an excellent SIAMS report which has reflected our strong church links.

Wrenthorpe

Within the church we run Sunday school is held at the back of church during the service, as and when we get children. During term time we run a weekly session of Cheeky Cherubs for pre-school toddlers and carers, a Teenage Drop-in for after school and Forget-Me-Not-Friendship Group.

A monthly group "Women of Substance" study the women of the bible followed by lunch, craft and fellowship and is open to the whole benefice.

Associated with the church: There is a Social group, Network group, outreach to Gateholme which is a home in the parish for people with special needs.

Within the Church Hall: Brownies, Beavers, Cubs, Guides, Scouts and Explorers meet weekly. Other regular users include other Parent/Carer and Child groups, Art and Craft Group, Keep Fit, remedial Yoga and a major-ette troupe.



Busy churches, people focussed at the heart of communities

Across the Benefice

There are many activities across the benefice involving all four churches, examples of these are:

- We have a monthly men's group (MAPPS) that is attended by men both in the congregation and from the wider communities.
- A Benefice wide prayer group (Lifeboat) that is held at St. Paul's.
- Occasional prayer walks across the benefice.
- Our recent Benefice Lent course was well supported with over 30 people taking part across the benefice. Other highlights of cross benefice activities :
- A benefice Tuesday night house group
- Confirmation recently of four adults under forty and one teenager at Wakefield Cathedral
- A start course just been run for adults
- A youth exploring faith course just been run
- A benefice office being set-up
- A benefice pastoral group to be set-up
- St Paul's celebrating its 200th anniversary this year, 200th anniversary of St Peter's last year and St Anne's 150th anniversary last year.

We are looking at ways in which our churches can work together on various projects. One of the main areas for us to develop is mission and outreach to those on the fringe of church life. We shall also be looking at how to deepen our discipleship and developing house groups for mid-week fellowship.

Our congregation in the community

There are very extensive links with local primary schools which include two Church of England schools. There are many opportunities to lead collective worship, welcome classes into church and serve as a governor.

Three of our churches have link parishes through the Diocesan Tanzanian link.

All the churches are keen to support and become more aware of local, national and international charities through coffee mornings, special events and general sup-



Vicarage

A well proportioned four bedroom detached home, presented to an extremely high standard throughout with driveway parking and well maintained gardens.

The property is situated between Stanley and Outwood. There is a good range of local shops, schools, railway stations and recreational facilities close at hand and the national motorway network is readily accessible.

Stanley/Outwood



Our People

Clergy

Associate Priest: Revd Diane Komorowski

SSM: Revd David Teece

The Revd Stuart Millington, a retired minister, lives in the benefice and is active in all the churches.

Licensed Lay Ministers – LLMs

Simon Beresford, David Greenwood-Haigh, Daniel Park, David Payne, Vicky Wilson

All licensed to the benefice.



Finance Summary—Alverthorpe

Income	£
Planned Giving	12725
Other collections	1886
Donations	11280
Gift Aid recovered	10082 (2yrs)
Fund Raising	1210
Trading and lettings	285
Wedding Fees	830
Funeral Fees	6934
Grants	196
Total	45428

Expenditure	£
Parish Share (100%)	22733
Salaries and Clergy costs	2403
Service costs	454
Wedding and Funeral fees to DBoF	1111
Admin (including insurance)	5993
Repairs and Maintenance	2174
Utilities	4791
Charity Donations	2343
Fundraising costs etc.	175
Total	42177



Finance Summary—Stanley

Income	£
Planned Giving (PGS, SO)	18772
Gift Aided envelope donations	6473
Collections and other giving	5385
Income tax recovered	7825
Donations to pass on (contra)	553
Coffee mornings, fayres and gala	6838
Pantomime	3900
Other fundraising	891
Grants received	350
Investment income	397
Rent received	8934
Fees received	1054
Café receipts	12386
Total	73757

Expenditure	£
Parish Share	38853
Church running expenses	11091
Café running expenses	10700
Clergy expenses	34
Other expenses	1291
Charitable donations	4580
Salaries	9479
Fees to Diocese, Verger, Organist	100

Total 76128

Cash Funds

Bank current account	10651
Café bank and cash	9078
Fees account	200
New buildings account	
Charities account	802
Base rate tracker account	42078
Business reserve account	



Finance Summary—Wrenthorpe

Income	£
Gift Aided	27981.78
Non Gift Aided	1903
Collections	3393.84
Donations	975.87
Events	2751.33
Fees	898.80
Tax Rebate	8648.38
Interest	3.40
Hall Income	14668.76
Straight thro	1307
From Reno Fund	5544.84
Cheeky Cherubs	54.35
Renovation Fund	4000

Total 72594.40

Expenditure	£
Ministry	1519.76
Utilities	6785.67
Health & Safety	503.72
Minor Repairs	798.26
Upkeep of Services	1824.13
Improving Services	2043.11
Diocese	24000
Hall Utilities	3537.99
Hall Costs	5974.52
Charities	4164
Hall Insurance	1234.71
Church Insurance	1572.84
Straight thro	1275
Organist Fees	65
School Drop-in	66.94
Cheeky Cherubs	313.50
Renovation Fund	3273.98
Diocesan Fees	229
Other Salaries	110

Total 59292.13

Gross Surplus	13468.58
Renovation Fund	6270.86
Restricted Funds	166.31
Nett Surplus	7031.41



Finance Summary—Outwood

Income	£	Expenditure	£
Regular giving	15208	Parish Share	15839
Collections and other giving	3820	Church running costs	11882
Gift Aid recovered	3929	Organist	2295
Fund raising	6909	Fund raising costs	1283
Fees for weddings and funerals	1786	Donations	100
Church Institute etc	13704	Church Institute costs etc	12341
Dividends and Interest	2026		
		Total	43740
Total	47382		

Cash and Investment balances

Cash and deposit accounts	34752
Investment assets (Shares)	67101



St Mary Magdalene's Church

560 Leeds Road, Outwood,
WF1 2JL



nwbchurches.org.uk/outwood/



fb.com/outwoodparishchurch

St Peter's Church

Lake Lock Road, Stanley, Wakefield
WF3 4HW

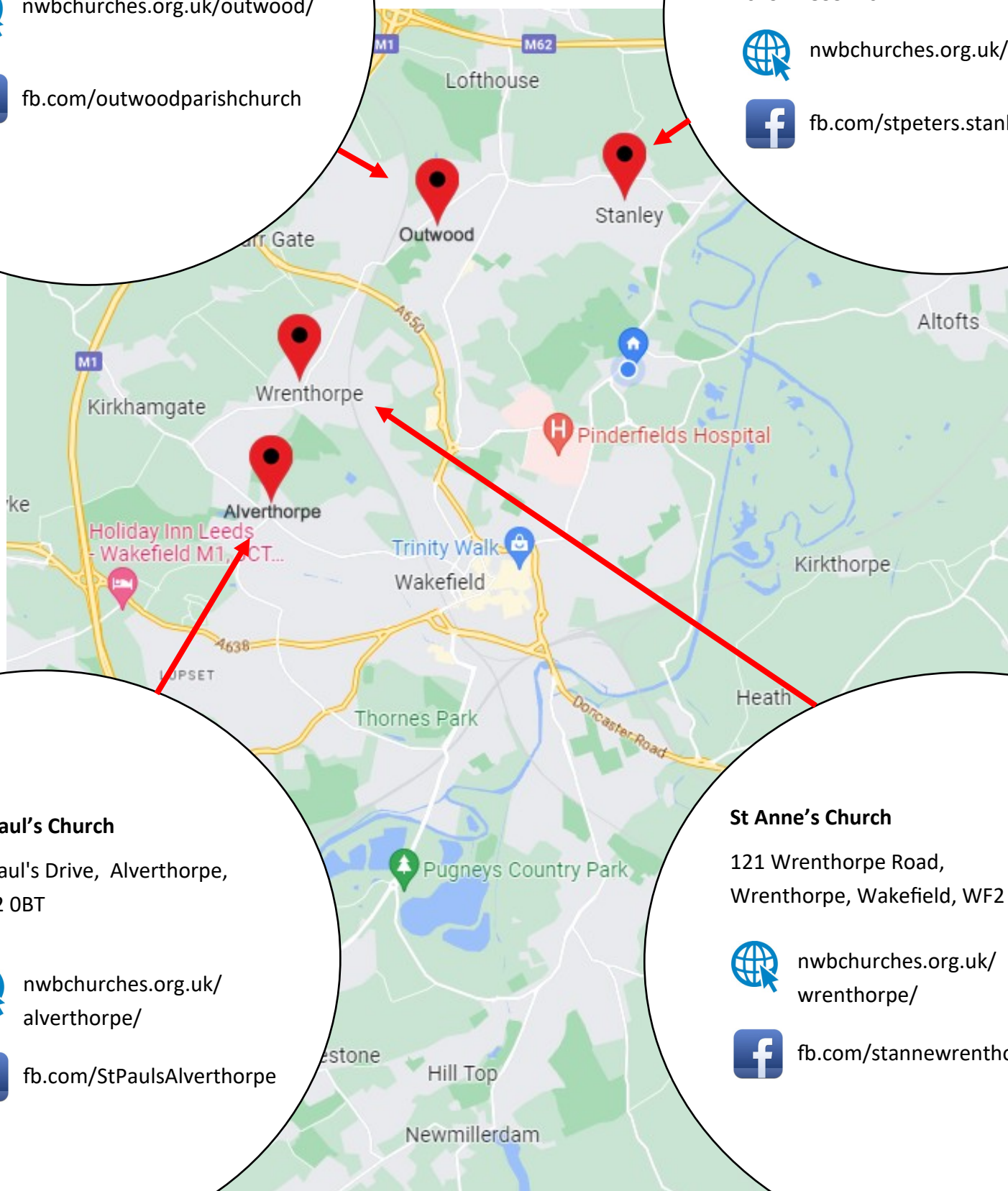
01924 835746



nwbchurches.org.uk/stanley/



fb.com/stpeters.stanley



St Paul's Church

St Paul's Drive, Alverthorpe,
WF2 0BT



nwbchurches.org.uk/alverthorpe/



fb.com/StPaulsAlverthorpe

St Anne's Church

121 Wrenthorpe Road,
Wrenthorpe, Wakefield, WF2 0JS



nwbchurches.org.uk/wrenthorpe/



fb.com/stanneuwrenthorpe

