

Welcome to the Parish Profile for the Benefice of

**St Paul's Church,
Stafford**

**& St Thomas' & St Andrew's
Church, Doxey**





Contents



Page		Page	
3	Letter from the Church Wardens	11	Our Services and Ministry Team
4	Our Vision for the Future	12	Safeguarding
5	What we have to offer in Stafford	13 - 17	Children's Ministry
6	Where we are in Staffordshire	18	The Vicarage
7	What Staffordshire has to offer	19 - 27	St Thomas and St Andrew's Church
8	The Benefice and who we are	28 - 34	St Paul's Church
9	Our church buildings	35 - 40	MAP for St Thomas and St Andrew's Church
10	Maps of the Parishes	41 - 46	MAP for St Paul's Church



LETTER FROM THE CHURCH WARDENS



As the Churchwardens of St Thomas' and St. Andrew's Church, Doxey and St Paul's, Stafford, we are delighted to be serving our churches as wardens through the current vacancy.

We hope that this Parish Profile gives you a feel for what our churches are about: who we are, what we do, what we do together as a benefice and how we want to develop our faith and our fellowships. Of course, these glimpses don't tell the whole story so we very much hope you will come to visit and meet us. Indeed, we hope and pray that you might decide that this benefice will be part of your journey of faith in which your gifts and skills can complement ours for God's Glory and His work within our two communities.

We are committed to the authority of scripture and a clear Gospel message, as well as being open and welcoming churches which engage with our diverse communities through groups and social activities.

Whilst maintaining our different traditions, we work together in many ways, principally through the employment of a Children's, Youth and Families Facilitator who works energetically and tirelessly in both parishes. We share in joint services and events, together with home groups and other activities.

We recognise there is potential for significant growth across all ages at both churches, well beyond what we currently see. We are looking for someone who will lead us to achieve this – through reaching more widely into our communities and through better harnessing and developing the gifts of the Spirit within our existing congregations.

We are looking for someone who can respond to this challenge with prayer, clear leadership, real understanding, and a good sense of humour. This will be a rewarding challenge for the right person. Is that you? Can you help us to build a bigger, bolder future?

We hope you will prayerfully choose to apply and we look forward to meeting you.

Doxey



Jenny Mash



Chris Whitney-Cooper

St Pauls



Christine Hollis



Jackie Palphreyman

OUR VISION FOR THE FUTURE

St Thomas' & St Andrew's (Doxey Church) and St Paul Forebridge seek to be an active and involved Christian presence in the communities that we serve. With the Bible as our basis and led by the Spirit, we listen to, and try to live out, the teachings of Jesus.

We hope and pray that our next incumbent will help us to flourish and grow more as a Spirit-filled, disciplined community. We look forward to working with them; we do not expect them to be perfect nor have the answer to every challenge, but to work with us to engage with our communities and seek to transform the benefice. Our vision is to seek to share Jesus in creative and innovative ways which are relevant and supportive of families in our churches and communities.

For further details of the role see the Role Description.

If you wish to apply, we welcome applications that demonstrate the experience and skills relevant to the Person Specification attached.

For more information contact The Bishop of Stafford, The Rt Revd Matthew Parker (Via his PA) Email: gemma.trueman@lichfield.anglican.org

Simeon Trust/Hyndman Trust representative (Joint Patron)

The Venerable Kevin Roberts

kevin.roberts@simeons.org.uk 07880 762868

Simeon's Trustees: <https://www.simeons.org.uk>

The Vicar of Castle Church, Stafford (Joint Patron)

The Rev. Phillip Sowerbutts;

Vicar@castlechurch.org.uk 07910 606876

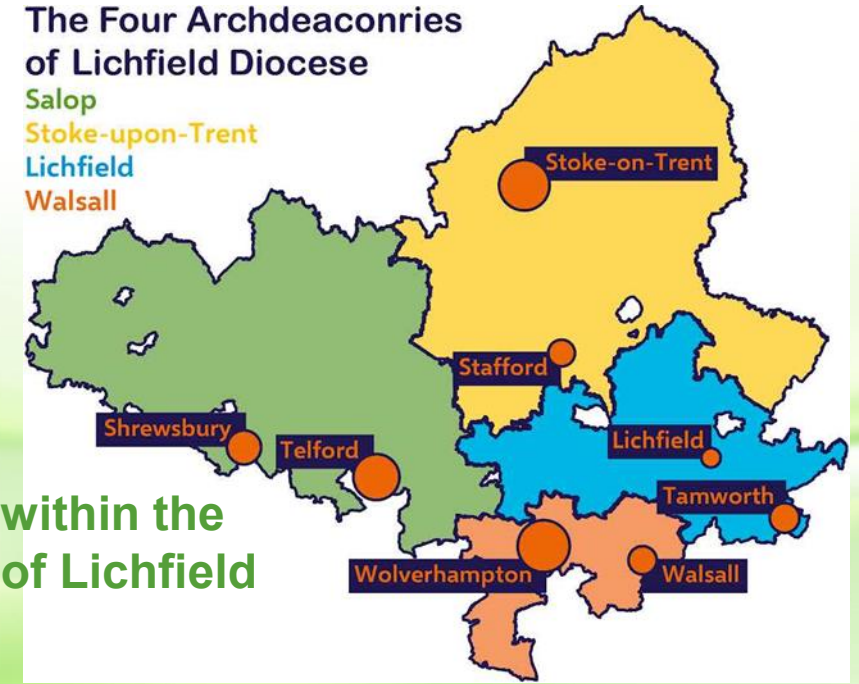
The Four Archdeaconries of Lichfield Diocese

Salop

Stoke-upon-Trent

Lichfield

Walsall



Stafford within the Diocese of Lichfield

We would like to thank you for reading this profile and we hope that you will consider applying for the position of Incumbent.

- ▶ St Paul's Website: <https://www.stpaulsstafford.uk/>
- ▶ Doxey's Website: <https://www.doxeychurch.co.uk/>

What we have to offer in Stafford



Stafford Town Centre

Stafford is the County Town of Staffordshire with an outstanding further education provision and a number of excellent schools. There are a number of new housing developments making it an ideal commuter belt for the West Midlands and North Staffordshire.

It is also the home of the 22nd Signal Regiments, Gurkha and Airforce (Chinooks) contingents as well as being the home of the County and Borough Councils.

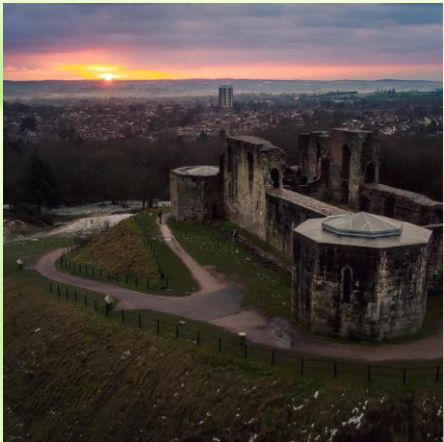
We have Stafford Gatehouse Theatre which puts on a Shakespeare play each year either at the Theatre. Then there is the pantomime and other shows and stars visit.

We are also home to The Ancient High House as well as having Izaak Walton's Cottage close by.

Stafford Castle runs many events throughout the year and has a visitor's centre and shop. Early each Easter Sunday Morning members of the churches in and around Stafford join together for the SonRise event to watch the sun come up at the castle.



The Ancient High House



Stafford Castle at Sunrise



Izaak Walton's Cottage

Where we are in Staffordshire

Staffordshire prides itself on being ‘the Creative County and is part of the Diocese of Lichfield. For those days off when you need space away from the Benefice, the area has everything you could wish for – except the sea, but even then there are several wonderful beaches all within a two-hour drive. We have wild landscapes, cultured museums, stately homes, sports of many kinds and at least two theme parks within the county.

For those with family and friends in other parts of the country, we have great transport links: the M6/M6Toll links with Stafford north-south, leading to the M5 in the south, to the west the A5/M54 give easy access to north and mid Wales, while the A50, A5 and M6Toll give swift access to the M1, M42 and A38 for the East Midlands and the south-east. Rail links are also good with all major towns having direct services to London and Birmingham and four major airports surround our borders – Birmingham, East Midlands, Manchester and Liverpool.



Motorways and Trunk Roads

What Staffordshire has to offer

Leisure and pleasure

For walkers and climbers, in and around Stafford, there's an extensive network of canals, Cannock Chase, The Roaches, and the Shropshire—Welsh borders. If you're into more organised fun, Alton Towers and Drayton Manor Theme Park can provide it. And then there's many museums including Walsall's New Art Gallery and the RAF museum at Cosford; not to mention excellent sporting options for both watching and participating – from bowling and paintballing to the Tamworth Snowdome.



Then there is the Wedgwood Museum as well as theatres, cinemas, restaurants and superb tea shops just begging to be discovered... If shopping is your thing, there is a range of options, from the chic boutiques at Barton Marina, and Shrewsbury to large malls in or near the urban centres. We're fortunate in being the home of many fine ales and beers brewed in Burton on Trent (the museum is well worth a visit), and Staffordshire oatcakes are a unique local delicacy to be discovered.



THE BENEFICE – WHO WE ARE



St Paul's and St Thomas' & St Andrew's, were brought together into a United Benefice in 2012 when the previous incumbent (Revd. Martin Strang) was appointed the Vicar of both Churches. The post is a full-time incumbent whose time is split 50/50 across the Benefice. Neither church has a burial ground although Doxey does have a memorial area for the burial of ashes.



The churches, while remaining fairly independent, enjoy sharing things such as, online prayer meetings twice a week, joint newsletter (4 weekly), nurture groups, evening Bible Study Group, evening services, joint services on Ash Wednesday, Maundy Thursday, Advent etc, and social events (e.g., Men's and Women's Fellowship meals). The parishes do not have a common boundary, but the distance between the two churches is only about 10 minutes by car.



Both churches have a generally open evangelical and inclusive approach to our faith – although, as with many local parish churches, there is a range of views within the fellowship. While the age profile of both churches is on the higher side, encouraging children, young people and their families on their faith journeys is very important to us.



The benefice has always paid its diocesan Common Fund in full. Both churches financial situations are good. Generous giving, including several one off donations, together with careful attention to expenditure, has resulted in small surpluses for us in recent years. Although both churches expect a small deficit for the year 2023 there are good reserves which mean that this will not cause any difficulties in the near future. The churches have always been generous in our financial support of Christian work both locally as well as around the world.

Our Buildings



St Paul's Church

St Paul's Church, situated on the Lichfield Road, was dedicated in 1844, with the parish being carved out of the ancient parish of Castlechurch. It is a cruciform, Grade II listed, neo-gothic style church and has a number of stained-glass windows, notably the east window. The grounds around the church are pleasantly maintained.

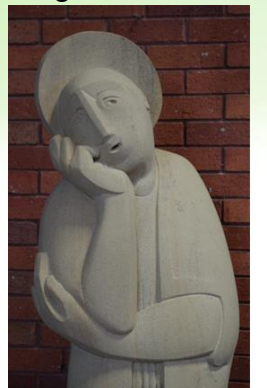


The buildings may be different in many ways, built in different times with different architecture but we are joined in our faith in the Lord and we both offer a warm welcome to all.



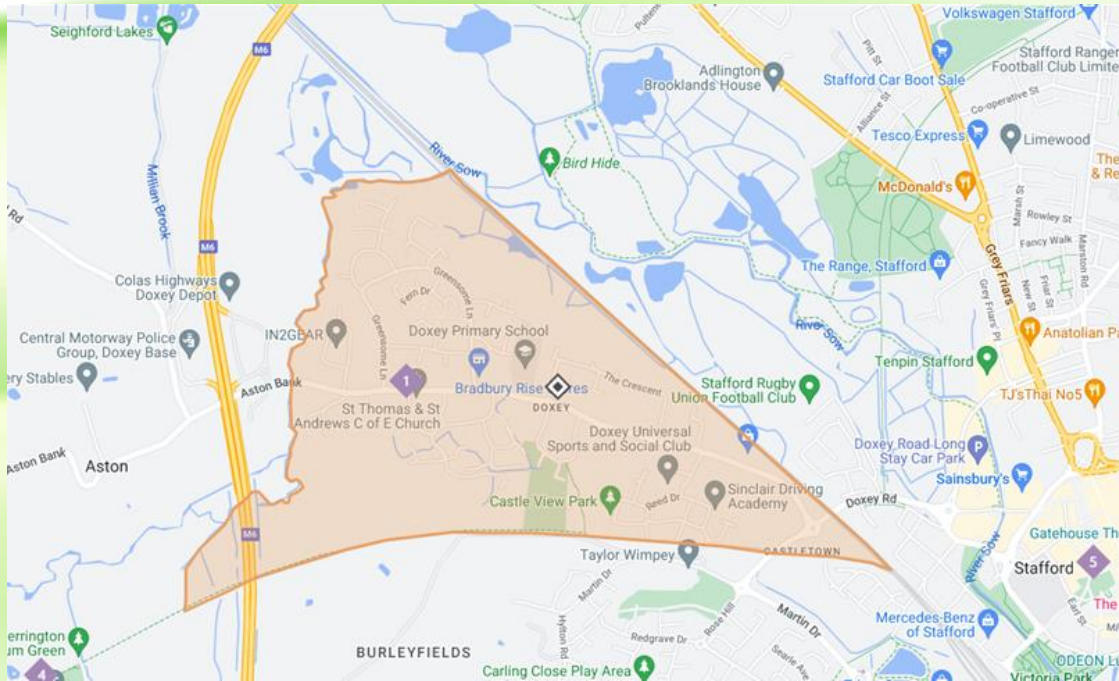
St Thomas' & St Andrew's Church

St Thomas and St Andrews church was built in the 1970's and is in a good state of repair. The main church has been refurbished with new carpet and the seats recovered in the last few years. In addition we have updated the lighting to LED and all of the heating receives annual services.

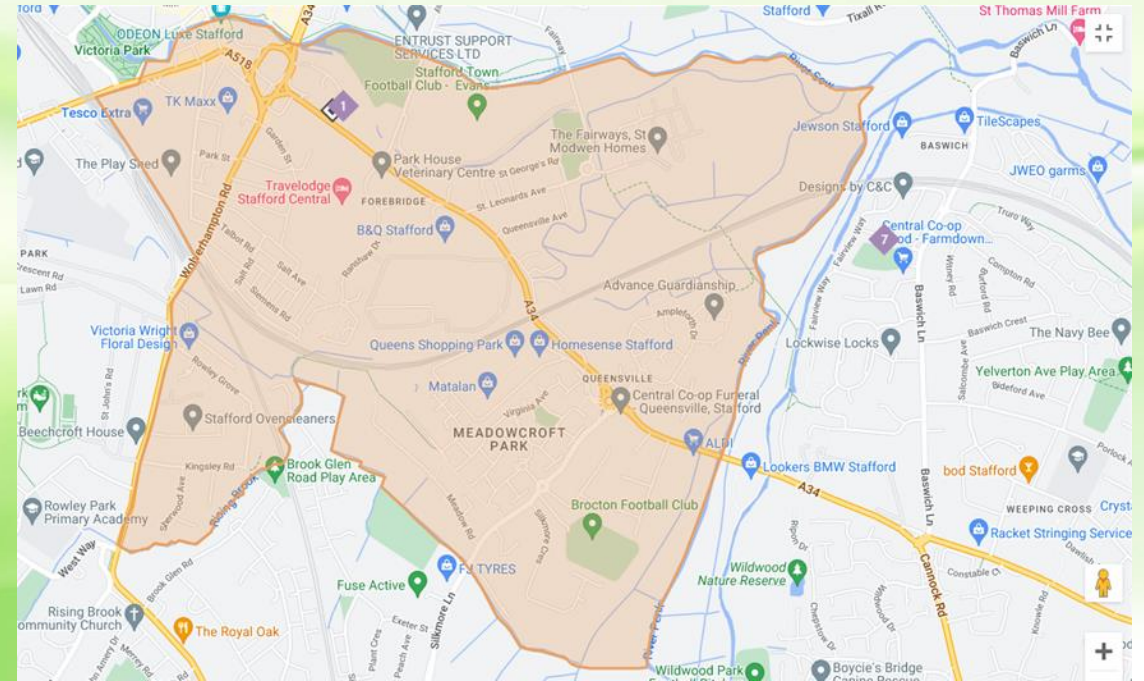


THE PARISHES AND WHERE WE ARE

St Thomas' & St Andrew's Church, Doxey



St Paul's Church, Stafford



Our Services and Ministry Team

St Paul's Church		St Thomas' & St Andrew's Church (Doxey)
10.30am Holy Communion Common Worship (CW)	1 st Sunday	10.30am Morning Worship 7.00pm 'A Quiet Place' (Joint service with St Pauls)
10.30am Morning Worship 3.30pm Messy Church – church but a whole lot messier with crafts, worship and a shared meal after	2 nd Sunday	10.30am All Age Service - An informal service with contemporary music from the Gather Band
10.30am Holy Communion (CW)	3 rd Sunday	10.30am Holy Communion (CW)
10.30am Morning Worship	4 th Sunday	10.30am Holy Communion (CW)
10.30am Holy Communion/ Morning Worship/ Joint Service with Doxey	5 th Sunday	10.30am Morning Worship/ Joint Service with St Paul's

At St Paul's, in our 10.30am morning service the sung worship is led with music from the organ on 2 to 3 services a month, while at Doxey Church there is a piano for most services and a music group (Gather Band) with piano, guitars, flute and drums (when we have a drummer available) who play contemporary songs and hymns at informal services.

The Ministry Team

At St Paul's;

- One Reader
- One Authorised Lay Minister with responsibility for pastoral care

At St Thomas' & St Andrew's;

- One Reader
- 2 licensed lay service leaders
- A retired minister who leads services at both churches
- One Authorised Lay Minister with responsibility for pastoral care.

In common to both;

- We employ a Children's, Youth and Families' Ministry Facilitator (CYF Facilitator) to work 24 hours a week.

In addition, much of the Mission and Ministry in these Parishes is carried out by laity outside of the Ministry Teams

Safeguarding

- Ensuring that our churches are safe places is so important to us as we aim to offer God's love to all those in the community who come seeking acceptance, healing and love.
- We are committed to safe pastoral care for all adults and children to whom we minister. To enable this the Benefice has appointed two Safeguarding Coordinators, one at each church who work closely together. We have joint safeguarding policy and procedures, and we seek to follow the Diocesan, along with the national Church of England's, guidance.
- We undertake proper care in the appointment and selection of those within our churches who may work with children and vulnerable adults. All who work with vulnerable adults or children, or who are in positions of leadership in the churches have appropriate enhanced DBS checks.
- To promote safe practice, we have regular safeguarding training and discussions at the PCCs to consider inclusion and empowerment of people who may be vulnerable. We recognise that it is the responsibility of each of us to prevent abuse.
- Where needed, we will work positively with the Diocesan Safeguarding service, reporting all concerns factually and promptly.

THE CHURCH
OF ENGLAND

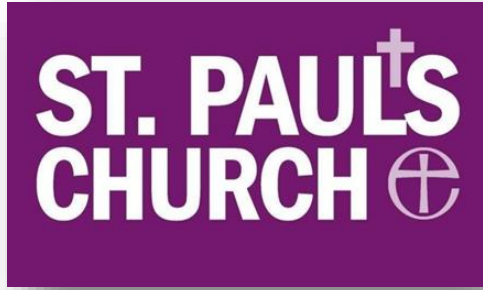
safeguarding

a pocket guide



**What to do if you
have a concern
about a child,
young person
or adult within
the Church**

Promoting a Safer Church



Children, Youth and Families' Ministry Lead by our Benefice CYF Facilitator



**Lottie
Backhouse**

Following the pandemic, both churches found that the attendance of children and families had dropped considerably. To reach the communities and encourage families, if possible, to return and new families to join the churches we offer a wide variety of children and family activities coordinated and run with our Benefice CYF Facilitator, Lottie, (who is employed through The Youth Net) at both churches and at Doxey's local community centre (Doxey Hub). Lottie is supported by volunteers from both churches and at the Hub.

Doxey Youth Group



Doxey currently has a Youth Club that runs on a Monday night for school years 6 & 7 with funding for our activities from the Staffordshire Borough Council. We have 11 children from these year groups regularly attending. We also have 6 young helpers who are in years 9-12. We regularly meet with all 17 youngsters at the Doxey Youth Group.



We play games, do food crafts such as pizza, quesadillas, decorating biscuits, and other crafts including charm bracelets, sand art and scratch art. We have taken the children to Tenpin Bowling, Laser Tag as well as Flip out Trampolining.



Engaging with and supporting our community – a trip to Llandudno

We run a Doxey Kids at the Hub group on a Tuesday for children in Reception to Year 2. Each session is based on a Bible Story, with games and crafts that relate to the story. We explore what this story means for us and how it can help us in our lives. At the end of the session we provide a sandwich tea for the children. Through this we are starting to rebuild relationships with the community and Doxey Primary School lost during Covid and we are starting to see more engagement with the church. Some of the families have also started to join us at Church for Doxey Friends and Messy Church.



Doxey Kids @ the Hub

During the school holidays (both half term and end of term) we run 'Family Fun at the Hub' sessions free of charge to provide a safe, friendly place for youngsters to come and play with their parent or carer. We play games, make crafts, and get to know the families and build relationship with them. We also provide a sandwich lunch.



Holiday Fun @ the Hub

Family Support Group

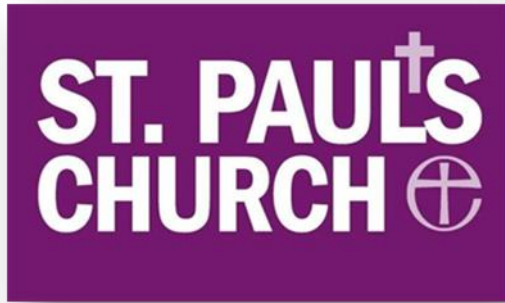
We have a Family Support Group that runs on a Tuesday morning with 10 families attending regularly. Over hot drinks and cake we have had some interesting and informative conversations. As well as this we have also had a Crochet lesson, made diamond art coasters and made Christmas tags for the church fair. It has also enabled the members to make lots of crafts that we can use as presents enabling us to save money when giving gifts. The members come from many different backgrounds that have gelled together and are able to offer their experiences with managing families, often sharing money saving ideas and offering benefit advice with each other. Some of the group were able to join Doxey on their Llandudno trip as well as a few members attending our monthly Messy Church.

St Paul's Tots – long established and well known in the community

Our parent/carer and tots' group runs on a Wednesday morning and has 11 regularly attending families. We have a range of toys from baby toys, to the role play home corner, see-saw, ride-ons and Happy Land. We do a simple craft each week as well as providing a snack and drink for both parents and children. We have recently introduced a singing time at the end of the session which is working very well.



St Paul's CE (C) Primary School
Learning and growing together
in God's love



Our sessions take place on the 2nd Sunday of every month except August. We currently have 3 families attending Messy Church on a regular basis with more dropping in when time allows. The topic changes yearly with us currently looking at Heroes of the Bible. We meet together for fun, games, food and paper crafts, talk about the character of the month and share a sandwich meal followed by cakes.

We have good links with St Paul's school. Our CYF Facilitator attends the school once every two weeks to run Collective Worship. She also meets the worship council every half term and a range of pupils every term for a pupil voice discussion in accordance with the Church of England, SIAMS Framework. The school attend services in church every term to celebrate Christmas, Easter and St Paul's Day. We are currently working with the school to involve their choir in the occasional church service on a Sunday. They have attended two services so far (June and Christmas) which were very well attended by the children's families. The church has a good relationship with the school and have supported them through some difficulties at times. We are very keen for this relationship to continue.



The Vicarage

Front



- The Vicarage is sitting in a quiet area adjacent to Doxey Church. Built in the 1970's it is a large family home sitting on approximately ¼ acre of ground.
- It has an integrated garage at the side and ample parking space at the front.
- The house has;
 - 2 reception rooms
 - Large kitchen
 - Utility
 - Downstairs cloakroom
 - 4 bedrooms
 - Family bathroom

Rear



Kitchen

St Thomas' and St Andrew's Church and Church Family



Known locally as
Doxey Church

WHO WE ARE

Doxey is a small church with a big heart, looking to support the community of Doxey and the wider area, and to bring the light and love of God to all we meet.

Before the Covid pandemic, we had a wide range of ages at our services, including a healthy number of children and young families. Since the pandemic, the families have not returned and moved on. We are now actively seeking to attract new families, helped by our Benefice Children, Youth and Families Facilitator, Lottie.

There are currently 56 (39 in and 17 outside the parish) members on the electoral roll (2023) and regular attendance at Sunday morning worship is around 35 people. This small, but very engaged congregation organises a wide range of activities to meet our needs and those of the wider community. These include joint evening Bible study groups, two joint weekly prayer services on zoom, four weekly Benefice Newsletter and bring and share meals as well as our individual Sunday Worship; daytime Bible study groups, Messy Church for special occasions: support for our local homeless charity, House of Bread, including a 'pop up' foodbank; and Doxey Friends Community Initiative.

The church is in a 1970's building on the edge of Doxey with the four- bedroom vicarage for the Benefice occupying a quiet location adjacent to the church.

MISSION & MINISTRY



St Thomas' & St Andrew's Church, Doxey

Vision statement;

“Journeying together with Jesus for the community and with the community”

This is by....

- Discovering the heart of God
- Growing Disciples
- Reaching New Generations
- Transforming Community
- Practicing Generosity

How this vision is enacted in our church activities can be seen in the Mission Action Plan (MAP)



Doxey Primary School

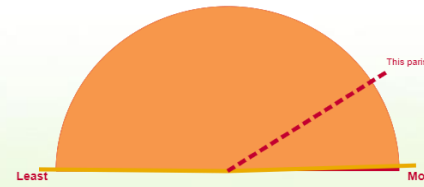


Harvest Festival

- Daytime and evening home groups (Evening group joint with St Paul's Church)
- Twice weekly online prayer meetings (Tuesday & Thursday).
- Partnership at the community centre – “Doxey Hub”
- Outreach events, each year, such as: Family fun days, Messy Church (Christmas, Easter & special events i.e. Coronation and Jubilee) .
- “Doxey Friends” coffee and chat, monthly.
- Rambling club, monthly.
- A quiet evening service.
- Strong links with Doxey Primary School.
- “Open the Book” team.
- Support of House of Bread.
- Knitting group & Coffee morning groups (support and prayer).
- Mission Support including: Church Mission Society missionaries in South Asia & Birmingham City Mission.



- Doxey has historically been isolated from the wider town but is now a suburb of Stafford. It is primarily an urban residential area, with mixed housing of which approximately 30% is social/ affordable housing. It has its own identity, with recognisable parish boundaries.
- CUF (2023) statistics <https://cuf.org.uk/parish/200385> for this parish give this summary:
 - The population of this parish is **2,498**. It ranks **2,268** out of **12,382 nationally**, where 1 is the most deprived parish.
 - Social housing – 32.9%. Older population – 14.5% Child poverty – 24.8% Lone parents – 34.6% No qualifications – 25.1%. Ethnic Diversity - 7.8%
- In recent years, there has been considerable development of owner-occupied housing on two estates. As well as older housing along the spine road, there are areas of housing association development which have a high number of single parent, workless families and otherwise vulnerable households. All in all, Doxey is a very mixed area.
- The village has a primary school which has good links with the church, and across Stafford there are a range of secondary schools including a private Grammar school and a rapidly expanding further education college.
- We are next to Doxey nature reserve and within Doxey, there is a community centre, called the Hub, but limited other community facilities.
- The church is actively involved with the community, using the Hub premises for youth activities, family fun days and for a 'pop up' food bank.



This means that Doxey parish is among the most deprived in the country.



A variety of WORSHIP styles

A Quiet Place



'A Quiet Place' happens on the first Sunday evening of each month. Each session is based around a theme using words, images, music and times of silence. Some themes have been, 'Rivers', 'Doubt', 'The Emmaus Road', 'Look at the Birds' and 'Candlemas'. It is an opportunity to come into church for a quieter time in contrast to the 'busyness' of a morning service. There is no singing or sermon, and people arrive and leave quietly. As well as members of our own congregation, we have a few people that come from other churches and none.

With Piano & The Gather Band

Most services are led by the piano, offering traditional songs and hymns, but The Gather Band was formed a few years ago to help the church embrace a more modern style of music and worship. The band has a bassist, guitarists, pianist, flautist and singers. We lead an informal service once a month to teach and lead songs composed from the year 2000 up to the present day. This has enabled newer songs to become part of the normal more traditional common worship and members of the congregation and band to share their differing leadership skills during the informal services.



Children's Sunday Morning provision

Post Pandemic the numbers of children attending the church dropped so we reviewed our Sunday morning kids club provision and looked for other opportunities to engage with children and families. We started a Kids at the Hub activity in the week and offered family fun activities in the Hub during the holidays. So, our Sunday morning provision for children currently consists of bible activity bags with a rota of someone to be on standby if we have any children attending. Each bag contains a Bible Story, activities, games, crafts, and snacks for the children. The bags can either be used by children and parents on tables at the back of the church or picked up by a children's volunteer who can run a session in our meeting room. Should we find that children are attending on a regular basis we plan to review restarting our Sunday Morning Kids Club.





Doxey Friends

has become a well-loved opportunity to meet friends, neighbours from in and around Doxey area and providing them with the opportunity to meet neighbours and make new friendships around cake and activities. We meet on the third Sunday of the month where cakes and craft that are important ingredients of our time together. It is a low-key introduction to the church and to the Christian values of welcome and hospitality.

The numbers of folk attending Doxey Friends have gradually recovered from the pandemic and on average we get between 20 and 30 people, usually a mixture of church members and families, elderly, and children from Doxey.

We have had some great interactive activities including a Lego special (with a guest from Billund Lego Campus, Denmark), quizzes, bingo sessions, memorial for Queen Elizabeth II, planting bulbs and a Bake-off competition. The families have been able to join other events such as Messy Church, Youth Club and Kids at the Hub and to other church events.





Happy Anniversary

We celebrated our 50th Anniversary with a weekend of fun and a special Eucharistic Service with Revd Bill Mash and Bishop Matthew. Many from our sister church St Pauls attended our service as well as three of our retired vicars. Food, drink and cake, ceremoniously cut by Bishop Matthew, were enjoyed by all.



ECO CHURCH

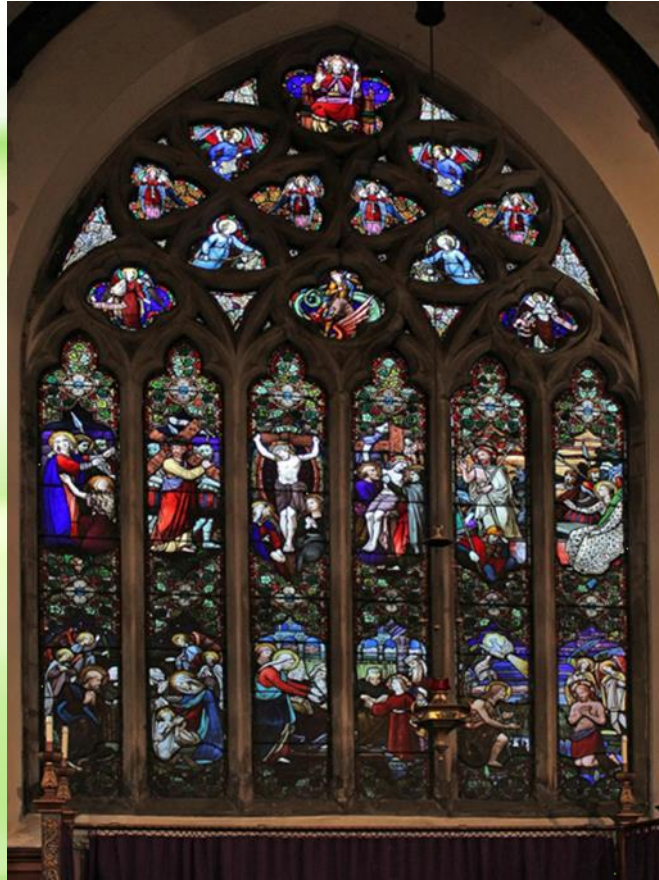
We started to meet as a small but enthusiastic Eco church group in May 2022.

We believe that being environmentally friendly is fundamental to our calling as Christians. As a church we are guided by the fifth Anglican Mark of Mission which is *“to safeguard the integrity of creation and sustain and renew the life of the church”*. Our concern for God’s creation takes us beyond a response to the environmental challenges facing our world today, it leads us to the heart of what it means to be a disciple of Jesus Christ. We begin to realise that the everyday choices, habits actions and decisions that we make as Christians have far reaching impacts on others in our world.

Over the months we worked through the Eco church survey around the five areas of Worship and Teaching; Buildings; Land; Community and global engagement; Lifestyle. As we worked through these areas, we began to put some actions in place with the result by September 2022 we were awarded the bronze Eco church award for our efforts to date.



St Paul's Church and Church Family



The East Window

WHO WE ARE

We are a friendly and caring church family aiming to engage and support our local families, community and beyond sharing the love and light of our Lord. We have had a wide range of ages in our congregations/groups although attendance numbers did drop during the pandemic. However, we are welcoming new people in to church on a regular basis with some leading to Baptisms, both adults and children, who are then returning as members of our church family.

There are 64 members currently on the electoral roll and regular attendance at a Sunday morning service is 30 people including children.

In the last 12 months we have held 4 funerals and celebrated 3 baptisms in the church although we have not had any weddings.

The church possesses one of the finest small two-manual pipe organs in the area. The pipes are in the organ loft and a movable console, situated in the Nave in front of the North Transept, which offers flexible use of this space. We have an organist who plays for us 2/3 times a month as well as special services during Easter and Christmas as well as funerals and weddings if requested.

There are many of the original pews still in place. However, the Lady Chapel in the South Transept has been refurbished replacing the pews with upholstered chairs making it a comfortable and flexible area where we hold Messy Church and smaller services.

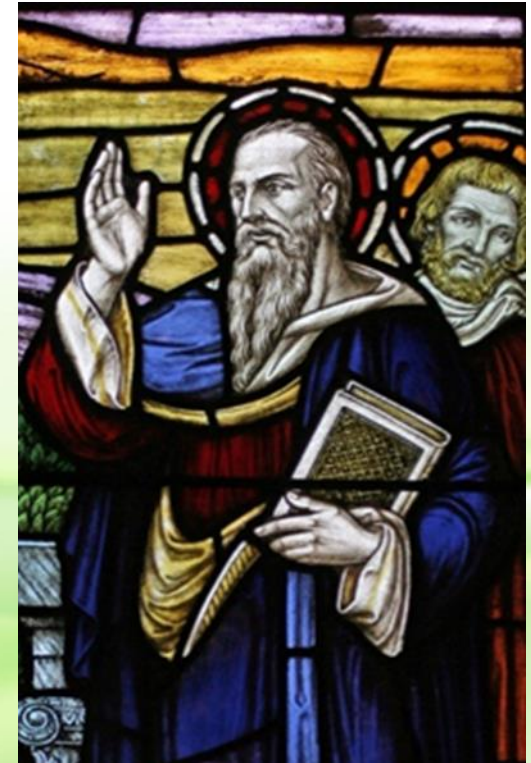
There is a small prefabricated building (Parish Rooms) to the right side of the church, entrance area together with WC and a tea room, which is used for church meetings, social events and our groups. The Church and Parish Rooms are definitely showing their age and some suggestions were made in our last Quinquennial in October 2020 which we are addressing. The boiler supplying heat to the Parish Room has recently been replaced with a like for like fossil fuel blown warm air system with approval of the DAC as going net zero was not feasible.

Our parish, with approximately 6,000 residents, is close to the town centre of Stafford, and has a blend of various different elements, such as – extensive residential areas, with more homes currently being built, a large Tesco Extra, 3 retail parks, night clubs, pubs & shops, as well as 5 retirement complexes and St Joseph's Convent Nursing Home. There are two primary schools and a day nursery in our parish.

Church Urban Fund statistics for this parish give this summary;

Social housing – 13%, Older population – 19%, Child poverty – 16%, Single parents – 25%,

No qualifications – 21%.



St Paul represented in one of our windows

Harvest Festival donated to two food banks.



Shoebox Sunday - provided by church family, Doxey, St Paul's School and Uniformed Groups and donated to International Aid.

MISSION AND MINISTRY

**ST. PAUL'S
CHURCH** 

Alongside the core elements of Worship and Discipleship we have identified and now work in the following 5 areas (i.e. 5 priorities for our Mission and Ministry) with some good progress being made:

- Ministry with Children and Young People
- Ministry with the over 55's
- Making the Most of our Baptisms, Weddings and Funerals
- Supporting each other as we serve God in the world. This has three elements to it:
 - *Supporting each other as we strive to live out our daily lives as Christians.*
 - *Linking with and volunteering with other organisations (e.g. Street Pastors)*
 - *Supporting other Mission and charitable organisations (e.g. House of Bread, The Youth Net).*
- Connecting with our linked families
- Links with local schools and nurseries.
- Links with St Joseph's Nursing Home.
- Links with four Retirement Complexes. A number of the residents are part of our church family.

St Paul's have long links with the retirement complexes locally such as Drakeford Court, Humphrey Court and Compton Close as well as St Joseph's Convent Nursing Home.

Residents frequently come to the church for our coffee mornings and other special events. In addition to these visits to the church our Lay Minister also offers Home Communion to residents of these facilities as well as members of our church family who are unable to attend church whether due to illness or disability.



Our charitable giving is based on our commitment to give 10% of our income to four categories:

International and Local Discipleship and
International and Local Humanitarian.

In addition, jointly with Doxey Church, we support a Missionary working in Brazil with Church Mission Society.

Prayer Shawl Ministry – shawl are knitted by members of our congregation, blessed and given to those in need of comfort or given as gifts to our Confirmation candidates.

Our Groups

We have groups running throughout each month. Whether it is learning a new craft such as Kintsugi, something for the children, parents all the whole family, or just a chance to have a chat over a piece of cake there will be something everyone can join in with.

**ST. PAUL'S
CHURCH** 



St Paul's have our own Mothers' Union Group who meet in the Branch Leader's home monthly. Some of the meetings include a guest speaker and the members of the group join with other MU groups from around the diocese at Shallowford once or twice a year. Some of the topics recently discussed were Activism against Gender-Based Violence and supporting victims of domestic violence in Stafford (including donations of toiletries and other items) as well as enjoying Afternoon Tea organized by members of another local group at their home. Also, in December some members and their husbands, enjoyed a delicious Christmas meal in Stafford College's Riverbank Restaurant.



**Homemade cakes
and scones**



**Coffee Morning
this Friday**

**from 10.00am to 12.00noon
here at St Paul's**

Fresh coffee  **And a warm
welcome
guaranteed**  *Or tea*

VE & VJ Day Poppies

ST. PAUL'S
CHURCH

Our knitters are doing an amazing job lead by our Chris, one of our Church Wardens.
Over 700 poppies have already been created with many more on the way for our Remembrance Sunday display.





Our Uniformed Groups

We have had links with these groups for many years with one of our Church Wardens and her family joining the church after her children became members of Beavers and Cubs and also became a leader together with her husband. Due to the groups size Cubs meet elsewhere at this current time but still join in with our events and services including our Autumn/Christmas Fairs, Remembrance Day Service and Shoebox Sunday.





Mission Action Plan

St Thomas' and St Andrew's Church, Doxey.

As agreed at PCC Meeting on 14/11/2023

Introduction

Mission Action Plan – a table, which is to help us think about, and focus on, our Ministry and Mission - how we Worship and serve God in this place. This is a table which is to be updated and amended, as necessary, to help us in our Discipleship.

“D, V & E” – The key areas of focus within the Diocesan Direction of Travel – Discipleship, Vocation and Evangelism. Many sections on the MAP include all 3 – highlighted is the prime aspect for each section of the MAP.

St Thomas' & St Andrew Vision Statement

Journeying together with Jesus, for the community and with the community, by

- *Discovering the heart of God*
- *Growing Disciples*
- *Reaching New Generations*
- *Transforming Community*
- *Practising Generosity*

Theme	Focus and Action	D	V	E
<p>Discovering the heart of God</p> <p>Be a worshipping community</p>	<p>Morning services –10.30am – Communion (CW), Morning Worship and Monthly Informal with the Gather Band</p> <p>Evening service – “A Quiet Place” – once a month</p> <p>Occasional special services – e.g., “Remembrance and Hope” Service & Christmas services and events</p> <p>United service with Renewal Fellowship (yearly)</p> <p>Continue to review our worship.</p> <p>Activities to grow together as a fellowship.</p> <p style="padding-left: 40px;">Bring and share lunches.</p> <p style="padding-left: 40px;">Summer Picnics</p> <p style="padding-left: 40px;">Working parties with refreshments</p>			
<p>Discovering the heart of God</p> <p>Build up our prayer life</p>	<p>Church prayer meetings</p> <p>Annual Day of Prayer for the New Year</p> <p>Encourage use of Prayer Request Notebook for weekly requests.</p> <p>Twice weekly online Morning Prayer (Tuesday & Thursday)</p>			

Theme	Focus and Action	D	V	E
Growing disciples	<p>Teaching and Preaching from Scripture</p> <p>Home groups - Evening – joint with St Paul’s.</p> <p>Home Group – daytime.</p> <p>Knitting group; fellowship, support & prayer; weekly.</p> <p>Occasional “Discovery” and “Emmaus” nurture groups - as the opportunity arises.</p> <p>Encourage every member in their Mission & Ministry</p> <p>Encourage people to go to Christian Festivals and events.</p>			
Reaching New Generations	<p>Support our Children’s, Youth and Families’ Ministry Facilitator (CYF Facilitator) in her role with Doxey Youth Club and Doxey Kids @ the Hub.</p> <p>Hold Messy Events in Church with the Open the Book Drama Team.</p> <p>Actively develop links with those connected with Messy Church through the CYF Facilitator.</p> <p>Sunday Clubs – KFC & Crèche.</p> <p>Build on our links with the School through our CYF Facilitator and the Youth Net.</p> <p>Services in church.</p> <p>Explore re-establishing the Open the Book monthly assemblies.</p> <p>Family Fun events at the Church and the Hub.</p>			

Theme	Focus and Action	D	V	E
Transforming Community	<p>Support the running of our Youth Club and Doxey Kids @ the Hub.</p> <p>Partner with RBBC, The Youth Net and Signpost Centre to operate The Hub community centre within Doxey.</p> <p>Organising a Pop-up Food Bank at the Hub at the start of each holiday for needy families.</p> <p>Be involved with local organisations. Parish Council/ House of Bread/ Street Pastors etc</p> <p>Active participation in Annual Doxey Day.</p> <p>Social events involving our community, e.g., Coronation Tea Party.</p> <p>Doxey Friends – social event – Monthly</p> <p>Rambling Group.</p>			
Practising Generosity	<p>Care for each other</p> <p>Encourage giving of skills, time, and money.</p> <p>Mission Support, Prayer and Giving</p> <p>Hold Mission Giving Sunday.</p> <p>Support our link missionaries.</p> <p>Tearfund Sunday</p> <p>House of Bread – Collect and supply food and toiletries etc particularly at Harvest Time.</p> <p>Participating in the annual Christmas Shoebox appeal with St Paul’s Church.</p> <p>Consider a further Stafford Grammar School concert to raise funds to support Mission Organisations – (yearly).</p> <p>Offering the use of our building to Community, Deanery & Diocese as requested.</p>			

Theme	Focus and Action	D	V	E
Finance, admin and communication	<p>Communicate effectively with community & Church.</p> <p>Monthly Newsletter to all members by email or post as appropriate.</p> <p>Ensure safeguarding procedures are in place and effectively applied.</p> <p>Develop other required policies and procedures.</p> <p>Website – Update calendar of events / services</p> <p>Develop Facebook page.</p>			
Fabric Building etc	<p>Continue to maintain and improve the condition of the building.</p> <p>Hold occasional work-parties inside and outside.</p>			
Care for God's World Eco Church	<p>Continue to seek ways as an established Eco Church to improve our carbon footprint.</p> <p>Creating spaces for biodiversity within the church grounds.</p>			

Journeying together with Jesus,
for the community and with the community,
by

- *Discovering the heart of God*
- *Growing Disciples*
- *Reaching New Generations*
- *Transforming Community*
- *Practising Generosity*





Mission Action Plan

St Paul's Church, Stafford.

As agreed at PCC Meeting on 16/01/24

Introduction

Mission Action Plan – a table, which is to help us think about, and focus on, our Ministry and Mission - how we Worship and serve God in this place. This is a table which is to be updated and amended, as necessary, to help us in our Discipleship.

“D, V & E” – The key areas of focus within the Diocesan Direction of Travel – Discipleship, Vocation and Evangelism. Many sections on the MAP include all 3 – highlighted is the prime aspect for each section of the MAP.

Mission & Ministry	Focus and Action	D	V	E
Worship Discovering the heart of God	Continue to be a worshipping community 10.30am (Sundays) [Holy Communion, Morning Worship & All-Age], Special Services (e.g. around Easter) & as below.			
Discipleship Growth in faith	Maintain & develop each small group; Evening Home Group - (Joint with Doxey) Day time Home Group Prayer Meetings Reflective Prayer group Mother's Union Offer "Discovery" and "Emmaus" groups – as appropriate			

Mission & Ministry	Focus and Action	D	V	E
<p>Ministry with Children and young people</p> <p>Reaching New Generations with effective Children's and Young People's Work</p>	<p>Tots – Wed morning – term time</p> <p>Activity Sheets (Sundays at 10.30am)</p> <p>Support Children's, Youth and Families Ministry Facilitator (Lottie Backhouse)</p> <p>Messy Church once a month</p> <p>Ministry into St Paul's School</p> <p>Collective & Class Worship</p> <p>“Pupil Voice” & “Worship Council”</p> <p>Support RE co-ordinator</p> <p>Facilitate “Parents’ Network”</p> <p>Uniform Groups</p> <p>Maintain links and offer support</p> <p>Remembrance Day Parade</p> <p>Support The Youth Net in delivering Easter and Christmas Explorers</p>			
<p>Ministry with the over 55s</p> <p>Outreach for the Kingdom</p>	<p>Encourage continuing visiting</p> <p>Drakeford Court/ Compton Close/ Humphrey Court</p> <p>In conjunction with Stafford Baptists and Church Lane Church offer Easter and Christmas services to Humphrey Court and Christmas Service at Drakeford Court</p> <p>Home Communions</p> <p>Monthly HC service at St Joseph's Convent Nursing Home</p> <p>Coffee mornings/ afternoon teas in residences.</p>			

Mission & Ministry	Focus and Action	D	V	E
<p>Supporting each other as we serve God in the world</p> <p>Living as Christians in our everyday lives</p> <p>Linking & volunteering with other organisations</p> <p>Supporting other Mission & Charitable organisations</p>	<p>Preaching - Hold at least four 10.30am services with Mission Focus. Support in home groups</p> <p>Mission giving decisions</p> <p>Support - Shoeboxes – International Aid Trust Christian Aid, House of Bread, Christian Food Help, Children’s Society and Tearfund</p>			
<p>Making the most of Baptisms, Weddings and Funerals</p> <p>Making connections</p>	<p>Prayer</p> <p>Baptism Preparation</p> <p>Baptisms & follow up (e.g. Anniversary Cards)</p> <p>Funerals – Thanksgiving and memorial service</p> <p>Weddings – review follow-up</p>			
<p>Fundraising to cover cost of Mission & Ministry</p> <p>Good Stewardship</p>	<p>Autumn Fayre</p> <p>Rolling programme of at least 3 events per year</p>			

Mission & Ministry	Focus and Action	D	V	E
Stewardship and Discipleship Encouraging Discipleship	Have a service with Giving Focus each year.			
Prayer Chain	Continue to be active in prayer.			
Website and Communication Effective Communication & Welcome	Continue to develop new website. Update Facebook. Continue to develop ACNY			
Outreach into parish	See Mission & Ministry Priorities above. Plus Christmas card delivered to Parish. Coffee and Cake – last Friday of the month.			

Mission & Ministry	Focus and Action	D	V	E
Fabric Appropriate Maintenance of Building	Deal with outcome of Quinquennials. Regular maintenance and review of Church and Parish Room. Control of heating and electric usage.			
Internal refurbishment – “Re-ordering” Making St Paul’s more attractive	Data projection.			
Social activities Building the fellowship and involve “those on the edge.”	Plan occasional social activities.			
Safeguarding Safe and secure	Maintain Good Safeguarding Practice. DBSs renewed every three years. Ensure correct safeguarding training is completed by each member of the PCC.			

Mission & Ministry	Focus and Action	D	V	E
Pastoral Care Practicing generosity	Perform and encourage pastoral visits in pairs.			
Building links with Doxey Church Strength in Ministry together, sharing resources and offering distinctiveness	Develop & encourage links: Joint services: (e.g. Easter; “A quiet place”: “Gather”). Joint Evening Home Group, Discovery and Emmaus Groups. Yearly joint PCC			