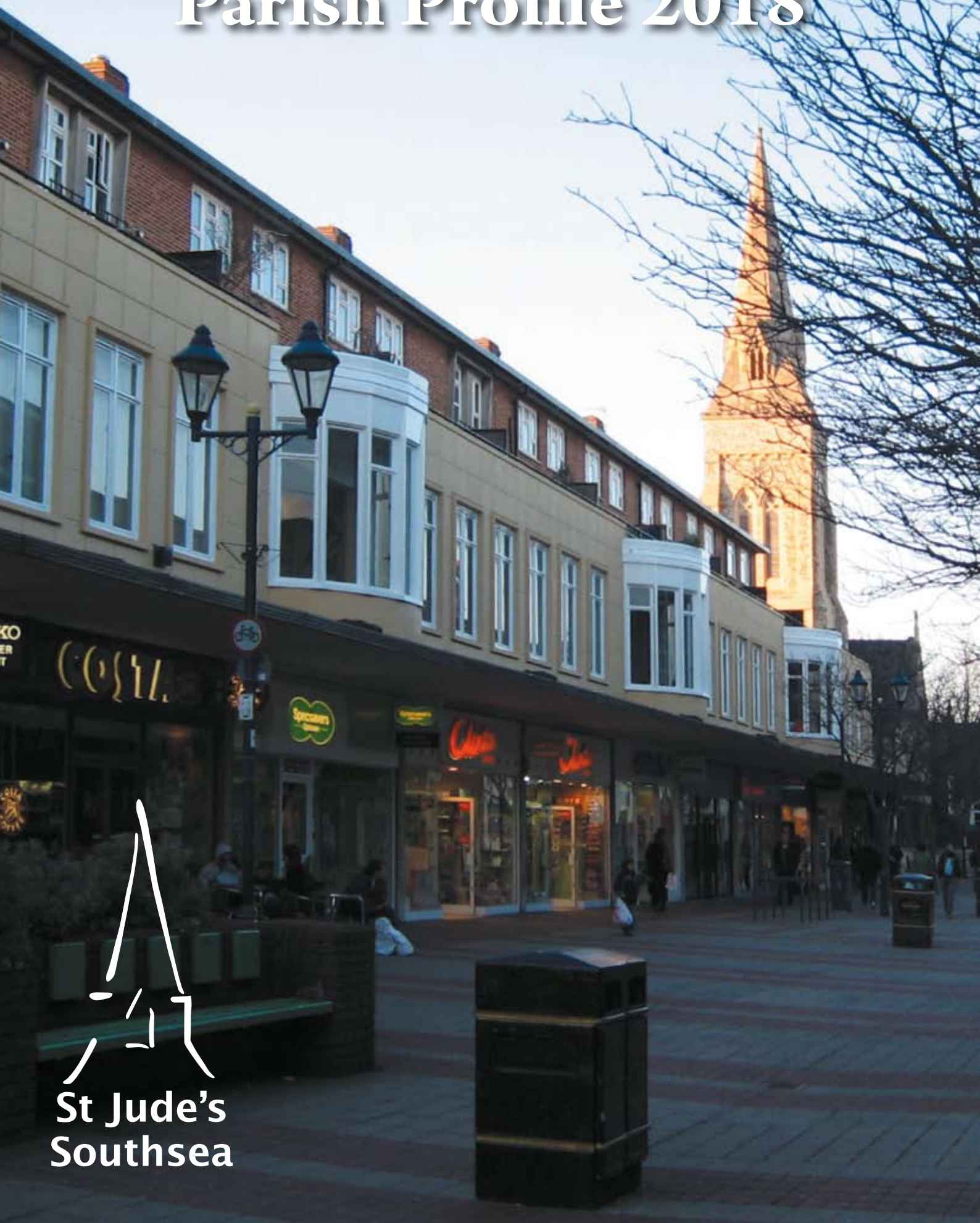


# St Jude's Church Southsea Parish Profile 2018



  
St Jude's  
Southsea

## INTRODUCTION

St Jude's parish church in Southsea, Portsmouth, is a lively evangelical church in an urban setting. We seek to make Christ known in our community through teaching and preaching, pastoral care, practical outreach and friendship.

## PORTSMOUTH - CITY BY THE SEA

Portsmouth is a large and vibrant city with a long and distinctive history. The current population is about 190,000. It is densely populated and sits mainly on an island – Portsea Island. Its strong maritime tradition is reflected in the presence of the Naval Base, formerly the Royal Dockyard. For most of the nineteenth and twentieth centuries the Royal Navy dominated the culture and economy of the city. It remains important; the Fleet Headquarters are now situated in Portsmouth. In the last thirty years, however, the city's reliance on the Navy has declined as new industries have grown, particularly in electronics and engineering, often with a Defence-related theme. In recent years the city has become known for major capital projects such as the Gunwharf Quays residential and retailing development and the Spinnaker Tower and for the growing reputation of its University.

Southsea is the seafront district of Portsmouth. It developed particularly in the latter part of the nineteenth century and the early years of the twentieth. Nowadays it is a large and busy residential and leisure area.

### St Jude's – in the heart of Southsea

St Jude's Parish is at the western end of Southsea. It has approximately 11,000 inhabitants. It borders the sea and contains open space, mixed residential accommodation and a pedestrian shopping area. It has established owner-occupied housing as well as a large number of houses in multiple-occupancy. Its population is diverse in age and wealth and is increased by student numbers during term-time. The number of people from ethnic minorities is also increasing.

The church building stands at one end of the shopping precinct, occupying a prominent place in the townscape. It is a Victorian building and the centrepiece of the residential development laid out by the architect Thomas Ellis Owen. In recent years it has undergone a major re-ordering project – with more ahead!

The congregation is drawn in part from the parish but many come from other areas of Southsea or from further afield in the city. There is quite a high turnover of people, reflecting movement in and out of the city, often for education and employment. There are 240 on the Electoral Roll, and we have an average Sunday worship attendance of 300+.

Our clergy team currently includes the Vicar & Curate with help from three retired ministers. Our staff team includes a Caretaker, a Book-keeper & Administrator, a Children, Youth & Family ministries Minister together with a Discipleship Year Student, and additional volunteer pastoral admin support.



## ST JUDE'S – LOOKING UP

### Where we stand

The church has a long evangelical tradition. We are probably best described as Open Evangelical although the congregation as a whole would contain perspectives from across the evangelical spectrum. Although in the past we have not tended to label ourselves as “charismatic”, we believe in the work and gifting of the Holy Spirit in people’s lives today and seek to be increasingly open to Him. We aim to encounter Christ in the power of the Spirit and to share God’s love with all. We seek to be biblically orthodox in theology and morality and to adopt the Christian Church’s traditional teaching, for instance in matters of human sexuality, applied with pastoral care and sensitivity in individual circumstances.

St Jude’s is committed to the ministry of women: our ministry team includes two female lay-readers and will shortly include a female curate.

### Our Worship and Services Pattern

Our Sunday worship reflects the diversity of our church membership. At 9.00 there is a liturgically traditional service attracting a congregation of 25 to 30 mainly older people.

The largest of our services is at 10.30 and is designed to be accessible to all, but especially to families. On most Sundays we teach children to the age of 14 in separate age-banded

groups after a period of shared family worship. The service is liturgically informal and includes a mixture of modern choruses and classic hymns, led by a worship band. The congregation currently numbers 230-270, including 50 to 60 children.

Our evening service at 6.30 is the most informal and more contemporary in music and style, seeking to draw younger people and students. Numbers are typically around 30.

There is Holy Communion once a month at 10.30 and 6.30 and on the other Sundays at 9.00. There is also a weekly Communion service on a Thursday morning at 10.00.

On five Sundays a year, we hold an invitation Sunday with a different pattern of services. At 8.00 there is BCP Holy Communion. At 10.30, “Funday Sunday” includes breakfast and children’s action stations followed by a fast-moving all-age presentation of the gospel. At 16.00 “Come & See” presents the gospel within a more traditional musical format.

### Life Groups and Prayer life

Approximately 130 members of the congregation are part of a Life Group, meeting weekly for bible study, prayer and to support one another and the Church’s activities. There are a number of small, committed prayer groups, which we are seeking to develop under the banner: ‘Prayer Central’.



## ST JUDE'S – LOOKING OUT

### St Margaret’s

In October 2017, responding to a request from the Diocese, St Jude’s launched a new outreach congregation in the neighbouring parish of St Margaret’s. Within 6 months, the Sunday 4pm congregation has grown to 60 and now fills the church hall. A project to reclaim the church building is planned for 2018-19, allowing further growth. The bishop has invited St Jude’s to consider becoming a Resource Church – so we need to ready ourselves to plant again.

### Outreach

Central to our vision and purpose is sharing the Gospel with all. For many years we have run several Alpha courses a year - an effective means of drawing into faith those who are on the fringe or outside church life.

“Friday Fridge”, a late Friday night café, offers a safe and warm welcome to those on the street late at night - a chance to experience Christian faith and spirituality in action. The “Open Church Project”, an inter-church winter accommodation scheme for the homeless spearheaded by St Jude’s, was successfully launched this year.

### Welcome Team

The opening of our wonderful entrance way increased five-fold the number of passers-by dropping into St Jude’s to look round, to chat and pray. Each is greeted by our reception team who ensure visitors and regular users alike receive a warm welcome – and a prayer if desired.

### Healing on the Streets

Of course it’s not enough to wait in church for passers-by to drop in. Members of St Jude’s, with friends from other churches, offer healing prayer in the precinct to any passing by who wish to receive it.

## Children and Young People

Our aim is to integrate children and young people fully into the life and experience of the Church. Work amongst children has been an acknowledged strength in church life for many years. Beyond crèche, Sunday children's groups cater for up to 60 children between the ages of 3 and 14, providing Christian teaching in a stimulating environment. As well as a toddler group, there are holiday clubs and mid-week evening groups offering younger and older teens the opportunity for fun, friendship, and discipleship. With an energetic and committed leadership strengthened by our 'discipleship year' programme, there are good opportunities for our teenagers to engage with and grow in faith and leadership.

## Schools Work

We have close links with St Jude's primary school, a Church of England Voluntary Controlled School. Although now situated in the neighbouring Cathedral parish, the PCC appoints a Foundation Governor and the Vicar is an ex-officio Governor. We lead a weekly collective worship and after-school club, and regular prayer-space events. We also run a Nursery School within the parish. It is owned and operated by the PCC which appoints its leadership and management. The Nursery School has grown rapidly over the last few years, and now has approximately 120 on its roll and is open 51 weeks a year. The school received an outstanding Church Inspection, and the Nursery a good OFSTED report. Both represent an excellent outreach opportunity.

## Older People

There are many retired people in Southsea and senior citizens are important in church life. There are a number of daytime activities which are particularly suited to them, including the Monday Fellowship which has an overtly

Christian basis, Thursday Club which reaches out across a wider community spectrum, two daytime house groups, and a Senior Citizens Holiday Club. Many older members also take an active part in wider church activities ranging from Friday Fridge to table tennis and participation in prayer and evening house groups.

## Overseas Mission

Supporting overseas mission in prayer and other practical ways is very important to us. We have link mission partners with a number of overseas mission organisations. A tenth of the church's unrestricted income is set aside for giving to these and other organisations. We have also been able to support a number of church members working for a few weeks or months with organisations in many different parts of the world.

## Justice

Recognition of God's concern for the world and the people He created has alerted us to a range of challenging issues including global poverty, trade justice and the environment. Seeking what God requires of us has led us to encourage those taking practical action to pursue God's priorities, including support for the work of TEAR Fund, Christian Aid and Stop the Traffik.

## The Wider Church Community

We enjoy good relationships with the wider Diocese, which is not predominantly of Evangelical churchmanship. The vicar is an Associate Area Dean for the city and we are linked in a cluster with the four other parishes in Southsea and Milton. We have a particularly close relationship with our neighbouring parish, St Simon's, with whom we are in a Mission Partnership together. We also have strong relationships with non-Anglican churches in Southsea and Portsmouth.



## ST JUDE'S – LOOKING FORWARD

### Our Vision

Our vision is to see "Jesus' love transforming lives - from the heart of Southsea." Our mission is shaped around 5 key priority areas of Christian life: Worship, Fellowship, Discipleship, Ministry and Witness. Guided by that, we have set ourselves five Vision Goals:-

1. Being a contemporary house of prayer
2. Being a home where all can flourish
3. Following Jesus deeper and further
4. Meeting significant local needs
5. Multiplying Disciples, congregations and churches

We have already expressed each of those goals in exciting

initiatives for 2017 – and look forward to new ways of seeing Jesus' love at work, growing St Jude's both numerically and in its impact in Southsea.

### Our Building

In the 160 years since St Jude's was founded, the fabric of the building has been continually decaying, requiring periodic major structural work. Facilities were badly designed and showing their age. Following our vision a decade ago to become a 'Church without walls', we began an ambitious reordering project to create a modern and flexible base for the life of St Jude's. The first phase - a bold new entrance way and reception, a day chapel, the redevelopment of kitchen, toilets and offices and a new youth hall - was completed in 2010. Phase two, including a first floor worship area, is still to come!

## Our Leadership

One of our key leadership principles is that the ministry of St Jude's is first and foremost the ministry of the congregation – and that we cannot grow without growing new leaders. It is therefore the core task of the staff and leadership team to be identifying, training and releasing new leaders. "Never do anything alone which you can do with someone else!" Leaders within St Jude's at every level therefore need to be looking out for those who can join them in what they do and to be building teams to whom they can pass on their ministries.

We are always looking for those who can join the staff and leadership team in shaping and developing our ministry, under God, as we seek to be faithful to our calling to see *"Jesus' love transforming lives – from the heart of Southsea."*

### **The church and leadership team have the following values and commitments:-**

#### **Worship**

- the centrality of Christ's work and an openness to the leading of the Holy Spirit;
- the authority of Scripture in all matters of faith and conduct, and an emphasis on prayer as the starting point of our life together;
- wholeheartedness in our self-offering to God.

#### **Fellowship**

- that we should each care for others and allow ourselves to be cared for;
- the significance of hospitality and small groups in developing and strengthening the congregation and individuals;
- that children are right at the heart of and an essential part of our life and ministry.

#### **Discipleship**

- that gospel truth has to be applied to the many challenges of the contemporary world in a practical and relevant way;
- a readiness to be accountable to one-another – which happens best in small groups;

- as an Anglican church, rooted in Anglican history and identity, to be in fellowship and accountability to the wider Diocese.

#### **Ministry**

- generosity in sharing with others the blessings we have received – so that we are both equipping our own members and resourcing other congregations for God's work;
- the priority of recognising and developing the gifts of every member of the congregation, and of drawing them into teams for ministry;
- the importance of identifying, shaping and releasing new leaders for St Jude's and the wider church.

#### **Witness**

- a longing to share our experience of God with those who don't yet know Christ and to see our church grow in numbers and depth of impact on our wider community;
- a readiness to take risks, and to change whatever is necessary to reach out to contemporary society;
- a commitment to excellence as a witness to the glory of God – whilst avoiding rigid perfectionism which cannot cope with a little chaos!

### **In new members of the leadership team, we look for:-**

- dependency upon God in prayer;
- honesty and integrity;
- a commitment to reaching those outside the church and building the community of St Jude's;
- a readiness to work in partnership and to value the contribution and oversight of other members of the team – unafraid of intimacy and accountability;
- an encouraging attitude, together with general pastoral awareness and skills;
- the ability to communicate well and to motivate others.

**Enquiries concerning ministry leadership should be directed to the Vicar  
St Jude's Church, Kent Road, Southsea Hants PO5 3EL  
email: [vicar@stjudes-southsea.org.uk](mailto:vicar@stjudes-southsea.org.uk)  
website: [www.stjudes-southsea.org.uk](http://www.stjudes-southsea.org.uk)**





# **St Jude's Southsea**

St Jude's Church, Kent Road, Southsea, Hants PO5 3EL

Telephone: 023 9275 0442

Website: [www.stjudes-southsea.org.uk](http://www.stjudes-southsea.org.uk)

Email: [office@stjudes-southsea.org.uk](mailto:office@stjudes-southsea.org.uk)