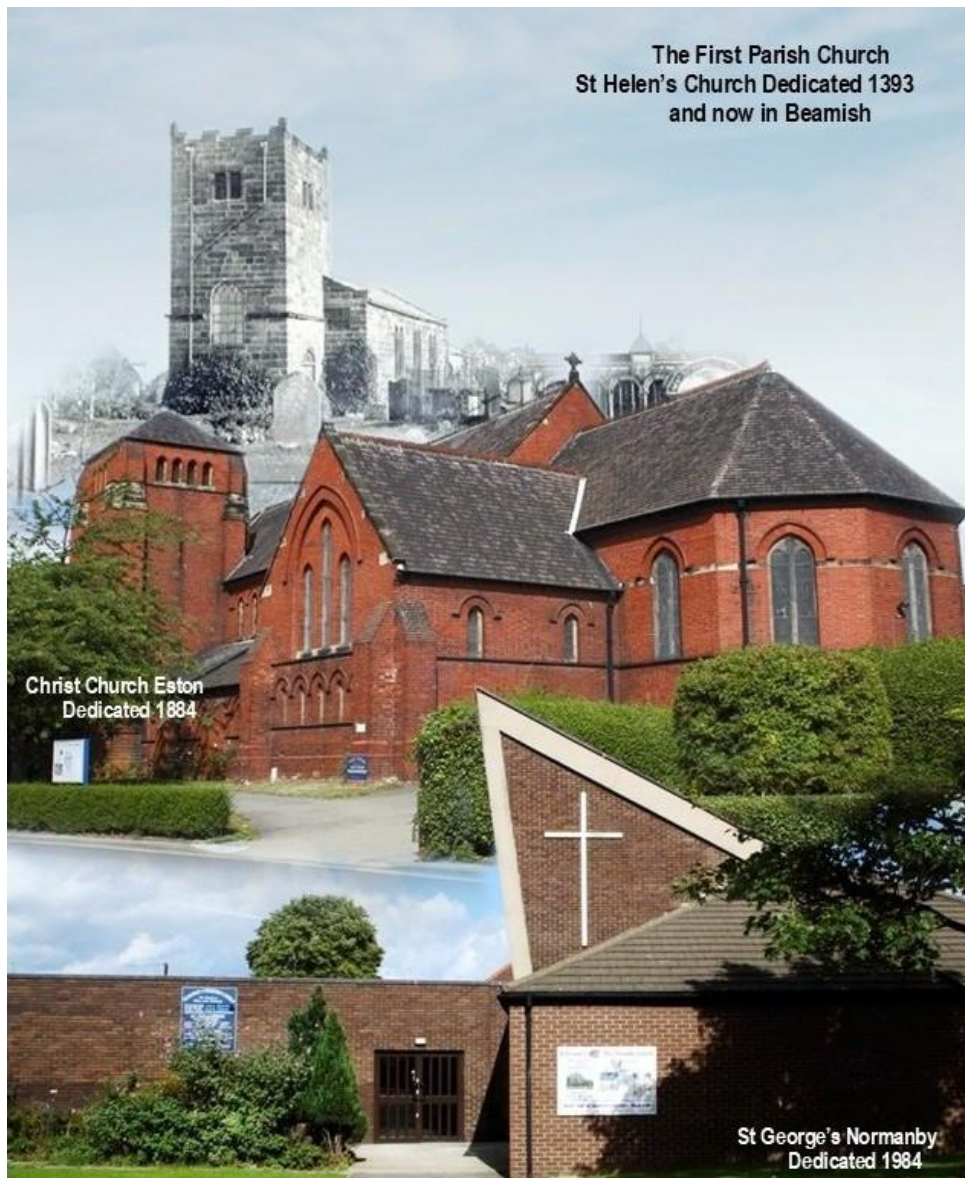


Parish of Eston with Normanby



CHRIST CHURCH
& SAINT GEORGE'S



PARISH PROFILE

An introduction from Barry, the Bishop of Whitby

I am delighted you are exploring applying for to be Priest-in-Charge of Christ Church, Eston and St George's Church, Normanby, serving the community in the north east of Middlesbrough. Be assured of my prayers and those of Archdeacon Amanda and our colleagues as you do.

Middlesbrough is mostly a relatively new town, whose growth and identity was largely forged by the discovery of iron stone in the Eston Hills in the mid-19th century. The iron rush that followed saw people coming from far and wide to Middlesbrough, and Middlesbrough responsible for construction of iconic sights across the world – the Sydney Harbour Bridge was designed in Middlesbrough, built by people from Middlesbrough and mostly made from materials mined in the benefice!



The demise of the iron, steel and latter chemical industry has left a deficit - financially, of aspiration and of hope – the cost of which is easy to see and the churches are at the forefront of helping address, especially with the message of Jesus to be agents of hope and that all are called and needed. Alongside the challenges though a new narrative is also forming: new green industries are thriving, jobs are being created, close by to the benefice is the largest brownfield site in Europe, recently cleared and on which construction is now at a pace, Middlesbrough are top of the Championship (at time of writing!) and the Turner Prize is here in 2026.

Christ Church and St George's story is interwoven with all of this. They are beautiful, growing church communities, who don't just have good links with the community, they are the community. Full of faith, it was a joy to baptise by full immersion and confirm a host of candidates at Christ Church just a few months ago, hearing amazing stories of God at work as people have come to and grown in faith. They are informal churches, largely in the charismatic evangelical tradition but with a diversity of styles to connect with all in the community. One of the larger worshipping communities in the diocese, there is considerable and capable lay leadership, including recently six new Community Ministers.

Across Middlesbrough this vacancy comes at an exciting time, as we are in the middle of discerning how the Spirit of God is calling us over the coming years. We seek a priest who will be a key part of this. As a diocese, and with the encouragement of the national church, we intend later in 2026 to seek significant new investment from the national church to support these plans.

Eston and Normanby join with the parishes of the Diocese in seeking to invite the 1.5 million parishioners we serve to know the joy of Living Christ's Story. This means each church focusing on what it means to:

- **Become more like Christ** – knowing we are God's beloved children, that Jesus came to seek, serve and save, and actively participating in worship and witness Monday to Sunday;

- **Reach people we currently don't** - living and telling the story of God with humility and confidence, inviting our classmates and colleagues, neighbours and friends to know love, purpose and hope;
- **Grow as churches of missionary disciples which are younger and more diverse** – knowing we are sent to every place and person to which we go, individually and as a 'community of the sent' – a place where everyone is known and needed, honoured and participating.

May you know the surrounding and upholding of the Spirit of God as you discern,



For an informal conversation about this post, contact the Bishop of Whitby, Barry Hill (bishopofwhitby@yorkdiocese.org or 01642 593273) or the Archdeacon of Cleveland, Amanda Bloor (adcl@yorkdiocese.org or 01642 706095).

This post is open to Anglican priests who are eligible to work in the UK, subject to satisfactory episcopal reference and enhanced DBS.

Applications to Jacqui Gunter, Jacqui.Gunter@yorkdiocese.org

Welcome from the Area Dean

Middlesbrough Deanery is the northern most of the six deaneries in the archdeaconry of Cleveland. Just minutes away from the North Yorkshire Moors and the beautiful sandy beaches of the northeast coast.

Due to several retirements in the same 6-month period we will have 5 vacancies in Middlesbrough Deanery in the autumn of this year. We are making the most of this opportunity and will rethink what ministry should look like across the deanery in the 21st century. We will need to have 'porous boundaries' in the parishes and a generous spirit as we navigate the changes ahead. We are looking forward to working with people who will bring and embrace change and work with the plan to fill all the vacancies quickly. So join us in that discernment.

We are a deanery of many church traditions. From Society through liberal catholic and evangelical. As chapter we are looking forward to welcoming colleagues who will be as committed to working together with us when we can. To share our resources and our experience to build up all our churches as we encourage our congregations to 'live Christ's story'. Our unity can be seen in the way we are each helping to cover these vacancies and others in the recent past.

Churches across Teesside have been working together for many years, culminating in Festival Teesside in 2024. We meet for a church leaders lunch each half term, and prayer weekly during term time.

The Holy Spirit is moving on Teesside, are you being called to join us in spreading the gospel in Middlesbrough?

Parish Profile

	Page
An introduction from Barry, the Bishop of Whitby	2
Welcome from the Area Dean	3
Welcome from the Parish of Eston with Normanby!	5
Who are we?	5
Some helpful background	7
- Christ Church	8
- St George's	9
Our services	10
Our People	12
Meet the Leadership Team	12
What our Church is like	13
Our strengths and weaknesses	14
Living Christ's Story	18
- Becoming More Like Christ	18
- Reaching People We Currently Don't	18
- Growing Missionary Disciples	19
- Finance and Giving	19
Who we are seeking	20
A Year in Our Parish - 2024-5 reports from our groups	21
The Rectory	26
Appendix 1 - Rectory Quinquennial	29
Appendix 2 - Rectory EPC	33

Welcome from the Parish of Eston with Normanby!

Welcome to Eston with Normanby and thank you for discerning whether God may be calling you to minister here.

Please be assured of our prayers as you seek His guidance.

We are a welcoming, vibrant and evangelical Parish with two churches and three congregations. Across the Parish, we have seen growth since the pandemic, with a small increase in numbers at services but a huge increase in those attending 'outreach activities' who consider themselves part of the church.

Christ Church, which recently celebrated 140 years of ministry in the community, has a strong civic presence, including strong ties to the Remembrance Day Committee and a successful programme of community outreach.

St George's, which will celebrate 60 years of Ministry in 2026, is a more modern flexible building which has allowed the development of our successful pre-school group ministry and the busiest Foodbank centre in Redcar and Cleveland.

Our 3rd 'congregation is our Midweek service which has been redeveloped to be church for those who cannot attend on Sundays.

However, we consider ourselves a single, united Parish and it is a joy to meet together regularly for joint services, alternating between buildings and to support one another in events such as the Table Top Sale and Family Fun Day.

We recently asked church members how they would describe our churches and the common themes that came through over and over include 'welcoming', 'family', caring', 'supportive' 'faithful' and 'encouraging', summed up in this comment: "A wonderful church, filled with a great and loving community of believers. Supportive and encouraging, always willing to listen to one another's problems."

And it doesn't stop at our church doors - we are passionate about reaching out into the community, too, through regular activities like the coffee mornings which attract people from the nearby care home and missional events like productions by a Christian Theatre Company. There's a lot going on in our churches!

We hope that this profile will give you an insight into who we are and we look forward to seeing where God may be leading you.

Who are we?

One Parish two churches, three congregations – diverse and yet unified.

We are a lively Parish with a heart to serve Jesus, serve each other and serve our community. Christ Church has long been seen as a Beacon and St George's an Open Door.

We are described as charismatic evangelical in our approach to Sunday and midweek worship but having two churches allows us to offer diversity in our service styles to cater to different tastes and opportunities, which we try to use to good effect!

Christ Church offers a more liturgical format using services from Common Worship. The location and the building are well suited to provide a civic presence in the Community. That civic role ranges from the annual Remembrance Day and 70th anniversary of VE Day celebrations and a role in the community mourning following the death of the late Queen to our annual Carol Service on Christmas Eve and the Family Fun Day we ran in June.

An unexpected spin-off has been the reaction to the refurbishment of the Hall as a community resource. Following promotion by a local councillor, the Hall is now home to a dance school and a Fitness class.

St George's offers a more informal style with minimal liturgy. The flexibility of the building offers opportunities for creative use of space ranging from café style services and our weekly Carer and toddler group to a Messy Mondays Holiday Club, Christian theatre performances and 2 hugely successful No More Knives events in partnership with the Message Trust which brought in nearly 400 young people to enjoy Gospel rap music and a Gospel message (photo right), to which over half responded by making a commitment to Jesus.



Unusually, St George's also has a Baptistery. It has been a joy to see 3 services of Baptism by full immersion in the last 3 years. We have also blessed other Churches by loaning out the Baptistery so that they, too, can baptise adults by full immersion into their church families.

The midweek service uses liturgy but in a more intimate, reflective setting which appeals both to those who cannot attend on Sundays and those who need an oasis of peace in a busy week.

In addition to the regular Sunday services, we also have regular All Age Worship, principally for Baptisms and special festivals such as Harvest and Christmas, at which we love to host the Brownies and families from Big Ted and our 2024 Messy Mondays Holiday Club.

Our desire to serve Jesus doesn't end when the services end. We have an active programme of outreach and in the last year we have held:

- 51 coffee mornings at Christ Church and 51 Coffee Mornings with Foodbank at St George's.
- 39 meetings of our Big Ted Carer and Toddler Group
- 1 No more Knives event and 6 follow up sessions.
- A Family Fun Day at Christ Church (see photo)
- A Christmas Tea for the over 70s (not just our church regulars but also those who struggle to get here every Sunday).
- Fundraising evenings for the Serving Africa Mission and for a young man going to Cambodia on a volunteer mission trip.



And we have another is planned in the New Year to support a member of our Church Family going to Ghana to work with the Serving Africa Mission.

Some helpful background

Our Parish has a population of 18322, situated between the stunning Cleveland Hills (part of which fall within our Parish boundaries), the river Tees to the north and beautiful coastline to the east.

We have a deprivation ranking of 1347 out of 12382 (where 1 is the most deprived).

There are big contrasts across the Parish, with very affluent housing bordering areas of significant deprivation, and the Parish is itself bordered by some of the most deprived Parishes in the Country (Grangetown, South Bank and Brambles Farm).

The decline of the manufacturing industry on which the town was founded - particularly the Redcar steel works which was closed in 2015 - have led to high levels of poverty and deficit of aspiration.

For example, 1 in 5 children and pensioners in the Parish live in poverty and 1 in 4 have no qualifications. We see the impact of this level of poverty at our weekly Foodbank, where we are now the busiest in the Borough.

The proximity to the heavy industry and the unhealthy lifestyles associated with poverty have led to life expectancy of only 77 years for men and 81 for women, well below the national average.

There is a perception that the area has a high crime rate, particularly for ASB but Police UK Statistics show that Redcar & Cleveland's overall crime rates are among the lowest in the Tees Valley and about average for similar areas.

Christ Church



Christ Church, Eston, was founded in 1884 to replace the former Parish Church of St Helen's, which dated back to 1393 and had become too small to accommodate the population growth which followed the discovery of Ironstone in the Eston Hills.

We value its proud heritage and are pleased that it remains close to the hearts of the Eston Community. Christ Church

plays an active part in the civic life of Eston as well as the worship of the Parish. In 2024, the service to commemorate the 140th anniversary of Christ Church was supported by the Archbishop of York, the Lord Lieutenant of North Yorkshire, our MP, local councillors and members of the local community.



A vicarage on the opposite side of the road was built in 1898, and the parish incumbents were resident there until 1982 when a new vicarage was built adjacent to the Church. A Church Hall together with subsidiary rooms was added to Christ Church in 1908.

In 2023/4 an extensive refurbishment of the Church Hall has taken place, including a new kitchen, in order to open it up for community use, and a dance school has already made its home there, along with a weekly fitness class.

In general the building is in good repair, although there are several items requiring attention:

- a) Repairs are needed to the large window at the back of the church due to failure of the lead beading and solder joints.
- b) The Main Church Roof has failing and dislodged slates, bedding mortar missing, and copings needing repointed.
- c) The Heating system is over 25 years old, and the units are now obsolete and service kits are no longer obtainable. 3 heaters are isolated due to not having adequate flu systems.

- d) Redecoration of the church ceilings is urgently needed as they are in very poor condition.

St George's



St George's was founded in 1966 to serve the housing estates on the western side of the Parish. It became the second Parish Church in 1984 and was subsequently extended in 1985 and again in 1989/90 due to growing demand. It is a more flexible design which lends itself to events such as theatre productions and a weekly pre-school group.

In 2008 the hall was remodelled to create a larger kitchen and relocate the Parish Office from the annexe into a more accessible location in the church entrance. It is well used by Guides, Brownies and a Foodbank.

The church is in a good state of repair, although there are 2 major issues which require attention:

- a) The tall windows on the North side of the building leak and allow water to flood in during heavy rainstorms, causing regular damage to the Prayer Room.
- b) The heating system is not fit for purpose due to the failure of several of the fans on the night storage heaters and the building remains so cold that in winter people attending Big Ted have to take children into the hall to get warm. Many of the comments received in the consultation exercise mentioned the coldness of the building.



However, in consultation with the Diocesan Heating Engineer, we have put together a fully-costed project plan to install a new heating system and (at the time of writing) are awaiting Faculty approval from the DAC.

Our services

Our services are intended to bring together the church family in a safe, welcoming environment that nurtures faith, encourages participation and inspires us to grow as disciples of Jesus.

Services reflect our belief that:

- the essence of the Gospel consists of the doctrine of salvation by grace solely through faith in Jesus, and his atonement paid for by his cross.
- the Bible is God's revelation to the world, and we desire to spread this Christian message throughout the parish.
- that the gifts of the Spirit are available to us to guide and enable us to demonstrate and advance God's kingdom in this area.

We do not traditionally robe for services, except Occasional Offices.

We meet on Sundays at 10am in both Christ Church and St George's and on Wednesdays at 10am in Christ Church.

Where we use Liturgy, we follow the Common Worship format. All words, for both songs and Liturgy, are projected onto screens in order that everyone, including visitors and newcomers can follow what is happening.

All services include contemporary worship music and we strive to achieve a good balance of maintaining the familiar with keeping up to date with new songs. We are blessed to have live music at both Sunday services.

At St George's there is a Sunday School during most services and both Churches hold regular All Age Worship services to encourage children to be actively involved in the service.



At Christmas, the Parish Carol Service takes place in Christ Church on Christmas Eve. It is actively supported by the local community, our MP and local councillors.

In 2025 we have celebrated:-

- The Baptisms of 9 adults (4 in St George's and 5 at a service on the beach), and 10 children (*there are already 2 more currently in the diary*) and the Reaffirmation of Baptismal vows by a further 2 adults.



Baptism candidates July 2025

- 2 weddings.

Wedding of Michael and Zoe (August 2025 - used with permission)



- 1 Confirmation service for 19 candidates (of whom 11 were from our 2 churches, and 7 from The Brambles Farm, Thorntree & Netherfields Initiative and 1 from St John's South Bank)
- 15 funerals in church and 5 at the Crematorium
- A Sanctuary Day led by ReSource and attended by 30 members of our own congregation plus guests from other churches.

Our People

Our regular worshipping Community stood at 131 across both churches in January 2025, of whom 45 worship at Christ Church and 86 at St George's. Nearly half (45%) are over 70, but there are encouraging signs of growth in the numbers of younger joining during the last year. Average Sunday attendances are 43 at Christ Church and 62 at St George's.

A large proportion of them are active in one or more roles within the church, from serving on coffee or welcoming teams to leading worship and small groups. We are aware, however, that the aging profile of church members is impacting on the numbers of volunteers available and some ministries are struggling.

Meet the Leadership Team

We have a very strong, skilled leadership team that lead the church through an extended period without a minister from September 2019 to September 2021 and subsequently supported the Incumbent in such a way as to free him to undertake wide-ranging roles within the Deanery and the wider Diocese. This was acknowledged in his letter to the Parish announcing his appointment as Canon of Husthwaite.: 'This is recognition for all the work that you all do in the parish, in all the ways you serve, and by letting me be involved in the wider diocese through being Area Dean, Assistant Diocesan Director of Ordinands (ADDO), and being part of Diocesan Synod, and across the wider church as a trustee of Jesus Shaped People. It brings the parish a profile which has been recognised. And for that I thank you.' (Rev Graham Potter).

- 4 wardens,
- 2 Authorised Lay Ministers,
- Parish Administrator
- Worship Team Leader, the Musical Director and a worship team that provides live music in both churches and at weddings,
- 6 Community Ministers, licensed through the Mustard Seed's Stepping Up Programme to 'grow disciples in places where life is tough'.
- Preaching Team of 6,
- Leaders of 6 Small groups (5 former house groups and the Ladies' Fellowship)
- Big Ted Team
- FoodBank team
- Table Top Sale Team



What our Church is like

We asked our congregations how they would describe our churches: **“A wonderful church, filled with a great and loving community of believers. Supportive and encouraging, always willing to listen to one another’s problems.”**

WELCOMING

‘Everyone is made very welcome’
‘A very welcoming, warm place’
‘Smiles and laughter all morning’
‘Very welcoming, very accepting and very supporting’
‘A welcoming church with a passion for church unity and the community.’

FRIENDLY

‘My family’
‘HOME’
‘Friendly - love it!’
‘Inclusive’
‘Friendship, loving caring, helpful’

LOVING AND CARING

‘Always ready to help each other’
‘inclusive, gently encouraging, kind’
‘A caring church’
‘Generous and supportive’
‘Very good in bringing people together’

PEACE AND ACCEPTANCE

‘A place of peace and being accepted by all’
‘Peace, perfect peace’
‘Peaceful and calmness’
‘It’s a happy church’

FAITHFUL TO THE BIBLE

‘We are built on the truth of the Bible’
‘A great place to grow in faith’
‘Faithful to the word of God’
‘We can feel the presence of God’
‘Spiritually sound’.

AND FINALLY

‘Amazing
Thriving’
‘Relaxed’
‘A light to our community’

Our strengths and weaknesses

We believe we have a lot to offer you.

We now have 6 Community Ministers who were licenced under the Diocese's Stepping Up Programme (which runs under the umbrella of Mustard Seed). Each is responsible for carrying out a community ministry which contributes to the life of the church and aims to reach those who do not yet know Jesus:

- Bereavement visiting
- Men's Group
- Prayer Spaces
- Garden group (in development)
- Befriending
- Preaching

We have a strong commitment to outreach and a regular programme of events, including:

- Coffee Mornings at Christ Church and St George's
- Foodbank
- Knit and Natter group at Christ Church
- Table Top Sales at Christ Church with a heart for service and not just fundraising.
- Big Ted – our parent/carers and toddlers group which we are told is now one of the best regarded in the area
- Partnership with the Message Trust has delivered two very successful youth events - attended by nearly 400 young people, over half of whom made a commitment to Jesus - and a 3-week cage football outreach programme.
- We have good links with our local Schools. All 3 primary schools come to Church during the year for festivals such as Christmas Carol concerts, and there are ad hoc invitations to go into the schools to lead events.
- A monthly Men's group which brings together Christians from our Churches to spend leisure time with other men who do not attend any church. Several of the group attended the Teesside Festival's Men's BBQ in June 2024, and more recently went to the Cedarwood Trust weekend camp in North Yorkshire last July.



It has been immensely encouraging to see growth in the numbers of new people walking through the doors wanting to know more about Jesus and/or the churches.

People are one of our greatest strengths. We have -

- A Preaching Team of 6.
- 2 Licensed Lay Ministers.
- As already noted, 6 Community Ministers licensed under the Diocesan Mustard Seed's Stepping Up Programme to 'Grow Disciples in places where life is tough'.
- Leaders of 5 Small Groups and a Ladies' Fellowship Group.
- An Authorised Lay Minister who carries out Parish Visiting.
- A committed and effective PCC.
- A Parish Administrator.
- Foodbank team – we have a Foodbank Team Leader and Deputy team leader, welcomers who meet with the clients, kitchen staff and food packers.
- Table Top team at Christ Church who not only raise funds for the Church but have made the church a welcoming place for members of the Community to call in for bargains and (more importantly) friendship.



We are committed to Safeguarding and have effective processes in place. There is a team comprising the Parish Safeguarding Officer, an Assistant Parish Safeguarding Officer and admin support to ensure that Safeguarding is embedded in the culture and life of all church activities and that all necessary checks and training are undertaken.

Communication is well developed, with written, electronic and face to face media as appropriate. The weekly notice sheet is supplemented by emails, the web site and Facebook.

Relationships are another strength:

- As noted already, we have good relationships with our Schools
- We have developed good working relationships with local Funeral Directors, and one Funeral Service held a Christmas service in Christ Church last year.
- We have strong links with other Church ministers in TS6, and actively support the group by hosting meetings.
- Our Ladies' Fellowship have built strong links with their counterparts in other churches and host an annual Unity Service and take their turn hosting the local World Day of Prayer service.

- We have good working relationships with local councillors and our Member of Parliament, including (but not limited to) taking part on the annual Carol Service.
- We have developed a strong and well-respected civic role, which includes working with the Remembrance Committee, a key role in the Remembrance Day Service at the Cenotaph and leading the service at the War Graves.



We are blessed to have live worship at both churches led by our Worship Teams; a Worship Leader and a Musical Director ensure that the worship offering is the very best we can deliver. The groups regularly combine their talents and come together as a unified group for weddings and ad hoc services such as the Deanery Advent Carol Service, Unity Service and World Day or prayer as well as joint services of St George's and Christ Church.

We have an excellent relationship with the Eston Remembrance Committee, who have asked to contribute a few words to the Profile:

"The previous Rector took a proactive approach to his role and has built a strong rapport with the local community, for whom Remembrance holds great significance. He was an active and valued member of the Eston Remembrance Committee (ERC), and it is hoped that the new Rector would continue to be a valuable member of the Remembrance Committee."

His main role was leading the annual Remembrance Parade Service on Remembrance Sunday in Eston square. The Rector also supported other commemorative events, such as VE Day and VJ Day anniversaries. Opening the church for the VE Day anniversary was much appreciated by the community, and included, bell ringing and the singing of I Vow to Thee, My Country. Additionally, on the Saturday of Remembrance Weekend, the Rector leads a service at the War Graves in the local cemetery, supported by local emergency services, councillors, community groups, and members of the community."

And finally, we also have two church halls which offer a valuable community resource. St George's is used by Brownies and Guide Groups and lends itself well to children's parties. Christ Church was recently refurbished and is now home to a Dance School and weekly Fitness Group . It is a real delight to be able to use our resources to bless the community we serve.

Unsurprisingly, there are also weakness and those are areas in which we would really value your help and support!

- Communication - while we are very strong in some areas of communication, there are weaknesses, particularly around information-sharing.
- Age profile: we are still very age top-heavy and the problem increases year on year. Although we have seen growth starting in younger adults, we have very few children - despite a thriving toddler group – or teenagers, and most adults are over 60.
- There are too few people doing too many jobs and we struggle to recruit volunteers to replace those who step down.
- Our youth work has collapsed because we do not have the leaders to run them. Our pre-school group is thriving but we no longer have any youth groups for school-age children (although the PCC at its meeting in September agreed to partner with St Cuthbert's Marton to fund a youth work post through Blank Canvas). Sunday school is also struggling due to lack of children attending services.
- Following the loss of many of our faithful members during covid, the urgent need was to rebuild our church congregations, particularly at Christ Church, but as a result there has necessarily been less focus on the welfare of existing members. This has been compounded by the retirement of our Parish Visitor. We recognise that it will be a challenge to continue to work for growth while more effectively pastoring the 'regulars' but we are up for that challenge and would welcome help and support in moving forward.
- We are very poor at inviting people to missional events like Alpha. Even with professionally-produced invitations, members seem fearful of actually inviting their families and friends to events.
- We recognise that we are also not good at discipling new Christians. We are working to improve on this and recently held a successful 'Newcomers' lunch in an effort to improve and we would welcome ideas and practical support to more effectively embed new starters and help them to grow in their faith.
- Succession training is a contributory factor to the loss of our youth provision but affects the wider church life too. We do not have younger people able and willing to take on leadership roles when older leaders need to step down. We would



welcome help in encouraging and mentoring the younger people we do have to feel confident and want to take the baton of leadership.

- The two parish churches operated under a team ministry until around 20 years ago and each effectively regarded themselves as almost independent. When the whole parish became the responsibility of the Rector there were, unsurprisingly, perceptions of unfairness around sharing of the Rector's time and allocation of resources (both financial and human, for example availability of musicians).

Covid19 brought about a step change in the sense of unity between the churches and a welcome willingness to work together and support one another. However, we recognise that - although now small in number - there are still some who (for historic reasons) do not attend the 'other church' or feel that 'they' get more of the parish's resources or the Rector's time. We would welcome your help in strengthening the unity that underpins our churches while building bridges where some residual differences still exist

Living Christ's Story

Our churches are committed to Living out Christ's story in our church life and our individual lives:

Becoming More Like Christ

We have followed the Jesus Shaped People and Spirit Filled Church programmes in our worship and small study groups, and the Jesus Shaped People groups became the springboard for restarting home groups (the majority of which have continued to meet in church!) after Covid led to meetings via Zoom. We have also run 3 Alphas in 2024 and 2025.

Reaching People We Currently Don't

We have a real passion for mission, which has seen 3 cohorts of Community Ministers commissioned through the Stepping Up Programme and the establishment of a Men's Group, Bereavement and Paroral Ministries, and Prayer Spaces, with a gardening group currently in the early stages of development.

Our regular programme of outreach includes our Big Ted pre-school group, weekly coffee mornings at St George's and Christ Church, the largest Foodbank centre in Redcar and Cleveland, and a Craft Class; monthly Table Top sales at Christ Church; and annual OAPs tea and a successful Christmas Fayre at St George's. Additionally we hold Carol Service on Christmas Eve at Christ Church and Carols on the Car Park at St George's in the week leading up to Christmas to engage with our neighbours around the church.

We have partnered with the Message Trust to run 2 successful youth events in St George's in which nearly 200 young people made a commitment to Jesus (though sadly the follow-on work has foundered due to lack of youth leaders).



In June 2025 we held a family fun day which brought in families from the local community.

We also offer our Halls as a resource for the wider community, including hires for various Council-run groups such as the Neighbourhood Action Partnership, a local dance school, and a fitness group and in the run up to the General Election, Christ Church hosted one of the local hustings.

Growing Missionary Disciples

In addition to the 5 small study groups we have also developed the midweek service to offer church for those who cannot attend on Sundays due to work or caring commitments.

Finance and Giving

Our Parish is one of the 10% most deprived in the country but we have a long tradition of giving generously to the Diocese and tithing 10% of our income to Christian Mission.

In 2025-6, with the help of our share of funding from the Lowest Income Communities Fund the Parish has met our commitment to fund the Direct Costs of Ministry. In September 2025, the PCC agreed to increase our Free Will Offer by 3.5% (slightly less than had initially been planned because the Parish will be without a Minister for the first half of 2026) as a first step towards meeting our target for the Total Costs of Ministry by 2030.

At the time of writing, our income exceeds our expenditure by a small margin due to the generosity of Parishioners and good stewardship of resources, for example by careful management of energy contracts. In 2024-5 income of £99,000 appears to have been massively exceeded by expenditure of £175,000, but this included £77,500 expenditure on Christ Church which had been funded through previous fundraising and bequests. In 2025/6 the Treasurer is forecasting unrestricted income will be in the region of £93,000 and expenditure £83,000.

The annual accounts for 2024/5 are available at [Eston with Normanby 2024 Final Accounts.pdf](#).

In 2025/6, our churches have given funding to support the following mission and ministries: Redcar Area Foodbank; Oddments Theatre, the Christian Institute Legal Defence Fund, ReSource, Bible Society, Jesus Shaped People and TAKK Trust.

The generosity of the Parish is mirrored by the generosity of individual Parishioners. In 2023 a gift day to raise funds for the building work at Christ Church raised £30,000 for the refurbishment of Christ Church Hall and the 2025 Gift Day has already raised £13,000 (£6,000 of which was given specifically for the heating at St George's). Additionally, week in and week out there is generous support for the Foodbank in cash and donations of food; for the last 3 years, that generosity has enable us to purchase supermarket gift cards totalling £1000 to give away as Christmas gifts to Foodbank clients.

We also endeavour to be generous to other churches, hosting the World Day of Prayer Service on a regular basis; loaning out our Baptistry (which we have done on 3 occasions during the past 18 months); gifting Advent readings books paid for by our church members and supporting the local Salvation Army annual toy appeal (in 2024 so many new toys were given that it required 8 journeys to transport them all). .

Who we are seeking

We are praying for a Priest in Charge who is faith filled and enthusiastic, a people person able to inspire and grow us as disciples and manage the day to day with wisdom and discernment.

We are a warm and welcoming community who have embraced change and growth especially following the prolonged interregnum in 2019-21. We are seeking someone who is able to build on and consolidate what has been achieved during the past four years while inspiring and encouraging us to keep pushing forwards.

Our churches are mix of new disciples and those who are more mature in their faith. We are seeking someone who will help us continue to attract and grow new disciples and who will support and encourage those who are already on the journey, who will facilitate a culture in which people feel supported and valued and in which all are encouraged to develop their spiritual gifts, talents and ministries.

Good communication skills will be essential, combined with spiritual depth and wisdom, and spirit-filled teaching. We are open to someone who will challenge and stretch us to be the best we can be.

We have a strong and committed leadership team and we are seeking someone who will work closely with them, especially the Church Wardens to develop a shared vision to move forward, while effectively managing the day to day. That person will also need patience and discernment, and an ability to build bridges where differences exist between our two churches and create a deeper sense of unity and shared vision.

We have seen effective links developed with the civic community, Funeral Directors and local clergy and we are keen to see our new Rector embrace and further develop these relationships. Which will require patience, tact and a passion to see the church at the heart of community life.

We have seen the positive impact of having a visible ‘face of the church’ in the community and would like our minister to be someone who builds on this, who is passionate about encouraging people to feel welcomed into our churches, able to talk to people from all walks of life and to take an active and visible role in outreaches such as the coffee mornings and Table Top Sales and Foodbanks.

We have a heart for the youth of our community but lack the capacity to develop a youth ministry and we are seeking someone who shares our heart and has a passion to build in this area, who will maintain existing links with schools and youth organisations, initiate links and help us to create and maintain a youth presence and ministry in our churches.

A Year in Our Parish - 2024-5 reports from our groups

Big Ted

As we look back over the last year –

- We continue to be grateful to Beacon House Group who help to set up the chairs and toys for Big Ted, and to Mike, Sue and Dave who regularly help at the end of each session to move all the chairs back and Hoover. We are so grateful for their time and energy.
- Our Facebook page continues to be a useful tool to communicate session dates, church events and upload photos of activities. A big thank you to Andi who does all this for us.
- We are pleased to have a new Big Ted page on the church website, to increase our online profile. Many thanks to Carol for setting this up.

As we look forward, we hope to –

- Continue to provide a safe sanctuary and welcoming play environment.
- Sow seeds of faith through simple children’s worship songs, a short bible story, and a short, Christian message aimed at the adults.
- Encourage some of our Big Ted families to attend some outreach events and All Age Worship services

- See more people from our fellowship volunteering for any of the following helpful jobs – welcoming parents and chatting to them during the sessions and serving refreshments. We have lost one team member and now operate on the absolute minimum team numbers.

Coffee Mornings - Christ Church

Our Tuesday coffee mornings continue to be as popular as ever, and such a joyful part of our Church life. We welcome new guests on a regular basis, who soon become part of our lovely crowd each week, such is the friendliness of everyone. In addition to coffee and conversation, we also have dominoes and chess and of course - and most important of all - prayer and/or support for anyone in need, whatever their reason. We are always able to accommodate any request and being part of this important outreach is a wonderful blessing.

In the coming year we pray for a further increase in our numbers, particularly those from the local community who might benefit from a warm welcome and companionship in an accepting and safe environment.

Coffee Mornings – St George’s

The Friday Coffee Mornings at St George’s have continued to attract regulars from both members of our Church family and those who don’t come to services but consider themselves part of our church. It’s a lovely hive of activity, with people enjoying a game of pool, playing cards or dominoes, doing some crafts or just enjoying the company. It’s a lovely welcoming space and it also creates a warm, friendly atmosphere for those who come to Foodbank to collect food parcels.

We are grateful to the kitchen staff who do a wonderful (usually non-stop!) job of serving bacon and sausage buns and cheese toasties to Foodbank clients and volunteers as well as those who are there for the social side.

If you’d like to join us, you’ll be very welcome!

Foodbank

We have had a busy year: in 2024, the Foodbank here at St George’s has helped 778 families, totalling a staggering 1711 people, many of whom were children. On average we now fulfil 16 vouchers per week, feeding 30 people. Staff have worked really hard but it is a privilege, and we look forward to continuing to serve in the coming year.

Ladies’ Fellowship

We meet each week in a member’s home where we receive bible based teachings and enjoy occasional faith meals together. We enjoy outings where members are given lifts to venues when needed, garden parties, and fellowship. A time of prayer is included where members of the congregation are prayed for in addition to our own members. Additionally, people can be prayed for via our Prayer Chain.

We look forward in prayer to our Unity Service to which all the churches in the area have been invited and pray that we may all be blessed. We pray that we will continue to have

the health, strength and transport to continue in fellowship, study and other activities that we enjoy and engage in.

Knit and Natter

I could never have imagined how the Knit and Natter group would take off; it is growing weekly. We run the group in the Narthex alongside the Tuesday Coffee morning. It is a warm friendly environment, with a lovely atmosphere, we have all learnt new skills from each other and natter about all aspects of life; we enjoy refreshments together and put the world to rights - or try to! People are happy to come on their own and new friendships have been made.

Men's Night

We have met 10 times this year. Numbers are steady 12-14, some progress with some of them. We continue to encourage and to witness and see where the Lord leads us.

Music Group

As we look back over the last year –

- We've been able to provide live Sunday worship music in both churches.
- We continue to occasionally swap musicians around so everyone gets the opportunity to lead worship at both Christ Church and St. George's.
- We are delighted to welcome Chris as a new singer to the group.

As we look forwards, we hope to

- Continue with the challenge of learning a new worship song every month! The congregation has risen to the challenge and we've all been blessed by the power of the words and music.
- Ensure we provide the best we can by practising every week.
- Grow the group by being committed to praying for new members and by providing opportunities for people to join us and develop their musical gifts.

Prayer Space

As a result of my Stepping Up course I have created a prayer space at the rear of Christ Church, it's a peaceful space where people can sit quietly and comfortably to spend time with God. There is a candelabra where candles can be lit either in memory of someone or just because they choose to. There is a display of prayer cards that cover all aspects of life, that can be taken and given out to family and friends depending on their needs. It is open for all to use.

Sewing Group

We are a small group that would love to welcome more like-minded crafting people (man or woman, we don't mind – but no power tools, please!). We meet on Tuesday afternoons and chat, drink tea, coffee or other and do our own crafts, help each other if we can, and generally have a relaxing crafting time.

We celebrate with cake, and go for afternoon teas, Christmas lunch or just generally having fun.

We charge £2 per session which we use to pay for the cost of gas and electricity costs, so we don't make any profit. New members welcome.

Small Study Groups

- **Anchor**

It's so good to meet together in our little house group and share the joys and sorrows of life, and what God has done for each one of us.

We meet on Tuesday 1:00 to 1:30 in the Pringle Room to learn more about the love of God and how He wants us to participate in His Kingdom.

We enjoy tea and a chat, and Peter playing Guitar. Worship brings us much closer to God and we share and pray into any situations of need that concern us.

We've had some very good studies: we have just finished "God in all his fullness." As Paul prays in his letter to the Ephesians that we may be filled to the measure of all the fullness of God. We always want to know God a little better each day and this teaching was very helpful.

We are always happy to welcome people who have never been in a house group before to be part of our family.

- **Beacon**

In the summer term, Beacon split into two new study groups to create room for new members. The 'new' Beacon group continues to meet on Monday evenings in the Pringle Room and we really enjoy our time together. Over the last year we have completed studies on the Disciples, the Parables of Jesus and now we are looking at the 'I am' sayings of Jesus. It's a great way to learn more about the Bible but it's also fun to worship and pray together and generally support and encourage one another.

All in all it's been another great year of fun, friendship and growing in our faith and now we're looking forward to what the Lord has in store for us in the coming year.

- **Cornerstone/Rainbow**

This year, due to various reasons our meetings have been fewer, both in times we have met together, and in numbers meeting. However our time together continues to be a special time of the week where we continue to enjoy our Bible study & prayer, and giving care and support to each other. Our main study time being centred around Philippians. a study provided by Stephen Street. This has been peppered with studies Advent and Lent Studies

Another visit to the pantomime was enjoyed by those who were able to go.

- **House**

House is a mixed group of mainly 25-45 year old's. People from both churches attend. We meet each Tuesday at St Georges to fellowship together.

Last year we did the Spirit Filled Church course, as most home groups did. We hope to get out more for social events this coming year. Costa coffee nights are a good way of relationship building, and of course meals or drinks out together. We care for and support each other as we meet, and cover each other with prayer and keep in touch via our Facebook page. Due to a good part of the group being shift workers, there have been challenges in trying to arrange our Tuesday nights together and new members would be welcome.

- **Lighthouse**

We have continued to meet at the home of Pat and Ivan Wetherell who have been wonderful hosts. On the occasional times when they have been unable to host us, Melva and Merle have stepped into the breach and kept up the high standard that we have become used to.

Our regular time together follows a familiar pattern of fellowship, praise, study and prayer. Sometimes we take a break from the usual to enjoy a time of just being social with each other. Food is important to us when we socialize and this has taken the form of either a faith meal, a Christmas meal or a pancake party. There has also been an occasional quiz thrown in.

We have enjoyed two study series through our last twelve months. These have been focused around the Cross Shaped Jesus studies and a set of studies on The Sermon on the Mount/Beatitudes. We are currently about half-way through The Sermon on the Mount studies. At our current rate of progress we expect to finish these somewhere between now and Christmas (we don't see the point in rushing a good thing).

- **Open Door**

We have had a lovely year getting to know each other and sharing bible study together.

Relationships in the group are becoming closer as we learn to trust each other with confidential matters.

We are all grateful for Zyg who leads us in beautiful worship. We have ten members at the moment; hopefully more people will join us this year.

We all want a closer relationship with the Lord and each other.

Sunday School

Sunday school continues to struggle with only a few children – and some Sundays none at all. We continue to pray for an increase in families in the church.

But, when we have the children, it's a fun morning for them and a joy to teach them.

Table Top Sales at Christ Church

We have now had a full year of tabletop sales within the Church itself rather than the hall and, despite our initial concerns regarding coping whilst the remedial building works and kitchen refurbishment were underway, those concerns have been completely forgotten, such has been the success of the change of venue. Our numbers have increased each month, guests have stayed until closing in most cases and everyone has had a thoroughly enjoyable morning each month - both guests and Church members. Tabletop sales will now remain in the Church and mentioning this to guests has met with great approval. It is hard to quantify the blessings the sales bring to us each month.

Our wonderful supporters have continued to supply us with good quality goods for resale, not to mention tombola prizes, and we look forward to another year of providing this invaluable outreach to the local community, many of whom have become dear friends.

Thank you to everyone who has helped in any way - we really could not do it without you all. A real team effort.

The Rectory

The current Rectory adjacent to Christ Church was built in 1981 to replace the original building across the road. After many years as the residence of the Team Vicar, and then privately let by the Diocese, The Rectory once again became the residence of the Rector of the Parish in 2021.

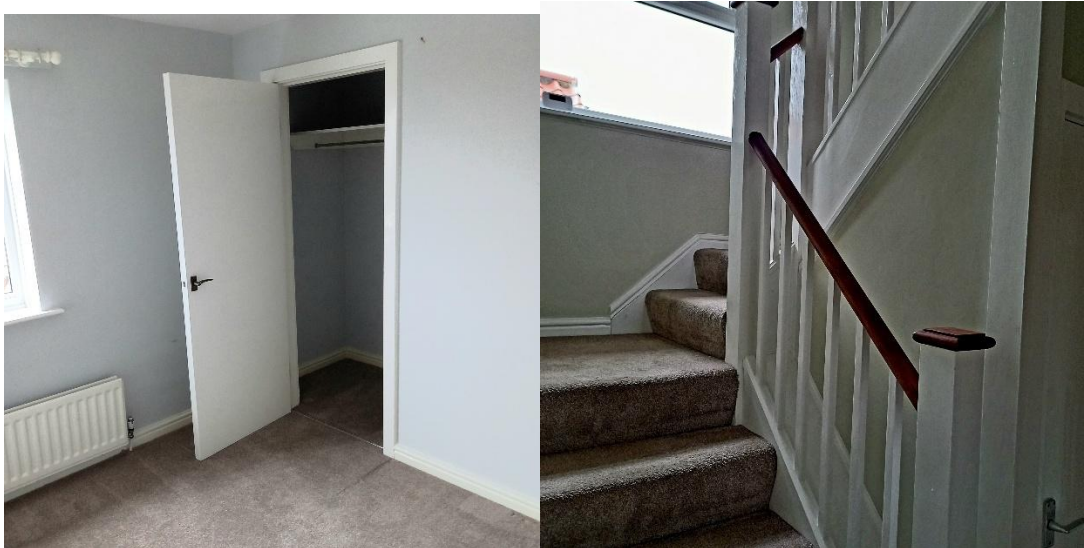


It is a well-appointed modern building that was substantially renovated, including the installation of a new kitchen, in 2021 following flood damage caused when the outgoing tenants failed to switch off the water supply and the pipes burst.

The ground floor consists of a lounge, dining room, office/study, kitchen, utility room and cloakroom.



On the first floor there are 4 bedrooms (one of which is ensuite), and a family bathroom.



(This is just a selection of photos - unfortunately taken after the Rectory had been vacated, so they do not do this lovely home true justice. However, we hope they will give you a favour that will encourage you to want to come and see more.)

There is central heating throughout, powered by a gas boiler.

There are gardens on two sides and a large garage to the side. The driveway (which runs alongside the church) is gated, and leads to a substantial but private parking area in front of the Rectory.

The 2022 Quinquennial report is attached at Appendix 1 and the Energy Performance Certificate is attached at Appendix 2.

Appendix 1 – Rectory Quinquennial

Surveyors name:	Jamie Rotherham	Date of survey:	July 2022
Address:	73A High Street, Eston Middlesbrough		

*Please circle the relevant boxes or shade in grey if filling in electronically

TYPE (Circle all that apply)				
Built form:		House	Bungalow	Flat
Detachment (inc. for flat):	Detached	Semi Detached	Mid Terrace	End Terrace
Build type:	Brick cavity	Timber frame	Other (please state)	
Year built:	1981	Month completed internal work:		
No. of bedrooms:	4	No. of storeys:	2	Floor level if a flat:
No. of reception room	2	Disabled specific	Yes	No
If 'Yes', please provide details of disables adaptations:				

MAIN ROOF					
Material:	Clay tile	Concrete tile	Slate	Artificial slate	Other, please specify
Approx. area:	120	Is there a flat roof?		Yes	No
No. of Velux windows?	0	Flat roof area:			
No. of dormers?	0	Flat roof material:			
Roof orientation:	West/east				
Roof shadowing:	None	Moderate	Significant		
Ridge/Hip Repoint Remaining Life	15	Chimney Repoint Remaining Life			
RWG's Remaining Life	10	Years until full re-roof needed			
No. of solar thermal panels?	0	No. of solar PV panels?			
No. of brick chimneys?	2	No. of flues?			
Guttering length in m (approx.)	35	Material if not uPVC?			
Total rainwater downpipe length in m	20	Material if not uPVC?			
Soil pipe length in m (approx.)	10	Material if not uPVC?			

EXTERNAL WALLS								
Material:	Brick	Stone	Concrete	Timber Framed	Other			
Wall Construction	Solid	Cavity	Evidence of insulation?		Cavity	Int.	Ext.	None
Cavity width in mm:	300							
Areas of cladding:			Area for full repoint in future:					
Cladding material:	Wood	Render	uPVC	Tiles	Other, please specify			
Secondary cladding:	Wood	Render	uPVC	Tiles	Other, please specify			
Years until primary finish repair/repoint	45							
Years until secondary finish repair								
Primary Wall finish area			125M ²	Secondary finish area		M ²		

BOUNDARIES to left side and far edge as looking out from property					
Boundary well present?	Yes, freestanding	Yes, retaining	Please specify length:		No
Fencing present?	Yes, timber - 1m high	Yes, timber - 1.5m high	Yes, other	Please specify length:	No
Other boundary?	Hedging	Other, please specify:		Please specify length:	
Number of gates:	Timber:2		Metal:1		

PATHS – generally last 30 years							
Front path?	None	Brick Pavior	Concrete	Gravel	Paving slab	Ramp	Tarmac
Other surface type, please specify:			Area of front path:				
Rear path?	None	Brick Pavior	Concrete	Gravel	Paving slab	Ramp	Tarmac
Other surface type, please specify:			Area of rear path:		25m2		
Side path?	None	Brick Pavior	Concrete	Gravel	Paving slab	Ramp	Tarmac
Other surface type, please specify:			Area of rear path:		15m2		
Driveway?	None	Brick Pavior	Concrete	Gravel	Paving slab	Ramp	Tarmac
Other surface type, please specify:			Area of driveway:		90m2		
Car park area?		No car park			Within curtilage		

WINDOWS				
Total no. of windows of the whole property:	18	If block – no. of windows per flat:		If it has a communal area – no. of windows:
Material:	Timber	PVC	Aluminium	Other
Glazing:	Single	Double	Triple	
Install Date	2021	Replacement Year	2046	

DOORS				
Front door material:	Timber	Composite	PVC	Metal
Approx Year Installed	2021	Replacement Year	2056	
If for Flat, is there direct exit to outside?			Yes	No
Rear door material:	Timber	Composite	PVC	Metal
Approx Year Installed	2021	Replacement Year	2056	
Secondary Door material	Timber	Composite	PVC	Metal
Approx Year Installed	1981	Replacement Year	2026	
Patio door material:	Timber	Composite	PVC	Metal
Approx Year Installed	2021	Replacement Year	2056	

ELECTRICS – Detectors 10 years						
Number of Hard Wired:	Smoke detectors	2	Heat detectors	1	CO detectors	1
Replacement year of Hard Wired Detectors		2031				
Consumer Unit:	Fuses		Fusebox & Breakers		Breakers	
Secondary Consumer Unit:	Fuses	Fusebox & Breakers		Breakers		None
Periodic Inspection Date Sticker		2026				

VENTILATION		
Kitchen Extractor?	Yes	No
Bathroom Extractor?	Yes	No
Whole House Ventilation e.g. MVHR (please specify make / model)	Yes	No
Other types of Ventilation (please specify)	Yes	No

KITCHEN					
Number of cupboards (approximate count of single doors):					18
Adequate Space		Yes		No	
Spaces for (circle all that apply):	Cooker		Fridge		Washer Kitchen table
Utility room?	Yes	No	Built-in hob?		Yes No
Install Date	2021		Replacement Year		2041

BATHROOM 1					
Circle all that apply:	Bath	Cubicle	Electric shower	Mixer shower	Wetroom
Install Date	2021		Replacement Year		2046
Potential to add shower if none	Yes	No	Adequate Location		Yes No

BATHROOM 2/EN SUITE					
Circle all that apply:	Bath	Cubicle	Electric shower	Mixer shower	Wetroom
Install Date	2021		Replacement Year		2046
Potential to add shower if none	Yes	No	Adequate Location		Yes No
Circle all that apply:	N/A	Bath	Cubicle	Electric shower	Mixer shower

SEPARATE WC		
Is there a separate WC?	Yes	No
Is there a WHB?	Yes	No

SECOND WC		
Is there a cloakroom WC?	Yes	No
Is there a WHB	Yes	No

HEATING							
Main fuel type (circle one):	Gas	Elec E7	Elec Peak	Solid Fuel	Oil	Other, please specify	
Main heating emitter (circle):	Radiator	Under floor	Wall heaters	Storage heaters	Panel heaters	Other	
Secondary heating emitter:	Radiator	Under floor	Wall heaters	Storage heaters	Panel heaters	Other	
Heat source in all rooms?	Yes	No	If no, in all except kitchen?		Yes	No	
Additional heat source, circle:	Elec spur point		Elec fire	Gas fire	Open Fire		
Other, please specify:							
Approx year installed:	Boiler	2021	Main Heating	Secondary Heating			
Boiler make and model	Worcester Combi Boiler						
Water Tank:	N/A		Foam Insulated	Jacket Insulated			
Specify water heating is not from main heat source?							
Loft insulation thickness in mm?				300mm			

COMMENTS / NOTES
<p>Please include here anything out of the ordinary or that only affects certain properties including: <i>Details of any ecological enhancements to be maintained / liability for e.g. wildlife area / green rood etc. Any features which are different from building regulations e.g. unusual cavity width / extra insulation etc.</i></p> <p>The property has recently been refurbished following water damage from a burst pipe during Febraury 2021.</p> <p>Windows and doors have also been upgraded.</p> <p>No work to be carried out during this 5 year cycle.</p>

Energy performance certificate (EPC)

73A HIGH STREET ESTON MIDDLESBROUGH TS6 9EH	Energy rating C	Valid until: 21 June 2031
		Certificate number: 2731-1618-1514-4531-1111

Property type Detached house

Total floor area 155 square metres

Rules on letting this property

Properties can be let if they have an energy rating from A to E.

You can read [guidance for landlords on the regulations and exemptions \(https://www.gov.uk/guidance/domestic-private-rented-property-minimum-energy-efficiency-standard-landlord-guidance\)](https://www.gov.uk/guidance/domestic-private-rented-property-minimum-energy-efficiency-standard-landlord-guidance).

Energy rating and score

This property's energy rating is C. It has the potential to be B.

[See how to improve this property's energy efficiency.](#)