

PRIEST & PARISH PROFILE

THE UNITED BENEFICE OF
ST MICHAEL'S

DALSTON

WITH ST JOHN'S
CUMDIVOCK,

CHRIST CHURCH

IVEGILL,

ALL SAINTS

RAUGHTON HEAD

AND ST MARY'S

WREAY



JOB PROFILE

Your role would include the following:

- Be the hub of communication both within the church and in sharing the Gospel to the community
- Help identify the spiritual gifts which the church members have and encourage them to develop and use those gifts
- Help us to grow younger and be mindful of up-to-date thinking
- Work within our schools and with families in the Benefice
- Have the ability to inspire young people to become involved in the church community
- Provide inspiring and motivating leadership to let every member further develop their skills – teamwork is essential to our parishes
- Be a positive presence who will be visible within the community, getting to know people and encouraging them in their daily lives
- Provide leadership in helping church members to be active in the community
- Teach and enable discipleship in order that we can go out and share Jesus in word and deed
- Being amenable to different worship styles across the Benefice

PRIEST PROFILE

We would like our new priest to have the following qualities:

- Be a good confident communicator and an inspirational Gospel teacher
- Have a spirit of prayerfulness, expressing the love of Jesus in their daily life
- Be discerning in heart and mind
- Understand the importance of villages in rural life
- Have the ability to listen and to respond in a Christ-like manner
- Value, appreciate and be interested in people
- Be an effective administrator
- And finally - have a sense of humour; be joyful and welcoming

THE UNITED BENEFICE

INTRODUCTION

This vacancy presents an exciting yet challenging opportunity to continue and develop our vision of “sharing the love of Jesus” across our Benefice. We have a passion for serving our communities and pray that you might be led by the Holy Spirit to join and lead us on our mission of faith.

The four parishes that make up our Benefice have each produced an individual profile to provide a picture of their distinctive nature. We are all held together by a tremendous community spirit underpinned by our agricultural history and augmented by families moving into the area for work or retirement. All the churches are very much part of their local community and it is often difficult to see what “the church” is doing as opposed to the community in general.

MINISTRY TEAM

We are fortunate to have **two curates** within the Benefice. Both are self-supporting ministers, working elsewhere in full-time employment, with St Mary’s, Wreay as their home church. Derek was ordained as a Deacon in June 2024 and as a Priest in June 2025. Sheryl was ordained as a Deacon in June 2025. They work across the Benefice taking services and supporting the congregations and the wider community.

Doreen is a licensed **lay-reader** based at All Saints, Raughton Head, and regularly takes the Sunday services there.

There is a self-employed **parish administrator** who is a point of contact for all the parishes. Helen’s duties (in conjunction with the incumbent) include liaising with families in relation to baptisms, marriages and funerals; arranging organists and vergers as required, preparing parish rotas and having responsibility for collecting and distributing parochial fees.

Each parish has its own **PCC**, with their own treasurer and secretary.

Currently each parish enjoys the services of an **organist**.

Each church continues to be a focal point for their local community and people with family links to the area. A number of baptisms, weddings and funerals are held in each parish each year. The following data is for 2024.

Parish	Baptism	Weddings	Funerals in church	Funerals at the Crematorium
Dalston with Cumdivock	12	4	12	2
Ivegill	1		5	
Raughton Head	4	2	2	
Wreay	3	1	1	
Total	20	7	20	2

Cumdivock Dalston Wreay



SAFEGUARDING

Each parish has a Parish Safeguarding Officer (PSO) and operate within the Church of England Safeguarding Policy: Promoting a Safer Church, which is approved annually by the respective parishes at their Annual General Meeting.

Each parish is working towards achievement within the Parish Safeguarding Dashboard. With support from the Diocese of Carlisle and the Thirtyone:eight organisation we strive to ensure that all volunteers across the Benefice, working with children and vulnerable adults, are up to date with the Disclosure and Barring Service (DBS) checks, and the recommended safeguarding training.

We have a DBS recruiter who facilitates the benefice DBS checks, whilst the recruitment officer for the Benefice has historically been the incumbent.

LOCATION

The Benefice lies approximately 5 miles south-west of Carlisle, with the Lake District to the south, Hadrian's Wall and the Scottish Border to the north, the Solway Coast to the west, and the Eden Valley to the east.

All the parishes are within easy reach of the M6 with its links north into Scotland and south into the rest of England. There are also road and rail connections to the north-east. The West Coast Main Line runs frequent train services through Carlisle between London and Scotland. There is a railway station in Dalston with regular trains to Carlisle and to the west. A bus service also runs from Dalston to Carlisle and to the Lake District town of Keswick.

Between one and two hours away by road or rail are Glasgow, Edinburgh, Manchester, Liverpool and Newcastle, which provide all that large cosmopolitan cities have to offer including international airports.



LOCAL FACILITIES

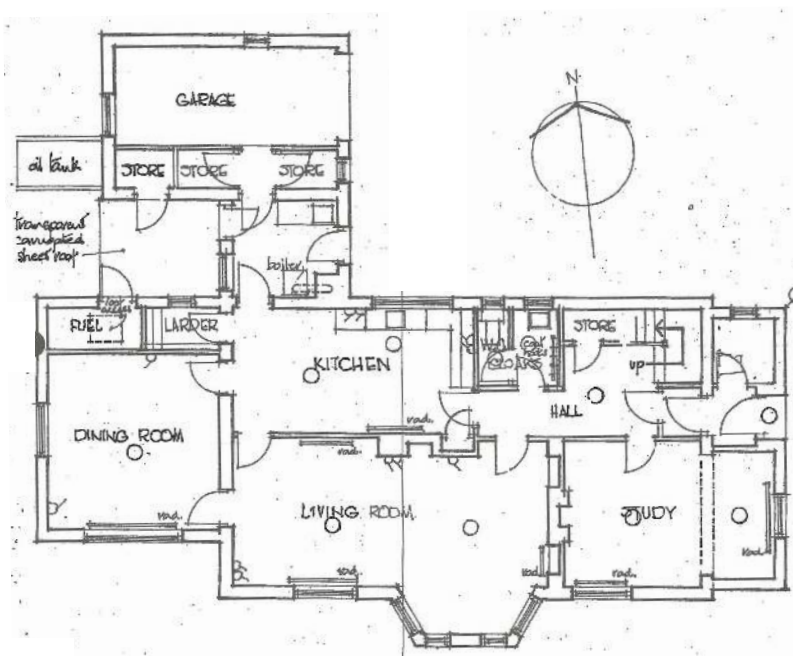
The Great Border City of Carlisle is rich in history and within easy reach of the Benefice. It offers all the facilities you would expect from a small city: a regional hospital, shops, restaurants, leisure facilities, cultural activities, a museum, a castle and the cathedral.

The large village of Dalston caters for most essential daily needs with it's doctor's surgery, pharmacy, dentist, veterinary practice, building society, and a wide variety of shops including a post office and a good-sized Co-op. There is also a recreation ground with a bowling green and tennis courts, two pubs, a café and a fish and chip shop.

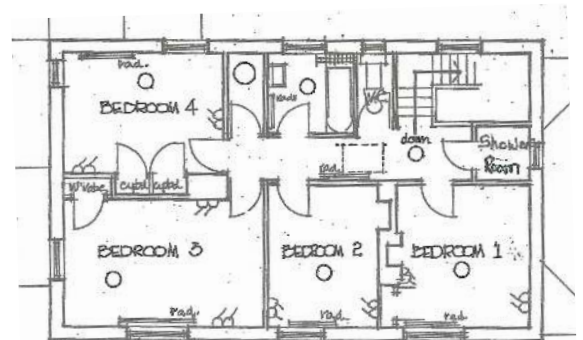
There is a Church of England Primary School in each parish and a large secondary school in Dalston for pupils aged 11 to 18. There is also a private school near Dalston for pupils aged 7 to 18 as either day students or boarders. Further education is available in Carlisle at Carlisle College and the University of Cumbria.

THE VICARAGE

Located in Dalston and built around 1956 the four-bedroomed vicarage is close to the village centre. Various improvements have been made over the years to provide a comfortable home: double glazing, gas fired central heating, modern kitchen, wood burning stove, shower room, and intruder alarm. Outside there is an established garden with paved patio, a garage and space for visitor parking.



Ground Floor



First Floor

The Square, Dalston



DALSTON WITH CUMDIVOCK

THE WORSHIPPING COMMUNITY

Our mission and vision is for Personal and Spiritual Growth centred on “Sharing the Love of Jesus”. We prayerfully seek to:

- Grow as disciples of Christ through Prayer, Bible Teaching and Learning.
- Become more Mission Focused and Reach Out to our Community.
- To Praise and Worship in Spirit and in Truth.
- To Love One Another as we are called by God to do and to Build Transparent Relationships.

We are endeavouring to bring our Vision alive throughout this profile and retain awareness that there is scope and potential for development in all these areas.

Church Services at St Michael’s Church

Our regular Sunday Service is at 9.45 every Sunday.

1st Sunday Holy Communion.

2nd Sunday Morning Prayer and Worship

3rd Sunday Holy Communion

4th Sunday Morning Prayer and Worship

5th Sunday Informal Worship

Tot’s Church for 0-4 year olds is each Sunday at 09.45 am

St Michael’s is open daily

St Michael’s Congregation

St Michael’s is a thriving church at the heart of our community and as people move home and workplace, we often have new people who are warmly welcomed to St Michael’s. This brings ongoing new life to St Michael’s with fresh thinking and skills making church life always stimulating within and beyond church services.

A number of young families attend Sunday services giving a balanced blend of longer serving and younger members. We are faithful in prayer and worship while recognising the desire to update with sometimes a more informal style of services. The younger members energy and enthusiasm encourages longer serving members to embrace new ideas, reach out and seek ways to be more connected with the community.

There are 67 names on our electoral roll and between 40 and 50 normally attend our Sunday services.

At special services such as Easter, Harvest, Christingle and Mothering Sunday, the church often attracts many more.



On Remembrance Sunday and at the Christmas Carol Service the church is usually full to standing room only.

There are many activities in Dalston and the church contributes in attracting people's time and varying interests.

St Michael's church has established a good reputation and is well-known as a church that actively welcomes everyone from all areas of life as they enter St Michael's.

Music in St Michael's

At Sunday services St Michael's has a variety of modern worship songs and traditional hymns accompanied by guitar, piano or traditional organ. A Worship Group regularly support our worship through singing and piano accompaniment.

The church has an excellent multi-media system enabling projection of the liturgy, hymns, images, and film to enhance the messages of the service. It is also used for projecting, as required, a speaker's overhead images.



St Michael's Church Parish Activities

- Prayer Group
- Bible Study Group
- Tea Services are held at Easter, Harvest and Christmas led by lay members. This is a short service followed by afternoon tea, often attracting those who cannot attend formal services or who are more loosely connected to the church.
- Bible Book Club
- Mothers' Union
- Ark and Craft Group
- Coffee Mornings, held fortnightly in church on Saturday Mornings
- Dalston Parish Paper
- Our church PCC has 7 members and normally meets every 2nd month
- Our church PCC has recently become a registered charity



St John's Church, Cumdivock

St John's currently holds services to mark feasts and festivals. Some remaining members of the small and faithful congregation attend St Michael's.

Many parishioners in this rural area although rarely coming to church are most supportive of it and happily volunteer to clean St John's and decorate the church with flowers.

Services also take place for weddings, baptisms, funerals and on Remembrance Sunday.

THE PARISH OF DALSTON WITH CUMDIVOCK

Education in Dalston

St Michael's Church offers an excellent venue for concerts and activities staged by both nurseries, the St Michael's primary school, Caldew School and Lime House School.

Nursery Education

There are two nursery providers in Dalston. Abacus and St. Michael's pre-school.

St Michael's Church of England Primary School

The school has 211 pupils and celebrates Christian-based school values of respect, kindness, challenge, perseverance and forgiveness. The SIAMS report recognises "every child is welcomed as a valued member of this Christian family". The Ofsted Inspection in 2024 was designated "Good" in all aspects. The Vicar is a Governor of St Michael's school. A member of our PCC as also on the Board of Governors.

Caldew Secondary School

Caldew School has just over 1000 pupils aged 11-18. The Ofsted inspection of June 2022 achieved a "Good" standard in all sections and recognised that "Pupils feel well supported, happy and safe in this welcoming community with high levels of trust and respect between pupils, students and staff." Pupils participate in a range of cultural, creative and sporting activities.

Lime House School

Lime House is two miles from Dalston and offers mixed private education for 7 to 18 year olds either as day or boarding pupils. The school attracts many international students. Every Lime House student has a Personal Development Tutor with whom they discuss both academic progress and general welfare and development. Pupils regularly have gained places at Cambridge, Oxford and a range of top universities.

Facilities and Services

Dalston is a large and vibrant rural village with a population of approximately 3000 and a good range well-stocked shops. There is a Medical Group and a Private Dental Practice.

The picturesque River Caldew flows central to the village.



Dalston in Bloom

For many years our beautiful village has been participating in the Cumbria in Bloom contests as Dalston in Bloom. Throughout the spring and summer season Dalston blooms stunningly with a spectacular floral and plant display throughout the village. A team of dedicated volunteers work painstakingly throughout the seasons. Dalston in Bloom has achieved many prestigious awards and has on occasion become a finalist in Britain in Bloom.



We are fortunate Dalston has a number of allotments close to the village centre. Keen gardeners produce wonderful fruit, vegetables, berries and beautiful flowers.

THE CHURCH BUILDINGS

St Michael's, Dalston

St Michael's Church, originally built in the 12th century, is a wonderful example of a quiet, peaceful medieval type church. It is a Grade II listed building of red sandstone with slate roof and church bells. The church has the chancel, nave, transepts, north porch and aisles. Seating accommodates about 200 people. The church organ dates from 1890 and is used every Sunday. The acoustics in St Michael's church are outstanding and widely acknowledged by performers as the best in the area.



Church House, Dalston

A Grade II listed building of ground and upper floor, adjacent to St Michael's and in regular use for many church activities.



St John's Church, Cumdivock

This beautiful rural church is a 150 year old building being a Victorian replica of an early English church. Simple in form with a peaceful ambience.



Chris Scales, Church Warden

The congregation of St Michael's Church and all who knew Chris are very deeply saddened by his untimely and sudden passing into God's care on Thursday 25th September. Chris was always a pleasant, kindly presence, a stalwart of St Michael's, deeply immersed in his Christian faith, and highly respected by all who had the privilege of knowing him.

IVEGILL

THE WORSHIPPING COMMUNITY

We are a scattered rural parish comprising the nucleated settlement of Ivegill with several small hamlets and many scattered houses and farms.

The adult population of approximately 300 people is made up of a broad spectrum of ages and occupations. The employment is mixed between land based businesses and commuters to Penrith and Carlisle.

Church Services

2 nd Sunday in the month	9.30am Morning Worship
4 th Sunday in the month	9.30am Holy Communion

Additional Services are held if they fall out of pattern e.g. Rogation Mothering, and Easter Sundays

The Ministry

Our Morning Worship services are led by capable members of the congregation who also contribute in all services with intercessions and readings.

The Parochial Church Council

There are 9 members of the PCC.

Parish Activities

We have converted a section at the back of church to provide a space for meetings, and after service coffee.

The church is open daily with the use of a timed lock.

We use the Village Hall nearby for fund raising/ social activities including our bi-annual Soup & Puddings, and annual Strawberry Tea.

The nearby primary school use the church several times for services through the year, a Family Service, Leavers Service, Harvest, and Nativity



THE PARISH OF IVEGILL

Ivegill Village Hall

The hall is opposite Ivegill School and provides an essential role of providing parking for the school staff and parents. The parents in turn use the hall for children's birthday parties and PTA fund raising, There is also meetings for the Women's Institute, Young Farmers, and Dance Classes.

The hall sees many one-off celebrations and meetings including funeral teas and family birthday parties

Ivegill C of E Primary School

Ivegill Church of England School provides education in accordance with the principles and practices of the Church of England (average no's 70). It has received a Good OFSTED report and is well supported by parents. The Vicar has regularly taken Assembly and is also on the Governing Body.

Ivegill Nursery

The Nursery is a located in Ivegill Church of England School, but is a separate charity, which was formed over 30 years ago by the then School Governors. If has received an Outstanding OFSTED report and is well supported by parents

The Pack Horse Bridge

The ancient feature of the Pack Horse Bridge in the village, provides spectators with a view of the annual duck race.



CHRIST CHURCH

Christ Church was built in 1868, and features stained glass in every window. The central panels on the Reredos are ornate carvings in oak, with the remaining panels being the ten commandments painted on zinc.

The Churchyard has a wide variety of wild flowers, nearly 60 species have been identified, which thrive in the controlled un-mown areas.



RAUGHTON HEAD WITH GAITSGILL

THE WORSHIPPING COMMUNITY

This is a scattered rural community with some small villages and hamlets centred on the valleys of the middle river Caldew and the Roe. The main centres of population are Raughton Head, Gaitsgill, Stockdalewath, High Bridge, Hawksdale and Lambfield.

The adult population of approximately 365 people is made up of a broad spectrum of ages and occupations. The main industry is agriculture. Many of the farms are rented from the Church Commissioners.

Recent new buildings and conversion of former farm buildings have brought new families to the parish. Many of these are professional people bringing their own skills and interests into the community.

Church Services

1 st Sunday	11am	1662 Matins
2 nd & 4 th Sunday	11am	Holy Communion
3 rd Sunday	6pm	Non Eucharistic and varied in style
	4pm in winter	

Although the congregation at Raughton Head is not large it is a warm and welcoming church which is growing in numbers. We enjoy a traditional format as well as welcoming more informal services on some Sundays..

We have 53 parishioners on the electoral roll and attendance at Holy Communion averages 20+.

We are proud of our strong links with Raughtonhead C of E School. We have three festival services a year, with input from school children in the services. These are Christingle (held at the end of January), Mothering Sunday and Harvest Festival. The church is usually full on these occasions, as it is for the Carol Service and on Christmas Day. We are developing closer links with children coming into church for some RE teaching by PCC members.

The Ministry

Mrs Doreen Hallsworth is our Lay Reader who regularly leads worship with the full support of the PCC.



Parish Activities

We have converted a section at the back of church to provide a space for meetings, after service coffee and other parish activities, including a well-attended craft/hobby group. The space is also used for fund-raising activities. Our main fund-raising activities are an annual plant sale and an annual Christmas Fayre.

Once a month (on the second Sunday) there is a community lunch held in school (opposite church). This follows a holy Communion service and is an opportunity for members of the whole community, of all faiths and none to meet and enjoy each other's company over shared food.

There is a well-attended carol service and a torchlight nativity service (with real donkey and a baby!) based at church with full involvement from the wider community.

We have a PCC of 8 members with meetings held in church approximately every two months. We have a newly appointed Parish Safeguarding Officer (PSO) who works closely with other PSOs in the benefice.

A parish magazine is published and circulated monthly which aids communication on church and other matters

The church is open daily with the help of volunteers who open and lock the building each day.

The nearby primary school use the church on occasion and recent removal of some pews at the front of church has created more space for such shared use.

There is a fortnightly hobby group held in church to which everyone is welcome and a Friends of the Churchyard group that tends the churchyard.

One of our church wardens runs a social walking group, that meets approximately once a fortnight throughout the year.

THE PARISH OF RAUGHTON HEAD

The Stockdalewath Free Church

All Saints has a close and long-standing relationship with the Free Church. In the recent past the incumbent has preached at a free church service and one of the founder members regularly participates in and leads informal services at All Saints.

Rose Castle

Rose Castle, which was the residence of the Bishops of Carlisle until 2009, is situated in the Parish. This is now the Rose Castle Foundation International Centre for Reconciliation.



The Primrose Hall

Gaitsgill, or Gatesgill (spelt two different ways), has a village hall which is the centre of much of the parish social life. It is here that the Women's Institute meets, also the Young Farmers, Clog Dancers, Art Group, Play Group and Free Church. The hall sees many one-off celebrations and meetings including some church events.



Raughton Head C of E Primary School and Nursery

Raughton Head Church of England School and Nursery provides education in accordance with the principles and practices of the Church of England. It is a thriving school with a strong community spirit, fantastic pupils, staff and parents. Wherever possible it supports the church taking part in family services, sharing Christian values and welcoming the vicar in for worship. The school currently has 78 pupils on the roll (including the nursery) and has a dedicated link teacher for RE and community worship. At its last graded OFSTED review it received a Good outcome with improvements noted in a recent ungraded review. There is an active PTA strongly supported by parents.

The Vicar has regularly taken Assembly and is also on the Governing Body. The school is situated across the road from the church and children take part in many church events.

Young Farmers Club

Raughton Head Young Farmers is one of the largest clubs in the county and provides fun, learning and achievement for young people from ages 10 to 28. The club competes in the full range of competitions and has a busy programme of visits and talks. The club undertakes community events and raises money for charities. In the last two years they have set themselves challenges to raise money for MND, last year by covering Land's End to John o Groats in a day, and this year to climb every Wainwright in a day. Young Farmers provides a valuable social network for young people.

We also have Lime House School within our parish, which is a private school with both day and boarding pupils from age 4 to 18.

ALL SAINTS CHURCH

All Saints was built in 1678 and rebuilt in 1761, with additions made in 1881 and 1968. Further internal alterations have been carried out since 2000. This is a Grade II listed building and is in general good repair. A new heating system was installed in 2023. We have reconditioned a high-quality bell that was originally in St Jude's Church, Gaitsgill and replaced the older bell in the tower. A quinquennial review was undertaken in 2025, which did not show any serious areas of concern and confirmed the church to be in good condition.



WREAY

THE WORSHIPPING COMMUNITY

St Mary's Church at Wreay is an outstanding and famous building. But St Mary's is so much more than architecture, **it is the heart of a lively community**. St Mary's enjoys an average congregation of about 25, rising to over 100 for special services such as the ever-popular family Christmas Eve service when many come from beyond the parish boundaries. There are 45 members on the Electoral Roll. A visitor might well be struck by the relaxed, friendly nature of the people. There is a happy atmosphere and often laughter to be heard. One of the great gifts of the congregation of Wreay is the way in which they work together.

We value diversification and participation in our worship and have devised a series of seasonal liturgies. We also encourage creativity, including music and art. This flair enables us to work as a team with joy, flexibility and fun. We all join in! Services on the 5th Sunday of a month and occasional special services are lay led. During Lent, weekly group meetings are held in various homes. The church remains a focal point for the local community and those with family links to the area for baptisms, weddings and funerals.

St Mary's has a comprehensive website that is kept up to date on a regular basis and where one can find news of future events as well as historical information. Visit www.stmaryswreay.org.

A monthly newsletter is produced and distributed to over 130 houses within the village and surrounding area giving details of church services, other village events and a letter from the Vicar. It is a valuable means of keeping in touch with a wider community as well as the regular congregation.

Church Services

1 st Sunday	11.00 am	Holy Communion
2 nd Sunday	11.00 am	Morning Worship
3 rd Sunday	11.00 am	Holy Communion
4 th Sunday	11.00am	Morning Worship
5 th Sunday	11.00am	Informal Worship

MISSION

At St Mary's our Mission Statement is '**to share God's love with those around us**'.

We care for the whole community and believe in mission, parochial and worldwide, all underpinned by prayer and worship. We are outward looking and support charities locally, nationally and internationally including the



Church Missionary Society, Christian Aid and the Carlisle One World Centre and serve Fairtrade refreshments after the service each month.

We organise a number of social events such as Safari Suppers and Harvest Suppers which are seen as community events.

We always welcome visitors to the church. What do all these visitors find when they come to St Mary's? An individual, inspiring and welcoming church with a peaceful, prayerful atmosphere that is created not only by the unique architecture but also by the people who pray and worship in the church week by week. St Mary's is a peaceful haven for the many who visit.

THE PARISH OF WREAY

The parish is rural. Farming is its centre with some light industry connected with agriculture. There are approximately 350 people in the parish, including those skilled in a variety of occupations, trades and professions as well as retired people. A large proportion of the population nowadays commute to Carlisle for employment. The city provides a wide range of facilities as it serves a large rural hinterland.

St Mary's stands at the centre of the village of Wreay, approximately 5 miles east of Dalston and 2 miles from junction 42 of the M6. The River Petteril runs through the village and through Wreay Woods, a wooded area open to the public and popular with walkers.

The Friends of St Mary's Church

The Friends was formed in 2010 in response to the growing interest in the church and its creator, Sarah Losh. The society has two objectives – to support the PCC in the maintenance of the church and associated buildings and monuments and to invite and receive contributions by way of education, research, publications and meetings. The membership of the Friends includes many of the church congregation but also extends to a local, regional and national level. They hold an annual Friends Open Day and publish the newsletter, *Pinecone*, twice a year.

The Friends were responsible for the refurbishment of the former Chapel of Rest and its transformation into the Sarah Losh Heritage Centre which houses an exhibition and acts as a venue for events.

Wreay CofE Primary School

Wreay Church of England Primary School is part of the Good Shepherd Trust with around 75 pupils many of whom come from outside the school's catchment area. In 2024 it was considered to be Good by the OFSTED and SIAMS Inspectors. Church members have a role on the governing board.



Facilities and Organisations

Even though the village is small there are a number of organisations and church members are active in all these groups. These include the following:

- The Village Hall, the venue for many social events
- Stoneraise and Wreay Women's Institute
- The Twelve Men of Wreay - an ancient village "parliament"
- Wreay Eco Group
- St Cuthbert Without Parish Council

Wreay won the best kept small village in Cumbria in the Britain in Bloom competition in 2023 and 2024 and represented the county in the national awards.

The community is always eager to celebrate, and events have included the Coronation and VE Day celebrations.

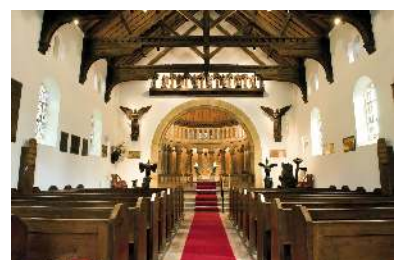
The Plough Inn stands across the village green from St Mary's and is well known for its food.

ST MARY'S

St Mary's Church at Wreay is an exceptional and inspirational building. It was built between 1840 and 1842 under the personal direction of Sarah Losh. She based the form of the church on a Roman basilica, a rectangular nave with a semicircular apse, a building type that was used by the first Christians for worship and which Sarah had seen on her 'grand tour' of the Continent. Within this simple building Sarah created a highly original work – the product of her exuberant imagination. The church is full of symbolic ornament and carvings some of which Sarah carried out herself.

St Mary's has received much media attention and is the subject of the book *The Pinecone* by the renowned historian and biographer, Jenny Uglow. It is listed in many guide books and we ensure that the church is open every day to welcome the many local, national and international visitors that seek it out. Guided tours of St Mary's, led by members of the congregation, are popular with local and national groups as well as commercial tour firms and raise funds for the church.

Work to restore the unique west gable windows is underway with substantial grants from national funding bodies as well as generous support from the local community and Friends of the church. We continue to care for our church which stands at the centre of the village and at the heart of the community.



FINANCIAL STATEMENT: Dalston & Cumdivock

St Michael's Dalston with St John's Cumdivock Parochial Church Council
(Registered Charity No. 1214765)

SUMMARY FINANCIAL INFORMATION

	2024				2023			
	Unrestricted Funds	Restricted Funds	Endowment Funds	TOTAL	Unrestricted Funds	Restricted Funds	Endowment Funds	TOTAL
Income from donations (including Gift Aid)	42,082	41,938		84,021	42,685	40,777		83,461
Income from church events & activities	12,163	470		12,633	10,604	430		11,034
Investment income	8,147	3,895		12,042	3,339	3,836		7,174
Contributions from other PCC's	1,929			1,929	1,686	-		1,686
Income from legacies	4,000			4,000		3,000		3,000
Other income	300			300	(354)			(354)
TOTAL RECEIPTS	68,621	46,304		114,925	57,959	48,042		106,002
Ministry offer (see note below)	20,600	-		20,600	15,000	-		15,000
Buildings costs - St Michael's	14,187	-		14,187	13,673	-		13,673
Buildings costs - St John's	1,609	-		1,609	1,252	-		1,252
Buildings costs - Church House	2,675	-		2,675	2,629	-		2,629
Other expenditure	12,249	46,245		58,494	11,348	52,576		63,923
TOTAL PAYMENTS	51,320	46,245		97,565	43,902	52,576		96,478
EXCESS OF RECEIPTS OVER PAYMENTS	17,301	59		17,360	14,058	(4,533)		9,524
Bank accounts at start of year	31,700	199,813		231,513	27,643	194,346		221,989
Excess of receipts over payments	17,301	59		17,360	14,058	(4,533)		9,524
Transfers				-	(10,000)	10,000		-
BANK ACCOUNTS AT END OF YEAR	49,002	199,872	-	248,873	31,700	199,813		231,513
Investment assets (CofE Investment Fund)			261,158	261,158			255,314	255,314
Church House (at estimated market value)			200,000	200,000			200,000	200,000

Note: the Ministry Offer has increased to £30,000 in 2025 and £31,000 in 2026.

This is a summary of the annual accounts as approved by the PCC, signed by Ben Phillips (Vicar & Chairman) and Malcolm Armstrong (Treasurer) and examined by David H Couling FIIA prior to presentation at the Annual Meeting of Parishioners on 20th May 2025.

FINANCIAL STATEMENT: Ivegill

CHRIST CHURCH IVEGILL

FINANCIAL STATEMENTS - YEAR ENDED 31 DECEMBER 2024

RECEIPTS AND PAYMENTS ACCOUNT

	£
<u>RECEIPTS</u>	
Receipts from donors	8,566
Other voluntary receipts	411
Receipts from Activities for generating funds	1,486
Receipts from investments	468
Receipts from church activities	2,054
TOTAL RECEIPTS	<u>12,985</u>
<u>PAYMENTS</u>	
Fund raising costs	75
Activities directly relating to the work of the church	8,588
TOTAL PAYMENTS	<u>8,663</u>
SURPLUS FOR THE YEAR	<u>4,322</u>
<u>BALANCE SHEET</u>	
Bank Balance	<u>27,098</u>

FINANCIAL STATEMENT: Raughton Head

Raughton Head Church
FINANCIAL STATEMENTS for the 12 months ending 31st December 2024
After inspection

	2024 12 months	2023	2022
	£	£	£
Receipts and payments account			
Receipts			
Donors			
Donations by SO	2,870.00	2,731.00	200.00
Donations (named donors)	1,470.00	130.00	1,530.00
Service collections	3,899.78	4,434.88	3,766.86
Anomalous donations	250.01	215.00	
Other donations/collections	506.50	1,955.00	1,020.00
Gift aid rec'd (named donors) tax yr 23/24	1,001.38		
Gift aid rec'd (small value) tax yr 23/24	1,355.25		
Gift aid rec'd (earlier tax years) 20/21, 21/22, 22/23	3,416.43	1,291.34	
Funeral collections payable to charities	500.00	681.63	500.00
Receipts earmarked for charities			60.00
Total donors	15,269.35	11,438.85	7,076.86
Other church receipts			
Magazine subscriptions	705.00	630.00	720.00
Magazine adverts	60.00	30.00	110.00
Sale of books/pennies	139.15	53.50	69.15
Church activities (xmas fayre, plant sale etc)	2,213.30	1,857.60	1,780.44
Wedding fees	752.00	411.00	
Funeral fees	852.00	1,135.00	160.00
Grass cutting costs reimbursed	1,560.00	1,690.00	1,560.00
Interest received			179.91
Other income received	5,184.50	315.00	240.00
Total other receipts	11,465.95	6,122.10	4,819.50
Total receipts	26,735.30	17,560.95	11,896.36
Payments			
Ministry offer (parish offer)	4,999.56	4,500.00	5,500.00
Insurance	2,431.78	2,358.62	2,221.83
Electricity	4,073.78	1,943.21	1,543.52
Water	144.44	135.56	107.69
Maintenance		2,295.38	2,001.00
Photocopying	587.31	580.50	462.60
Benefice admin. costs	660.00	660.00	660.00
Parish expenses	459.58	570.00	75.00
Other costs	520.22	669.00	529.23
Total church operating costs	13,876.67	13,712.27	13,100.87
Funeral collections paid to charities	216.00	340.82	500.00
Payments earmarked for charities	40.00		
Grass cutting (reimbursed)	1,560.00	1,690.00	1,560.00
Projects (church improvements)		17,947.06	
Total payments	15,692.67	33,690.15	15,160.87
Excess/shortfall of receipts over payments	11,042.63	-16,129.20	-3,264.51
Change in current accounts during year			
At start of year (per bank statement)	4,653.19	20,782.39	24,226.81
Excess/shortfall of receipts over payments	11,042.63	-16,129.20	-3,444.42
Transfers to/from deposit account	-10,000.00		
At end of period (per bank statement)	5,695.82	4,653.19	20,782.39
Change in deposit account during year			
At start of year (per passbook)	28,303.62	27,858.48	27,678.57
Transfers from current account	10,000.00		
Wharton legacy (Endowment fund)	10,000.00		
Interest received	1,062.62	445.14	179.91
Interest received on legacy	379.75		
At end of period (per passbook)	49,745.99	28,303.62	27,858.48
Total cash funds	55,441.81	32,956.81	48,640.87

RH accounts 2024 (97-03) 12mnths (4May25) 04/05/2025

FINANCIAL STATEMENT: Wreay

St Mary's Church, Wreay

Financial Statement for the year ended 31st December 2024

Extract from the Saint & Co Independent Examiners Report

Receipts	£	Payments	£
Incoming Resources from donors	17,149	Grants	556
Other Voluntary Incoming Resources	5,817	Activities Relating to work of church	37,511 **
Income from Charitable & Ancillary Trading	2,269	Church Management & Admin.	2859
Totals	25,235		40,926

Excess of Payments over Receipts for the year (15,691)

Assets:-	£
General Fund carried forward at 31st December 2024	5,156
Building Fabric Fund	26,478
CBF Deposit Fund	3,920
Brian Hodgson Fund (Restricted)	58,554
Monetary Assets Total	94,108

Notes:-

1. Planned Giving was £9,970
2. Parish Offer was £15,840
3. If required the full Financial Statements document can be made available on request
4. ** Included a new boiler and related stone works £9,471
& survey work for window restoration project £3,000