



Parish Profile

2026

Diocese of **Guildford** 
Transforming **Church**
Transforming **Lives**



St John the Baptist, Windlesham

Loving God.

About people.

For you.

Contents

1 WELCOME FROM

Bishop Paul
Archdeacon Catharine
The Wardens, Hannah and Brian

2 WHO WE ARE - About St John's

Our Vision and Values
Our Congregation
Our Parish
Our Team and Governance
Safeguarding

3 WHAT WE DO - Ministry at St John's

Our Services
Prayer
Discipleship
Volunteering to Support Church Life
Easter Events
Community at Christmas
Service in the Community

Children, Youth and Families
Weddings, Baptisms and Funerals
What People Say About Us
Pastoral Care
Music
Wider Church
Church Buildings

4 WHERE WE ARE GOING - The Future of St John's

Opportunities for Growth
Who God Might Bring as Our Next Rector
What Our Children Hope For
What We Can Offer Our New Rector

5 APPENDICES

Parish Boundary
Rectory
About Windlesham
Wonderful Windlesham
Governance Structure
Finances
Surrey Heath Deanery
Local Connections
Contact & Apply





Welcome



St John the Baptist, Windlesham

Loving God.

About people.

For you.

Welcome from Bishop Paul

It is a great privilege to live and serve in the Diocese of Guildford. Our part of Surrey and Hampshire (including a parish in London and Sussex) combines the stunning beauty of the North Downs with close proximity to central London. This makes it a highly desirable place to live. It has seen a considerable increase in population in recent years which continues to rise with extensive building of new houses.

We are a very friendly diocese with strong relationships across parishes, schools and chaplaincies. In the last five years, we have invested significantly in clergy wellbeing. We launched the wellbeing covenant in 2021 and, since then, we offer spiritual direction, clergy mentoring and pastoral supervision. We also provide clergy counselling when needed. As bishop, I take the love and care of clergy very seriously.

The Diocese has a strong vision rooted in **Transforming Church, Transforming Lives**. This was the result of considerable consultation in 2015 and was updated in 2023 when we discerned three priorities: **Growing Discipleship, Growing Diversity, and Growing Community**. Each parish is asked to consider what this overarching vision might mean in its local context and express it in a Church Development Plan.

There is significant support of parishes through the central team in Church House Guildford. In 2020, we launched the **Parish Needs Process**. This is our unique support system which recognises that each parish in the diocese is different and it seeks to journey alongside each one of them, supporting in a way that is rooted in particular needs - whilst seeking to build a supportive learning community across the diocese.

Building on training provision that has existed for some time in the Diocese of Guildford, in 2026 we launched **St Martha's College**. This seeks to support our parishes in equipping leaders for all sorts of ministries (including ordained ministry). Its most exciting recent venture has been the two-year Foundations in Ministry Programme which has seen over 120 people explore calling and formation.

Whilst we have seen considerable growth in many parts of the diocese over recent years, our greatest challenge since the pandemic has been recovery of ministry to children and young people. We are in the process of prioritising these areas – as we currently rewrite our children's strategy and have launched the **Youth Catalyst Programme** which is providing an exciting platform for young people to explore faith.

We are therefore always looking for clergy with a proven ability - or at least the clearest potential - in leading change, fostering a vocational culture and growing the church younger, so that our vision of a Transforming Church, Transforming Lives might be more fully realised.

The diocese has been blessed with very able leadership for the last decade through the ministry of **Bishop Andrew Watson**, whose untimely death in March 2026 caused considerable grief for us as a diocesan family. Inspired by his example, however, we are committed to continue to *'run with perseverance the race that is set before us, looking to Jesus, the pioneer and perfecter of faith'*.

Wishing you every blessing in your discernment – and please do not hesitate to get in touch with one of the archdeacons if we can help in any way.

+Paul.

The Rt Revd Paul Davies
Bishop of Dorking
& Acting Bishop of Guildford

Diocese of
Guildford 
Transforming **Church**
Transforming **Lives**



St John the Baptist, Windlesham

Loving God.

About people.

For you.

Welcome from Archdeacon Catharine

I'm so glad that you are setting out to read this Parish Profile for Windlesham. You'll find here details of a really wonderful opportunity to come and be Rector of a well resourced, active church in a very attractive village.

From traditional services with a strong choir, to contemporary family worship, and from a toddler group to a dementia café, St John's really does seek to provide a welcome for everyone. There is a genuine warmth about the community of St John's.

The parish was ably and consistently led by the previous incumbent, who enjoyed 15 happy years in the parish, and shared leadership with some excellent lay leaders. There is good governance in place, and the finances are sound. That said, there is a task to be done, in enabling the church to grow in faith and in numbers and to ensure a healthy future for the church in Windlesham. We are looking for someone who is a deeply rooted, faith-filled disciple and leader, who can walk with the people of St John's, encouraging them in their discipleship of Jesus, and enabling them to share his good news.

Are you someone who can walk with others, listening deeply, and also lead them in prayerfully discerning a Holy Spirit inspired vision for the future? Are you able to honour what has been and also help a community of faith imagine what could be? Are you able to lead a church through a time of change and growth and also care for the faithful who are already there? We would love to hear from you if you think this might be you!

If you would like an informal conversation and an opportunity to ask questions, please do not hesitate to get in touch, either by emailing catharine.mabuza@cofeguildford.com or by messaging 07785 990208

The Venerable Catharine Mabuza
March 2026



Welcome from the Wardens, Hannah and Brian



Welcome to the church in Windlesham. We really appreciate your interest in our parish.

We are excited about the opportunities ahead and are praying for the appointment of an inspirational new rector with a passion for discipleship and evangelism, with whom we can go deeper in faith, reach out to all in the parish and lead St John's into a new season of growth.

You will have a strong foundation on which to build including a supportive leadership team to help you lead change where needed, a great team of lay leaders and a loving church family rooted in faith, service, prayer and fellowship. You can read more on pages 31 and 32.

We pray you will find this Parish Profile helpful and would be very happy to have a chat on the phone, if you so wish, to help you discern whether God is calling you here - see the final page for details of how to get in touch.

Hannah & Brian

IS ST JOHN'S FOR YOU?

We are praying for a Rector who:

- ✓ has experience of growing congregations, motivating teams and leading change sensitively and well;
- ✓ is an inspirational preacher and communicator;
- ✓ has a deep and lived faith in Jesus Christ;
- ✓ is passionate about serving our local community, building our youth and children's work, making disciples and helping us all to share our faith;
- ✓ is pastorally gifted and committed to nurturing a loving and caring congregation.
- ✓ Someone with the energy and drive to help oversee exciting buildings projects in the next few years.



Who We Are

ABOUT ST JOHN'S



St John the Baptist, Windlesham

Loving God.

About people.

For you.

Our Vision and Values

LOVING GOD. ABOUT PEOPLE. FOR YOU.

Our desire is to create a welcoming environment where everyone can experience the tangible love of God in their lives.

We believe in a **loving God** whose love has been revealed to us through His son, Jesus Christ. As God's people, we seek to reflect that love in all that we say, think, and do.

Our church is for everyone. We believe that God's caring and compassionate concern for people has been evident throughout history. The church is **about people**, people like you, each on a journey of discovery with God.

We believe that God is **for you**, whatever your life situation or circumstances may be. Whether you are rejoicing, struggling or dancing through life, we pray that at St John's you will find peace and belonging; a family to walk alongside you throughout life's different chapters.



St John the Baptist, Windlesham

Loving God.

About people.

For you.

Our Congregation

WHERE WE ARE NOW

We are a committed church family. On Sundays we welcome around **70** regular worshippers, although numbers do fluctuate. Of these, approximately **50% are aged 70** or over, **42% are between 18 and 69**, and **8% are under 18**. While this highlights the strength and faithfulness of our older members, it also shows that we are a multi-generational congregation, even if younger age groups are currently smaller in number.

In 2025, our electoral roll stood at **105** people, with around a quarter of these living outside the parish in neighbouring towns and villages such as Sunningdale, Bracknell, Camberley and Lightwater. This reflects a congregation that is rooted locally, while also drawing people who value our church community from a wider area.

Many within the congregation take an active role in church life, contributing their time, gifts and experience, though, as with other churches, much of the day-to-day running and organisation

depends on a core of volunteers, whose commitment is both vital and deeply appreciated.

Alongside our Sunday worship, we hold a mid-week service. This service is attended most weeks by around **18–20** adults, predominantly in the **70+** age group, and provides an important spiritual and social lifeline for those who value a quieter, more intimate setting.

Our fellowship extends beyond the morning service, with much of the congregation choosing to stay for refreshments, strengthening bonds across the church family.

Overall, we are a faithful, caring and resilient church community, aware of our challenges but encouraged by the strength of our relationships and our shared desire to grow together in faith and fellowship with one another.



Our Parish



Windlesham is an affluent parish with a majority population that is white and aging.

The area has a high proportion of residents in higher professional occupations functioning largely as a residential base for professionals. Public transport links are limited and most residents rely on private transport.

Windlesham has a traditional village centre alongside more recent housing developments, with a further 500 homes planned on the edge of the parish.

CONNECTIONS

Situated 25 miles west of London

Close to M3, M25 and M4

Rail links to London 50 mins from Sunningdale

Heathrow airport is a 25-min drive

Limited public transport

POPULATION

Population 4,000

1,350 households

0-17 years 20%

18-64 years 54.6%

65+ years 26.7%

DEMOGRAPHICS

93.57% residents identify as White

There are low levels of deprivation

Housing is:
75% owner occupied
4.4% social rental
20.6% private rental

Source: ONS, 2021



Our Team and Governance

Our fully complemented, engaged and able PCC team is responsible for making decisions on all matters of general concern and importance to the parish including deciding on how the funds of the PCC are to be spent. The PCC meets regularly, at least monthly, and has oversight of wider ministry teams and leads with responsibility for taking forward the priorities identified in the Church Development Plan. The plan is refreshed bi-annually through the diocesan Parish Needs Process and is supported by the Area Dean and the diocesan Mission Enabler Team.



Day-to-day mission, ministry and operational decisions of the parish are led by the Ministry Leadership Team comprised of the rector, churchwardens, **Hannah** and **Brian**, Pioneer Community Worker, **Kate** and Children and Families Worker, **Marijke**.

The Parish Office comprises a small number of part-time paid staff members with **Claire**, **Guy** and **Esther** covering parish, premises, buildings-hire and finance functions. This team provides essential support across different areas of church life and we are grateful for their skills and their energy. The Parish Office is open 9.30am -1.30pm Monday, Tuesday, Thursday and Friday.

A Standing Committee meets bi-monthly to report issues and progress following PCC meetings. The team includes the leadership team, Treasurer, **John**, PCC Secretary, **Karen**, Parish Safeguarding Officer, **Fiona** and key PCC members.

A number of amazing volunteers provide support through prayer, pastoral assistance and hospitality, as well as premises, technical support and care services.

For further details see the Appendices.



Safeguarding

Our Safeguarding Team, led by **Fiona**, works to embed safeguarding and inclusion into the culture of St John's, leads our Safeguarding Sunday service and safeguarding spotlights, and values feedback from our church family to ensure ongoing safety and wellbeing.

At St John's, safeguarding is a priority and shared responsibility. We are committed to providing a safe, welcoming and respectful environment for all, especially children, young people and vulnerable adults. We believe everyone has the right to feel safe, valued and heard, and we take our duty of care seriously.



Our policies follow the CofE National Safeguarding Standards, promoting wellbeing, preventing harm and ensuring appropriate responses to concerns. The Parish Safeguarding Officer works closely with the Rector and Wardens and reports to the PCC at each meeting, with the Safeguarding Dashboard supporting good practice and compliance.

All concerns relating to children or vulnerable adults are recorded electronically and referred to the diocese within 24 hours, with guidance sought from the Diocesan Safeguarding Advisor. We are committed to safe recruitment and safer working practices, and any new regulated activities are reviewed by the PCC, including risk assessments and recruitment requirements.

Regular hirers of the church and The Link rooms that adjoin the church and St John's Hall, complete and maintain safeguarding documentation, overseen by the PCC.

Fiona, Parish Safeguarding Officer



What We Do

CHURCH LIFE



St John the Baptist, Windlesham

Loving God.

About people.

For you.

Our Services

Church life at St John's, is varied and vibrant, offering a range of worship styles and activities to meet the diverse needs of our congregation.

Services are streamed online via our YouTube channel, and everyone is welcome to join for prayer during services and refreshments afterwards to continue fellowship.

CURRENT SERVICE PATTERN

- ✓ **First Sunday:** Two services take place at the same time. In church, we offer traditional worship with organ and choir, with clergy robed in alb and stole. In the hall, a contemporary service is held, with a more informal style of worship.
- ✓ **Second and Fourth Sundays:** Less formal services in church, lay-led, combining traditional hymns with contemporary songs. Morning services are non-eucharistic during our vacancy, with a Said Communion at 4.00 pm.
- ✓ **Third Sunday:** Children's service in the hall, with more formal adult worship in church.
- ✓ **Fifth Sunday:** Often special services, such as Palm Sunday, APCM, Summer Praise and the Advent service.



We look forward to working with our new rector to create a more consistent worship pattern, possibly with both traditional and contemporary services every week to help us reach a wider range of age groups.



Prayer

St John's is a place where we come together with open hearts to seek God's presence, guidance, and peace through prayer. Prayer is central to our life as a church, and we aim to nurture it both in worship and beyond. We have a dedicated prayer ministry team who meet regularly to listen to God, discern the prompting of the Holy Spirit, and pray together, supporting the wider prayer life of our church.

Within our worship services, prayer is woven into the fabric of our gatherings. An experienced team offers a range of intercessions tailored to the different styles of our public worship. Beyond formal services, we are strengthening our prayer life across the church with the appointment of a **Prayer Coordinator, Frances** whose initial focus is to help us in praying together during the vacancy and the discernment of our next incumbent.



Prayer at St John's already takes many forms and we would love to go deeper in prayer and in exercising spiritual gifts.

Prayerline provides a confidential way to share concerns by text or email, with a committed team praying for each request.

Prayer trees within the church allow individuals to add their prayers and fill the branches.

Prayer stations around the church give people suggestions for things to pray for.

Online **Closer to God** sessions offer an intimate space to reflect and pray using the principles of *Lectio Divina*, focusing on Scripture and discerning God's message.



Discipleship

Discipleship is an area we are seeking to grow and strengthen within our community life, as we encourage one another to deepen our faith, understanding, and service. Our **home groups** meet regularly to pray, worship and study the Bible. While many members do not attend Sunday services regularly, these groups form a vital part of discipleship, and we are keen to encourage more of our worshipping congregation to join and benefit from the fellowship and learning they offer.

Each year during Lent, we run a mid-week teaching series that combines discussion, prayer, and reflection on a chosen theme. In the past, we have explored films, TV series, and books such as **From Now On** by Rachel Mann. These courses provide a space to engage with faith in creative and thought-provoking ways, helping people deepen their understanding of God's word and its relevance to daily life.

From time to time, our ministry leadership team leads small-group teaching series, including **The Bible Course** and the **Care for the Family** parenting course. These have been well attended and highly valued. We hope to expand such opportunities in the future, though resourcing them fully has been a challenge.

It's Your Call is a course designed to help members discern how God is calling them to serve within the church family. Participants have benefitted from both diocesan-led events and courses arranged locally at St John's, encouraging practical steps into ministry and mission while nurturing spiritual growth.



Volunteering to Support Church Life



WELCOME



CHOIR



CORPORATE
PRAYER



FLOWERS



GARDENING



HOSPITALITY



MUSIC



READERS



SJB KIDS



SPECIAL
EVENTS



STEWARDSHIP



TECH / AUDIO



Easter Events

Our seasonal services and events are designed to be accessible to all, bridging the gap between our church family and the wider community, particularly during the Easter period, one of the most sacred and significant seasons in the Christian calendar.

From the popular **Pancake Café** on Shrove Tuesday to our **Agape Meal**, we value the opportunity to share food and friendship.

During Holy Week, we offer a range of reflections, including our **Good Friday** Hot Cross Bun service and the **Stations of the Cross** display. We also hold a **Sunrise Service** on Easter morning followed by breakfast ahead of our **Celebration Service**. These interactive experiences are well-attended by a cross-section of the community, and we are keen to continue expanding our worship offering to encompass the varied preferences and experiences of those we serve.



Community at Christmas

Christmas provides a significant opportunity for outreach, attracting many who do not regularly attend Sunday services.

Creative events like **Wreath Making** and our **Community Carols**, held in partnership with local businesses and the Field of Remembrance Trust, allow us to share the Christmas story in informal settings.

Our more traditional offerings, such as the **Nine Lessons and Carols** and the **Christingle**, remain highly valued.

The **Christmas Eve Nativity** continues to be our most popular event. With around 200 people attending for worship and hospitality, these occasions are essential for nurturing relationships and inviting our neighbours into the life of the church.



Service in the Community

At St John's, our community initiatives are central to our mission, providing welcoming spaces where local residents can connect with the church and one another.

- ✓ The **Dementia Café** is a vital part of this outreach, offering a safe and supportive environment for those living with dementia and their carers. These bi-weekly sessions, supported by a dedicated team of volunteers, provide a relaxed space for families to share experiences over coffee and cake.
- ✓ Our **Holiday at Home** seasonal program serves our older neighbours through film shows, musical afternoons, and local outings—such as visits to Rosie's tea room—ensuring that fellowship and care remain available throughout the year.
- ✓ The much-loved **Parish Magazine**, published bi-monthly and circulated to 900 households, is led by a team of volunteers at St John's. Now in its 48th year of publication, this is the go-to for residents on Parish news and activities.
- ✓ **Windlesham Caring** is a lifeline to many isolated residents, giving them support with lifts to appointments, help with shopping and more.



Children, Youth & Families

We are passionate about nurturing the next generation and creating a church where children and young people know they belong. Our ministry combines joyful Sunday discipleship, strong partnerships with local schools, and meaningful community outreach, helping families encounter faith in ways that are relational and rooted in everyday life. We need to grow our youth work so the faith of our growing children is nurtured more.



SUNDAY FAITH AND FUN

Through age-specific groups and our lively SJB Kids Service, we create engaging, child-led spaces where young people can explore faith with joy, creativity, and confidence.

SCHOOL PARTNERSHIPS

By working closely with Windlesham Village Infant School and Connaught Junior School, we maintain a strong presence in our local schools through assemblies, curriculum support, and pastoral engagement.

MA'MITES

Our Ma'Mites baby and toddler group welcomes 25–30 families each week, offering friendship, support, and an accessible first point of connection into church life.

We need help to grow our children, youth and families work through our current church activities and new initiatives.



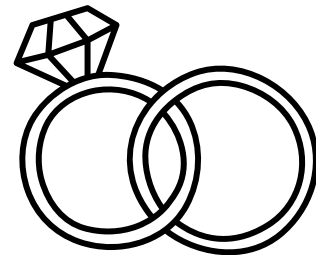
Weddings, Baptisms and Funerals

It is always a genuine privilege celebrating significant milestones with families in our community. In 2025 we supported many families with funerals as they grieved the loss of loved ones and we joined in the joyful celebrations of 4 weddings and 7 baptisms.

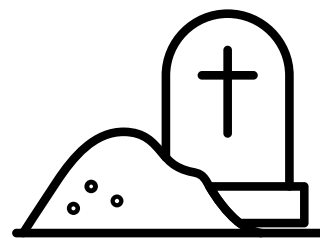
The neighboring cemetery is the responsibility of the Parish Council.



7 baptisms



4 weddings



13 funerals



What People Say About Us

DEMENTIA CAFE

I attended a recent meeting of the 'Dementia Café' for carers and family members living with dementia. I know that many people in this situation may feel alone with the problem, but I also know that talking and sharing with others, on or off the subject, is very helpful — especially with kind people providing coffee (or tea) and excellent home-made cakes.

TONY

REGULAR HIRE GROUP

Park Opera enjoys a close connection with St John's Church. We regularly rehearse in the Church Hall, which is an excellent venue with first rate facilities. We always enjoy singing there as the Church has excellent acoustics and a lovely atmosphere. St John's Church is very welcoming!

PARK OPERA

VISITOR

A beautiful building with a wonderful atmosphere - such a place of peace.

SONIA

PANCAKE CAFE

I would like to thank all those concerned in providing the Pancake Café on Shrove Tuesday. It was very well arranged with plenty of tables laid in the Link and the most delicious pancakes being continually served with accompaniments of strawberries, blueberries, lemons etc. and tea and coffee. You all worked very hard to provide such an enjoyable experience. Thank you,

PATRICIA

WREATH MAKING

Many people asked for a 'Thank you' to Kate Howard for organising the wreath making evening at the end of November, which was a great success. The front doors of many Windlesham houses (and beyond) were beautifully decorated and the evening has become a much-enjoyed Christmas tradition.

MA'MITES

So grateful to have found Ma'mites. Everyone is so welcoming, the staff are all lovely and its very well organised (and catered for!).

MUM



Pastoral Care

Pastoral care offers a safe and loving community where healing, encouragement, and spiritual growth can flourish through the shared ministry of clergy and volunteers.

HOME COMMUNION

We ensure that those who are housebound or in care or retirement homes remain connected to our worshipping life by bringing Holy Communion to them, sustaining their sense of belonging within the parish.

HOME AND HOSPITAL VISITING

Clergy and trained volunteers visit people at home or in hospital to offer prayer, listening, companionship, and, where appropriate, communion, especially during times of illness or transition.

MEAL ROTA

Meal trains provide practical support to families during demanding times such as after a birth or illness, expressing our commitment to caring for one another in everyday life.

WINDLESHAM CARING

Through volunteer drivers, help with shopping, and friendly telephone contact, the charity serves those in need. Established as a separate charity, but closely affiliated with St John's for safeguarding and financial oversight, the committee has both church and non-church volunteers (the current chair is one of our church wardens) offering further opportunities to strengthen our pastoral ministry.



Music

Musical worship is a much cherished activity at St John's. We are blessed with a gifted community who delight in sharing their talents, enriching our worship and helping us connect more deeply with God. Our approach embraces a variety of musical styles, reflecting both tradition and contemporary expression.

Our much-loved church choir leads worship in traditional services and is a highlight during Christmas, Easter, and other key celebrations in the church calendar. We are supported by an excellent organist whose skill enhances the depth and beauty of our services. Complementing this, our worship group brings a more contemporary or blended style, featuring keyboard, guitars, and vocals, helping to engage a wide range of worshippers.

While our new rector does not need to be musical, a deep appreciation of music in worship is welcomed. Through hymns and songs, we celebrate God's goodness, reflect on His faithfulness, and open ourselves to the movement of the Holy Spirit.

As our church grows, we hope that our musical worship will continue to flourish, deepening our faith and strengthening our bonds with God and with one another.



Wider Church

SUPPORTING OTHERS

Our faith calls us to look beyond ourselves and to serve those in need locally, nationally and internationally. Each year the PCC designates **three or four charities** to receive our financial support, reflecting a balance of local initiatives, national organisations and global causes. We raise funds through seasonal events and special appeals, and regularly support practical needs such as food provision for local charities like **Besom** in Camberley.

We are grateful for a generous and active giving ministry that reflects our desire to share God's love in tangible ways. As we look to the future, we remain committed to sustaining this outward-facing generosity while stewarding our resources wisely and responsibly.



OUR ECO CHURCH JOURNEY

We believe that caring for God's creation is part of our Christian calling. We are pleased to have achieved the **Bronze Eco Church Award** from A Rocha UK, recognising the practical steps we have taken across worship and teaching, building management, land care, community engagement and lifestyle. This reflects our commitment to embedding environmental responsibility into the life of our church.

The Bronze Award marks the beginning of an ongoing journey. Though still an aspiration, we'd love to achieve the Silver Eco Church Award, deepening our commitment to sustainability and ensuring that care for creation remains central to our mission as a church that seeks to nurture both people and the environment.



Church Buildings

St John's Church is a beautiful 19th-century double-aisled building, featuring a prominent bell tower and clock. While the church is regularly maintained, its age of approximately 150 years means it requires ongoing care to ensure the fabric of the building remains safe and suitable for regular use.

The church hall, now some 56 years old, is also showing signs of age. Constructed at a time when building regulations were less stringent than today, the hall has developed subsidence and cracking in its retaining walls. These issues have been closely monitored over the years, and, on the advice of our church architect, action will need to be taken to repair or rebuild the hall.

Addressing the church hall is a key priority for the immediate future. Fundraising efforts are underway to enable these essential works, which must be completed before any other re-ordering or development projects within the church can proceed.

Further details about the church buildings and grounds can be found in the Appendices.



Where we are Going

THE FUTURE OF ST JOHN'S



St John the Baptist, Windlesham

Loving God.

About people.

For you.

Opportunities for Growth



At our Parish Vacancy workshop we identified core areas and opportunities for us to grow as a church. We pray that our new rector will work with us to grow in these areas, and we recognise that some are key priorities and will happen sooner than others.

PRAYER AND WORSHIP

- Praying, corporately and regularly, driving spiritual growth in individuals, families, and groups.
- Becoming more Spirit-led in our worship and confident in using spiritual gifts to bless others.
- Using all forms of musical worship to reinforce spiritual habits as a shared expression of faith.
- Foster strong relationships with whole families, giving them a positive experience of faith and church life, with worship at the heart.
- Focus on growing the congregation and ensuring worship engages and inspires all generations.
- Build a strong sense of community and belonging in church, ensuring a welcoming atmosphere for all.

DISCIPLESHIP & EVANGELISM

- Encourage stronger faith foundations in prayer and mission through development of small group offerings.
- Strengthen home groups, ensuring they are open and welcoming to all, deepening faith, discipleship and fellowship and are equipped to reach out into the wider community.
- Make use of available diocesan resources to offer quiet days of reflection and study days.
- Ensure the PCC is a model of discipleship, demonstrating prayerfulness and pastoral sensitivity and interacting well with the congregation.



Opportunities for Growth



COMMUNITY

- Make church the centre of our community, founded on relevance, trust and a tangible presence.
- Strengthen links with other churches and local organisations, offering space, support, collaboration and steadfastness.
- Support charities, locally and globally.
- Increase visibility in the community and develop 'Touch Points' to give opportunities to welcome others on a journey in faith.

FACILITIES

- Discerning essential building works, improving lighting and use of technology, and developing buildings that are welcoming and accessible to all.
- Implement practical measures in line with the Church of England's environmental policy, including improving energy efficiency and making responsible, sustainable choices in the care, use and development of church buildings.

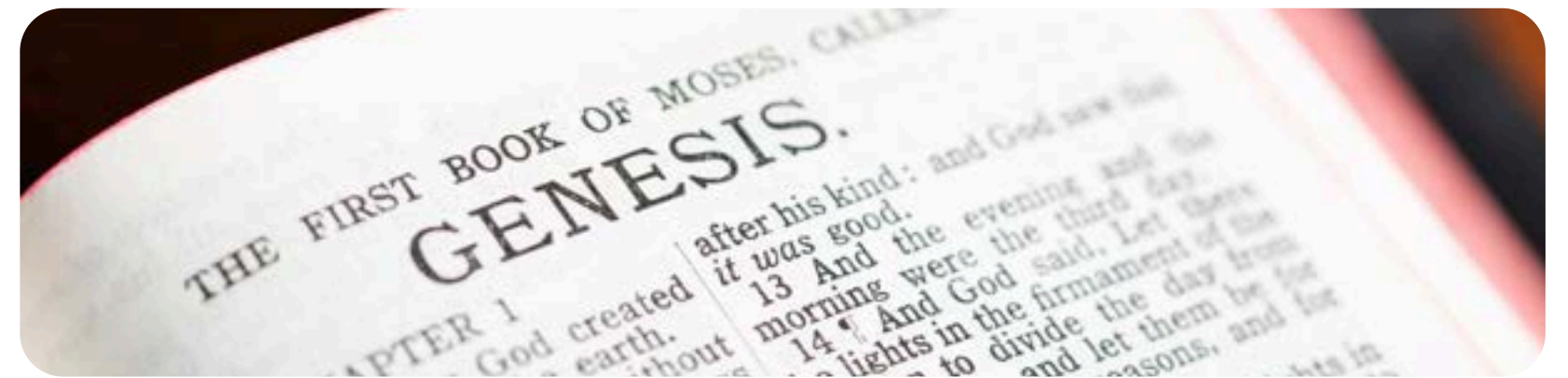


Who God Might Bring as Our Next Rector

Through prayer, discussion and reflection we have considered the qualities and gifts we hope to see in our next Rector. Building on the opportunities described in the previous pages, we are seeking someone who will help guide and encourage us as we continue to grow as a church and serve our community.

WE SEEK SOMEONE WHO IS:

- Deeply rooted in faith, who will nurture our spiritual life through prayer, worship and thoughtful preaching.
- A clear and engaging communicator, able to bring scripture to life and help people connect faith with everyday living.
- Passionate about engaging with the wider community, building relationships with local schools, organisations and village groups.
- Experienced at managing change sensitively and empathetically.
- A collaborative leader, who works closely with the PCC, clergy colleagues, volunteers and lay leaders to develop and sustain ministry together.



- Encouraging and empowering, helping members of the congregation to discover and use their gifts in the life of the church.
- A compassionate pastor, who listens and values the importance of pastoral care and is attentive to the needs of individuals and families.
- Able to inspire and guide us, discerning opportunities for growth while building on the strong sense of community already present at St John's.
- Approachable and relational, able to build trust and create an atmosphere where people feel welcomed, valued and included.
- Able to harness the energy of our church family to move us forwards to growth and a deeper communion with the Holy Spirit.

We recognise that no single person will bring all these qualities perfectly. We are open to someone who is still developing in some areas but who shares our desire to grow in faith and ministry together.



What Our Children Hope For

We asked our children what they would like in our new Rector. Their responses were thoughtful and heartfelt, emphasising kindness, fun, fairness and being truly listened to.

OUR CHILDREN HOPE FOR SOMEONE WHO IS:

- Loving, kind and patient.
- Smiles, is welcoming and listens to children.
- Enjoys the sound of children playing and feels comfortable with noise and activity.
- Has a good sense of humour and is fun to be around.
- Helps people and treats everyone with care and respect.
- Includes children in church life, values their voices and ideas, and helps them feel they belong.

FAMILIES ALSO HOPE FOR A RECTOR WHO:

- Leads or supports children and young people's sessions and activities.
- Makes church a place where children and young people feel safe, included and at home.
- Is flexible, backs people up and follows through with action.
- Is fair, not too strict, and able to explain decisions clearly.
- Includes children and young people in church life, values their voices and ideas, and helps them feel they belong.



What We Can Offer Our New Rector

St John's is a welcoming and supportive parish with a strong sense of belonging and community spirit.

As our Rector you will find:

- A congregation committed to worship, prayer and serving others.
- A church community that values pastoral care and mutual support.
- Dedicated volunteers who contribute generously to many areas of church life.
- A PCC that is keen to work collaboratively with the Rector in shaping the future of the parish.
- Opportunities to engage with families, children and people of all ages in the village.

We hope our new Rector will bring their own gifts, vision and enthusiasm as we continue to grow together in faith and in service to our community.



Appendices

SUPPORTING INFORMATION



St John the Baptist, Windlesham

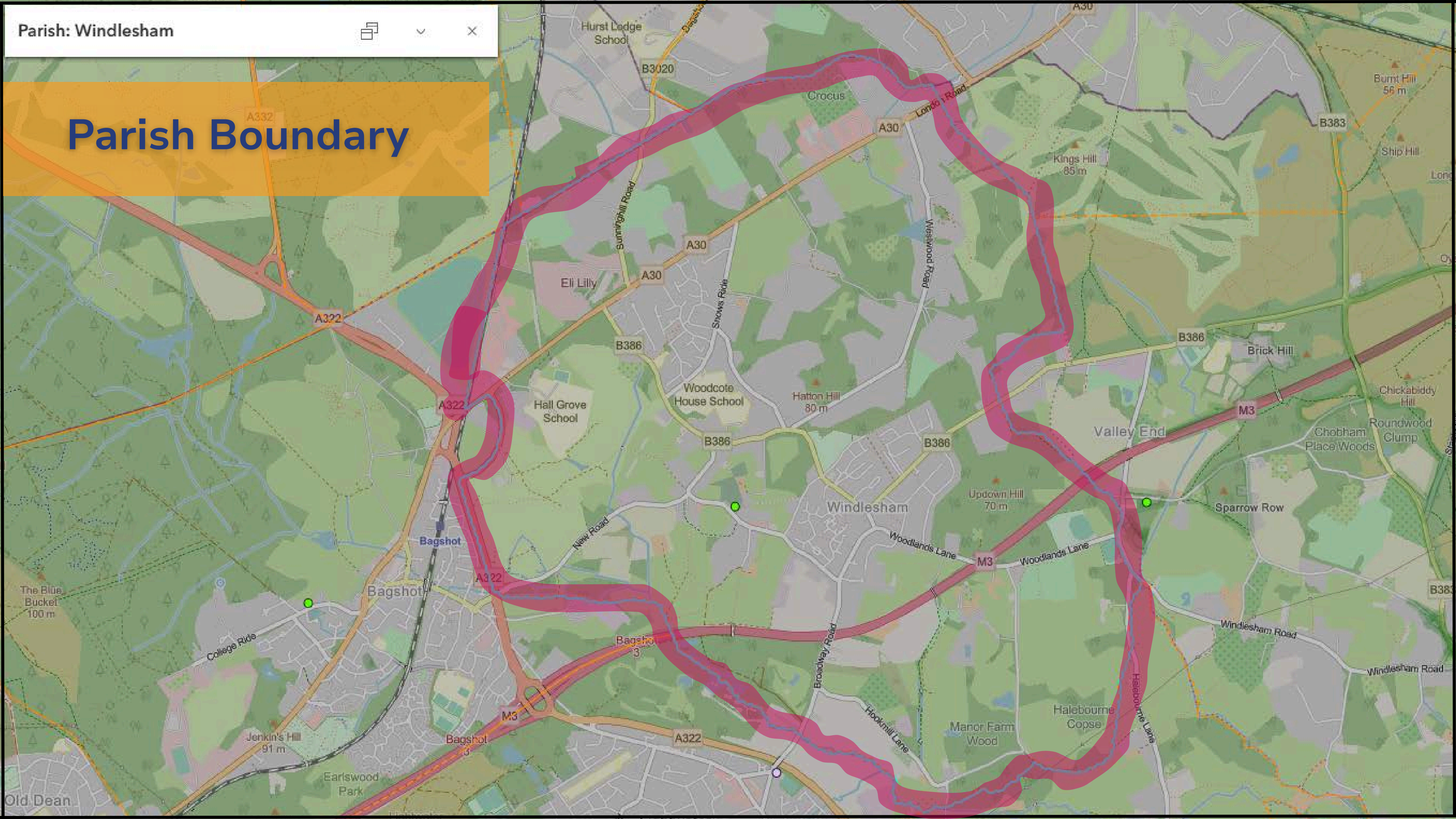
Loving God.

About people.

For you.



Parish Boundary



The Rectory

The sale of the existing rectory, situated on Kennel Lane, is being considered as part of the Diocese of Guildford's wider property strategy.

In close consultation with the diocese, we are investigating whether there may be better options in Windlesham, in terms of house specification and location, for our new rector.

Should the sale of the current rectory be approved, the diocese is committed to providing a home in Windlesham, suitable for the next incumbent and in line with diocesan guidelines.

The sale of the existing rectory and the acquisition of a new property are not co-dependent, and we are working together to ensure the situation is addressed in good time for the arrival of our new rector.



About Windlesham

Windlesham is located within the Surrey Heath borough on the Surrey/Berkshire border, close to Sunningdale, Ascot and Camberley. Windlesham Parish Council has just become a separate Parish serving around **4,000** Windlesham residents.

The village is well connected, with rail services to London Waterloo from nearby Sunningdale, Ascot, Bagshot and Camberley, and easy access to the M3, M4 and M25, as well as Heathrow Airport.

Windlesham's history dates back to **1178**, with further reference in the Woking Hundred of **1332**. There has been a church on the present site of St John the Baptist Church, Windlesham for centuries. Rebuilt in **1680** after a fire and again in the nineteenth century, the current Grade II listed building has been in continuous use since.

A church hall was added in **1969**, and in **2000** a two-storey extension, known as "The Link," connected the church and hall, creating the largest community facility in the parish.

The **2021** Census records an equal proportion of males and females, with over **50%** identifying as Christian and **90%** born in the UK. The average age is **41.5**, with **23.8%** aged **65+**, **56.6%** aged **18–64**, and **19.6%** aged **0–17**.

Windlesham is relatively prosperous, with around two-thirds economically active, many in managerial, professional or technical roles. The church works closely with local organisations to support older residents and provides services both within its buildings and through Windlesham Caring, as outlined elsewhere in this profile.



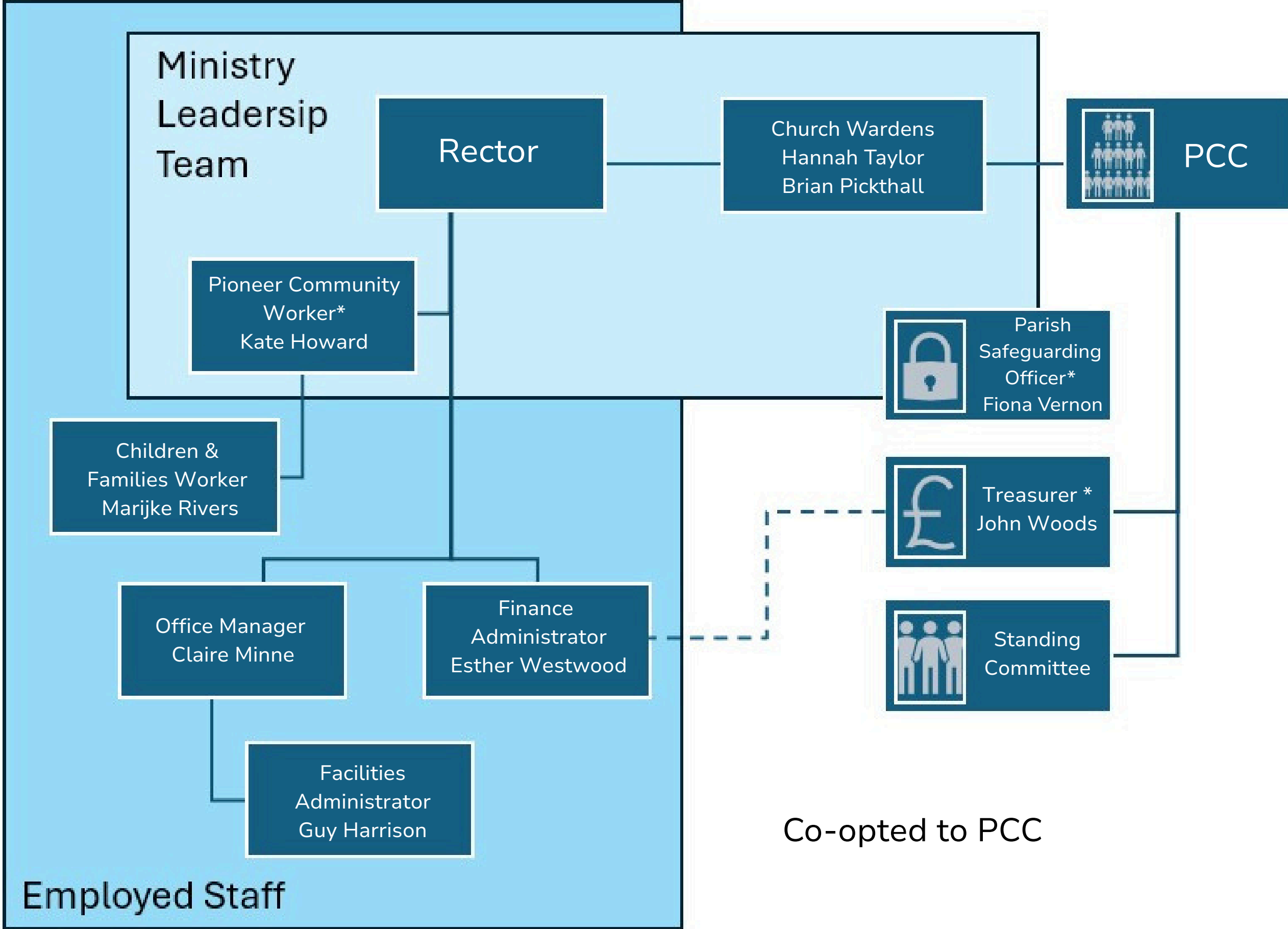
Wonderful Windlesham



Governance Structure

St John's is the only church in the geographic boundary of Windlesham.

The benefice comes under the patronage of King Charles III.



Co-opted to PCC



Finances

St John's has a strong tradition of faithful stewardship and financial responsibility. We have consistently met our full Parish Share commitment (2025: £96k), reflecting both our commitment to the wider Church and the generosity of our congregation.

Like many churches, we are experiencing the impact of rising costs alongside a gradual reduction in regular giving as the number of active members changes. In recent years this has resulted in manageable deficits: **£17k in 2023, £8k in 2024, and a projected £9k in 2025**. While these figures require attention, they also demonstrate the PCC's careful oversight in limiting losses and responding thoughtfully to changing circumstances.

We are grateful that, on occasion, additional or unexpected income has helped strengthen our year-end position. At the same time, we recognise the importance of building a more sustainable financial model that does not rely on unforeseen contributions.

Encouragingly we hold restricted reserves of **£269k** and a further **£281k** of unrestricted funds. The overall position reflects prudent

financial management over many years and provides a solid foundation as we plan ahead.

Our principal areas of expenditure, Parish Share and employment-related costs, directly support our mission and ministry. While these commitments leave limited scope for major savings, they represent investment in the life and outreach of the church.

Looking forward, we see genuine opportunities to grow income through increased use of our facilities and through events that both serve the community and generate surplus funds. With thoughtful planning and energy, these avenues offer positive potential.

Necessary repairs and refurbishment of the hall will require creativity and determination, particularly in seeking grants and developing targeted fundraising initiatives. Rather than a burden, this represents an opportunity to renew and enhance our facilities for future generations. Over the next two to three years, strengthening our financial sustainability while investing in our mission and buildings will be an important and hopeful focus for the PCC and congregation alike.



Surrey Heath Deanery

St John's is part of the Deanery of Surrey Heath, within the Diocese of Guildford's Archdeaconry of Surrey, with a total of 13 parishes (including the new parish of St Barbara's, Deepcut).

Our Area Dean is Revd Ellen Turtle; our Lay Chair is Mr Howard Mason.

We come together as churches in shared mission, prayer, collaboration and mutual support across parish boundaries.

We believe St John's has an important role to play in continuing to develop relationships and inter-working across the Deanery.



St John the Baptist, Windlesham

Loving God.

About people.

For you.

Local Connections

ORGANISATIONS

Lightwater Surgery
Surrey Heath Borough Council
Windlesham Club & Theatre
Windlesham Field of Remembrance
Windlesham Parish Council
Windlesham Society

EDUCATION

Bagshot Infant School
Charters School
Collingwood College
Connaught Junior School
Fernways School
Hallgrove School
Kings International School
Little Villagers Pre-School
Puffins Pre-school and Nursery
Rainbow Corner Day Nursery
Surrey Schools and Learning
Valley End School
Windlesham Village Infant School

AMENITIES

Bella Vie
Windlesham Dental Care Centre
Haven of Beauty
Hill View Store & Post Office
Pharmacy
Quality Meat Company
Salon 38
Savannah Gift Shop
Suttons Convenience Store
Windlesham Barbers
Windlesham Vet
Windlesham Wines

CLUBS

Girlguiding
Scouts
The Art Society Windlebrook
Windlesham Bowls Club
Windlesham Darby & Joan Club
Windlesham Golf Club
Windlesham Tennis & Pickleball Courts

ANNUAL VILLAGE EVENTS

Boxing Day Pram Race
Christmas Light Switch On
Windlesham Summer Picnic
Windlesham Village Summer Fete

CHURCHES

All Saints' Church, Lightwater
Christ the King RC Church, Bagshot
St Anne's C of E Church, Bagshot
The Brook Church, Bagshot

EAT & DRINK OUT

Fieldhouse Coffee Shop
Rashoi Restaurant
The Bee Pub
The Brickmakers Pub
The Half Moon Pub
The Sun Pub
The Surrey Cricketers Pub
The Windmill Pub



Contact & Apply

For more details and to apply please visit:
www.cofeguildford.org.uk/clergyvacancies

If you'd like to learn more or have an informal conversation, please get in touch with [Hannah Taylor](#) or [Brian Pickthall](#).

To apply, visit the [COE Guildford website](#)

Closing date for applications: **5th May 2026.**
Interviews: **10/11th June 2026.**

ADDRESS

St John the Baptist Church
Church Rd, Windlesham GU20 6BL

WEBSITE

www.windleshamchurch.org.uk/

EMAIL

office@windleshamchurch.org.uk

PHONE

01276 489408

