



Fawkham and Hartley Parish Profile




Rural North
West Kent
Group of Churches

Contents

| | |
|-------------------------|----|
| Welcome | 3 |
| Talents we seek | 4 |
| What we can offer | 5 |
| About the Parish | 6 |
| About the Church | 8 |
| Church in the Community | 14 |
| About the Finances | 18 |
| About our Buildings | 20 |
| The Rectory | 23 |



Welcome to our Parish Profile

Our PCC and congregation pray that this will give you a real sense of who we are and guide you in deciding if our Parish is the right place for you to grow and develop in your ministry.

We are looking forward to discovering the person God is calling to be our new Priest in Charge and lead us into the future.



Talents we are seeking

- We are seeking an enthusiastic priest who will work creatively with us to move forward in a variety of areas to grow our church in numbers and in faith.
- It is important for our next priest to be a 'people person', able to relate to all ages and backgrounds; someone who has a friendly, empathetic and welcoming attitude towards all, with a good sense of humour and fun.
- We are looking for an approachable and encouraging leader, called by God, to nurture our faith.

Our aspirations for the future

- Our congregation is principally made up of retired people and we are concerned about the future as the numbers of our parishioners and our team of volunteers decreases. However, we are prepared to change, grow and serve.
- We would like our new parish priest to help us explore ways of attracting families and their children to join our church family and discover how God can enrich their lives, through outreach in the community.

Do you think God is calling you to journey with us, to develop our talents and explore our spirituality?



What we can offer you

- A friendly and enthusiastic congregation who will continue to help in the ongoing running of our Parish.
- Two church wardens and a full and active PCC, which meets regularly to assist with the management of the parish.
- A warm and welcoming local neighbourhood with good local schools, and easy access to a variety of recreational facilities, including a country club in the village which has many active sports sections.
- A large, comfortable Rectory, situated in the heart of the Parish
- Friendly parishioners who will be delighted to help you to settle in, find your way around the area and get to know our people and places.
- A Parish Office within the Church Centre, which is next to the Rectory, and the support of a part-time Parish Administrator (20 hours a week), who is also our safeguarding officer and ensures all necessary training and DBS checks are up to date.
- Active volunteers contributing their skills and time to maintaining and nurturing our Christian community.
- Our support and encouragement in your personal and spiritual development, respect of your privacy and your personal time.

We very much look forward to joining you in new initiatives, walking joyfully alongside you as we seek new ways to serve God.

About the Parish

Location

The information about demographics in this section has been obtained from the Church of England Research and Statistics website and UK Government statistics available online.



Demographics

The population of Fawkhams and Hartley is around 5,750. The percentage of under 18s in our Parish is 19%, 2% lower than the national average and our percentage of 18 – 65 year olds at 56%, is also a few points lower than the national average, leading to



a higher percentage of over 65 year olds. This goes some way to explaining the age range of our worshippers which is skewed towards the older generation, many of whom have been parishioners for some years.

Overall Deprivation

The overall amount of deprivation in our Parish is relatively low, when taking into account the majority of households. However, we do have an area of social housing within Hartley.

Our Parish makes two weekly contributions to our local food bank which serves several parishes in our area and currently supports about 250 families.

Housing

There are approximately 2,200 households in Fawkham and Hartley. Most are owner occupied but rented social housing makes up 10% of local housing stock. The local authority is Sevenoaks District Council.

There are local authority proposals to build a development of dwellings under discussion but these are fiercely opposed locally, due to the

significant impact on the character of, and lack of sufficient infrastructure in our villages.



Transport

Nearby Longfield station is serviced by trains to London Victoria, the Medway towns and the Kent coast. Ebbsfleet International station is 10 -15 minutes drive away with high-speed links to London and into Kent but the international services to Paris and Brussels have ceased stopping there since the Covid pandemic. Bus services in the parish have recently been cut, despite local opposition, but there is also a school bus service.

Our Rectory, next to the Church Centre, is situated fairly centrally within the Parish which covers approximately four square miles. St Mary's Church in Fawkham is a mile away, All Saints' Church in Hartley just over half a mile and our sister church, St Mary Magdalene, Longfield, a mile and a half. Access to private transport is probably essential for our incumbent.

About the Church

The Parish of Fawkhams & Hartley



The Parish of Fawkhams & Hartley is part of the Rural North Kent Group of Churches. Fawkhams & Hartley is itself an historical amalgamation of the two parishes and we would describe ourselves as central, liberal and inclusive. For all church services our priest is usually robed.

We work with the other parishes in the RNWK Group, Longfield, Ash and Ridley to share resources and support each other in ministry and outreach.

Joint activities include the planning of service rotas, confirmation, Lent courses and Bible study groups. pre-Covid we also shared monthly Group Messy Church sessions and had a small Youth Group which met monthly. Our youth offering now needs re-invigorating.

Our Parish is also an active member of the Cobham Deanery.



Worship and Ministry Support

The RNWK group has a team of both ordained and lay ministers, who, together with volunteers from their congregations, collaborate to enrich and support the whole area and lead services across the group and collaborate and support each other in outreach to the community.

Our group service schedule is planned by the RNWK group clergy every four months. It is then reviewed by the PCC and populated by the lay clergy and our small team of relevant volunteers:- altar servers, readers, intercession writers, welcomers, music co-ordinator, organists, bell ringers, etc.

Our Parish has a part-time Parish Administrator. The role is split

between supporting the PCC and incumbent in the smooth running of the Parish, including the funerals, weddings and other special services which the Parish holds.

The RNWK Group has two Anna Chaplains, who specialise in the pastoral care of older people.

The Occasional Office figures for 2022 to end November are:

Baptisms - 10

Weddings - 10

Funerals - 22

Interments - 20



About the Church

'Our Church gathers to share God's Love'

Sundays

Our church congregates to enjoy worship together every Sunday morning. Our recent monthly pattern of Sunday worship has been a traditional Sunday morning service in each church on alternate weeks and on the Sundays between, a service of less formal worship at the Church Centre, one of which includes Sunday

Club. There is a Songs of Praise service in the afternoon on the third Sunday of the month, held at All Saints' Church in summer months and the Church Centre during the winter.

The average number of those attending our services on a Sunday is between 25 and 30.



Group Mid-Week Communion

On Wednesday mornings a group gathers for a simple service of Holy Communion. This alternates around the different worship centres of the

RNWK group.

Morning Prayers are currently held on weekdays twice a week at St Mary's Church.

Special Services

Our regular worship pattern is adapted and enriched to support the service patterns of the liturgical year.

A Good Friday walk of witness around the local churches, followed by a family service in the Church Centre.

Easter Morning - Dawn Service at St Mary's - Family Communion

Remembrance Sunday - Church Service and ecumenical outdoor

services at our two village war memorials

Advent - Christingle Service and Nine Lessons & Carols Service

Christmas Eve - 11 pm
Midnight Communion

Christmas Morning -
Family Communion

Live-Streamed Services

Our Church Centre is equipped with the facilities to live-stream events. Our two Sunday monthly services at the Church Centre are streamed live and can also be viewed on YouTube during the following days.

We adhere to all safeguarding and privacy procedures when live-streaming. A link to our historical live-streamed services can be found by entering Rural North West Kent Group of Churches into 'search' in YouTube.

Youth and Children's Services

We have re-introduced Sunday Club for primary school children during one service a month at the Church Centre.

We would like to encourage more leaders for our children's and youth

activities, so that we can welcome young families and their children to become part of our church family.







About the Church

Our Church in the Community

We have enthusiastic volunteers who assist the clergy, at parish and group level, in support of the community, within the parameters of the safeguarding directives (where not appropriate in person, then by telephone) eg. pastoral care of the bereaved, housebound, isolated and elderly. The Parish holds church

services for the two local residential care homes.

At the beginning of November we hold a Departed Loved Ones service at St Mary's church and specifically invite the families bereaved in the last year to attend.

Links with Local Schools

Fawkham Primary School is a Church of England school and therefore the Priest in Charge of our parish is invited to sit on the board of governors together with lay representatives. He/she will work closely with the head teacher and, together with other members of the preaching team, will be asked to lead school assemblies.

The Parish also has a close relationship with Steephill School (an independent primary school) due to its proximity to

St Mary's church.

Services for these schools for the important church festivals and for the end of term are held in St Mary's church.

In addition to the RC primary school, there is another primary school in Hartley which is non-church affiliated, where our clergy have historically had connections.

Ecumenical Links

The churches of the RNWK Group have long had ecumenical links with other churches of different denominations.

Fawkham & Hartley has recently rekindled our collaboration with the congregation and new priest at St Francis de Sales RC Church in Hartley. Together we hold Prayer Breakfasts on a Saturday morning every other month; services for Christian Unity Week and the World Day of Prayer

and a Good Friday walk of witness.

In September there is a 'Ride and Stride' fundraiser organised by the Friends of Kent Churches, when all the local churches are open as 'pit stops'. Hartley has a small monthly village/parish magazine, 'The Hart', and our local church clergy, both Anglican and RC, are periodically asked to contribute a suitable article for the time of year from the Christian point of view.

Community Use of Our Church Centre

Our Church Centre is utilised by a number of local groups and activities which benefit the community.


As the building is licensed by the Diocese for religious services, our Church Centre bookings co-ordinator is mindful of what is an appropriate activity and deals with the bookings accordingly. The income from the hirers who are not church affiliated, is a significant part of our annual income.

The Parish hosts a Pop In Coffee

Morning on Thursday mornings there, to which all are welcome. It is a good outreach opportunity for our parish priest to meet members of our community who are not churchgoers.

Recently we have started up a Chat and Craft session to which all are welcome on Monday afternoons.

Church events, like our Harvest Supper and parish fundraisers, such as quizzes, are also held in the Church Centre.



Some of the Groups using our Church Centre

- Yoga
- Short Mat Bowls
- Rainbows Society
- HADARA
- Local Vocals
- Flower Club
- Foot Clinic
- Art Group
- SHADARA
- Historical Society
- Pop In Cafe
- Brownies
- Guitar Club
- RAPC

About the Church

Outside in the Community

Once a month on a Thursday, in fine weather, there is an organised parish

walk around the beautiful countryside we have on our doorstep.

Our Summer Fete

Our annual summer fete, held for many years on the field at St Mary's church and ably managed by our fete committee, is as much a community as a church event. The £5,000 - £7,000 raised generates a large part of our fundraising revenue. Local

schools and organisations participate, which in addition to the stalls manned by parishioners and other local volunteers, makes the fete a highlight of the year and brings about awareness of our church by including everyone in the local community.



Our Charitable Involvement

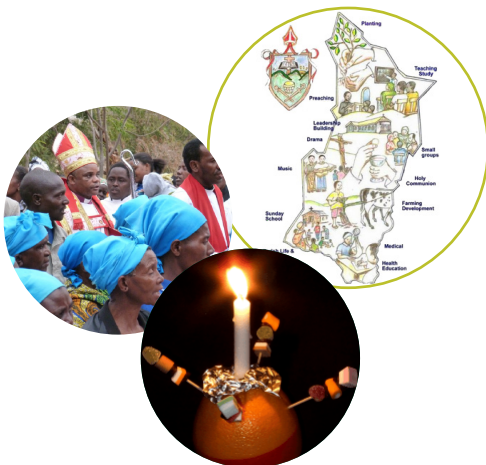
Our small Mission Links team works to develop links with charities supported by the parish and makes recommendations for parish away-giving.

We are linked with Tanzanian village of Lukole through the Rochester Mission Links Companion Dioceses of Mpwapwa. For several years we have supported the secondary education

of girls in the village with donations to fund school uniforms, shoes and books.

We also support the Children's Society through our Christingle Services held in December.

We are hoping to expand our charitable giving once our financial situation has improved post Covid.



About the Finances

Our PCC and Treasurer work hard to maintain a healthy financial position but, as for many parishes in recent years, this has become very difficult.

The number of regular church attendees has fallen and many of our parishioners are elderly and some on low incomes. The target the PCC set for the Parish was to maintain free reserves of some £20,000 to £30,000. (This amount excludes sums held in reserves for urgent building works.) Reserves have fallen in recent times and it has not been possible to meet this target due to decreased income resources, aggravated by the Covid situation.

- In order not to go into deficit in 2021 and 2022, it became necessary to dramatically reduce the Parish Share paid to the Diocese and this year only £12,000 was given, whereas the requested sum was around £50,000. As a result, our free reserves are now improving and are close to the target set. For this reason, the PCC has agreed to double the Parish Share to the Diocese for 2023.
- Our income derives largely from standing orders given by our parishioners, one-off donations, tax reclaims and a small contribution from Longfield Parish to meet joint costs (ca.2 hours/wk Parish Administrator).

The income from fundraising is likely to raise about £10,000 this year, largely from our summer fete.

- Our PCC buildings committee chairman optimises grant opportunities, which have amounted to over £70,000 in recent years. In addition, the Friends of All Saints and Friends of St Mary's associations have over time contributed large sums to finance special items.
- Our other main source of income is from lettings of the Church Centre, which brings in a gross sum of ca. £15,000 each year.
- The details of our finances can be found in the minutes of our last Annual Parochial Church Meeting.
- Looking to the future and the reducing number of our church attendees, unless the ageing demographic changes, these financial challenges will increase. We are able to maintain our Parish's current financial situation only with the support of a potentially reducing band of volunteers.
- The PCC has access to funds held for special purposes but these cannot be spent on routine items.

2021 Statement of Financial Activities (unrestricted)

| | |
|-------------------------|---------|
| Receipts | £73,281 |
| Expenditure | £72,017 |
| Net Result | £1,264 |
| Reserves - Unrestricted | £10,551 |
| Reserves - Restricted | £43,000 |

Income Breakdown 2021 (unrestricted)

| | |
|---------------------|---------|
| Direct Giving | £52,032 |
| Fundraising | £7,429 |
| Investments | £127 |
| Other (mainly hall) | £13,693 |

Regular Giving

| | |
|-----------------------|---------|
| Regular Direct Givers | 65 |
| Annual Value | £31,000 |

About our Buildings

Overview

Within the Parish we have two well maintained 12th Century Grade 1 Listed churches, and the Church Centre, built in the 1960s.

The interiors of our churches are of historical importance and are fully described on our Parish website.

The management of our two beautiful buildings is the responsibility of the PCC's Buildings Committee, which currently consists of 13 members drawn from the church wardens and interested parishioners, many of whom are technically qualified and/or have backgrounds in the care and construction of buildings. This committee meets on a regular basis.

The committee's main responsibilities include: -

- Applying for grants where these are available
 - Managing quinquennial repairs as necessary
 - Managing the Church Centre's bookings and facilities
 - Working with the Friends Associations of both churches
- With the financial support of the Friends Associations, grants and our repair reserves, over the last few years we have provided a number of enhancements to our buildings.
- With respect to our quinquennial inspections, both our churches are shown as being in good order and well looked after.
- The costs of the work of general day to day maintenance are covered by regular payments made from the church funds and also the Diocese reserve fund for each building.
- Upkeep and day to day care of our building
 - Facilitating faculties for any work on the listed buildings

St Mary's Church

St Mary's church, Fawkham is set in a scenic valley. The church is surrounded by a large meadow that borders the churchyard on three sides with an adjoining large car park all within a conservation area.

Facilities include a Norman font, small vestry and toilet but no kitchen area. In addition, there are a couple of small stores. There is a single bell and a good pipe organ. The free-standing pews are heavy but can be moved to face any direction and with additional folded chairs the church can seat 115.

The bell tower, spire and roof were refurbished in 2017/18 and the external walls were repainted by means of a Listed Places of Worship grant in 2019. That year, with the support of the Friends of Fawkham Church, we also installed a new LED lighting system with designer



pendants, which are symbolic of St Mary's church.

The church is much loved by the villagers, many of whom are not regular worshippers but who support the church financially.

All Saints' Church

All Saints', Hartley is pleasantly situated to the south of the village alongside the parish burial ground and Manor Field recreational area, where additional parking is available.



Our ancient church is small but an extension in 2010 added additional seating space which, together with the fixed pews in the main church, allows over 100 to be seated. The extension also provided toilets, kitchen facilities

and a mezzanine floor with a large storage area, access to which is by a newly provided staircase financed by the Friends of All Saints' The bell tower has two bells and there is a small vestry.

About our Buildings

All Saints' Church (cont'd)

It is our policy for both churches to be open every day, for quiet prayers and access to the Books of Remembrance. This is achieved with the help of a

team of volunteers.

A full history of both churches is available on our website: www.fawkhamandhartley.org.uk

Churchyards

At All Saints' church, there is a churchyard next to the church. The burial ground is now full and there is a new burial ground close by, behind the Manor field pavilion. Both are fully managed by Hartley Parish

Council.

The churchyard at St Mary's church, which consists of a burial ground and garden of remembrance, is managed by our church.

Fawkham & Hartley Church Centre

Fawkham & Hartley Church Centre is situated in Hartley midway between the churches of All Saints' and St Mary's. It was built in the 1960s on the original rectory land and has a rear car park.

The Church Centre's main hall can be laid out in various ways depending on the type of event and can seat a maximum of about 150.

There is a self-contained meeting room which can be subdivided into two and the raised stage in the main hall can be screened off to make another meeting area.

The building has modern toilets

and a fully fitted kitchen and is fully centrally heated. It also houses the Parish Office which can be accessed separately via the front entrance.

When Sunday morning services are held at the Church Centre, we use a folding wooden altar with decorated wooden screens behind. The recent installation of a large screen and streaming facilities enables services to be broadcast live on YouTube.

The Church Centre is also open for community hire.



The Rectory

The Rectory, built in the 1960s, is set in mature gardens with direct access to the Church Centre.

It is approximately one mile from both churches.

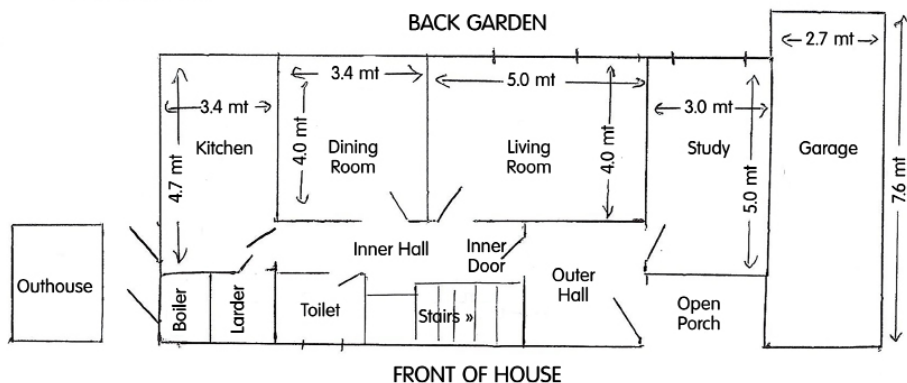
It is ideally situated in the heart of Hartley village, which has a few local shops including a post office and a small supermarket within three small groups of shops. Sadly, there are no longer any shops in Fawkham.

- This substantial detached house offers a driveway with ample off-road parking and a garage.
- There are three reception rooms, one of which is a study which is ideally placed near the main entrance for hosting visitors and giving separation from the family reception rooms.
- A kitchen/breakfast room completes the ground floor.
- To the first floor are four double bedrooms with bathroom and separate WC.
- In line with diocesan advice, the PCC will pay clerical expenses and also Council Tax and water rates.
- There are telephone links to the facilities in the Parish Office.
- The Rectory is in good general condition.

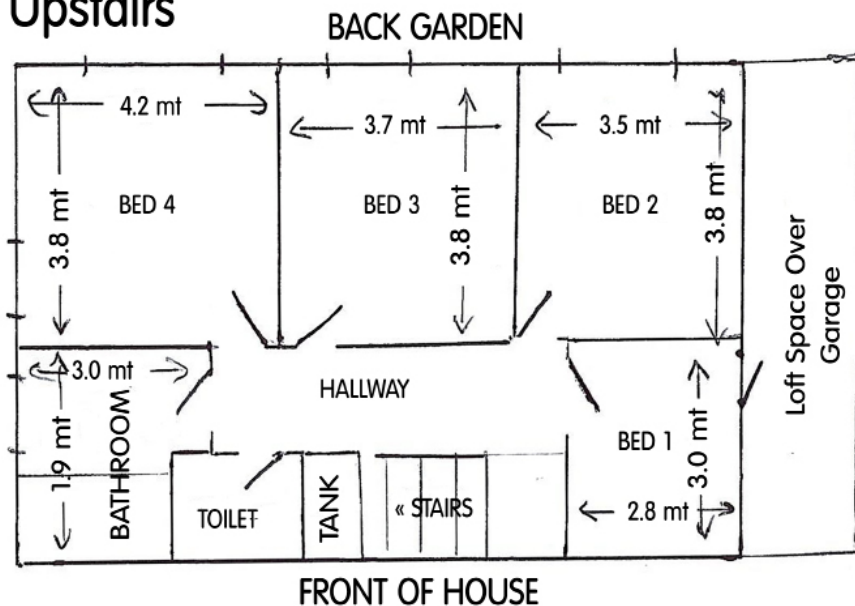


Rectory Floor Plan Not To Scale

Downstairs



Upstairs



Further Information

Parish website: www.fawkhamandhartley.org.uk



The Parish of Fawkham and Hartley



Diocese of
Rochester

