



St Andrew's & Townfield Church, Bebington

TOWNFIELD CHURCH PROFILE





A message from the Bishop of Chester

Thank you for looking at this post in Chester Diocese. Whatever the Lord has for you, I want to assure you of my own prayers and a deep gratitude that we might get to partner together in this part of the Lord's work.

I have spent ages trying to capture the enormity of the privilege I feel in getting to serve the people of this diocese, and my words cannot bear the weight of that calling. This community of communities ranging from the very richest to the very poorest and the deepest rural to the most industrialised and urban is amazing. The diocese holds together in a shared sense of call to be 'Together in Christ Sharing Hope'. We have a deeply held vocation to serve the 1.5 million inhabitants who have no meaningful connection with a community of faith, and share the feast which has been shared with us in Jesus.

In Chester Diocese this is always going to be worked out locally first and foremost: no-one met Jesus through a Diocese! Lives are changed in parishes, chaplaincies, and new expressions of Christian community, when people are invited in kindness and grace into transformative encounter with the love of the God who made them. Together we focus on our broad strategic aims so that those who know they are the people of God can serve all the people God calls in their everyday living.

We are utterly committed to safeguarding, because every person matters to our God and Saviour more than we know how to express. This is also why we welcome applications from every background for posts in this diocese. We are learning how to do all of this as guest rather than always as host, as we partner to serve the world to which we are sent.

If God is calling you to serve with us, I rejoice! Come, roll up your sleeves, and get stuck in! If the call is elsewhere then be assured of our gratitude and earnest prayer that the Lord will lead and provide in all things.

Please do pray for us, too – the harvest is plentiful, but the workers are few.

+Mark



St Andrew's & Townfield, Bebington: Associate Minister for the parish, and Minister for Townfield church

Contents:	Page No
1. Welcome and Introduction	4
2. Who We Are Looking For (Person Specification and Job Description)	5-9
Desired Skills and Qualities of our next Minister	
The Role	
Townfield Role	
Parish Role	
Strengths and Opportunities	
4. Our Vision	10
5. Clergy & Ministry Team	11-12
6. The Churches & Ministry	13-20
Townfield and St Andrew's	
Sundays at Townfield	
Townfield Weekday Events	
Children's Ministry	
Youth Ministry	
Townfield and St Andrew's Joint Activities	
8. The Church School and Other Schools	21-22
Flourish	
9. Finance	23-26
Mission Partners	
11. Buildings and Housing	27
Buildings	
Housing	
12. Safeguarding	28
13. Living in Love and Faith	28
14. The Parish and Local Area	29
16. The Deanery and Diocese	30
17. Relationships With Other Churches	30



Welcome and Introduction

Thank you for exploring the possibility of coming to share ministry with us.

This Associate Minister post, open to men and women, is an Incumbent-status post, similar to that of many Team Vicar roles. It carries a large degree of autonomy, but with the support of a wider team. The role combines responsibility for the day-to-day running and leadership of Townfield Church, with shared ministry across the parish under the leadership of the Rector.

We are a two-church evangelical parish. St Andrew's is an ancient church, dating back over 900 years, with a long evangelical history. Several surrounding parish churches were originally planted from St Andrew's. Townfield is the most recent church plant, having started in 1992 in the church school, where a Sunday school was already established. It is now an established church in its own right, serving the school community and nearby area whilst remaining a part of the parish, and operating in close partnership with St Andrew's Church.

Townfield is a well established congregation which has seen many changes during that time, especially following the pandemic. We are adaptable and welcoming of initiatives, and eager to see where our next minister will lead us.

The post is fixed for the maximum legally permissible 5-year term, which will be renewable. Funding for this post is secure.

You are very welcome to contact the Rector, Revd David Vestergaard, for an informal conversation on david@standrewsbebington.org.uk or 0151 458 2794.

**St Andrew's
Primary School**





Who we are looking for:

Desired skills and qualities of our next Minister

- A love for Jesus and for people
- A gifted and flexible Bible teacher and preacher, to a wide variety of people; someone with good communication skills and Bible knowledge
- Commitment to prayer - both personally and corporately
- An infectious enthusiasm for faith and ministry
- Passion for reaching the lost and nurturing Christian faith
- Openness to the person and work of the Holy Spirit
- The ability to model grace and truth in their own life, in ministry and in leadership
- Adaptability - the ability to minister comfortably in the informal atmosphere at Townfield, as well as the range of settings at St Andrew's: including 8am BCP, funerals and weddings
- The ability to inspire, encourage, relate to and care for people of all ages, from different backgrounds and stages of faith, and cater for individual needs.
- The ability to relate to, and work with, the whole school community – Governors, Headteacher, staff, parents and children
- The desire and ability to nurture faith and encourage discipleship in daily life, not just on a Sunday
- The desire and ability to identify gifts, to enthuse and engage others and to involve them in church life and ministry
- A team player with a collaborative approach to decision making
- Willingness to gain a good understanding of our two churches and different congregations, the crossover, their differences and how we operate
- Willingness to explore new ideas, and can welcome imaginativeness and creativity in others
- Approachability and the ability to be welcoming and encouraging
- A good understanding of, and commitment to, safeguarding; and the ability to foster an effective safeguarding culture in the Church
- Good administrative and time management skills
- IT competency
- Good sense of humour and sociable nature
- Willingness to work within, and respect, the PCC's decision on 'Living in Love & Faith' (see p27 below).

The congregation of Townfield Church were asked what characteristics they would like to see in our next minister.

We came up with this...





The Role

The Associate Minister role has two main elements: responsibility for Townfield Church, and shared ministry across the parish. In the past, there has been a nominal split estimated at around 70/30. However, this is difficult to determine with any accuracy because many areas of ministry are shared. (For example, weddings and funerals, ministry at St Andrew's School and other schools, and several church groups and activities). Outlines for the two elements of the role are outlined below.

Townfield Role

To be responsible for the overall leadership of Townfield Church, recognising the authority of the Rector and PCC of the parish

To play a full part on, and as agreed chair, the Townfield PCC subcommittee

To lead the Townfield team of leaders and speakers; planning and organising the services, in co-operation with team members

To oversee, manage and develop pastoral care

To develop outreach and engage with the community, especially in the Townfield area of the parish

To develop nurture and discipleship of people at all stages of faith

To be committed to continuing to raise Townfield's financial giving and contribution to the parish, as well as sharing relevant financial information

To liaise with St Andrew's School, be involved with, and build relationships amongst, the school community

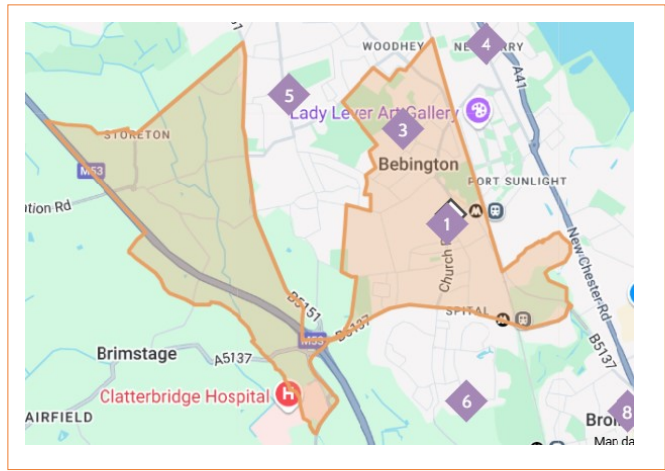
To organise the themes and rota for assemblies at St Andrew's School, in liaison with the school, share in planning and supporting school services in church and share in supporting RE at the school.

To be a Local Foundation Governor at St Andrew's School (subject to approval of the PCC and Academy Trust)

To take opportunities to get involved in the community of St Andrew's School

To be the Lead Person for the Flourish project (see page 21 below), including line managing the employed Flourish Lead

To monitor the use of the school building, ensuring that terms and conditions are complied with and that the school's premises are respected.



Parish Role

To work with the Rector as a senior colleague

To be a part of the Parish Staff Team

To own, and be committed to supporting, the partnership between St Andrew's and Townfield, and to communication between the two churches

To work through, and in co-operation with, our leadership structures - with the Rector, our staff, the PCC, subcommittees and other leaders

To share responsibility for, and conduct of, 8am communion services, evening services and occasional festival services

To share conduct of occasional offices (mainly weddings and funerals) and preparation for these (in 2024, the parish had 20 funerals, 7 burials of ashes and 4 weddings)

To organise and run, or share in running, courses (such as Alpha, discipleship courses etc.) and joint events across the parish

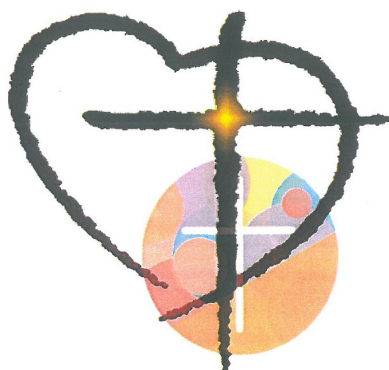
To share in ministry to nursing/care homes and other pastoral ministry

To be involved in school assemblies and services etc. at/for schools in the parish (in addition to St Andrew's school), in co-operation with the clergy and staff team)

To assist the Rector in managing members of the staff team, as agreed

To be a member of the PCC

To participate as agreed and appropriate in the Deanery, Churches Together, Wirral Gospel Partnership and other church groups, sharing this with the Rector.



Strengths and Opportunities of Townfield Church

Strengths

A committed congregation, with a wide age range, who are active in serving

A welcoming and friendly atmosphere

A supportive and able team, in both churches

Very strong links with the school community, and an enthusiastic new Headteacher who is keen to develop these links further

A large and gifted staff and lay team, excited to work with you.

Opportunities

Discerning direction and leadership of the church's vision groups

Developing outreach to the School and wider community, especially to children and families

Increasing our visibility to the local community

Building discipleship and prayer in the congregation

Continuing to develop the relationship and partnership between our two churches.



Our Vision

Our shared vision across the parish, agreed in 2014, is

A Christ-centred Family Sharing God's Love.

Christ-centred

Followers of Jesus Christ grounded in scripture, prayer and worship

Family

A welcoming fellowship where all ages are nurtured and enabled to use their God given gifts

Sharing God's love

Making God's love known in our daily lives with everyone we meet -
Serving and loving each other, our community and beyond.

To enable Townfield to fulfil this vision, three groups were established. These currently function to varying degrees, some having been incorporated into ongoing events. We would welcome help in re-energising and focusing these groups.

To be Christ-centred, we have house groups for Bible study, a weekly Zoom Prayer group and monthly Women's prayer breakfast.

To be Family, we have regular events to build fellowship and relationships - including occasional shared lunches after the service, picnics, quizzes and board games afternoons, and a very popular annual barn dance - to name but a few.

To share God's love we support Besom (a Christian initiative amongst local churches Which aims to support local people in need who have been referred), Christians Against Poverty, Wirral Food Bank and Forum Housing.



forum

Wirral
Foodbank
Together with Trussell

christians
against
poverty

CAP

Clergy and Ministry Team

If you come to join us at Townfield Church you will have the benefit of shared experience and support from a wider team. In addition, we have several other people at each church who lead services or preach occasionally, and a multitude of people who serve in many different areas of ministry.



Rector—Revd David Vestergaard

Leads St Andrew's Church and has oversight of the parish, visiting Townfield for services about once a term.



Curate—Revd Andy Field-Davies

Currently in his second year of curacy, Andy is serving across the parish and leading some areas of ministry at Townfield during the vacancy.



Associate Minister (self supporting) - Revd Debbi Stott

Debbi is based at St Andrew's but serves across the parish leading or preaching occasionally at Townfield.



Retired Minister—Revd Chris McCarthy

Chris is based at St Andrew's but leads or preaches occasionally at Townfield as needed.



Youth Ministry Co-Ordinator (full-time) - Christopher Jarvis

Christopher has been with the parish for 8 years and leads youth ministry across the parish.



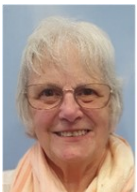
Leader of Children and Family Ministry (part time) - Jen Shelton

Jen has been in post since January 2024 and leads ministry with children and families across the parish.



Reader—Helen Thomas

Helen is currently based at Townfield but serves across the parish.



Reader Emeritus—Judith Battersby

Judith leads and preaches at Townfield and is also currently one of the Townfield wardens.



Reader—Ian Halliday

Ian is based and serves at St Andrew's.



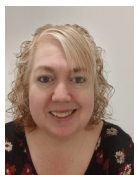
Reader Emeritus—David Jack

David is based and serves at St Andrew's.



Reader in Training—Tim Shelton

Tim is based at St Andrew's but serves across the parish alongside Jen.



Parish Administrator—Jenny Jackson

Jenny works part time in the office based at St Andrew's Church Hall and provides organisational and administrative support across the parish.



Administrative Officer—Ash Vestergaard

Ash also works part time in the office providing organisational and administrative support across the parish.



Flourish Lead—Amy Walker

Amy works two days a week as Flourish Lead at St Andrew's School. (see page 21)



The Churches and Ministry

Townfield and St Andrew's

Townfield Church was started in 1992 by St Andrew's Church, Bebington, with a remit to witness to a specific area of the parish from a base in St Andrew's Church Primary School in Townfield Lane.

At present Townfield number 70 on the electoral roll (the number for the whole parish is 296) with another 2 to be added on their 16th birthdays and others not yet on the roll who are part of our worshipping community, which consists of:

14 under 10 years

16 aged 11 - 17

11 aged 18 – 39

51 aged 40 – 69

25 aged over 70 years

Townfield's venue gives it a more informal and flexible atmosphere than St Andrew's church setting, although the service styles in both churches are similar. The ability to wing it through children participating unexpectedly and recalcitrant behaviour by electronic equipment is useful! Townfield has always aimed to be a friendly, safe, warm and welcoming space for all, no matter someone's age or background. Our aim is to be family in Christ.

Townfield has a nominal responsibility for a designated area of the parish, which is seen as its primary mission field. This can be helpful for some purposes, although in practice both churches draw membership from across the parish and often beyond.

We hold Sunday services, Messy Church and other occasional events in the school building. We are limited in terms of the availability of the school building to outside school hours, but can and do partner with St Andrew's for other events. There is a close partnership and interdependence which strengthens both churches, with many areas of ministry shared and/or supported by members of both churches. These include a joint monthly café-style service, our youth work, Little Fishes carer and baby/toddler group, Lego Church, Church Lads and Girls Brigade, Brownies and Guides and our Friendly Faces community group. These all meet at the Church Hall. We work together with St Andrew's for our Alpha groups but have separate Home Groups. We have in the past helped to celebrate weddings at Townfield and have held baptisms during the Sunday service as they arise.



Church Hall



We have been working on strengthening things we do jointly by improving communication in, and between, both churches and developing joint activities - without hampering the churches' individual development and character. The churches also run their own activities separately, particularly social and evangelistic activities.

Townfield has not been legally defined as a district church, so does not have a District Church Council with legal responsibility. The PCC operates with a subcommittee for each church, and meetings include joint time, but also time for each church separately. Decisions on strategy and expenditure are brought before the PCC, but to date this has not presented any problems as the PCC recognises Townfield's needs and has been willing to approve requests.

There are two churchwarden posts for the parish, which can be filled from either church (in practice they are usually members of St Andrew's). PCC has approved provision for two Townfield wardens who, whilst not officially officers of the Bishop, are appointed by the PCC and effectively carry out the role of churchwardens for Townfield. Townfield has 5 (one third) of the elected members on the PCC, and Synod representatives and co-opted members can come from either church.

The Associate Minister/Minister for Townfield has responsibility for leadership of, and services at, Townfield. The Rector and Minister have occasional Sunday morning clergy swaps/visits once a term or so. The Associate Minister also shares in Clergy ministry across the parish, especially for Sunday 8am and evening services including our monthly 'Connect' café style service, festivals, funerals and weddings, pastoral ministry and in times of need.

Robes are not worn for services at Townfield nor for the most part at St Andrews. Cassock, surplice and scarf are usually worn for 8am services and most funerals and weddings.

We have started working towards Eco awards under the A Rocha scheme at both churches, and need help with leading this at Townfield going forward.



St Andrew's
Townfield

Sundays at Townfield

Sundays at Townfield start at 10:30. We have teams of people who organise all the setting up of chairs, equipment etc., and who also pack away after the service.

The first Sunday of each month is an All Age service. On other Sundays we have groups for children and young people, with the latter run jointly with St Andrew's. We hold communion monthly. We almost always have a separate service leader and preacher so that preparation and delivery of the service is shared.

We have a policy of admitting baptised children, those in Key Stage 2 (year 3) and above, to communion, after preparation. We have been keen to avoid any suggestion of superiority in this; some families choose to take this route whilst others do not.

There is a team of people available for those needing prayer after the service. Once a month there is a half hour general prayer time, which is open to all, before the service opens.

After the service teas and coffees are served to encourage everyone to mingle. Occasionally we stay later and share a meal, before packing away so that the School is ready for the next day.

During 2024, the usual Sunday attendance was 50 adults and 13 children plus an estimated 14 worshippers at home. Services are livestreamed on Facebook and YouTube (you can find a link to most of our services on our website, www.townfieldchurch.org.uk, and there are a couple of examples below:)

<https://www.youtube.com/watch?v=zZkJYXdHQgo>

<https://www.youtube.com/watch?v=IWC3et3orSM>





Townfield Weekday Events

As with many other churches people are encouraged to become part of a 'Home Group'. These meet in peoples' homes either weekly or bi-weekly to study scripture, share and pray. There are 4 groups currently meeting.

There is a weekly 'Zoom' prayer time on a Tuesday evening. We also have a 'Prayer Walk' on a regular basis. This involves leafletting a street within our patch and then a week later praying for that area as we walk it.

On the last Saturday of the month there is a Women's Prayer breakfast in a nearby café which opens early, specifically for us, and provides a secluded area for privacy.





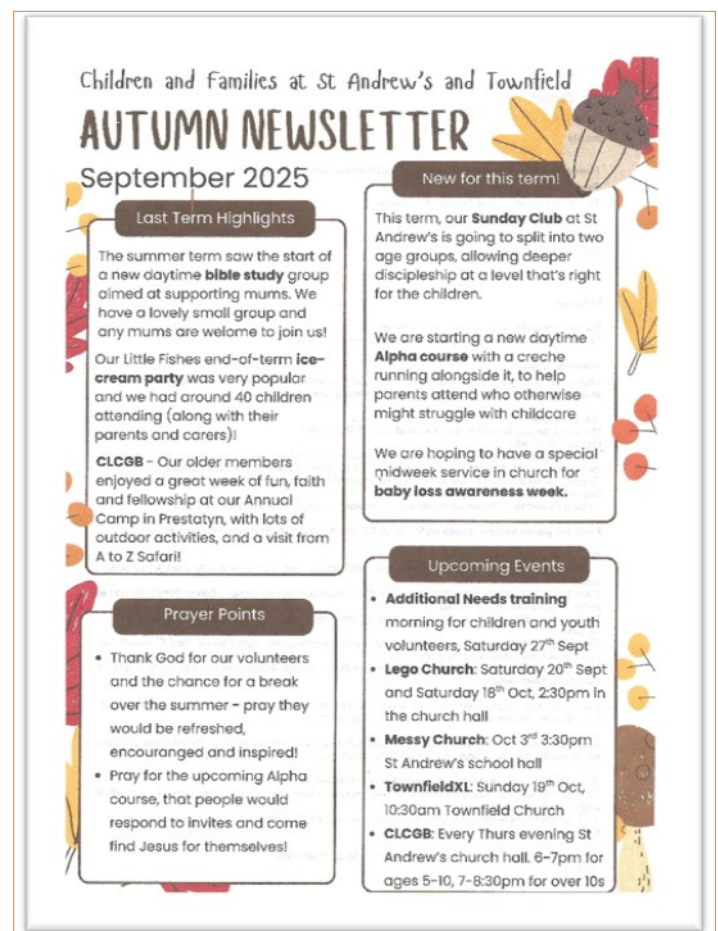
Children's Ministry

Sunday Club

Following the pandemic our numbers of children have fallen. This has been partly due to the impact of the pandemic; partly to a lower birth rate; and partly because as a result of that, the school has not been oversubscribed, so families have not needed to attend church in order to gain a place. Consequently, we have combined our Sunday children's groups into one group for all children of pre and primary school age. This meets during the service each week apart from All Age Service weeks. Numbers vary considerably, up to around 6.

Messy Church

Messy Church is currently held each half term in the school hall on a Friday afternoon. This is seen as being a Townfield event and each event attracts over 30 children and their family members. Most attendees are children from the school and their families. Games and crafts are enjoyed by all. There is then a brief talk and worship segment before sharing a meal together.



Joint Children's ministry with St Andrew's

Little Fishes is the baby and toddler group, which is held at St Andrew's Church Hall during term time. Volunteers from both congregations help run the groups. Approximately 30 children attend weekly across two sessions. Attendees are generally local children with their parent, grand-parent, caregiver or child-minder.

Lego church is organised and run by the Parish Children and Families Leader with a team of helpers. It is held monthly on Saturday afternoons. This group is primarily aimed at children aged 4-11 and their parents/carers, using Lego and craft to explore a Bible story.

Uniformed Organisations: Rainbow, Brownie, Guide and Ranger Groups meet weekly at St Andrew's Church Hall. The Church Lads and Church Girls Brigade also meets weekly and is closely linked to our Churches.





Christopher and Charlie Jarvis



Youth Ministry

Our youth work is led by our Youth Ministry Co-ordinator Christopher Jarvis, and a team of volunteers from both churches. The youth ministry is comprised of multiple groups across the week, each run jointly for both churches, and where we seek to "create a growing community where young people can develop their relationship with God and discover who they are now and for the future."

Our main group runs on a Friday evening and is primarily an activity-based youth club called Amplify Fridays. Each week through the year we run a different activity for 20-30 young people between the ages of 11-18 - we have baked together, built towers out of spaghetti, gone ice skating, ran a mock trial, held an open mic night, and many other things beside.

Most Sunday mornings we meet with the young people to discuss various topics from a Christian perspective. This group alternates venue between the Church Hall and Townfield, with one half leaving the service part way through to walk over to meet the other half.

While both the above groups involve everyone all together, we also run discipleship groups called Unplugged which have smaller cohorts. These groups are designed to delve deeper into Bible study, vulnerable discussion, and mutual prayer. In the term before the summer one group took a deep dive into the Sermon on the Mount while another worked through the Practicing the Way material produced by John Mark Comer.

Alongside these regular groups we also have some one-off events. At the start of the year we ran the brand-new Youth Alpha course for a small group, and each year around the Easter holidays we take the young people away for the weekend to an outward bound style activity centre. Add into this various school assemblies, Christian union groups, Christmas and Easter events, special services, mentoring, and more - we can offer the young people of both churches a lot of opportunities!





Townfield & St Andrew's Joint Activities.



While both congregations have their own distinct styles in expressing the love of Christ in worship and fellowship, the desire to reach those who do not know Him is the same. To this end both congregations often work together in outreach events. Christmas and Easter give traditional opportunities to reach into the parish. Carol Services are provided for local schools at St Andrew's, we hold a Christmas tree festival and drama and a joint carol service for the two churches. At Easter a joint open air dramatic event is held on Good Friday using the talents within each fellowship.

Both churches join in to reach into the community with youth, children's work and adult outreach. Beginning in 2024 Townfield host a hybrid event, Townfield XL, a couple of times a year. Each event aims to bring together Messy Church, Lego Church, Little Fishes and the Townfield congregation on a Sunday morning in an exciting low-key format. Each group contributes to the service by sharing activities they have engaged in during the weeks preceding it. It aims to provide a stepping stone between the various groups and Sunday services.

The congregations of Townfield and St Andrew's have separate Sunday School groups until they reach secondary school age. At this stage they become Amplify and meet together, alternating between both Churches.

For those new to the faith or wishing to explore it further there is a regular Alpha Course which mixes people from both Townfield and St Andrew's.

A new monthly joint Sunday evening café-style service titled 'Connect' has been underway since January 2025. It is proving very popular, including amongst some of our young people. This is run by members of both congregations.

Women's Fellowship is a twice-monthly daytime meeting for mainly older ladies. Our Men's Fellowship, meeting monthly, provides a similar forum for men.

Friendly faces is run by our Poverty Action Group, comprising members of both churches. Meeting every Thursday morning from 9:30, it aims to provide a safe place for those who feel isolated and lonely. Mainly catering for the older members of the community, it has a wide range of activities. Free refreshments are served all morning including toast, and lunch is also provided. Occasional days out are organised too.

St Andrew's and Townfield are working towards a joint weekend or day away next year to strengthen the ties between both congregations. Once again this will be organised by members of both groups.





St Andrew's CE Primary School

The Church School and Other Schools

St Andrew's School is a single form entry Church of England primary school, which has just converted to Academy status as part of the Chester Diocesan Learning Trust. It has a good reputation in the community, is a great school with a strong Christian ethos, and has very strong links with both our churches.

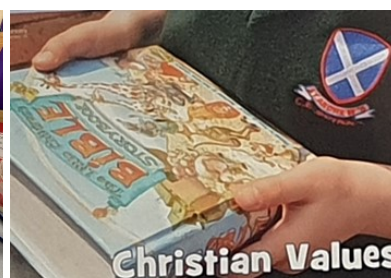
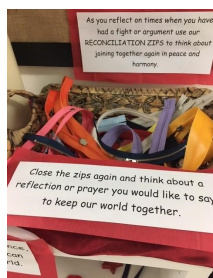
Townfield as a church and the School itself have had a long and fruitful relationship over the years. In the past we have invited the children and their families to join us for mini Olympic and Commonwealth style games in the appropriate years, have performed a couple of pantomimes, and provided alternatives to 'Trick or Treat' at Halloween. Currently, we host Messy Church, and along with St Andrew's Church, are participating in the pilot Flourish Project.

With the recent appointment of a new Headteacher, both the school and Townfield are looking forward to an exciting and closer future. Along with the Flourish Project we are exploring several joint ventures. These include: participating in the school's vision of having God in the centre of the school community; assisting in workshops for the parents; hosting a meeting place in school for the parents to have a cup of tea or coffee and meet each other and members of Townfield; and a school prayer meeting involving the children with their parents/carers, staff and Townfield members. We are also looking at ways in which Townfield can help with fund raising and other events.

The needs of children in the Parish are met by 4 primary schools: St Andrew's, Stanton Road, Brackenwood Infants, and St John's Infant and Junior School. There are 3 secondary schools in the parish: Wirral Grammar Schools for Boys and Girls and St John Plessington Catholic Secondary School. We have good links with a number of these schools. Locally, just outside the parish are Brackenwood Junior school and Co-op Academy (previously known as Bebington High School).

St Andrew's School Vision

With God at the heart of our school community, we aim to encourage each other, through showing the Fruit of the Spirit, to learn and grow in our knowledge of God and the world. This will enable us to walk in His light and live a life which pleases the Lord.





Flourish

The parish of St Andrew's and Townfield has been part of a two-year Church of England funded pilot project called Flourish.

Flourish is a joint venture between the churches and the School that aims to develop a new worshipping community within the school. It has five core values at its heart:

- Placing young voices at the centre of leadership, decision-making and implementation,
- Growing a younger and more diverse community of Christian disciples,
- Building on and developing partnership between the school and the church,
- Creating intergenerational faith development experiences involving children and their families (of all ages), and
- Developing worship that is fully integrated into the regular rhythms, practices, structures and resources of the School's vision for the flourishing of children and adults.

After starting the project in January (following the employment of a Flourish lead person), it has begun to gather and grow young leaders quickly and successfully. The group gathers weekly (in the School) for discipleship and event planning, led by the Flourish Lead.

This has resulted in a number of Flourish worship gatherings and praise parties led by the young leaders, attracting a number of children and families from the school community.

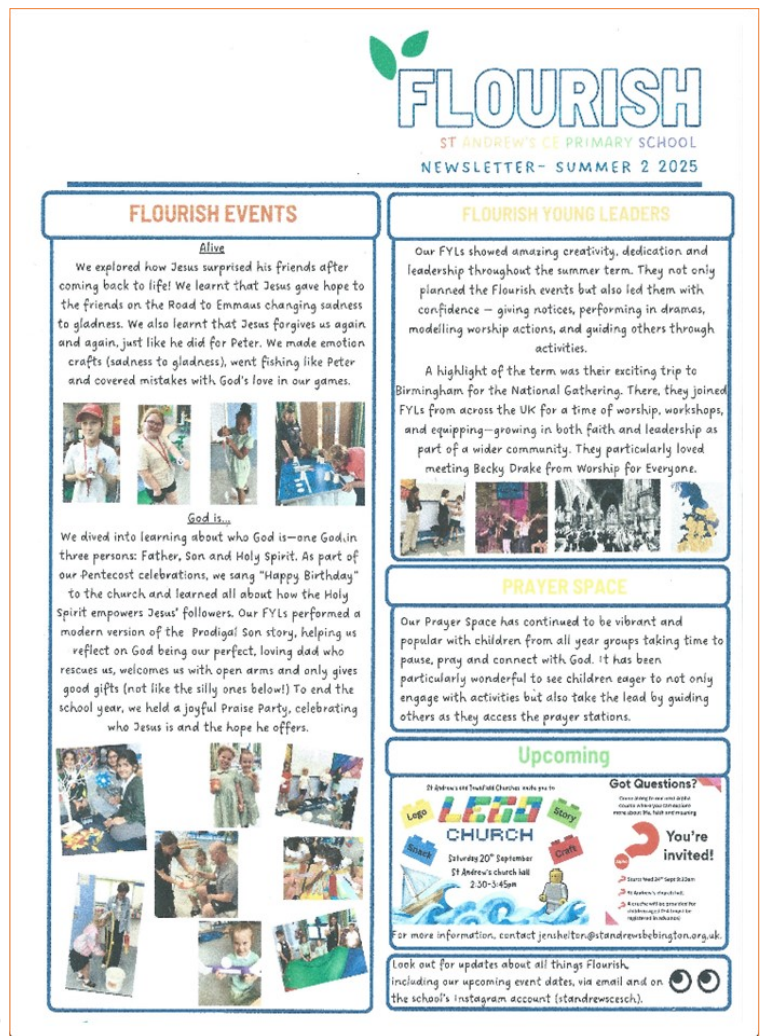
Alongside the discipleship and worship gatherings, Flourish also offers weekly prayer spaces during lunch time for the school community to attend. Again, this is planned and run by the Flourish Young Leaders (FYL), and looks to explore weekly/fortnightly prayer opportunities for parents and teachers.

With the joint nature of the project, both St Andrew's and Townfield Churches have been involved from the start - providing volunteers for the Flourish events, discipleship and planning sessions and prayer stations, and by uplifting it with prayer. The school has embraced all that Flourish has offered and has been a good support for all involved.

Flourish has also become a part of Townfield XL, an occasional event which aims to bring all our outside church activities (i.e. Lego Church, Messy Church, Little Fishes etc) together in a relaxed, relevant environment, and aiming to provide a link to our regular congregation and Sunday worship.

The aim of Flourish is to be a worshipping community in its own right – one that looks to grow and develop young disciples for Jesus and reach those in the school community that regular church services and congregations cannot.

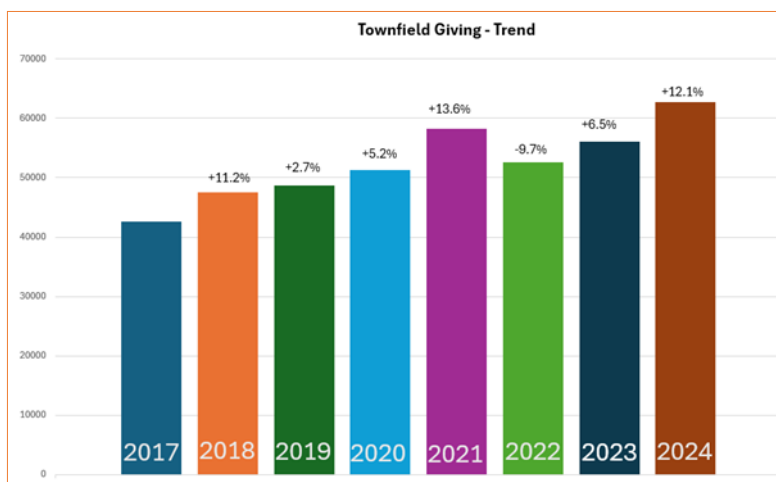
However, it has become clear that the need to be closely linked with the local churches (especially St Andrew's and Townfield) is essential, recognising that discipleship is most effective in communion with the wider body of Christ.



Finance

Townfield is currently partly financially dependent on St Andrew's, although over recent years progress has been made in growing Townfield's financial contribution to the running of the parish. It is working towards carrying an appropriate share of the costs of ministry. Finances are managed jointly, but Townfield has its own budget.

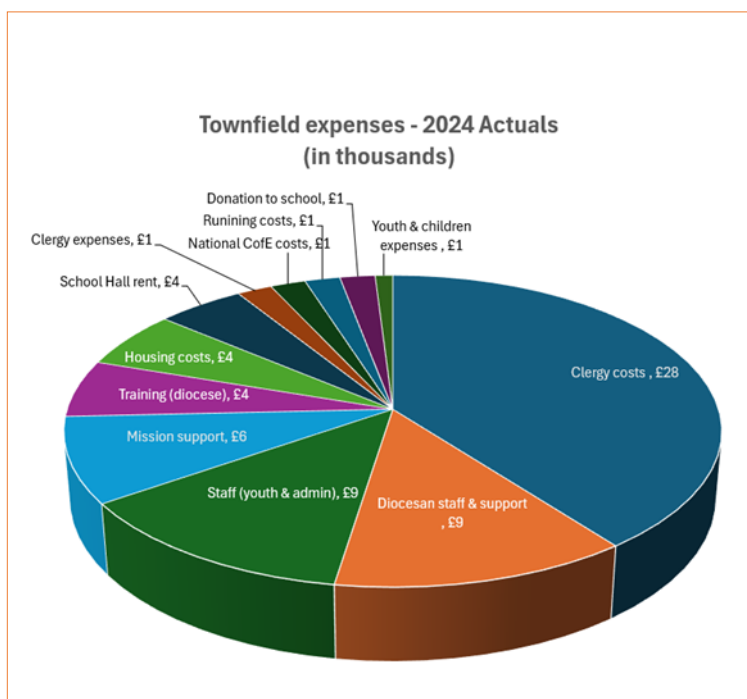
Townfield is a generous church given its size with giving being an important part of our discipleship. Most giving is made electronically through bank transfers and standing orders. If we look back over the last few years, we can see that the giving of Townfield members has grown almost every year since 2017, as shown below.



Our aim for 2025 is to continue to increase our giving - not because we're planning lots of expensive new things (we're not!), but because we're still working to catch up with increased costs due to inflation in the last few years. We don't have a historic church building that needs maintaining, and the majority of our expenses are for staff costs, though we do also pay for use of the school building.

The Parish Share for St Andrew's and Townfield Churches, with a share for 2 incumbent status clergy is paid in full every year. 10% of giving is allocated to mission.

The next two pages show our annual budget for 2024, budgeted and actual, for Townfield and for the whole parish including Townfield.



Townfield Budget

INCOME	Budget 2024 Townfield Budget	Dec-24 Budget	Dec-24 Actual
1 Giving (inc Tax Recoverable)	64758	64758	62751
2 Legacies		0	
3 Donations - Church		0	1460
Total Income	64758	64758	64211
EXPENDITURE			
Clergy Costs			
4 Parish Share	43058	43058	42946
5 Housing - Rep/Maint/Ins/C'Tax	4000	4000	3992
6 Curate Support	1000		
7 Clergy Expenses	1800	1800	1516
Total	49858	48858	48454
Employee Costs			
8 Youth Worker	6200	6200	6200
9 Staff Training	300	300	200
10 Secretarial Costs	2700	2700	2700
Total	9200	9200	9100
Church Buildings			
11 Utilities - Church/Hall/Office	0	0	0
12 Insurance - Church/Hall			
13 Repair/Maint/Clean-Church/Hall			
Total	0	0	0
Church Running Costs			
14 Townfield School Rent	3800	3800	3741
15 General Expenses	500	500	182
16 Hospitality			44
17 Copyright Licences	600	600	576
18 Printing & Stationery	300	300	469
19 Evangelism (inc Baptism)			95
21 Sunday Club & Youth Resource	660	660	518
21 Gifts & Presentations	200	200	50
22 Church School	1300	1300	1300
23 Professional Fees			
Total	7360	7360	6975
Charitable Giving			
24 Giving Outside the Parish	6475	6475	6275
Total	6475	6475	6275
25 TOTAL EXPENDITURE	72893	71893	70804
26 Surplus/Deficit	-8135	-7135	-6593

Parish Budget (including Townfield)

INCOME	2024 Budget	December Budget	December Actual
1 Giving (inc Tax Recoverable)	304,500	304500	283904
2 Interest and Land Rent	30	30	38
3 Donations - Church	7000	7000	18278
4 Fees Weddings/Funeral	5000	5000	4190
5 Rental Income Rolleston Dr	8000	8000	7343
6 Childrens & Family worker Support	16000	16000	15710
Total Income (exc Roof)	340530	340530	329463
EXPENDITURE			
Clergy Costs			
7 Parish Share	143153	143153	143154
8 Housing - Rep/Maint/Ins/C'Tax	8000	8000	9897
9 Curate Support	5600	5600	5576
10 Clergy Expenses	5500	5500	3071
Total	162253	162253	161698
Employee Costs			
11 Staff Costs	72000	72000	73534
12 Staff Training	1000	1000	414
Total	73000	73000	73948
Church Buildings			
13 Utilities - Church/Hall/Office	19000	19000	14655
14 Insurance - Church/Hall	9500	9500	9045
15 Church & Hall Cleaning	6600	6600	6594
16 Repair,Maint,Clean Church/Hall	13500	13500	18421
Total	48600	48600	48715
Church Running Costs			
17 Townfield School Rent	3800	3800	3741
18 General Expenses	4500	4500	6273
19 Hospitality	1200	1200	760
20 Copyright Licences	1800	1800	1664
21 Printing & Stationery	3800	3800	4697
22 Evangelism (inc Baptism)	1500	1500	1572
23 Sunday Club & Youth Resource	3000	3000	2355
24 Childrens & Family Worker Exp	1500	1500	906
25 Gifts & Presentations	300	300	117
26 Church School	5900	5900	5900
27 Professional Fees	900	900	974
Total	28200	28200	28959
Charitable Giving			
28 Giving Outside the Parish	30000	30000	28365
Total	30000	30000	28365
29 TOTAL EXPENDITURE	342053	342053	341685
30 Surplus/Deficit			-12222

Our Mission Partners

While Townfield sees the local parish and surrounding areas as its primary mission field and having a specific 'patch' to minister to, we also to give 10% of our church income to overseas mission support and other Christian causes.

Our current mission partners include:

- Crosslinks partners Graeme and Bequi Innes, serving in Moldova
- WEC Africa partners Stephen and Catherine McGoldrick (previously in Burundi but currently working from the UK)
- A Compassion child in Tanzania.

After we have set aside monies for these three, Townfield PCC members decide on where we should give any money which is left.



Buildings & Housing

Buildings

Meeting in the Church School for services and other occasional events provides us with a usable, flexible space, including the use of ancillary spaces for groups for children and young people. It also provides both the blessings and limitations of not having our own building to maintain and manage. There is an excellent relationship with the school (as discussed above).

St Andrew's church, half a mile from Townfield, is a large, historic building able to cater for large services. The nearby Church Hall, refurbished in 2023, provides modern, flexible facilities which are used for many of our joint activities (eg youth groups, Lego church, Little Fishes, Friendly Faces, etc.) and is also used by local uniformed organisations.

Housing

We are currently in the process of replacing the current Associate Minister house with one better suited to present day needs. Due to Townfield's lack of meeting space, the minister's house has regularly hosted church meetings. It is intended that the new house will better cater for this, while allowing for improved separation of public and private space. We are close to completing the purchase of a suitable house, with funding in place and plans to convert the garage to provide a meeting space. Details of the house can be viewed here (if you have problems accessing this, please contact David Vestergaard, details at top of profile):

https://www.rightmove.co.uk/properties/163389536#/?channel=RES_BUY



Safeguarding

Townfield takes protecting the wellbeing and safety of those we minister to very seriously. St Andrew's and Townfield churches follow the Church of England Safeguarding Policies and Practice Guidance, including safer recruitment processes when recruiting staff and volunteers - we actively integrate safeguarding into our community's culture. At Townfield and St Andrew's, safeguarding is seen as everyone's responsibility - from the person ensuring that only certain people appear on the livestream to the many volunteers who work with our children and young people. Each church has a designated Parish Safeguarding Officer (PSO) and a DBS Officer. We have good connections with the Diocesan Safeguarding Team, who provide support and guidance via telephone or email. There are many adults in the congregation who are DBS-checked and have completed C of E safeguarding training. The PSO and several others have also completed specific PSO and/or Leadership training.

Living in Love & Faith

Across both our churches, there are members who identify as LGBTQIA+ and are welcomed as part of the congregation. The successful candidate will need to be aware that the PCC has recently unanimously passed the following motion regarding the Prayers of Love & Faith, and be willing to support, and work within, this framework:

'This PCC believes that every person is made in the image of God and loved equally by God. We are committed to enabling a welcome for anyone and everyone who seeks to engage in the life of the worshipping community at St Andrew's and Townfield churches.

This PCC commits our churches to being places full of both 'grace and truth' (John 1:14). In practice, this commits us to being generous in our welcome, gracious in our conversations, respectful in our relationships, and always wanting the best for others. At the same time, it commits us all to a radical commitment to Christlikeness, including in the area of relationships and sexual intimacy.

In expressing our commitment to grace, this PCC welcomes people to our churches regardless of sexual orientation, lifestyle or personal relationships.

In expressing our commitment to truth, this PCC, whilst recognising the range of views within the PCC and congregations, supports the parish clergy in their decision not to use the Prayers of Love & Faith, nor to permit their use by others in the church buildings.'



The Parish and Local Area

Bebington lies within the Wirral, which is a 15 miles long by 7 miles wide peninsula, bounded by the rivers Dee and Mersey and the Irish Sea. Wirral has a wide mixture of urban, suburban and rural areas. It is a beautiful area which has much to offer including woodlands, sandy beaches and many facilities. There are many opportunities for walking, running, cycling, sailing, fishing, golf, football, rugby, cricket etc. Many people who come here don't want to leave.

Christianity in the area is traceable back to the Anglo-Saxon era and Bebington parish church has parts dating back to the original Norman construction of the 11th century.

The Bebington of today is a suburban residential conurbation of 9,650, the vast majority being ethnically White British, although recent shifts in immigration have slightly altered this in recent years. Approx 60% of the population according to the 2021 census are of working age. The parish of Bebington mainly comprises privately owned or rented semi-detached housing but with a mixture of larger and smaller houses and pockets of deprivation. It falls in the middle of the range under Church Urban Fund (CUF) deprivation statistics which can be found here: <https://cuf.org.uk/parish/590153> The adjacent parish of New Ferry and the area which then leads into central Birkenhead are much more deprived areas than the west and centre of the Wirral.

The parish has within its bounds 2 residential nursing homes, which we support with regular services, and a hospice.

There is a modern leisure centre and swimming pool as well as a local library, a civic centre, GP practice and a park. There are several parades of shops and cafes and a large retail and leisure park 2 miles away in Bromborough.

Nearby is Clatterbridge Hospital and Oncology Centre and the main hospital for the Wirral, Arrowe Park, is 15 minutes' drive away. The M53 gives access to the country's larger motorway network. The local trains and buses give a frequent and regular service to both Chester and Liverpool City centres, which also connect to services to the wider country. There are also local beaches and countryside to enjoy within Wirral itself, and North Wales is a short car ride away.

The CH63 postcode, where the parish is located, has several times been rated the most desirable location in England to live and work. Wirral has, for the second year running, been named as 'Tree City of the Year' - an International accolade given to cities demonstrating leadership in managing their urban trees.



The Deanery and Diocese

Bebington falls within Wirral North Deanery at the northwestern corner of the Diocese of Chester. The Deanery forms an L shape across the northern half of Wirral, excluding Birkenhead and Wallasey. There is no natural centre of gravity for activities: it comprises 14 parishes, covering nearly as many separate population centres, and with 21 churches in a range of size, style and tradition. There are good relationships in the Deanery, particularly between the clergy, for whom it provides a valuable forum for fellowship and mutual support.

Synod meets three times a year, usually with a speaker on a topic of relevance, often one of the Diocesan team. Because of the size and makeup of the Deanery we do not currently have Deanery-wide initiatives involving all the churches. Some churches partner with and support one another or are involved in joint events on a local basis.

Under the Diocesan Bishop, Rt Revd. Mark Tanner (in office since 2020), the Diocese has been through a consultative vision, discernment and casting process. This has led to the formulation of a new vision under the strapline 'Together in Christ, Sharing Hope', with a clear focus on reaching the estimated 1.5m people (out of the Diocese's population of 1.65m) who do not have a meaningful connection with any church.

The outworking of the Diocesan strategy (currently under consideration) may lead to changes in the size, structure and function of the Deaneries.

Relationships With Other Churches

There are several other churches in the vicinity: Life Church (AoG), Cornerstone (FIEC), St. John's RC and Lower Bebington Methodist Church. In the past there was a moderately active Churches Together Group, but this has not so far restarted activities following the pandemic. There have been some joint activities with Life Church in the past and staff there share in our weekly Collective Worship team for St Andrew's School.

