



# **The Parish of Nork with Burgh Heath**



## **Parish Profile**





## **CONTENTS**

<b>Welcome from the Bishop . . . . .</b>	<b>3</b>
<b>Letter from the Archdeacon . . . . .</b>	<b>4</b>
<b>Introduction from the Churchwardens . . . . .</b>	<b>5</b>
<b>Vision &amp; Statement of Needs. . . . .</b>	<b>6-7</b>
<b>Challenges . . . . .</b>	<b>8</b>
<b>What we are Looking For in a Vicar . . . . .</b>	<b>9</b>
<b>Management Team. . . . .</b>	<b>10-12</b>
<b>Sundays in the Parish. . . . .</b>	<b>13</b>
<b>What we do Now. . . . .</b>	<b>14-20</b>
<b>About the Parish. . . . .</b>	<b>21</b>
<b>Parish Buildings. . . . .</b>	<b>22-23</b>
<b>Parish Finance. . . . .</b>	<b>24</b>
<b>Parish in Numbers . . . . .</b>	<b>25</b>
<b>Our Community . . . . .</b>	<b>26</b>
<b>Final Word from the Area Dean . . . . .</b>	<b>28</b>

# **WELCOME**

## **from The Bishop of Guildford**

The Diocese of Guildford is a warm and friendly place to be, with a strong cohort of gifted and passionate laity and clergy, some excellent church schools, and plenty of beautiful countryside to enjoy on a day off!

Our vision as a diocese is to see lives and communities transformed through the love of Christ; and, to that end, we have recently refreshed our Diocesan Strategy *Transforming Church, Transforming Lives*, with a particular focus on Growing Disciples, Growing Diversity and Growing Community.

Although our congregations are generally rather larger than average, we are all too conscious that we are only reaching a tiny proportion of our parish populations, and are particularly keen to become more effective in passing on the baton of faith to younger generations.

Our team of Mission Enablers are committed to working with every parish in fleshing out that vision in an appropriate way, going with the grain of the church's history and tradition, whilst also suggesting new ways to 'proclaim the gospel afresh in each generation'. The pandemic, while presenting many challenges, has helped to forge new relationships between many of our churches, creating a spirit of 'us and us' more than 'them and us', and opening up new approaches to partnership and inter-church collaboration.

If you share our vision for transformation, and have a track record in growing disciples, growing diversity and growing community, we'd love to hear from you!

***Rt Revd Andrew Watson***  
***Bishop of Guildford***





## **A Letter from Venerable Martin Breadmore The Archdeacon of Dorking**

There is much to celebrate in the parish of Nork with Burgh Heath which includes faithful congregations, at its two places of worship, who are eager to grow, have a commitment to ministry amongst children and families, a flourishing involvement with the local community, a large team of volunteers using their gifts through various ministries and being part of a very supportive Deanery.



We are seeking to appoint a full time incumbent who will prayerfully build on the strengths of this faithful community as well as further develop the existing ministry amongst children and families and outreach to the community. The new minister should have a passion for seeing people come to a living faith in Jesus, have strong pastoral and teaching gifts, have the ability to inspire others to reach out, and have a passion for engaging children and families, as well as bringing gifts of vision, strategy and collaboration.

This appointment is perfect timing for receiving resource and support from the wider diocese. 2024 marked the beginning of our second cycle of our Parish Needs Process, which is a brand-new way of working whereby the diocese will seek to walk alongside each parish to help them with vision and whatever needs they might have arising out of this.

I am very enthusiastic about this post. For the person that God calls, there is so much to offer here: the warmth of a great church family; the opportunity of leadership in a parish, deanery and diocese which offers considerable support and resources; the challenge of discerning with these communities what God is doing and how we might join in; the privilege of living and working in a part of the country with so many opportunities for clergy and families.

If you'd value an informal conversation about this post, I would be keen to speak with you, so please do not hesitate to be in touch with me via: [archdeacon.dorking@cofeguildford.org.uk](mailto:archdeacon.dorking@cofeguildford.org.uk)

## INTRODUCTION FROM THE CHURCHWARDENS



### Welcome to the Parish of Nork with Burgh Heath

We are a united church that worships across two buildings – St Paul’s in Nork and St Mary’s in Burgh Heath – brought together in 2018 with a shared desire to grow in faith, fellowship, and mission. While geographically distinct, we are one church family journeying together in the service of God and our wider community together.

Our vision is clear: Unite – Consolidate – Grow. This vision is not just a strapline, but a prayerful response to where we believe God is leading us. We have worked intentionally to build relationships across our churches, and today we celebrate a growing spirit of unity, collaboration, and shared purpose. We are committed to deepening discipleship, strengthening our ministries, and making the good news of Jesus Christ known in our community.

We are looking for a vicar who will join us on this exciting journey – a leader rooted in prayer and the teachings of Jesus, who will walk with us as we continue to build on firm foundations. We hope for someone who will bring joy, energy, and imagination to help us grow spiritually and numerically, while nurturing the church family we already hold dear.

Our church offers a warm welcome and a desire to see people of all ages come to know Christ. With active ministries for children and families, community outreach, Eco Church commitment, and strong links to local schools and organisations, we believe this is a parish rich with potential.

Thank you for taking the time to explore our profile. We pray you sense something of our heart, our hopes, and our desire to be a parish that lives out God’s love faithfully and courageously.

With every blessing



**George Drewitt**  
**Churchwarden**



**Sue Wharton**  
**Churchwarden**

## **Our Vision**

### ***Unite – Consolidate - Grow***

Our church exists to unite believers in faith and community, fostering a spirit of love and shared purpose. We seek to consolidate our strengths by deepening discipleship, strengthening ministries, and building a solid foundation rooted in Christ. Through these efforts, we aim to grow—both spiritually and numerically—reaching new people with the gospel and expanding God’s kingdom in our community and beyond.

#### **Unite – Galatians 3:26-28**

*So in Christ Jesus you are all children of God through faith, for all of you who were baptised into Christ have clothed yourselves with Christ. There is neither Jew nor Gentile, neither slave nor free, nor is there male and female, for you are all one in Christ Jesus.*



#### **Consolidate - Ephesians 2:21-22**

*In him the whole building is joined together and rises to become a holy temple in the Lord. And in him you too are being built together to become a dwelling in which God lives by his Spirit.*

#### **Grow – 1 Corinthians 3:10-11**

*According to the grace of God given to me, like a skilled master builder I laid a foundation, and someone else is building upon it. Let each one take care how they build upon it. For no one can lay a foundation other than that which is laid, which is Jesus Christ.*



## **Statement of Needs**

This Statement of Needs and Vision is aligned with our current Church Development Plan, developed as part of the Parish Needs Process.

We are a united parish — one church with two buildings — seeking a vicar to walk with us, as we build on firm foundations and step into the next season of ministry.

### **Unite – Growing Together in Discipleship and Worship**

- ◆ Encourage discipleship through teaching, prayer, and example.
- ◆ Strengthen small groups and support discipleship courses like Alpha, Bible, and Prayer Courses.
- ◆ Foster unity through shared services and parish-wide preaching series.
- ◆ Empower lay leaders and nurture a culture of “every member ministry.”
- ◆ Formalise and support a pastoral care team.
- ◆ Ensure children are welcome in all services.
- ◆ Strengthen worship and music ministries across styles and ages.

### **Consolidate – Strengthening Our Foundations**

- ◆ Secure financial resilience through giving, grants, and events.
- ◆ Make the best use of our buildings for mission and income.
- ◆ Deliver key projects including St Paul’s roof and the Church Hall refresh.
- ◆ Lead us forward in our Eco Church commitments and Net Zero plan.
- ◆ Explore site development opportunities at Nork.
- ◆ Strengthen governance, planning, and communications.
- ◆ Deepen local partnerships with schools, care homes, and community groups.

### **Grow – Extending Christ’s Love Outward**

- ◆ Support and grow ministries for families and children (Messy Church, Community Alive, Forest Church, Little Roots).
- ◆ Build connections with local teenagers and help establish a youth group.
- ◆ Strengthen relationships with local schools and wider community groups.
- ◆ Embrace a range of worship styles as expressions of shared faith.
- ◆ Be present at community-facing events and occasional offices.
- ◆ Help us improve communication across platforms — leaflets, signage, social media.
- ◆ See our environmental work as a mission opportunity.



## Challenges

As we look to the future with hope, we also recognise key challenges where we seek growth, support, and shared leadership with our new vicar.

- ◆ Declining and ageing attendance: Core congregation is faithful, but shrinking and ageing. Growing younger generations is a priority.
- ◆ Youth and young adult ministry: Strong children's work, but limited engagement with teens and young adults.
- ◆ Financial resilience: Stable but reliant on ageing and shrinking congregation.
- ◆ Buildings and infrastructure: Ageing facilities with some major works planned. We aim to maximise them for mission and income.
- ◆ Difference in traditions and identity: Two buildings, one church — continuing to build unity across styles and congregations.
- ◆ Leadership capacity: Strong lay involvement, but limited time and resources. We need encouragement and clear direction.
- ◆ Living in Love and Faith (LLF): Not yet considered by the PCC or wider church. A wide range of views exist, as in many parishes.

We bring these challenges to God in prayer, trusting that they are also opportunities for renewal and growth.

## **Our New Vicar**

We are prayerfully seeking an enthusiastic, insightful, and strategic vicar who will journey with us as we discern and shape God's vision for our parish. Building on our current mission and ministry, we are looking for someone who can both help us develop the vision and bring it to life.

They should be:

- ♦ Rooted in scripture, enthused about the power of prayer, the work of Jesus and His Holy Spirit.
- ♦ Passionate about introducing people to the living Lord Jesus.
- ♦ Approachable and caring, valuing everyone.
- ♦ Collaborative and encouraging, gifted in envisioning, energising, and enabling those around them.
- ♦ Comfortable delegating, and encouraging of shared ownership of ministry across the church family.
- ♦ Able to communicate clearly, and encourage others to do so.
- ♦ Confident in enabling people to grow in Christ-like maturity as disciple-making disciples.

We would look for them to:

- ♦ Be forward thinking and lead with energy and inspiration.
- ♦ Teach and preach the word of God, competently and confidently, in services with different worship styles.
- ♦ Be attentive to the rhythms of the church calendar.
- ♦ Communicate a living faith that is deeply rooted in the teachings of Jesus.
- ♦ Model discipleship in a way that builds up the body of Christ in unity and purpose.
- ♦ Have a heart for community engagement, looking to build on community links, and being a visible presence in the parish.

## Management Team



**George Drewitt**  
**Churchwarden**



**Sue Wharton**  
**Churchwarden**



**Tomos Davies**  
**Treasurer / PCC**



**Karen Davies**  
**Safeguarding Officer / PCC**



**Michelle Cahill**  
**Operations Manager /**  
**PCC Secretary**



**Andrew Shaw**  
**LLM**



**Theresa Allen**  
**PCC**



**Ruth Eardley**  
**PCC**



**Chris Moore**  
**PCC**



**Morna Moore**  
**PCC**



**Neill Oakley**  
**PCC/ Deanery Synod Rep**



**Judy Parnall**  
**PCC**



**Karen Quin**  
**PCC**

## **OUR CHURCHWARDENS**

Our churchwardens hold our church family together with grace, wisdom, and an unwavering heart for service. They carry their responsibilities with humility, faithfulness, and a deep love for our parish, ensuring that our church is not only well cared for, but that it is also a place of welcome and warmth. Their diverse skills make them an invaluable support to both clergy and congregation, working tirelessly behind the scenes to ensure that all runs smoothly. They bring excellent leadership, skilfully balancing the needs of a varied church family with a wide range of views, always striving to ensure that everyone feels heard, valued, and supported.

Their talents and experience are as varied as they are, and each brings unique strengths that complement the other. Their passion for children's work and family ministry shines through, helping younger generations feel included and inspired. We are truly blessed by their dedication, servant-hearted spirit, and their ability to lead with both wisdom and compassion.

## **OUR PCC**

Our Parochial Church Council (PCC) is truly a blessing to our parish. We are gifted with a group of unique and talented individuals, each bringing their own wealth of experience, skills, and passion. With backgrounds ranging from business and education to health, pastoral care, and human resources, they each offer valuable perspectives that strengthen our church community.

Every member has been entrusted with an area of church life to steward, supported by members of the church family, using their personal resources, expertise, and creativity to serve faithfully. Together, their diverse talents enable the PCC to approach decisions with wisdom and care, always seeking to honour God and nurture the life of our parish.

Working collaboratively and prayerfully, the PCC supports our clergy and congregation, ensuring that our vision for the future is both grounded in faith and responsive to the needs of our community. We are truly blessed by their dedication and servant-hearted leadership.

## **OUR OPERATIONS MANAGER**

Our Church Operations Manager is the beating heart of our parish – the quiet force whose dedication ensures every part of church life runs smoothly. Her work touches every corner of our ministry, from bookkeeping and preparing management accounts, to managing hall bookings as opportunities for outreach, to overseeing the care and maintenance of our buildings with skill and stewardship.

Her role is both practical and pastoral. Always approachable and ready to help, she offers guidance and support to clergy, parishioners, and those in need. She plays a vital part in our worship, preparing service materials and AV resources that make every Sunday welcoming and accessible.

Her attention to detail also extends to the website and communications, keeping the parish informed and connected. She plays a key part in compiling the parish profile and other key documents that reflect the heart and hopes of our church. Her administrative work is second to none – from filing policies to managing rotas, and supporting the PCC. She holds the threads of our church life together with professionalism, humility, and grace.

Above all, this is not just a job to her – it's a calling. Her loving and servant-hearted approach to everything she does reveals a deep commitment to God's work through the local church. She is a friend, leader, organiser, and encourager, and we are deeply blessed by her ministry among us.



# **The Parish of Nork with Burgh Heath**

## **THE BODY OF CHRIST**



### **Leadership**

**Vicar: You?**

**Wardens: George & Sue**

Parish Profile & Vision

PCC

Teams

### **Pastoral Care**

**Karen D**

Safeguarding,  
Pastoral Assistants,  
Life Events,  
Residential Homes

### **Eco Church**

**George & Michelle**

A Rocha, Carbon Net Zero,  
Environment

### **Mission & Outreach**

**Chris & Theresa**

Alpha, Bacset,  
Bridges Nepal, LCM,  
Street Pastors, CAP,  
Refresh@10,  
Prison Ministry,  
Foodbank,  
Christian Aid, Events

### **Communications**

**Michelle & Morna**

Website, Socials,  
Newsletters,  
Flyers, What's On

### **Weekly Worship**

**Michelle & Neill**

Service Planning, Preachers,  
Music, Chalice,  
AV, Attendance, Festivals

### **Prayer & Discipleship**

**Judy & Andrew**

Monday Prayer Meeting,  
Small Groups,  
Church Prayer Meetings,  
Prayer Guide

### **Children's Ministry**

**Ruth & Karen Q**

Community Alive,  
Trailblazers, Little Roots,  
Messy Church, Forest  
Church, Schools, Scouts

### **Buildings and Finance**

**George, Sue, Tomos,  
Michelle**

Financial Accounts, Budget,  
St Mary's, St Paul's,  
Church Hall, Scout Hut,  
Gardening, Cleaning, Staff

## Sundays in the Parish

We currently hold two Parish Communion services each month (three if there is a fifth Sunday), alternating between our two buildings. These services are central to our life together, offering space for worship, reflection, and community.



On the second and third Sundays, we place a special emphasis on including and engaging the younger members of our Church Family. The second Sunday features Community Alive at St Paul's, and the third Sunday Messy Church at St Mary's.

Both are lively, all-age services that brings Bible themes to life through storytelling, music, crafts, and interactive worship, giving families the opportunity to explore faith together in creative and accessible ways. To ensure that all spiritual needs are met, a Communion service is held at the alternate church on these Sundays.



On the fourth Sunday of each month, during the communion service, children are invited to take part in our Trailblazers sessions — a time of stories, discussion, and crafts based on the readings of the day, designed to help our younger members grow in faith within a nurturing environment.

Both churches offer a warm and welcoming atmosphere, with a blend of traditional and contemporary music, and the opportunity for prayer ministry following the service. Refreshments are served after every service, providing time for fellowship, conversation, and the deepening of community ties.



## What We Do Now

### Governance & Safeguarding

Our Parochial Church Council (PCC) comprises a diverse and committed group of individuals, bringing with them a broad range of skills, experiences, and perspectives. This collective expertise enables the PCC to provide strong, effective governance in support of the life and mission of the parish. The PCC meets regularly—typically on a monthly basis—to review and monitor the core responsibilities of parish governance. These include key areas such as finance, Health & Safety, and Safeguarding. The Standing Committee sets the agenda for each meeting.

Safeguarding is a priority at every level of parish life, and we seek to convey through our services that everyone has a responsibility for safeguarding. We are deeply committed to ensuring that our church is a safe, nurturing, and welcoming place for all - particularly children, young people, and vulnerable adults. To this end, the PCC has formally adopted and diligently follows the Diocese of Guildford Safeguarding Policy. These policies and procedures reflect our responsibility not only to prevent harm, but to proactively promote the wellbeing, dignity, and rights of every individual in our church community. Our aim is to create an environment in which everyone can participate confidently and securely in the worship and wider life of the parish.

We are fortunate to have a highly experienced Parish Safeguarding Officer, who leads on safeguarding matters and provides ongoing support and guidance to the PCC and wider congregation. All individuals working with children, young people, or vulnerable adults are subject to enhanced Disclosure and Barring Service (DBS) checks, and receive appropriate safeguarding training in line with diocesan and national guidelines. We also hold a dedicated “Safeguarding Sunday” service every year.

### Pastoral Care

Pastoral Care is at the heart of our parish life - a tangible expression of Christian love, compassion, and community. It reflects our commitment to nurturing a church where all feel welcomed, supported, and valued, regardless of age, background, or circumstance. While much care happens informally in everyday relationships, we also have a structured team in place to ensure no one is left unsupported - particularly in times of need.



The Pastoral Care Team - recruited in line with the Church of England’s Safer Recruitment practices - are dedicated volunteers who offer a listening ear, practical help, prayerful support, and a reassuring presence. For those who cannot attend church, in the short or long term, we offer phone check-ins, personal visits, and prayers and communion at home. For those struggling at a time of need, we are there to listen. Each visit or call is recorded carefully on our dedicated system.

Our pastoral mission is to ensure that those facing illness, bereavement, isolation, or emotional challenges receive timely and sensitive support, rooted in Christian compassion.



## What We Do Now

### Children & Schools Ministry

As well as our children's services mentioned in the Sundays Section - Community Alive, Messy Church, Trailblazers, and Forest Church - we have excellent links with local schools. The Warren Mead Nursery, Infant, and Junior Partnership, caters for children aged 4-11 years of age with a nursery provision on site from age 2. We also have links with Aberdour School, who regularly visit St Mary's. We invite the schools into the churches and regularly attend assemblies - these are relationships we particularly want to nurture and develop.



### Nursing Home Ministry

Our parish is blessed to serve a number of residential homes that care for the elderly, individuals with learning disabilities, and those living with dementia or physical challenges.



We strive to maintain regular contact with these homes and currently provide monthly ministry at two of them.

At one home, we offer an informal pre-sanctified service, filled with joyful music, tambourines, and an atmosphere of celebration. The other home receives a more traditional monthly Communion service, including hymns and worship songs. Each service includes a short, thoughtful reflection tailored to the residents.

At Christmas, we celebrate with a special Carol Service, featuring well-loved carols that residents can sing along with and enjoy.

### Small Groups

Small groups play a vital role in the life of our church, offering opportunities for fellowship, prayerful support, and spiritual growth. Meeting both during the day and in the evenings to accommodate different schedules, these groups are led by members of the church family.

The number of groups has varied over time, and we currently have three that meet regularly. Some have developed organically from Alpha or Christianity Explored courses, as participants have chosen to continue journeying together in faith. Many groups also share meals from time to time, deepening community and connection.

### Prayer

Prayer is at the heart of our life together at Nork with Burgh Heath, and we are committed to deepening this vital part of our spiritual journey. On Sundays, our intercessions include regular prayers for our mission partners, alongside local, national, and global concerns. Throughout the week, prayer continues in a variety of ways. A small online prayer group meets every Monday, lifting up the sick, the needy, the parish, and the wider world.

On the first Tuesday of each month, we gather for a Parish Prayer Meeting, which includes worship, reflection, and intercession. We also hold occasional special gatherings, such as a Day of Prayer on a Saturday, or a Season of Prayer during weekday mornings at different points in the year. We recognise that prayer is both personal and communal, and we seek to offer opportunities that nurture both — drawing us closer to God and one another.



## What We Do Now

### Mission and Outreach

#### Mission Partners

We supported the following Mission Partners in 2024, prayerfully, financially, and by regular contact with each of them. Our Mission Partners are:

- The Baxter's African Children's School Educational Charitable Trust (international)
- Bridges Nepal, to prevent human trafficking (international)
- Open Doors, who support persecuted Christians across the world (international)
- Christians Against Poverty - supporting those struggling with finances (local)
- Street Pastors in Sutton (local)

We also prayerfully support London City Mission (local)



#### Operation Christmas Child

As part of our commitment to sharing Christ's love beyond our parish, we actively support Operation Christmas Child, the annual shoebox appeal run by Samaritan's Purse. In 2024, our parish sent an incredible 102 filled boxes, generously contributed by individuals, families, and church groups. The initiative is supported by visible and engaging displays in both churches each autumn, helping to raise awareness and encourage participation across the congregation and wider community.

#### Foodbank Collections

Our parish actively supports the Epsom & Ewell Foodbank, part of the Trussell Trust network—a vital ministry offering emergency food and support to those facing hardship. We maintain Foodbank collection points at both St Paul's and St Mary's, with a dedicated monthly collection at St Paul's that is consistently and generously supported by both church members and the wider community.

Each month, a wide range of food and essential items is gathered—simple yet significant gifts that help alleviate hunger and show practical compassion.

Rooted in our Christian calling to love and serve our neighbours, this ministry reflects our commitment to meeting real needs with both action and prayer. Like the Trussell Trust, we share a vision of a future where no one needs a foodbank. We are grateful to play a small but meaningful role in that mission.



## What We Do Now

### Eco Church and Sustainability

At Nork with Burgh Heath, caring for creation is an integral part of our Christian discipleship and church life. We have a dedicated Eco-Team and are proud to be a Bronze Award holder at both churches in the national Eco Church scheme. We are actively working towards Silver awards. Environmental themes are regularly incorporated into our worship, teaching, and prayer, and we've taken practical steps to reflect our commitment - from managing our church grounds encouraging biodiversity, to supporting local and global justice initiatives. Sustainability is something we engage with as a whole church community, encouraging one another to live responsibly and with care for God's creation.



We are also committed to the Church of England's target of achieving net zero carbon emissions by 2030. A major milestone has been the replacement of the oil boiler at St Paul's with efficient electric infrared heating, and we plan to convert the heating systems in our other buildings in due course. We've developed a Net Zero Plan to guide our progress, and continue to reflect, pray, and act together.

### Parish Walking Group

Our Parish Walking Group offers a wonderful opportunity for fellowship, exercise, and appreciation of the natural world. The group meets monthly on the third Saturday (excluding August and December) and each walk is led by a member of the group. Walks are typically around four miles, starting at 10:30am from locations within a 45-minute drive of the parish.



Each walk is an invitation to enjoy God's creation together, enjoying time outdoors in all seasons. The walk is usually followed by an optional lunch in a local pub or, weather permitting, a picnic. Everyone is welcome, including dogs, and we aim to create a relaxed, friendly atmosphere for all ages and abilities.

### Craft & Chat

This group of ladies meets in the Vestry at St Mary's from 2-4 pm on the first, third, and fifth Wednesdays each month. In our first six months, we have knitted squares for a large blanket and smaller lap blankets, that will be taken by one of the Church members to an old people's home in Romania. We have made Easter cards for the elderly and sick, and hats for Christmas shoeboxes.





## What We Do Now

### Refresh@10

Refresh@10 is our monthly coffee morning, held on the last Saturday of the month at St Mary's Church, Burgh Heath, from 10am to 12 noon. It is a relaxed and friendly gathering, offering a warm welcome to everyone from the church and the wider community, whatever their age or background. It's a space where new friendships are made, and existing ones are strengthened.

Every coffee morning offers something unique, but there is always freshly brewed coffee, tea, and a tempting selection of homemade treats. Activities might include a book table, crafts, children's toys, hand massages, games, or informal talks from members of the congregation. Gentle background music creates a calm, welcoming atmosphere - perfect for those who simply want to sit, relax, and enjoy good company.

### Little Roots Toddler Group

Our thriving toddler group, Little Roots, meets every Tuesday and Wednesday during term time, from 9-11am at St Paul's. It provides a warm, welcoming space for pre-school children to explore, play, and grow through a wide range of activities, crafts, song, and story time.

Little Roots is not just for the children - it's a valued place of community and support for parents, grandparents, and carers, who can enjoy a cup of tea or coffee whilst connecting with others in a relaxed and friendly environment. It's a space where friendships are formed, encouragement is shared, and the roots of community are nurtured from the earliest years.

### Prison Ministry

Within two miles of our two churches are two prisons. One is a women's HMP Downview, housing 350 women. It is a closed prison but with an open wing, which enables some women who have served an appropriate part of their sentence to go out to work, or take up educational studies.

The other prison is HMP High Down, who has 1100 men in residence. It is described as a re-settlement prison, which is preparing men for release. However, both prisons do have prisoners serving life sentences.

Both prisons were opened in the late 1980s and, at that time, a Prison Fellowship was formed to support in prayer those behind the walls (although for Downview it is a wire fence), and the work of the prison chaplaincy. Volunteers from Prison Fellowship were invited into the prison to be part of the Sunday worship congregation, and their presence continues to be a help with many chaplaincy activities as well. These include pastoral work, Bible studies, prison visiting, the Angel Tree Project - for the children who have a parent in prison at Christmas, and Mothers' Day for Young Offenders to be able to send a gift to their mothers, on that day when all mothers are remembered.

St Mary's and St Paul's Nork have supported the work of volunteers over the years, both in prayer and financially. The presence of these prisons, at such close proximity to us, are a reminder of those in our society who live on the margins of life. Christ had concern for these people, as described in Matthew Chapter 25, when He said: 'I was in prison and you visited me'. These words are a direct command, and a reminder that such people must not be forgotten.





## What We Do Now

### Fundraising

We see fundraising as an important part of our stewardship responsibilities. We are dedicated to caring for the resources entrusted to us - our buildings, our ministries, and our mission. Alongside the generous giving of our congregation, we are proactive in seeking grants and other funding opportunities, to ensure that every pound is used wisely and effectively. This commitment allows us not only to maintain and improve our facilities, but also to create spaces where worship, community, and outreach can continue to flourish for years to come.

We are incredibly grateful for the generous support we've received to help care for and maintain our church buildings. Most recently, we have been awarded:

- ◆ £20,000 from Marshalls Charity
- ◆ £29,000 from the Church of England's Boiler Hardship Fund

These grants have enabled us to move forward with our vital heating project, ensuring our church remains a warm and welcoming place for worship and community use throughout the year.

But this is just the beginning. We are now planning the next phase of improvements, which include:

- ◆ Replacing ageing flat roofs and windows at our St Paul's site
- ◆ A much-needed refresh and a new kitchen in our church hall, so it can better serve the community
- ◆ Ongoing maintenance and essential updates to keep our buildings safe, warm, and accessible

Alongside the generous giving of our congregation and local fundraising efforts, we actively seek out grant funding to help us achieve these goals. We see this as an important part of our stewardship - ensuring we use every opportunity to care for our resources while serving the wider community.

Together, we can make these plans a reality.

Every gift, grant, and act of support brings us closer to creating spaces that not only meet practical needs, but also inspire worship, fellowship, and service. With continued generosity and encouragement, we can ensure our church buildings remain a place of welcome, hope, and community for generations to come.



## What We Do Now

### Fundraising

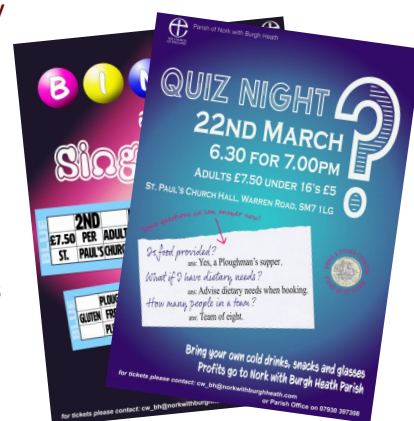
As a parish, we run a variety of fundraising events, to boost parish funds and to help other charities and worthy causes.

### Fundraising Group

Our Fundraising Action Group, affectionately known as FROG and led by our wonderful churchwarden, Sue, plays a vital role in parish life.

Through a variety of fun and engaging events - including quiz nights, bingo evenings, and more - FROG helps to raise essential funds for the parish, while also fostering a strong sense of community and fellowship.

These events regularly attract not only church members but also friends and neighbours from the wider community, helping to build relationships, and offer a welcoming space for all. FROG combines generosity with joy, making fundraising an opportunity for connection, laughter, and shared purpose.



### Ride & Stride



Each year, we encourage members of our parish to take part in Ride & Stride, a county-wide initiative organised by the Surrey Churches Preservation Trust. Participants walk, cycle, or ride between local churches to raise funds for the upkeep of historic places of worship across Surrey - including our own. It's a fun and active way to support church heritage, while enjoying the beautiful countryside and deepening connections with other church communities.

Last year our fabulous churchwarden, George, took part as a cyclist, raising funds not only for the Trust but for the parish.



### Parish Plant Sale

Every year, a dedicated team from the parish organises our popular Parish Plant Sale — a vibrant event that brings together the church and local community. A wide variety of plants, flowers, and seedlings are available to buy, alongside homemade cakes and hot and cold drinks, creating a warm and welcoming atmosphere for all who attend.

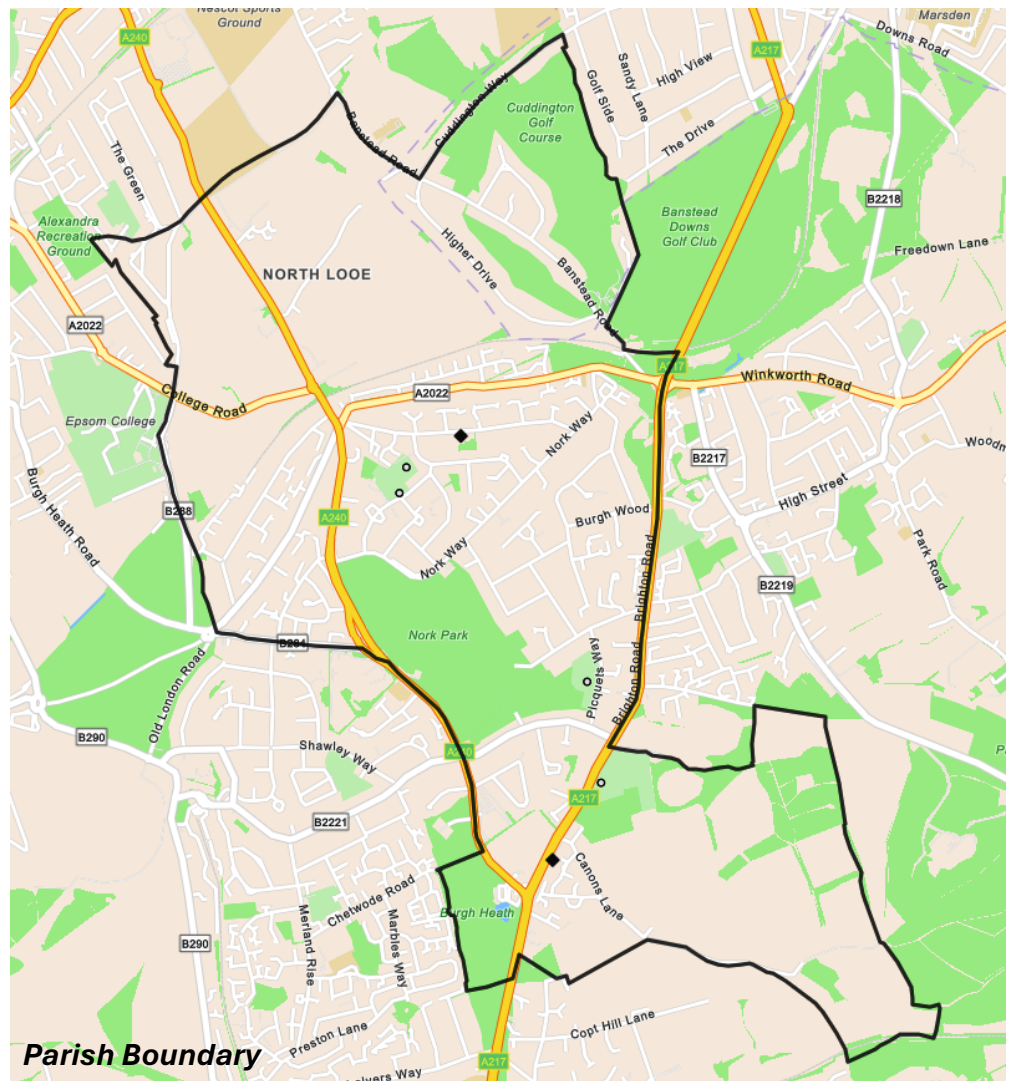
The sale raises valuable funds for two of our mission partners: BACSECT and Christian Aid (in addition to our regular envelope collection in Christian Aid week), supporting their work both locally and globally. But the event is more than just a fundraiser — it's an opportunity to encourage sustainable living, inspire people to grow their own produce, and strengthen community connections through shared conversation, hospitality, and generosity.



## About the Parish

The Parish of Nork with Burgh Heath is a welcoming and attractive area, situated on the edge of the North Downs in Surrey. It offers a unique blend of suburban convenience and access to beautiful open countryside, making it an ideal place to live and work. Known for its friendly community atmosphere, the parish has a mix of long-established residents and young families, giving it a vibrant yet homely feel.

- ◆ The area is surrounded by green spaces, including Nork Park, Epsom Downs, and local woodlands, all of which provide opportunities for walking, cycling, and enjoying nature. Everyday life is supported by local shops, cafés, and small businesses, while larger retail centres and leisure facilities can be found in nearby Banstead, Epsom, Sutton, and Kingston.
- ◆ **Transport and Connectivity:** With excellent transport links, the parish is well placed for commuting. Nearby railway stations at Banstead, Epsom Downs, and Epsom offer regular services to London Victoria and London Bridge. The M25, A217, and A24 are close by, giving easy access to Gatwick, Heathrow, and the South Coast.
- ◆ **Schools and Education:** Families are well catered for with a range of highly regarded schools, both primary and secondary, along with independent options and nearby sixth form colleges. The proximity of London and Surrey also provides access to world-class universities and cultural opportunities.
- ◆ **Healthcare and Services:** The area offers good healthcare provision, with local GP surgeries, dental practices, and pharmacies, while Epsom and Sutton hospitals provide comprehensive care when needed.
- ◆ **Lifestyle and Recreation:** A variety of sports clubs, fitness centres, and golf courses can be found locally, alongside theatres, cinemas, and restaurants in the nearby towns. The parish combines a sense of village life with the convenience of modern amenities, creating a safe and welcoming environment for individuals and families alike.





## Churches and Church Hall

St Paul's Nork, is situated midway along Warren Road, nestled beside the ancient woodland of The Roundwood. St Paul's was opened in 1930, initially as a 'daughter' Church of All Saints, Banstead. The 'story' is told that the then vicar of All Saints, the Rev A W Hopkinson, drew a sketch, which became the basis for the design of the original St Paul's Church. It was said to resemble the inside of an ark, but upside down. The Church was slightly damaged in 1944 during WWII. In 1958 the Church was extended by the addition of north and south aisles.

Following a successful fundraising challenge, the interior of the Church was restored in 2007 and in 2009/10 facilities were improved by the formation of a kitchen, library and crèche area for young children. St Paul's has a memorial window dedicated to Marie Lloyd, of Music Hall Fame, as well as the last local memorial to past residents of Banstead Cottage Homes who lost their lives in WWI.



Alongside St Paul's stands the church hall, originally replaced in 1957 with a prefabricated building. This space is widely used by both church and community — from parish events and children's parties, to a local pre-school group, a judo club, a dance school, and even a polling station. A nearby scout building, built on church land, is actively maintained and used by local uniformed organisations. Behind the hall is Round Wood, the parish's very own woodland and natural habitat.

St Mary's, Burgh Heath lies southeast of St Paul's, on the eastern side of the A217. Built in 1909 to serve a growing local population, it has had a varied history.



After a proposed closure in 1980 was overturned, a church plant from St Paul's, Howell Hill, revitalised the community in 2002, with formal transfer to that parish occurring in 2004. Since then, the church building has seen significant investment: internal redecoration, roof repairs, organ restoration, kitchen installation, upgraded sound and lighting, resurfaced car park, and accessible facilities have all contributed to creating a more welcoming and functional worship space.

In 2018, the churches of St Paul's, Nork and St Mary's, Burgh Heath were united into a single parish, creating a wider and more diverse worshipping community while maintaining distinct identities and local presence.

## The Parish Houses

### The Vicarage, SM7 1LG

Built in the late 1920s, the Vicarage is a generous and well-designed six-bedroom home set immediately beside St Paul's. The house enjoys a large garden, garage, and off-street parking, making it ideal for both family life and parish hospitality. Situated on a quiet residential road, the Vicarage is conveniently close to schools, transport links, and local amenities.

#### Ground Floor:

A spacious entrance hall, with a cloak area and toilet, leads to a bright open-plan kitchen, a small office/study, and two reception rooms, providing ample space for family living and entertaining. The kitchen connects to a utility room and a second downstairs toilet.

#### First Floor:

There are four comfortable bedrooms, a family bathroom, and an additional shower room. Two of the bedrooms also feature their own washbasin.

#### Second Floor:

This level offers two additional bedrooms, a walk-in wardrobe area, and loft storage.

#### Outside:

The property has a large and attractive garden, mostly laid to lawn, and includes a garage and a distinctive roundabout-style driveway with off-street parking. From the utility room, there is access to the rear of the garage, a charming courtyard with a log store, and a garden shed.



### 19 Ballards Green, KT20 6DA

In 2010, the parish purchased a three-bedroom house in Burgh Heath to provide a home for the minister of St Mary's and their family. The property is currently let, providing a valuable source of income, and was used by a Curate until July 2025.

This comfortable home features two reception rooms, a kitchen, a downstairs cloakroom, and a private garden. Upstairs, there are two spacious bedrooms (one with an ensuite), a smaller single bedroom, and a family bathroom. The former garage has been converted into a versatile study/office.



## Parish Finance

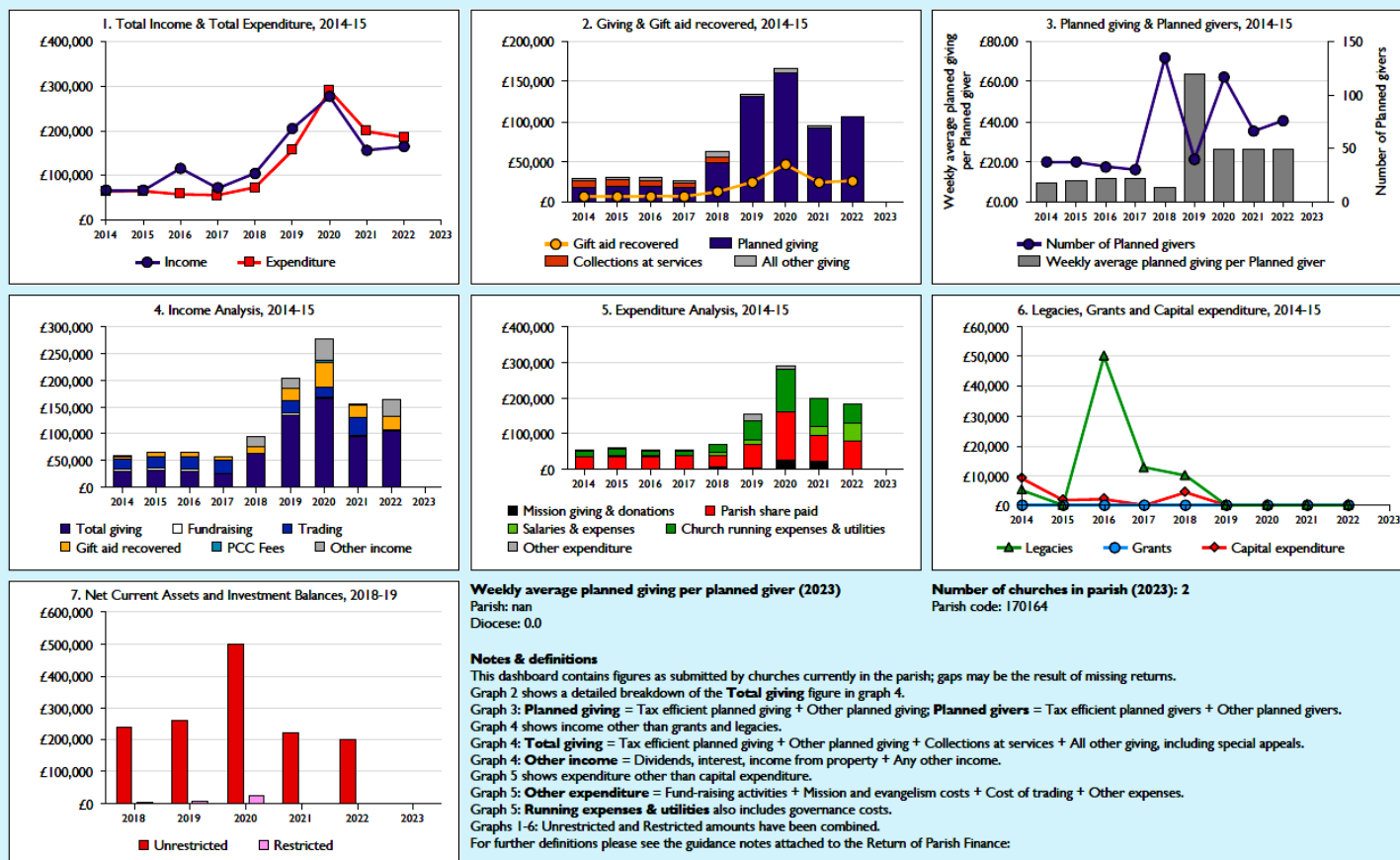
The parish of Nork with Burgh Heath has a stable financial position, underpinned by consistent giving and careful stewardship of resources. Over the past decade, both income and expenditure have fluctuated, with peaks around 2019–2020 reflecting a period of higher giving and planned investment. In recent years, income and expenditure have broadly balanced at around £200,000 annually, demonstrating prudent financial management.

Planned giving, supplemented by Gift Aid and collections at services, remains the primary source of income, alongside additional contributions from fundraising, trading, and PCC fees. A noticeable increase in planned giving between 2018 and 2020 supported a period of growth, with ongoing commitment from a faithful core of givers.

Expenditure is mainly directed towards Parish Share, church running costs, and mission giving, with occasional capital expenditure and investment in special projects. Legacies and grants have also provided valuable one-off boosts.

The parish is committed to responsible and transparent stewardship of its finances. All transactions are recorded using the Xero accounting system, ensuring accuracy and clarity. Each month, the PCC reviews detailed management accounts alongside up-to-date reports against budgeted figures, enabling effective oversight and careful financial planning.

### Finance Dashboard for the Parish of Nork w Burgh Heath in the deanery of EPSOM



Variations from year to year may be the result of changes in the number of churches that submitted returns, or changes in parish/benefice structure.

Number of churches included in returns: 2014 1; 2015 1; 2016 1; 2017 1; 2018 2; 2019 2; 2020 3; 2021 2; 2022 1.

Produced by Data Services, Church House, Great Smith Street, London SW1P 3AZ. Date of production: 09/10/2024.

Every effort has been made to ensure that data are reliable. We would be pleased to be notified of any significant errors or omissions by email to [statistics.unit@churchofengland.org](mailto:statistics.unit@churchofengland.org)

Follow us on Twitter:  
[@cofestats](https://twitter.com/cofestats)

THE CHURCH OF ENGLAND

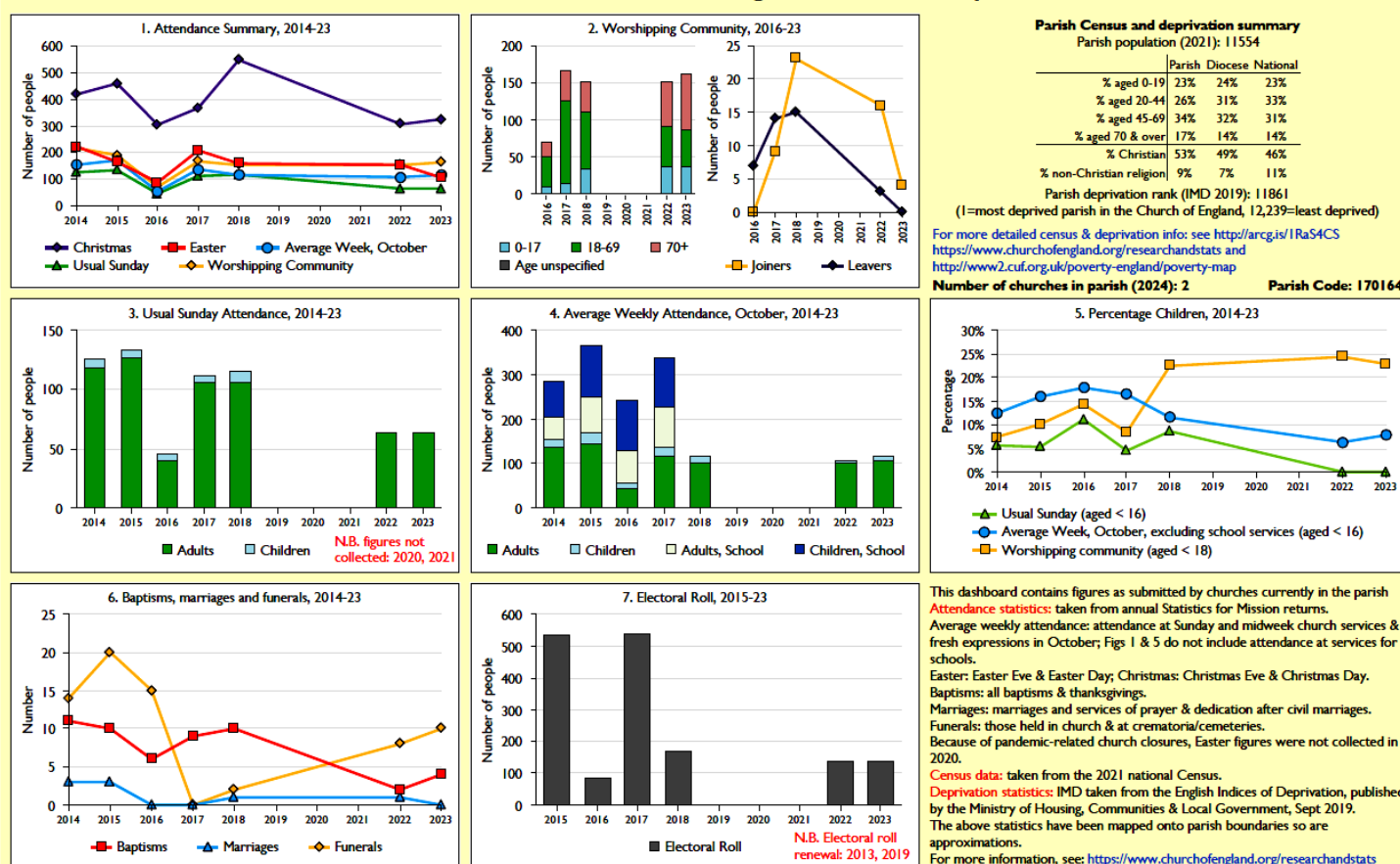
## Our Parish in Numbers

The parish maintains a steady and engaged worshipping community. Over 300 people attended Christmas services in 2023 — including Christingle and Crib services — while Easter services across both churches attract around 100 people. Regular Sunday services draw around 70 attendees, with numbers rising to around 100 when including our broader worshipping community through Community Alive and Messy Church, where children often make up more than 20% of those attending.

In 2023, we celebrated 4 baptisms and conducted 10 funerals. While there were no weddings that year, the parish remains open and welcoming to those enquiring. The electoral roll has remained stable, reporting 96 members at the April 2025 APCM. Children are especially welcomed at our monthly all-age services at both churches, and new efforts such as Trailblazers (launched in early 2025) are enriching children's engagement during regular Sunday services.

While attendance data reflects natural dips during the COVID-19 pandemic, recent figures show encouraging signs of recovery in line with diocesan trends.

### SfM Dashboard for the Parish of Nork w Burgh Heath in the deanery of EPSOM



Variations in attendance from year to year may be the result of changes in the number of churches that submitted returns, or changes in parish/benefice structure.

Number of churches included in returns: 2014 2; 2015 2; 2016 1; 2017 2; 2018 2; 2019 0; 2020 0; 2021 0; 2022 2; 2023 2.

Produced by Data Services, Church House, Great Smith Street, London SW1P 3AZ. Date of production: 06/07/2024.

Every effort has been made to ensure that data are reliable. We would be pleased to be notified of any significant errors or omissions by email to [statistics.unit@churchofengland.org](mailto:statistics.unit@churchofengland.org)

Follow us on Twitter:  
[@cofestats](https://twitter.com/cofestats)

**THE CHURCH OF ENGLAND**

## Our Community

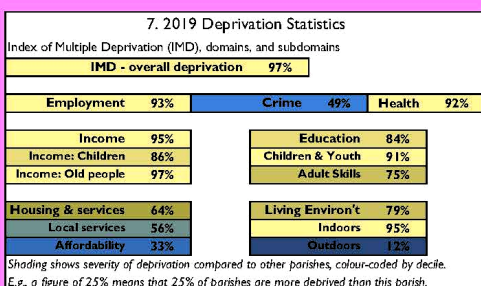
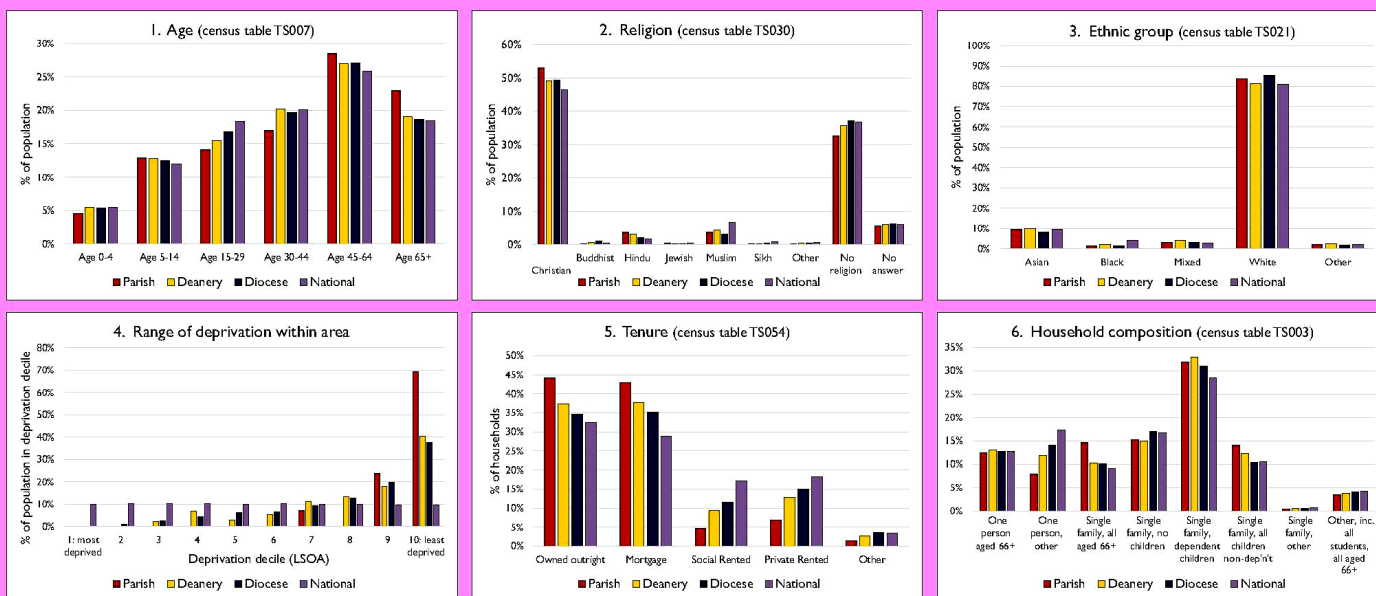
The Parish of Nork with Burgh Heath, part of the Deanery of Epsom, serves a population of 11,554 across 4,350 households. The area has a predominantly family-oriented character, with a slightly older age profile than the national average. Almost a third of residents are aged 45–64, and there is a healthy proportion aged 65 and over, contributing to a stable, long-term community. The number of children and young people (0–14) is broadly in line with diocesan and national trends.

Religiously, around 50% of residents identify as Christian—higher than diocesan and national levels—while approximately 40% report no religious affiliation. Small but notable communities of other faiths, including Hindu, Muslim, and Sikh, are also present. The population is predominantly White (about 90%), with minority ethnic groups including Asian, Black, and mixed-heritage residents. The community is marked by high levels of home ownership, with most properties owned outright or mortgaged—well above the national average. While most households are family-based, there is also a significant number of single-person households, particularly among older residents.

The parish is relatively affluent, with low levels of deprivation and strong indicators in employment, housing, income, education, and health. Crime rates are low, and the population is generally highly skilled and economically stable.

Nork and Burgh Heath maintain a village feel within a suburban setting, combining family life with a strong retired community. This creates a supportive environment but also presents opportunities for mission, particularly in engaging younger families and reflecting the Church's generational diversity.

### National Census 2021 Dashboard for the Parish of Nork w Burgh Heath in the deanery of EPSOM



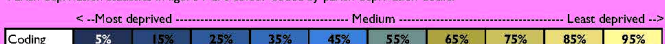
	Parish	Deanery	Diocese	National
Population	11,554	128,468	1,076,209	56,506,784
Occupied households	4,350	49,894	429,599	23,444,438
Living in households	11,357	125,860	1,050,561	55,542,946
Average household size	2.61	2.52	2.45	2.37
Living in communal estab'ts	197	2,608	25,648	963,838

Parish, Deanery and Diocese codes	
Parish	170164 Nork with Burgh Heath
Deanery	17203 EPSOM
Diocese	17 Guildford

#### Notes & definitions

Census and deprivation statistics have been mapped onto parish boundaries, and are therefore approximations. Census data as shown in figures 1-3, 5, & 6 are derived from the National Census 2021 produced by the Office of National Statistics (ONS). For details from ONS see: [https://www.nomisweb.co.uk/sources/census\\_2021](https://www.nomisweb.co.uk/sources/census_2021). Deprivation statistics are derived from the English Indices of Deprivation 2019, produced by the Ministry of Housing, Communities & Local Government. More details can be found at: <https://www.gov.uk/government/statistics/english-indices-of-deprivation-2019>. Deprivation statistics are published at LSOA level. Figure 4 shows how the population of each area is split across LSOAs, categorised by LSOA deprivation decile. For more detailed parish census and deprivation information, see: <https://www.churchofengland.org/about/data-services/resources-publications-and-data#na>. For an interactive map showing parish deprivation and census statistics, see: <http://arcgis.js/1Ra54CS>.

Parish deprivation statistics in figure 7 are colour-coded by parish deprivation decile:



Produced by the Data Services Team, Church House, Great Smith Street, London SW1P 3AZ. Date of production: 27/2/2024. Version 32; Index: 2220

Every effort has been made to ensure that data are reliable. We would be grateful to be notified of errors and to receive comments/suggestions: please email [statistics.untr@churchofengland.org](mailto:statistics.untr@churchofengland.org)

## **What the Church Family Say**

**The Children: “Who would you like our new Vicar to be?”**

**kind**

**help  
people**

**do  
craft**

**nice &  
friendly**

**tell us  
what  
to do**

**generous**

**tell us  
about  
Jesus**

**The Adults: “What does the Parish mean to you?”**

*The church is my family, which has embraced me  
and helped me and is full of my friends.*

*Everyone is so friendly!*

*I love Messy Church because of the people and how they welcome us;  
their kindness and thoughtfulness.*

*Friendly and prayer centred, with good teaching.*

*The friendships and prayerful support have been essential to me.*

*I know that, in the hard times, I have people who will support me  
and pray for me with love.*

*Great worship - very friendly and welcoming.*

*Fantastic welcome, wonderful worship, the Word explained,  
believing prayer, hope for the future.*



## The Banstead Five

Our parish is part of a collaborative group known as the Banstead Five Churches (or the Banstead 5), which brings together five local interdenominational churches: the Parish of Nork with Burgh Heath, All Saints Banstead, Banstead United Reformed Church, St Ann's Catholic Church, and Banstead Methodist Church. This partnership is rooted in a shared commitment to worship, witness, and service within our communities.



The Banstead 5 exists to foster mutual support, shared prayer, and the pooling of resources among our churches. Clergy and lay representatives meet regularly to plan joint services, outreach initiatives, and training opportunities. Recently, these have included a shared Lent Course, the annual Good Friday Walk of Witness, the Remembrance Sunday Parade in Banstead, an Advent Service, and a Prison Week series of talks and services.

Being part of the Banstead 5 encourages us to remain outward-looking and engaged with the broader mission of the Church. We deeply value the relationships we have built across this group and look forward with enthusiasm to future opportunities for collaboration.

## Epsom Deanery

### A final word from our Area Dean – Revd Rosemary Donovan

Epsom Deanery is fantastic, but I'm biased!

Seriously there is good fellowship and cooperation across our 13 benefices, demonstrated by increased engagement at both the Incumbents and full Chapter meetings, as well as Synod. We are committed to Loving, Listening, and Learning from each other.

We try to ensure that the purpose of each meeting is clear and identify current relevant topics that are important for everyone. We have recently gone through the second cycle of the Parish Needs Process, a means to ensure each benefice develops a comprehensive Church Development Plan. This has enabled us to identify synergies between us and opportunities for even more collaborative working, most notably about discipleship, including Growing Leaders which we have now run twice as a Deanery, children and families work for which there is an informal network, as well as community engagement initiatives.



Mentoring is offered to new clergy, and we operate several clusters for deeper fellowship and mutual support. There is an annual Incumbents retreat for 24 hours, as well as a Quiet Day for all the Chapter. We are concerned for one another's wellbeing, believing that you cannot nurture others unless you nurture yourself. We would be delighted to welcome a new colleague and look forward to sharing ministry with you.



## **The Parish of Nork with Burgh Heath**

**St Paul's Church Nork  
Warren Road  
Banstead  
SM7 1LG**

**St Mary's Church Burgh Heath  
Brighton Road  
Burgh Heath  
KT20 6AW**

**[www.norkwithburghheath.com](http://www.norkwithburghheath.com)**

***Registered Charity No 1180563***

***August 2025***