



# HUB LEADER

## Team Vicar leading the Parish of Wigan North West

We seek an ordained **relational leader** who can:

- **draw alongside** parishioners, connect with them, and lead them into a hopeful future in Christ.
- **build on a foundation of emerging unity** in a diverse parish.
- encourage the promising green shoots of **deepening discipleship** and **community mission**.

**We invite you to consider joining the Church Wigan team as the senior leader of Wigan North West, a large parish hub of three churches serving the diverse communities of Pemberton, Norley Hall, Kitt Green, Marsh Green and Orrell. These range from town centre and urban estate to semi-rural village.**

The parish is emerging from a period of change which included shifting leadership and the closure of a building. A foundation of growing relationship and unity between the churches has been established and a release of creative missional energy has led to some beautiful outreach activities, from feeding the hungry to breaking bread in a local library and pioneering estates chaplaincy. For sure, there is some way to go to secure a joyful confidence among all the membership – but no one can deny the distinct scent of hope that Jesus is on the move here.

Therefore the parish needs someone who, at this critical moment of development, is humble yet secure in their relationship with God, who can build on the nascent unity to encourage faith, fellowship and a renewed sense of mission to the community. The new leader will also deepen trust and confidence among those who are unsure, helping them to move forward and inhabit once again the joy of their identity as disciples of Christ.

## Do you love to...?

**help people discover who they are in Christ**

**be part of a real and supportive team**

**see people grow in fellowship and sense of belonging**

**recognise and develop the gifts in others**

**witness the gospel break out in unexpected places**

Church   
**WIGAN**



**I came to Wigan because I wanted to serve. This is a place that still believes the church has a future.**

*Chris*

# ROLE PRIORITIES

**Being Hub Leader is a special opportunity to serve and lead on a large canvas.**

You will be a senior team vicar licensed to the Church Wigan team leading the mission in the Parish of Wigan North West. Around you will be a gifted group of leaders including a team vicar colleague based in the parish, two retired priests, two readers, local missional leaders and dedicated churchwardens. You will also be supported by the wider Church Wigan team, including the Next Generation ministry, operational support services and team rector.

Above all, you will be a people-person who invests in relationships and whose leadership is exercised primarily by drawing alongside people and empowering them to discern and join in with the mission that God is doing.

Your priorities will be:

- Build on the foundations to encourage the congregations of the parish to grow together in faith and step out in mission, reaching out to new and younger people currently beyond the walls of the church.
- Reinforce trust and relationship among existing church members, nurturing an environment in which they feel safe to renew a joyful confidence in their faith and deepen the rhythms of discipleship in their lives.
- Grow team at every level, such as the Hub Leadership Team, local church leadership teams, pastoral care team, and wardens/ops group, empowering them to discern the leading of the Spirit and join in. Wisely use the many tools now available thanks to the recent national investment in Liverpool Diocese.
- Be the 'chief communications officer' in the parish, providing a sense of direction by lifting people's gaze onto Jesus and what he is doing, reassuring them of their value in the Lord, understanding shared priorities, and involving them in the journey.
- Oversee the exciting redevelopment of the buildings of St John's and St Barnabas as they are adapted to be sustainable centres of mission.

## TEAM

## WORKS



**I've seen a deepening of faith and call to service among people. There are new sparks of leadership.**

Wendy

# ROLE RESPONSIBILITIES

The role will be fulfilled on **three levels**:

## 1 Parish (hub)

- As chair of the Hub Leadership Team, provide prophetic leadership and strategy, leading on discernment and delivery of the mission plan and budget in line with Church Wigan's shared vision and purpose ('joyful obedience' and 'growing disciples').
- Working with clergy colleagues, oversee the parish worship plan, ensuring nourishing and appropriate public worship for all local communities (inherited and fresh), and encourage a culture of prayer, both public and private.
- Oversee effective parish communications and links with Church Wigan.
- Share in mentoring key local leaders (local missional leaders, wardens, chaplains) and, with parish colleagues, reinforce and envision local church leadership.
- Chair the PCC and work with the wardens team to consolidate clear organisational processes that bring confidence among parishioners.

## 2 Local

- Exercise a priestly ministry: working alongside parish ministry colleagues, lead public worship, offer inspirational preaching and teaching, pastoral care, and preside at occasional offices.
- Be rooted: although the whole parish is your community and you will be active in all parts of it, you will provide focal ministry at one church, being the primary pastoral contact and minister of word and sacrament and encouraging the lay leadership team to fully live out its mission and ministry.

**Set an example  
for the believers  
in speech,  
in conduct,  
in love,  
in faith  
and in purity.**

**1 Timothy 4.12**



**I feel welcome in all three churches in the hub and love how each offers a different experience of worshipping God which enriches my faith.**

*Ann*

# ROLE RESPONSIBILITIES (CONT'D)

## 3 Church Wigan (deanery)

- Take your place in the Wigan clergy/ministry team, sharing in the mission to the whole of Wigan, listening to God together, praying for each other and enjoying warm fellowship.
- As Hub Leader of Wigan North West, be a member of the Joint Council of Wigan, sharing in the executive leadership and governance of Church Wigan.
- Once established in the role, explore the possibility of offering ministry in Wigan that energises you and will enrich others.

## What do we mean by 'Hub'?

Hubs are the way we resource and grow mission in Church Wigan. At the heart of all our parishes is a hub, a nexus where people come together who previously would never have met. The hub transcends former parish boundaries, so that those who share a similar heart and vision for mission can work together to offer new ministry in a permission-giving, safe and accountable environment. Some of most important ministries in Wigan have only been possible because the cooperation, mutual encouragement and shared resourcing enabled by hub.

Each parish hub has a hub leader, supported by their Hub Leadership Team (HLT). The key task of the HLT is to discern the parish mission plan which embodies the priorities we believe the Holy Spirit is giving us, and to work faithfully to fulfil the vision to make disciples of Jesus so that, through him, people and places are transformed in love.

There are currently six parish hubs (two parishes work together as one hub) in Church Wigan.

Freely you  
have  
received;  
freely give.

Matthew 10.8



I love being part of this church. It's my space,  
my time, I feel safe.

Elaine

# THE TYPE OF PERSON WE SEEK

You will be recognised as being:

- **Spirit-led.** Your leadership is defined by following Christ, with a deep commitment to discerning the leading of the Spirit with others to inform your strategic planning.
- **Relational.** You engage people with empathy, building trust through listening and presence, communicating clearly and doing the basic things well that establish confidence.
- **Enabling.** You are an encourager who loves to draw alongside people to release them into God's calling. You are gentle yet courageous in challenge but not domineering, understanding the necessity of people feeling ownership in what they do.
- **A great communicator.** You care about, and are skilled at, creating spaces where people can hear – God, each other and you.
- **Understanding of diversity.** You embody a generous orthodoxy, valuing the different traditions in the parish and a unity in diversity. You will also appreciate the different needs of the communities in the parish, from urban estate to semi-rural village.
- **Experienced.** You will come with some life experience, especially of the ups and downs that church life can bring eg. conflict, resource challenges, and anxiety about change. Your sense of humour, resilience and ability to remain calm and positive enables you to be a non-anxious presence even in the middle of a storm.
- **A team player.** You know the value of 'we.' Your default is to connect, build teams not walls, and do things together, deeply appreciating the importance of mutual accountability.

How good and pleasant it is when brothers and sisters live together in unity [...] For there God bestows his blessing.

Psalm 133



Slowly but surely the churches in the Hub are moving closer together and becoming more united. We've really started listening to each other.

Sheila

# ABOUT THE PARISH OF WIGAN NORTH WEST

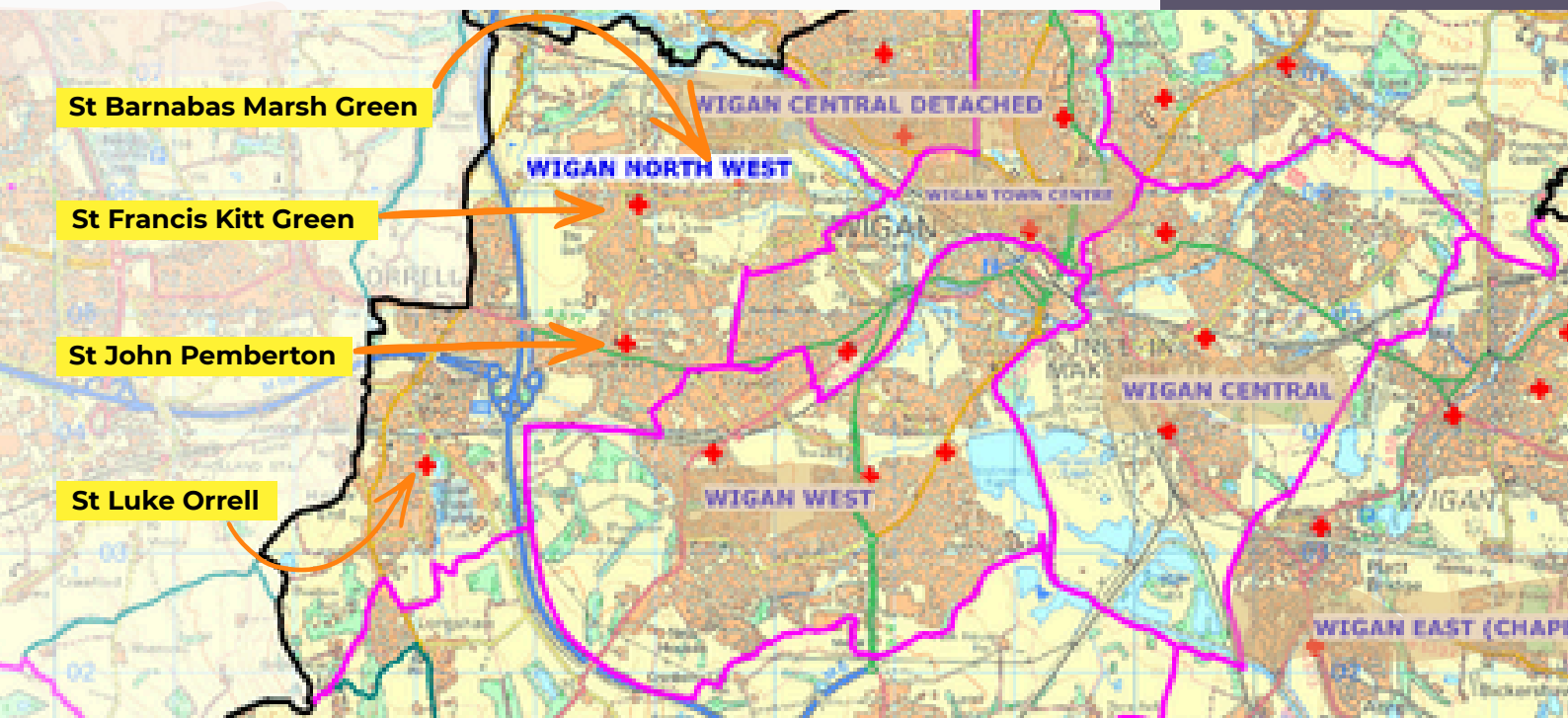
With a population of 26,807, the parish serves the communities of Pemberton, Kitt Green, Norley Hall and Marsh Green in the Northwest part of Wigan and the village of Orrell which lies three miles to the west of Wigan town centre. These neighbourhoods sit astride the M6 motorway at its junction with the M58, offering easy access to nearby cities like Liverpool and beauty spots such as the Lancashire coast and Lake District.

While the Church Urban Fund ranks the parish at around the tenth percentile of most deprived in England, it is a diverse place. Pemberton, with its long historical connection with coal mining, is one of the district centres of Wigan borough with a busy high street and nearby high school. Kitt Green and Marsh Green are residential areas, marked in places by significant deprivation yet strong sense of community, and also the site of one of Europe's largest food processing plants. Orrell has a very different village feel and is one of the most desirable places to live in the borough, with Orrell Water Park, two outstanding sixth form colleges and a growing selection of independent bars and restaurants.

**A place of  
diverse  
character**

**Strong sense  
of community**

**Great access**



**This is a place of three W's:  
welcome, warmth and worship.**

# MISSION & MINISTRY IN THE PARISH

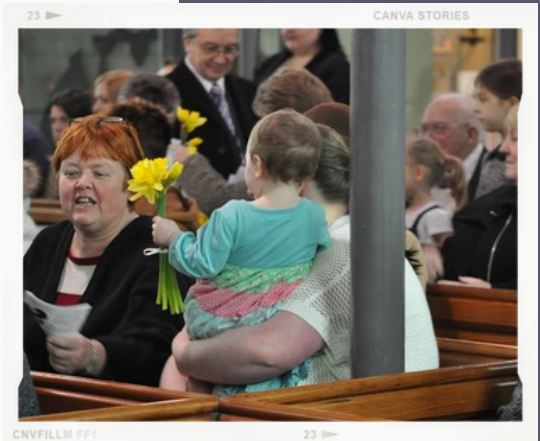
## ST JOHN THE DIVINE, PEMBERTON

St John's has a long and close association with the people of Pemberton. It is regarded by many as their spiritual home and is indeed the historic mother church of a number of congregations on the west side of Wigan. It has a devoted and supportive, if aging, congregation of about 60 who serve the community in many ways. It has ambitious plans to re-order the interior to enhance its ability to serve the community.

It has a strong sacramental tradition and rejoices in the rituals of Choral Holy Communion which is celebrated every Sunday. It also has a mid-week celebration once a month which is enjoyed by a small but regular congregation.

The church has a very close relationship with our school who worship in church every Thursday morning and join the congregation at Festivals eg. Mothering Sunday and Harvest Festival. Our school, along with other schools in the parish, hold their carol services and nativity plays in church and visit church to Experience Harvest and Experience Easter. The school also recreates baptisms and weddings as part of its curriculum. The church and school co-operate in the organising of a Christmas and Summer Fayre.

The church has recently increased its mission to the community by establishing Breakfast Tea & Toast, Craft Club and Monday Club. Also, the church provides a free meal on the last Saturday of every month for the community. Further missional progress is planned when the re-ordering of the church is completed. We also have a team of Churchyard Chaplains, who meet regularly in church on Saturdays, to minister to people visiting the graveyard and local shoppers.



**As a young person I like being part of a church family of people of different ages who all share a love of Jesus.**

*Cameron*

# MISSION & MINISTRY IN THE PARISH

## ST FRANCIS OF ASSISI, KITT GREEN

St Francis is a very warm and welcoming church with a committed fellowship who share a strong call to community ministry. The modern church building, with its comfortable chairs and inviting interior, reflects the congregation's more informal approach to worship which features lay involvement (readings, prayers, officiating), good preaching, regular sharing of 'God News Stories,' and a genuine dedication to reach out to newcomers. Average Sunday attendance is around 55 adults and young people.

As well as Sunday worship, there is Wednesday morning worship which gathers a congregation of 20 adults for a service of the word or communion.

There is a prayer group which is open to all and meets to intercede for the local community and church on a Thursday evening. Rounding off the week is an informal Friday evening service followed by chippy tea which draws in people who would otherwise not attend Sunday worship. This currently gathers an average of 16 people.

There is a thriving and active Mothers Union group which has 28 members. Moreover, a lay-led Mission Group meets to discern where God might be working locally and is particularly focused on outreach to children and young families. Given the relatively high rates of holiday poverty among children (around one in five children in the parish live in families experiencing deprivation, per CUF data), the Mission Group is currently exploring setting up a Messy Church in partnership with a local school to reach out and provide for families in need during school holidays.



CNVFILLM PF1

23



CNVFILLM PF1

23



CNVFILLM PF1

23



**St Francis is a welcoming church. They welcomed me with open arms.**

*Michelle*

# MISSION & MINISTRY IN THE PARISH

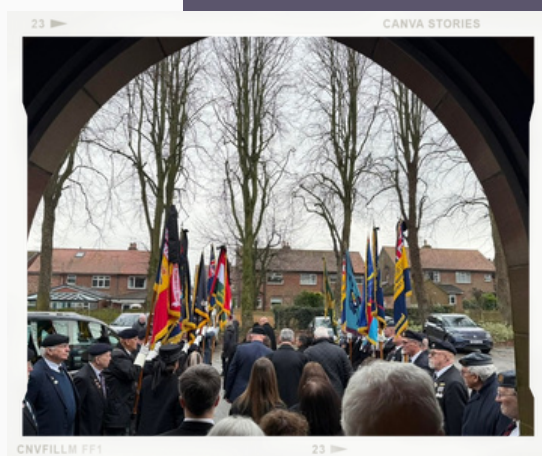
## ST LUKE, ORRELL

St Luke's sits at the heart of the village of Orrell opposite the local Orrell Water Park beauty spot, and has a faithful congregation of around 60 people. Its story began when the clergy of the mother church, St John's Pemberton, opened a day school in 1843 which also hosted a Sunday School and midweek worship for the people of Orrell. After becoming a missionary district of the Diocese of Liverpool in the early 1900s, the church was built and consecrated in 1927.

St Luke's still has a close connection with local schools with an excellent relationship with Newfold County Primary school and Holgate Primary School, which is the school out of which the church grew. These partnerships include hosting Christmas concerts in church and seasonal events at Easter, Harvest and Advent when children spend time in church learning about the Christian message. Our links with school are growing, opening up new opportunities. Moreover, there is outreach to the students of the nearby Winstanley College, which is recognised nationally as a top-achieving sixth form college.

The church has a choir, organist and choirmaster which enhances the Sunday services and a Junior Church which has attracted some new members to our services. Social justice activities include providing a weekly Warm Space, supporting local and international charities and caring for prisoners at HMP Hindley. An active Mothers Union leads on social justice activities like the recent 'Rise Up' campaign supporting those affected by domestic abuse.

The well appointed Parish Hall is a much-used community asset and a loyal team of volunteers keeps the extensive and pleasant graveyard and grounds in excellent condition.



**There's a thriving community all around the church and a real opportunity to reach out to them. A few small things is all we need to build connections and grow mission.**

*Rowena*

# MISSION & MINISTRY IN THE PARISH

## ST BARNABAS MARSH GREEN

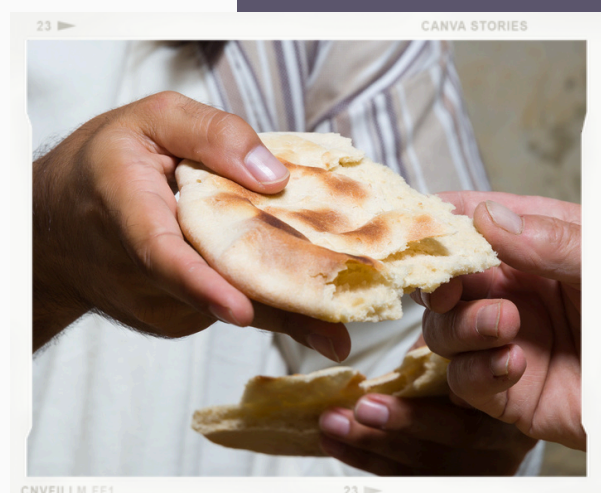
Following major damage to the building during lockdown, St Barnabas (known to most as StB's) was closed for public worship, with the congregation moving to other churches in the parish for worship. However the parish is now in dialogue with Wigan Council, service providers and the local community to explore how St B's - for years the centre of an otherwise deprived community - might become the catalyst for regeneration and new hope in Marsh Green.

## MARSH GREEN COMMUNITY CHAPLAINS

A mark of the authentic discipleship of members of StB's was how they responded to the difficult news of the closure of their church building: 'If our neighbours can't come to church, we will take church to our neighbours.' Thus in lockdown began their ministry of innovative community chaplaincy. The chaplains call it a 'ministry of smiles', regularly being present on the streets, connecting with people, signposting them to public services, and praying for them. They also regularly visit local businesses, schools and alternative education providers with a smile and blessing.

## MARSH GREEN LIBRARY OUTREACH

Connected to the community chaplaincy is the mission that is emerging in Marsh Green library. A church led craft group morphed into a reading group involving a diverse range of local people who now break bread together in a service of holy communion in the library. Moreover, a pop-up pantry (food club) based there provides food security and dignity to neighbours in need.



**As community chaplains, we have been enabled and encouraged to boldly step out and do something new and meaningful in our neighbourhood. This has been liberating, giving us ways to express our faith and help others find theirs.**

*Ann*

# CURRENT MISSION PLAN

The parishes of Church Wigan have begun a journey together named 'Joyful Future' where our mission is faithful to the leading of the Spirit and realistically reflects the talents and resources God has given us.

In October 2025 Wigan North West undertook a major exercise in prayerful discernment to identify the priorities we believe God is revealing and which provide the foundation for the mission plan for the next 1-2 years. There are four broad areas for development:

**BELONG** Continuing the work of building trust among our congregations and fostering a unity in mission.

**NURTURE FAITH** Helping people outside the church to discover Jesus and those inside get to know him more deeply.

**LIFESTYLE** Cultivating a rhythm of discipleship among all our people, forming them to live as followers of Christ in today's world.

**COMMISSION** Growing the next generation of leaders and teams which work together for God's kingdom.

Already a number of activities in each area have been identified which together will form the mission plan. Some of these will be implemented as a whole parish (the shared stewardship campaign is one example, another is investing in our teams and lay leaders) and some will be specifically local activities. Together, these will form a beautiful mosaic of mission that is spread fairly across the parish and yet leaves room to respond to any new ways in which the Lord might lead us.

The parish will be able to draw on support enabled by the significant Diocesan Investment Programme. This will include a 'Cultivate Companion' to help embed the mission plan, a buildings team with expertise in generating new income from existing assets, and tools for discipleship and leadership development.

I pray also for those who will believe in me through their message, that all of them may be one, Father, just as you are in me and I am in you.

John 17.20-21



The Church of England... professes the faith uniquely revealed in the holy scriptures and set forth in the catholic creeds, which faith the church is called upon to proclaim afresh in each generation.

Declaration of Assent & Oaths



# THE WIDER CONTEXT: CHURCH WIGAN

## OUR JOURNEY

The people of Wigan Deanery are now in the twelfth year of a journey of transformation. At the heart of it has been the forging of stronger relationships and a renewed commitment to help people grow as disciples of Jesus. As we grow both as individuals and communities into the ways of Jesus, then our neighbourhoods are impacted; the kingdom comes, in Wigan as in heaven.

To do this, we have worked hard over many years to transcend the (often parochial) barriers between us. Together, we have been able to connect the amazing talent and resources God has given us to build for his kingdom in new ways, such as running a network of 10 pantries and a CAP debt centre. These activities alone saved the most marginalised households £750k last year and introduced many to welcoming spaces in which they have been fed socially and spiritually as well as physically.

Such community mission would have been inconceivable without the unity God has built among us and which is now structurally embodied in Church Wigan. However, unity is just one side of the coin. Just as important is our celebration of diversity - or, more accurately, our 'unity in diversity.'

All our worshipping communities are small or medium-sized with often very different cultures and social contexts. We don't want to conform them to a particular style or churchmanship, but for them to be more faithful and fruitful in their own historic and evolving identity. Thus, the task of parish 'hub' leadership is to empower local church teams to engage with the mission the Spirit has given them through close support and shared resources and tools. That's why we say, 'act locally, support centrally.'

The journey has been hard, and we've made mistakes along the way. Yet certainly we are in a more resilient and hopeful place than if we had never dared to set out.



Church  
**WIGAN**



**I love the way we take church out beyond its walls. There are people here who have really encouraged me to see God at work in our community.**

# THE WIDER CONTEXT: CHURCH WIGAN

## SOME FACTS & FIGURES ABOUT CHURCH WIGAN

- Serves nearly 200,000 people in Wigan and its surrounding towns and villages.
- Has 2,600 members in a 'mixed ecology' of around 50 established parish churches and new worship communities.
- These are gathered in seven large 'hub' parishes served by a single team ministry.
- Our Support Services team provide operational assistance to parishes in key areas eg. buildings maintenance, finance/HR, comms, funeral organisation, compliance and safeguarding.
- The Next Gen team leads on mission to young people aged 0-11, 11-18 and 18-24+ and supports parishes develop outreach.
- Is an early, major beneficiary of Diocesan Investment Programme support for parishes to develop their missional and financial health.
- 'Do team' at every level - leadership is always plural. This includes clergy/ministry team, of which you will be a key member, meeting regularly to discern mission, pray together and enjoy friendship and personal support.

In our diversity we hold to one shared vision and mission:

### VISION

Through Jesus transformed people, transformed places

### MISSION

We join in with what God is doing to grow disciples of Jesus among all the people of Wigan Deanery

Check out the website for more info:

[churchwigan.org](http://churchwigan.org)



We've gone from a 'we only do this' church to a 'let's give it a try' church. I love this!

Peter

# OTHER INFORMATION

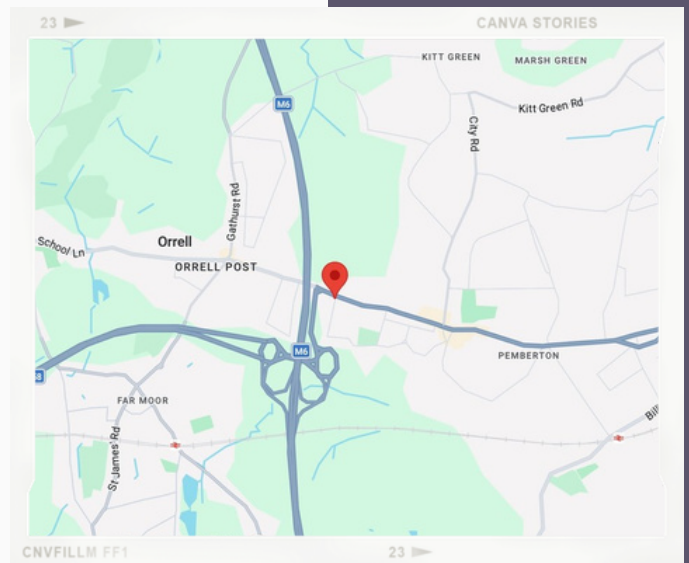
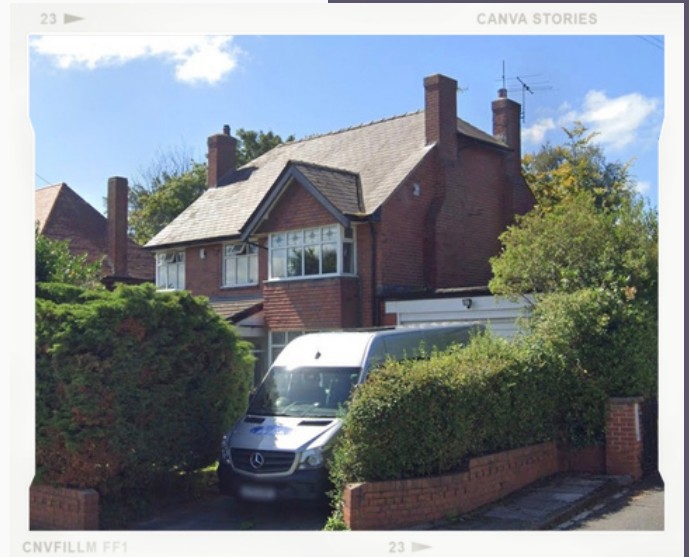
## Where you will live

**St John's Vicarage** is a 4-bedroom detached house which enjoys a central location in the parish, situated on the very pleasant Shelley Drive. The shops of the high street in Pemberton are less than half a mile away, while the restaurants and cafes of Orrell are not much further than that in the other direction.

The vicarage couldn't be better located for access to motorways leading north, south and west, and Pemberton train station enables you to quickly reach the heart of Liverpool and Manchester in 45 minutes, Local beauty spots are within a few minutes drive.

There are a number of schools in the parish, including highly rated primary schools, a high school and two outstanding sixth form colleges.

Wigan itself is undergoing a multimillion pound regeneration of its town centre and is becoming known as a great place to live. We highly recommend it!



## Want to find out more? Let's have a chat

**Neil Cook - Team Rector**  
07733 296850 | [neil.cook@churchwigan.org](mailto:neil.cook@churchwigan.org)

**Simon Fisher - Archdeacon of St Helens & Warrington, Liverpool Diocese**  
0151 705 2159 | [simon.fisher@liverpool.anglican.org](mailto:simon.fisher@liverpool.anglican.org)

Church   
**WIGAN**

