

# RECTOR WITH OVERSIGHT RESPONSIBILITY

## THE BENEFICE OF LOSTWITHIEL PARISHES

---

## PROFILE & STATEMENT OF NEEDS

2025

# CONTENTS

---

**OUR BISHOP** 3

---

**OUR ARCHDEACON** 5

---

**OUR RURAL DEAN** 7

---

**OUR VISION** 8

---

**OUR SERVICES** 9

---

**OUR CHURCHES** 10

---

**THE AREA** 16

Map

Local Area Information

Towns & Villages

Schools

---

**THE PARSONAGE** 21

---

**IMPORTANT INFORMATION** 22

Safeguarding Statement

Accompanied Ministry Development (AMD)  
& Clergy Wellbeing



# OUR BISHOP

**In the Diocese of Truro we are deeply committed to following what we call The Saints' Way. We see ourselves as part of a story of the grace of God, made manifest in Cornwall, which stretches back many hundreds of years, possibly to the very earliest days of the christian faith. It's a story that calls us on into the future too, in loving mission, ministry and service.**

As we follow The Saints' Way we will be deeply committed to Christ and to all that he calls us to be and to do; and to Cornwall, this very special place with its own particular culture, history and identity.

We can only follow that way faithfully if we see it as our corporate calling, as the body of Christ, mutually accountable to one another. So we encourage ministers of the gospel to come and join us here who are committed to setting the whole people of God free in their God-given calling, to make Christ known here in Cornwall, today.

So we seek clergy who are faithful in prayer and worship, and who are missional in imagination and heart; those with a pastoral passion for people and communities and their flourishing. We are looking for joyful and hopeful disciples and ambassadors of Christ: people who share the Gospel with





energy and commitment, in word and in deed - and above all with love - and who enable the communities they lead to do the same.

We are looking, therefore, for people who, on this journey, are curious and realistic, creative and determined and are deeply hopeful of a better future. But we also want to work with those who recognise that they are not perfect and will sometimes fail, who learn from their mistakes and will take the initiative in seeking reconciliation with others.

We are convinced that all ministers need the support and companionship of others and we help priests in a number of ways so that they never work alone. In this spirit, we encourage those who can forge good relations with others, and actively collaborate with them for the sake of the Kingdom, to join us here in the Diocese of Truro.

I pray that as you consider this opportunity you might discern God's calling and purpose for you in this next chapter of your own discipleship, mission, ministry and service.

A handwritten signature in black ink, reading "David Williams". The signature is written in a cursive, flowing style. The word "David" is written in a larger, more prominent script, and "Williams" is written in a slightly smaller, more compact script. The signature is positioned to the left of the printed name.

**THE RT REVD DAVID WILLIAMS**  
**BISHOP OF TRURO**

# OUR ARCHDEACON

**The Benefice of Lostwithiel Parishes, nestled between Bodmin and the beautiful coastland around Fowey, is a cluster of six small rural parishes (and seven churches) each with something special to offer.**

In the deanery of Bodmin and Trigg Minor, the Lostwithiel Benefice can sometimes feel overlooked; this profile identifies the challenge of building closer relationships between these parishes and the wider deanery. My prayer is for a Rector who can help the churches of this benefice find their place within the deanery plan and help to shape it further in order that the wonderful initiatives we see in many parts of the deanery can be shared and developed, without fear or favour.

The successful candidate will need to have a deep and vibrant faith and understand themselves to be a leader of mission, without bowing to the pressure to be and do everything themselves; they will need to invest in oversight ministry and seek to identify and equip lay ministers with whom to share the work.

They will have a good understanding of rural ministry, gifts and experience in developing links with schools and community partners. They will need to be wise and discerning, able to make difficult decisions when faced with myriad



good things in which to invest their time; they will need a blend of kindness and strength to keep on course and love the people entrusted to their care, even when the going gets tough.

That the churches are keen to connect with their wider communities is positive and encouraging; they have shown themselves to be innovative in many ways. They will need help to deepen discipleship and understand the distinctive nature of Christian service as an expression God's missionary activity, fuelled by love. Going forwards there will be the need to explore how church life itself might be shaped by this engagement – how will growing churches welcome and adapt to those for whom current models are alien.

I look forward to welcoming to this benefice a new Rector with Oversight Responsibility who will help to build upon the creative and community focused work that is already happening, and enable the churches to grow in discipleship and service.

Please explore further and get in touch if you would find it helpful to have a conversation about this great opportunity.



**THE VEN KELLY BETTERIDGE**  
**ARCHDEACON OF BODMIN**

# OUR RURAL DEAN

**The Lostwithiel Benefice is one of six benefices or clusters in the Deanery of Trigg Minor and Bodmin. The deanery is a mix of urban and rural areas, the largest conurbations being the towns of Bodmin and Camelford.**

The Benefice of Lostwithiel Parishes reflects the character of the deanery, embracing both the town of Lostwithiel with the parish church of St Bartholemew's but also small rural churches such as, St Mary's Bradoc, which has a thriving connection with its local Church of England school, and the lovely parish church on the Boconnoc estate, much loved for weddings.

If appointed to this exciting post you will be supported by an able benefice administrator and will work closely with, and may well become a part of, the Deanery Implementation Team (DIT) which is now in its third year of the working out of our Deanery Plan. Under the diocesan "On the Way" process each deanery in the diocese worked out for itself a plan to become more fruitful and sustainable in the years ahead. As part of our plan we committed to maintaining a stipendiary priest in each benefice, using the Low Income Communities Fund and Diocesan Mission Funding to support this where necessary: this reflects our value of and support for stipendiary ministry. The DIT has substantial funds

at its disposal for the furtherance of mission in the deanery, particularly for projects among children, young people and families and also among the elderly, vulnerable, and disadvantaged in our communities. All our incumbents are encouraged to be creative in their missional projects and to seek funding from the DIT as appropriate to turn these ideas into reality.

This is the last vacant stipendiary post in the deanery so you will be joining a thriving, committed, and enthusiastic chapter of men and women which meets regularly to pray and study together and to give each other encouragement and support, always seeking ways in which we can work together collaboratively to spread the Good News across our deanery.

**REVD JEFFREY TERRY**  
**RURAL DEAN OF TRIGG MINOR & BODMIN**

**Read our deanery plan: <https://tinyurl.com/triggminorbodmin>**

# OUR VISION

**Growing the Church to connect people with Jesus and give them hope.**

We seek to achieve this by:

- Serving others,
- Working with schools,
- Providing opportunities to develop our own discipleship,
- Sharing faith stories.

We do this by seeking to be faithful to who God is and who he calls us to be.

## **Our challenges**

We have recognised that in achieving our vision we will require some help with the following:

- How we work closer together as a benefice and challenge the natural tendency to revert to being parochial.
- How we seek to be counter cultural but also be changed by those we encounter when sharing the love of God.
- How we enable laity and support them in their various roles making use of the skills and experiences we have here.

## **Challenges for our new Minister**

- We recognise that six PCCs are a challenge but we are open to exploring different structures to ease this burden.
- There are differences between the parishes, although we

see this as an opportunity to ensure diversity and to learn from one another.

- Negotiating rural lanes, cattle, tractors and reversing!



# OUR SERVICES

Collective worship every day at Bradoc School. Collective worship every day is led by one of the churchwardens.

Additional support – the benefice has a part-time administrator

Catherine, who works three mornings a week. Catherine, is a great asset to the benefice. Within her role she keeps all parishes up to date weekly with the benefice newsletter, co-ordinates the rota meeting and organises clergy cover.

Furthermore, Catherine is the first point of contact for occasional offices, dealing with wedding, funeral, and baptism bookings. Catherine disseminates diocesan correspondence to parishes, collects fees and pays parishes

their allotted monies owed. As a benefice, we are committed to funding this role in order to support our clergy.

There is an Associate Priest within the benefice and a team of Readers and Local Worship Leaders. Some clergy from outside of the benefice have provided cover during the transition.

CHURCH	SUNDAY 1	SUNDAY 2	SUNDAY 3	SUNDAY 4	SUNDAY 5
Boconnoc Church	Eucharist	Matins BCP (lay-led)	Matins BCP (lay-led)	Outstanding (March 2018)	Joint Benefice Service
St Bartholomew, Lostwithiel	Family Eucharist	Eucharist	Morning Praise (lay-led)	Eucharist	Joint Benefice Service
St Brevita, Lanlivery	Morning Prayer	Eucharist	Morning Prayer	Eucharist	Joint Benefice Service
St Mary, Bradoc	Lay-led BCP Evensong	Eucharist	Lay-led BCP Evensong	Eucharist	Joint Benefice Service
St Veep	Holy Communion		Family Eucharist		Joint Benefice Service
St Winnow with St Nectan's Chapel	Eucharist		Family Eucharist	Evensong (in St Nectan's - May to September)	Joint Benefice Service

# OUR CHURCHES

## BOCONNOC CHURCH

**Boconnoc Church is a parish church set within the private estate of Boconnoc with its 17th century manor house and landscape of great tranquillity.**

The church uses the BCP and the King James Bible and has a two manual organ, powerful for the size of the church. Its music is much appreciated.

A matins service is held three times a month, (taken alternately by two worship leaders) with a sung Eucharist service on the third Sunday. There are weekly Evensongs during Advent and Lent. If there is a fifth Sunday in the month, churches in the

benefice take turns to host a United Service.

House and church work closely together, with the many weddings which bring valuable income and the many other events such as an annual steam fair, equine activities and the Boconnoc Music Award, in conjunction with The Royal College of Music. Attendance at these events, increases our congregation and gives opportunity for ministry.

Visitors are always welcomed warmly, often young couples and their families attending to hear their banns being read

and couples who were married at Boconnoc returning to worship from time to time.

The church's access to this estate is much appreciated - the beautiful approach via an avenue of mature beech and hydrangea, the lake, the medieval deer park, calms and uplifts the spirit. The church also appreciates the use of The Soane Room and Stable Yard for some church functions.

This is a historic and beautiful church with a loyal and loving congregation.



↑ Boconnoc House and church



↑ Boconnoc Church altar



# OUR CHURCHES

## ST BARTHOLOMEW CHURCH, LOSTWITHIEL

**St Bartholomew's Church is a 12th century church situated in the centre of the town of Lostwithiel. It has tremendous historical importance with the original Norman font and beautiful stained glass windows.**

Worship at St Bartholomew's is traditional but we also have a variety of different services such as an annual pet's service, an outdoor nativity when hundreds of local people and some from other parishes attend each year, civic services, and a monthly family service which has included visits by Hedgehog Rescue, the Owls Sanctuary, a gospel

choir and our rescue services. Our Associate Priest together with a group of volunteers runs a monthly Messy Church, Open the Book, Experience Easter and Experience Harvest as well as services for schools and a Christmas tree festival. We have an active group of bell ringers and use the church grounds to provide bird and bug boxes and a sensory garden.

The church has very strong connections with the local community providing a nightly Foodshare when food is collected from the local Co-op. This is run in connection with our Community Larder which

is open every day and enables us to help needy families with a food box before each holiday, in conjunction with the local schools. There is a weekly community café run in the Church Rooms by our Associate Priest and a band of volunteers. Money raised from this supports community needs as well as enabling us to take the people who attend on trips.

We need our new Rector to be willing to work with the team here to help us to reach out to those who do not yet attend services as well as nurturing those who do.



# OUR CHURCHES

## ST MARY BRADOC PARISH CHURCH

**The parish of St Mary Bradoc is the most sparsely populated and one of the four least populated rural parishes in Cornwall. It is in the top 15% of deprived parishes.**

It has an active beautiful Grade 1 early medieval church set high on a hill. It has close links with its remote primary school and the children consider the church and school as one safe place.

It has close ecumenical links with Cannon Methodist Chapel and PTA. Together we have our own parish team who worship with the school daily with collective worship and weekly with Open the Book and Messy Church.

We worship with 137 different

children each week, through collective, conventional and pioneer ministry. Our twice weekly Messy Church clubs include after and in school worship at school and church. These include: Kidz Klub; Film club; Piano; Creation Care; science; Junior Ringers (hand chimes and bells, Mini ring, virtual ringers and tower bells).

We have a weekly community hub where we provide food and chat.

We have a rolling targeted growth plan which has significantly grown an all-age congregation over the last nine years, a PCC which represents all age groups including our children. PCC members include school

staff and are governors at the school.

With a Gold Eco Church award, St Mary's is a carbon neutral church with seating capacity for 150 inside and 130 outside, alternating weekly Sunday communion/evensong (lay).

We have all the amenities that people today expect in any public building, water, 3 phase electricity, WiFi, HiFi, Projection, kitchen, toilets, heating, refectory/meeting area, digital visitor information.

Our monthly newsletter and more Information about the church is available on [www.bradoc-church.co.uk](http://www.bradoc-church.co.uk)



↑ Sunday ringing junior bellringers



↑ Outdoor service at Bradoc



↑ Piano time at Bradoc



# OUR CHURCHES

## ST BREVITA, LANLIVERY

**Lanlivery church, is a Grade 1 listed building which has undergone extensive renovation in recent years to provide a community asset alongside the worshipping space.**

An extension to our churchyard was opened in 2010 as the 100 year old part was full. This should be ample space for well over 100 years.

Sunday Services are held every week and regularly attract a congregation of about 20 people. Twice a month this is Holy Communion (Common Worship in Modern Language). On the first and third Sundays of the month there is Morning Prayer, led by the two churchwardens who are also Lay Worship Leaders. Refreshments

are served after services. Evening services are held at the Patronal Feast Sunday, Harvest and the Service of Nine Lessons and Carols. The churchwardens meet for evening prayer on Wednesday; this keeps the prayer life of the church alive and also is an opportunity for them to share news etc.

Sadly, we have no young people attending and we would like to improve the provision, without jeopardising the attendance of our older congregation. There is a Benefice team of

pastoral ministers and the churchwardens are also worship leaders. Our aging team of bellringers has been succeeded by younger members who are keen.

The community is strong and there are various events held throughout the year which involve the church in the community. Social and fundraising events are held regularly by the various village organisations and church members are actively involved in different committees.



↑ Harvest supper at Lanlivery



↑ Weddings and bellringers at St Brevita

# OUR CHURCHES

## ST VEEP

**St Veep Parish is a deeply rural community covering 20 square miles with a resident population of approximately 300. The church itself is about two miles outside the main community of Lerryn, while the farming community forms the backbone of historic and current support for the church.**

**Mission:** St Veep aims to maintain and grow the strong sense of community within the parish, and provide practical and spiritual activities to support the wellbeing of residents of all ages.

**St Veep Church Services:** Until the current inter-regnum period there have been two priest-led traditional Eucharist services a month (one being the Book of Common Prayer service), augmented by services at Easter, Christmas, Epiphany, Feast Day in July, Harvest, Armistice, and for weddings, baptisms and funerals. The attendance at regular services is generally

about 12, which for a parish of this size is well above the national average.

**Infrastructure:** The church and its churchyard are maintained by a collection of local volunteers, including the supporters and bellringers, informal groups who work together to preserve the centuries' old heritage of St Veep. It's apparent that there is an immensely strong sense of ownership which the community at large is extremely keen to protect.

**Lerryn Church of England School:** There has traditionally

been a strong relationship between the village school and the church. Services mentioned above including those for Christingle and the Nativity, and the Harvest typically have brought the full community together with children, parents, wider families and parishioners enjoying the spirit of togetherness.

Annually, an Armistice Day ceremony is held at Lerryn War Memorial. This is coordinated by the Lerryn and Boconnoc Branch of the Royal British Legion and children from the school attend.



St Veep Church





# OUR CHURCHES

## ST WINNOW WITH ST NECTAN'S CHAPEL

**St Winnow is located along the River Fowey and is a place of refuge for many with its tranquil and spiritual location. It is open 24 hours per day and is well cared for.**

Its regular worshipping community care for each other and are friendly and welcoming. The church is much loved by its worshipping community, by the wider local community and by the very active Friends of St Winnow.  
[www.stwinnowchurch.org.uk](http://www.stwinnowchurch.org.uk).

Regular patterns of worship are:

- Eucharist on the first and third Sundays of the month (third Sunday is a recently introduced family service).
- Evensong on the fourth Sunday (held at St Nectan's during summer months).

The local Celtic Christian heritage

is reflected by some of the prayers and liturgy used.

Following the Sunday morning services refreshments are served and there is time for fellowship.

At Christmas, Easter and Harvest there are new initiatives working with local schools to explore the themes through stories and craft, as well as joint services at Christmas and Easter.

In December there is an outdoor Carol Service by the river, a popular community event attended by many who are not regular worshippers. On Easter Sunday there is a sunrise service at St Nectan's.

Other initiatives have been introduced to encourage involvement by the local community. Wildflower identification days and participation in the RSPB national bird count have gone well, as well as churchyard tidy ups.

The Friends of St Winnow raised funds to make bell ringing accessible to all, as well as organising a series of summer concerts which are well attended.

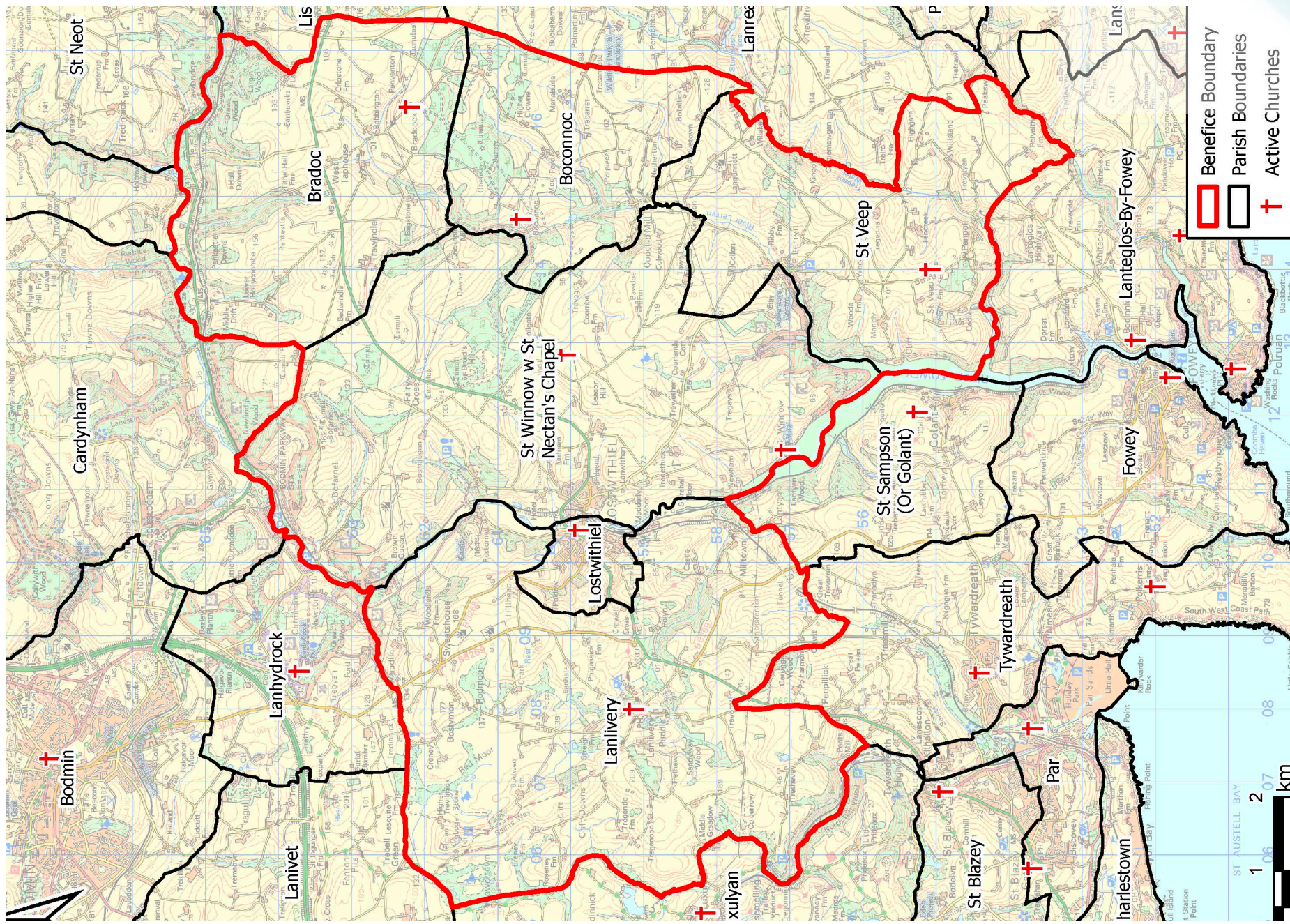
St Winnow's vision is to build on what we already do, work on

trying to do better, for example looking for new ideas to attract younger people, and to do this in partnership with a flexible leader exploring new ways to participate in the life of our community.





# MAP





# THE AREA

**The Benefice of the Lostwithiel Parishes consists of six parishes and seven churches situated in mid Cornwall, approximately 20 minutes by car from the busy towns of Bodmin, Liskeard and St Austell.**

This is a predominately rural area, with the sparsely populated parishes around the small ancient town of Lostwithiel, which is the main centre of population. The two other significant village populations are at Lerryn and Lanlivery Churchtown. The River Fowey and its tributaries run through each parish and help to make it a very attractive area. Both the north and south coasts of Cornwall can be reached within 45 minutes drive.

The combined population of the cluster is 4,502 (2021 census). The parish breakdown is Lostwithiel 1,772, St Winnow 1,507, Lanlivery 690, St Veep 301, Bradoc 117 and Boconnoc 115 with some 3,000 living in Lostwithiel Town which includes parts of St Winnow Parish.

The four low population parishes have significant rural deprivation placing them in the top 15% of deprived parishes in Cornwall and this is reflected in the numbers of pupil premium children in the six benefice primary schools. The benefice has similar issues of high housing costs, poor housing conditions, limited transport and low incomes as much of rural Cornwall.

The benefice is dissected by the A 390 which gives links to Truro and via the A38 Plymouth, and the A30, Cornwall's main spine road is easily accessible.

There are two mainline railway stations, Bodmin Parkway and Lostwithiel giving good connections to destinations to the East and West.

Transport Cornwall run limited bus services, National Express call in Lostwithiel and Lerryn has a community bus service.

The regional airports are at Newquay and Exeter.



# TOWNS & VILLAGES

## Lostwithiel

Lostwithiel is an ancient market and stannary town which straddles the river Fowey, and has the highest centre of population (3,000) with its population living in either Lostwithiel or St Winnow parishes. Here the Stannary Parliament used to meet, the Duchy of Cornwall still have their offices, and was the site of the largest defeat for the parliamentary forces in the Civil War. The town is overlooked by the Norman

Keep of Restormel Castle.

↓ Restormel Castle



It has all the amenities you would expect in a small town, including the doctors, a dentist and two primary schools and the station.

Cornwall is a Unitary authority but Lostwithiel still retains its Mayor and town council.

There are new housing estates planned for the town.

## Lerryn

Lerryn is a pretty village straddling the river Lerryn, with the population shared between St Winnow and St Veep. It is well appointed with shop and post office, a large modern village hall, a school, pub and meeting rooms.

## Lanlivery Churchtown

The tall church tower overlooks the village of Lanlivery with its pub and farm shops and two schools. The church was reordered some years ago and now forms the centre of much village activity.

## Across the benefice

The rest of the benefice consists of isolated homesteads with the occasional small clusters of houses and farms and isolated by active churches.

There are a number of large houses and estates of which Boconnoc is the most notable with its ancient deer park and home to four prime ministers. It is still a private home to one of our patrons and is a popular wedding venue with Boconnoc Church.

## Parish Councils

The Parish Councils of Lanlivery, St Winnow and St Veep serve the rural parishes. Lostwithiel Town Council serves Lostwithiel and Braddock and Boconnoc, who are two of the four lowest population parishes in Cornwall, have parish meetings.



# SCHOOLS

The Church has long played a central role in the life of many communities across Cornwall, and its involvement in schools within the benefice is no exception. Through a variety of initiatives, the Church seeks to nurture spiritual development, offer pastoral care, and provide a strong Christian presence in Church of England and non-secular schools with the local area. This work extends to primary and SEN schools and nurseries, where clergy, church wardens and congregations collaborate with educators to ensure that young people have access to both



religious education and spiritual support throughout their academic journey.

One of the key aspects of the Church's work in schools is the provision of regular worship and prayer services. These services form an essential part of school life, offering children an opportunity to pause, reflect, and flourish in their faith. Whether through weekly assemblies, special services during Christian festivals such as Christmas and Easter, academic studies or times of reflection, these gatherings create a space where children can feel part of a larger Christian community. They also provide an opportunity for the Church to teach Christian values, encouraging children to embody principles such as kindness, respect, and compassion in their daily lives.

The teaching of Christian values is another important aspect of the Church's work within schools. Religious Education (RE) plays a



vital role in the curriculum, helping children to explore the key tenets of the Christian faith, as well as the teachings of other world religions. By fostering an understanding of Christianity, the Church encourages students to engage with questions of meaning, purpose, and morality, equipping them with the tools they need to develop into responsible, ethical adults. Additionally, the Church often works alongside the school to integrate faith-based principles into wider subjects, supporting teachers in delivering lessons that promote empathy, responsibility, and a sense of justice.

Beyond the classroom, the Church's influence

in schools extends to community engagement. The Church helps facilitate joint projects such as charity fundraising, community service opportunities, and environmental initiatives, encouraging students to live out their faith by serving others. These activities create a bridge between the school and the wider community, fostering connections that promote a sense of belonging and shared responsibility. Schools and churches collaborate on special events such as harvest festivals, Christmas carol services, and Easter celebrations, which are open to the entire community, bringing people together in fellowship.

Lanlivery School (<https://www.lanliveryprimary.co.uk/>) is part of the Bridge Schools Trust. An important part of the community, the school uses the church for drama and events. The children are regularly hosted for pancakes on Shrove Tuesday, an opportunity for them to learn about the significance of the day.

As a group of schools within the benefice we look forward to welcoming a priest who wants to continue the multifaceted ministry that touches on worship, education, pastoral care, and community outreach. Someone who provides school communities with the spiritual tools they need to navigate life's challenges, while also offering them a sense of purpose rooted in Christian values. Through these efforts, the Church and its leadership plays an integral role in shaping the future of young people in Cornwall, helping them grow in faith, knowledge, and character.

SCHOOL	AGES	NUMBERS ON ROLL	OFSTED	SIAMS
St Winnow's C of E School	4-11	91	Good (July 2023)	Outstanding (March 2018)
Lanlivery Primary Academy	5-11	58	Good (May 2019)	N/A
Redmoor School*	5-18	71	Outstanding (March 2024)	N/A
Braddock C of E Primary School	3-11	114	Good (December 2022)	February 2022 (no longer graded)
Lostwithiel School	2-11	179	Good (March 2022)	N/A
Lerryn School	2-11	18	Good (October 2023)	October 2023 (no longer graded)

\* Redmoor is a special school (situated in Lanlivery parish) which has grown in the last few years. They are very keen to be involved with the church and have held their remembrance events at the war memorial and in church. They have provided fabulous decorations for the parish for Remembrance time.



# THE PARSONAGE

**3 Springfield Close  
Lostwithiel  
Cornwall  
PL22 0RW**

The four-bedroom, detached property is laid out over two levels with a separate single garage.

Ground Floor: Entrance hall, study, living room, dining room, kitchen, utility WC and central hallway.

First Floor: Four bedrooms, bathroom with separate WC and ensuite shower room.

Outside: Mature enclosed gardens with a storage shed/ workshop and parking.

The is EPC rated C/73.



# IMPORTANT INFORMATION

## SAFEGUARDING

**This parish recognises that the care and protection of children, young people and vulnerable adults involved in Church activities is the responsibility of the whole Church.**

Everyone who participates in the life of the Church has a role to play in promoting a Safer Church for all.

Our approach ensures that we promote **The Church of England Safeguarding Policy** statement based on five foundations and offers six overarching policy commitments:

- Promoting a Safer environment and culture,
- Safely recruiting and supporting all those with any responsibility related to

children, young people and vulnerable adults within the Church,

- Responding promptly to every safeguarding concern or allegation,
- Caring pastorally for victims/survivors of abuse and other affected persons,
- Caring pastorally for those who are the subject of concerns or allegations of abuse and other affected persons,
- Responding to those that may pose a present risk to others.

Our policies, procedures, and approach meet those requirements and guidance as issued by the Diocesan Safeguarding Team.



# ACCOMPANIED MINISTRY DEVELOPMENT (AMD) FOR MINISTERS WITH OVERSIGHT RESPONSIBILITY

The Programme is a series of six two-day residential colleges held over approximately 12 months, interspersed by Action Learning Sets/Reflective Practice Groups. Much of the input for the colleges will be provided by CPAS who have developed a programme for Oversight Ministers. The colleges are supported by a diocesan based Facilitator, Chaplains and Reflective Practice/Action Learning Group Facilitators. Cohorts will usually have 12 participants from across the diocese. The programme offers time to be together, to pray, study Scripture and learn from and with each other.

## College 1 – New Reality and Role

Beginning with the missional vocation of the Church we will explore the challenges and potential benefits of operating as an oversight minister and begin to unpack the changes that that requires.

## College 2 – Strategic Missional Leadership part 1 – adaptive leadership

How can oversight ministers lead strategically in the complexities of multiple communities, keeping mission and evangelism at the forefront of activity, whilst they and the leaders they lead are experiencing the unknowns of transition?

## College 3 - Strategic Missional Leadership part 2 – translocal leadership

Building on College 2, what key principles and practices do oversight ministers need to lead well with others across many different locations, animating healthy church culture and discerning God's direction?

## College 4 – Forming and leading an oversight team

How can oversight ministers lead well with others, leading a team leading teams, identifying roles, developing new leaders and ensuring good governance?



### College 5 – Identifying, equipping and managing leaders

How can oversight ministers best support, equip and release other leaders in a multi church setting, communicating well, giving feedback, developing supervision and line management skills and handling conflict creatively?

### College 6 – Self leadership and care

How can oversight ministers care for themselves in this new role, modelling Christ like leadership in the whole of their lives?

### Learning Outcomes

By the end of these colleges participants will be able to:

- Explain their role as Oversight Minister
- Identify the gifts and skills you contribute to the role
- Begun to practice new skills as an Oversight Minister
- Formulated an action plan to enable effective oversight ministry.
- Appreciate the scale of change required for effective oversight ministry for them, the benefices they serve and those they lead with.





# CLERGY WELLBEING

**This diocese recognises that most clergy roles are demanding. Providing support and caring for your wellbeing is important to us.**

There is a commitment at senior level and the organisation generally to:

- ensure that, at a strategic level, clergy wellbeing is explicitly referenced, and embedded in, all projects and work;
- it is adequately resourced and funded; and
- that we champion clergy wellbeing, challenge unsupportive behaviours and attitudes, and lead by example.

The diocese has a Clergy Wellbeing Group, with the aim of embedding the principles of the Covenant for Clergy Care and Wellbeing into the day-to-day policies and practices of the diocese. The group has agreed an action plan based on the themes and actions recommended in the booklet “How Clergy Thrive” by Liz Graveling and the useful resources guides that accompany it.

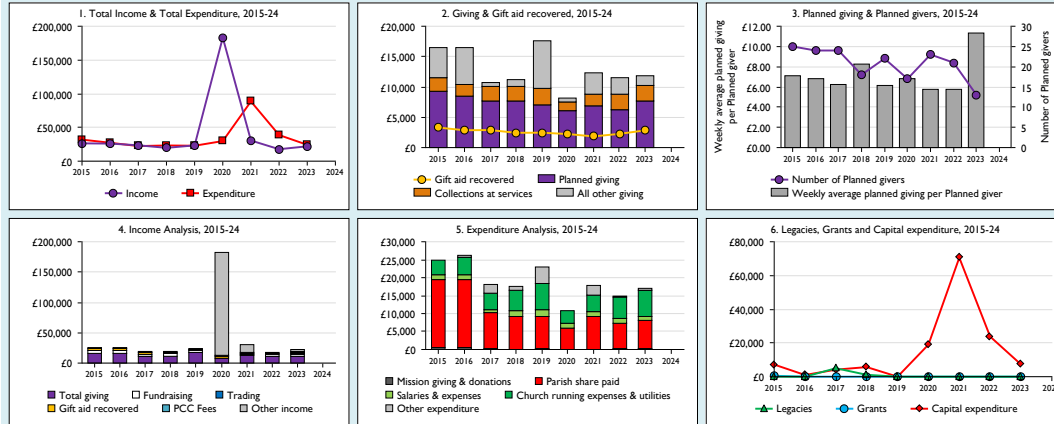
The diocese offers:

- occupational health and other confidential support services.
- a new pastoral supervision scheme.
- a page on the diocesan website dedicated to clergy wellbeing with resources and information.
- regular wellbeing articles, tips, and information in our clergy newsletter - Ministry Matters.
- workshops for PCCs to discuss clergy wellbeing boundaries/expectations, and a plan to run more.
- encouragement to clergy to report sick absence, offering to support them more effectively when they are ill including more frequent OH referrals.
- a revised MDR process to include (among other things) questions encouraging clergy to reflect on their physical, emotional and spiritual wellbeing.



# RETURN OF PARISH FINANCE

Finance Dashboard for the Parish of Lanlivery in the deanery of TRIGG MINOR & BODMIN



Weekly average planned giving per planned giver (2024)

Parish: nan

Diocese: 0.0

#### Notes & definitions

This dashboard contains figures as submitted by churches currently in the parish; gaps may be the result of missing returns.

Graph 2 shows a detailed breakdown of the **Total giving** figure in graph 4.

Graph 3: **Planned giving** = Tax efficient planned giving + Other planned giving. **Planned givers** = Tax efficient planned givers + Other planned givers.

Graph 4 shows income other than grants and legacies.

Graph 4: **Total giving** = Tax efficient planned giving + Other planned giving + Collections at services + All other giving, including special appeals.

Graph 4: **Other income** = Dividends, interest, income from property + Any other income.

Graph 5 shows expenditure other than capital expenditure.

Graph 5: **Other expenditure** = Fund-raising activities + Mission and evangelism costs + Cost of trading + Other expenses.

Graph 5: **Running expenses & utilities** also includes governance costs.

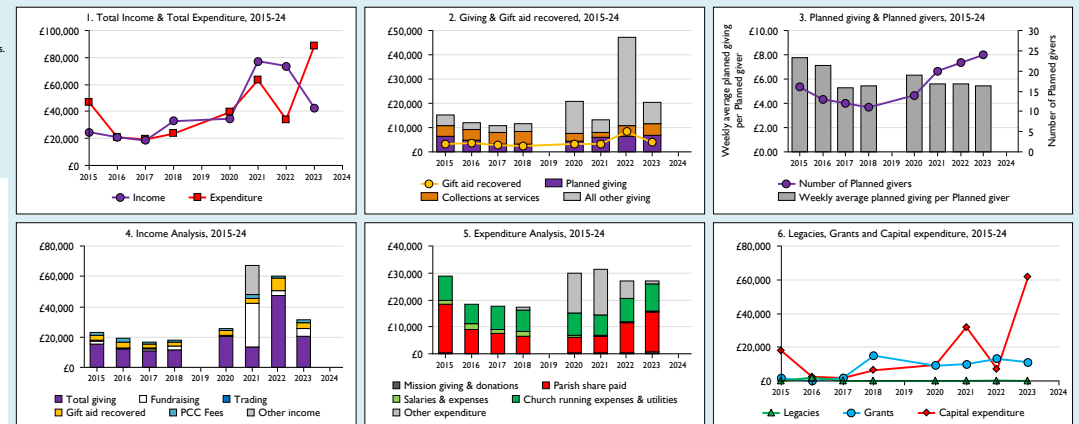
Graphs 1-6: Unrestricted and Restricted amounts have been combined.

For further definitions please see the guidance notes attached to the Return of Parish Finance.

Number of churches in parish (2024): 1

Parish code: 390194

Finance Dashboard for the Parish of Lostwithiel in the deanery of TRIGG MINOR & BODMIN



Weekly average planned giving per planned giver (2024)

Parish: nan

Diocese: 0.0

#### Notes & definitions

This dashboard contains figures as submitted by churches currently in the parish; gaps may be the result of missing returns.

Graph 2 shows a detailed breakdown of the **Total giving** figure in graph 4.

Graph 3: **Planned giving** = Tax efficient planned giving + Other planned giving. **Planned givers** = Tax efficient planned givers + Other planned givers.

Graph 4 shows income other than grants and legacies.

Graph 4: **Total giving** = Tax efficient planned giving + Other planned giving + Collections at services + All other giving, including special appeals.

Graph 4: **Other income** = Dividends, interest, income from property + Any other income.

Graph 5 shows expenditure other than capital expenditure.

Graph 5: **Other expenditure** = Fund-raising activities + Mission and evangelism costs + Cost of trading + Other expenses.

Graph 5: **Running expenses & utilities** also includes governance costs.

Graphs 1-6: Unrestricted and Restricted amounts have been combined.

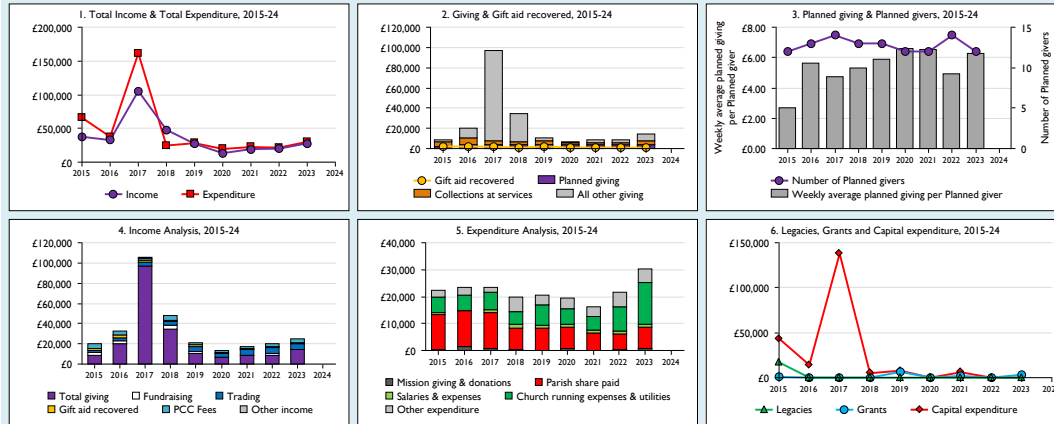
For further definitions please see the guidance notes attached to the Return of Parish Finance.

Number of churches in parish (2024): 1

Parish code: 390195

# RETURN OF PARISH FINANCE

## Finance Dashboard for the Parish of St Winnow w St Nectan's Chapel in the deanery of TRIGG MINOR & BODMIN



### Weekly average planned giving per planned giver (2024)

Parish: nan  
Diocese: 0.0

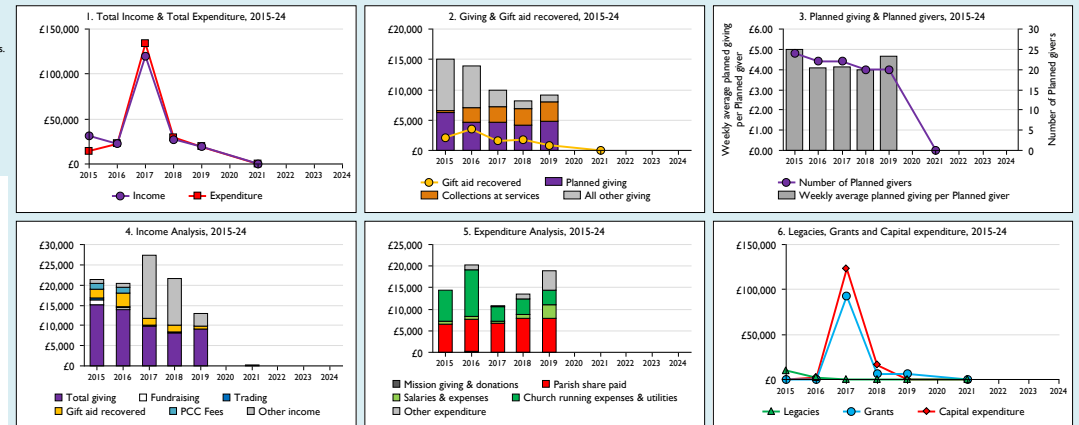
### Notes & definitions

This dashboard contains figures as submitted by churches currently in the parish; gaps may be the result of missing returns.  
Graph 2 shows a detailed breakdown of the **Total giving** figure in graph 4.  
Graph 3: **Planned giving** = Tax efficient planned giving + Other planned giving; **Planned givers** = Tax efficient planned givers + Other planned givers.  
Graph 4 shows income other than grants and legacies.  
Graph 4: **Total giving** = Tax efficient planned giving + Other planned giving + Collections at services + All other giving, including special appeals.  
Graph 4: **Other income** = Dividends, interest, income from property + Any other income.  
Graph 5 shows expenditure other than capital expenditure.  
Graph 5: **Other expenditure** = Fund-raising activities + Mission and evangelism costs + Cost of trading + Other expenses.  
Graph 5: **Running expenses & utilities** also includes governance costs.  
Graphs 1-6: Unrestricted and Restricted amounts have been combined.  
For further definitions please see the guidance notes attached to the Return of Parish Finance:

### Number of churches in parish (2024): 2

Parish code: 390198

## Finance Dashboard for the Parish of St Veep in the deanery of TRIGG MINOR & BODMIN



### Weekly average planned giving per planned giver (2024)

Parish: nan  
Diocese: 0.0

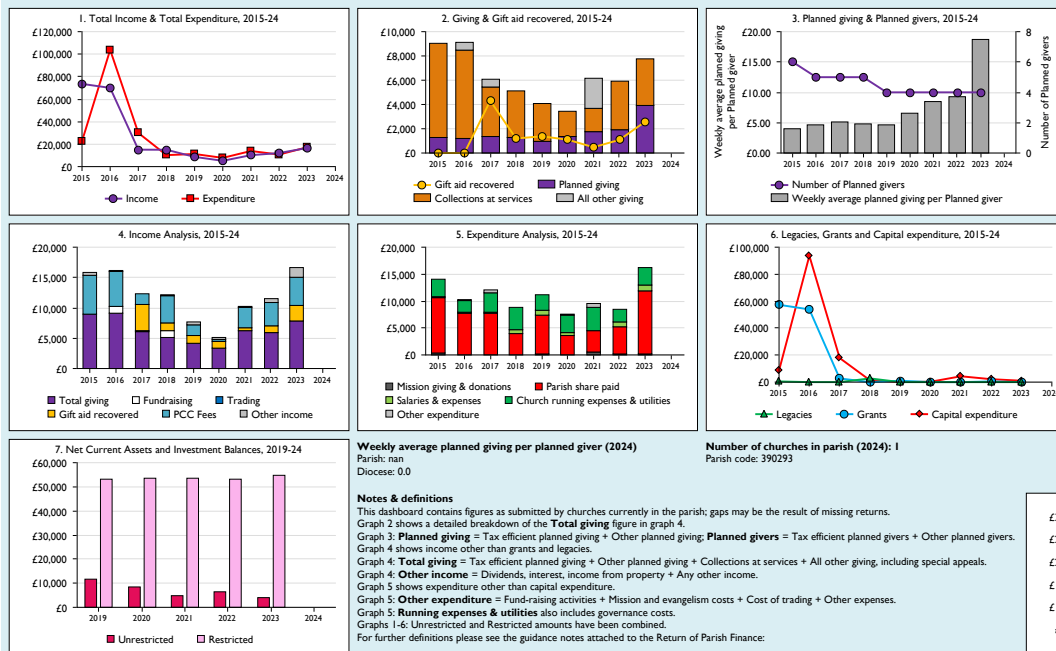
### Notes & definitions

This dashboard contains figures as submitted by churches currently in the parish; gaps may be the result of missing returns.  
Graph 2 shows a detailed breakdown of the **Total giving** figure in graph 4.  
Graph 3: **Planned giving** = Tax efficient planned giving + Other planned giving; **Planned givers** = Tax efficient planned givers + Other planned givers.  
Graph 4 shows income other than grants and legacies.  
Graph 4: **Total giving** = Tax efficient planned giving + Other planned giving + Collections at services + All other giving, including special appeals.  
Graph 4: **Other income** = Dividends, interest, income from property + Any other income.  
Graph 5 shows expenditure other than capital expenditure.  
Graph 5: **Other expenditure** = Fund-raising activities + Mission and evangelism costs + Cost of trading + Other expenses.  
Graph 5: **Running expenses & utilities** also includes governance costs.  
Graphs 1-6: Unrestricted and Restricted amounts have been combined.  
For further definitions please see the guidance notes attached to the Return of Parish Finance:

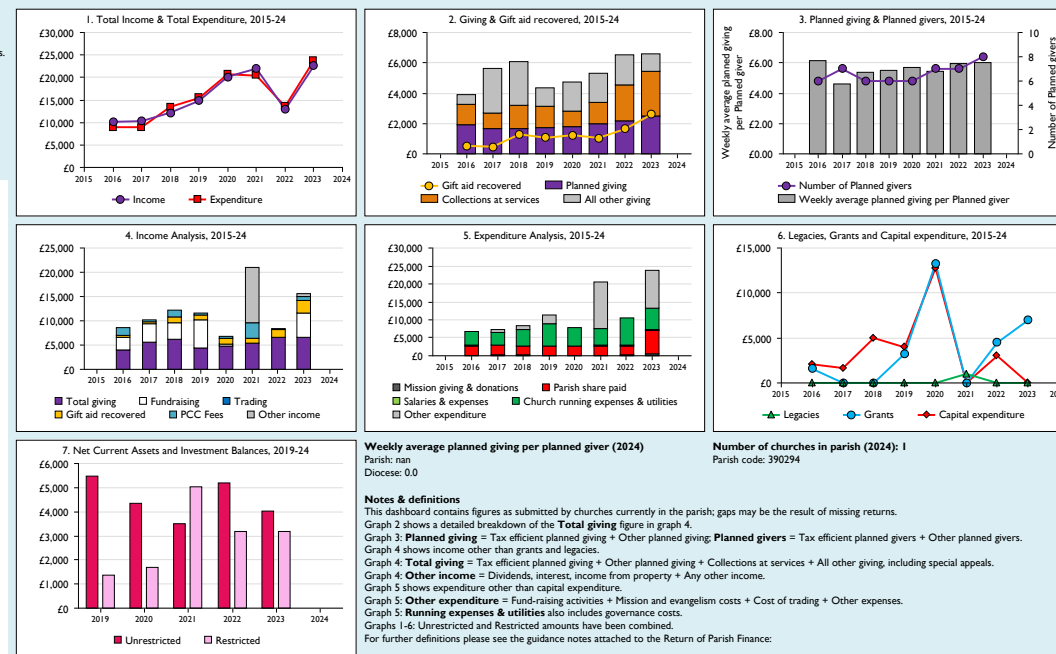


# RETURN OF PARISH FINANCE

Finance Dashboard for the Parish of Boconnoc in the deanery of TRIGG MINOR & BODMIN

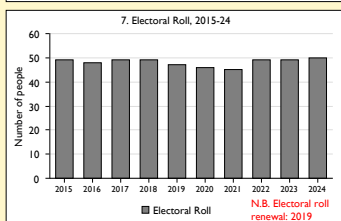
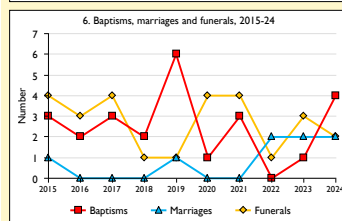
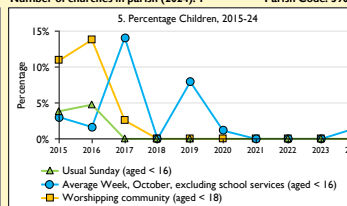
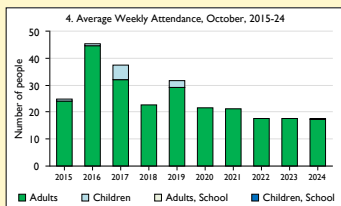
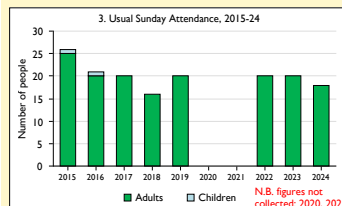
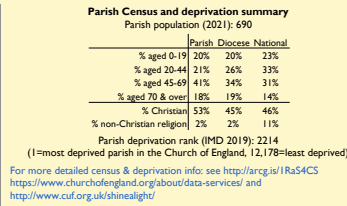
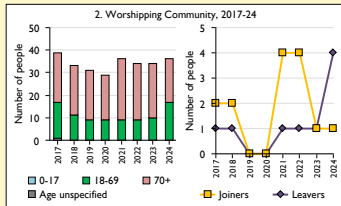
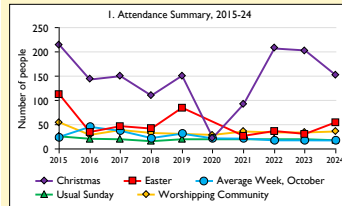


Finance Dashboard for the Parish of Bradoc in the deanery of TRIGG MINOR & BODMIN

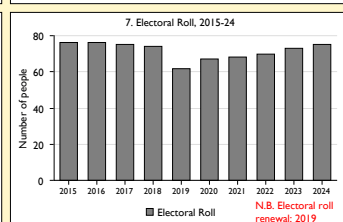
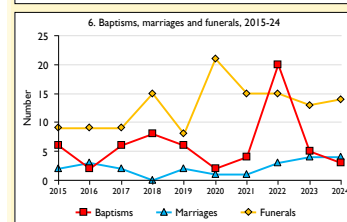
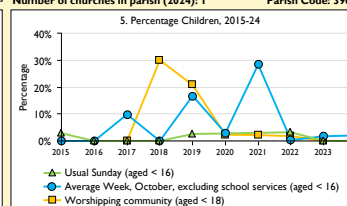
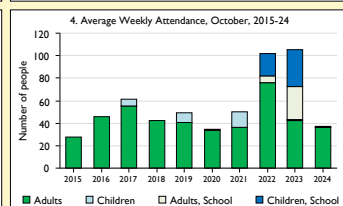
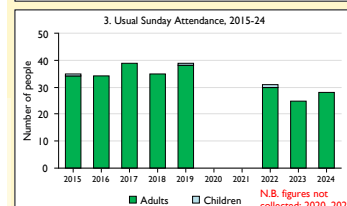
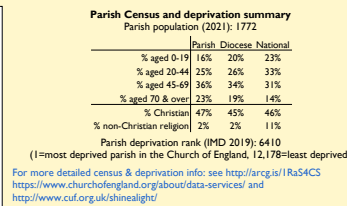
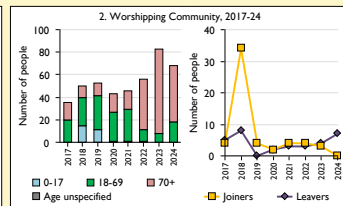
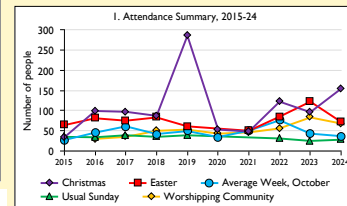


# STATISTICS FOR MISSION

**SfM Dashboard for the Parish of Lanlivery in the deanery of TRIGG MINOR & BODMIN**



**SfM Dashboard for the Parish of Lostwithiel in the deanery of TRIGG MINOR & BODMIN**



This dashboard contains figures as submitted by churches currently in the parish.

**Attendance statistics:** taken from annual Statistics for Mission returns.

**Average weekly attendance:** attendance at Sunday and midweek church services & fresh expressions in October; Figs 1 & 5 do not include attendance at services for schools.

**Easter:** Easter Eve & Easter Day; Christmas: Christmas Eve & Christmas Day.

**Baptisms:** all baptisms & thanksgivings.

**Marriages:** marriages and services of prayer & dedication after civil marriages.

**Funerals:** those held in church & at crematorium/cemeteries.

Because of pandemic-related church closures, Easter figures were not collected in 2020.

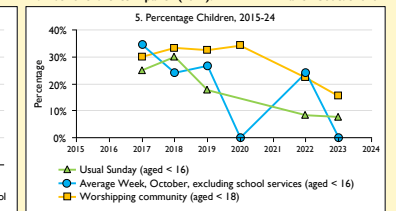
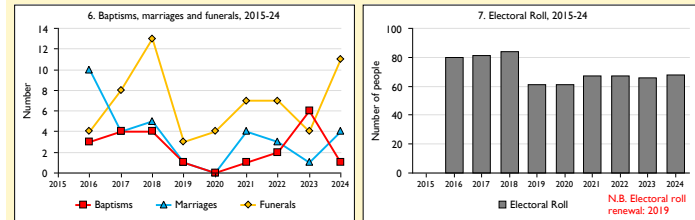
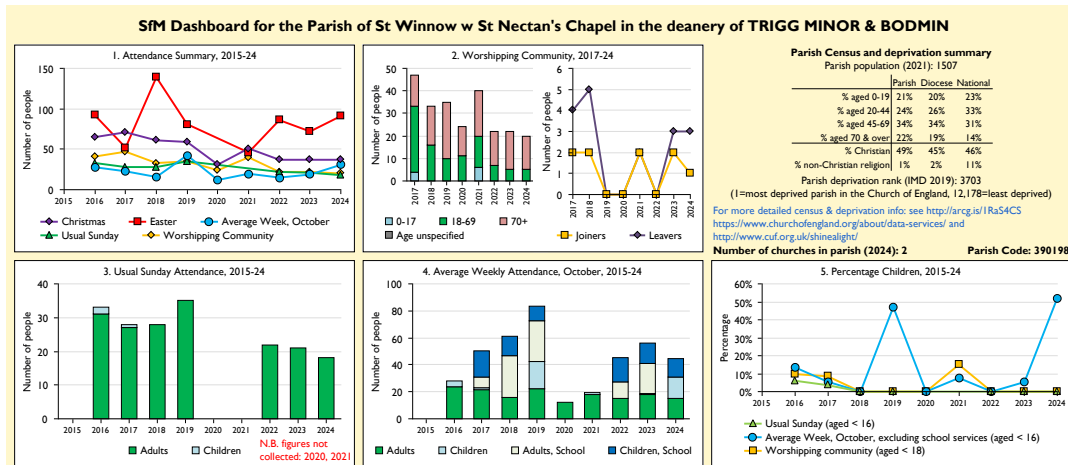
**Census data:** taken from the 2021 national Census.

**Deprivation statistics:** IMD taken from the English Indices of Deprivation, published by the Ministry of Housing, Communities & Local Government, Sept 2019.

The above statistics have been mapped onto parish boundaries so are approximations.

For more information, see: <https://www.churchofengland.org/about/data-services/>

# STATISTICS FOR MISSION



This dashboard contains figures as submitted by churches currently in the parish.

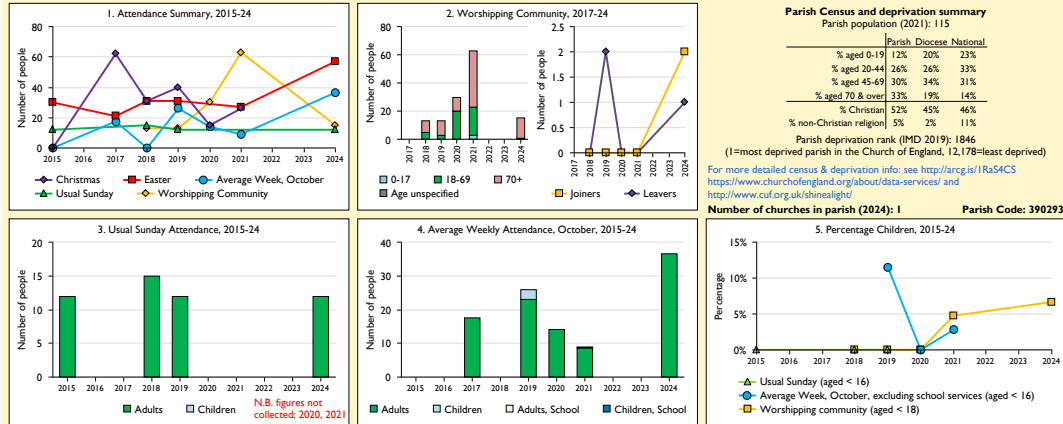
**Attendance statistics:** taken from annual Statistics for Mission returns.  
Average weekly attendance: attendance at Sunday and midweek church services & fresh expressions in October; Figs 1 & 5 do not include attendance at services for schools.  
Easter: Easter Eve & Easter Day; Christmas: Christmas Eve & Christmas Day.  
Baptisms: all baptisms & thanksgivings.  
Marriages: marriages and services of prayer & dedication after civil marriages.  
Funerals: those held in church & at crematoria/cemeteries.  
Because of pandemic-related church closures, Easter figures were not collected in 2020.

**Census data:** taken from the 2021 national Census.  
**Deprivation statistics:** IMD taken from the English Indices of Deprivation, published by the Ministry of Housing, Communities & Local Government, Sept 2019.  
The above statistics have been mapped onto parish boundaries so are approximations.  
For more information, see: <https://www.churchofengland.org/about/data-services/>

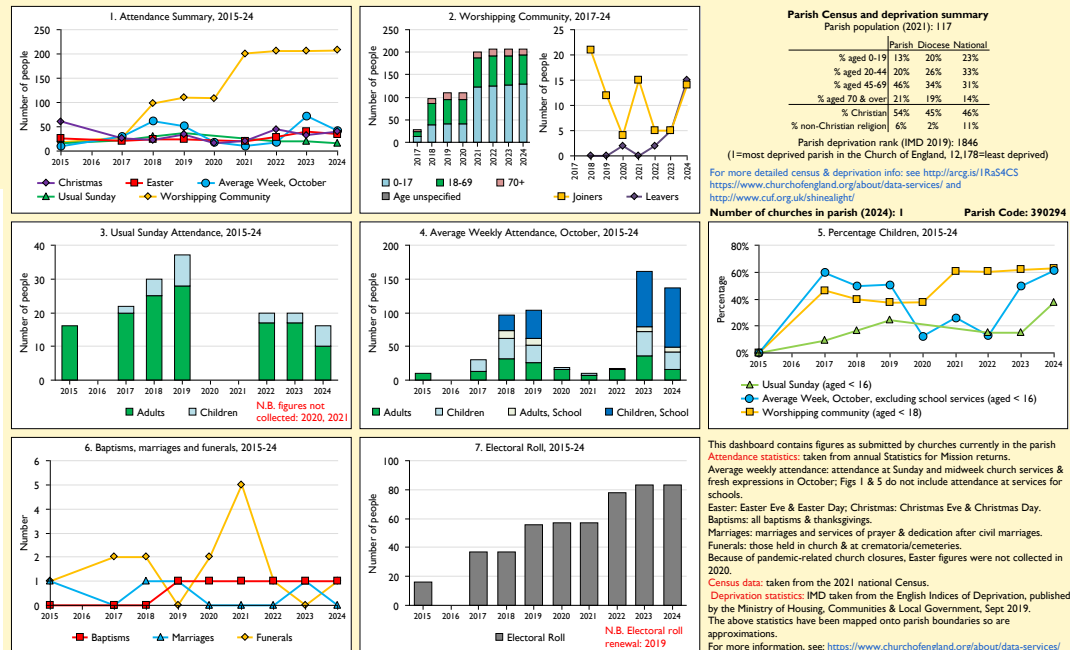


# STATISTICS FOR MISSION

**SfM Dashboard for the Parish of Boconnoc in the deanery of TRIGG MINOR & BODMIN**



**SfM Dashboard for the Parish of Bradoc in the deanery of TRIGG MINOR & BODMIN**



# MORE INFORMATION

If you would like to find out more about our diocese, please visit our website [trurodiocese.org.uk](http://trurodiocese.org.uk)

For more information on clergy vacancies, please contact the archdeacons office by emailing [archdeacons@truro.anglican.org](mailto:archdeacons@truro.anglican.org)

---

*Duwr'sonna dhywgh hwi ha re Duw agas gittho!*  
*May God bless you and watch over you!*