

Team Vicar

# CHRIST OUR HOPE LIVERPOOL

St Cuthbert's  
Croxteth Park





# WELCOME

**Thank you for your interest in St Cuthbert's Church.**

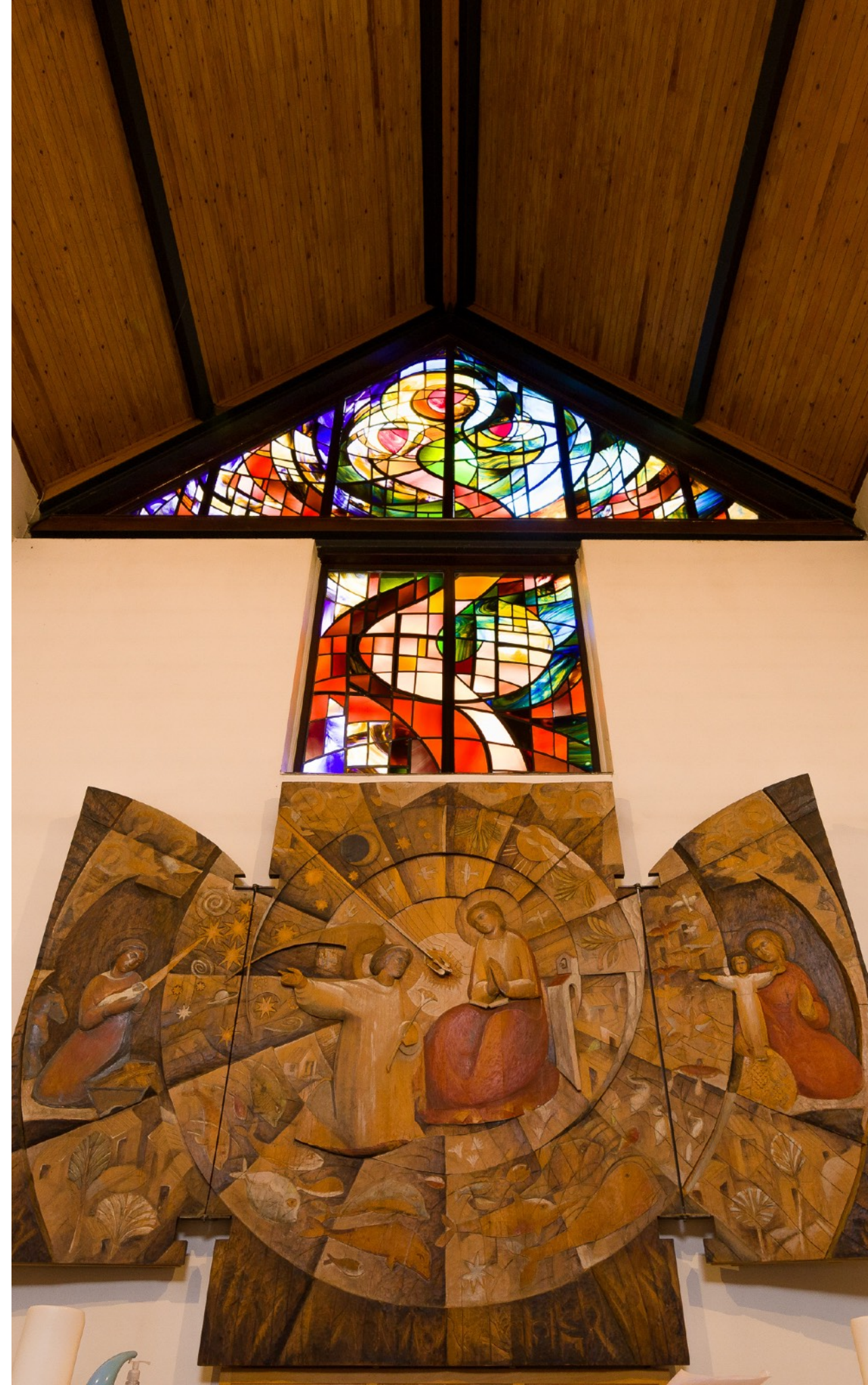
We hope you will find this profile helpful, informative and inspiring.

Our mission statement:

**TO COME TOGETHER IN HOPE AND FAITH TO SHARE  
GOD'S LOVE FOR ALL**

Created as part of our Leadership Team mission review, it describes St Cuthbert's as a church

- that loves to worship and seek God together;
- which aspires to be a community that is safe, welcoming and nurturing and
- is keen to show the love of Jesus, particularly to those living in the Croxteth Park Estate.



From Fit for Mission to...

# CHRIST OUR HOPE LIVERPOOL

- Introducing people to Jesus
- Deepening discipleship
- Developing Christian leaders
- Working for justice

We are part of Christ our Hope Liverpool, a larger single parish which includes 7 churches in the West Derby Deanery.

Together, we long to be **“Growing Christ-centred communities that enable everyone to flourish”**.

Each church leads locally, with governance and administration shared across the larger parish, freeing up clergy and laity to focus on the mission of the church.

This is part of a diocesan strategy, supported by the Church Commissioners, called Fit for Mission. We have four missional priorities: introducing people to Jesus, deepening discipleship, developing Christian leaders, and working for justice.

As a church we were keenly engaged in the creation of COHL. We've committed to it through:

- engagement with Cultivate, Pyramid Reviews (vision setting and mission planning) and Portfolios
- individuals serving on the change teams and Shadow PCC and now the PCC and its subcommittees
- joining in shared events and activities.

Some individuals have spoken positively about their experiences, in Diocesan gatherings and in creating a podcast for others exploring Fit for Mission.



# CONTEXT

St Cuthbert's Church is located in the heart of Croxteth Park Estate, a large estate of mixed housing, mostly developed in the 1980s on land that was formerly part of Croxteth Country Park. We now border the park and its woodlands surround the estate. Located on a northern edge of the city, there's easy access to the motorway network, and a regular bus service gets you into the city centre within 30 minutes.

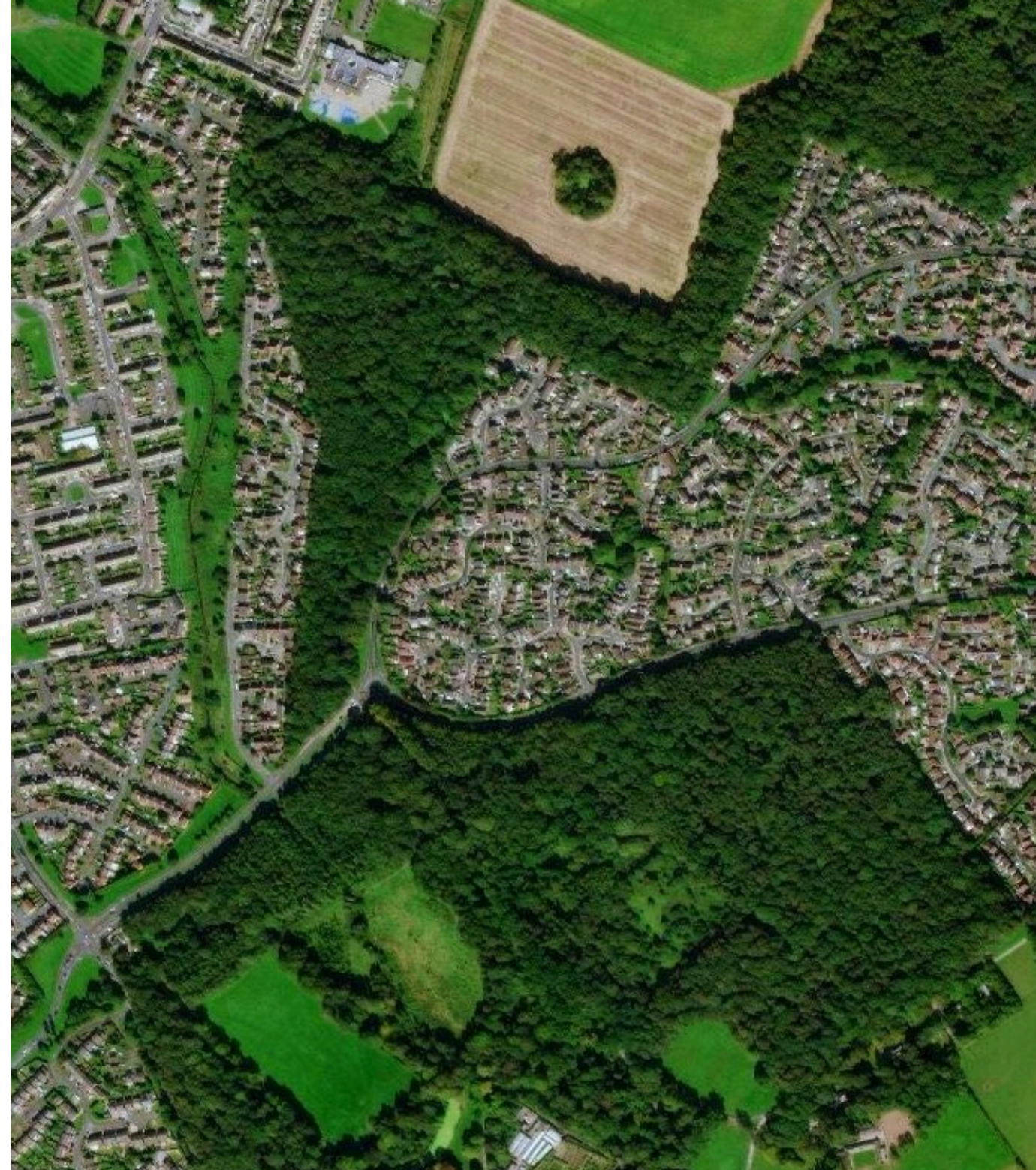
The church is near a small selection of shops (including mini-market, post office, takeaway, cafe, chemist and beauty parlour), a medical practice, nursery and Community Centre.

The estate consists of a variety of dwellings and initially these were privately owned. Some houses have been acquired by housing associations and there is provision for assisted living in the community.

According to the CUF data (accessed 28.7.25) the estate has a population of 6657 and is ranked 4870 out of 12178 where 1 is the most deprived parish. 2.8% of the housing stock is described as social housing. Poverty levels are

described as being 11% for child poverty, 16% for pensioner poverty and 10% for working age poverty.

Currently we have an electoral roll of 114, with most people living on the Croxteth Park Estate.





# SUNDAY WORSHIP

A usual Sunday includes three gatherings, two of which are generally eucharistic. Clergy usually robe for our 10am Holy Communion, but not at the more informal 6pm service. Our tradition is for clergy to wear an alb and we can also offer two sets of vestments - one set designed for us, the other coming from a local church which closed recently). A votive candle stand is available for private devotions.

## **10am Holy Communion**

This is a traditional service with hymns, using pre-recorded music tracks, shared on screens. We have an electronic organ and an electric piano, however we currently have no willing musicians.

We have a term time Sunday School, usually leaving after the Collect and returning during the distribution of communion. From time to time, we have a more informal breakfast service, where we sit around tables with refreshments.







### **4pm Toodles**

Toodles meets most Sundays, for families with children, mostly under 6 years old. It takes its name from Toodles the Dog and his friend Jack, who are at the heart of the weekly gathering. It can be a gentle introduction to church not only for the children, but also for their parents/carers. Families exploring baptism for children under 6, are encouraged to engage with us through Toodles.



### **6pm Informal (said) Holy Communion or Compline**

This is a more informal and shorter service. We gather in the round, and many of those who attend are children and parents. We love to welcome those who are keen to secure places at church secondary schools. This service offers a particular opportunity to encourage them into a life of discipleship and worship. A usual Sunday would see between 15-30 adults and children at this service.





## **Lay involvement in leading Sunday services**

During our services members of the church read the lessons, prepare and lead the intercessions, read the Gospel, administer the Chalice and occasionally preach.

## **Parade and Special Services**

Our uniformed organisations join us through the year for parade services and we share wider invitations in the community, to special seasonal services.

## **Midweek worship - Morning Prayer**

On Thursdays, those gathering for Place2Be are invited and encouraged to join with us, to share in a service of Morning Prayer.

## **Lent, Holy Week and Easter**

We mark the start of Lent with the imposition of ashes, stripping of the altar and the closing of our reredos. Holy Week is marked by evening services from the Monday to Wednesday, a service of Holy Communion on Maundy Thursday followed by the watch. The Final Hour is kept at 2.00pm on Good Friday. Easter Sunday is a great celebration, including the moment the reredos is opened to loud acclaim!





# CHILDREN

We were delighted to be officially recognised as a child friendly church in October 2017. Children are such an important part of our congregation.

As mentioned in the section on Worship, we particularly engage with children through Toodles and Sunday School.

Toodles is a lively, engaging and informal gathering, based around a weekly pattern of welcome, song (with musical instruments), bible story, crafts (with show and tell) and the opportunity to pray together. There's snacks and a time to get to know each other more. We've been delighted in recent months to safely recruit some additional leaders, building capacity for growth, meaning we can advertise Toodles more widely.

Sunday School, for children aged 6-12 meets most Sunday in our community room during the 10am service. The average attendance is 15 and we have 4 regular volunteers who lead Sunday school and create an engaging and welcoming environment, where children can have fun, get creative and grow in their Christian faith and as members of St Cuthbert's. The interactive sessions are usually based around the lectionary, often resourced from Roots for



Churches. We love to welcome the children back at the end of the service, to share something about what they've been doing and thus affirming their place in the life of our whole church.

At our 6pm service we are thankful to have many children who attend - sometimes more children than adults! These young children are so eager to read the gospel and be part of the service.





*Parade service at St Cuthbert's*

The church provides a base for Brownies, Beavers, Cubs and Scouts. The groups are encouraged to be actively involved in the life of the church and many of the leaders come from the congregation. The young people participate regularly in the all-age parade services. They

often prepare intercessions and recently have decorated the church for festival services.

The groups are also very involved in church events, such as providing a barbecue and activities at the summer fair and willingly stepping up where needed!



# EMMAUS CHURCH OF ENGLAND & CATHOLIC PRIMARY SCHOOL

This two form entry school was the first of its kind in England, built on the strong ecumenical links in Liverpool between the Anglican and Roman Catholic Church. Its most recent OFSTED and SIAMS inspections were outstanding. In 2012 we were awarded Church School Partnership Level 1, followed on in 2017 with Level 2.

There is a strong link between St Cuthbert's and Emmaus, with the vicar and some of the members contributing significantly to the life of the school. Some members of the congregation serve as foundation governors, and a member of our congregation leads the weekly Worship Group for year 6 (41 children involved during 2024-2025).

In 2025, 12 children from Emmaus were confirmed after exploring confirmation in our Junior Confirmation Group, run by our Local Leadership Team.





# COMMUNITY

We aspire to reach out to the community around us as much as possible and it is our hope that we will continue this so many more will come to know the love of God.

Alongside the worship cycle of our church, we reach out in other ways, including .

- Lent, Holy Week and Easter – pancake party, Good Friday crafts and an Easter trail, party and egg hunt sharing a message of love and hope!
- Christmas - During Advent and on into Christmas, we reach out, with a Christmas film night for families, carol singing out on our estate, Christingle service, a carol service, and we provide “hugs in boxes”. Hugs in boxes are hampers which are delivered to people within our estate who have faced difficulties in the year or who would be cheered by receiving a gift. People donate, individuals nominate others and we cheerily make and deliver hampers (last year to 90 individuals).
- Throughout the year We offer various community activities fairs, quizzes, film night, even the occasional dog show!







- APlace2B - meets weekly for lunch, open to anyone, to drop in, have a chat, receive support and share a lunch. There's usually 6-8 people who gather, with nearer 25 turning out for Christmas lunch.
- Foodbank collection point - we collect for local foodbank, both in church and in the nearby café, and share updates in services, from a congregational member who volunteers.
- Community partnership - As well as positive relationships with the local school, we are developing our ties with the other organisations who primarily serve the neighbourhood; Rhys Jones Community Centre, Croxteth Park Residents Association, Stand Farm Nursery, the local shops and Fir Tree Medical Centre.
- This year St Cuthbert's joined many other in the community, filling planters and investing in our grounds, for 'Fir Tree in Bloom'. Our grounds and gardens, where congregation and the wider community grow vegetables (sometimes used in the café soup) and plants contributed to us being awarded our Eco Church Gold Award.





We are looking for a vicar, who will encourage us to be outward looking and mission focussed, who will help us to share our faith with our neighbours.





# OUR FACILITIES

Whilst we recognise that 'church' refers to the people of God rather than the buildings only, our church buildings are a great asset for the church and the wider community.

As well as the church building, we have a separate community room, a small secure carpark and an extensive area of garden. Several groups use the buildings, and the well-equipped kitchen provides an excellent means of catering for any function.

The community room is a large static portacabin with its own electricity and toilet facilities. It is the venue for our Sunday School as well as its use by the wider community. We would like to find a way of improving the facilities in this room.

The vicarage, just five minutes' walk away from the church is a contemporary style 4 bedroomed detached house with integral garage. There are gardens both front and back and the house is in a quiet area of the Estate.

The main church building was licensed for worship in 1988. The seating capacity is 150 but can be extended to 170 by opening the bi-fold doors at the back.







Our Stephen Foster Triptych was enhanced by the addition of a stained-glass window depicting the road to Emmaus described in Luke 24.

The most recent quinquennial inspection took place in 2023. There were no significant issues arising from this report. Within the larger single parish, we're being supported with buildings compliance and have worked hard to address small shortcomings and to stay on top of regular checks.

We are proud that our building is deemed to be 100% compliant.





# FINANCE

We have no reserves and are reliant on the regular giving of the worshipping community as well ad-hoc donations, bequests, fund raising activities and room rentals. We encourage people to give through the Parish Giving Scheme, with some continuing to give on the loose plate and through payments direct to the bank account. We hold two Gift Days a year. People also give 'in kind', including goods and services for the church, for which they seek no recompense.

Donations and bequests cannot be anticipated and in the case of bequests, as we have recently found, there is little guarantee as to when the bequest will be received.

Fundraising efforts have enabled us to meet our financial commitments, including the Summer and Christmas fair as well as the quiz and film nights.

There are two regular hirers of the building and occasional hire for parties and social gatherings. The Church is used as a polling station for local and national elections.



As a church we are determined to meet our responsibilities towards our suppliers of goods and services and to pay our contribution of the Deanery Parish Share. This is challenging, but it's so important to our continuing witness and mission to our community.



**Christ our Hope Liverpool**

# TEAM VICAR

**St Cuthbert's Croxteth Park**



Christ our  
**HOPE**

## **The vicar for us**

Our next Vicar will take the lead in defining and inspiring the future direction of our church as we build on existing strong foundations and find new ways to enable us to grow as a church serving the community of Croxteth Park.

We are looking for a vicar who will be:

- Eucharistically centred and grounded in prayer and scripture.
- A good leader with a strong pastoral focus, effective at communicating and engaging with diverse groups of people across all age groups.
- An effective leader who can make decisions without being dictatorial
- Someone who will empower and encourage the congregation, willing to delegate and enable all to share in the full missional life of this parish.
- An inspiring preacher who challenges the congregation to share their Christian faith in word and deed and wanting to develop child centred worship.
- Sociable and approachable, taking an interest and getting involved in church events and activities.





- Enthusiastic about working developing our church to be younger, welcoming the opportunities to work Emmaus Primary and with our Roman Catholic partners at Our Lady Queen of Martyrs
- An effective ambassador for the parish, reaching out to local people and organisations, including those of other faiths and no faith.
- Passionate about their role, prayerfully seeking and working for a bigger church, making a bigger difference
- Confident in using technology and forms of social media.
- A compassionate, resilient diplomat with a character strong enough to deal creatively with challenging situations that may arise.
- Somebody who values and will be committed to team, motivated to take a full and active role in Christ our Hope Liverpool and West Derby Deanery.





# OPPORTUNITIES FOR GROWTH

We are committed to the four missional priorities: introducing people to Jesus, deepening discipleship, developing Christian leaders, working for justice.

At St Cuthbert's at this time, we have identified the following areas as a priority:

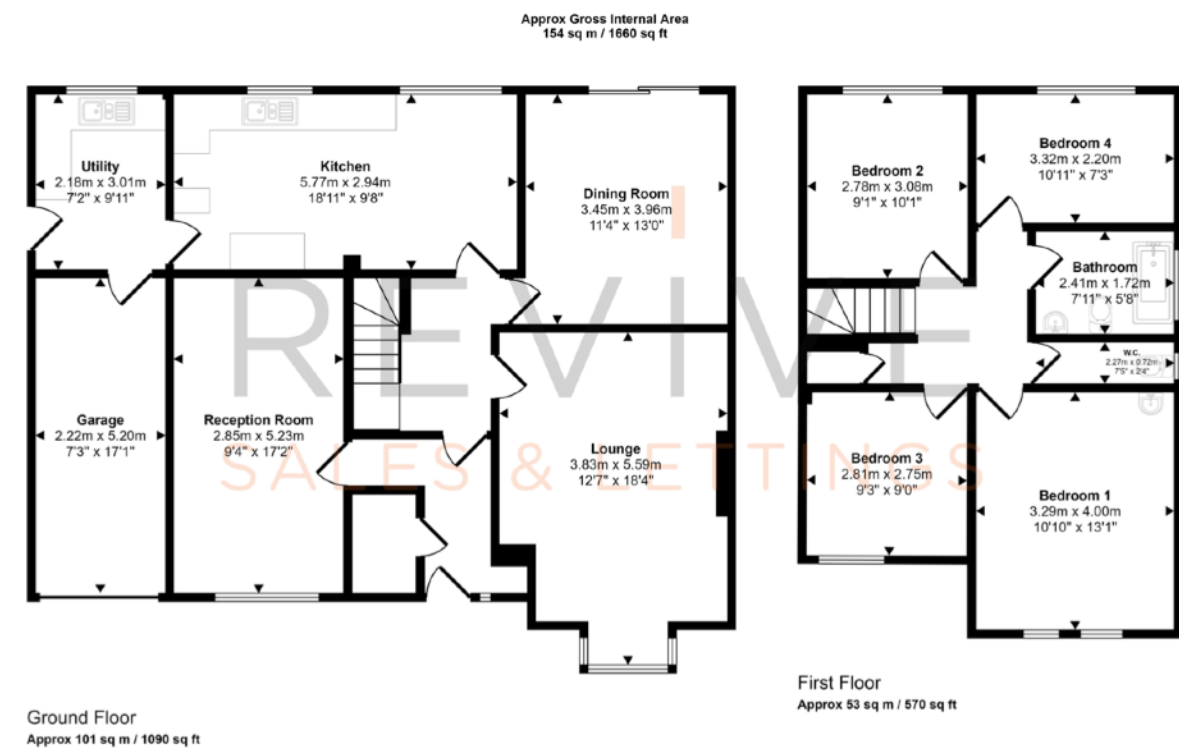
- making greater provision to nurture people in the faith, including those recently confirmed', developing time for study, meditation and reflection
  - identifying and developing the gifts and skills of others; encourage lay leadership
  - hone and develop already established community relationships and shape the priorities of the church to be outward looking and locally engaged
  - growing a strong pastoral support team
- working with lay people to improve communication with existing and new church members and the wider community
  - investing in relationship with those we meet at baptisms, weddings and funerals and with members of the congregation who cannot attend church due to illness or disability





# WHAT WE WILL DO FOR OUR NEW VICAR

- Welcome you to the family at St Cuthbert's Church and the community of Croxteth Park and to all our activities so you can get to know us and what we do.
- Enjoy getting to know you, learning from your previous experience and growing together into our shared future.
- Work collaboratively with you as we seek to further build God's kingdom and engage in the life of our community. Support you to take holidays and days off and make time for further training, reading and personal development.
- Pray for you and care for you as our priest and as a friend in Christ.
- We are aware that the 'workplace' is also the home and that there can be a blurring of boundaries between ministerial life and personal life. We undertake to support your health and well-being, encouraging you to have a healthy work/life balance, particularly with respect to the use of the vicarage.



This floorplan is only for illustrative purposes and is not to scale. Measurements of rooms, doors, windows, and any items are approximate and no responsibility is taken for any error, omission or mis-statement. Icons of items such as bathroom suites are representations only and may not look like the real items. Made with Made Snappy 360.





We pray for the person we believe in faith  
that you will choose to be our next vicar.  
May that person respond gladly to your call  
and work with us to grow your kingdom here.  
Amen.



# MINISTRY IN CHRIST OUR HOPE LIVERPOOL

Working collaboratively in Christ our Hope Liverpool will bring many benefits to you, your church and your community. This includes greater support and collegiality for clergy members and lay officers. There will also be a streamlined approach to governance, freeing up time for mission and ministry, and the ability to work as a wider area on strategic mission portfolios. Team Vicars take a lead on portfolios that relate to their gifts and experience e.g. pioneering and planting or children, youth and families. This includes working collaboratively to develop strategy, and equipping and resourcing local volunteers.

We hope and pray for thriving church communities, run by Local Leadership Teams made up of passionate and skilled individuals who will help drive local mission and ministry. You'll be supported by a committed Team Rector, Rev'd Canon Helen Edwards, and a wider PCC, who'll lead on governance tasks. We have a skilled Support Services Team, who will boost your capacity.







We value diversity in unity and encourage each worship community to act locally as we support centrally. The vision of Christ our Hope Liverpool is 'growing Christ-centred communities that enable everyone to flourish'.

### **We have four priorities**

- Introducing people to Jesus
- Deepening discipleship
- Developing Christian leaders
- Working for justice

### **We have five actions**

- Planting and revitalising
- Working to our strengths in larger teams and portfolios
- High quality support and clear lines of accountability
- Having the right buildings to support future mission
- A Single-Larger-Parish with high quality support services and simpler administration

