



SHEPSHED & OAKS
'TOGETHER IN FAITH'

BENEFICE PROFILE

WWW.SHEPSHEDANDOAKS.CO.UK



LETTER FROM BISHOP MARTYN

Thank you for your interest in this role. Please be assured that there are many people praying for this process of discernment, and we trust that you will know God's guidance as you explore whether it is right to apply.

As part of your consideration, it is important to understand that the Diocese of Leicester, like every diocese in the Church of England, is in transition. After a long process of discernment (a process which we called Shaped by God Together and which involved much prayer and literally hundreds of small group conversations in every part of the diocese), Diocesan Synod agreed a new framework for the diocese known as Minster Communities (see more on our website). Anyone coming to work in the diocese therefore needs to be committed to engaging with this new framework and embedding it within the church communities they serve (understanding that it will be applied in different ways in different contexts) and be flexible and prayerful in discerning how their particular role fits and will evolve within this wider framework. This will be explored with you at interview, and, if you are appointed, will be a major part of the induction process.

In addition to this, we are on an exciting journey of learning about intergenerational ministry (each Minster Community will have an "Intergenerational Hub" with resources devoted to working with children and young people). Alongside this, we are committed to church planting and fresh expressions of church, intercultural mission and ministry (and racial justice), reducing our impact on the environment, and crossing the divides both in the church and in the world. We therefore seek individuals who are open to learning, humble in admitting that they don't have all the answers, and yet bold in proclaiming the Gospel through word and action.

These changes require not only considerable flexibility and adaptability from clergy and lay ministers but a commitment to good self-care. As a diocese, we place a strong emphasis on wellbeing – seeing this as a partnership where you take responsibility for your own wellbeing, while knowing that there is always support available from bishops and diocesan staff. Additional support is also offered by our partner organisations such as Launde Abbey (our retreat centre), St Philip's (our interfaith centre) and of course the Cathedral.

I hope that I may have the opportunity of meeting you in the near future, but the meantime be assured of my prayers.

Yours in Christ,
The Rt Revd Martyn Snow
Bishop of Leicester

Find out more about
Minster Communities [here](#)



SHAPED BY GOD TOGETHER

Our new Shaped By God Together Minster Communities framework will help our local worshipping communities to grow the Kingdom of God and live out our everyday faith.

Shaped By God Together (SBGT) is the process through which the diocese is currently reshaping to ensure our ministry and mission is equipped and supported in the best way possible within our vision of the Kingdom of God, and our diocesan finances are used in order to resource our strategic priorities.

As part of this SBGT process, the Diocesan Synod voted strongly in favour of the Minster Communities framework in October 2021. Between 2022 and 2026, every parish, fresh expression of Church, clergy person and lay minister, chaplain and school, will be expected to participate in conversation between local context and the diocesan leadership, in order to determine how they find their place within the framework as we form 20-25 Minster Communities across the diocese. Alongside the new commitments to working together, we are encouraging all worshipping communities to develop how they enable discipleship and encourage vocations, grow in outwardly focused mission, engage with children, young people and schools, and work in partnership across differences. The development of a healthy culture of wellbeing is also vital.

More detailed information can be found on the Diocesan website, the SBGT webpages.

Claire Bampton
Diocesan Programme Manager

Find out more about
Shaped By God Together [here](#)



A PRAYER FOR SHAPED BY GOD TOGETHER

Eternal God,
You call your people to fullness of life in you
and promise to be with us
in all the changing scenes of life:
may we be shaped by you in our lives
and communities to refresh the Church,
transform the world, and build the kingdom,
as with thanksgiving for the past,
we step out in hope and trust into your future;
through Jesus Christ our Lord.
Amen.

OUR PATRONS

Each church in the Benefice of Shepshed and Oaks in Charnwood has a separate patron. The Patron of St Botolph's church Shepshed is Lord Crawshaw, David Gerald Brook. The Patron for St James the Greater, Oaks in Charnwood, is the Diocese of Leicester Board of Patronage (DBP).

The DBP comprises the Bishop of Leicester, the two archdeacons, and both Lay and Ordained elected members. It is currently chaired by Professor David Wilson and one of its members, Mr Dan Ninan is representing the Board in the discernment process in the Benefice of Shepshed and Oaks in Charnwood.

Today, the role of Patron is much changed. The Patrons are involved in the appointment process as a friend and advisor, and we act as a support for the Vicar once in post.

The Patrons greatly value the tradition of the Benefice and its sharing of faith in prayer, scripture and in action. In line with this, the Patrons are looking for someone who will be outward-looking in both its local community and Minster Community focus and who will also develop and build on the wider diocesan vision which asks:

- How are you growing the number of disciples of Jesus?
- How are you growing in depth of discipleship?
- How are you growing in loving service of the world?

The Patrons very much look forward to cooperating with the Benefice both in the context of this appointment and into the future.

With very best wishes

Professor David Wilson
Chair (DBP)

David Brook
Lord Crawshaw



BENEFICE MAP

SCAN QR CODE



Watch a journey from St Botolph's to St James [here](#)

BELTON

HATHERN

St Botolph's Church



ASHBY

A512

M1
J23

LOUGHBOROUGH

St James The Greater



COALVILLE

NANPANTAN

THE LOCAL AREA

The benefice of Shepshed and Oaks in Charnwood brings together a growing town and a rural village, each with its own distinct character and context.

Shepshed is a market town of around 14,000 people, located approximately five miles west of Loughborough, close to Junction 23 of the M1. Situated on the edge of Charnwood Forest and surrounded by attractive Leicestershire countryside, it offers a balance of town and rural living. There is a good range of amenities including several supermarkets, a small weekly market and a range of independent shops and cafes. The town hosts a diverse mix of commercial businesses ranging from industrial manufacturing and logistics to local retail and service providers, as well as several residential care homes.

There is provision for healthcare and education within Shepshed itself. There are four primary schools (including St Botolph's Church of England School), a secondary school and two specialist provisions, as well as several nurseries for younger children and a Youth Hub. Two medical centres, two dentists and two opticians allow you to access everything you need without leaving town.

Oaks in Charnwood is a smaller neighbouring village parish serving around 1,000 residents. Although close to Shepshed, it retains a distinct rural identity and strong sense of community, with close links to the neighbouring farms. The surrounding countryside boasts several Sites of Special Scientific Interest.

The area continues to grow, with several new housing developments planned or underway. This is bringing new people into the community and creating fresh opportunities for outreach, welcome and mission.



BENEFICE

Both churches are deeply committed to being welcoming communities, with a shared vision to grow and engage more families in worship. Each has developed strong and creative approaches to ministry with children and families: St James' through initiatives such as Forest School partnerships, woodland worship and family services, and St Botolph's through its dedicated children and families team, Children's Church and Messy Church. Having been in vacancy for four years, both churches have become increasingly self-sufficient and rooted in strong lay-led worship, actively nurturing and developing new worship leaders together. Seasonal study opportunities during Lent and Advent support spiritual growth across the congregations.

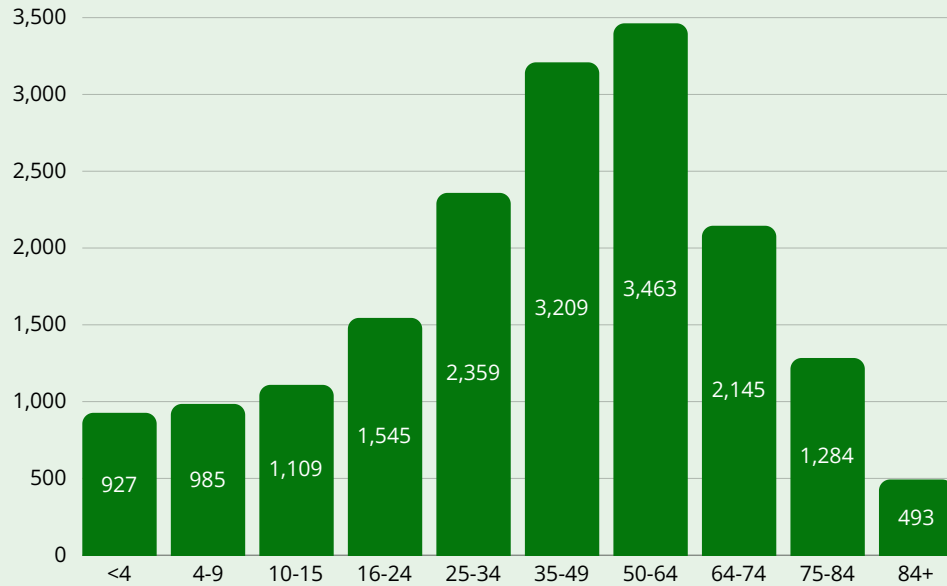
The churches maintain strong connections with their local communities, with St James' playing a central role in the farming community and hosting well-supported events such as the Spring Fair, while St Botolph's regularly opens its doors for concerts, school events and popular family services such as Christingle. Both churches also demonstrate a deep commitment to pastoral care, particularly in supporting older members of their congregations. While each church retains its own governance, they work collaboratively across the benefice, sharing resources including a joint office, administrator, communications, magazine and database systems including ChurchSuite which is licenced to both churches. Occasional joint services and mutual support between congregations reflect a growing sense of partnership and provide a solid foundation for further cooperation and growth.



BENEFICE STATISTICS

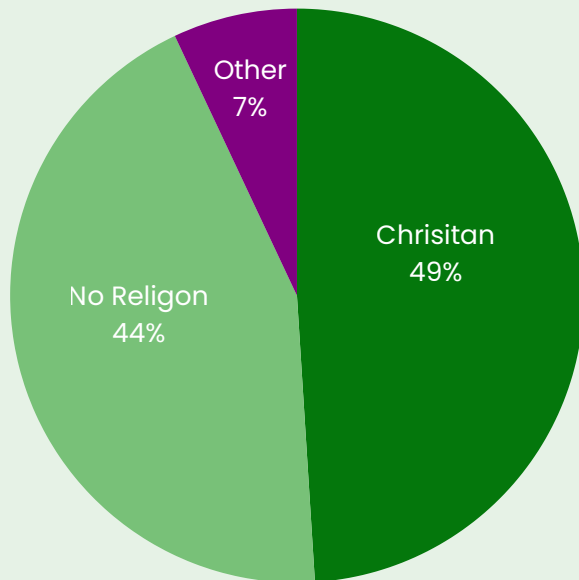
BENEFICE POPULATION

Census 2021



RELIGIOUS BELIEFS

Census 2021



St Botolph's	Adults	Children
Electoral Roll	103	N/A
Worshiping Community	141	20
Average Weekly Attendance	65	8
Funerals - 18	Weddings - 2	Baptisms - 10

St James	Adults	Children
Electoral Roll	72	N/A
Average Weekly Attendance	25	
Funerals - 6	Weddings - 2	Baptisms - 3

Parish Deprivation	Indices of Multiple deprivation (IMD) 2019 from 12239 Parishes	
St Botolph's	7291	60%
St James	9261	76%

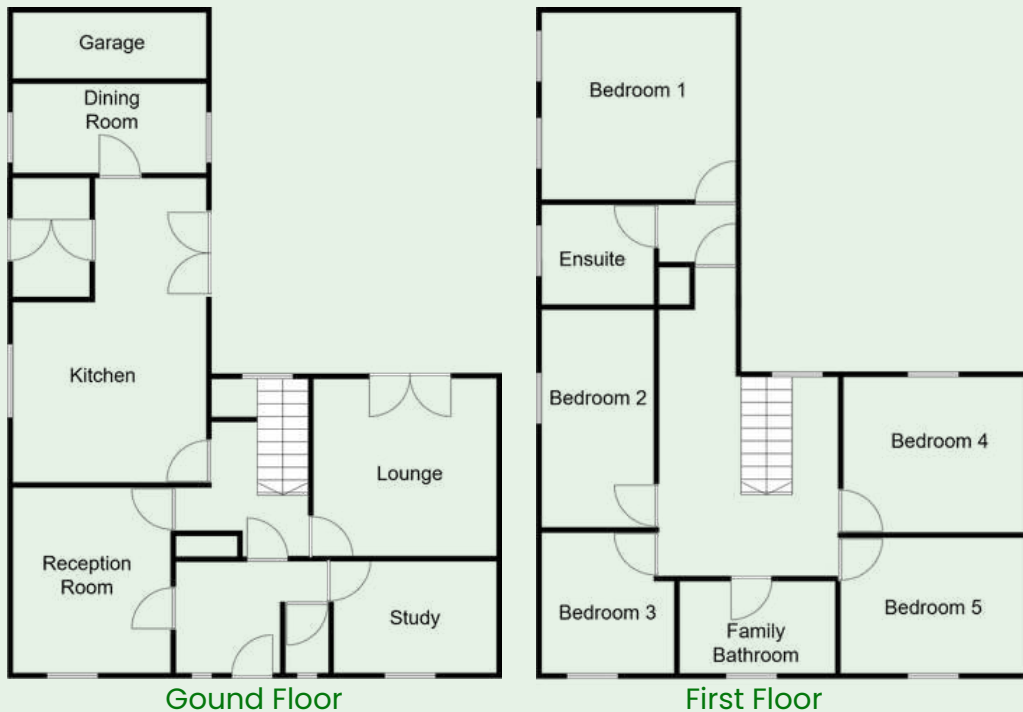
THE VICARAGE

The Vicarage is a purpose-built five-bedroom family home, located adjacent to St Botolph's Church and the church hall, offering both convenience and connection to the life of the benefice.

The house is arranged in an L-shape, with a useful entrance lobby separating the study and reception room, ideal for meetings, from the main living space. The ground floor includes a spacious lounge, dining room and a recently refurbished kitchen with adjoining utility room.

Upstairs are five bedrooms, including a principal bedroom with en-suite, along with a family bathroom.

Outside, there is a garage and large driveway, providing ample parking.




SCAN QR CODE



View more pictures of the vicarage [here](#)

ST BOTOLPH'S CHURCH



Saint
BOTOLPH'S[®]
Church Gate, Shepshed, LE12 9RJ
'Sharing the Love of God with Shepshed & Oaks in Charnwood'



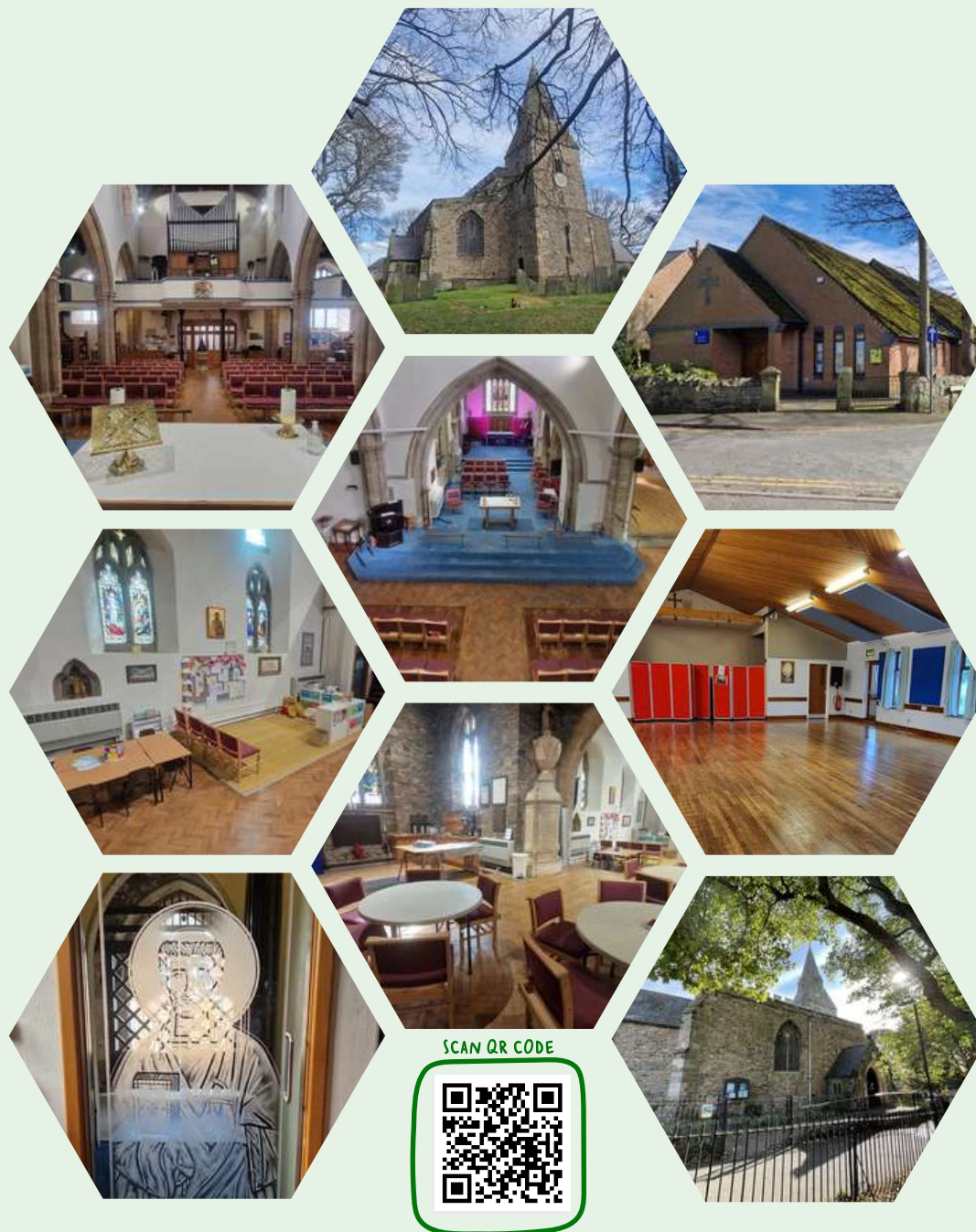
THE BUILDINGS

St Botolph's Church is a Grade 1 listed building, parts of which date from the 13th century. A substantial reordering was done in 2008 to support flexible worship and community use.

Built from local Charnwood granite, the church is of considerable historic and architectural importance and is currently on the Historic England Heritage at Risk Register. Following a major fundraising effort, roof repairs were completed in 2025. While the interior is in good condition with modern fixtures and fittings, the most recent Quinquennial Inspection highlights the need for ongoing maintenance to the fabric of the building.

The church hall is a well-used community space, incorporating the benefice office, main hall, accessible facilities and a large kitchen. Plans are in place for a kitchen refit and new flooring throughout the kitchen, lobby and toilets.

A gravel car park provides valuable parking in a town-centre location. The surrounding closed churchyard, maintained by the local authority and crossed by a public footpath, remains an open and visible part of the community.



SCAN QR CODE



Take a tour around our church with our young people [here](#)

MISSION VALUES

Our purpose is to be a welcoming family of faith, providing a flexible space for worship, learning and community gatherings. A place where people can grow closer to God, follow Jesus, use their gifts and share His love by serving others and making a difference.



A welcoming family of faith

We want to grow the number of families attending church and church events regularly, improve our engagement with schools and increase our offer of youth activities.



Growing closer to God

We want to provide more opportunities for people to come to know God, support deeper spiritual growth in our congregation, and encourage more people to explore their vocational calling.



Sharing God's love

We want to engage with the local community in meaningful ways, to share the gospel and offer practical support for the community's needs.

SERVICES

Worship lies at the heart of life at St Botolph's Church, and we seek to offer a pattern of services that is varied and flexible, enabling people to engage with God in different ways.

Our regular Sunday worship reflects a breadth of tradition and style, from reflective and traditional services to services with greater lay participation and contemporary elements. Music plays an important role in worship, with both organ-led and band-led styles, supported using audio-visual technology. The midweek worship is a quiet, simple service providing a valuable opportunity for those who cannot attend a Sunday service, with fellowship especially appreciated by those who live alone.

Alongside regular services, festivals such as Christmas and Easter are particularly well attended, and we hold additional services for occasions such as Holy Week, Ascension and All Souls. Some of these additional services may be Tenebre, Taize or Messy Church style. The church also supports people at significant life events and offers opportunities for remembrance, such as the "Light a Life" service.

Wednesdays

10am - Holy Communion / Morning Worship (3rd Wednesday)

1st Sunday

8am - Holy Communion

10am - All Age Worship

4pm - Evensong

2nd Sunday

10am - Holy Communion with Children's Church

3rd Sunday

8am - Holy Communion

10am - Morning Worship with Children's Church

4th Sunday

10am - Holy Communion

5th Sunday

Benefice Communion

Recordings of services can be found on our [YouTube channel here](#), or by scanning this QR Code

SCAN QR CODE

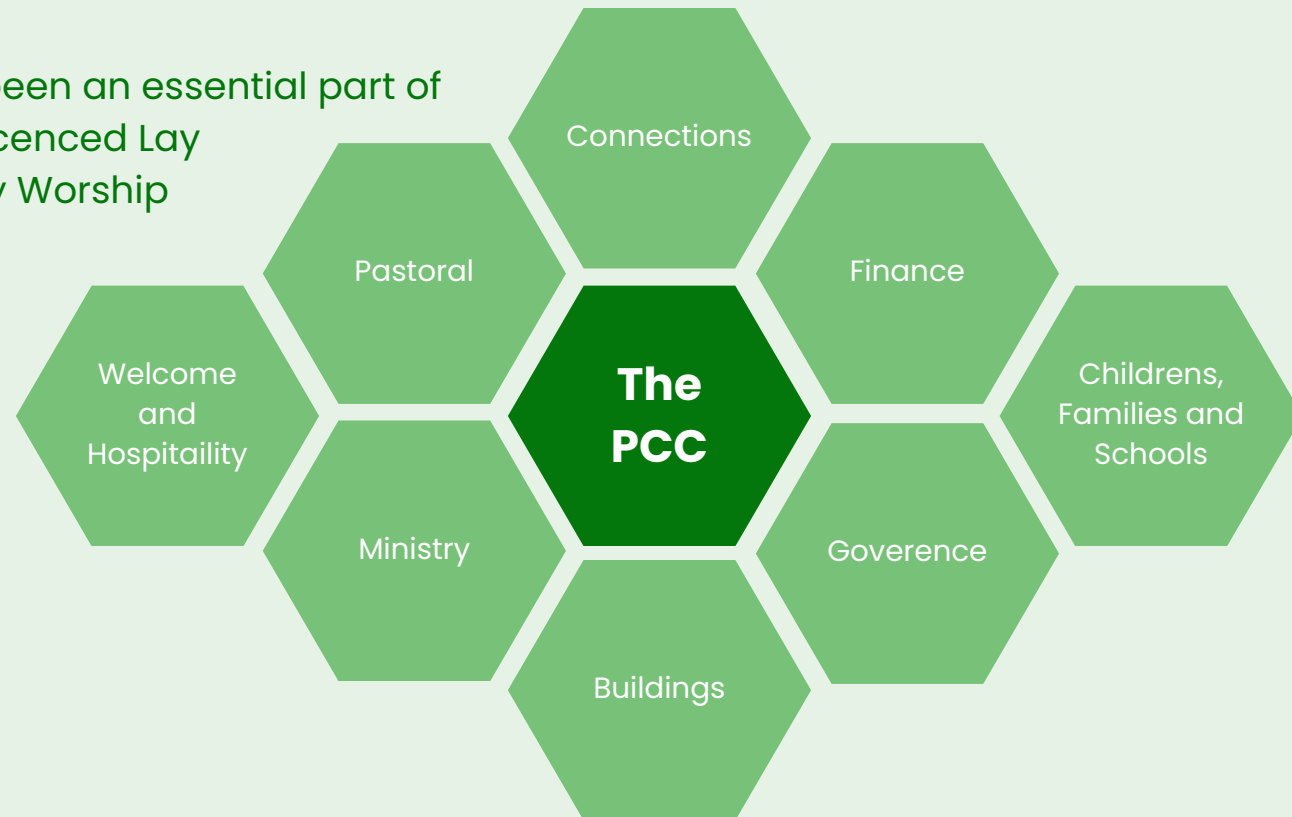


THE CHURCH ORGANISATION

The Parochial Church Council (PCC) is a team of people who, with the members of the wider church, are responsible for overseeing the life of the church to ensure we are focused on Jesus, to encourage belonging and to grow disciples in the kingdom of God. We aim to seek God's will, work well together, care for and encourage one another, seeking to share God's love with our communities.

The PCC is supported by several smaller sub committees that focus on specific tasks, allowing the main committee to concentrate on strategic issues and delegate detailed work. Each Action Group has a PCC lead and is formed of both PCC members and other members of the congregation. The finance group is led by our paid treasurer. These groups have been especially useful in making sure all the duties of a church warden are covered whilst we pray for someone to step forward into this role.

Alongside the PCC, the lay-ministry team has been an essential part of our leadership during vacancy. We have two Licenced Lay Ministers and a growing team of authorised Lay Worship Leaders who have been instrumental in continuing patterns of worship and pastoral care.



CHILDREN AND YOUNG PEOPLE

St Botolph's has a well-established children and families ministry, currently engaging around eight regular families with approximately fifteen children aged between 2 and 14. Children's Church takes place twice a month during the 10am service. The team of two leaders is supported by four additional volunteers, alongside a wider group who help deliver well-attended Messy Church gatherings three times a year, now welcoming around 70 participants. We would love to see more of these families become part of our church family.

Our ministry is enriched by a variety of activities, including summer picnics, youth film nights and sleepovers, creating a strong sense of community and belonging. A recently refreshed children's area reflects the church's commitment to being a welcoming and inclusive space for young people, who are also encouraged to take an active role in worship, with older children regularly contributing to services.



CHURCH LIFE

St Botolph's is a warm, welcoming church community that reflects a broad expression of Christian life. Our congregation spans all ages – from toddlers to those in their nineties – and includes people from a wide range of backgrounds, traditions and experiences.

Worship at St Botolph's is varied and accessible. Some services are led by clergy, others by lay members, and they may be more traditional or more informal. Music plays an important role in much of our worship, whether through the beauty of the organ and choir or the energy of a worship band, while some quieter services offer space for reflection without music.

Alongside our regular services, we run study groups during Advent and Lent, and we keen to expand these opportunities further. Our aim is to offer a range of courses for everyone at different times of the year. Small house groups are another important part of church life, and we hope to encourage more people to be part of these supportive and prayerful communities.

Our pastoral team has grown in strength and number, guided by our lay reader, and provides vital support through home visits, hospital visits, home communion and leading worship in local care homes. We believe deeply in our shared responsibility to care for one another and are committed to growing this culture of compassion and connection across the whole congregation.

St Botolph's is a lively and active church, with a wide range of groups and events that bring people together. From Men's Fellowship and Mothers' Union to flower arranging and bell ringing, there are many ways to get involved. Our social and fundraising team organises popular events such as bingo evenings, whisky tastings and soup lunches, ensuring there is always something happening and opportunities for fellowship, fun and service.

Altogether, St Botolph's is a community where faith is lived out in worship, learning, care and shared life – open to all and rooted in a spirit of generosity and joy.



CHURCH AND THE COMMUNITY

St Botolph's maintains good links with a wide range of other churches and Christian communities in our town, working collaboratively to share resources and organise events such as the Town Walk of Witness. Members of our congregation are actively involved in working with local charities such as the Volunteer Centre, local Foodbank and Passion, a Christian-led youth hub in the town centre. The church supports their work wherever we can.

Our main church building serves as a versatile community space, regularly hosting fundraising concerts for both church and charity, led by local choirs and the Loughborough Concert Band. Its large capacity and flexible layout also make it ideal for exhibitions and open days. In addition, we have developed close relationships not only with our own church school but with several other primary schools in Shepshed, visiting them to lead assemblies and welcoming students into our building for Christmas performances. Our church hall is also available for hire and is in use almost every day of the week, further supporting community activities and events.

Along with practical support, we also provide financial support to charities in our community - this extends beyond Shepshed, to the Global community of Christians. Church members regularly fundraise for Passion, the food bank, Christian Aid and the Children's Society. The congregation are also actively involved in the choice of both a local and international charity for the rest of our annual charitable giving.



FINANCE

Income & Expenditure	2025	2024
Total Income	£162,280	£112,157
Total Expenditure	£111,457	£118,673
Surplus / (Deficit)	£50,823	£-20,398

Funds Held	2025
Unrestricted – General	£132,611
Unrestricted – Designated	£58,790
Restricted Funds	£32,814
Endowment Funds	£15,995
Total Funds	£240,209

Financial Summary

The PCC paid a £40,000 Parish Contribution to the Diocese of Leicester in 2025, maintaining its commitment to supporting the wider mission of the Church.

The overall financial position improved significantly during the year, with a total surplus of approximately £50,800, compared to a deficit in 2024. This was largely due to the receipt of £39,000 in legacies, alongside stable planned giving and increased income from hall hire.

General Fund income totalled approximately £149,000, with a surplus of £38,000, demonstrating a sustainable underlying position, while also benefiting from one-off income during the year.

Income and Expenditure Highlights

- Planned giving & Gift Aid remains the largest source of income, with continued growth in the Parish Giving Scheme
- Legacies (£39k) had a significant positive impact in 2025
- Hall hire income (~£12k) increased by around 19% year-on-year
- Major expenditure areas include Parish Contribution, staffing costs and building maintenance
- Energy costs (~£11k) reduced slightly compared to 2024

Looking Ahead

The church faces ongoing financial commitments, particularly relating to fabric repairs identified in the Quinquennial Inspection, including future roof and tower work. Fundraising for further phases is planned.

While 2025 shows a strong financial position, this includes one-off income, and continued growth in regular giving will be important to sustain ministry and support future development.

ST BOTOLPH'S PRIMARY SCHOOL



SCHOOL LIFE

St Botolph's Church of England Primary School is a vital part of the life and mission of the benefice. Situated in Shepshed on Loughborough Road, it serves around 380 pupils from diverse backgrounds and plays a key role in our connection with families across the community.

The school's deeply rooted Christian vision - *"New day... endless possibilities"*, inspired by John 10:10 - shapes the whole of its life. This vision nurtures aspirational, independent and confident children who are encouraged to flourish academically, socially and spiritually. Pupils are supported to become creative, active and reflective learners, ready to respond to an ever-changing world.

The latest SIAMS inspection praised the school for living out its Church foundation in ways that genuinely transform lives. There is a strong culture of compassion, forgiveness and care, especially for the most vulnerable. Many describe the school as a *"magical place to be"*, where every child is valued and new beginnings are always possible.

Collective worship lies at the heart of school life and is inclusive, invitational and rooted in Christian teaching. Clergy and church members contribute regularly, helping sustain a strong relationship between church and school. While whole-school services in church are not always feasible, livestreaming and creative approaches ensure every child can take part.

Religious Education is a strength, offering a rich curriculum that helps pupils explore Christian belief alongside other faiths and worldviews, fostering respect and empathy.

The close partnership between the school and the benefice creates significant opportunities for shared worship, pastoral support and community engagement, making St Botolph's a key partner in our mission across generations.



ST JAMES THE GREATER



Oaks in Charnwood

St JAMES
LE12 9YD
The Greater

'Sharing the Love of God with Oaks in Charnwood & Shepshed'



MISSION VALUES



The Parochial Church Council (PCC) seeks to help ordinary people to live out their faith as part of the parish community, loving and serving others, and deepening their faith in God through prayer and worship, and learning to trust in Jesus.

We would like to have greater input on prayer and Bible study within the church to help equip everyone to live out these aims.

TYPICAL SERVICES

Our regular worship follows a central Anglican tradition with the Book of Common Prayer used as the main influence in the liturgy for our principal Sunday service. On the 3rd Sunday of each month Oaks Morning Worship offers a more relaxed, lay-led service.

Alongside regular services, the church marks key moments in the Christian year and the community. Festivals such as Harvest are particularly well attended by the local farming community, and we hold additional services for occasions such as Plough Sunday and Pet Blessing. During the summer months, we lead a service of Woodland Worship in the beautiful dell behind our church, aimed at encouraging younger families to explore spirituality with nature.

All Sundays

8.30am - Holy Communion

3rd Sundays

11am - Oaks Morning Worship

5th Sunday

Benefice Communion



THE BUILDINGS

St James the Greater Church is a Grade 2 listed building, set within an open churchyard that remains available for burials and is an important part of the life of the local community.

The present church dates from the 19th century, having been rebuilt in 1883 on the site of an earlier church from 1815, and it retains a strong sense of history and continuity. The building is welcoming, with fixed pew seating that supports a traditional style of worship while still allowing flexibility for different services and events. The church is also home to a ring of eight bells, which continue to be part of its worshipping and community life.

Alongside the church is a church hall, which plays an important role in both church and community life. The hall has recently benefited from a refurbished floor and includes a well-equipped kitchen, making it a practical and well-used space for gatherings, events and hospitality.

A particular feature of St James' is "The Dell", an area of nearby woodland used for outdoor worship and community activities. This space enables regular woodland worship, particularly engaging families and children, and reflects the church's commitment to connecting faith with the natural environment.

Together, the church building, hall and outdoor spaces provide a flexible and valued resource for worship, community life and creative mission in a rural setting.



SCAN QR CODE



Take a tour
with us [here](#)

CHURCH LIFE

The congregation at St James' is a predominantly elderly group and there are currently no young families in the main congregation. However, as a church we are very welcoming to persons from all backgrounds and in addition to our family service which currently contains one young family, we also host outdoor worship services in the summer in the woodland area at the rear of the church. This sometimes attracts around 20 people, some of whom are regular church goers and some who are attracted by this new format.

The church has strong links with the local community, and community events such as Harvest, our Daffodil Tea in March and our Christmas Concert in December are well supported. The church organises an annual Oaks Spring Fair event in May which attracts around 3,000 people and is very much a partnership between the church and the local community. The church also reaches out to the local community at our Plough Sunday service and our Pet Blessing service.

The church is led by two churchwardens, a Parochial Church Council (PCC) of nine members, and is well supported by two retired clergy who lead almost all our Holy Communion services.



CHURCH AND THE COMMUNITY

The church at Oaks in Charnwood is very much the focus of the local community. There is a well maintained church hall which hosts the Mothers' Union, the Women's Institute, a thriving dance group with a membership of around 70 people, a dance academy, a yoga class, a garden club which is very popular, the local Parish Council, a forest school in the woods at the rear of the church, and a local residential school who also hire a room and the use of our woodland area for outdoor education. Within the parish is the Cistercian monastery of Mount St Bernard's Abbey with whom the church has a history of good relations.



FINANCE

Income & Expenditure	2025	2024
Total Income	£25,732	£27,645
Total Expenditure	£24,114	£26,980
Surplus / (Deficit)	£1,618	£665

Funds Held	2025
Unrestricted – General	£19,870
Unrestricted – Designated	£9,250
Restricted Funds	£5,430
Total Funds	£33,550

Financial Summary

The PCC of St James the Greater maintains a carefully managed and sustainable financial position, appropriate to its size as a rural parish church.

A Parish Contribution of £6,500 was paid to the Diocese of Leicester in 2025, reflecting a strong commitment to supporting the wider mission of the Church while remaining proportionate to local resources.

Income and expenditure remain broadly balanced, with a modest surplus of approximately £1,600 in 2025. This follows a similar position in 2024 and reflects steady giving and prudent financial oversight.

Income and Expenditure Highlights

- Planned giving and regular donations form the core of income
- Fundraising events make an important contribution
- Hall use and community activities provide additional income
- Major expenditure areas include Parish Contribution, insurance and routine building maintenance
- Costs are carefully managed in line with the scale of the church and its activities

Looking Ahead

As a smaller rural church, St James' is mindful of the need to balance financial sustainability with maintaining its building and presence within the community.

The PCC continues to:

- Encourage regular giving
- Support fundraising activities
- Plan for future maintenance of the church building

St James' demonstrates a resilient and responsible financial approach, supporting its ongoing ministry and its valued role at the heart of the village community with finances that are modest but stable and well managed.

BEACON IN THE FOREST MINSTER COMMUNITY



**BEACON IN
THE FOREST**
MINSTER COMMUNITY



ABOUT THE MINSTER COMMUNITY

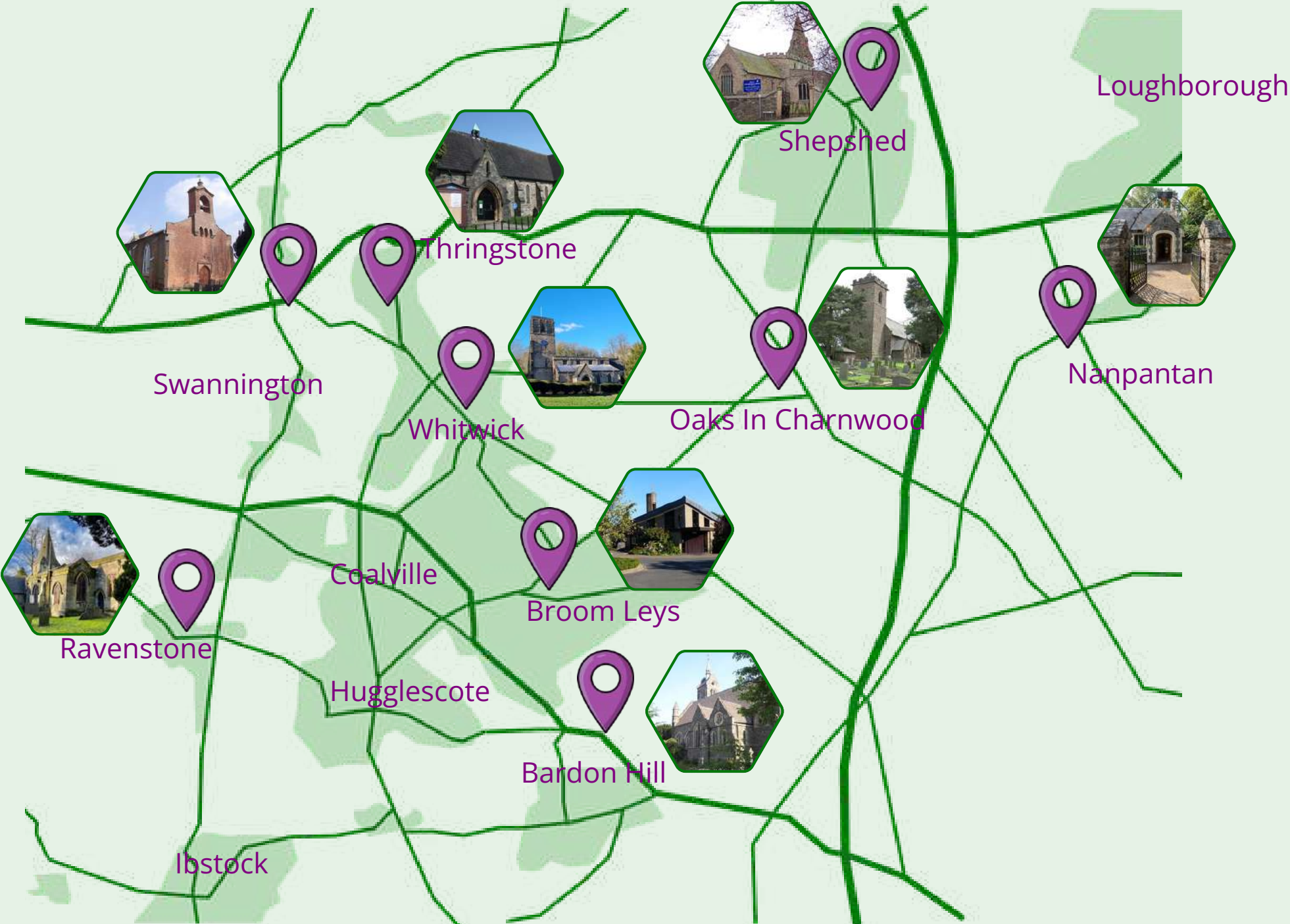
The Beacon in the Forest Minster Community brings together parishes and benefices across Shepshed, Oaks in Charnwood, Whitwick, Thringstone, Ravenstone, Swannington, Bardon Hill, Nanpantan and Broom Leys. Together we hope to achieve our shared desire to see God's Kingdom come, with people coming to know Jesus, growing in faith and ministry, and offering loving service to the community and the world.

A key part of our vision is that mission and ministry should be 'local, distinct and shared.' While each church retains its local identity, the Minster Community provides a framework for deeper collaboration, shared mission and a sustainable pattern of ministry for the future. Shared priorities already emerging include intergenerational and schools-focused ministry, outdoor and eco-church initiatives and engagement with local needs such as foodbanks, retirement communities and new housing.

It is hoped that bringing our strengths together will help us to develop ministry creatively, support one another more effectively and release time and energy for local outreach and pastoral care. As our proposal says, our collective hope is for 'stronger relationships, new worshipping communities, deeper discipleship and a renewed experience of being the Body of Christ across our parishes.'



MINSTER COMMUNITY MAP



PATTERNS OF MINISTRY

A collaborative pattern of ministry is proposed, shaped by networks, shared learning and locally rooted leadership. Each parish will have a focal minister supported by licensed and locally authorised lay ministers, as well as a named ordained minister. Alongside this, network groups will be established to support best practice, offer mutual encouragement and the sharing of resources across a range of roles and ministries.

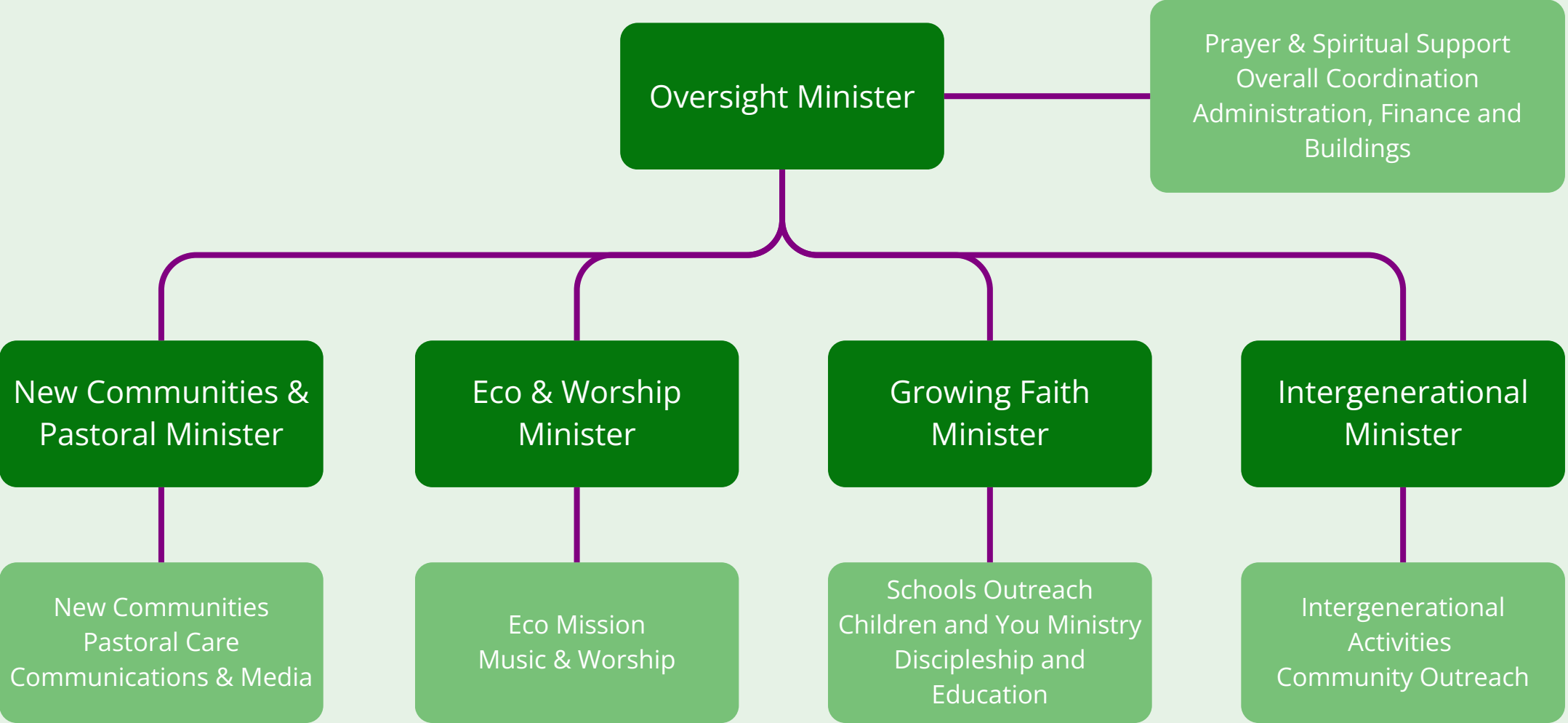
Our proposal anticipates three full-time stipendiary clergy and two part-time posts, each with a specific area of missional oversight alongside parish responsibility. The Oversight Minister, based in the benefice of Shepshed and Oaks in Charnwood, will work with an Oversight Group to provide strategic leadership, nurture collaborative working and help shape the spiritual and missional direction of the Minster Community.

As the Minster Community develops, we will need to build sustainable finances, encourage wise stewardship of buildings and cultivate a culture of prayerful discernment. This is a hopeful and ambitious vision - one that an Oversight Minister will play a crucial role in bringing to life.



PROPOSED MINSTER MINISTRY TEAM

We envision a team of ordained ministers serving across the Minster Community, with oversight in key areas of mission and ministry. The following outline represents an aspirational example of how roles could be shaped and resourced across our parishes.



Each parish will have a named Ordained Minister to provide oversight of the parish.

We foresee our ministry to be local, distinct and shared across the minster community through networks.



SHEPSHED & OAKS
'TOGETHER IN FAITH'

WWW.SHEPSHEDANDOAKS.CO.UK/VACANCY



STBOTOLPHSCHURCHSHEPSHED
STJAMESTHEGREATEROAKSINCHARWOOD



**THE CHURCH
OF ENGLAND**



Diocese of
Leicester
Shaped by God



VICAR OF THE BENEFICE OF SHEPSHED AND THE OAKS IN CHARNWOOD AND OVERSIGHT MINISTER

ABOUT THE ROLE

Our new Vicar and Oversight Minister will lead us spiritually and strategically, both as a benefice and in overseeing the mission and ministry of the churches and worshipping communities in the Beacon in the Forest Minster Community.

Therefore, we are looking for someone who will:

- Look to the future, see the bigger picture, being willing to take risks in the name of Christ
- Be part of the continuing development and expansion of the vision for growth and change within the Diocese, and lead the benefice as part of its Minster Community
- Be comfortable with leading through significant cultural change and willing to engage in conflict transformation as part of change and growth
- Be committed to good self-care and personal well-being so as to flourish in their life and ministry as a disciple of Christ.
- Hold oversight pastorally and enable the staff team
- Work collaboratively with the clergy, the lay ministry team, and other lay people in planning ministry and mission.
- Lead and preach at services, including Holy Communion and other parish worship.
- Help all age groups grow closer to God through worship, prayer and Bible study.
- Take us deeper into our calling to prayer, mission, and discipleship
- Help grow others in their calling and release them into ministry
- Encourage and support the pastoral team in its work within the benefice, particularly in deep listening, visiting and supporting individuals and families.
- Have a heart for the local community and take the role of mission within the wider community forward as a primary focus of the church
- Engage with and grow Intergenerational and Intercultural Worship as part of church life and mission
- Build and encourage others in building relationships in the wider community including schools, local groups and civic partners.
- Be competent in the use of technology and software systems as part of church life



VICAR OF THE BENEFICE OF SHEPSHED AND THE OAKS IN CHARNWOOD AND OVERSIGHT MINISTER

AS OVERSIGHT MINISTER

- Encourage the building of good relationships and a sense of partnership and care for one another across the churches, schools and missional activities of the Minster Community
- Convene the Resourcing Ministry Team and oversee the provision of worship and teaching across the Minster Community
- Lead the Oversight Group in encouraging good governance and in moving forward the vision outlined in the Minster Community proposal
- Encourage the formation of network groups and sharing of resources and support
- Prayerfully discern with others where God may be opening new opportunities for kingdom growth in numbers of disciples, depth of discipleship and loving service to the world

ABOUT YOU

Our new Vicar and Oversight Minister will be a spiritually mature leader who loves Jesus and wants others to come to know him.

Therefore, we are looking for someone who:

- Is a person of deep and joyful faith, keen to learn and grow as a follower of Jesus
- Lives a life founded on prayer
- Will embrace and engage with the work of the Spirit, both personally and as a leader in the church
- Has gifts of strategic leadership and organisation
- Is a strong team player with a collaborative style
- Is open-minded and willing to explore new ideas
- Will be a vision-holder, able to communicate clearly and lead through change
- Embraces the call and changing needs of ministry and mission, as it continually evolves
- Relates well with people of all ages
- Is an enabler and encourager of others
- Is confident in leading worship, preaching and teaching across a variety of liturgical and musical traditions
- Can meet the challenge of balancing responsibilities across the minster and benefice



VICAR OF THE BENEFICE OF SHEPSHED AND THE OAKS IN CHARNWOOD AND OVERSIGHT MINISTER

WE CAN OFFER

- Support and companionship in prayer and daily life
- Committed and active members of our churches, deanery and diocese who will work with and support you in your role.
- A church family that is prayerful and missional at heart
- Regular opportunities for personal retreats and quiet days
- Strong administrative support with dedicated office space
- A committed team of colleagues (paid and voluntary)
- A Minster Community of churches already beginning to work together and ready to welcome you, committed to prayer and building relationships through regular 'prayer and share' events.
- A Transitional Oversight Group working to effect and evolve the 'next steps' outlined for the year.
- A Ministry Team in formation along with various networks of support beginning to emerge including Safeguarding, Treasurers, Church Wardens, Children and Youth, Eco Church.