



ST GEORGE'S EVERTON

Parish Profile 2024



‘A UNIQUE OPPORTUNITY’

The role of Missing Generations Senior Lead and Priest in Charge of St George’s Everton is an opportunity to lead a £1m investment to grow church especially focused on the ‘missing generation’ of 11-29 year olds. This is a unique opportunity for a leader whose heart beats a bit faster when faced with the challenge of growing the Kingdom of God in a more disadvantaged area of England, especially amongst Generation Zs

Is this the sort of challenge that grabs you?

We are a church with welcome at its heart - a family of all ages and backgrounds. We’re informal, friendly - a bit rough around the edges, with Christ at the centre of all we do. There is huge opportunity for our new leader to build on this foundation, valuing all ages and life experiences, challenging us to step out in faith to reach those who are missing and to develop, encourage and build vibrant expressions of faith and hope at the heart of our communities.





Everton has the best views of Liverpool

OUR CONTEXT

EVERTON

People in Everton are rooted in the place they live, with their identities shaped by place and family relationships. Many people spend their whole lives here, with those who move away often keeping very strong ties to the community.

This area of Everton continues to be one of the most disadvantaged wards in Liverpool. The impact of this long-term poverty can be clearly seen by the high levels of poor physical and mental health. Down the decades, many major decisions that negatively impacted Everton were made without the involvement or insight of the local community. Our history and context are important, and strongly influence what we do.

As with many urban estates, church attendance is lower than the national average, this is not due to an aversion to Christianity. Indeed, many residents expect the churches to be heavily involved in the community and welcome strong links.

Everton has a long history as a white working-class community which has become very diverse in the last 10 years. It is a strong community but a community under pressure. New outworking's of church need to be grounded in trust, respect, genuine friendship, and collaboration and anchored in God's spirit of love and justice.

'OUR COMMUNITY'

There is much to celebrate about Everton and our place in it: Everton Park with children's playgrounds, fitness, history trails, a wildflower meadow and – we're proud to say – the best views in Liverpool! We're also lucky to have two Premiership football clubs only a short walk away – with plenty of good-natured rivalry between those of competing loyalties within our congregation. Here are some of the key local organisations /groups:



**The Beacon
Church of England Primary**

The Beacon Church of England Primary School [website](#)

Learning Together, Following Jesus

We are incredibly proud to have a strong involvement with our neighbouring school that reflects Christian values and has been rated 'Outstanding' by Ofsted. We have three Foundation Governors and we provide Collective Worship activities. *"moments are enriched through the involvement of the local church. The vicar is actively involved in the life of the school. Worship is led in church weekly."* [SIAMS 2024](#)



North Liverpool Academy [website](#) also neighbours the church teaching Yr7 to Sixth Form with over 1,200 pupils.

EAT

Everton & Anfield Together.

St Georges, working closely with Holy Trinity and Christchurch Anfield, a charity to offer basic requirements to people who live within these communities

The Albion

A well used community building next to St George's hosting a boxing club, gym and sports club



**Breckfield North
Everton**

Neighbourhood Council (BNENC)

Community based voluntary organisation that provides practical help, advice, support and training with a Centre home to a number of organisations that provide help and support to local residents. [Here](#).



The Parish covers North Everton ward and parts of the Vauxhall wards [here](#).



Friends of Everton Park

A very pro-active community group investing in the park beside St George's.

Their work has seen major improvements within the park and encouraging activities such as the marathon and music festivals



A community linked through Everton life [Here](#)

**See the Generation Project
Proposal for our community
listening & research work**

OUR PROJECT

GENERATIONS PROJECT

The Missing Generations project in Everton aims to see a step change in the number of new disciples in the 11-29 year-old age range and by doing so become a 'resource' (people, money, ideas, training, learning from mistakes) to the wider church. The project has £995k of funding, over the next two years, with the **aim of introducing 100 new young people to faith in Jesus**, and then 50 new people each year thereafter.

The three churches in Everton (St Georges, St Peters with St John Chrysostom) working together engaged in an extensive process of discernment, seeking the guidance of God, the wisdom 'on the ground' in our community and through wider research. These highlighted new spaces are needed beyond the traditional 'spaces' of the Sunday morning services and the congregations that form around them, new spaces that are diverse, flexible and contextually appropriate. Rather than new 'one size fits all' worshipping community, multiple, smaller, worshipping communities led by small teams of leaders - supported, trained and mentored by the clergy and a support team, is right for this context. We refer to this as a Hub and Spoke model...

'HUB & SPOKE MODEL'

The **Central Hub** comprises:

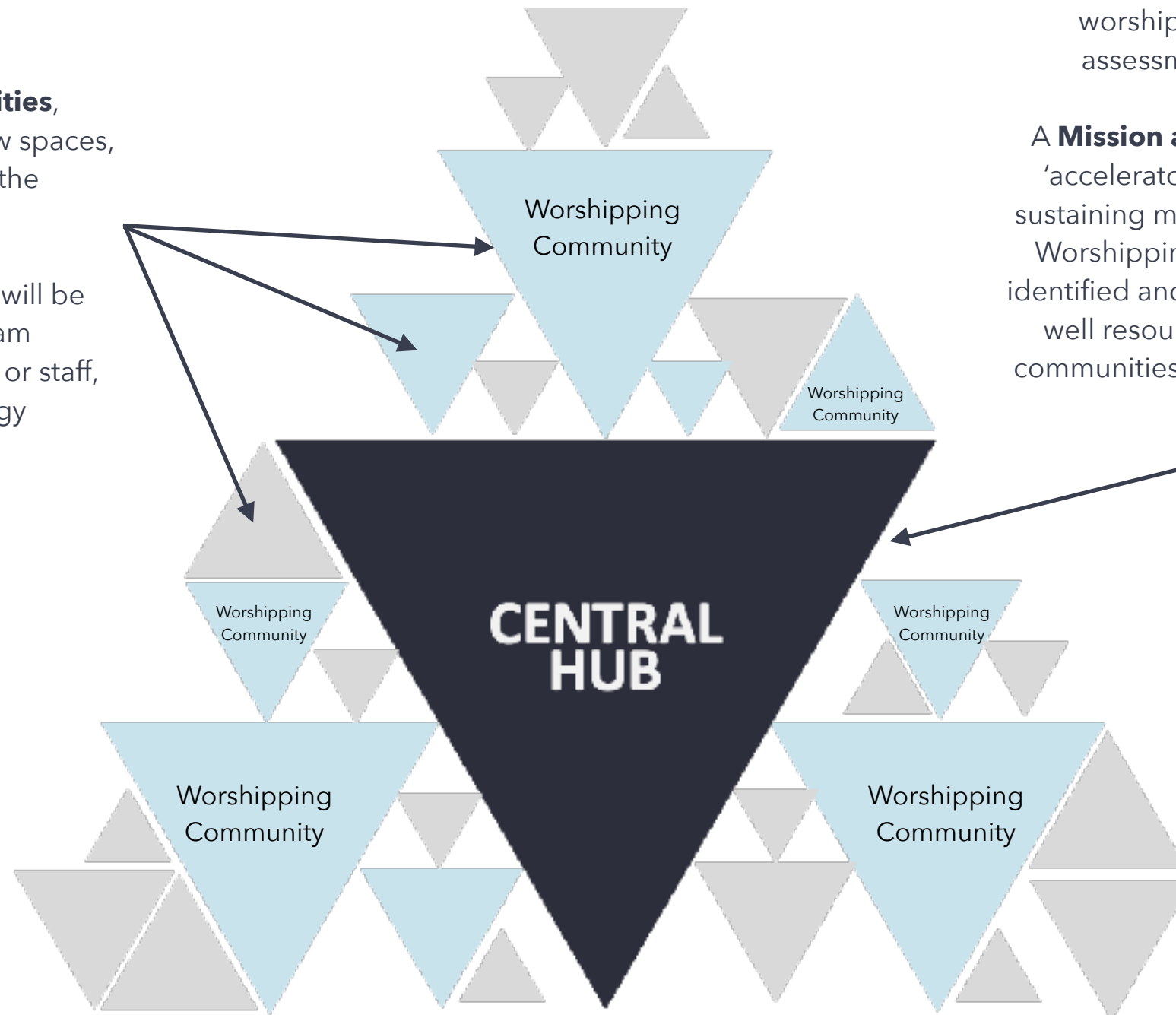
A **Delegated PCC Sub Committee** - the 'brakes' ensuring compliance and financial integrity through project governance.

A **Resourcing Team** - the 'oil' supporting the practical and the administrative aspects of the worshipping communities e.g. risk assessments, advertising, training.

A **Mission and Vision Team** ('MAVs') - the 'accelerator' responsible for driving and sustaining missional change by ensuring the Worshipping Community leaders are first identified and then supported, mentored and well resourced. Plus holding the diverse communities together with a common vision and identity

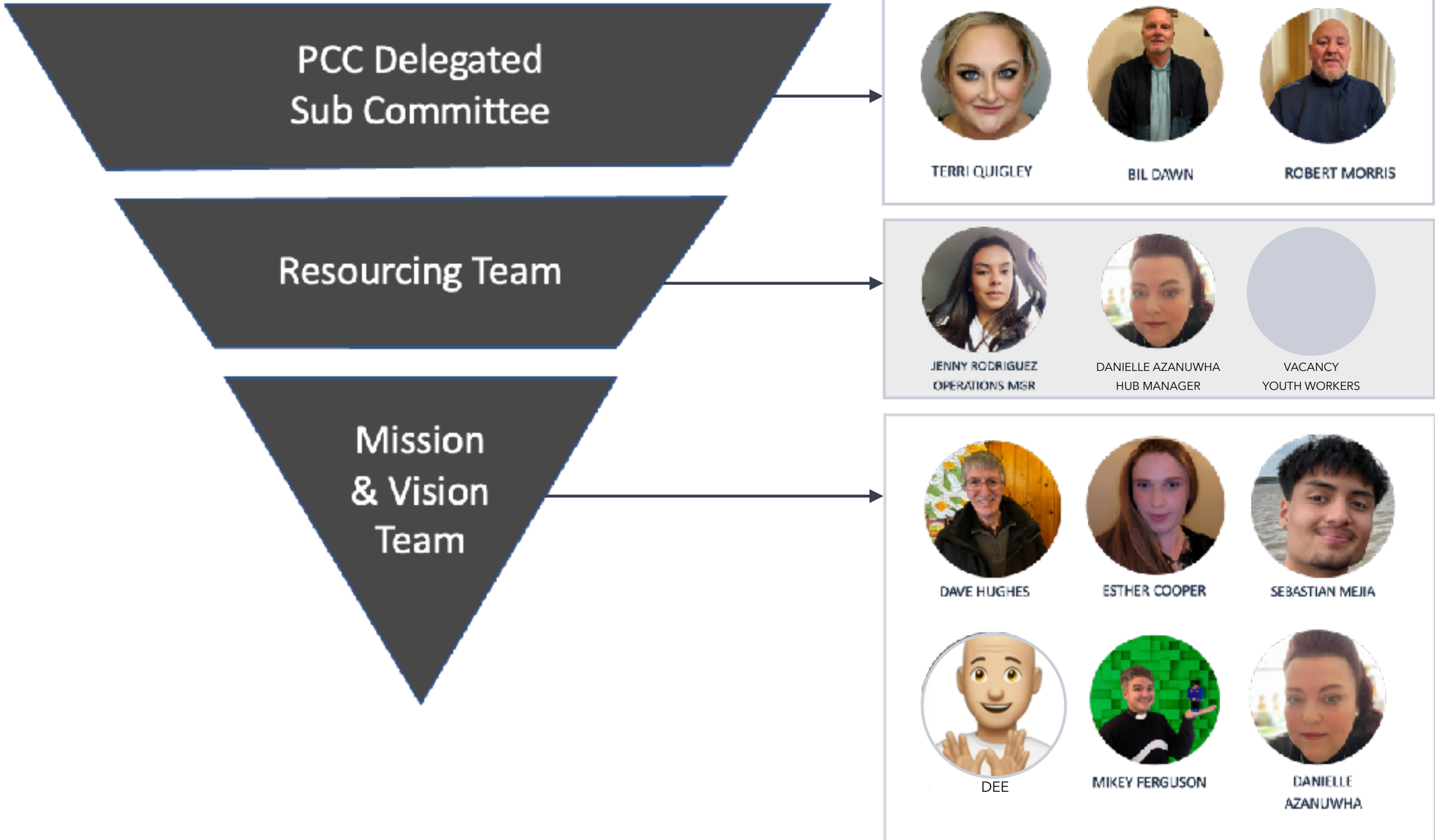
Numerous diverse **Worshipping Communities**, operating in existing and new spaces, together, will make up the Church in Everton

Each Worship Community will be led by a leadership team made up of local Christians or staff, supported by the clergy and a Central Hub.

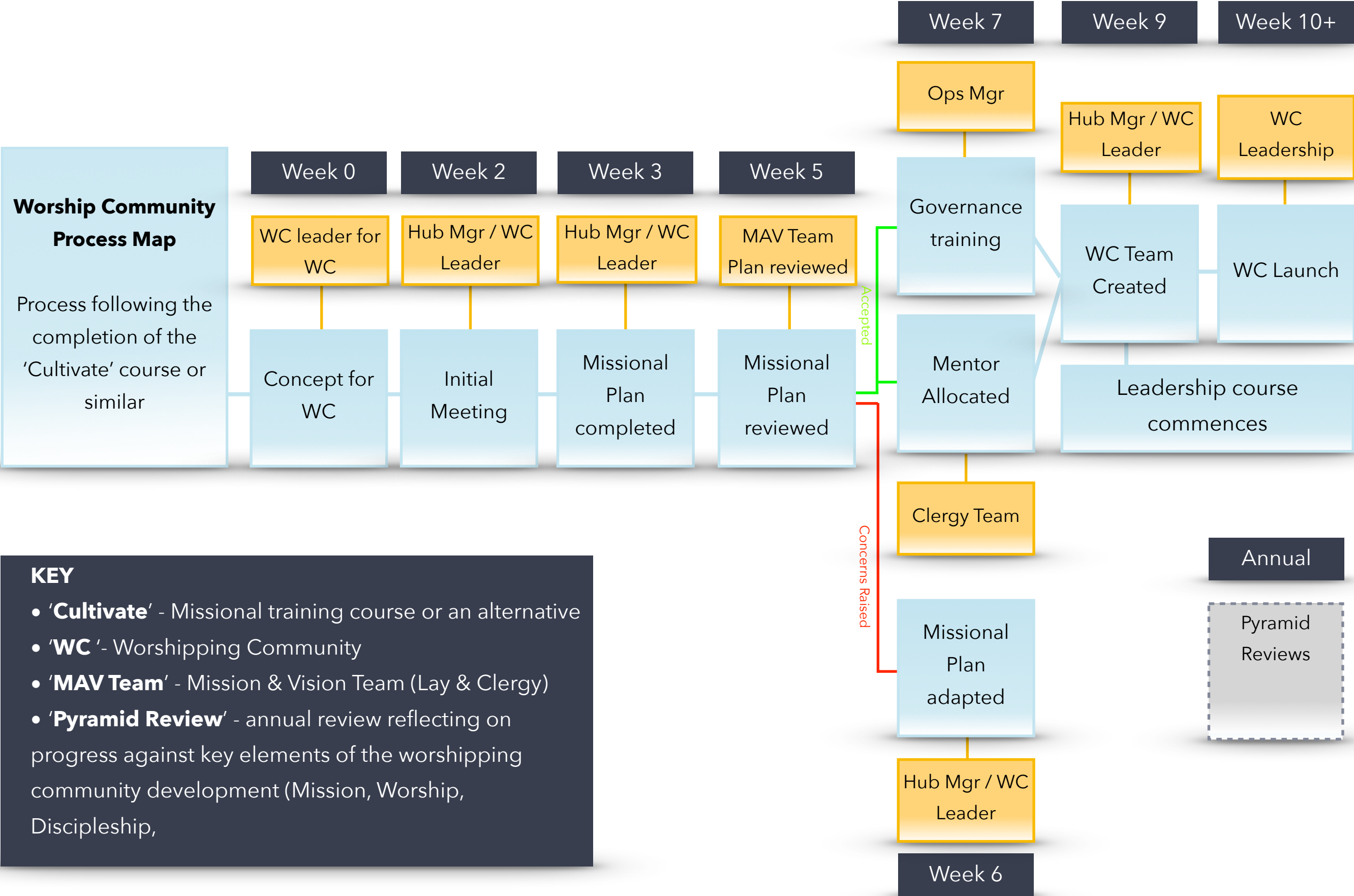


Full details of the proposal are available in *The Generations Project Proposition*

'THE CENTRAL HUB'



'WORSHIP COMMUNITY DEVELOPMENT PROCESS'



'WORSHIP COMMUNITIES'

Q4 2024



International Community

Jenny

*Creating a support network for people new to the country based on Bible principles
Sunday evenings*



Sunday Youth Community

Ester

*Providing a safe environment for young people to explore the Christian faith
Sunday evenings*



New Wednesday Communion

Dave

*Communion, fellowship and food for the old guard
Wednesday 11am-1pm*

Q1 2025



Inquiring Minds

Mark

*Deep questions of theology, philosophy, science and social issues relating to the Bible and Christian Life
Friday evenings in the pub*



Breaking Bread

Dee

Encamp with the marginalised/disaffected, breaking bread together and actively celebrating difference through scripture and actions



SEND Community

Danielle

*Opportunity to encounter Jesus whilst specific needs are accommodated in a fun space
Tuesdays/Thursdays 4pm to 5.30pm*



Metal Community

Mikey

*Creating space for young musicians to worship freely in a style they are most comfortable
Thursday evenings*



Youth Worship Community

Mikey

*Music focussed celebration with fun and community at it's heart
Friday evenings*



St George's & St Peter's

Readers

The two existing traditional Sunday morning congregations to transition to the WC model

Q2 2025

Next Cultivate course



School Community

Debbie

*A new worship community within a local primary school (Faith or Beacon School)
After School*



Young Parent Community

TBC

*A worshipping community linked into the Kids Matter parenting classes
Evening*



Sports Community

TBC

*A worshipping community linked into the new sports outreach planned
After School*



Worshipping Community launched



Worshipping Community in preparation



Aspirational Worshipping Community identified. Need to raise up leaders or buy in resource to establish communities initially

OUR LEADER

'Go out and train everyone you meet, far and near, in this way of life, marking them by baptism in the threefold name: Father, Son, and Holy Spirit.'

Matthew 28.19 MSG

WHO YOU ARE

We are now looking for a priest to lead this project as it grows and develops from these foundations.

You will be an experienced priest, a skilled mentor, a natural evangelist, and a caring pastor.

You will be someone who has the capacity to hold the vision for further growth and planting, whilst the individual leadership teams focus on the detail of growing their new communities.

You will be someone who is excited to oversee and lead this project as it pioneers a new, networked way of being 'resource church', focused on dispersed growth.

You'll be someone who is energised by helping others to identify opportunities to plant, rather than feeling the need to be personally involved in each opportunity; relishing the opportunity to support, mentor, train and trouble-shoot.

However the most important of these is your experience and skill as a mentor, and as someone who can hold and inspire the team around the overall vision.

THE ROLE

RESPONSIBILITIES

Working as part of a clergy and lay team:

- Being fundamental to identifying and bringing to life new worshipping communities through raising up local leadership teams.
- Mentoring the worshipping community leadership teams and working with the Resourcing Team to ensure they have the appropriate training, development, resources and support they need to grow their communities
- Gathering the worship community leaders for their personal spiritual growth and community.
- Lead the Mission & Vision team - responsible for driving and sustaining missional change plus holding the diverse communities together with a common vision and identity
- Bringing together all of the diverse the worshipping communities in an occasional contextual act of worship and communion - 'unity gatherings'.
- Being a key part of the leadership team of the existing St George's worshipping community.
- Have a visible presence in the community through involvement in community outreach and action and ecumenical activities.

CURRENT RHYTHMS

Traditionally we have Sunday services at 9am and 11am.

Our 9am Sunday service appeals to an adult congregation, being more traditional with time for prayer and quiet reflection.

At 11am things get a more informal and lively, with a mix of All Age Worship services, Morning Worship and Holy Communion, with provisions for our younger members.

Kids Church runs regularly during 11am services for children aged 5yrs & above, where the young people go off-site to the Beacon School for games, action songs, scripture and crafts.

We run Explore Groups during the week and hold standalone courses in the year like Alpha and the Start course. We have connections with New Wine and we hold an annual church Big Day Out each summer.



OUR CHURCH

“Definitely not a ‘high’ church.
Love that tots are free to run up
and down and no-one minds”

'OUR OUTREACH'

St George's Pantry

Providing local community access to affordable food, the Pantry opens every Friday led our dedicated volunteers.



Youth Group

Youth Group runs on a Sunday evening in partnership with Christchurch, Anfield.

Other current youth activities include: the annual Light Party, a Christmas nativity with community Christmas meal, Easter egg hunts and games nights.



'FAMILY FEEL, WITH PEOPLE OF ALL AGES AND STAGES OF LIFE'



Heritage history tours



Big Day Out

'A DIVERSE CHURCH'

Diversity of age, experience, and background

OUR BUILDING

THE CAST IRON CHURCH

St George's Church is in the centre of the parish. Built on the Everton plateau, the highest point in Liverpool, the site affords spectacular views even to Blackpool on a clear day.

The church building, completed in 1814, is a Grade I listed building, said to be the world's first cast iron church. The use of thin cast iron columns instead of heavy stone pillars gives the interior an exceptionally light and airy appearance, giving the congregation unobstructed views of the altar and front of church from anywhere in the nave of the building.

<https://www.iron-church.com>

Being a Grade I listed building has the advantage of attracting generous grants from Heritage England for major repairs, including the rewiring and the replacement of the main roof.

A perfect location for the Occasional offices. Seating is available for up to 150 worshippers and there are two galleries upstairs, currently not used. A smaller meeting room, kitchen, toilets and office are incorporated within the building.



Vicarage
Option 1

BNENC

North Liverpool
Academy
High School

St John
Chrysostom
Church

Everton Park



**St George's
Church**

Vicarage
Option 2

The Albion

Beacon C of E
Primary School

St Peter's
Church



North Liverpool Academy

Everton Park

Beacon C of E
Primary School

St George's Church

Vicarage

Everton Park

WHERE WILL HOME BE?



**WANT TO
KNOW
MORE?**

CONTACTS

Key members of the Church, who are happy to be contacted to talk about any aspect of our church community:

Ann Evans

Vice Chair & Reader
annevans45@gmail.com

Bill Dawn

Warden
dawnies.9@blueyonder.co.uk

Rob Morris

Warden
robmogs57@gmail.com

For details on church finances and operations enquires:

Jenny Rodriguez

Operations Manager
churchoperationsgp@gmail.com

For details about the SDF Investment and Generations Project:

Clare Bedford

Missing Generations Project Manager
clare.bedford@liverpool.anglican.org

Rev'd Mikey Ferguson

Rector of St Peter's with St John Chrysostom
reverendmikeyferguson@gmail.com



View from Everton over Liverpool Bay