

## House for Duty

### Holy Trinity Church Lyne & Longcross, Surrey

[www.lyneparish.org.uk](http://www.lyneparish.org.uk)



#### **Is God calling you here?**

Holy Trinity is a beautiful, friendly, rural Church full of potential and grounded in tradition. It is nestled between a very popular Church of England Primary School next door one side and a vicarage with stretch of woodland belonging to the Church the other side.

We are looking for a friendly people-person with the energy, vision and faith to revitalise this growing parish. We require someone who loves God and who is able to connect with all age groups. The post focuses on one Church, Holy Trinity, Lyne which is in a benefice with St Peter's Church Chertsey.

You would be primarily based at Holy Trinity, in Lyne, and take responsibility for leading the small but dedicated congregation, the running of the parish, it's services and outreach. At the same time, you will be a part of a lovely, supportive wider team, line managed by one of St Peter's vicars and with the missional and personnel backing of St Peter's Chertsey and Runnymede Deanery who long to see Holy Trinity grow and flourish. You will be able to discern, with the full support of St Peters, whether to integrate Holy Trinity further into the life of St Peters, or whether it eventually becomes a parish in its own right.

Holy Trinity is central in churchmanship, and values traditional, eucharistic worship. We are looking for someone committed to Word and Spirit ministry who feels called to revitalise this beautiful parish, to respect its tradition and breathe new life. You should have a heart for sharing the Good News and an openness to fresh expressions of Church but also value eucharistic tradition.

You will be a part of the Chertsey Benefice along with St Peter's Church in Chertsey. St Peter's is a friendly and welcoming Church in the charismatic evangelical tradition with a 9am liturgical service

and 10.30 informal service. Revs Anne & Phil Richardson have recently been appointed joint vicars there, and Anne Richardson would be your point person as the Priest in Charge.

## **Deanery**

In the small, supportive, and diverse Deanery of Runnymede, in the Archdeaconry of Dorking, in the Diocese of Guildford. There are several other Churches in a comparable situation to Lyne in the deanery and you will find supportive colleagues.

### **A note from Rev Canon Ben Beecroft, Area Dean**

Runnymede Deanery consists of nine Parishes covering the borough of Runnymede. There are also three chaplaincies: at St Peter's Hospital, Royal Holloway, University of London and a Youth Catalyst for the deanery based at Jubilee High School.

We enjoy significant unity across the deanery, notwithstanding our distinctiveness and diversity, evidenced by many clergy covering for each other to enable holidays, rest, EMDL etc. Support is also offered through the award of modest grants from our Deanery Growth Fund, specifically designed to especially help the churches with less means get missional projects off the ground. We are also committed to our link diocese of Kebbi in Nigeria, supporting in prayer and finance and receiving visitations when possible.

Our vision as a Deanery is to work even more closely together, to be more supportive of each other, to work together especially in mission and to improve partnerships among clergy and lay leaders. We aim to work collaboratively and to share resources and ministry where possible for the benefit of the whole community of Runnymede. One recent example was the appointment of a School's Catalyst for Jubilee High School, but serving to equip and empower youth ministry across the entire deanery and all of their respective groups.

There is a monthly Chapter meeting for clergy when we meet for a pub lunch or share hosting and extended time of spiritual refreshment and prayer with a short time for 'business' matters. We also try to take a Chapter Retreat/ Quiet Day together each year. There are three Deanery synod meetings per year, which are open to all parishioners with a speaker, covering themes that the parishes have themselves identified. Each parish is invited to nominate a member (clergy or lay) to our Deanery Leadership Team.

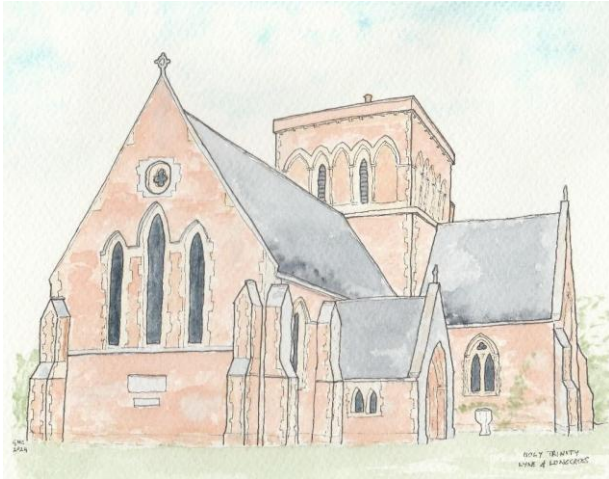
We also have many ministries shared with our ecumenical colleagues e.g. foodbanks, Christians Against Poverty centres and East to West (working with young people).

The deanery offers you a supportive, prayerful and collaborative Chapter and an engaged and forward-thinking deanery.

### **A note from Rev Simon Vibert, Christ Church Virginia Water**

Christ Church Virginia Water is a larger neighbouring parish to the west (a congregation of about 200 adults and 50 children; Vicar Rev Dr Simon Vibert). The Wentworth Estate and Golf Club is within the parish, although congregation members largely come for the more residential area, "Trumps Green." We have 27 nationalities in the congregation, many of whom travel from outside the parish. Since then, closure of Christ Church Longcross, the growing community within the Crest Nicolson Longcross Garden Village has been amalgamated into Christ Church Parish. In addition to the residential housing, there is also Longcross Studios and the train station.

A number of our congregation happily send their children to the Church of England School in Lyne, and we are happy to support in various ways: occasional clergy cover, input into the school's work, and encouraging families to be involved in the parish as they are able.



## Congregation

Holy Trinity has a weekly traditional Service of Holy Communion at 10.45 am with a robed choir. Until last year it also ran 'Trinity Praise' informal family-friendly gathering at 9.30 am.

The congregation are incredibly welcoming, supportive and committed with around 20 people attending weekly, including one teenager. Numbers have dropped significantly since Covid and after the last vicar retired in July 2025. During the winter months the Holy Communion service moves to the cosier parish rooms although we have struggled to fit recently.

A large percentage of those who attend Holy Trinity do not live in the parish but are attracted by the friendly village feel and traditional style of worship. The surrounding Churches tend to offer more contemporary, evangelical and charismatic services.

We are looking for someone who will keep the traditional service as well as introducing fresh expressions of worship to encourage a wider age range to engage with faith.

Services are currently covered predominantly by the clergy team at St Peter's Chertsey with the wider deanery covering once a month.

	<b>2023</b>	<b>2024</b>	<b>2025</b>
Electoral roll	55	55	40
Baptisms	0	0	0
Weddings	8	4	5
Funerals	12	11	4



The wonderful Holy Trinity team includes...

- Luisa, administrator dedicated solely to Holy Trinity (7 hours a week.)
- Gerald Wilson and Barbara Payne, our fabulous Churchwardens. (Barbara is also Safeguarding Lead and School Governor.)
- James our talented Organist and Choirmaster.
- Dom our helpful Treasurer.
- Judy our lovely Mothers' Union Leader.
- Linda runs an active fundraising team running monthly social events.
- Our well-functioning, experienced and supportive PCC (pictured above, meets six times a year.)

### **Church of England School**



We look to continue to improve and invest in the good relationship between the Church and school. The school has its own gate so they can access the Church without walking along the road and we have started to host more of the schools' special assemblies and events. We are launching a school prayer space at Pentecost.

Barbara Payne, one of the Holy Trinity churchwardens, is a governor at Lyne and Longcross CofE, as are two members of St Peter's Church. You would also be a school governor as part of this role.

### ***A note from the Headteacher Mr Chris Haxell***

*Lyne and Longcross CofE (A) Primary School and Nursery is a lovely single form entry primary school and nursery set in the heart of Lyne Village. We are excited for the appointment of a new incumbent and the relationship between the school and church that will flourish as a result. We are looking forward to meeting someone who is passionate about giving children opportunities to explore and experience their faith, and for those of no faith to gain a greater awareness and appreciation of the church and Christianity. The school is excited to welcome someone who will think creatively and openly about how the relationship between school and church can be nurtured to afford children regular opportunities to engage with and opportunities to have an impact on the community as a whole. As a school we are very open to developing a true partnership that helps strengthen the unique Christian character of the school for the betterment of all, and hope that the new incumbent shares this enthusiasm for having impact on the lives of the children and the wider community.*

### **Vision**

#### *Our Identity*

Holy Trinity Lyne and Longcross is a family Church that **worships** God, **cares** for each other, **supports** the wider community and **welcomes** all.

#### *Our Values*

We seek to become a more praying, welcoming, caring and loving Church.

#### *Our Purpose*

We exist to encounter God and experience His love and transformation.

#### *Our Mission Priorities*

- Ministry among children.
- Commitment to older people.
- Developing our relationship with the school.
- Growing our spiritual life together.
- Furthering our relationship with others.

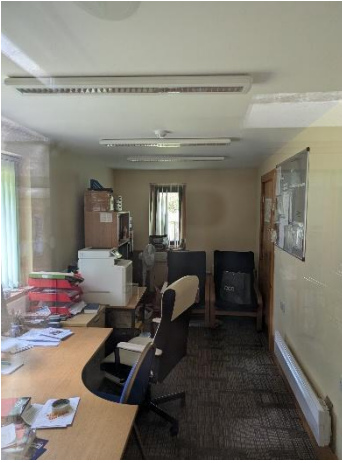


### **Missional Opportunities**

- Very popular Church of England School next door, with ongoing support from Virginia Water and Chertsey's Children's Workers. (Children's worker from Virginia Water does weekly school assemblies, St Peter's team do Open the Book.)
- Woodland belonging to Church with potential for Sunday Forest School / Muddy Church etc.
- New homes being built and more housing planned.
- Retirement Village.
- St Peter's Hospital nearby.
- Lyne community is active with a busy community hall. The Church has a good reputation in the local community and is involved in the annual village fete.
- Holy Trinity has unusual Victorian box pews. (Call the Midwife has been filmed here.)
- The Church has excellent facilities with a kitchen, toilets, office and community room.
- Beautiful and peaceful graveyard.
- Potential to open up the building for retreats.
- Good parking and great accessibility.
- Large traveller community.

### **Vision for the post**

- To see new people coming to faith.
- To reach out to the missing generations.
- To help the existing congregation share their faith and to grow in discipleship.



## **Finances**

We rely on our faithful God to provide everything needed to further His Kingdom. We have a generous small group of members who give regularly and an active fundraising team who secured £2000 and a further £3500 from our share of the Lyne Village fair proceeds.

The fundraising team have done a brilliant job, and a very generous legacy has put Holy Trinity in a stable financial position. Part of this role will be to shore up finances, and there are a number of further fundraising avenues to pursue.

We have adopted the Expense Plus software, use the Parish Giving Scheme and we can take gifts via a tap-and-go terminal in the Church.

We are fully up to date with our Parish Share commitment and have no outstanding creditors or debtors.

**Finances for 2025 (ACTUAL)**

INCOME	£
Voluntary income	85,832*
Church activities	8,239
Investments	1,245
<b>TOTAL INCOME</b>	<b>95,316</b>
EXPENDITURE	
Outward giving	4,300
Parish Share	27,811
Upkeep of services and teaching	189
Running expenses	15,827
Church administration	4,762
<b>TOTAL EXPENDITURE</b>	<b>52,889</b>
<b>SURPLUS/(DEFICIT)</b>	<b>42,427</b>
General Fund balance	51,010
Restricted/Endowment fund balances	32,748

*\*Includes one off legacy £50k*

*NB 2026 Budget is projected to have a £20k in year deficit.*

Generosity is important to us, and we are a caring community, we giving to the Barons Court Project, East to West, Child Action Sri Lanka, and Runnymede Home Start. We also collect 'a tin a week' for the Salvation Army in Addlestone's food bank and join in with the shoe box appeal at Christmas with the school.

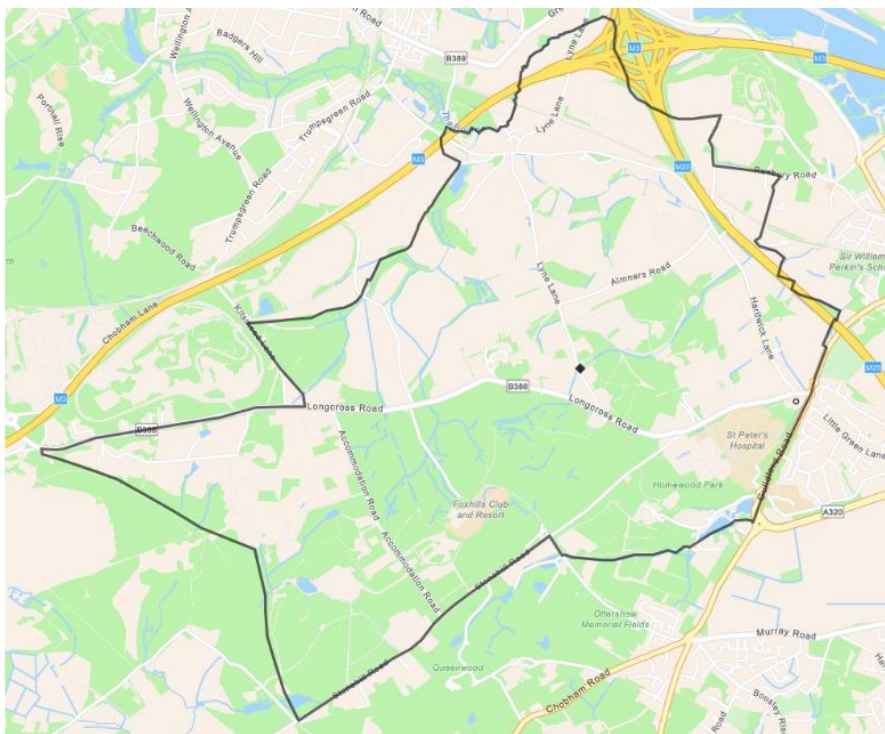


In 2023 we managed to raise £8000 to help build a house for Ramesh in Sri Lanka with Child Action. In 2024 Holy Trinity helped CAL to raise money to buy a bus to enable the children to be transported to school!

## Safeguarding

We value safeguarding highly and want to protect those God has entrusted to our care. Holy Trinity has adopted the Church of England's "Promoting a Safer Church" policy and associated guidance and protocols and is at Level 3 on the parish safeguarding dashboard. All those involved with children, young people and vulnerable adults are required to go through the Disclosure and Barring Service process.

## Location



Holy Trinity is on the edge of the pleasant village of Lyne. It was built in 1849, to serve the hamlets of Lyne and Longcross. It is a very welcoming and friendly community.

The parish is south-west of London, below the M25 and south of the M3, close to Heathrow Airport and with easy access to London from Longcross or Virginia Water station and surrounded by open countryside.

The parish boundaries have recently been redrawn. Part of Longcross (including Longcross Church, the old Garrison church now turned into flats) is in the parish of Christ Church Virginia Water but part of Longcross remains with Holy Trinity.

Lyne is a small village of about 1,600 residents, originally a hamlet owned by Chertsey Abbey, and Longcross has a population of about 1,000. 63% of residents are owner-occupiers, 15% are under 15, and 18% are over 65. The last Census shows the area as predominantly white British, and mostly Christian. Unemployment is low, with many working in local businesses, Longcross Studios, or commuting into London, but deprivation is higher than the average for the diocese. One of the largest Gypsy Roma traveller parks in the UK is located in the parish.

There are good road connections, with the M25 and M3 nearby, and Heathrow airport is close, with Gatwick a little further away. There is excellent shopping in nearby Staines, Windsor, Woking or Guildford. The local hospital, St Peter's Hospital, is a major hospital for the area, with a large A&E department.

# The Vicarage



The newly refurbished four-bedroomed vicarage in a highly sought idyllic yet well connected location. It is freshly painted throughout in neutral colours with new carpets.

Approximate Area = 205.0 sq m / 2207 sq ft  
 Garage = 18.3 sq m / 197 sq ft  
 Total = 223.3 sq m / 2404 sq ft  
 Including Limited Use Area (17.5 sq m / 188 sq ft)  
 For identification only. Not to scale.  
 © Fourwalls



## Job Description

Purpose: Revitalise Holy Trinity Church respecting its tradition whilst introducing new opportunities, especially for children and families to engage with faith. Seek opportunities to reach out into the community and share the gospel.

Accountable to: Incumbent of St Peter's Chertsey.

Hours: 2 days (or equivalent) plus Sundays each week, with 6 weeks holiday a year.

Responsible for: Ministry in Lyne & Longcross: pastoral, sacramental and missional.

Relationships:

- Benefice Clergy and Ministry Team.
- Deanery Chapter and Diocese.
- Parish Administrator, Holy Trinity.
- Church Wardens, Officers and PCC.
- Children's Worker at St Peters Chertsey and Children's Minister at Christ Church Virginia Water who provide support.
- School Head and staff at Lyne & Longcross Primary School.
- Committed Congregation.
- Local Community, including the Lyne Hall Committee.

Responsibilities:

- Prayerfully discern the Spirit's calling, developing a vision and plan to revitalise the parish of Lyne and Longcross.
- Lead and/or provision Sunday Services, currently 10.45am every week.
- Look to set up new services reaching children, families and the local community, not necessarily on Sunday mornings.
- Build closer relationships with the school and other appropriate groups being visible and playing an active part in the wider community.
- Provide opportunities for people to learn about faith and discern God's calling.
- Provide pastoral support to include occasional offices.
- Re-start children's ministry.
- Serve as a Governor at Lyne & Longcross Primary School and deliver engaging assemblies on a regular basis.
- Work collaboratively with the joint Vicars and others as we seek to follow God's will.
- Initiate and lead or facilitate small groups to build community and to build faith wherever you discern this is practicable.
- Flourish in God's love maintaining a healthy approach to your own well-being.



If you would like an informal conversation about this post please contact Rev Anne Richardson, Priest in Charge of Chertsey, Lyne and Longcross who would love to hear from you. Email: [anne.richardson@stpeterschertsey.org.uk](mailto:anne.richardson@stpeterschertsey.org.uk), Mobile: 07835730088.