

Parish Profile Church of St Peter & St Paul Ewhurst & Ellens Green



From the Area Dean



The hall was so packed on a dark, filthy, wet, winter's afternoon that more tables and chairs had to be laid out. All those gathered wanted to have a say in their new Priest-in-Charge. Here is a community longing to be loved and to share their life with someone who will give them a fresh start and renewed hope.

Ewhurst is a unique semi-rural community, in a beautiful setting, where the boundaries between church and village community are wonderfully blurred. Recent pastoral reorganisation has created a more focussed village parish, and we are seeking and praying for a House for Duty Priest-in-Charge who will work with the faithful people in leading and shaping the next chapter.

Are you the person called to walk with the people of Ewhurst into this next season? We pray that it might be so – they could be your people; this could be your place. If you'd value an informal conversation about this post, please do not hesitate to be in touch with me at revsarah@parishofshere.com

Revd Sarah Hutton
Area Dean of Cranleigh

From the Bishop of Guildford



The Diocese of Guildford is a warm and friendly place to be, with a strong cohort of gifted and committed laity and clergy, some excellent church schools, and plenty of beautiful countryside to enjoy on a day off! Our vision as a diocese is to see lives and communities transformed through the love of Christ; and, to that end, we have refreshed and simplified our Diocesan strategy, Transforming Church, Transforming Lives, with a particular focus on Growing Disciples, Growing Diversity and Growing Community.

Although we have made a steady recovery since the pandemic, there has been a considerable decline in the number of children engaged in our worshipping communities; and we recognise the need to embrace a mixed ecology in all our parishes and to renew our commitment to becoming a diverse and inter-generational church. Congregations want to 'grow younger' in theory but in practice can be reluctant to embrace the sacrifice involved in passing on the baton of faith to younger generations.

Vocation is another key theme in the diocese right now, and here we have been much encouraged by a considerable growth in vocations for lay and ordained ministries through the broadening scope of our Local Ministry Programme, recently renamed the College of St. Martha. This has sought to raise up a new cohort of confident, theologically-articulate assistant ministers in many of our parishes to support our incumbents and lead fresh initiatives, especially in the areas of discipleship and evangelism.

Our team of Mission Enablers is committed to working with every parish in fleshing out its vision in an appropriate way, going with the grain of the church's history and tradition, whilst equally suggesting new approaches to 'proclaiming the gospel afresh in each generation'. This is just one of a number of ways in which we aim to support our clergy; and newcomers to the diocese regularly speak favourably of the welcome they receive and the strong sense of mutual interdependence – 'us and us' rather than 'them and us' – between the parishes and the support services at Church House Guildford.

We are therefore looking for clergy with a proven ability - or at least the clearest potential - in leading change, fostering a vocational culture and growing the church younger, so that our vision of Transforming Church, Transforming Lives might be more fully realised.

Do please put in an application if that might be you!

Every blessing,

+Andrew

The Rt Revd Andrew Watson

From the Churchwardens

Welcome to our Parish of Ewhurst and Ellens Green, in the beautiful setting of the Surrey Hills. We are delighted that you are considering coming to our rural parish. Our church plays a key role within our local community, and you will be assured of a very warm welcome from our friendly congregation and parishioners.

Please do not hesitate to get in touch if you would like to visit us or have an informal conversation about the role. We can be contacted via the church office on ewhurstchurch@gmail.com

We look forward to hearing from you.

With our very best wishes,

Liz Tingley and Martin Lockwood, Churchwardens



“Parishioners Voice”

- ▶ Parishioners have expressed a strong desire for a Priest-in-Charge who offers spiritually mature and enthusiastic leadership, with a pastoral heart and a visible presence in parish life. Key qualities include a commitment to pastoral visiting, empathy, and a person who enjoys being with people whether old or young.
- ▶ There is a clear call for someone who is welcoming and inclusive, interested in people, and willing to lead gently. There is a desire that the new Priest-in-Charge should actively encourage engagement with families and foster close relationships with the infant school and preschool groups. A creative, pastoral approach is desired together with a passion for placing the church at the heart of the community. Parishioners hope for a leader who will help grow the church family, deepen connections across the community and unite the parish under a shared vision for reaching out into God’s world with his love.

We are seeking and praying for a Priest-in-Charge to lead and shape our future.

We need someone who:

- ▶ can share their faith easily and can help us to do so too
- ▶ values traditional worship yet enjoys experimenting with other worship styles
- ▶ loves spending time with people of all ages and stages
- ▶ will help draw the whole church community closer together
- ▶ will identify the resources we have and develop a fresh vision for our Christian community
- ▶ enjoys and understands rural parish life

They will need to focus on:

- ▶ leading ministry and pastoral teams
- ▶ creating a workable, lively service pattern which grows lay leadership
- ▶ developing links with families and children, particularly with our C of E school
- ▶ building on existing local relationships

The position will be under Common Tenure, based upon working Sundays, plus two other days per week.



The Parish of Ewhurst and Ellens Green Context

The Parish

Thank you for your interest in the vacancy for the House for Duty Priest-in-Charge of our Parish of Ewhurst and Ellens Green. This is an exciting time in the history of our church, and we are looking for a leader with vision to build on the foundations and strengths that our communities bring together.

In June 2025, we underwent pastoral change to become our own parish of Ewhurst and Ellens Green. It brings together both communities nestled at the foot of the glorious Surrey Hills. We are looking for a Priest-in-Charge to serve the communities of Ewhurst and Ellens Green with upwards of 3,500 residents.

Ellens Green is a small rural hamlet of a few hundred inhabitants and is just a few miles south of Ewhurst, on the West Sussex border. Ellens Green Memorial Hall is a delightful amenity.

We want to grow in spirit and in numbers. We already have strong relationships within our local communities and want to extend and develop our partnerships with local organisations, particularly other churches, care homes, schools, nurseries, clubs and societies. Many church members are involved in local thriving societies such as the WI, History and Horticultural societies, and the Church Hospitality Group.

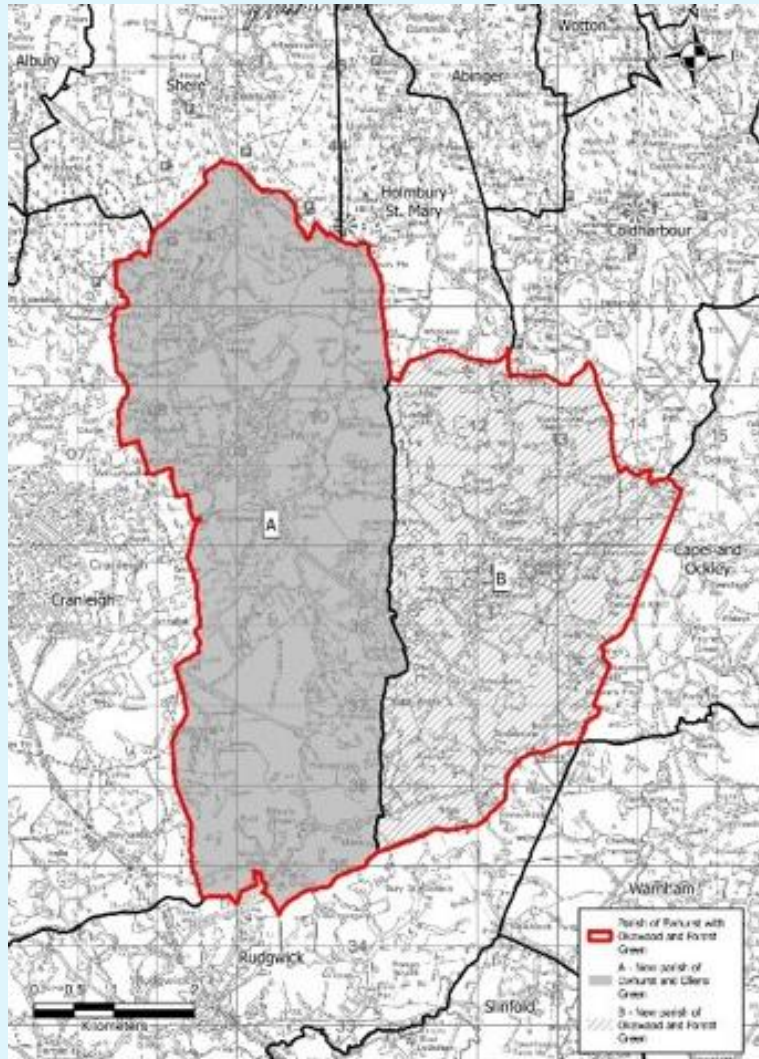
The Local Area

If you love the countryside you will love being in Ewhurst!

Geographically, all communities in the Parish enjoy wonderful countryside with our proximity to the Surrey Hills Area of Outstanding Natural Beauty.

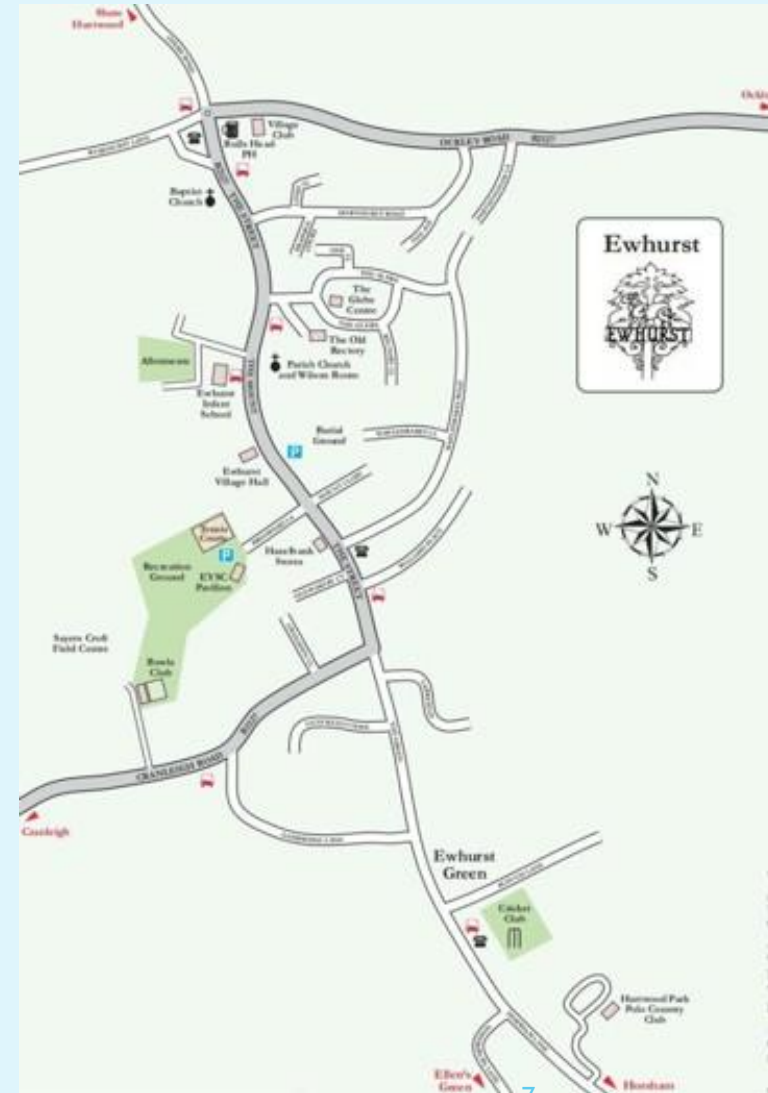
The miles of footpaths and bridleways are perfect for outdoor pursuits, especially cycling, walking and horse-riding. The area has many attractive villages and excellent amenities available – whether for shopping, dining or culture. Ewhurst is a large village with good access to the market village of Cranleigh and the University town of Guildford, with good rail access to London and an excellent range of educational facilities from nursery and pre-school through to secondary education, both state and private. There has been significant new housing built in Ewhurst over the past ten years.

Parish of Ewhurst and Ellens Green



Map data from Ordnance Survey. Reproduced by permission of Ordnance Survey on behalf of HMSO. Crown copyright and database right 2024. All rights reserved. Ordnance Survey Licence number 100019919

Ewhurst Village Plan



Our Worship

Our worship is mainly traditional, but we are open to new ways of worship and outreach. This is our current service pattern:

1 st Sunday	2 nd Sunday	3 rd Sunday	4 th Sunday	5 th Sunday
10.30am Holy Communion Common Worship	9am BCP Holy Communion 6pm Choral Evensong	10.30am Holy Communion Common Worship	9am BCP Holy Communion	9am BCP Holy Communion



Special Services

These include:

- A monthly communion service at the Old Rectory Care Home.
- All Souls Service. A beautiful service of remembrance.
- Christingle. An inspiring candle-lit celebration with the school.
- Carols round the Crib. A special Christmas Eve service. Children perform the nativity story.
- Nativity Trail. Adults and children explore the different characters of the Christmas story around the church
- Mothering Sunday. We give the ladies of the village community hand-tied posies
- Palm Sunday. Donkey Walk which is a joint service with the Baptist Church.
- Good Friday Walk of Witness. Also joint with the Baptist church - a cross is carried around the village as the story of the Passion is told.
- Easter Sunrise on Pitch Hill. As the Easter Dawn breaks, at the local high point of the area, a joint service with the Baptist Church is held.
- Summer Songs of Praise. In the grounds of the Old Rectory Nursing Home gardens.



The Choir

- ▶ Our small but dedicated choir leads the singing at each Common Worship service and Choral Evensong, They also participate in special services and at the Summer Songs of Praise in the Old Rectory garden, organized and arranged by Val Henry, our Director of Music. They also sing at Weddings and Funerals and special events, and then at Christmas time sing carols around the village. They rehearse every Friday evening in church during term time.



Val Henry
Director of Music



Church Bells and Ringers

There is a long tradition of bell ringing in Ewhurst. The oldest bells date from the 15th Century and are probably amongst the oldest in Surrey. Bells are rung every Sunday and by special request. Bell ringing practice is every Wednesday evening with new youngsters joining in. Hand bell sessions are also a highlight of the Advent services. Ewhurst is proud to have a peal of 8 bells.



Our Buildings

▶ St Peter and St Paul Church Building

The Church is a Grade 1 listed building. It has stood at the heart of our village both as a building and part of the community for around nine centuries. The oldest surviving walls of the Norman nave date back to 1140 making it one of the oldest churches in Surrey. Its peace and charm make it a popular choice for weddings and for other celebrations. There are services each Sunday of different styles to meet the needs of our worshippers, young and old. The south transept contains an area for children with books and bags of toys.

▶ The Wilson Room

We have the fabulous resource of The Wilson room which is a welcoming and a popular social area especially for refreshments served after services. The church room was built in 2010 in the churchyard and has easy access from the church and rectory. It has a beautiful oak-beamed, large communal room, a fully equipped servery, disabled toilets and is home to the Parish Office. This has allowed the church to broaden its ministry with a range of activities and groups including our Toddler group, social events, and meetings. Opportunities for use abound.

The Rectory

A great family home set in a large garden.

Accommodation for the new incumbent is Ewhurst Rectory, situated next to the church, in the centre of the village. Double glazing is provided throughout and there is full gas-fired central heating. It provides, on the first floor, a large landing giving access to four double bedrooms, bathroom with shower, a separate WC and airing cupboard. Fitted cupboards are provided in three of the bedrooms and two bedrooms have a wash hand basin. On the ground floor there is a central entrance hall, good-sized living room, dining room, fully fitted kitchen, utility room with its own sink and internal access to an attached garage. An outer hall gives access to study and WC. In front of the house is a tarmac area for parking, with a side area reserved for church disabled parking. The large garden is mainly grass, with a woodland area and includes a long zip-wire.



Parish Organisation

- ▶ The Priest-in-Charge will be integral to developing an exciting future for all the communities represented in the Parish. The Church is well served by experienced Churchwardens. During the Vacancy, Rosemary, a local priest with PTO, has been leading our worship.
- ▶ Martin Smith provides part-time admin support for two half days a week and is based in the Parish Office located in the Wilson Room office.



Revd Rosemary Mason

Church Communications

- ▶ The Weekly pew sheet is also published on the website and Facebook and e-mailed to 150 addresses. Our website is www.ewhurstchurch.org and “A Church Near You”
- ▶ You can also find us on Facebook [here](#)

Small Groups

This is an area which needs attention if we are to grow in our faith as individuals and as a Christian community. Our PTO Rosemary has kept us going by running Lent Groups and a successful Confirmation Group which 4 people attended a couple of years ago. We look forward to more ways to grow in our discipleship.



**Martin Smith,
Parish administrator**

Our Local Community

Community Links

We have strong links with our local Church Infants School and Rainbows End Pre-School. There is a long-standing partnership with the Baptist Church, with whom we hold a weekly joint coffee morning at the Glebe Centre which is open to all. There is also a very close relationship with the Old Rectory Nursing Home, adjacent to the church. A monthly communion takes place at the Old Rectory which residents regularly attend when able to do so.

Ewhurst C of E Infant School

Our parish is blessed to have Ewhurst Church of England Infant School, a successful voluntary aided school. Located exactly opposite the church, currently there are 48 pupils with the expectation it will grow. This is an exciting opportunity for us as a church and village community. On the latest Ofsted report the school is graded 'Good'.

Weekly collective worship is taken in the school by local clergy. At least once a term, usually around festivals, the children, together with their parents are welcomed into the church

“Our relationship with the local parish church is fundamental to the identity and heartbeat of our school community, rooting our vision in shared Christian values. Working hand-in-hand with our Priest is vital to enriching our pupils' spiritual development, whether through collective worship, faith exploration, or deepening our theological foundations. We seek a compassionate leader who will enthusiastically embrace and nurture this essential partnership, ensuring the continued flourishing of both our church and our school”

Tim Cheesman, Executive Headteacher, Ewhurst C of E (VA) Infant School

STOP PRESS
Ewhurst C of E
Infant School
to become Primary
for children of age 4
years to 11 years
from September 2026

Rainbows Pre School

“Rainbow's End is an Outstanding setting providing pre-school education for children aged 2-4. We have a long-standing relationship with the church and often bring the children to see it, noticing how things change at different times of the year, both inside and outside. The children love to sit in the pews and sing and will join in short services. A representative of the church is always invited to our Easter, Harvest and Christmas services which we hold in the village hall. Many of the children go on to attend the local village school or schools in Cranleigh and continue to develop their positive relationships with the church which have begun at pre-school.”

Gill Neal. Deputy Manager, Forest School Lead

Duke of Kent School

- ▶ The Duke of Kent School is also in our parish. It is a mixed Independent school on Pitch Hill to the North of the village, catering for 4 to 16-year old pupils. There are historic links with us but none currently.



Ewhurst Baptist Church

We enjoy several joint acts of worship with the Baptist church through the year.



"I have loved my four years here. A major highlight is the excellent relationship we share with the congregation of St Peter and St Paul. We find real joy in the times we serve together. We are excited by the prospect of building on our already strong foundation and sharing our vision of serving our local community and reaching out with God's story to those around us, in creative ways."

Ewhurst Baptist Pastor Ben.

Outreach Events

- ▶ Each year the Friends of Ewhurst Church charity holds several events involving the village and the wider area to raise capital funds. These include the bi-annual Family Day Out event held in July at the local Sayers Croft Rural Centre. The Annual Easter Market is held at the Parrot Inn in Forest Green and a bi-annual fund-raising dinner with entertainment is held in the village hall.
- ▶ **Weekly coffee mornings** held in the nearby Glebe Community Centre, a very welcome morning of fellowship together
- ▶ **Winter warmer lunches** are held in the Wilson room, where we also hold our Harvest lunch and our Lent lunches
- ▶ **The Listening Lounge**, held on the first Saturday of each month in the Wilson room where a small group come together to listen to chosen tracks of music, and enjoy light refreshments.
- ▶ Our annual **Church Fete** is held in the churchyard on the Heritage weekend in September with a barbecue provided by the Village Club and refreshment stalls with the focus on fun.



Group Visits

We have regular visiting groups of children from the Sayers Croft Rural Centre who come on guided tours of the church and our bell tower.



Our Village Amenities

Include:

- ▶ Hazelbank Country stores, Ewhurst Village Club, Sayers Croft, a large recreation ground with sport pitches and children's dedicated play area, Ewhurst youth sports centre, junior cricket team, bowls club, The Ewhurst Players (our amateur dramatic group), Ladies Stoolball, tennis courts, Village hall, Eden hairdressers, Rainbows pre-school, the WI, Cricket Club on the green, senior and junior football teams, and the Hurtwood Park Polo Club with its extensive grounds and rebuilt clubhouse.
- ▶ **The Bulls Head**
- ▶ **Sayers Croft Outdoor Learning centre**, on the edge of our village
- ▶ **Ewhurst Cricket Club**, on the Green



Parish Data and Finance

Number of Baptisms, Weddings and Funerals including Cremations:

Year	Baptisms	Weddings	Funerals
2025	4	1	6

- ▶ Average Sunday attendance: Adults 25 - 30
- ▶ Maintaining our church is challenging in the current climate. Planned giving meets all general expenditure. Our plan, when the new Priest-in-Charge arrives, is to attract more planned giving to further develop our ministries.
- ▶ Expenses are reimbursed in accordance with Guildford Diocese guidelines.
- ▶ [Parish of Ewhurst 2024 Signed Accounts](#)

Local Trusts

- ▶ We are blessed to have a 'Friends of St Peter and St Paul' charity, a capital fundraising group, of which the Priest-in-charge will be an ex-officio member. The PCC and the Friends seek to work closely together on ensuring our beautiful church building is fit for purpose for decades to come. There have at times been differences of opinion on the immediate priority for the church building, and our next parish priest will need to be able to lead constructive conversations and facilitate agreements between the two charities. In addition, the Ewhurst Charity and Ellen's Green Mission Hall Trust manage Trust Funds which donate annually to organizations in the parish, especially those with a social or educational focus. The Priest-in-charge has traditionally been an ex-officio trustee of these bodies.



Deanery Context

- ▶ Cranleigh Deanery is the largest geographical deanery in the diocese and the most rural. The parishes all lie within the London commuter belt which shapes their character. There is a good deal of wealth within the area but in each village greater social diversity can be found than might initially seem apparent. There are thirteen parishes, fourteen churches and a population of about 30,000, which is served by a good number of clergy and lay people. Each parish operates well within its own community and there is general goodwill towards the church throughout the area. There are a number of church schools and parish involvement in them is good.
- ▶ The Deanery Synod meets twice a year and looks at ways in which the Diocesan Vision, Transforming Church, Transforming Lives, can be developed at Deanery level. The Chapter meets regularly and is well attended with good working relationships amongst the clergy.



‘We are praying for the right person;
might this be you?’

