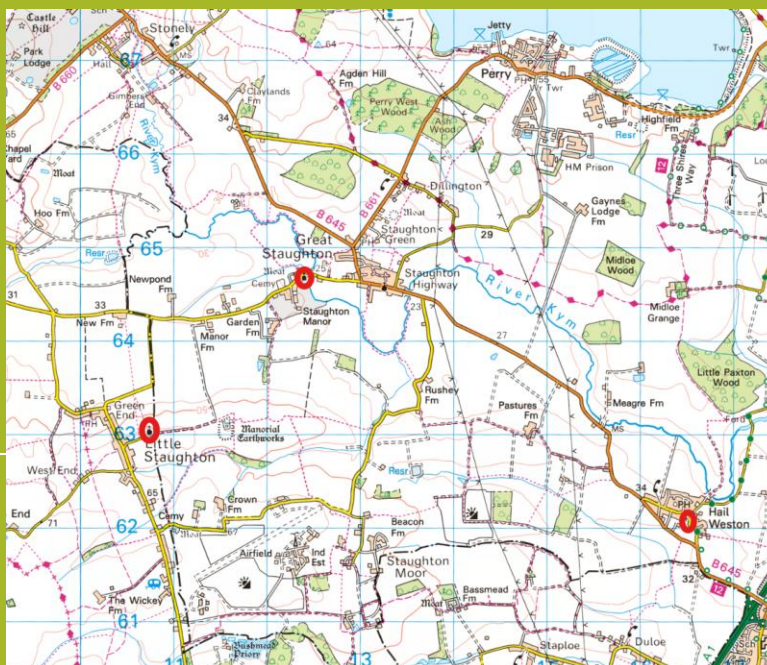


# The Staughtons with Hail Weston



## Benefice Profile

# Contents

- A Message from Bishop Dagmar
- Role Profile
- What we would like in a new Priest/Vicar
- What we can offer a new Priest/Vicar
- The Vicarage
- The Benefice
- Great Staughton St Andrew's parish profile
- Little Staughton All Saints' parish profile
- Hail Weston St Nicolas' parish profile
- Things we do well
- Things we don't do so well
- Challenges
- Finances
- In Conclusion

# A message from Bishop Dagmar, acting Bishop of Ely:

## Vicar of The Staughtons and Hail Weston (0.5 stipend)

**Thank you for taking an interest in this lovely post in the Deanery of St Neots. We are offering this post as a half stipend appointment, equating to Sundays plus 3 days.** We do not expect you to work more than that! My senior colleagues will support and work with you to ensure that this role is life giving and sustainable for you and any family you may have.

Ely Diocese has been going through a time of change and now has a new Diocesan Secretary and, soon we hope, a new Diocesan Bishop. Nonetheless our strategy is clear: we aim to support our clergy with great housing, hopeful chapters, strong investment in training and supervision, and targeted support to grow new disciples, especially among children and families, and to simplify the weight of administration that swamps clergy diaries and inboxes.



These three parishes are a perfect location to see this come together. The villages have a strong sense of identity, and the church is highly valued. There are good PCCs, with capable lay leaders. There are good relationships with local schools to build upon, and strong connections across the deanery and diocese.

We pride ourselves, as a diocese, on having a high percentage of women in incumbent posts, and we are working to grow numbers of Global Majority Heritage clergy. We are actively working to ensure that our clergy receive the best support and care that we can achieve.

We want you to thrive, to belong, to grow with us and contribute to our life together. If you would like to find out more about this post, or life in the diocese please speak to:



**Ven Richard Harlow, Archdeacon of Huntingdon & Wisbech, Tel: 07415 757527 e:**

**[archdeacon.handw@elydiocese.org](mailto:archdeacon.handw@elydiocese.org)**

**Or**

**Rev Lynda Davies, Dean of Women's Ministry, e: [revlyndadavies559@gmail.com](mailto:revlyndadavies559@gmail.com)**

# Role Profile

*"We believe that our parishes offer a rewarding opportunity for a leader to nurture and spread God's message - to be a life-giving presence - in our wider village communities. We hope particularly for all the baptised to grow into deeper discipleship and to engage our unchurched with the transforming love of God"*

We seek a priest who will help us to Engage, Grow and Deepen in our mission, with their vision of mission in rural spaces, and outreach to the communities, young families, children and young people in which we live and serve.

We are three quite small rural parishes who are increasingly working together, sharing worship and social activities. We are strongly supported by the local community and continue to pay our Parish Share but need help in increasing consistent attendance of regular church services.

We wish to welcome a priest who will be able to build on what we are already doing and help us in our outreach to those who so clearly value what we have to offer but have not yet made the step into personal discipleship and fellowship.

# What we would like in a new vicar

Led by the spirit

Willingness to  
engage with rural  
communities

Able to balance  
traditional with  
fresh expressions  
of faith

Outgoing and  
Friendly

Committed to  
inclusivity

Navigate conflict  
with grace

Deal with the ups  
and downs of  
rural life

Good leader, with  
a willingness to  
delegate

Engage with  
families and  
young people

# What we can offer a new priest/vicar



Engaged and active PCCs with a strong Ministry Team



Strong partnership with local school who regularly use the church



Superb accommodation with 4 bedrooms and a spacious garden + separate annex can be used as office



Established teams who collaborate and support each other and you



Good amenities including local shops, pubs, activity centre, village halls and more



Currently financially sound with Parish Shares paid in full

# Your Team

## Licenced Lay Ministers

Maggie Coiley

Glenn Coiley

## Authorised Lay Ministers

Elaine McCarthy – Music and Worship

Jackie Manderson – Baptism

Judy Chalkley – Pastoral Care

## Music

Judy Chalkey – Choir

Elaine McCarthy – Organist

John Hitchin – Organist

Benefice Band

## Benefice Newsletter

Elizabeth Edmunds

## Church Wardens

Clive Shaw – All Saints

Julia Harris – All Saints

Bryan Kitchen – St. Andrew's

Robert Manderson – St. Andrew's

Elaine McCarthy – St. Nicolas

## Treasurers

Gill Shaw – All Saints

Sir Hugh Duberly – St. Andrew's

Jennifer Abel – St. Nicolas

## PCC Secretaries

Marion Davies – All Saints

Alexander Turner – St. Andrew's

Rebecca Rowley-Smith - St Nicolas



# The Vicarage – Great Staughton



4 Bed detached house with off-road parking and substantial garden.

Annex with separate door and toilet can be used as an office.

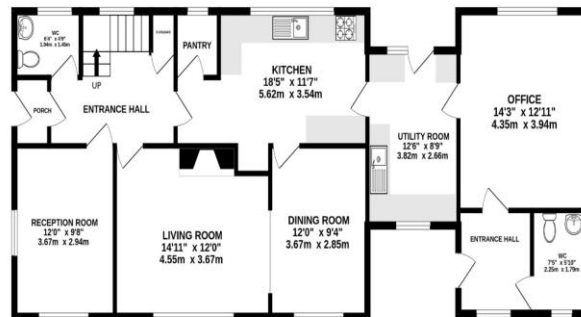
Oil-fired central heating



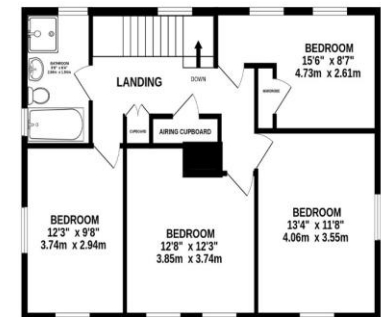
Close to all village amenities



GROUND FLOOR  
1122 sq.ft. (104.2 sq.m.) approx.



1ST FLOOR  
736 sq.ft. (68.4 sq.m.) approx.



ST ANDREWS VICARAGE, PE19 5BF

TOTAL FLOOR AREA: 1858 sq.ft. (172.6 sq.m.) approx.

Whilst every attempt has been made to ensure the accuracy of the floorplan contained here, measurements of doors, windows, rooms and any other items are approximate and no responsibility is taken for any error, omission or mis-statement. This plan is for illustrative purposes only and should be used as such by any prospective purchaser. The services, systems and appliances shown have not been tested and no guarantee as to their operability or efficiency can be given.  
Made with Metropix ©2024



Great Staughton

Little Staughton

Hail Weston

The Benefice has three  
church parishes



The market town of St. Neots is easily accessible from the Benefice and has major supermarkets and general stores.

Both Bedford and Huntingdon a little further away.

There are good links to London by train from St. Neots and Bedford and good road links (A1M,A14,A428,A421) to Cambridge, Milton Keynes and Peterborough and beyond.

“We are a growing Diocese in a growing region”

# The Benefice is greater than the sum of its parts because...



## We do a lot together

- Joint worship planning meetings
- Benefice services
- Band with flutes, guitars etc.
- Rogation and plough services
- Social events
- Children's camp

## We share resources

- Website: [www.swhw.co.uk](http://www.swhw.co.uk)
- Newsletter
- Clergy, LLMs and ALMs

## We support each other's events

- Black tie dinners and Harvest lunch/supper
- Fetes and fundraisers
- Cream Teas

## And we get along well with each other

- We are an inclusive Benefice
- We have an open baptism policy

Schedule of services under previous incumbent					
	1st Sunday	2nd Sunday	3rd Sunday	4th Sunday	5th Sunday
8:00am	BCP Holy Communion St. Andrew's - Vicar				
9:00am	Parish Communion All Saints - Vicar	Parish Communion St. Nicolas - Vicar	Parish Communion All Saints - Vicar	Parish Communion St. Nicolas - Vicar	
10:30am	All Age Worship St. Andrew's - LLM Morning Praise St. Nicolas - Vicar	Parish Communion St. Andrew's - Vicar	Parish Communion St. Andrew's - Vicar	Parish Communion St. Andrew's - Vicar	Benefice Communion Rotates around benefice - Vicar
3:00pm			Creative Communion St. Nicolas - Vicar		
4:00pm (GMT) 6:00pm (BST)				Evensong (last Sunday of Month) Rotates around benefice - Vicar	



# Things we do well in our benefice



Social Outreach (e.g. Coffee mornings, men's breakfasts, Mission in Puppetry)

Choirs and music with 2 organists and Benefice Band (guitars, flutes etc.)

Service preparation and rotas. Up to date website

Welcoming

We don't take ourselves too seriously

Social groups and outings – theatre, cinema, concerts, etc.

Bell ringers active in the Staughtons

Local Support for the buildings with recent well attended tours of St. Andrew's

100/200 lottery clubs support that help fund the maintenance and day to day running of each church

Well attended major festivals and special services such as Plough Sunday, Pathfinders & Memorial Service

Involvement in the community. A singing group rehearses in St. Nicolas

Good collaboration with Baptist Chapels in Perry & Little Staughton

# Where we need your help

Attracting and keeping teens  
and new church members

Growing the number of people  
who support the day to day  
running of the parishes and the  
church buildings

Turning public support into  
attendance

Offering secondary school age  
young people engagement

Spiritual reflection and  
growth. We have had a  
successful "away day" and  
want to build on that

Seeking funding and support  
ambitious projects for  
renovating our churches and  
creating community spaces

Exploring Fresh Expressions  
and finding those that work in  
rural communities to growth  
engagement with church

Engaging young families and  
bringing them into church  
regularly

# St Andrew's Church Great Staughton

Great Staughton St Andrew's is an impressive and beautiful Grade 1 listed building dating back in parts to the 13th century, which is open every day from about 10.00am to dusk and has many visitors.

It has a north and a south aisle, an imposing tower, and a small chapel at the east end of the north aisle dedicated to the Gaynes family (where the choir robes today).

There are six bells of historic interest, recently re-tuned and rehung, and a Sanctus bell, dating back to 1280 AD, which has also been rehung and repaired.

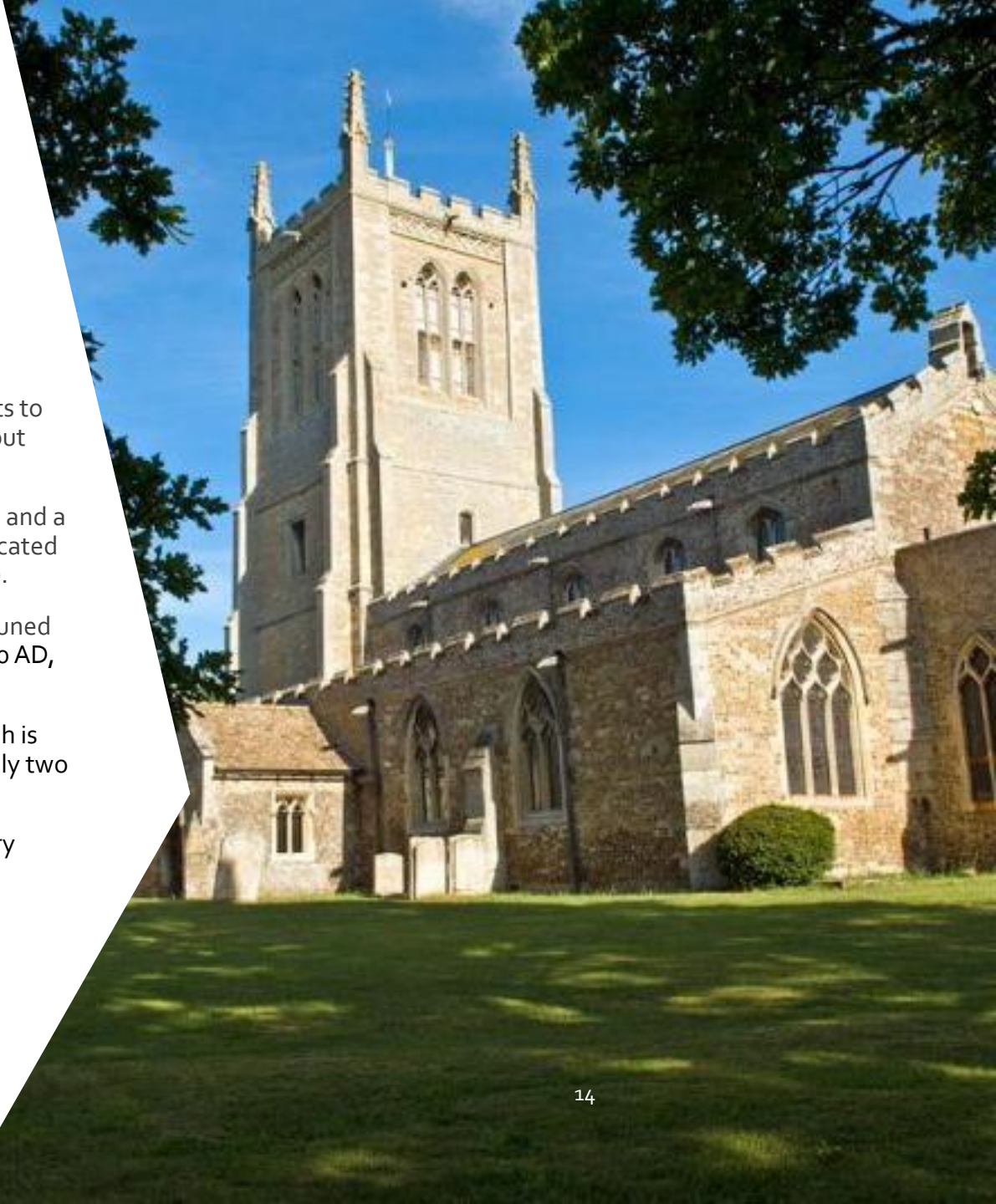
The tower also contains the clock mechanism which is described as a "bedstead" construction – one of only two in the area.

It is the parish church for Great Staughton and Perry

<https://swhw.co.uk/st-andrews/>

<https://www.greatstaughtonpc.org.uk/>

<https://perryparishcouncil.gov.uk/>





# St Andrew's, Great Staughton Parish



## Population 1490 (with Perry)

- 80 children in Great Staughton primary academy
- HMP Littlehey has 1200 inmates with its own Chaplin

## Highlights

- Electoral roll 67
- Strong links with the local primary school with 3 school services annually

## Amenities

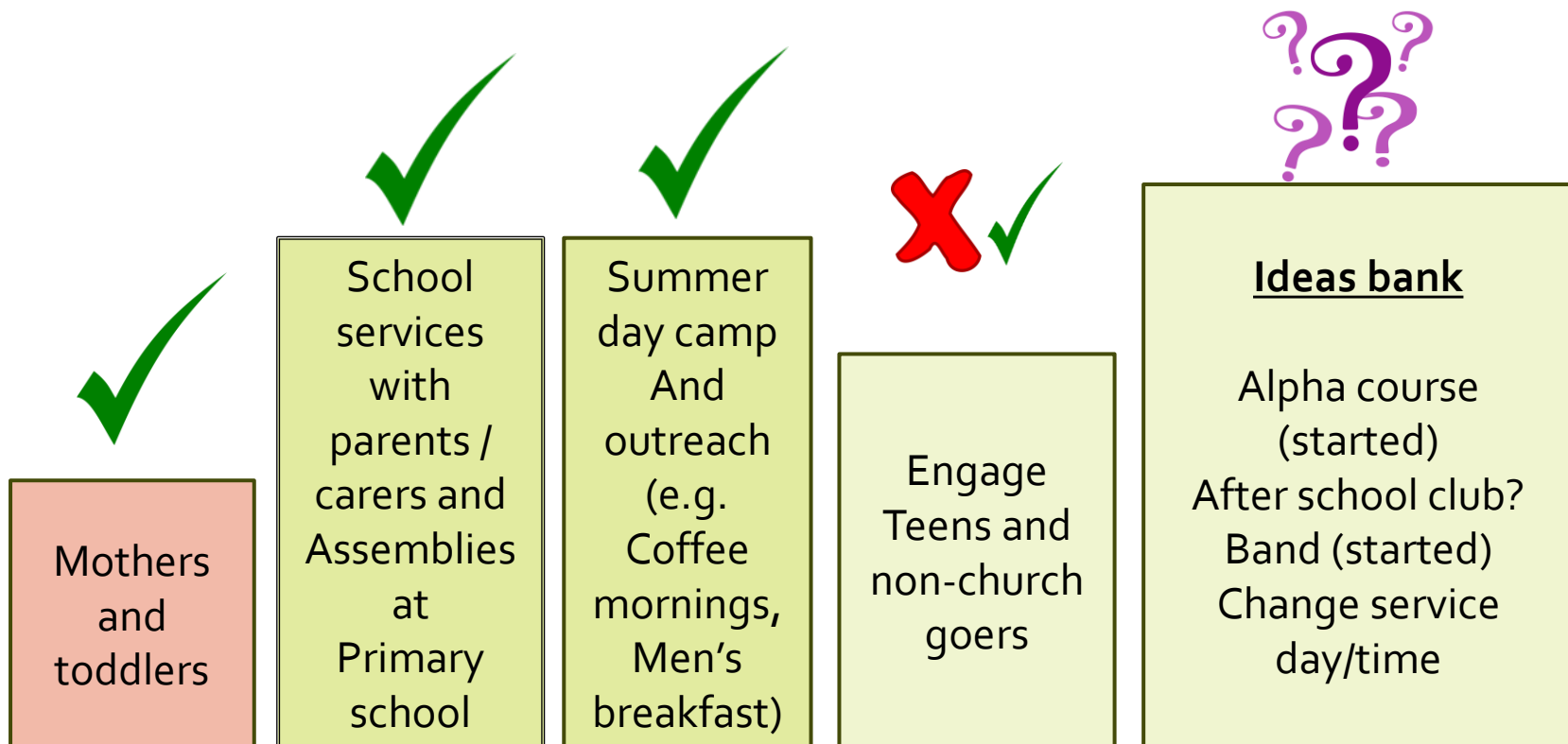
- Grafham Water Sailing/Fishing/activity centre
- Doctors' surgery
- Two Pubs in Great Staughton & 1 in Perry
- Post Office/Newsagent in Perry
- Butcher
- Two hairdressers in Great Staughton & 1 in Perry

## Schools

- Great Staughton primary academy
- Secondary schools are in St. Neots, Hinchbrook and Kimbolton (fee paying)

# St Andrew's Great Staughton Parish profile

“We believe that our parish offers a rewarding opportunity for a leader to nurture and spread God’s message - to be a life-giving presence - in our wider village communities. We hope particularly for all to grow into deeper discipleship and to engage our non-churchgoers with the transforming love of God”



# St Andrew's, Great Staughton

Our partnership with the parish church is a deeply valued part of school life. The clergy's regular visits, support for our assemblies, and involvement in major festivals help our children understand the richness of our local community and the Christian values that shape it. The relationship is warm, collaborative, and genuinely uplifting for pupils and staff alike. We look forward to continuing this positive connection and would warmly welcome an incumbent who shares a passion for working with children and schools.

Suzi Whiting  
Executive Headteacher  
Great Staughton Primary Academy





# All Saints Church Little Staughton

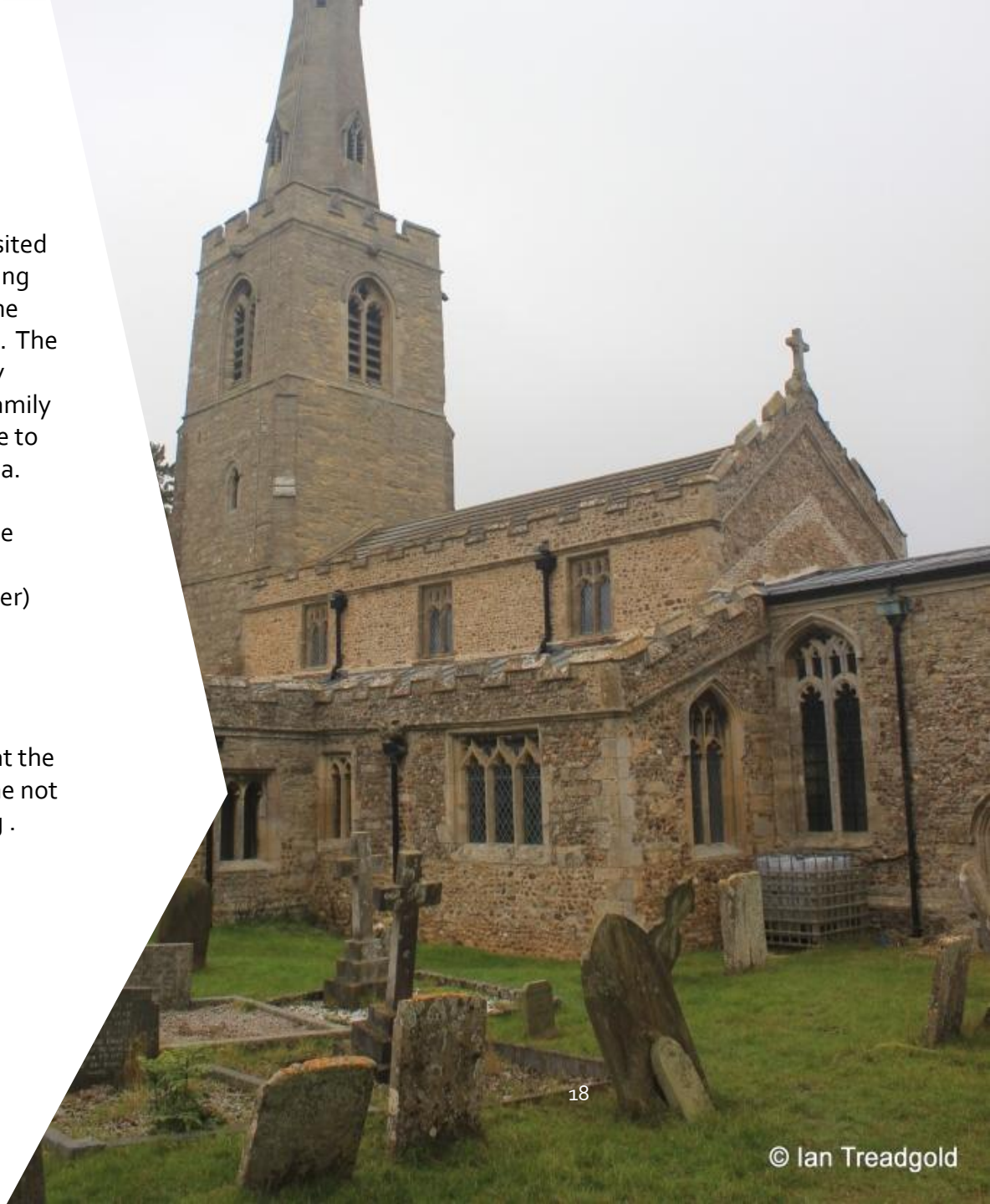
The 12<sup>th</sup> century Grade 1\* Church is floodlit (sponsored) most the year and is prominently sited on the ridge to the East of the village proclaiming its presence to the surrounding countryside. The spire is about the same height as Ely Cathedral. The south aisle chapel ( St Margaret's) is commonly known as the Pathfinder Chapel and attracts family descendants of RAF veterans from far and wide to view the Memorial Book and other memorabilia.

The bell tower houses a peal of five bells, whose origins from the 15<sup>th</sup> century (4<sup>th</sup> bell cast by Johanna Hille, Church Bell Conservation Register) through the 16<sup>th</sup> and 17<sup>th</sup> centuries.

There is an active group of ringers but, unfortunately there is no ringing. Significant restoration work is planned, and it is hoped that the application for a Faculty will be submitted in the not too distant future along with major fundraising .

<https://swhw.co.uk/all-saints/>

<https://littlestaughtonparishcouncil.gov.uk/>



# All Saints, Little Staughton Parish



## Population 440 (2021)

- 377 over 18
- 14% under 18

## Highlights

- Electoral roll 28
- Strong links to RAF Pathfinder force WWII
- Various fundraising events throughout the year
- Christmas carols with Santa
- Strong support from the village for churchyard care & general maintenance
- The PCC looks forward to working with the new incumbent on different expressions of church and services with the aim of increasing regular attendance at services

## Amenities

- Church has useful servery/meeting area and toilet facilities
- Brownies and Guides
- Micro brewery pub
- Village hall hosting many community activities and clubs
- Farm shop and camp site
- Golf club (2 miles)

## Schools

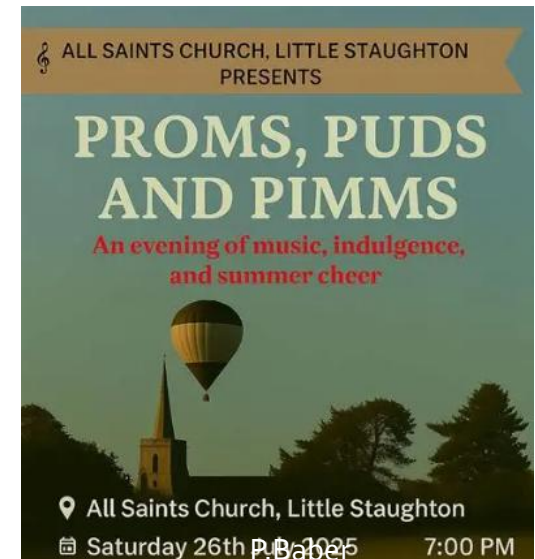
- Primary school (Kymbrook) in Keysoe (2 miles) & Kimbolton Prep
- Secondary schools are in Sharnbrook plus 6<sup>th</sup> form college. The Bedford School and Kimbolton School (fee paying)

# All Saints, Little Staughton



What a wonderful honour to all the air men who flew from RAF Little Staughton - my Uncle Bernard and Tom McLauchlan to name two! When they returned from their missions and saw this church steeple they knew they were HOME. (Christine Grindal)

All Saints' Church, Church Lane, Little Staughton. Well worth visiting for its history and its strong association with RAF 109 and 582 Squadrons.





# St Nicolas Church

## Hail Weston

The church at Hail Weston is a Grade II\* listed 13th century pebble rubble building with some limestone and clunch dressings, with a plain tiled roof and consists of a chancel, nave, west tower and south porch.

Some rebuilding took place in the 15th century.

The church was completely restored in 1884, when the south porch was added.

There is a Norman font and a fine carved roof beam, some ancient pews with original carved poppy heads.

The wooden tower is thought to be the only one of its type in Cambridgeshire

Re-ordering is ongoing and will result in an open space for community use at the west end of the church

<https://swhw.co.uk/st-nicolas/>

<https://www.hailweston.org.uk/>



# St Nicolas, Hail Weston Parish



## Population over 600

- 23% under 18 (2001)

## Highlights

- Electoral roll -30
- Recent church upgrade toilet and servery in a purpose-built extension
- Project to upgrade heating, lighting and use of space underway
- Strong local community support with maintaining churchyard

## Amenities

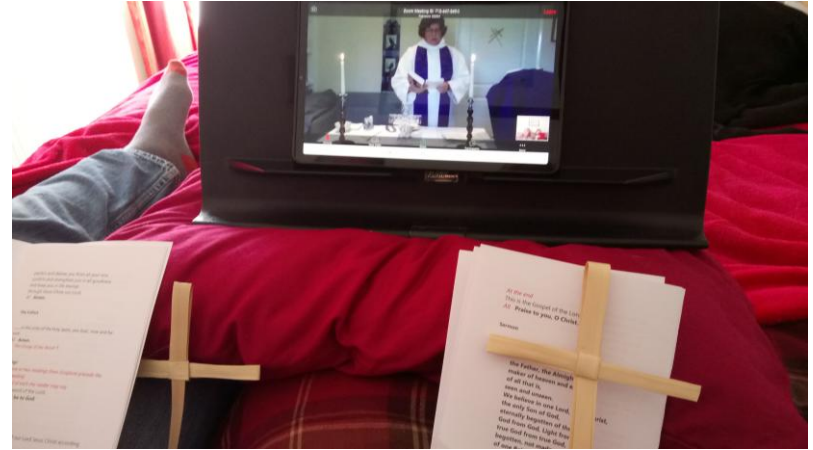
- Lots of Clubs
- Royal Oak pub
- Village hall
- Visiting library
- Cycle route through the village

## Schools

- Primary schools in Great Staughton and St. Neots
- Secondary schools are in St. Neots, Hinchbrook and Kimbolton (fee paying)



# St Nicolas, Hail Weston



The community supporting St. Nicolas church fund raising with an auction of artworks from local artists.

Phase 1 saw the porch move from the south, to be replaced by a new servery and toilet, to north side of the church.

Surviving lockdowns across the benefice with online services, coffee mornings, quizzes and sponsored bible reading marathon



# Future Plans and Challenges

- ▶ Re-ordering projects within each church to create greater community use:
  - ▶ St. Nicolas Restoration Group (SNRG) moving onto phase 2 with new heating and lighting
  - ▶ St. Andrew's Renovation (StAR) Project creating a community space and facilities at the West End of the church and base of the tower
  - ▶ All Saints Bells and Vestry renovation
- ▶ Ensuring the parishes can continue to pay their parish share without using reserves
- ▶ Engaging younger families/people in everyday church life and taking on roles to maintain the upkeep of the building/PCC.
- ▶ Maintain existing giving through membership of 100/200 clubs that provide a regular source of funds for maintaining the fabric of the church

# Finances

There is a long record of the benefice paying the requested Ministry Share in full; and the priests' expenses are also met in full. St Andrew's has a very long standing 100 Club which raises £3000 every year for the fabric fund. Both St Nicolas and All Saints churches have 100 clubs running successfully

Copies of recent annual accounts are available.

## Statistics for Occasional Services 2019 – 2024

- St Andrew's: Baptisms 12; Confirmations 0; Marriages 12; Burials 45; Cremations 24; Easter 271; Christmas 765
- All Saints: Baptisms 11; Confirmations 0; Marriages 1; Burials 6; Cremations 4; Easter 72; Christmas 145
- St Nicolas: Baptisms 6; Confirmations 5; Marriages 12; Funerals 22; Cremations 3; Easter 63; Christmas 269

We all have open churchyards, maintained by the PCCs and village volunteers, with some assistance from the Parish Councils.

# In conclusion

We hope you will be interested in joining us and we offer a warm welcome to anyone who is interested in finding out more about us, possibly by an explorative visit.

We have been blessed with a series of good and innovative priests over the last twenty years and more, and very much hope that someone will find the prospect of working with us in mission and prayer both attractive and challenging enough to want to join us.

We are willing and enthusiastic to find new paths in mission and worship to foster the life of our much-loved parishes.

The Churchwardens and Licenced Lay Ministers of the Benefice

