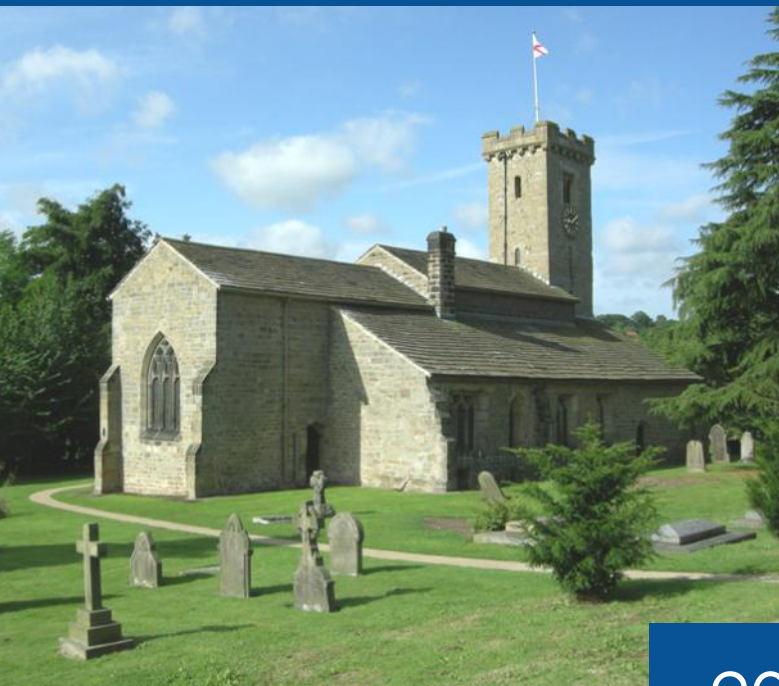


The Parish of Bardsey with East Keswick

# Parish Brochure

*A caring church where all are welcome to know  
the peace and love of God*



2025





## SUMMARY

We are a small, friendly and inclusive semi-rural parish, covering the villages of Bardsey and East Keswick, together with parts of adjacent villages.

Our two churches are the Parish Church of All Hallows, Bardsey and Saint Mary Magdalene, East Keswick.

In recent years, our parish has seen an increase in mission to families and the community, more lay participation in worship, a continuation of excellent management and maintenance by dedicated volunteers, and an increased openness to change. We have also become more outward looking, through our eco work, our social justice and our community mission.

We believe this is an important time of change for us, as we develop our outreach and reflect on our role in our community. We would love to welcome a vicar who is prepared to work with our existing team to support us in these aims.

**[www.bardseyekparish.com](http://www.bardseyekparish.com)**



MOTHER'S DAY FLOWERS

Some of the qualities and skills we would like to see in our new incumbent are as follows:

- A vicar who is able to inspire our congregation, help us grow in faith, and encourage new people into our church life, encouraging young families whilst still having regard for the older members of our congregation.
- A vicar who is approachable and a strong communicator, with good people and pastoral skills, who will be happy to work well with all aspects of our village communities.
- A vicar who is respectful of our traditions and adaptable to the needs of this church community, while also open to exploring new ideas which reflect modern day society.
- A vicar willing to encourage and enable laity in the planning and leading of worship.
- A vicar who is willing to work with us to build on and develop our mission to the local community, including our work with children and families and eco church, as we embrace change and explore new ideas and forms of worship.
- A vicar who is not afraid to address and manage difficult situations that may arise, with a supportive attitude and a sense of humour.

We will, of course, support our vicar in taking proper holidays and days off, as well as offering whatever support we can for their training, reading and wider personal development.



GUESTS AT THE CALLISTER CAFÉ



Our parish covers the villages of Bardsey and East Keswick, together with parts of adjacent villages. We are part of the East Leeds Deanery in the Diocese of Leeds.

The parish is in a semi-rural location situated eight miles north of Leeds and four miles south of the lovely market town of Wetherby, with close access to the A1 (M). The Yorkshire Dales, North York Moors, Harrogate and York are all within easy reach. Leeds city centre and the Diocesan office are easily accessible by the X98 and X99 buses, which run regularly through the villages on their route between Leeds and Wetherby.

Bardsey currently has approximately 1030 homes, and East Keswick about 450. Our combined population of around 3,600 incorporates families who have lived here for generations, retired persons, and a growing number of young families and commuters working in Leeds and beyond.

The parish is predominately Christian, with a mix of minority faiths. The majority of the present houses are owner occupied and the majority of the population would classify as white British, but our parish does include a mix of socio-economic groups and ethnicities.

Our parish has a long history and both villages are listed in the

Domesday Book. The remains of a 12th century motte and bailey castle survive to the north of All Hallows church, at Castle Hill and Bardsey is home to what claims to be the country's oldest pub - The Bingley Arms.

In addition to The Bingley Arms in Bardsey, there are two pubs and a butcher's shop in East Keswick. We have several hair and beauty salons in the parish and a wider range of shops can be found just a few miles away in Collingham and Wetherby, where there are also supermarkets and doctors' surgeries.

There are many scenic footpaths and bridleways to enjoy and an array of village societies and sports on offer. There is a strong community spirit, which is exemplified in the support given to regular village events, held at the churches and village halls. The village primary school joined the local GORSE academy trust in 2023.



*Bardsey Fields - A local community owned green space*

Worship at both churches in the parish is in the broad Anglican culture. We follow traditional liturgy with updated language and use a mixture of modern and traditional hymns led by a small choir at communion services, accompanied by organ, keyboard or digital music. We see ourselves as one parish, with the two churches working well together.

Our congregation comprises predominately retired persons. Several families also regularly attend, and the monthly family services, on the second Sunday of the month, increase the number of families and children compared to other weeks. A number of young adults and teenagers have recently joined the congregation. The numbers attending church fluctuate, but in our last October count we had an average total of 75 adults across our services in the parish on Sundays. We have 95 names on our electoral roll, with around 10% of our congregation living outside of the parish.

We have a strong culture of pastoral care and look after each other well. Every service is followed by refreshments to allow us to spend time together.



Our current regular services are as follows:

### **Sundays**

Either a single 10.00am joint service at one of the two churches, or 8.00am and 10.45am services at All Hallows and a 9.15am service at St Mary Magdalene.

Services rotate between Holy Communion, Morning Worship and Family Services.

### **First Wednesday of the month**

11.00am Holy Communion service embracing different forms of liturgy at St Mary Magdalene.

### Joint Services

We believe that it is important to worship as one parish and we hold joint services most Sundays in the winter months to avoid the cost of heating both churches and be more eco aware. Our first Sunday service of each month is a joint service. We also worship with our local Methodist friends at their Anniversary and Covenant services. Our Patronal Festivals (in November and July) are joyful, joint events where we share lunch together afterwards.

### Family and Young People

Children are always welcome in our churches and we have children's areas at the back of each church, with popular colouring and craft activities suited to the church season. The second Sunday of the month is our 'Family Service', with intergenerational worship. This non-eucharistic service lasts for half an hour, or 40 minutes when there is a baptism, and includes singing, a simple talk and prayers. We also support young people completing their Duke of Edinburgh's award, by providing opportunities for them to volunteer in the church.

### Baptisms

We have a baptism coordinator and we keep in touch with baptism families and invite them to our family services and special events. We send cards to families on the anniversary of a baptism and all children baptised in church are given a knitted teddy bear made by parishioners.



CHILDREN IN THE CRAFT AREA



### Christmas and Easter

Our Christmas services are always popular and we welcome 200 people, predominantly families with young children, across the crib, carol and other Christmas services. Good Friday involves reflections at both churches. On Easter Sunday a dawn Eucharist is held, after which we gather and eat bacon sandwiches together.

### Memorial Services

In October we hold a service for all those who have lost loved ones. This service has proved very popular with those needing a quiet space to remember. We invite all those for who we have recently taken funerals.

### Study Groups

In addition to our regular worship we have a number of lay led church groups including a monthly bible study group and a Christian art group which meets via Zoom. In recent years we have also run Lent and Advent study groups, quiet days and away days.

Both churches have a small library of Christian texts available for anyone in the parish to borrow.



Our Parochial Church Council maintains an overview of our mission and worship and all other aspects of church management. It meets six times a year (plus APCM), with extra meetings as necessary. The parish is a registered charity (No.1134014) and all members of the PCC are trustees of the charity. A Standing Committee meets in between the PCC meetings.

There is a designated 'Parish Safeguarding Officer', who ensures that policies are in place for the safeguarding of young people and vulnerable adults. We are fully compliant with all training and use the Diocesan Safeguarding Dashboard.

Our two churchwardens, Jacquie and Fiona, are highly efficient and competent, and we are so grateful to them for all they do to enable the smooth running and maintenance of both churches, and in particular their efforts during our current vacancy to ensure that clergy cover has been provided for all services.

A salaried administrator, who works every weekday afternoon in the Parish Office, carries out the day-to-day management of the parish and is the first line of contact for all enquires.

We are also fortunate to have an SSM vicar with permission to officiate in the Diocese of Leeds as a member of our congregation.

We have developed lay leadership in the parish as part of our most recent five-year development plan. While we have no qualified lay ministers, members of the congregation make significant contributions to the running of the church and various aspects of services including the choir, playing the organ and keyboard, intercessions, readings, administering the chalice and many more practical tasks.

### Meet some of the team



**Jacquie Earnshaw**  
Churchwarden, All Hallows



**Fiona Siekierkowski**  
Churchwarden, St Mary Magdalene



**Catriona Brent**  
Parish Administrator



**Kathy Jones**  
Parish Treasurer



**Helen Render**  
Baptism Coordinator



**Charlotte Meek**  
Safeguarding Officer



Our mission statement is, 'caring churches where all are welcome to know the peace and love of God'.

We are members of Inclusive Church and the Small Pilgrim Places Network.

Although our congregation is a relatively small proportion of the population of the parish, the churches are central to many aspects of village life. We take the Christian message into the wider community in several ways:

#### **Weddings, Baptisms and Funerals**

Occasional offices are a very important part of our parish life, as we minister to those in our community, and sometimes from further afield, many of whom are not regular 'church goers'. We see our care and support during the preparation for these events and afterwards as a valuable opportunity to share God's love and start people on a new and meaningful faith journey.

#### **Community Events and Groups**

We open our churches and churchyards for many community events such as eco fairs, barbecues, concerts and parish meals. These are an important aspect of our community engagement and outreach, making new contacts and new friends.

The Callister Café serves a monthly soup and pudding lunch to elderly members of the parish.



PARISH 'GREEN FAIR' STALLHOLDER





A CELEBRATION OF APPLES



Both churches are open daily for visitors including walkers and children, with refreshments available during the summer months. The children's craft areas are well visited by local families.

Several village organisations visit the church. For example, the pre-school hosts its annual nativity play in the church, our village school, Bardsey Primary Academy, has visited the church for Christmas services and at other times of the year, and the Beavers, Cubs, Scouts and Brownies occasionally use the churches and churchyards for their meetings. The wider WI Golden Plover group often hold their Christmas Carol service at All Hallows.

Our annual remembrance services in November are well attended by the wider community, including uniformed organisations.

### **Recycling Hubs and Eco Work**

Recycling hubs are provided in both churches for the benefit of the whole community. We are proud that both our churches hold silver A Rocha awards, and our eco work further encourages the local community to consider their impact on the local environment.



BEAVERS IN ST MARY'S 'WILD' GARDEN

### **Our Newsletter**

The 'Village News' is a bi-monthly magazine published by the PCC. A free copy is distributed by church members and village helpers to every home in the parish. There is a balance of church news and input from local advertisers, social and council news, and articles from our parishioners.

### **Our Website**

Our recently reworked website gives information about both churches, services and events – our 'hits' numbers show it to be a regularly accessed resource. Intercessions, and sermons are included on it, when available, allowing those who are unable to attend physically to be a part of our worship.

### **Charitable Giving**

We recognise that as a community we are in a fortunate position financially. Donations from church lunches and the Callister Café are used to purchase food which is donated to St Aidan's food bank, in Harehills. The annual Christingle services raise money for the Children's Society and many members of the community have a collection box. We also make a monthly donation to WaterAid.

As a result of the generosity of the congregation we have, over the last few years, been able to support the work of St George's Crypt, Ataxia UK, Leeds Disabled Riding

*CT Nativity Shepherd*



Association, Martin House Hospice, St Aidan's Food Bank, St Gemma's Hospice, Zarach, Baby Basics, and local families in need.

While we are a small parish, there is a lot going on. Most members of our congregation are retired, and as they continue to age our pool of volunteers, able and willing to give their time to support our churches and their mission is reducing. We need to find new ways of working sustainably and developing lay leadership to ensure that we can continue to grow and look outwardly. We therefore need a vicar who is able to help us to think about how we can do things differently.



### ALL HALLOWS

The Parish Church of All Hallows is Grade 1 listed, and seen as one of the best surviving Anglo-Saxon buildings in West Yorkshire. The core of the present church was built around 850 – 900 AD. The period between 1100 and 1400 saw the adding, and the later widening, of a north and south aisle and the moving of a Norman doorway to its present position at the west end of the south aisle. The following centuries saw further additions including a north and a south chapel, which now serve as vestries.

All Hallows is home to the Bardsey Millennium Tapestry.

There is an internal toilet at the back of church, a small but much used kitchen facility, and a children's craft area.

A few years ago some pews were removed from the back of church, which enabled the area used for refreshments to be extended. Two pew frontals were also removed to accommodate those with accessible needs, and also to make extra space to enable a wider variety of events to be hosted in church.

In 2020 a screen was installed behind the chancel arch and a projector, which are used at all services and special events.

The church is surrounded by a very large churchyard including a wildlife area known as 'The Glade'. This is well maintained and has recently become an amenity for the village. It is an area of environmental beauty, and a place of rest and peace for our visitors.

The church is in sound condition and all urgent and essential works identified in the last quinquennial inspection have been completed. There is ongoing work in the churchyard, including the reparation of walls and tree maintenance. Our next quinquennial inspection is due in 2026.



*All Hallows Aerial View*

**ST MARY MAGDALENE**

The site for the church of St Mary Magdalene was given by the third Earl of Harewood and it opened for worship in 1857. It was originally designated a Chapel of Ease to the mother church at Harewood. In 1978 East Keswick became part of the Parish of Bardsey.

The church contains Thompson (Mouseman) furniture, with hidden mice. The church is in good order and well maintained by dedicated members of the congregation. To the rear of the church there is a terrace and churchyard which has a 'wilded' area and orchard planted in it, as part of our eco work. There is also a toilet accessed from the rear of the church.

In 2023, a screen was installed which is used regularly in services to display words and images in a variety of contexts.

Like All Hallows, St Mary Magdalene is open daily, and is used regularly by visitors and locals for quiet reflection and prayer. There is also a children's area at the back of the church.

The church is in sound condition and all urgent and essential works identified in the last quinquennial inspection have been completed.



ST MARY'S SOUTH VIEW



## THE VICARAGE



The vicarage is situated directly opposite All Hallows church at the centre of Bardsey village.

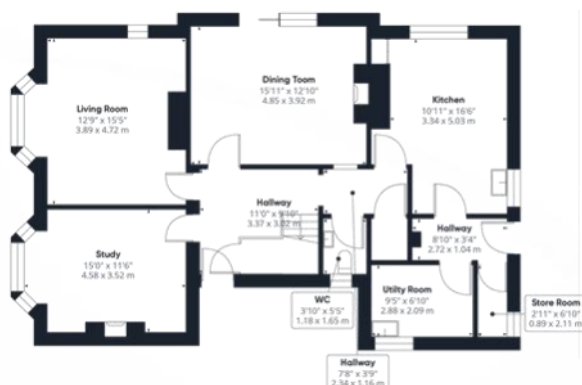
It is an attractive 5-bedroom detached family house in good order. The ground floor accommodation comprises a naturally bright entrance hallway, well-proportioned sitting room with a gas burning fire, a separate family room, dining room with patio doors leading out into the garden, kitchen with a selection of fully fitted units

and space for a cooker, dishwasher and fridge-freezer, as required, a utility room with plumbing in-situ for a washing machine and dryer, and a useful WC conveniently positioned off the hallway.

To the first floor, there are five double bedrooms. There is a modern family bathroom suite which, includes an electric shower over the bath, a basin and WC, as well as a separate WC and basin with modern shower suite.

Externally, there is ample off-street parking for a number of vehicles, a single garage which can be used for storage purposes, and well maintained, private gardens with established borders and a mini orchard.

## FLOOR PLAN



Ground Floor



First Floor

**THE CALLISTER HALL**

Our church hall, built in 1726 and also known as the Callister Hall, was originally the village school but became our church hall when a new school was built. It is rented every weekday morning by a village pre-school group, and at other times by church and village groups, such as bridge, bible study and coffee mornings, as well as for private events, including children's birthday parties, and even as an overflow space for wedding receptions when booked with the village hall, which is situated on the other side of the road.

Once a month it hosts the pop-up 'Callister Café', which serves a soup and pudding lunch.

A redevelopment and extension, undertaken in 2008, provided an improved kitchen, disabled toilet facilities and a parish office. It has great potential as a church and community asset, but is not currently breaking even.



Our parish finances are overseen by the PCC Treasurer, assisted by a Giving Officer. In 2024 our regular giving totalled just over £40,000 from 83 regular givers, and we claimed Gift Aid on this where appropriate.

With the support of our PCC, we recently joined the Parish Giving Scheme (PGS) to enable our donations to be managed more efficiently.

Our parish share carries a large socio-economic weighting, which places a significant burden on our finances. Whilst we were able to pay our share in full in 2022 the amount paid in 2023 fell short of the requested amount, as the PCC agreed to preserve our limited investment funds. However, following a fundraising campaign in 2024 we were once again able to pay our full share and it is our intention to pay as much of our share in 2025 as our financial circumstances permit.

The financial investments of our churches have been drawn upon in recent years to enable us to pay our parish share. These funds are now approaching a critical level. It will be vital for us to develop additional streams of income through our skills of fundraising, stewardship and project leadership to enable us to continue paying our parish share,

meet our everyday costs and maintain the fabric of our buildings.

Capital expenditure is currently met from our investment monies and supported by local fundraising, donations and legacies.

Although the bottom line of our 2024 balance sheet (£776k) looks very healthy this does include the market value (£366k) of the Callister Hall, which is not available to spend. It also includes an endowment fund (£269k), of which only the interest is available to spend, and then only on the maintenance of St Mary Magdalene's churchyard. There are also restrictions on some of our other funds, that only allow the monies to be used in accordance with certain criteria.

In common with all parishes, we would like to improve our income from planned and other giving sources. The fundraising and stewardship campaign in April 2024, was very successful, with the fundraising generating over £27k, helping us reduce the deficit in our budget.

A copy of our most recent accounts is included with the brochure. These are the 2024 accounts which have been examined and approved by the PCC, but not yet ratified at the APCM.

## THE WIDER CONTEXT AND OUR PRIORITIES

The last three years have seen an increase in mission to families and the community, more lay participation in worship, a continuation of excellent management and maintenance by dedicated volunteers and an increased openness to change.

We have become more outward looking, as evidenced by our joining the Inclusive Church movement and through our eco work and our community mission.

We have strong links with the East Keswick Methodist Church in a Churches Together group. Joint events include a couple of joint celebratory services every year, a World Day of Prayer service, a fundraising quiz and a Christmas community nativity.

We believe this is an important time of change for us and we would love to welcome a vicar who is prepared to work with our existing team and support us as we move forward. We would like our new vicar to encourage our inclusive ethos and help to get this message out to parishioners.

Our current five year plan runs until 2026, and so we hope that our new vicar will have a key input into our next plan, which we will soon start to compile.

Our current plan has focused on:

- Growing in our faith
- Welcoming spaces to worship
- Varied styles of worship
- Developing inside and outside church
- Putting our church at the heart of our community
- Eco issues



*Sustainability presentation in All Hallows during the Green Fair*



## THE WIDER CONTEXT AND OUR PRIORITIES

We have identified four key areas of church life which we would like to develop:

- Lay Leadership
- Work with young children and their parents and extension of this work to older children and teenagers - we had an extensive outreach programme pre-Covid and hope our new incumbent will support future efforts to further develop our engagement with young people and strengthen relations with the local school in the parish
- Service structure - the PCC recognise that our historical structure of three Sunday services is likely to need adjustment, and as discussed earlier we have already started to hold more joint services, particularly in the winter months.
- Alternative forms of worship

We would like our new vicar to prioritise:

- Building on the community mission we have established in the past few years, so that our churches can remain at the heart of the community.
- Supporting adult enquirers and development of appropriate courses for people to grow in discipleship.
- Continuing to see the churches not just as a building for the few but as a resource for the whole community – to encourage through our doors those who do not come to church.

Thank you for reading our Parish Brochure. Our doors are open – may we welcome you in?

