



DIOCESE OF BRISTOL

TRANSFORMING CHURCH. TOGETHER.

**PRIEST IN
CHARGE,
RECTOR
DESIGNATE**
GAUZE BROOK



CONTENTS

Thank you for your interest in this position. We hope this profile will help you with your ongoing discernment.

| | |
|---|---------|
| The Diocesan Strategy: Transforming Church. Together | Page 3 |
| Being Clergy in the Diocese of Bristol | Page 4 |
| A message from the Acting Bishop of Bristol | Page 5 |
| Area Dean's Message | Page 6 |
| The Deanery | Page 7 |
| The Gauzebrook Group of Churches | Page 8 |
| Who We Are | Page 9 |
| Who God is Calling Us To Be | Page 10 |
| Our Context | Page 11 |
| Parish and Worshipping Life | Page 12 |
| Serving Our Schools | Page 13 |
| Our Team | Page 14 |
| The Rectory | Page 17 |
| The Churches of the Gauzebrook Group | Page 19 |
| Gauzebrook Group Pattern of Worship | Page 26 |
| Role Profile | Page 28 |
| Person Specification | Page 30 |
| Parish Information | Page 32 |
| Financial Information | Page 34 |
| Next Steps | Page 36 |

THE DIOCESAN STRATEGY

TRANSFORMING CHURCH. TOGETHER began in 2021 with listening to God and to one another.

From these conversations, four guiding values were discerned. Creativity, Openness, Bravery and Generosity inspire a vision and strategy which seeks transformation across the whole Diocese by the grace of God. Each Deanery and Benefice is encouraged to work out what TC.T means in their particular context – the same principles can inspire and develop mission in very different ways.

With major financial support from the national church, the Diocese is offering support and resources in key priority areas of ministry.

These include:

- ♦ Enabling parishes to discern and implement vision
- ♦ Help for benefices with evangelism and discipleship
- ♦ Support for teams running New Christian Communities
- ♦ Volunteer training
- ♦ Supporting parishes with the care and improvement of church buildings
- ♦ Investing to become a Net Zero Diocese by 2030
- ♦ Addressing the church's history on racial justice and diversity
- ♦ Developing partnerships between the church and local communities
- ♦ Investment in under 18s work
- ♦ Investment in priority community parishes, church plants/grafts and Mission Areas
- ♦ Clergy coaching and wellbeing

This is a huge and exciting vision, which we can only attempt in the strength Jesus supplies through his Spirit.

DIOCESAN SUPPORT SERVICES

The Diocesan Support Services exist to support the mission of the church. Based at the Diocesan Office to the north of Bristol and made up of 90 employees and volunteers, the DSS serve ministers, parishes and schools by expressing vision, strengthening relationships, empowering people, maximizing resources and developing structures. We offer training, consultancy and advice. We manage many structural elements of the life of the Diocese.



BEING CLERGY IN THE DIOCESE OF BRISTOL

The Diocese of Bristol is presided over by the Acting Bishop of Bristol and Bishop of Swindon, the Right Reverend Neil Warwick. The Venerable Christopher Bryan is the Archdeacon of Malmesbury and the Venerable Becky Waring is the Archdeacon of Bristol. The Reverend Adam Beaumont is the Associate Archdeacon.



Pastoral care of clergy is primarily the responsibility of the Bishops, assisted by the Archdeacons, Area Deans and the Clergy Wellbeing Officer. Alongside one-to-one matters as they arise, an annual clergy wellbeing survey helps to identify themes affecting clergy and their families, which are then addressed appropriately.

There are many ways in which clergy are accompanied in their ministry. Every incumbent is invited to work with a coach as part of the Transforming Church. Together strategy. The Parish Development Officer works alongside clergy where support is needed to shape vision or mission. For those in positions of first responsibility, additional tailored input and development are provided. The Mission and Ministry team offers regular opportunities for ministerial growth for clergy and laity, and the Archdeacons, together with the TC.T team, host a Church Teams Day each year, resourcing parish officers in their roles.

The Property team are progressing a programme to move every parsonage house closer to carbon net zero, which, as well as reducing emissions, should also lower utility costs. They are also available to advise clergy on any housing concerns.

Occasionally, unexpected financial pressures may arise. In such circumstances, the Archdeacons can direct clergy to appropriate avenues of assistance and, where necessary, draw upon a discretionary fund to ease financial strain. These matters are handled confidentially, and clergy are encouraged to contact the relevant Archdeacon should such needs occur.

FROM THE ACTING BISHOP OF BRISTOL

The Gauzebrook Group of Churches is seeking a dynamic and outward looking Priest in Charge to join a benefice and diocese which treasures parish ministry, including in its rural centre.

Gauzebrook benefice is a family of vibrant worshipping communities and a group of churches which work together well. They have a long history of faithful presence and engagement in their communities. The church buildings are 'fit for purpose' and used effectively for prayer and worship, hospitality and outreach. There are opportunities to translate the good community links with the villages into evangelism and discipleship.

The next Priest in Charge will have a good foundation on which to build. Currently, there is an experienced rural priest and area dean on a one-year placement to ensure that the next incumbent can flourish and realise the benefice's potential in the coming years. We are looking for a missional priest, highly collaborative, and confident ministering in rural communities and in schools. The benefice is part of North Wilts deanery and a thriving mission area which is committed to innovative rural ministry.



DIOCESE OF BRISTOL
TRANSFORMING CHURCH. TOGETHER.

The diocese of Bristol is a great place to serve with a strong commitment to supporting and empowering the local church. This is an exciting time to join us! There is a real trust in ministers and congregations to lead in ways which are authentic to their context. We value deeply our clergy and prioritise their wellbeing through a dedicated coaching network, pastoral care and leadership development.

I hope this profile describes a diocese and benefice within which you can thrive. Be assured that we are praying alongside you as you discern and contemplate a new chapter of ministry.



Yours in Christ

+ Neil Swindon

THE RT REVD NEIL WARWICK
ACTING BISHOP OF BRISTOL,
AND SUFFRAGAN BISHOP OF SWINDON

AREA DEAN'S MESSAGE

North Wiltshire Deanery is a grouping of 6 largely rural benefices with only 2 town churches amongst our 31 parishes, the current groups came into being in 2016 after a large scale pastoral reorganisation across the whole Deanery. Chapter comprises 6 incumbents and 10 self-supporting associate / active retired clergy, with good administrative support. It is also fertile ground for curates – we have two at the present time.

Over the last few years as the North Wiltshire Mission Area, the working relationships between both clergy and senior laity have become ever closer, as we work across boundaries, doing many things 'better together' by pooling our resources whilst leaving parishes the freedom of doing best what they do locally. This is not without its challenges, and we are at a point of transition where the funding for

the Mission Area is ending and we have to find ongoing funding for those things which we wish to continue, for example our very successful youth programme.

This vacancy has come about for the very best reasons. The Reverend Adam Beaumont, appointed to Gauzebrook in 2020, arrived in the middle of lockdowns and then towards the end of 2023 was appointed as Associate Archdeacon for the Diocese! Prior to Adam the previous incumbent Christopher Bryan was in Gauzebrook for 9 years before becoming the Archdeacon of Malmesbury. Whilst this is a complete coincidence, and somewhat of an honour for the group, it has also come as quite a surprise; they were enjoying getting to know their incumbent and working through the visioning process to discern what God might be calling upon the benefice to do.

We are looking for someone who can help complete that visioning process and bring their particular skills to bear on the life of the churches.

Since June 2025 I have been seconded for 12 months to be the Interim Priest of Gauzebrook. This has helped us really understand the needs of this benefice, and to see it in a different perspective, as four larger churches plus four smaller churches than in effect make a fifth church, with some work needed to align the governance with that.

We are looking for someone who can help embed good group working through a reenergised Benefice Council, and build on the desire to do things better together

If you would like to have an informal conversation with me, then please email me at interim.gauzebrook@gmail.com. In the meantime, please be assured of my prayers as you consider this profile and discern God's call upon you.

THE REVEREND STEVE WILKINSON,
AREA DEAN OF NORTH WILTSHIRE

THE DEANERY

NORTH WILTSHIRE MISSION AREA (NWMA)

The Diocese of Bristol has a strategic initiative to support its vision and priorities to develop Mission Areas and Resourcing Churches. In a Mission Area, parishes across a wider geographical area partner in a co-ordinated approach to mission. www.bristol.anglican.org/mission_areas Since 2017 the 31 parishes of North Wiltshire have been working closer together, underpinned by strategic Development Fund. The funding is now coming to an end, but the way we are working together has been permanently changed by deepened relationships between both clergy and laity. Where we can benefit from “Better Together” we do so (e.g. annual Marriage Preparation), but where something is best done locally it is left to the parishes.

There are some exciting projects in the Deanery which are not only bringing the churches together, but also giving a sense of mission to our outreach.

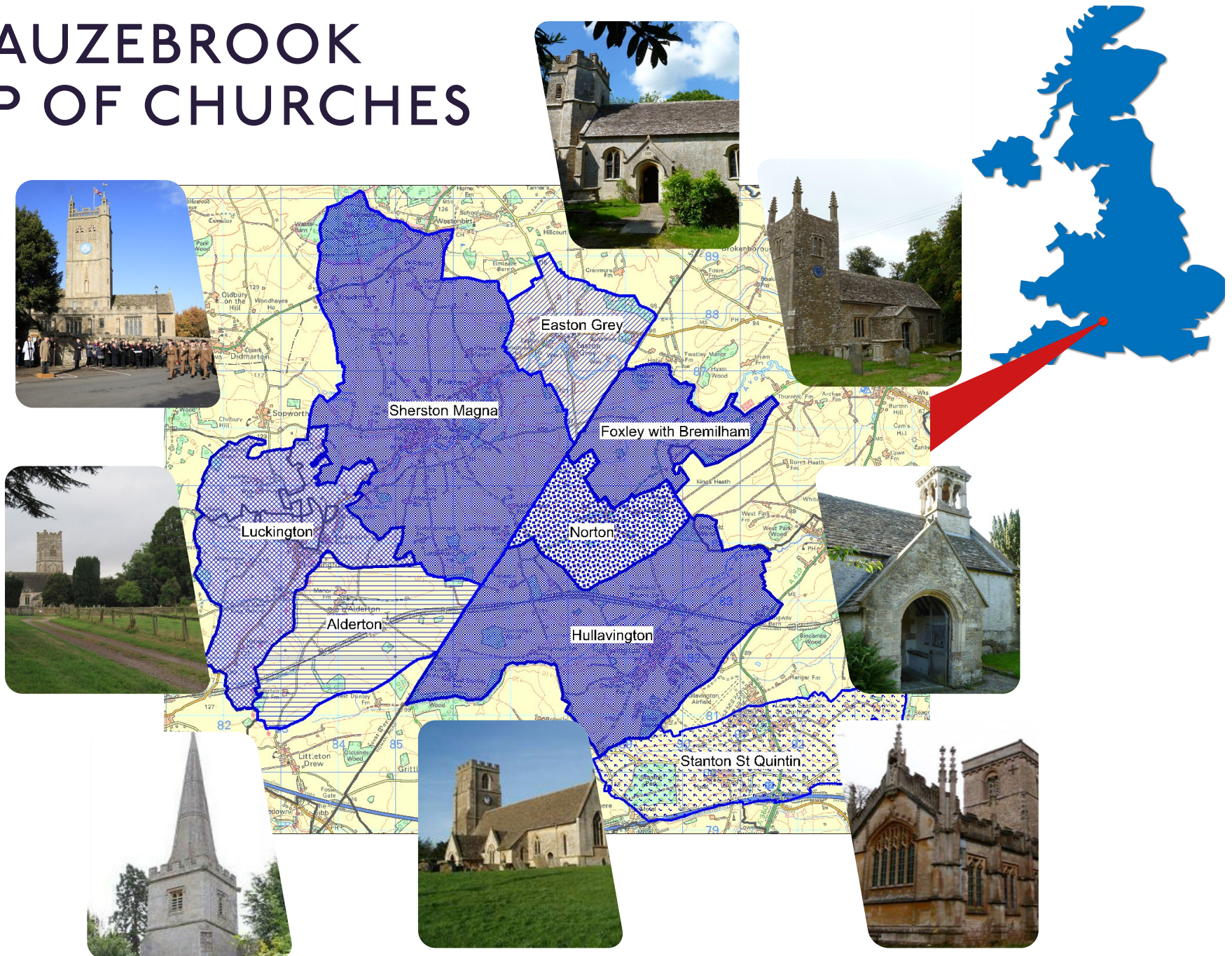
A pilgrimage route, the Athelstan Pilgrim Way, has been created around the church buildings of our Deanery, and was launched to coincide with the 1100th anniversaries of King Athelstan’s accession to the throne in 924 and coronation in 925. Athelstan spent a lot of time around here and was buried in Malmesbury Abbey. The six circular routes have walking guides and children’s guides, and encourage people to visit each building to encounter the architecture, to appreciate nature, or to get some exercise. Our prayer is that they will also encounter God along the way, and we are now working on equipping the churches with suitable materials about Christianity.



We have collaborated on Eco-Church, with 97% of the parishes currently having either a Bronze or Silver award, and we are working together to support each other through the challenges of reaching Carbon Net Zero by 2030.

Our youth programme, NWMA:Youth started in 2021, with the aim of having a Youth Mission Enabler supported by South-West Youth Ministries students working across the Deanery. With changes in the youthwork landscape this has changed, and our Youth Enabler Jessy is now supported by an administrator and a team of local volunteers. Work is deliberately focussed on Malmesbury Secondary School, where various regular activities including a revitalised Christian Union take place, along with a roaming Sunday evening youth Group ‘F4’ which goes around regular bases across the Deanery. Young people’s faith is being deepened, reflected in confirmations, and numbers are steadily increasing year on year. We are very proud of the fact that most of the PCCs in the Deanery have invested in this, collectively pledging £74k in the first three years when it was matched by national funding, and now £68k for the current three years when we are having to find match funding ourselves with the help of an experienced fundraising volunteer.

THE GAUZEHBROOK GROUP OF CHURCHES



WHO WE ARE

The Gauzebrook Group is eight parishes, each with its own rich history and distinctive character, united by a shared vision:

Loving God, Loving Neighbour.

- ◆ We serve our communities, recognising the vital role our churches play as places of connection, belonging, welcome, and invitation. We strive to reflect God's love for the world through care and support.
- ◆ We encourage one another in prayer and faith. We welcome opportunities to worship together at our monthly Group services. These gatherings help us grow in faith and guide others to encounter the Living God.
- ◆ We celebrate diversity in worship, offering a breadth of traditions and styles across the Group.
- ◆ We treasure our beautiful church buildings and take seriously our responsibility as their custodians. Our churches are open daily, providing spaces of sanctuary, peace, love, and hospitality for all.
- ◆ We value fellowship and hospitality, creating spaces within our churches that serve as coffee shops or community hubs.
- ◆ We value our children, young people and families, and continue to build strong relationships with schools, creating opportunities for families to grow in faith.



“CHURCH IS A PLACE IN WHICH I
CAN FEEL REMOVED FROM THE
‘NOISE’ OF THE WORLD.”¹

¹ QUOTATIONS ARE TAKEN FROM A SURVEY
OF CONGREGATIONS AND VISITORS IN
DECEMBER 2023

WHO GOD IS CALLING US TO BE



- ◆ We long to see lives transformed through faith. We recognise opportunities to deepen discipleship within our congregations, nurture those beginning their faith journeys, and strengthen connections with schools and families.
- ◆ We aspire to be generous, creative, brave, and open, and acknowledge our need for leadership and resources to equip and encourage us as we seek to be a relevant church for today's culture.
- ◆ We pray for energy to embrace the joyful, hope-filled mission opportunities God places before us. We look for leadership that unites us and builds on the potential of the Gauzebrook Council as a space for collaboration and shared decision-making.
- ◆ We want to extend our heart for hospitality and outreach by being Christ-like, invitational, and inclusive. We seek guidance to discern priorities and enable the change we long to see.
- ◆ We aim for sustainability in all we do – stewarding our finances, time, talents, and gifts wisely, while continuing our journey toward carbon net zero.
- ◆ Over the last year we have grown via regular 'Group PCC' meetings and want to continue to grow even closer together by rebuilding a formally constituted Benefice Council.

"ATTENDING CHURCH ENABLES US TO STRENGTHEN BONDS OF OUR CHRISTIAN COMMUNITY."



OUR CONTEXT

The Gauzebrook benefice covers eight rural parishes in the Deanery of North Wiltshire in the Diocese of Bristol. The county border between Wiltshire and Gloucestershire crosses the north of the benefice, and the M4 motorway is at the south. The benefice sits between the towns of Malmesbury, Tetbury and Chippenham. Bristol, Bath, and Swindon are about half an hour's drive away and London is about 70 minutes by rail from Chippenham or Kemble. The area is on the edge of the Cotswolds, a designated area of outstanding natural beauty and Westonbirt Arboretum is within the benefice's boundaries. Many of the villages are also in conservation areas. Although it is a rural benefice with working farms in the area, employment opportunities are very varied. There are many local enterprises of all types; some people work from home offices, whilst others undertake either short or long-distance commutes.

We are thrilled that our historic parish churches include some real gems. St Mary with St Ethelbert, Luckington, has been used for several films and television programmes. It is well known as the subject of the hymn "Let all the world, in every corner sing!" sung to the tune "Luckington."

Bremilham Church, in the parish of Foxley, is the smallest active church in England, with an annual Rogation Day Service which is well attended by people across the benefice. Foxley Church is also used as a film location. St Giles, Alderton is a potential film star, as internally it remains as it was restored in 1845.

There are four primary schools in the Group, two of which are Church of England voluntary controlled, and we have strong links with them all. Secondary aged pupils from the area have options for state schools in Malmesbury, Tetbury, Chippenham, Cirencester and Stroud, as well as many private schools.

9 Regiment, Royal Logistic Corps, is based at Buckley Barracks in Stanton St Quintin, with married quarters accommodation in both the parishes of Hullavington and Stanton St Quintin. With good relationships with the Regiment, Remembrance Day services in Hullavington, Luckington, Sherston and Stanton St Quintin have good attendance and community involvement, with support from the military as well as from our local uniformed organisations. Our schools also hold their own remembrance services in their churches during the week before Armistice.

Our church buildings are described on our website, www.gauzebrook.org with links to individual parishes via A Church Near You. The parishes are proud of their churches and their history. All our church buildings are open daily during daylight hours, providing a valuable physical link for the community and visitors.



PARISH AND WORSHIPPING LIFE

Our villages have their own characteristics and local flavour, with a strong community in each of them. Many church members have prominent roles in the villages, serving on parish councils, developing neighbourhood plans, serving as school governors, and enjoying active participation in community groups. We recognise the importance of pastoral care for those facing a range of challenges in and beyond our parish boundaries. Outreach is both practical and financial. In the case of the former, we work hard to keep abreast of the needs of our local residents, regardless of whether they are church attenders, and provide appropriately sensitive support on an individual basis.

Charitable giving is determined on an individual parish basis. PCCs identify priorities for donations and giving to external charities, at local, national and international level. Christian Aid week, on the other hand, continues to be organised centrally.

Providing encouragement in our faith to one another is a priority in our rural location. As well as the opportunity to attend group services in our different churches, we organise Lent groups and study groups across the benefice. Active home groups, run by lay people, meet regularly in Hullavington and Stanton St Quintin, welcoming members from across the group for Bible study, prayer and friendship. A group also meets weekly at lunchtimes in the Old Royal Ship in Luckington for study and fellowship. We would like to expand the number of groups. There are three regular weekly coffee mornings across the Group and a monthly 'Hub' in Hullavington each of which are important for community building and gentle outreach.

The Gauzebrook Family choir sings at special services; festival choirs are a very popular element of our Group Advent Services, a joyous example of worship with good attendance and refreshments afterwards. We have several musicians, including organists, across the group to support our

worship. The village carol services held in each parish are all well attended, with strong attendance. The Christmas Day service at Easton Grey (a festival church) brings the village together.

All our churches have an important role in their communities through funeral services, weddings and baptisms. Stanton St Quintin's location next to a hotel encourages use of the church for wedding services, and brings wedding couples into church. Many couples remain in contact with the church after their ceremony. Alderton and Sherston both have working bell towers and teams of ringers, and host visiting bell ringers to their towers. Both sets of bells are rung before morning services and on special occasions. We serve refreshments after morning services in most of our churches. Somehow our volunteers manage to provide coffee and cakes at the Group Services – even at the smaller churches with no facilities!

"WE ARE A COMMUNITY OF ALL AGES AND BACKGROUNDS."

SERVING OUR SCHOOLS

We work with our two church schools in Hullavington and Sherston and with the community schools in Luckington and Stanton St Quintin. All the local primary schools hold services in the local churches during the year, including Christingle, Easter and Harvest, and members of our ministry team visit the schools to lead Collective Worship. Other volunteers lead 'Open the Book' worship, after school clubs and we offer 'Experience' events in our churches to enhance the RE curriculum and to show our children that they are always welcome in church. In addition, our Church of England schools benefit from active Foundation Governors who offer advice and support particularly during SIAMS and Ofsted inspections.



SERVING OUR YOUNG PEOPLE

Together with our work in schools, we realise how important it is to establish a pattern of worship which suits younger families. This begins with careful preparation at the time of baptism and is followed through with our weekly toddler service, 'Little Lights'. Opportunities for all age worship occur regularly in our churches.

Two of the primary schools within the Group benefit from substantial funding each year from a small charity, the Anne Brayne Foundation, the aim of which is to support religious education and activities for those below the age of twenty-five in five of the Group's parishes.

Together with other churches which make up the North Wiltshire Mission Area, we have jointly funded the NWMA:Youth programme which employs a Youth Mission Enabler via SWYM (South West Youth Ministries).

The NWMA:Youth programme is focussed on Malmesbury Secondary School where most children from our villages go. Recognising that local teams already deliver a good service to each village primary school the youth team has strategic involvement by delivering 'Wild Church' sessions and 'Year 6 to 7 transition' workshops to the Year 6 classes, in order to bridge the gap between primary and secondary so that our team is already known to pupils when they get to secondary school. An 'Ice Cream Social' in mid-September each year is invaluable in getting young people together in those first days at the new school.



OUR TEAM

MINISTRY TEAM

The Ministry Team consists of the Interim Priest in Charge (until May 2026), Associate Minister (SSM) and five LLMs. We also have the services of a retired priest who holds PTO. One of our LLMs is our former Rural Schools & Churches Worker. The ministry team meets weekly for Pause and Pray, an opportunity for spiritual support and encouragement as well as for organising parish business. This provides an active communication link across the Group. Members of the Ministry Team enjoy conducting services in a range of styles. While some members minister more frequently in particular churches, all churches benefit from their availability to lead services.



THE REVEREND STEVE WILKINSON

Area Dean of North Wiltshire and interim Priest in Charge (2025/2026)

"I have been working with the parishes to strengthen group identity and behaviour, to support and encourage the Ministry Team and to help make steps towards a permanent Benefice Council."



THE REVEREND SUSAN HARVEY

Sherston resident for many years and a full time Self Supporting Minister since 2012. Susan is off-duty due to illness, pending a future return.

"I have much experience in pastoral ministry across the Group and enjoy building the relationships involved in taking Occasional Offices."



THE REVEREND ALASTAIR DAVIES PTO

Ordained in 1984 and served as an RAF Chaplain and the Senior Chaplain at the Royal United Hospital Bath, holds PTO in the Diocese of Bristol and is also a volunteer Chaplain on cruise ships.

"I take services in the churches across the Group and neighbouring parishes. I am a trained Spiritual Director and Cruise Bereavement Volunteer."

"WE VALUE THE COMMITMENT AND THE HARD WORK OF THE MINISTRY TEAM AS WELL AS ALL THOSE WHO CONTRIBUTE TIME AND EFFORT SUPPORTING THE CHURCH IN DIVERSE WAYS."



MARJORIE MORGAN LICENSED LAY MINISTER

Lay Minister for 31 years and long-term resident of Stanton St Quintin.

"I lead non-Eucharistic services once or twice a month and love the seasonal opportunities to speak about Jesus."



HENNY METTERS LICENSED LAY MINISTER

Licensed as Lay Minister in 2005.

"Henny takes services once or twice a month. I am currently leading an Alpha Course and I like contemporary and Celtic forms of service."



JOHN BORDISS LICENSED LAY MINISTER IN TRAINING

John will be licensed in October 2026. He is a retired PCSO and has an interest in men's mental health and looks forward to the opportunity to develop this ministry, which is a real issue in farming communities.



HELEN DAVIES LICENSED LAY MINISTER

Licensed in 2021.

"I enjoy supporting the Gauzebrook group of churches by taking Morning Praise, informal services of the word, school assemblies, Evensong, and funerals."

I am normally available for 2 services a month. I am sub-warden for Licensed Lay Ministers for the deanery and have completed a course in Spiritual Direction."



BECKY FISHER LICENSED LAY MINISTER

Appointed Rural Schools and Churches Worker in 2012, but although now retired, continues to serve our schools and families in a voluntary capacity

"I am a Godly Play Advocate and would like to have time to do more Godly Play across the group. As LLM I lead worship on two Sundays a month."

ADMINISTRATIVE SUPPORT AND COMMUNICATION

The Gauzebrook Group relies on many volunteers who provide valuable support, often unseen or unnoticed by many. Collectively, our volunteers provide countless years of experience, as well as being an active link with the villages and communities of the Group.

We share a part-time (20 hours a week) Administrator with the nearby Braydon Brook Group. This arrangement works well, as both groups gain from the shared work experience and knowledge. Our administrator is the main public point of contact for the Group and supports the two incumbents and ministry teams. As well as being the point of contact for the group for weddings and funerals, our administrator's work includes co-ordinating Diocesan fees for the Group, the Group Diary, preparation and distribution of the weekly electronic newsletter (the Gauzebrook Gazette) and website postings.

The office is located adjacent to Malmesbury Abbey, with which the Group has close connections.

The Group uses a variety of internal and external communication methods including:

- ♦ The Churchwardens WhatsApp group which is improving rapid communication of essential information and last minute changes.
- ♦ A weekly email newsletter to 200 addresses on the Group distribution list, giving details of services for the coming weekend and the following week. Some parishes print a small number of these for physical distribution;
- ♦ Articles and publicity in village magazines such as the Cliffhanger (Sherston), Hullavington News (Hullavington); Community Matters (Luckington by email);
- ♦ Pew sheets and information for visitors, inside churches and on notice boards;

- ♦ Christmas cards detailing the seasonal activities and worship;
- ♦ Social media (Gauzebrook Facebook page), and shared postings onto village pages;
- ♦ Websites.



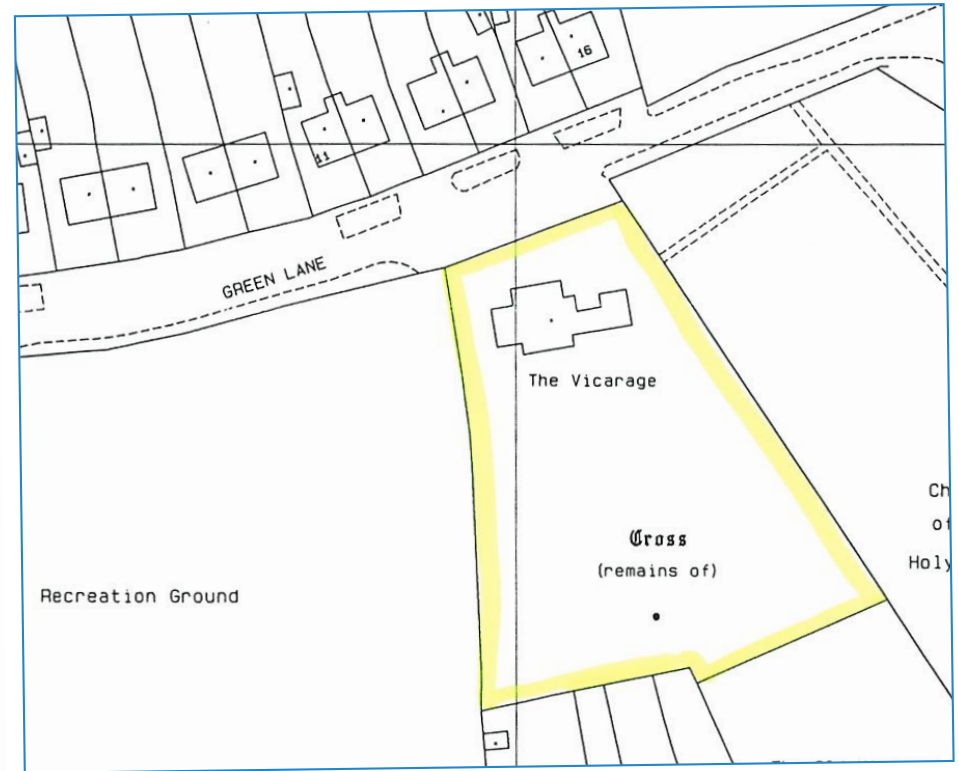
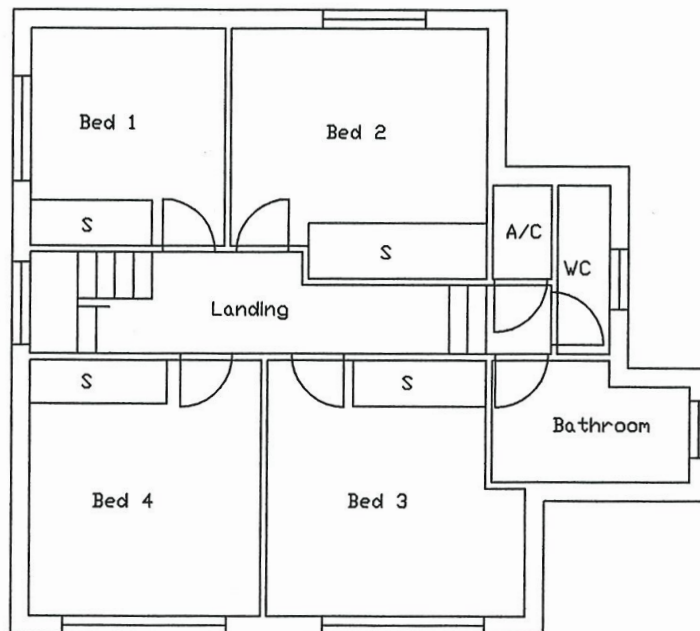
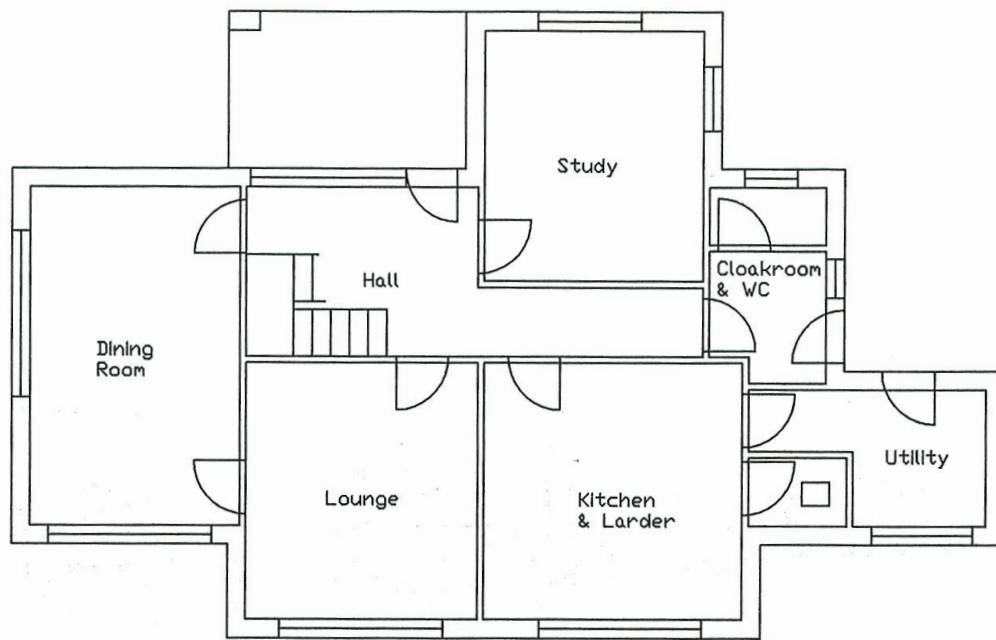
THE RECTORY

It is in the village of Sherston, 200 metres from the local primary school (www.sherstonprimary.co.uk) in one direction and 200 metres from the High Street in the other. Sherston is an attractive Cotswold village that is frequently included in lists of desirable, popular or top villages in the country by newspapers and journals. The village has a Post Office and Co-op store, two pubs, hairdressers, coffee shops, takeaway restaurant, motor repair garages and many other businesses. The village and its environs have numerous active clubs and societies for all ages. Many villagers and visitors take part in the annual Boules festival held on the High Street.

The vicarage is a four bedroomed 1970s building to the rear of the Church, and adjacent to the Pennymead Recreation Ground. The property was extensively refurbished in 2020 with a new roof, kitchen, bathroom, internal and external doors and windows, boiler and radiators, and carpets installed. There is a large garden, with lawn, flower and vegetable beds.

Sherston is 12 miles from Chippenham, 17 miles from Bath, 5 miles from Tetbury and Malmesbury. Nowhere in the benefice is more than 15 minutes' drive from the Vicarage (subject to floods, tractors and other rural delights.) Visiting all the churches requires a circumnavigation of about 20 miles.





THE CHURCHES OF THE GAUZE BROOK GROUP

OUR BIGGER CHURCHES

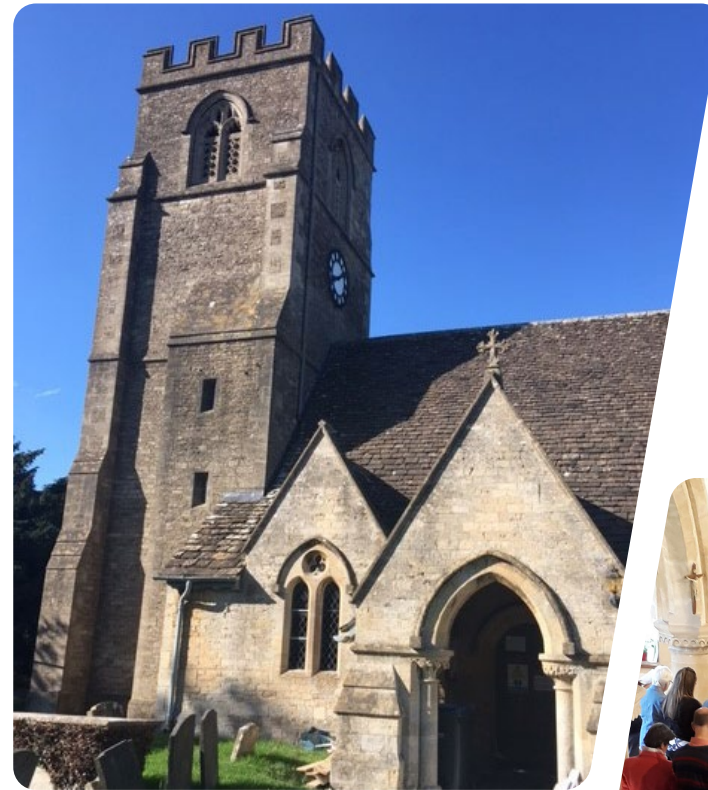
HULLAVINGTON - THE CHURCH OF ST MARY MAGDALENE

Hullavington is a vibrant, friendly, and increasingly diverse community. In addition to our active church, there is a village hall, shop, post office, garage and, on its outskirts, a popular café and brewery tap bar. It is the second largest village in the Gauzebrook Group with a population of about 1350, and is set to grow as planning permission has been granted for seventy houses adjacent to the school.

Educational facilities in the community are excellent with a Church of England Primary and Nursery School, both with a high proportion of pupils from service families.

St Mary Magdalene Church, re-ordered in 2018, is in the centre of the village and provides a stunning venue for worship. The church offers a warm, inviting, and flexible space that is shared with the community and used most days of the week. Whilst the Parish Council maintains the churchyard, a group of volunteers maintains the building and its environs. Residents from across the village come together to enjoy a sense of community and demonstrate their care for the grounds and the fabric of our lovely church.

The weekly Friday coffee and cake shop in church is supported by a broad range of people for chat and fellowship. The Hub, on the first Saturday morning and lunchtime each month, is an opportunity for those working during the week to enjoy our church's hospitality.



LUCKINGTON – THE CHURCH OF ST MARY AND ST ETHELBERT

Luckington has a population of 600. The village hall is run by its own committee, and a playing field with separate play area are cared for by the local playground committee. The village pub houses the village shop.

St Mary and St Ethelbert Church is a beautiful Grade I listed building of historic interest with a thirteenth Century tower. Some years ago, it was used as the 'wedding' setting in the BBC's version of 'Pride & Prejudice', and it has recently been used again for filming another 'Jane Austen' wedding.

We have services twice a month. The congregation, although small, has now been swelled by members of the village's recently closed Methodist church and as a result, our services now tend to have a more ecumenical feel.

In addition to the normal service collection, funds are raised via regular giving, and by profits from such events as Christmas parties, Open Gardens and concerts. The PCC, together with the Playground and Pre-School Committees, arrange the annual village fete and barbecue Party, sharing the proceeds together.





SHERSTON MAGNA - THE CHURCH OF THE HOLY CROSS

About 1800 people live in the parish of Sherston, which includes the hamlets of Willesley and Knockdown. There is a strong sense of community and a wide range of local organisations and village events which are always well supported.

We take pride in the Church of England liturgy in its traditional form and this is reflected in our preference for regular Eucharist services. Festival and special services are very well-attended, attracting the wider community.

We have very good links with the local Congregational and Methodist Churches, sharing services and house groups and social events and our monthly warm space initiative.

We hold a weekly café in church, and we are able to host village events, such as the biennial Arts festival in our North Aisle, which makes the building an asset to the community. As well as members of the congregation, many other volunteers help us to care for our church fabric and we value this very highly. Our fund-raising events are as much about working within the local community as raising money. We have recently formed a Living Churchyard Group, which is linked to our Eco-Church activities and the work of Sustainable Sherston. Many village residents donated generously to our recent maintenance projects, including roof repairs, which helps us to remember that our church is both geographically and socially in the centre of the village.



STANTON ST QUINTIN - THE CHURCH OF ST GILES

Stanton St Quintin's 250 houses are in Stanton St Quintin and Lower Stanton St Quintin, separated by the A429. The church's Parish Hall is midway between the two parts of the village and is used regularly by various community groups and by the church for social activities.

The church building is Grade II* listed and dates from the twelfth to the fifteenth century. The church was reordered in 2020 and includes an audio visual system, heating, a toilet, and kitchen. The churchyard is maintained as a wildlife haven and has won an award as a Living Churchyard. We plan to use funds from a legacy to install solar panels to offset future electricity costs.

Our services follow a traditional format but are relaxed and welcoming. We serve refreshments after services to encourage fellowship and build relationships. We want to support regular worshippers, visitors and newcomers to the area, including wedding couples at the hotel next door.

The church enjoys good links with the school and this relationship is important: a pupil was recently heard to describe St Giles as "My school church". The church is appreciated and valued by the community with the church and community joining together, not only to raise money for the hall, the church, the school, the war memorial and outside charities, but to promote and maintain fellowship. Church members support the village social activities.

Our Thursday afternoon coffee shop offers a warm welcome to residents and visitors and occasional Saturday morning sessions include those unable to attend on Thursdays. We give an annual tea party to recognise and thank all our volunteers for their support.



OUR SMALLER CHURCHES

Alderton, Foxley, Easton Grey and Norton together comprise an informal cluster of churches each with services once per month, or less. Effectively they equate to a workload of a single church in terms of Sunday services. We are actively exploring combining forces for governance, as they have very small PCCs.

ALDERTON – THE CHURCH OF ST GILES

Alderton, about two miles from both Sherston and Luckington, is a village of 35 homes and two working farms. As well as many listed houses it is known for its duck pond, home to a variety of specialist duck species.

St Giles, Alderton, is a twelfth century Grade II* listed building. Five of the chest tombs in the graveyard are also Grade II listed. The church was extensively rebuilt during the renovation and extension in 1845 to include the addition of its spire, which is visible from some distance. The original features that remained after this include pointed arches, the roof of the nave, the Saxon pillars of the north door and most of the tower. The bells were rehung as a millennium project and the roof, and tower were restored eight years ago.

There is a morning service once a month, and special services at Festivals.

“WE FEEL WE BELONG
TOGETHER; WE ARE STRONGER
TOGETHER SHARING
FELLOWSHIP AND FAITH.”



EASTON GREY

Easton Grey is an unspoilt beautiful old village nestling in a deep green hollow. The river Avon meanders by a 5 stone arch bridge dating from the sixteenth century. There are approximately 30 historic houses with around 80 residents of all ages.

Our small Grade II listed church stands just above the village in the grounds of Easton Grey House. It has a fifteenth century west tower; the rest, including the box pews, was a rebuilding to designs approved in 1836.

The church, always open for people to enjoy, is well visited and appreciated, judging by the comments in the visitors' book.

In 2019 the church was designated as a festival church. The church is well loved in the village, and tasks such as minor repairs, grass cutting, church cleaning, flower arranging, and Christmas decorations are carried out by valued volunteers working to their own rota.



FOXLEY WITH BREMILHAM

Foxley is the closest of the Gauzebrook parishes to Malmesbury and is united with the even smaller parish of Bremilham. Foxley is centred on a beautiful twelfth century church whilst, at twelve feet square, Bremilham boasts the smallest church in England in use, with its regular annual Rogation Day service for the Gauzebrook Group. The congregation is outside whatever the weather! The Bremilham church building is the property of one of the two farms in the village and is not the responsibility of the PCC.

Foxley is a close-knit community of about eighty including young families and those who have lived in the village almost all their adult lives. There is one service a month in the Parish Church, attended by a faithful congregation of eight to ten. These numbers are swelled to sixty for Christmas and Easter and our special services such as celebrating Baptism or the Pets' service.

We all celebrate when there is a baptism or wedding in the village. Community is important here and the church is central to its cohesion. The village community assists with tidying the churchyard. Our harvest service concludes with an auction of produce, and funds raised are donated to the Wiltshire Air Ambulance and other local charities.



NORTON – THE CHURCH OF ALL SAINTS

Norton is a small Wiltshire village with twenty-eight houses and a population of sixty. It has a beautiful Manor House, and two working farms. The church is in the centre of the village.

The congregation of Norton numbers about twenty regular worshippers each month. We continue to benefit greatly from the support of 'The Friends of Norton' at our monthly service. We use recorded music during services. Worship uses contemporary liturgy with a relaxed, reverent and sincere approach. The Harvest and Christmas celebrations are well attended.

We have increased our involvement with the community, receiving support to maintain the churchyard. Our local volunteers form a regular rota for cleaning, flowers and refreshments after each service.

Funds have been allocated to building repair and maintenance, particularly the rainwater goods, roof, and interior redecoration. We want to be in a strong position to maintain and improve the church fabric to preserve it for future generations, as we see the church as a place of peace and an ecumenical house of prayer, worship and retreat where all are welcomed, whether from the local community, Gauzebrook or further afield.



"THE CHURCH IS EXTREMELY WELCOMING OF MY YOUNG FAMILY."

GAUZEBOOK GROUP PATTERN OF WORSHIP

We have used the interregnum to reconsider our arrangements for services, to make best use of our resources and to provide worship and the sacraments throughout our communities. This is an ongoing process that we expect will continue to adapt and change. The rota reflects that it is not possible for the smaller churches to have services each Sunday.

Most services across the Group are Common Worship. We offer a monthly morning service of Holy Communion for all the parishes on each second Sunday and a Service of the Word when there is a 5th Sunday. The venue for these services rotates across the benefice. We hold an evening BCP Communion for the benefice in Sherston on the first Sunday. Evening prayer with variations (including Taize, Celtic and Iona) is held on the second Sunday each month in Hullavington, with a BCP Evening Prayer offered in Sherston on the 4th Sunday.

During the winter months (November – February) we are starting our evening services at 16.30 instead of the traditional 18.30.

Our annual Rogation service is held at Bremilham Church, part of Foxley parish.



| PARISH | 1ST SUNDAY | 2ND SUNDAY | 3RD SUNDAY | 4TH SUNDAY | 5TH SUNDAY |
|---------------------------|---------------------------------------|--|---------------|--|---|
| GROUP MORNING SERVICE | | 10:00 Location varies each month | | | 10:00 Location varies each month |
| HULLAVINGTON | 11:00 | | 11:00 | 11:00 | |
| LUCKINGTON | 11:00 | | 11:00 | | |
| SHERSTON | 9:30 | | 9:30 | 9:30 | |
| STANTON ST. QUINTIN | 9:30 | | 9:30 | 9:30 | |
| ALDERTON | 9:30 | | | | |
| EASTON GREY | | Festival Church | | | |
| FOXLEY | | | 11:00 (BCP) | | |
| NORTON | | | | 11:00 | |
| GROUP EVENING SERVICES | 18:00 Sherston BCP Communion | 18:00 Hullavington Evening Prayer | | 18:00 Sherston BCP Evening Prayer | |



ROLE PROFILE

ROLE TITLE Priest in Charge of Gauzebrook Group of Churches (Rector Designate)

NAME OF BENEFICE Gauzebrook

DEANERY North Wiltshire

ARCHDEACONRY Malmesbury

ROLE PURPOSE

GENERAL

To nurture the faith and discipleship of our existing church members and to teach, guide and further develop our approach to evangelism by leading and working with the churches and their communities.

RESPONSIBILITIES

LEADERSHIP

- ♦ Develop through consultation the vision for the Group that will enable it to look to the future with optimism
- ♦ Model good teaching, prayer and discipleship
- ♦ Lead the Gauzebrook Group in its continuing development of mission
- ♦ Provide ongoing structure and guidance to the Ministry Team
- ♦ Oversee the management of the Group Administrator

- ♦ Train, supervise and encourage curates, those on training courses and those exploring their vocation in the church and other areas of lay leadership
- ♦ Encourage and continue partnerships with our church schools
- ♦ Continue to review service pattern to reflect the ministry team capacity and availability
- ♦ Develop revised governance for the 4 smaller parishes
- ♦ Develop role of Benefice Council

WORSHIP

- ♦ With the support of the Ministry Team lead services and occasional offices throughout the parishes of the Group
- ♦ Deliver both traditional and modern styles of worship
- ♦ Provide a focus and direction for the Group services

DISCIPLESHIP

- ♦ Lead, encourage and assist people in their spiritual development through a commitment to prayer and Bible study
- ♦ Mentor with understanding and sensitivity- being prepared to challenge where necessary
- ♦ Proactively use the talents and goodwill of the village communities in order to grow the Kingdom of God
- ♦ Encourage, facilitate and develop our small groups programme
- ♦ Provide opportunities for individuals to explore their personal beliefs and development
- ♦ Encourage communities to give generously in response to God's generosity

PASTORAL CARE

- ♦ Take an active role in pastoral care and visiting
- ♦ Develop the pastoral care structure within the Group

ADMINISTRATION AND PARISH ORGANISATION

- ♦ Work in collaboration with the PCCs, Churchwardens, Group Council and the Administrator to ensure effective organisation of the benefice
- ♦ Attend PCC meetings as appropriate, using personal judgement to assess when attendance is necessary and at other times trusting in the qualities of PCCs members to ensure the effective function of individual councils
- ♦ Advise on and direct building initiatives and financial management systems when required
- ♦ Affirm and abide by national, diocesan and Group policies and legal requirements

SCHOOLS

- ♦ Visit schools, lead worship, encourage and co-ordinate the work of the volunteers in schools
- ♦ Encourage religious education and, through contact with schools, develop a greater understanding of the role of the church within the local communities

OUTREACH

- ♦ Maintain and develop strong links with churches, schools, local councils, community representatives and organisations that function to support each parish
- ♦ Encourage connection between the church and the community in varied and exciting ways
- ♦ Develop fresh mission ideas in partnership within The Mission Area initiative
- ♦ Guide and further develop our approach to evangelism
- ♦ Build upon the already established initiatives around our work with children and young people

SELF-DISCIPLINE, SPIRITUAL DISCIPLINE AND OWN DEVELOPMENT

- ♦ Give attention to time for personal study and renewal in all aspects of ministry and life
- ♦ Participate in the Ministerial Development Review and engage in appropriate Continuing Professional Development
- ♦ Follow an appropriate pattern of work that enables a full spiritual and personal life, as well as meeting the demands of the ministry
- ♦ Take care of your personal well-being, including physical, emotional, mental, and spiritual health, as well as building a good repertoire of spiritual and psychological strategies for resilience.

PERSON SPECIFICATION

QUALIFICATIONS/ TRAINING

Essential

- ♦ Ordained priest within the Church of England, or a Church in communion with it, or a Church whose orders it recognises
 - ♦ Have satisfactorily completed Initial Ministerial Education
 - ♦ Fully trained in and committed to safeguarding of all in the community and able to work in line with safeguarding policies
-

EXPERIENCE

Essential

- ♦ Leading a team and the church in setting and holding vision
- ♦ Evidence of collaborating effectively with other leaders in a Deanery and being someone who engages positively with the Diocese and its mission

Desirable

- ♦ Working with multiple churches to develop vision
 - ♦ Encouraging and nurturing families with young children
 - ♦ Enabling lay involvement in leadership and ministry
 - ♦ Working in a multi parish or Benefice context
 - ♦ Effective work in a rural setting, engaging with communities and organisations outside the church
-

“THEY ARE A WONDERFUL,
WELCOMING, CARING
COMMUNITY.”

| | |
|--|---|
| <p>KNOWLEDGE/ SKILLS AND COMPETENCIES</p> | <p>Essential</p> <ul style="list-style-type: none"> ♦ The ability to identify and respond to opportunities for mission in rural environments ♦ A person who can excite, envision and enthuse ♦ Leading with integrity and creativity a wide range of styles and approaches to worship ♦ The ability to motivate and inspire, developing new ideas and initiatives to encourage worship and growth within rural communities ♦ The ability to support existing Christians in evangelism and discipleship so that members of the parishes are encouraged to show God's love in action ♦ A good teacher, preacher and presenter of the gospel in accessible ways |
| <p>GENERAL ATTRIBUTES</p> | <p>Essential</p> <ul style="list-style-type: none"> ♦ A collaborative leader who is adaptable, resilient and positive ♦ Outward-facing, who naturally builds trust with others and connections with the wider community ♦ Faithful in prayer and grounded in Scripture and tradition ♦ Someone who knows where their strengths lie and humble enough to know when to seek help <p>Desirable</p> <ul style="list-style-type: none"> ♦ Enthusiasm for exploring opportunities for groups and individuals to develop their faith outside of gathered worship ♦ An approachable listener, with a good sense of humour |
| <p>OTHER</p> | <p>Essential</p> <ul style="list-style-type: none"> ♦ Care and development of themselves and their personal relationships, including adequate time for family life, friendship, recreation, renewal and personal health, through taking a weekly day off and their full holiday entitlement ♦ Full participation in the emerging Transforming Church Together coaching and wellbeing programme |

PARISH INFORMATION

| | EST POPULATION 2025 | ELECTORAL ROLL 2025 | USUAL SUNDAY ATTENDANCE 2024 |
|------------------------|------------------------|------------------------|---------------------------------|
| ALDERTON | 78 | 17 | 8 |
| EASTON GREY | 80 | 0 | Festival Church |
| FOXLEY | 80 | 21 | 10 |
| HULLAVINGTON | 1350 | 70 | 30 |
| LUCKINGTON | 600 | 54 | 15 |
| NORTON | 60 | 42 | 21 |
| SHERSTON | 1800 | 64 | 33 |
| STANTON ST. QUINTIN | 900 | 42 | 21 |

| OCCASIONAL OFFICES AVERAGE PA 2019 TO 2024 | |
|---|----|
| BAPTISMS | 11 |
| WEDDINGS | 9 |
| FUNERALS | 22 |

“GROUP SERVICES...GIVE US AN IMPORTANT CHANCE TO COME TOGETHER FOR WORSHIP, AND HELP TO CEMENT OUR IDENTITY AS A WIDER GROUP WITHIN THE WORLD-WIDE CHURCH: ‘THOUGH WE ARE MANY WE ARE ONE BODY’”

ATTENDANCE AT FESTIVAL SERVICES

| | CHRISTMAS 2024 | CAROLS 2024 | EASTER 2025 | HARVEST 2025 | REMEMBRANCE 2025 |
|------------------------|-------------------|----------------|----------------|-----------------|----------------------------|
| ALDERTON | 51 | 35 | – | 8 | Jointly at Sherston |
| EASTON GREY | 33 | – | 22 | 11 | Jointly at Sherston |
| FOXLEY | 20 | 45 | 7 | 11 | Jointly at Sherston |
| HULLAVINGTON | 209 | 110 | 60 | 31 | 88 |
| LUCKINGTON | 55 | 38 | 35 | 40 | 80 |
| NORTON | 36 | – | 11 | 19 | Jointly at Hullavington |
| SHERSTON | 282 | 115 | 142 | 53 | 400 |
| STANTON ST. QUINTIN | 68 | 100 | 55 | 36 | 67 |

“OUR CAROL SERVICE ALLOWS
US TO ESCAPE THE STRESS
AND GLITZ OF THE MATERIAL
CHRISTMAS.”



FINANCIAL INFORMATION

PARISH SHARE PAYMENTS 2021 - 2024

| | 2021 | 2022 | 2023 | 2024 |
|------------------------|---------|---------|---------|---------|
| ALDERTON | £1,000 | £1,100 | £500 | £547 |
| EASTON GREY | £1,000 | £1,008 | £1,008 | £1,008 |
| FOXLEY | £1,500 | £1,500 | £1,500 | £1,500 |
| HULLAVINGTON | £21,450 | £21,990 | £22,020 | £22,020 |
| LUCKINGTON | £7,920 | £8,120 | £8,160 | £8,160 |
| NORTON | £3,074 | £2,652 | £2,656 | £2,244 |
| SHERSTON | £38,694 | £28,580 | £28,200 | £28,200 |
| STANTON ST. QUINTIN | £14,310 | £14,670 | £14,670 | £14,670 |
| BENEFACTE TOTAL | £88,948 | £79,620 | £78,714 | £78,349 |

INCOME AND EXPENDITURE 2021 - 2024

| | INCOME 2024 | EXPENDITURE 2024 |
|------------------------|----------------|---------------------|
| ALDERTON | £14,300 | £6,191 |
| EASTON GREY | £4,157 | £3,993 |
| FOXLEY | £5,756 | £6,485 |
| HULLAVINGTON | £61,415 | £47,532 |
| LUCKINGTON | £15,647 | £13,417 |
| NORTON | £9,387 | £9,560 |
| SHERSTON | £82,636 | £82,668 |
| STANTON ST. QUINTIN | £30,257 | £24,513 |



“THE GAUZE BROOK GROUP OF CHURCHES IS VITAL TO OUR SENSE OF COMMUNITY.”

NEXT STEPS

Thank you for reading this far, we are praying that that God is putting a deep sense of call into the heart of the person who will be our next Priest in Charge.

If you would like an informal conversation about the role then please contact
The Archdeacon of Bristol, Becky Waring,
becky.waring@bristoldiocese.org.

To apply for this role, please complete the application at www.cofepathways.org and submit it before the advertised deadline.



DIOCESE OF BRISTOL

TRANSFORMING CHURCH. TOGETHER.

Diocesan Office, First Floor, Hillside House, 1500 Parkway North, Stoke Gifford, Bristol BS34 8YU 0117 906 0100 | www.bristol.anglican.org
The Bristol Diocesan Board of Finance Limited | Reg. in England: Charity 248502, Company 156243

