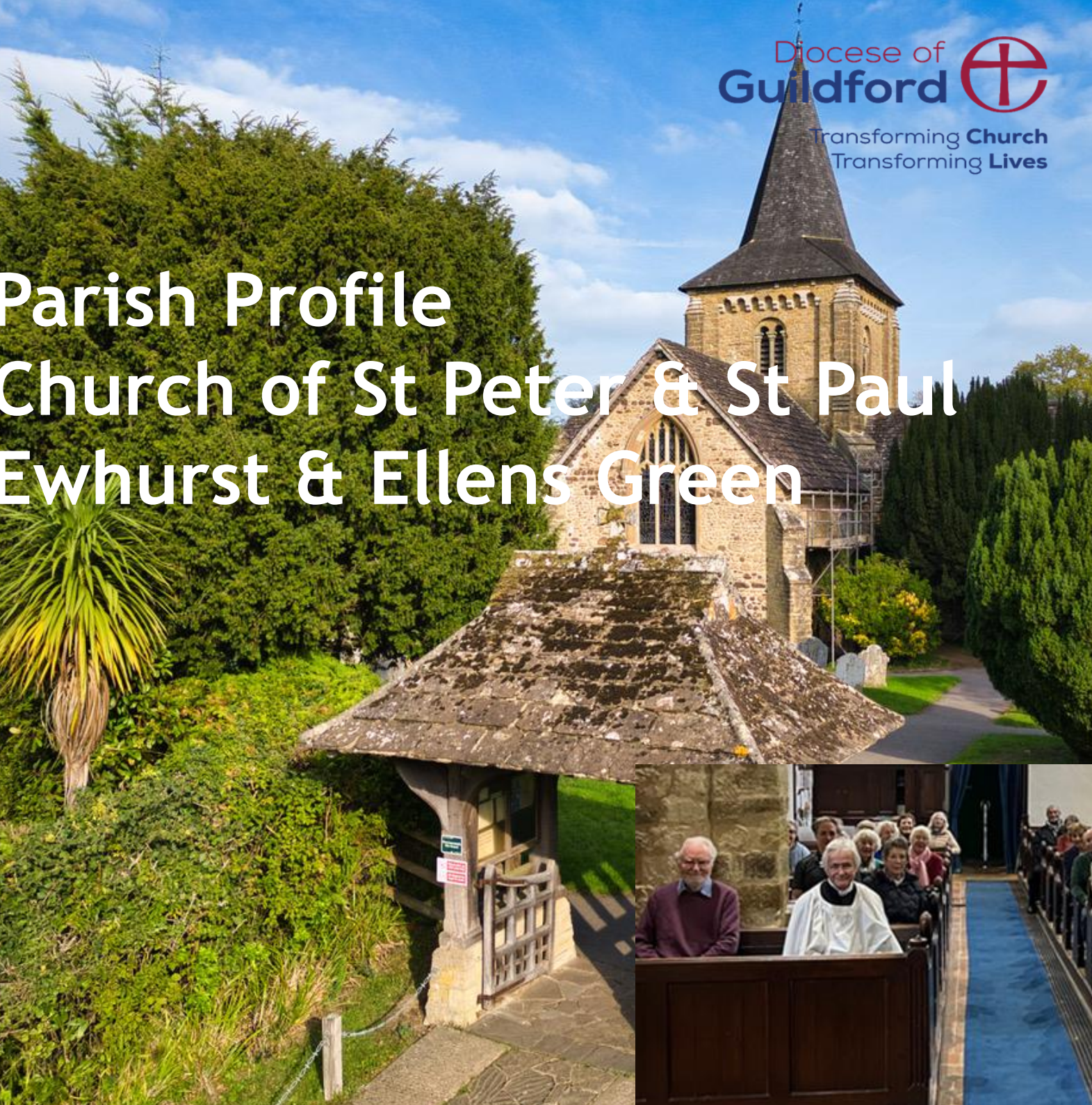


Parish Profile Church of St Peter & St Paul Ewhurst & Ellens Green



From the Area Dean



The hall was so packed on a dark, filthy, wet, winter's afternoon that more tables and chairs had to be laid out. All those gathered wanted to have a say in their new Priest-in-Charge. Here is a community longing to be loved and to share their life with someone who will give them a fresh start and renewed hope.

Ewhurst is a unique semi-rural community, in a beautiful setting, where the boundaries between church and village community are wonderfully blurred. Recent pastoral reorganisation has created a more focussed village parish, and we are seeking and praying for a House for Duty Priest-in-Charge who will work with the faithful people in leading and shaping the next chapter.

Are you the person called to walk with the people of Ewhurst into this next season? We pray that it might be so – they could be your people; this could be your place. If you'd value an informal conversation about this post, please do not hesitate to be in touch with me at revsarah@parishofshere.com

Revd Sarah Hutton

Area Dean of Cranleigh

From the Bishop of Dorking & Acting Bishop of Guildford



It is a great privilege to live and serve in the Diocese of Guildford. Our part of Surrey and Hampshire (including a parish in London and Sussex) combines the stunning beauty of the North Downs with close proximity to central London. This makes it a highly desirable place to live. It has seen a considerable increase in population in recent years which continues to rise with extensive building of new houses.

We are a very friendly diocese with strong relationships across parishes, schools and chaplaincies. In the last five years, we have invested significantly in clergy wellbeing. We launched the wellbeing covenant in 2021 and, since then, we offer spiritual direction, clergy mentoring and pastoral supervision. We also provide clergy counselling when needed. As bishop, I take the love and care of clergy very seriously.

The Diocese has a strong vision rooted in *Transforming Church, Transforming Lives*. This was the result of considerable consultation in 2015 and was updated in 2023 when we discerned three priorities: *Growing Discipleship, Growing Diversity, and Growing Community*. Each parish is asked to consider what this overarching vision might mean in its local context and express it in a Church Development Plan.

There is significant support of parishes through the central team in Church House Guildford. In 2020, we launched the Parish Needs Process. This is our unique support system which recognizes that each parish in the diocese is different and it seeks to journey alongside each one of them, supporting in a way that is rooted in particular needs - whilst seeking to build a supportive learning community across the diocese.

Building on training provision that has existed for some time in the Diocese of Guildford, in 2026 we launched St Martha's College. This seeks to support our parishes in equipping leaders for all sorts of ministries (including ordained ministry). Its most exciting recent venture has been the two-year *Foundations in Ministry Programme* which has seen over 120 people explore calling and formation.

Whilst we have seen considerable growth in many parts of the diocese over recent years, our greatest challenge since the pandemic has been recovery of ministry to children and young people. We are in the process of prioritizing these areas – as we currently rewrite our children's strategy and have launched the Youth Catalyst Programme which is providing an exciting platform for young people to explore faith.

We are therefore always looking for clergy with a proven ability - or at least the clearest potential - in leading change, fostering a vocational culture and growing the church younger, so that our vision of a *Transforming Church, Transforming Lives* might be more fully realised.

The diocese has been blessed with very able leadership for the last decade through the ministry of Bishop Andrew Watson, whose untimely death in March 2026 caused considerable grief for us as a diocesan family. Inspired by his example, however, we are committed to continue to 'run with perseverance the race that is set before us, looking to Jesus, the pioneer and perfecter of faith'.

Wishing you every blessing in your discernment – and please do not hesitate to get in touch with one of the archdeacons if we can help in any way.

Every blessing

+Paul

The Rt Revd Paul Davies

Meet the Team

Liz Tingley
Churchwarden



Martin Lockwood
Churchwarden



Martin Parish
Administrator



Rosemary Mason
PTO



Val Henry
Director of Music

For our Priest-in-charge

WE SEEK SOMEONE WHO:

- Can share their faith easily and will help us to do the same
- Values traditional worship yet enjoys experimenting with other worship styles
- Loves spending time with people of all ages and stages
- Will be a bridge builder - within the church and into the community
- Enjoys and understands rural parish life
- Is excited at the opportunity of growing families and children ministry

WE CAN OFFER:

- A team including a part time parish administrator and PTO Priest
- Great potential for growing children and family's ministry with the local C of E school becoming a Primary (up to 11 years) in September 2026
- A church ripe for Forest/Muddy Church
- An active and vibrant village community
- Numerous opportunities for community engagement
- A relatively new, well-equipped dedicated hall & office right next door to the church
- A gracious rectory

The position will be under Common Tenure, based upon working Sundays, plus two other days per week.

Parishioners Voice

Parishioners have expressed a strong desire for a Priest-in-Charge who offers spiritually mature and enthusiastic leadership, with a pastoral heart and a visible presence in parish life. Key qualities include a commitment to pastoral visiting, empathy, and a person who enjoys being with people whether old or young.

There is a clear call for someone who is welcoming and inclusive, interested in people, and willing to lead gently. There is a desire that the new Priest-in-Charge should actively encourage engagement with families and foster close relationships with the infant school and preschool groups. A creative, pastoral approach is desired together with a passion for placing the church at the heart of the community. Parishioners hope for a leader who will help grow the church family, deepen connections across the community and unite the parish under a shared vision for reaching out into God's world with his love.



Our Story

The Parish

We became the three church parish of Ewhurst, Oakwood and Forest Green in 2018. As this arrangement was found not to be satisfactory, in 2025 the Parish of Ewhurst and Forest Green was re-created. This pastoral reorganisation means we are seeking a Priest-in-charge for a new stage in our life as a church community. Nearby is the large 'village' of Cranleigh with St Nicholas' Church at its heart. In the future, we are looking to work more closely together.

The parish consists of Ewhurst which has about 2360 residents and Ellens Green which is a hamlet of a few hundred inhabitants. The latter has the Ellens Green Memorial Hall which is a delightful amenity.

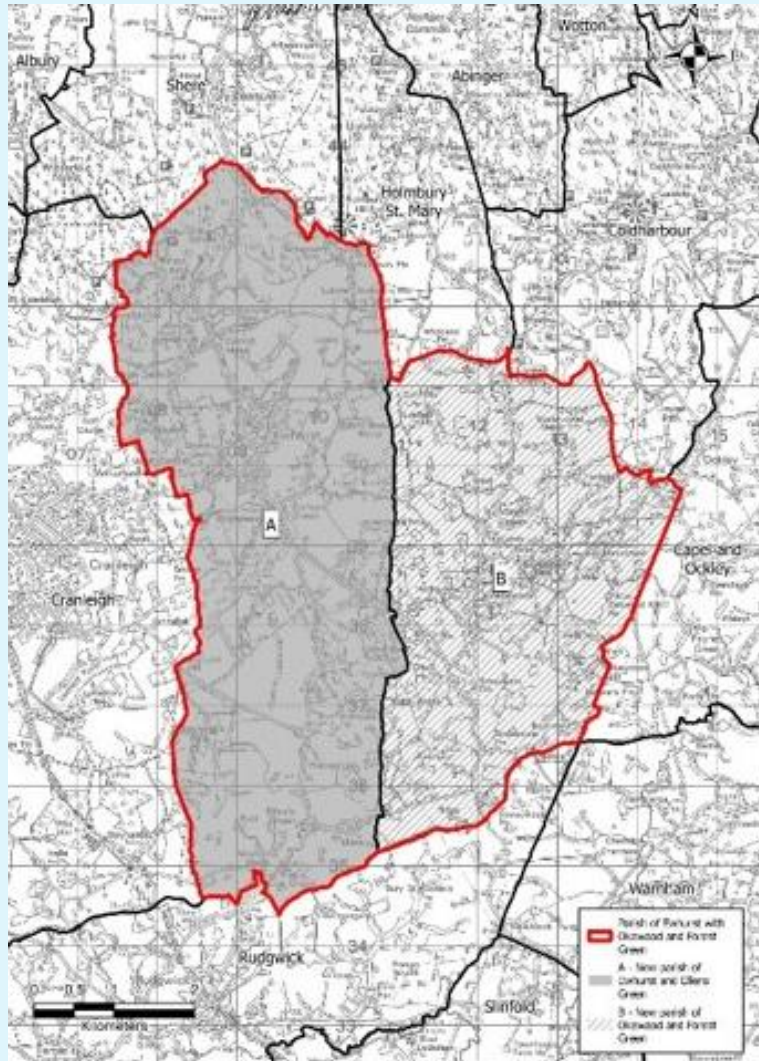
As a church we want to grow in spirit and in numbers building upon existing relationships and creating new ones with the vibrant local village community in which we are based.

Local Area

If you love the countryside, you will love being in Ewhurst!

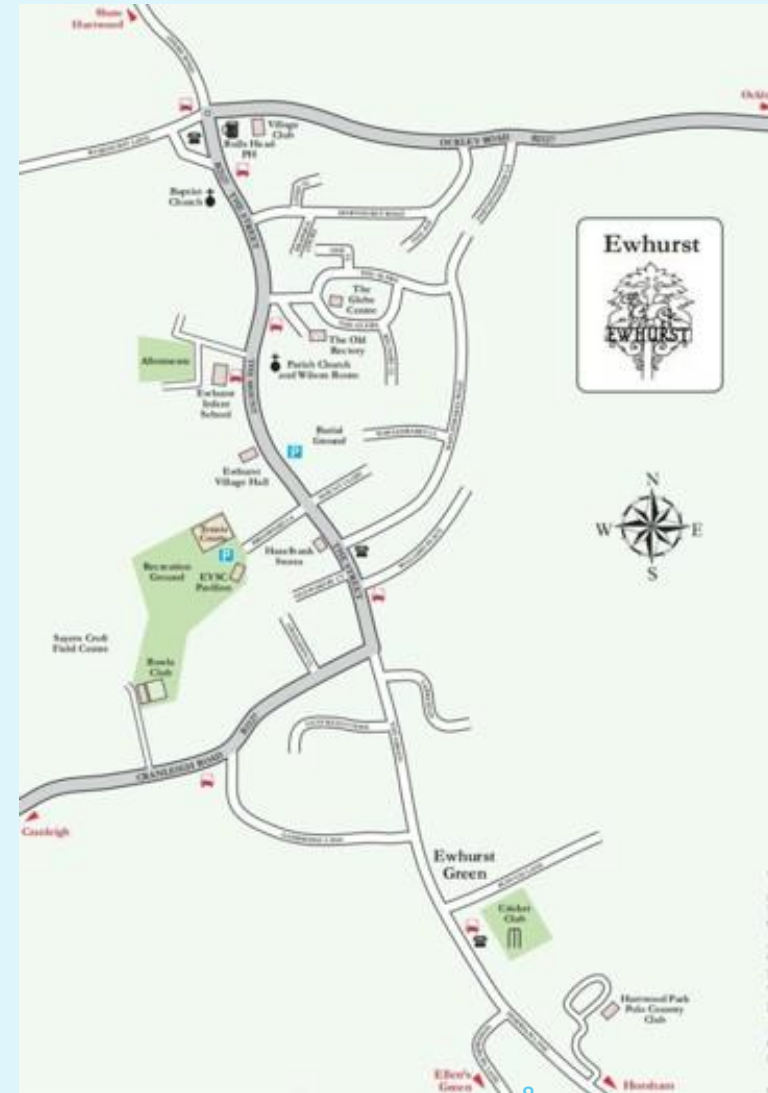
Geographically, all communities in the Parish enjoy wonderful countryside with our proximity to the Surrey Hills National Landscape. The miles of footpaths and bridleways are perfect for outdoor pursuits, especially cycling, walking and horse-riding. The area has many attractive villages and excellent amenities available – whether for shopping, dining or culture. Ewhurst is a large village with good access to the market village of Cranleigh and the University town of Guildford, with good rail access to London and an excellent range of educational facilities from nursery and pre-school through to secondary education, both state and private. There has been significant new housing built in Ewhurst over the past 10 years.

Parish of Ewhurst and Ellens Green



Map from United Eye. Reproduced by permission of Ordnance Survey on behalf of HMSO. Crown copyright and database right 2024. All rights reserved. Ordnance Survey Licence number 100019919

Ewhurst Village Plan



Our Worship

1 st Sunday	2 nd Sunday	3 rd Sunday	4 th Sunday	5 th Sunday
10.30am Holy Communion Common Worship	9am BCP Holy Communion 6pm Choral Evensong	10.30am Holy Communion Common Worship	9am BCP Holy Communion	9am BCP Holy Communion



Our worship is mainly traditional, but we are open to new ways of worship and outreach.

Special Services

These include:

- Monthly communion service Old Rectory Care Home
- All Souls' Service
- Christingle with the school
- Carols round the Crib
- Nativity Trail
- Mothering Sunday with posies
- Palm Sunday Donkey Walk with the Baptist Church
- Good Friday Walk of Witness with the Baptist Church
- Easter Sunrise on Pitch Hill with the Baptist Church
- Summer Songs of Praise Old Rectory Care Home garden



The Choir

Our modest yet committed choir leads the singing during each Common Worship service and Choral Evensong. They also take part in special services and perform at the Summer Songs of Praise held in the Old Rectory garden, an event organized and directed by Val Henry, our Director of Music. Additionally, the choir sings at weddings, funerals, and various special occasions, and during the Christmas season, they perform carols throughout the village.

Rehearsals are held every Friday evening in the church during term time.



Val Henry
Director of Music



Church Bells and Ringers

Ewhurst has a rich heritage of bell ringing, with its oldest bells dating back to the 15th century, making them some of the oldest in Surrey. The village takes pride in its full peal of eight bells.

Bells are rung each Sunday and are also played upon request for weddings and funerals.

Practice sessions for bell ringing are held every Wednesday evening, welcoming new young participants to join.



Our Buildings

▶ St Peter and St Paul Church Building

The Church is a Grade 1 listed building. It has stood at the heart of our village both as a building and part of the community for around nine centuries. The oldest surviving walls of the Norman nave date back to 1140 making it one of the oldest churches in Surrey. Its peace and charm make it a popular choice for weddings and for other celebrations. There are services each Sunday of different styles to meet the needs of our worshippers, young and old. The south transept contains an area for children with books and bags of toys.

▶ The Wilson Room

We have the fabulous resource of The Wilson room which is a welcoming and a popular social area especially for refreshments served after services. The church room was built in 2010 in the churchyard and has easy access from the church and rectory. It has a beautiful oak-beamed, large communal room, a fully equipped servery, disabled toilets and is home to the Parish Office. This has allowed the church to broaden its ministry with a range of activities and groups including our Toddler group, social events, and meetings. Opportunities for use abound.

The Rectory

A great family home set in a large garden.

Accommodation for the new incumbent is Ewhurst Rectory, situated next to the church, in the centre of the village. Double glazing is provided throughout and there is full gas-fired central heating. It provides, on the first floor, a large landing giving access to four double bedrooms, bathroom with shower, a separate WC and airing cupboard. Fitted cupboards are provided in three of the bedrooms and two bedrooms have a wash hand basin. On the ground floor there is a central entrance hall, good-sized living room, dining room, fully fitted kitchen, utility room with its own sink and internal access to an attached garage. An outer hall gives access to study and WC. In front of the house is a tarmac area for parking, with a side area reserved for church disabled parking. The large garden is mainly grass, with a woodland area and includes a long zip-wire.

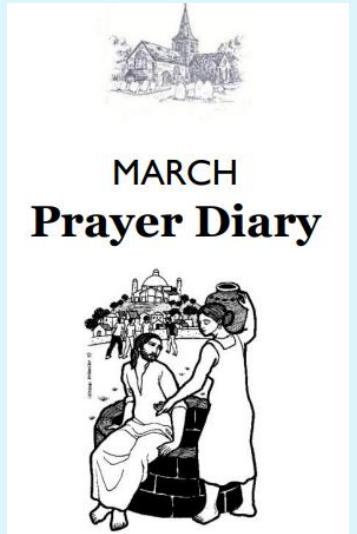


Parish Administration

- ▶ The Church is well served by experienced Churchwardens. During the Vacancy, Rosemary, a local priest with PTO, has been leading our worship.
- ▶ Martin Smith provides part-time admin support for two half days a week and is based in the Parish Office located in the Wilson Room next to the church.

Church Communications include:

- ▶ A weekly pew sheet which is emailed to 150 addresses and published on the website and Facebook
- ▶ A monthly Prayer diary
- ▶ A new website created and updated by Martin, our administrator .
www.ewhurstchurch.org and we are on “A Church Near You”



Small Groups



This is an area which needs attention if we are to grow in our faith as individuals and as a Christian community. Our PTO Rosemary has kept us going by running Lent Groups and a successful Confirmation Group which 4 people attended a couple of years ago. We look forward to more ways to grow in our discipleship.

Ewhurst C of E School

Our parish is blessed to have Ewhurst Church of England Infant School, a successful voluntary aided school. Located exactly opposite the church, currently there are 48 pupils with the expectation it will grow. This is an exciting opportunity for us as a church and village community. On the latest Ofsted report the school is graded 'Good'.

Weekly collective worship is taken in the school by local clergy. At least once a term, usually around festivals, the children, together with their parents are welcomed into the church for a service.



STOP PRESS
Ewhurst C of E Infant School

to become Primary
for children of age 4
years to 11 years
from September 2026

"Our relationship with the local parish church is fundamental to the identity and heartbeat of our school community, rooting our vision in shared Christian values. Working hand-in-hand with our Priest is vital to enriching our pupils' spiritual development, whether through collective worship, faith exploration, or deepening our theological foundations. We seek a compassionate leader who will enthusiastically embrace and nurture this essential partnership, ensuring the continued flourishing of both our church and our school"

Tim Cheesman, Executive Headteacher, Ewhurst C of E (VA) Infant School

Rainbow's End Pre-School

“Rainbow's End is an Outstanding setting providing pre-school education for children aged 2-4. We have a long-standing relationship with the church and often bring the children to see it, noticing how things change at different times of the year, both inside and outside. The children love to sit in the pews and sing and will join in short services. A representative of the church is always invited to our Easter, Harvest and Christmas services which we hold in the village hall. Many of the children go on to attend the local village school or schools in Cranleigh and continue to develop their positive relationships with the church which have begun at pre-school.”

Gill Neal. Deputy Manager, Forest School Lead



Duke of Kent School

The Duke of Kent School is also in our parish. It is a mixed Independent school on Pitch Hill to the North of the village, catering for 4 to 16-year old pupils. There are historic links with us but none currently.



Ewhurst Baptist Church

We enjoy several joint acts of worship with the Baptist church through the year.



"I have loved my four years here. A major highlight is the excellent relationship we share with the congregation of St Peter and St Paul. We find real joy in the times we serve together. We are excited by the prospect of building on our already strong foundation and sharing our vision of serving our local community and reaching out with God's story to those around us, in creative ways."

Ewhurst Baptist Pastor Ben.



Outreach Events

Each year **the Friends of Ewhurst Church** charity holds several events involving the village and the wider area to raise capital funds. These include the bi-annual Family Day Out event held in July at the local Sayers Croft Rural Centre. The Annual Easter Market is held at the Parrot Inn in Forest Green and a bi-annual fund-raising dinner with entertainment is held in the village hall.

- ▶ **Weekly coffee mornings** held in the nearby Glebe Community Centre, a very welcome morning of fellowship together
- ▶ **Winter warmer lunches** are held in the Wilson room, where we also hold our Harvest lunch and our Lent lunches
- ▶ **The Listening Lounge**, held on the first Saturday of each month in the Wilson room where a small group come together to listen to chosen tracks of music, and enjoy light refreshments.
- ▶ Our annual **Church Fete** is held in the churchyard on the Heritage weekend in September with a barbecue provided by the Village Club and refreshment stalls with the focus on fun.



Group Visits

We have regular visiting groups of children from the Sayers Croft Rural Centre who come on guided tours of the church and our bell tower.



What's on offer in Ewhurst



As a lively, active village there are many clubs and amenities. Below are a selection:

- ▶ Bulls Head,
- ▶ Hazelbank Country stores
- ▶ Hairdressers
- ▶ Ewhurst Village Club
- ▶ Ewhurst Players – Regular Productions are sold out!
- ▶ Ewhurst Cricket Club – just started a juniors section
- ▶ Sayers Croft Outdoor Learning Centre
- ▶ Ewhurst youth sports centre
- ▶ Bowls
- ▶ Ladies Stool Ball
- ▶ WI
- ▶ Football Club
- ▶ Hurtwood Polo Club



Parish Data and Finance

Number of Baptisms, Weddings and Funerals including Cremations:

Year	Baptisms	Weddings	Funerals
2025	4	1	6

Average Sunday attendance: Adults 25 - 30

Maintaining our church is challenging in the current climate. Planned giving meets all general expenditure. Our plan, when the new Priest-in-Charge arrives, is to attract more planned giving to further develop our mission and ministries.

Expenses are reimbursed in accordance with Guildford Diocese guidelines.

[Parish of Ewhurst 2024 Signed Accounts](#)

Local Trusts

We are blessed to have a 'Friends of St Peter and St Paul' charity, a capital fundraising group, of which the Priest-in-charge will be an ex-officio member. The PCC and the Friends seek to work closely together on ensuring our beautiful church building is fit for purpose for decades to come. Recently there have been differences of opinion on the immediate priority for the church building, and our next parish priest will need to be able to lead constructive conversations and facilitate agreements between the two charities.

In addition, the Ewhurst Charity and Ellen's Green Mission Hall Trust manage Trust Funds which donate annually to organizations in the parish, especially those with a social or educational focus. The Priest-in-charge has traditionally been an ex-officio trustee of these bodies.



Deanery Context

Cranleigh Deanery is the largest geographical deanery in the diocese and the most rural. The parishes all lie within the London commuter belt which shapes their character. There is a good deal of wealth within the area but in each village greater social diversity can be found than might initially seem apparent. There are thirteen parishes, fourteen churches and a population of about 30,000, which is served by a good number of clergy and lay people. Each parish operates well within its own community and there is general goodwill towards the church throughout the area. There are a number of church schools and parish involvement in them is good.

The Deanery Synod meets twice a year and looks at ways in which the Diocesan Vision, Transforming Church, Transforming Lives, can be developed at Deanery level. The Chapter meets regularly and is well attended with good working relationships amongst the clergy.



‘We are praying for the right person;
might this be you?’



Contact: Churchwardens Liz or Martin ewhurstchurchwardens@gmail.com
or Area Dean Sarah Hutton revsarah@parishofshere.com