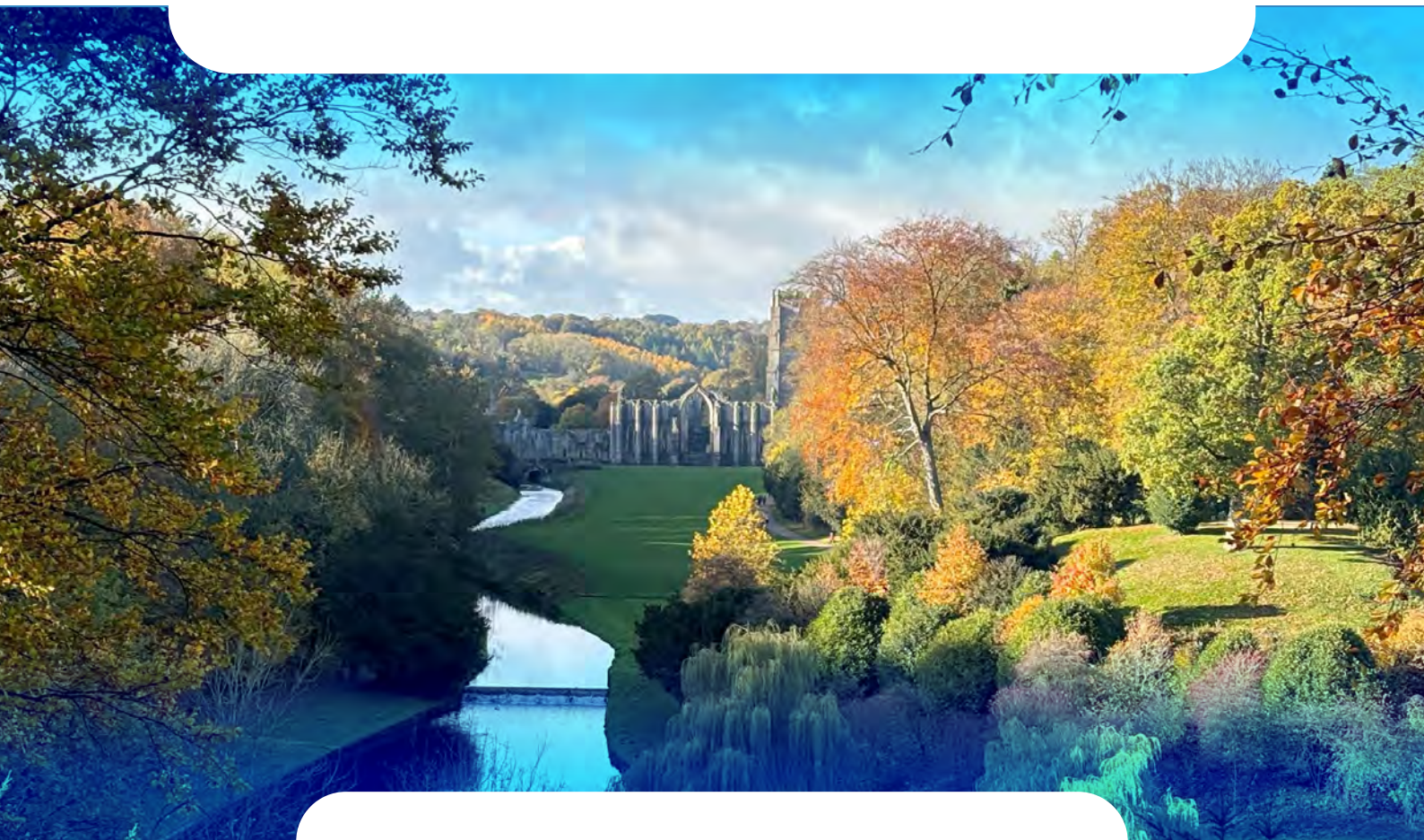




# *The Fountains Benefice*



THE CHURCH  
OF ENGLAND

Diocese of Leeds





*Mission, growth and  
the increased spirituality  
and discipleship of all.*



# Welcome

---

**W**elcome to the Fountains Benefice nestling at the foot of Wensleydale in the heart of North Yorkshire. Thank you for your interest in our vacancy. We hope you will be excited by the possibilities of serving as Rector here, of being part of our communities and of enjoying God's call to be here.

As our Benefice starts a new phase of its journey, we pray that someone will be called to lead us, providing vision, encouragement and teaching. The post will be rewarding but will require patience, persistence and a sense of humour. However in all this we offer our wholehearted commitment and support. Above all, we are seeking a priest with a heart for the whole community.

The Church is seen here as an important and relevant part of rural life, with many of this wider community feeling an attachment to their local churches. Although we have a long history of working as multiple parishes, we embrace the need for fresh vision and thinking. We are excited to explore new ways of working together in closer unity to support and assist the incumbent in the pastoral care and administration of the Benefice.

There is ample opportunity to engage in mission, encouraging growth, and nurturing both deeper spirituality and the discipleship of all. Our mission strongly echoes that of the diocese: to "enable confident Christians to live and tell the Good News of Jesus Christ".

## **Our priorities for the Benefice are:**

- ◆ Spiritual and church growth and mission
- ◆ Strengthening ways to work as a united Benefice
- ◆ Engaging with families, children and young people
- ◆ Spiritual development of the laity
- ◆ Development of the pastoral care teams

# What are we hoping for in our new Rector

---

**We believe that the person appointed will have been called to serve here as part of God's plans for the Benefice. Together, we have considered and identified the qualities required of a priest for this role, although we do recognise that it is not possible for one person to fulfil every expectation.**

- ◆ A spiritual and prayerful priest with a confident personal faith
- ◆ An ability to accommodate different churchmanship and styles of worship. Someone who will be committed to ecumenical partnership
- ◆ A visionary leader who will encourage spiritual growth, and lay discipleship
- ◆ A commitment to reaching out to children, young people, families and schools
- ◆ A visible presence across the benefice, with an interest and understanding of rural life and the needs of the community, who will lead us in developing our pastoral care
- ◆ An organised and self-motivated individual, able to create a healthy life/work balance

## **Additional responsibilities attached to the post:**

- ◆ Sustain a positive relationship with the NT at Fountains Abbey, including their Chaplaincy Team, and St Mary's Church, Studley
- ◆ Director/Trustee of Grewelthorpe Village Hall together with the Methodist Minister, as part of the legal agreement



# The Anglican Diocese of Leeds

The Diocese of Leeds comprises five Episcopal Areas, each coterminous with an Archdeaconry. This is now one of the largest dioceses in the country and its creation is unprecedented in the history of the Church of England. It covers an area of around 2,425 square miles, and a population of around 2,642,400 people.

The Diocese comprises major cities such as Bradford, Leeds, and Wakefield, the large industrial and post industrial towns of Halifax, Huddersfield and Dewsbury, the spa town of Harrogate, the market towns of Skipton, Ripon, Richmond and Wetherby and the deeply rural areas of the Dales. The whole of life is here, along with all the richness, diversity and complexities of a changing world.

The Interim Diocesan Bishop the Rt Revd Toby Howarth (taking over from The Rt Revd Nick Baines) is assisted by five area bishops (Bradford, Huddersfield, Kirkstall, Wakefield and Ripon) and five archdeacons (Bradford, Halifax, Leeds, Pontefract, Richmond and Craven).



**The Benefice of Fountains** lies in the Ripon Deanery of the Ripon Episcopal Area, in the Archdeaconry of Richmond and Craven led by the Venerable James Theodosius. The Bishop of Ripon is Rt Revd Anna Eltringham.



Our vision as the diocese is about confident Christians, growing churches and transforming lives and communities, to live and tell the good news of Jesus Christ. For all of our appointments, we are seeking clergy who have a joyful and confident faith that has inspired a track record of church growth, both numerically and spiritually.

## Our Benefice

The Benefice of Fountains comprises a group of four parishes in the Ripon Episcopal Area and forms part of the Ripon Deanery. It is made up of the parishes of:

- ♦ **Fountains**, comprising the three churches of Aldfield, Sawley, and Winksley
- ♦ **Grewelthorpe**, which is a Local Ecumenical Anglican Methodist Partnership
- ♦ **Mickley**, the smallest of the four parishes
- ♦ **Kirkby Malzeard**, which also has the Chapel of the Resurrection at Dallowgill

In the heart of North Yorkshire it lies to the west of the ancient cathedral city of Ripon. It is bounded on the south by the World Heritage Site of Fountains Abbey and Studley Royal Water Garden, near the villages of Aldfield, Sawley and Winksley, and on the north by the awe-inspiring Hackfall Woods, near the villages of Grewelthorpe and Mickley, on the banks of the River Ure. Near Grewelthorpe are also to be found the beautiful Himalayan Gardens and the Limetree Astronomical Observatory. The moors of Dallowgill and Kirkby Malzeard form the western border to the benefice.

The area is part of the Nidderdale National Landscape (formerly AONB), and contains a unique blend of moorland, pastures, wooded valleys and streams, which makes for great walking country. The tourist trade is flourishing, with a variety of holiday accommodation to be found. However all the villages have a good fixed residential population.



The farming is mainly pastoral, with many well-run farms specialising in cattle and sheep. Traditional practices still survive, with well-maintained hedging and dry-stone walls enclosing much of the pasture.



The working population is mixed, with a large number of people still involved in agriculture or small businesses, but with a proportion also commuting to local towns and cities. There are also a significant number of retired people in the area who take an active part in community life, including in the churches. There is some, largely hidden, rural deprivation and isolation.



In spite of its atmosphere of rural beauty and calm, the area is well-connected, not only to Ripon and Harrogate, but even further afield to York, Leeds and Teesside.

Ripon, and the ancient town of Masham to the north, are well-stocked with food shops (including supermarkets) and other services. However, the benefice also has a thriving village shop, a butcher, a fish and chip shop, a garage, several pubs and cafes, and also Grantley Hall, a world class hotel with five exceptional restaurants, and award-winning spa and wellness facilities.

There are many seasonal events in several of the villages in communal spaces and on playing fields (where a variety of sports can be found taking place), and across the Benefice there is a good sense of community.

Over the years the churches in the area have developed a strong sense of communal identity as a Benefice; yet each church and village retains its own character, which is highlighted in further detail elsewhere in this brochure.

Each parish has its own PCC (Church Council in the case of Grewelthorpe) with lay chairs and local churchwardens. The churchwardens meet quarterly as the Benefice Churchwardens' Group, with the aim of supporting the priest with strategy, governance, administration and financial aspects of the Benefice. The PCCs are exploring ways of making governance in the Benefice more efficient, so that a larger proportion of the Rector's time can be released into the work of ministry, rather than being taken up with more mundane matters, such as routine buildings maintenance and repairs. This will be an early topic of discussion with the new priest.

## The Ministry Team

Apart from the Rector, there is presently a team of three, one priest and two Readers/LLMs: All three take an active part in the life and worship of the Benefice.

♦ **The Revd Andrew Cromarty** (p/t House for Duty/ Associate Priest / Spiritual Director).



Revd Andrew recently retired from full time ministry, and joined the team in 2023, working 3 days per week. He led our 2024 Lent sessions on Pilgrimage, the Benefice Pilgrimage to Fountains Abbey, and leads the team planning '*Fountains Ways – Ancient Paths for Modern Pilgrims*', a series of three Pilgrim routes across the Benefice. Andrew's concern for outreach and spiritual nurture have resulted in extensive visiting, and leading small group courses such as the Bible Course and the 24/7 Prayer Course. In June 2025 he led a Quiet Day in the local Himalayan Garden and Sculpture Park for the diocesan Spiritual Directors, with plans for more. Andrew is keen to help the parishes experiment with more contemporary worship, and is currently leading a series of informal services, alongside his usual Sunday services and Occasional Offices.





♦ **Adrian Roberts** (Reader/LLM/Spiritual Director)



Adrian is a retired school chaplain and teacher of Religious Studies. His focus in parish work is on conducting funerals and preaching. He is also a registered spiritual director.

♦ **Liz Jarvis** (Reader/LLM with PTO).



Liz completed Reader training in 2010 and then studied Theology and Ministry at York, where she graduated in 2013. She has a broader interest in philosophy, particularly Eastern Philosophy and meditation, and spent many years tutoring at the Leeds School of Philosophy. Liz is a keen advocate of pastoral care, and works closely with the Ministry Team, in offering support throughout the benefice.

Liz and Adrian are available for services of Morning and Evening Prayer on Sundays and are licensed to conduct funerals. They are also involved in Collective Worship in two of the primary schools, along with the local Methodist Minister.

All members of the team take part in the monthly United Benefice Eucharist services, with preaching and other roles shared as appropriate. Although each member of the team represents an overlapping variety of church traditions, they always work well together in an atmosphere of friendly co-operation, both during previous periods of incumbency and at the present time. Pastoral care is a very important part of the team's ministry, with hospital and home visits to those suffering, or unwell, in the benefice. We have several local retired, and visiting, clergy willing to lead services, as well as our area Methodist minister Ian Pruden taking the Methodist services.

We have a part-time Benefice Administrator who works 6-8 hours/week from home at present, but we are exploring a permanent office space for the role.

Good internal communication across the Benefice is vitally important. This is largely done by e-mail and WhatsApp, but more public communication is effected via the weekly pew sheet (produced by the Benefice Administrator), the website ([www.fountainsofchurches.co.uk](http://www.fountainsofchurches.co.uk)), and the monthly Fountain magazine which is delivered to almost every house in the benefice.

# The Parish of Fountains

There are three churches in the Fountains Parish:

- ◆ St. Lawrence the Martyr, Aldfield, c. 1782
- ◆ St Michael and All Angels, Sawley, 1879
- ◆ St Cuthbert & St Oswald's, Winksley, 1917

The three churches work well together as a parish and have a joint PCC with a lay chair, and a fundraising and outreach team. All the churches and their congregations are different, but each is welcoming and friendly. We enjoy refreshments and fellowship after most morning services.



Services feature Eucharist, Evensong and Morning Worship, and occasional less formal services. We also have Plough and Harvest Services which are supported by our local farming community. There are close ecumenical links, and Sawley has been enjoying more frequent joint services with the Methodists. As more people hold their wedding receptions at Grantley Hall, an increasing number of couples are requesting to be married at St Cuthbert & St Oswalds' church in Winksley.

Church activities have, in recent times, included a house group, Lent lunches in support of Christian Aid, food bank collections, and benefice prayer and bible courses.

## Church Buildings

All the churches in the parish are well cared for, but there is always work to be done when funds become available.



*A recent pilgrimage from Winksley finished with a picnic lunch and a service at Fountains Abbey*



## Village Venues

Both Sawley and Grantley have excellent Village Halls. These are centres for the many activities that take place in the community, such as music, arts, fitness and Young Farmers' clubs. They are also used for parish fundraising events.

The Parish Room in Winksley hosts meetings and social events, including 'Kettles On' – a monthly pop-up café, and Domino Drives. It is also used for the very active 1st Fountains Guides, Brownies and Rainbows.



The primary school children from across this part of the Benefice attend Fountains School, in Grantley. The ministry team goes into the school regularly to lead collective worship, and there is an after school 'Seekers Club' once a month.

## Parish finances

The stewardship team launched a successful campaign in May 2018 to provide talent, time and money to further the work of the parish. Gift aid falls to this group and is effectively administered, with much of this now going through the Parish Giving Scheme. We also support local charities as part of our fundraising and outreach.



*Our Church Wardens:  
Christine, Angela and Bridget.*

## The Parish Of Grewelthorpe

St James and the Methodist Church has been a successful ecumenical partnership since 2006, when “two became one” to maintain a Christian presence in the village, and we are looking forward to celebrating the 20th Anniversary in July, 2026.

Worship takes place in the church, our congregation worshipping as one using both traditions of service. Our membership includes a range of churchmanship, from high church to nonconformist, so we are very adaptable. Each month, there are two Anglican Services, and one Methodist Service as well as the Benefice Service.



The Chapel became the Village Hall, with a volunteer-run café, and the church now benefits from generous free use, only having to contribute to utility costs.

### The Church Building

The church building requires urgent major repairs, as detailed in the parish profile, which may seem daunting; however, we view this as the chance to restore it for the foreseeable future. We have an exciting mission plan, and our experienced project and fundraising committees are working with Diocesan Officers and have reached the stage of applying for faculties and grants. We believe if it is God’s intention we will succeed.





## Church Activities

Our faithful regular congregation is welcoming, and the church is central to the community, as demonstrated by the attendance at the Lent and Autumn Lunches, Harvest, other festivals, the annual Epiphany Party and the support of our regular fundraising events. We have a ministry of cards, where Christian cards are sent out from the church, reaching out to the local community as they encounter significant events in their lives. We hope to start another Emmaus Course and encourage our members to attend Benefice Bible Study and prayer groups, when available.



Two experienced leaders run a very successful monthly 'G Club' in church for around 20 primary school aged children. Grewelthorpe C/E school is part of the Leeds Diocesan Learning Trust and has 62 pupils, and we see the proposal involving the school in the inner-city partnership part of our future mission plan as very exciting.

As a church we are very committed to both the Benefice and the Methodist Mission Area. We wish to play our full and active part in worship, support, governance, pastoral care, mission and in support for the Clergy and Ministry Team, together with encouraging the development of Lay Leadership and the discipleship of all.

We look forward to welcoming and supporting a new Rector to lead our Benefice into the future.



*Our church wardens  
Ann and Lynette*

## The Parish of Mickley

Mickley is a small but lively village and the weathervane of a fish on the church spire reflects both the association the village has with the River Ure as well as its Christian symbolism. It has a population of just over 100 with a small but committed congregation from a variety of church backgrounds.



The village has a thriving village hall community holding many events both charitable and social throughout the year. There is a broad spread of ages and occupations connected to the surrounding land and local towns. Village children tend to go to school in Grewelthorpe or Ripon.

Although there are no shops, pubs or other facilities in the village this is made up for by a strong sense of community with everyone seeming to keep an eye out for those in need.



*Tom, our  
Church Warden*

# The Parish of Kirkby Malzeard

The original church of St Andrew's dates to c1050, but a devastating fire resulted in it being rebuilt in 1908. It serves Kirkby Malzeard, the largest village in the Benefice, with a current population of around 750, as well as the neighbouring communities of Laverton, Dallowgill and Galphay. Kirkby Malzeard PCC has a solid base with Dallowgill represented.



The style of worship at St Andrew's is traditional, but more modern services based on the 'Service of the Word' are being introduced. Special services at St Andrew's are extremely well attended. They include the Crib Service and the annual Plough Service, when the Kirkby Long Sword Dancers perform their age-old routine.

The Parish Church of Dallowgill was closed in 2011, but the Chapel of the Resurrection remains in Dallowgill and holds monthly services during the summer months, and occasional services throughout the year, including our Lambing Service and the Dawn Service on Easter Day.



## Church Buildings

The church buildings are in good repair with redecoration being organized at St Andrew's. The churchyard is closed and maintained by North Yorkshire Council. There is a local cemetery, and an open church yard at Dallowgill which is managed locally.

We are encouraging the use of the church building as a venue for various activities. A number of concerts have been held in St Andrew's, as well as the 2025 premiere of "Becket - A Medieval Murder Mystery", a locally-written play, involving both professional and local amateur actors, which proved a major success and significant fundraiser. Our aim is to bring the church back into being an important focus for the village.



*Billie, our  
Church Warden*



# The Rectory, Kirkby Malzeard

## Your new home

The Rectory provides a fantastic living space. It is a modern, ecologically designed, four-bedroomed house with two large reception rooms, a well-equipped kitchen and utility room, and a separate office space. There is a large double garage, giving ample storage, and plenty of parking at the front of the house.



The house is situated on the outskirts of Kirkby Malzeard, the largest village in the Benefice, and it has far-reaching views over the adjacent countryside. The sunny, south facing garden ensures a light and airy feel to the house.

Kirkby Malzeard has a mixed community of young and old, from many different backgrounds. The village has a vibrant community spirit, and many activities are on offer for a wide variety of interests, with the Mechanics Institute providing a well-maintained space for these.



The village also boasts a GP surgery, high quality butchers and a village store, as well as a pub and sports/playing fields, all within walking distance. The local primary school is well attended and rated Good by Ofsted.

The Rectory provides a lovely home for the incumbent, embedded in local village life.

## Additional Information

### Schools

There are three Church of England voluntary controlled primary schools:

- ◆ Fountains, in Grantley
- ◆ Grewelthorpe
- ◆ Kirkby Malzeard

All are rated good by Ofsted and SIAMS.



Fountains and Grewelthorpe Schools form the Ripon Rural Partnership (along with North Stainley - which is outside the Benefice). They are part of the Leeds Diocesan Learning Trust and share a joint head teacher and Local Academy Council. Both schools have collective worship once a week, led by the benefice collective worship team. There are four members of the team including the Rector. The incumbent has a place on the LAC.

Kirkby Malzeard School is in federation with St Nicholas' School, West Tanfield (outside the Benefice) and they too share a Head Teacher and Board of Governors.

Local secondary schools include Ripon Grammar School (selective), Outwood Academy, Ripon, Nidderdale High School, Pateley Bridge and St Aidan's C of E High School, Harrogate. There are also several private schools in the area.

### Health Care

There is an efficiently run and highly regarded GPs' surgery with branches in Kirkby Malzeard and Masham. Dentists and alternative GP's surgeries can be found in Ripon.

Ripon Community Hospital is a wonderful amenity, offering a Minor Injuries Unit, various outpatients and diagnostic clinics. There are also good connections to Harrogate, Northallerton, Leeds and York hospitals.

## Transport Links

The villages across the benefice have infrequent bus services, mainly linked to Ripon or Masham. However, we are close to the A1 and there are good railway links, both north and south, from Harrogate, Thirsk and Northallerton, (even London is only 2 hours away by direct train from Thirsk). The nearest international airport is Leeds Bradford Airport, which can be reached within an hour.

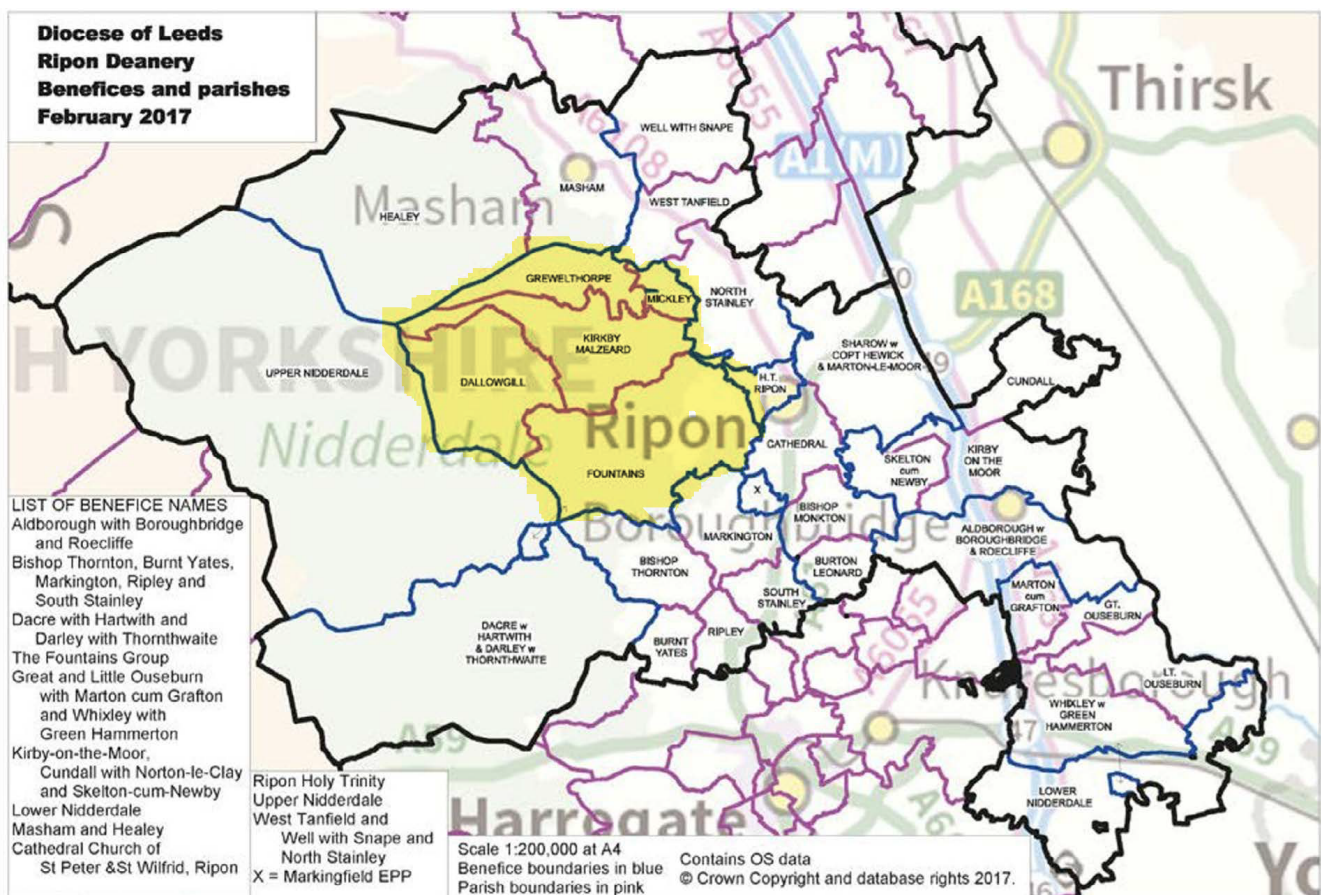
## Recreation

- ◆ **Walking** – The Benefice Fountains Ways group are preparing to launch three pilgrimage routes across the Benefice. ‘*Fountains Ways – Ancient Paths for Modern Pilgrims*’ will comprise the ‘*Abbots’ Way*’, the ‘*Curlew Way*’ and the ‘*Fishers’ Way*’, and take in both the beautifully varied countryside around us and various heritage sites locally, as well as including welcome boards and family activities in each of our churches
- ◆ **Cycling** – there is a great network of quiet country roads as well as good local cycling clubs for the more ambitious
- ◆ **Fishing** – there are three rivers running through the benefice including salmon fishing on the Ure
- ◆ **Art courses** run from Old Sleningford and Tower Hill near Grewelthorpe
- ◆ **Food and drink** – there are a host of good pubs in the area, one top class hotel and nearby restaurants in Masham, Ripon and Bedale
- ◆ **Horse riding** – there are livery stables and good horse riding on bridleways
- ◆ There is a large range of **sports and fitness clubs**, both in the benefice and in the nearby towns



## Diocese of Leeds

### Ripon Deanery from February 2017





God is here! As we your people  
Meet to offer praise and prayer,  
May we find in fuller measure  
What it is in Christ we share.  
Here, as in the world around us,  
All our varied skills and arts  
Wait the coming of the Spirit  
Into open minds and hearts.

Here are symbols to remind us  
Of our lifelong need of grace;  
Here are table, font and pulpit;  
Here the cross has central place.  
Here in honesty of preaching,  
Here in silence, as in speech,  
here, in newness and renewal,  
God the Spirit comes to each.

Here our children find a welcome  
In the Shepherd's flock and fold;  
Here as bread and wine are taken,  
Christ sustains us as of old.

Here the servants of the Servant  
Seek in worship to explore  
What it means in daily living  
To believe and to adore.

Lord of all, of church and kingdom,  
In an age of change and doubt,  
Keep us faithful to the Gospel;  
help us work your purpose out.  
Here, in this day's dedication,  
All we have to give, receive;  
We, who cannot live without you,  
We adore you! We believe!

Words © 1979 Hope Publishing Company





*“We hope you have enjoyed reading this and will find an application for the post of Rector of this beautiful Benefice completely irresistible. We love living and working here and we’re sure you will too.”*

The Churchwardens





Revelation 22:1

*“Then the Angel showed me the river of  
the water of life, bright as crystal, flowing  
from the throne of God and of the Lamb.”*

