



# TEAM VICAR

based in the Parish of Wigan East  
(Chapelfields)

## Is God calling you to a family of faith, love and community in Wigan?

The Parish of Wigan East, part of Church Wigan and known as Chapelfields Hub, serves the communities of Hindley, Hindley Green, Platt Bridge, Bickershaw, Abram and Bamfurlong. God has been answering our prayers in many ways, and we now seek a new Team Vicar to work with the Hub Leader and excellent local team to take the work forward.

We are praying for a priest to join the hub leader, two active retired priests, readers, hub leadership team and many hard-working lay volunteers to help move us on in the next stage of the parish working better together to grow the mission.

We seek someone who, above all, loves to help others grow as disciples of Jesus, knowing him more and becoming more like him in character and deed. The priest we look for will be relational, pastoral and able to empower people of different ages and stages of faith to go deeper in their walk with Jesus through your teaching and preaching.

If this is you, you'll naturally enjoy supporting and encouraging people, including those who are vulnerable, and be humble and loving to those you meet. You will have a sense of fun whilst being respectful, not patronising but valuing and recognising the faith and gifts in all manner of people.

We in turn will be welcoming and supportive, praying for you, walking alongside you as you move here and helping you as you get to know the people and begin to love them as Jesus tells us to love. You will be a cherished member of an authentic team and a loving family.

## Do you love to...?

support and encourage people of different ages, life experience and tradition

help people grow in the likeness of Christ

Have fun

recognise and develop the gifts in others

Be part of a real team and church family

Church   
**WIGAN**



Being part of Chapelfields Hub means more than just belonging to a parish, it's sharing in a family of faith, love and community where multiple churches come together to grow, serve and shine God's light.

*Louise*



## THE ROLE

You will be a member of the Church Wigan clergy team which together leads the mission across the deanery. Your area of primary responsibility will be the Parish of Chapelfields, working with the hub leader, ministry team (including two active retired priests, lay readers and mission leaders) and hub leadership team, which prayerfully sets the priorities for the coming year. The team have been on an exciting journey over the past couple of years, growing deeper in their faith but also in working together from across the hub and we look forward to working with you. The role offers a positive mix of working as part of a team while also providing opportunities for you to exercise leadership.

We currently have six church buildings and seven worshipping communities which offer both traditional and contemporary styles of worship across. However, this does not mean you will be stretched beyond capacity. Our ministry team of retired clergy, lay readers and missional leaders ensure that worship, pastoral care and occasional offices are shared. You will focus on two churches which will be matched to the gifts and skills you bring, guiding and encouraging their local lay leadership teams in implementing agreed mission priorities, mentoring key members, being present at community activities and being first point of call for pastoral issues.

Pioneering is at the heart of the growth in Church Wigan, and, with the support of the hub leadership team, you will have opportunity to develop new missional communities.

Four churches have the equivalent of Sunday school either every week or monthly, and three have parade services monthly during term time. 'Come and See' is our youth provision and is led by the Church Wigan Next Generation team. In addition, we have seven church primary schools and four community primary schools, all of whom we have regular contact with thanks mainly to our Children, Schools and Families team.

## TEAM

## WORK



**As one of seven churches in Chapelfields We have found it beneficial to be part of a team - all working together as a family.**  
This has enabled us to grow in faith and through joint events our mission has reached a much wider audience.





## GROWING MINISTRY

We have experienced the blessing of unity in Chapelfields even as we have intentionally committed to fellowship and working together across the parish. 'Hub' for us isn't a fancy new name for parish; rather it describes the way we bring people from different congregations and viewpoints to pray, dream and plan together for the glory of God.

There are signs of new spiritual growth, from a rising desire for people to engage in 121 and 321 personal discipleship pathways to offering Alpha as a way of introducing new people to Jesus. From refugee families to younger men, people are starting to find a spiritual home with us.

The mission priorities discerned by the hub leadership team and agreed by PCC include:

- **Children, Schools & Families** – deepening our relationship and cooperation with schools and creating opportunities for families to come together in worship.
- **Food pantry** – helping the many people accessing food security with us to be fed spiritually as well as physically.
- **Baptism** – using our large baptism ministry to introduce people to Jesus in ever more effective and meaningful ways.
- **Estate outreach** – creating a worshipping community for men based at The Banner pub in the middle of the Hindley estate.
- **Youth** – develop outreach and discipleship of young people on the Woodcock estate in Platt Bridge.

**How good and pleasant it is when brothers and sisters live together in unity [...]  
For there God bestows his blessing.**

**Psalm 133**



**We are a growing hub both spiritually and in number.**

**In learning to work together we have drawn from each others talents, strengths and enthusiasm to create new opportunities to share God's love with our communities.**

**We also know how to have fun and laugh. Being part of all of this is a great joy.**

*Sue*



# WORK ACROSS THE HUB

**Hub Service** is held when there is a 5<sup>th</sup> Service in the month and we are beginning to see people from most of the churches now attending this and enjoying good fellowship with each other.

**Baptism Prep** Is held monthly and led in the main by Hub Leader Dot, with helpers from each of the churches coming to meet and talk with the baptism families. We are finding they engage with the conversation and writing a prayer of thanksgiving for their child/children, which we then read out at the baptism service. There seems to be no slowing down of baptisms.

**Children, Schools and Families** work is led by a group of experienced volunteers and very supported by our hub leader. They work with the schools and churches to develop both local relationships and hub wide. These include Experience Easter and Advent/ Christmas, termly school RE lead meetings, collective worship and some sessions supporting the RE curriculum. They have developed prayer spaces and designed opportunities for children and their families to explore their spirituality. The team put on a Christmas Nativity (with a difference) this year and it was well attended by families from the local schools. The team has a new partnership with national charity Transforming Lives for Good (TLG) which provides mentors for children at risk of permanent exclusion from education. This has started in one school, however this initiative is about to be expanded into other schools. The team is constantly thinking of ways we can engage our families with the good news of Jesus.

**Come & See** is the next generation work held in St Nathaniel's, Platt Bridge. They do games and community nights on Wednesdays and an alternative worship/teaching night on Sundays. This is led by the next generation team leader as well as others from the church.

I pray also for  
those who will  
believe in me  
through their  
message, that all  
of them may be  
one, Father, just  
as you are in me  
and I am in you.

John 17.20-21



Being part of Come & See has helped me **explore faith in a safe and non-judgemental space. Everyone is welcome to come along with opportunities to play games, get involved in community activities or dig deeper into their own faith journey through creative alternative worship.**

Lisa



# WORK ACROSS THE HUB



**Food Pantry** Is led by an amazing team and is a much-needed resource for Platt Bridge and indeed across the Hub, opening once a week. Its 500 members benefit from the pantry's money-saving social shopping model and enjoy new friendships made at the associated warm space. It offers a useful centre for partners such as local councillors and service providers to connect with residents to discuss needs and resources, and gives schools and churches in the parish a good cause to which they can actively contribute with food and voluntary service. As such, the Pantry is a major missional opportunity

**Pause to Pray** Is led by our hub leader mainly, but a couple of lay leaders also lead on occasions. This group prays, and studies and in the past have done Be Still, the Prayer Course and the Prayer course (Unanswered prayer) and the Difference Course after quite a long time doing Dwelling in the Word.

Now you are  
the body of  
Christ, and  
each of you is  
a member of it.

1 Cor 12.27

## A note about where you'll live



A house is of course provided for the postholder.

As there are a couple of options we will have a conversation with you regarding your needs and preferences to determine which parsonage would be better suited to you.



It's been nice to meet volunteers from other churches, something that probably wouldn't have happened if we hadn't become a large single parish.

Ruth

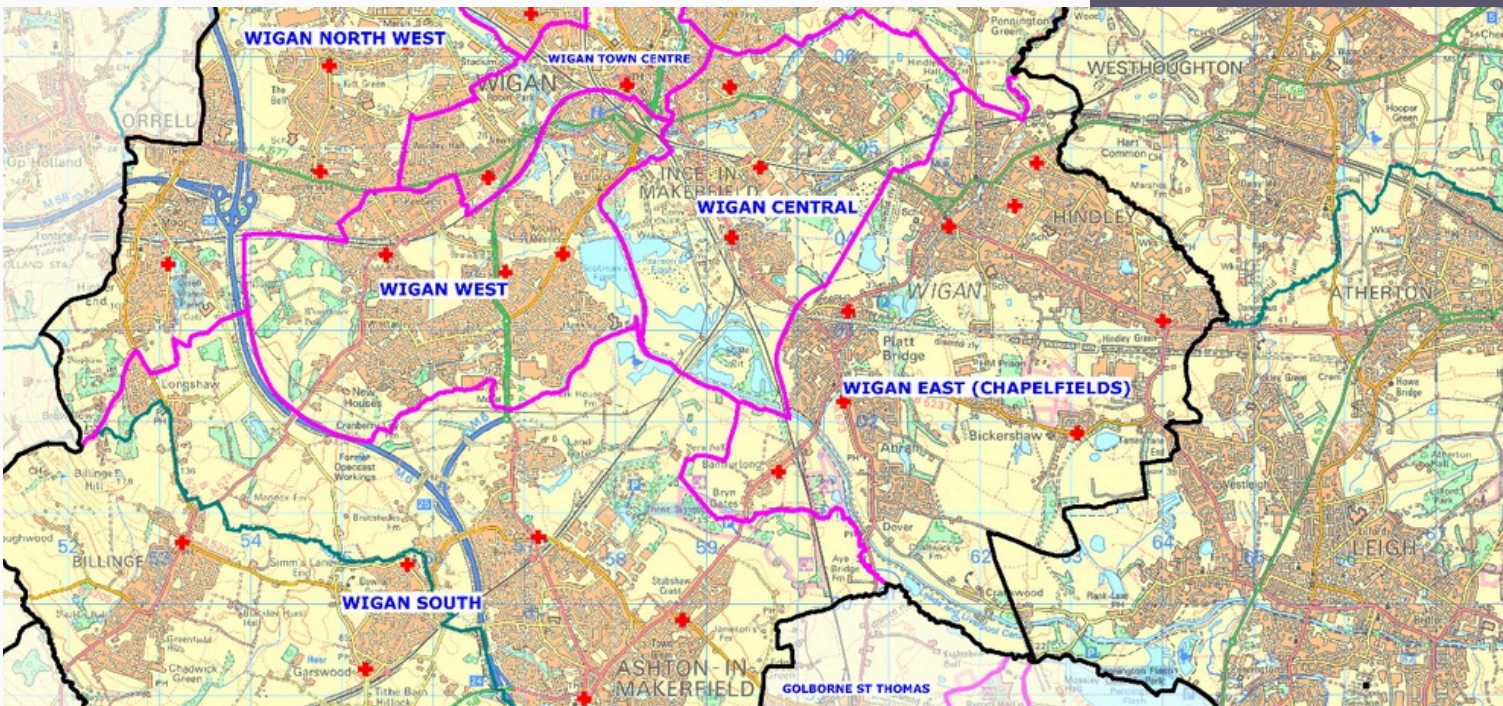


# ABOUT THE PARISH

Chapelfields covers the areas of Hindley, Hindley Green, Bickershaw, Abram, Bamfurlong and Platt Bridge. It is the largest of the parish hubs making up Church Wigan, with a population of 38,000. It is growing, with the most sustained housing growth in the Borough of Wigan. Platt Bridge and Hindley are the two focal town centres, but there are seven distinct communities – estates, towns and villages – each with a local sense of identity, and some lying at the very edge of the borough and diocese.

There are some areas of very low income and some of relatively wealthier means. We have an increasing settled refugee population, and some are regular attendees of our churches. A lot of terraced housing as you would expect from former mining towns and villages. The Liverpool to Leeds canal runs alongside the villages of Bamfurlong and Abram. There are good transport links with trains and buses to Liverpool, Manchester and further afield. We are only just over an hour from the Lake District, North Wales, Chester, the Peak district and the M6, M61, M62 are very close by giving easy access to much of the country.

**Wigan East,  
commonly  
known as  
Chapelfields,  
is the largest  
of the parish  
hubs in  
Church Wigan**



**Being part of Chapelfields has widened my church family, learning from and loving one another.**

*Susan*



# OUR PARISH CHURCHES

## ALL SAINTS HINDLEY

is the historic mother church in the Hindley area dating back to 1641. It is traditional in its churchmanship, offering a warm welcome to everyone, and has both an open and closed graveyard. The church is situated in the middle of a deprived housing estate and across from The Banner pub with whom we have started working with as part of our outreach programme. All Saints has great links with the schools in our area and with two Brownie and one Beaver/Scout group. There is a small meeting room attached to the church with a fully functioning kitchen.

## ST PETER HINDLEY

is situated at the cross roads on the edge of the busy town centre of Hindley. Its style is traditional with a growing congregation and children's ministry. It has links with school and youth organisations, and the spiritual and prayer life of the church is being re-energised. A team monitors the day-to-day running of church services and activities. Mission plays a role in church life and new ideas are embraced. Given its prominent situation, it is a popular venue for baptisms and weddings. There's a meeting room with toilets and Garden of Remembrance. There are links to the nearby St Peter's Pavilion.

## ST JOHN HINDLEY GREEN

is an active worshipping community right on the edge of the deanery and diocese. As well as seven youth organisations there are adult fellowship groups endeavouring to bring a larger number of people to know Jesus. There are close links with the local primary schools and the children are welcomed into church several times a term. There is a willingness to forge ever-greater unity with all the worshipping communities within Chapelfields and across Church Wigan.

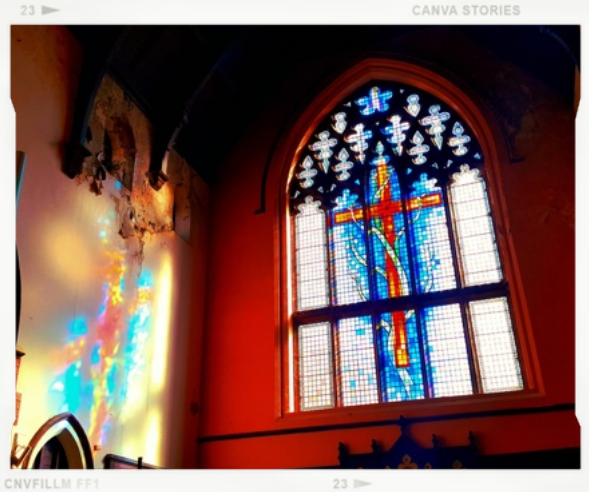




# OUR PARISH CHURCHES

## ST NATHANIEL PLATT BRIDGE

is the parish church of Platt Bridge, one of Wigan's town centres. Its heart for mission to its community is centred on its Food Pantry held weekly in the hall at the back of church. It enjoys good links with the local church primary school, whose parents connect with the pantry, and the relationship with the local community school is growing. It also hosts the Next Gen Games & Community Night gathering young people and an associated small worshipping community. A warm and friendly welcome will always be given here.



## ST JOHN ABRAM

is a traditional church in a former mining village close to Platt Bridge. It has an excellent relationship with St Johns CE primary school, hosting services throughout the year, and has an openness to new ideas and a strong desire to reach young families. They are served faithfully by a retired SSM and a Lay Reader. There is a growing work happening among families with the provision of children's actives during the Sunday service, and a bustling community breakfast takes place every Wednesday.



## THE GOOD SHEPHERD BAMFURLONG and ST JAMES & ST ELIZABETH BICKERSHAW

are two smaller churches serving villages near to Platt Bridge which are currently in the process of being closed for Anglican worship. The PCC is partnering with an independent church to use one of the buildings, bringing renewed spiritual energy to the local community. It is hopeful that a similarly useful 'resurrection life' can be found for the other building as well. In the meantime, we are working with the congregations to end well and work out what follows for them.





# THE WIDER CONTEXT

Church Wigan, with 2,600 members and 50+ buildings, is a single team ministry serving seven parishes in a ground-breaking new 'hub' structure that establishes unity in relations and purpose and enables effective sharing of resources and cooperation. However, more significant than the structural shift is the emerging culture of discipleship, mission and pioneering new worshipping communities.

We 'do team' at every level. Locally, we have local leadership teams at congregational level, which are linked into a 'hub' (that is, the relationally and legally connected churches and mission initiatives within a parish). You'll serve local teams as well as being a crucial part of the hub leadership team.

Centrally, you will take your place in the Church Wigan clergy and ministry team (which includes the Wigan Next Gen team), meeting every other Monday morning, to worship, fellowship and discern together how God is leading us in mission. You will need to be a real team player to truly enjoy all the benefits of ministry in Wigan, but you don't have to fit a mould: introvert, extrovert, or ambivert, catholic or evangelical, we love diversity in our team, and we genuinely get on with each other.

In our diversity we hold to one shared vision and mission:

## VISION

Through Jesus  
transformed people, transformed places

## MISSION

We join in with what God is doing  
to grow disciples of Jesus  
among all the people of Wigan Deanery

Church   
**WIGAN**



**Being part of a hub is challenging but gives us a sense of belonging. Since being part of Chapelfields, I have met people I would never have known because I didn't go to those churches. Through hard work we are pulling and working together and we have a bigger pool of people with different strengths and skills and as a hub we can work bigger and better.**

*Annette*

# THE WIDER CONTEXT



Our shared vision is more than restoring the church; it is about seeing the people and places of Wigan rejoice and blossom in the grace of God (Isaiah 35 is a foundational inspiration for us). This can be seen in our 'Lifted' network of social justice ministries, such as our nine pantries (food clubs), warm spaces and CAP debt centre, as well as our chaplaincies and partnerships with many schools. There is a fringe of 2,500 people open to prayer and hearing the gospel.

Church Wigan is served by our wonderful Support Services Team who help us run our buildings and operations more safely and efficiently. The funeral coordinator has taken much pressure off the clergy in terms of liaising with the funeral directors, organists and vergers, the property officer helps us care for and repair our buildings, and others provide safeguarding, admin, policies, comms and HR/payroll support. This is yet another example of how Church Wigan is pioneering new ways of working together.

Church  
**WIGAN**



There has been some misleading criticism from sources with no experience of what is happening in Church Wigan, and we're certainly not perfect: we've had to do a lot of learning on our journey together.

Yet, as the Church Times reported in April 2025, we are seeing signs of real growth in Wigan. National church statistics for mission reveal that Liverpool is one of only three dioceses to return to pre-pandemic levels of attendance and engagement, and that the greatest growth has been in Wigan. We rejoice that God's kingdom is being unveiled in greater measure among us!



**It's really good to have that extra support across the Hub and also to share good practice and ideas between churches.**

*Janice*





# ROLE OUTLINE

The role is a team vicar post in the Church Wigan team ministry with a primary focus on ministry in Chapelfields Hub. There are several distinct aspects of the role:

## **Priestly**

You will offer teaching, sacrament and pastoral care across Chapelfields, focusing primarily on two church congregations. You will also contribute to the busy schedule of occasional offices of baptisms, funerals and weddings.

## **Enabling mission**

In this key role you will support two local leadership teams to build capacity for, and engage in, mission. This will include growing disciples of Jesus and identifying, empowering and mentoring leaders. You will ensure agreed priorities are implemented, and lead by example in outreach. Helping local teams engage in programmes such as Greenhouse (for pioneering new mission) and Alpha will be important.

## **Ministry to young people**

You will play an active part in the opportunity-rich Children's, Schools & Families ministry of the parish, working with schools and developing loving mission among the communities connected to them.

## **Hub leadership**

You will be a close colleague and support for the hub leader and, with her, encouraging the hub leadership team, PCC and parish ministers.

## **Church Wigan**

You will be a valued and important member of the Church Wigan clergy/ministry team, helping shape the common mission and sharing in fellowship and peer support. This includes regular chapter sessions in which the team engages in formational activities to keep us fresh and spiritually healthy.

**Set an example  
for the believers  
in speech,  
in conduct,  
in love,  
in faith  
and in purity.**

**1 Timothy 4.12**



**It's such a joy to to share God's love with our local community through games, litter picks and fun events, building relationships and trust with folks who might not feel comfortable at traditional church services, with the hope others might come to know and love God and explore their faith too.**

# PERSONAL QUALITIES

## ESSENTIAL

## DESIRABLE

### Theological

'Seeks first the kingdom and its righteousness' with a commitment to see the people and places of Wigan transformed.

Broad-based theological understanding, willing to release the whole people of God in a mixed ecology of church.

Experience of serving church communities with a variety of ecclesial traditions.

### Spiritual & Personal Qualities

An enabler that helps others grow as disciples of Jesus in knowledge, attitude and action.

A humble and caring pastor who loves to encourage and support people

Positive team player who works with others to find wisdom, resilience and ways to overcome challenges.

Good sense of humour

A person of deep prayer

Calm, reassuring presence in the midst of change with experience of handling disputes and conflict with grace, sensitivity and firmness.

### Vision & Leadership

A relational leader who can connect with people of different ages, backgrounds and stages of faith and builds trust with clear communication.

Has worked in a team context.

### Knowledge & Skills

Prioritises the important in a tempest of urgent demands, including wise self-care and life-giving activities.

Devolves responsibility & delegates tasks yet maintains accountability.

Has profound grasp of safeguarding.

Has experience of leading teams.