



ST JAMES THE GREAT  
HAYDOCK

Registered Charity 1153937



# Parish Profile

*September 2017*

## **Executive Summary:**

We seek a priest who can bring new ideas for outreach and evangelism in context of Anglo-Catholic spirituality. To that end, we hope he will develop and sustain lay leadership and discipleship, by good teaching and example.

Our church school is an important aspect of our church life, so we look for someone able to relate to children and communicate with them.

Experience of the healing ministry of the church (or willingness to learn) would be desirable to support this prayerful aspect of our church life. Pastoral care is also seen as important.

Haydock is situated at the junction between major east-west and north-south routes, and is well served by road, rail and accessible airports. The cultural life of Liverpool and Manchester is within easy reach.

Employment opportunities within the St Helens area are limited, obliging workers to commute. The parish shows a mixture of areas across the spectrum of Social Deprivation index.

The church itself has maintained a consistent Anglo-Catholic spirituality for 150 years, and the present congregation wishes this tradition to be supported and developed.

The church building is Victorian, the Lady Chapel dating from 1866 and the adjacent main Nave from 1892. The fabric is in good order overall and is proactively maintained.

Financially the church is in a good position and is able to meet its costs and obligations.

It has a large and enthusiastic PCC and the life of the church during the interregnum is being supported by the ministry team and much volunteer activity.

St James the Great, Haydock, has passed a Resolution under the provisions of the House of Bishops' Declaration and is under the episcopal care of the Bishop of Beverley.

The regular and frequent celebration of the Eucharist is seen as the mainstay of our church life, and this is reflected in the current pattern of worship. We stand firmly within the Anglican tradition, so we use Common Worship and BCP liturgies.

Currently there are 235 people on the Electoral Roll, and that number has not declined in over a decade. Age distribution is heavily weighted to the senior end of the spectrum: we need to embrace digital technology more creatively to reach the "missing" 20 to 40 demographic.

St James' has good ecumenical friendship with the local Roman Catholic church, Blessed English Martyrs; we'd like to find ways to develop this collaboration.

Charitable giving and fund-raising for missionary societies and other charities is a feature of our church life.

We hope that our new Priest will rapidly settle in and bring his own brand of creative spirituality to bear on our on-going church life. We pray that God will direct all concerned, so that the appointment may be one of His making.

\*\*\*\*\*

## The kind of Vicar we'd like to have:

St James the Great, Haydock, has passed a Resolution under the provisions of the House of Bishops' Declaration and is under the episcopal care of the Bishop of Beverley. For theological reasons therefore and in the interests of preserving the unity of the congregation, the PCC seeks the ministry of a male priest of Anglo-Catholic spirituality. We are looking for someone willing to support and develop our liturgical worship, our service routine, tradition and ethos; someone who also has sensitivity to the spread of opinion within the congregation. We are firmly placed within the Anglican tradition, and use Common Worship and the Book of Common Prayer as the basis for our worship.



We seek a priest who can bring new ideas for outreach and evangelism in context of Anglo-Catholic spirituality. To that end, we would ask him to work with the existing ministry team, the PCC and other lay leaders and volunteers in the church. We hope he will develop lay involvement and discipleship, supporting the various groups which already exist within the church to help our church grow and develop. We look for a team leader. The church serves an area with an estimated population of around 16,000 people (this estimate from [https://en.wikipedia.org/wiki/Civil\\_parishes\\_in\\_Merseyside](https://en.wikipedia.org/wiki/Civil_parishes_in_Merseyside)), so there is much opportunity for outreach.



Our church school is an important aspect of our church life, so we look for someone able to relate to children, and desirably has experience with a church primary school (or is willing to learn) and be hands-on. The school website is at <http://stjamesceprimary.co.uk/>

Experience of the healing ministry of the church (or willingness to learn) would be desirable - we feel it is important to develop and sustain this prayerful aspect of our church's ministry. Pastoral care for the sick and those who are struggling is seen as important.



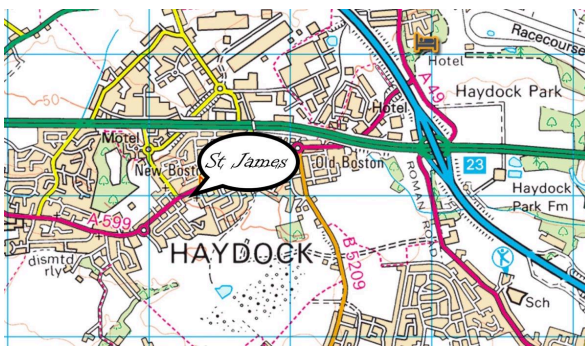
Overall, we feel that someone who is sociable and has a sense of humour - a "people person" - would fit in well and would feel at home here.



## About the Parish:

The village of Haydock took shape during the Industrial Revolution as a ribbon development, principally of housing for miners working in local pits. It was once the longest village in England. Some details of the historical background may be found in the articles on the history of the church, which is available on the church website at <http://www.stjamesthegreat.org.uk/>. Now the local pits are all closed down and what was once a village is now part of the conurbation of St Helens.

St Helens is famous for its glass industry, once the major employer in the region but now the fragments which remain employ far smaller numbers of workers. Currently the Local Authority and the College are significant employers, and a comparatively few jobs are available in supermarkets and in the local industrial estates. Haydock Race Course does employ a few people but does not add to local economy.



Geographically, Haydock is situated at the crossing of two major road routes - the M6 motorway running north and south crosses the A580, a major dual carriageway route running east and west. Trans-Pennine links are readily accessible via the M62 motorway. Railway stations at Earlestown and Newton-le-Willows (both near by) provide rail links to both Liverpool and Manchester, with their important

architectural and cultural resources. Also it is convenient to get to London or Scotland by rail via links to Wigan and Warrington main line stations. By both road and rail, Haydock has easy access to the scenic and recreational venues in North Wales and the Lake District. Two international airports are also within easy reach - John Lennon airport at Liverpool, and Ringway airport at Manchester.

Currently this strategic location has attracted the attention of large development consortia, resulting in proposals to build a major mechanised warehouse and transport nexus in adjacent greenbelt land. These proposals will bring some new jobs but also additional heavy traffic, which is a cause for concern.

Haydock is served by several primary schools and one secondary school. St James' CE Primary School is very close by and has good links with the community. Ofsted categorises the school as "Good", and in the recent SIAMS inspection it was rated "Outstanding" for its Christian ethos and strong links with the life of the church. Our school is a feeder Primary to Haydock High School, which is less than a mile away.

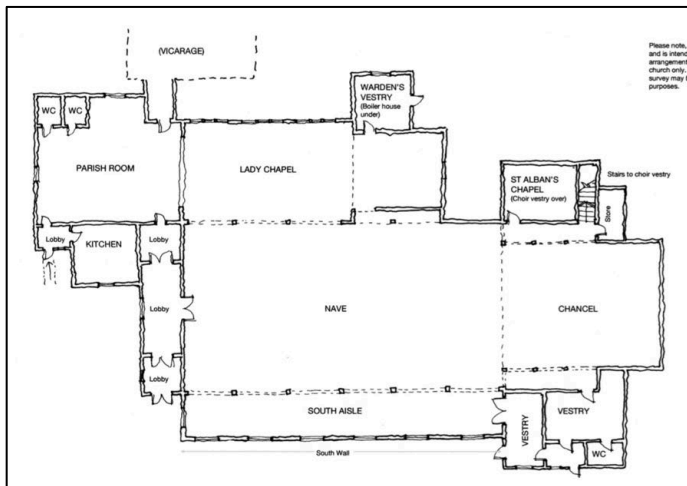


The web page at <http://dclgapps.communities.gov.uk/imd/idmap.html>, accessed on 8th August 2017 gives a map of indices of social deprivation. According to this source, Haydock shows a complex mix of areas across the spectrum of the deprivation distribution; it cannot be described as "well to do" part of the country but there are some higher-income areas within the parish. More details may be found in Appendix 8. Ethnic diversity is limited - the majority of residents are white and culturally British.



## About the Church:

St James the Great has an established congregation, drawing in people from the parish and surrounding area. It has consistently preserved its Anglo-Catholic tradition for 150 years, in spite of much opposition (see the Parish History). It continues to value the tradition of catholic worship and spirituality within the fellowship of a friendly congregation. The church is financially sound, and has never failed to pay its Diocesan Share. Each year it makes significant contributions to missions and charities world-wide, including support for the Anglican Diocese of Wiawso in Ghana.



### Church buildings:

The church building itself is Victorian - the main Nave unusually is timber-framed, dating from 1892, and seats about 300. Our Lady Chapel, which seats about 60, is the original Neo-Gothic brick structure of 1866 and it lies alongside the Nave, an arrangement which gives great flexibility of use.

The Parish Room, the original Board School building of 1837 is the oldest

part of the complex; it provides an ideal meeting and function room, complete with kitchen and toilet facilities. The adjacent building which originally was the church school now serves as a church hall - it is well used and self-supporting due to good management by volunteers Eileen and Susan Lee.

A large, five-bedroom Vicarage is adjacent to the church and there is a connecting corridor which houses the printing facility. It has a private enclosed garden to the rear and a garage at the side. Surrounding the complex of buildings is the church Graveyard, with the school of St James CE Primary abutting it. There is a large field to the rear, occasionally used by both the church and the school.

The PCC has set up a Finance & Fabric Committee to plan for and manage the repair and upkeep of the buildings. The Committee draws on the expertise and skills of church members. Over the last six years the church has managed to finance roof repairs in the wake of lead theft, major roof reconstruction for the Parish Room, replacement of the church heating boiler, and the conservation of the South Wall. Each of these projects has cost more than £30k.



As with many churches, the building needs continuing maintenance work, but planned by Finance & Fabric Committee maintenance is proactive rather than reactive. Currently the building is being put in good order for the long term. Application for listed building status is being considered to support this endeavour.

## The Ministry Team:

Fr Ian Wynne is a Self Supporting Priest licensed to the parish - his "day job" is in Newton, where he is a General Practitioner. He is supported by retired priests Fr Norman Price and Fr Denis Hall. Dr David Martlew is Licensed Reader, a retired glass technologist who currently is serving as a member of the CofE General Synod. Liturgical Worship is supported by a very able Altar Server team, by volunteers who read the Bible passages and lead the prayers of the people. We are fortunate to have a supportive PCC chaired by Churchwarden Nancy Holloway, with diligent secretary Eileen Lee and expert treasurer Sue King. Churchwarden Phil Peplow has much valuable experience in matters of Health & Safety and of buildings maintenance. A Ladies Choir and a Music Group make valued contributions to the worship and other events. There are teams of Flower Arrangers, of



Church Cleaners, of people who prepare the Church Magazine, of those who maintain the Churchyard, those who provide refreshments after festivals and principal services, and so on. We also have lay leaders of the various groups in the life of the church, and we can count on volunteers to help when needed.

*Festival Eucharist  
in conjunction with  
the Society of Mary*

## Church Services:

The regular and frequent celebration of the Eucharist is seen as the mainstay of our church life, and this is reflected in the current pattern of worship:

- Three Eucharists each Sunday morning. On the first Sunday of each month the main service at 10.00am is a Family Mass with baptisms. During 2016 there were 37 baptisms and 18 candidates were Confirmed by the Bishop of Beverley.
- Sung Evensong each Sunday evening. On the first Sunday of each month this takes the form of Solemn Evensong with Benediction.
- Eucharist each Tuesday evening and
- Eucharist each Wednesday morning.
- Rosary Group each Thursday evening.
- School Eucharist each Friday morning; during term time this is usually celebrated in the school, but on the last Friday of the month it is celebrated in the church. During the school holidays the Eucharist is celebrated in St Alban's Chapel - a small chapel at the East end of the main Nave.
- There is a Eucharist on Principal Feasts, Principal Holy Days and Festivals
- Morning and Evening Prayer is said each day - at the moment organised and led by lay volunteers.
- During 2016 our clergy conducted 43 funerals of parishioners and others having a connection with St. James' either at the Church or at one of the Crematoria

- Four couples celebrated their marriages here during the year.

Incense is used at the major Services. Most Eucharists are Common Worship Order 1 in modern language. BCP is used for Sunday Evensong each week, and also for the 8am Eucharist on the first Sunday of each month.

The Tuesday Eucharist often precedes meetings of Church organisations or of the PCC itself. It is attended on the first Tuesday of the month by Mothers' Union members; on the third Tuesday by members of the Cell of Our Lady of Walsingham; and on the fourth by members of the Guild of St. Raphael, when the Ministry of Healing forms an integral part of the service. Prayer for the sick is seen as an important part of the vocation not only of the Guild of St. Raphael but of the whole Church community. So great is the number of requests for prayer that they are divided across the three Sunday morning services and the Eucharists on Tuesday and Wednesday.



The schedule of Services each week is publicised via the Pew Sheet distributed at the Sunday Services and available in church throughout the week. Details are also posted outside the church main entrance, are in the church magazine and on the church website. As well as notices of all the church activities, the weekly Pew Sheet carries the readings and collects for the Sunday and also the names of people who have asked for our prayers.

## About the Congregation:

At the time of the 2016 Annual Parochial Meeting there were 235 parishioners on the Electoral Roll, of whom 105 did not live in the parish. However, of these; 29 lived just beyond the parish boundaries in other parts of Haydock. There has been little change to the numbers on the Roll for more than a decade. Average Sunday attendance figure is 132



(quoted on the Deanery Parish Share statement of 2016). During 2016 there were on average 212 people taking communion each week, many parishioners attending on both Sundays and weekdays.

The age distribution of the congregation is heavily weighted towards the older age group. On the positive side, this provides a reservoir of volunteers who spend time supporting the work of the church - so for example we have a large, supportive PCC. Clearly we lose

members each year because of infirmity or death, but we also attract new members so that overall the congregation is numerically stable. We are conscious of the "missing" age groups, so feel the need to find ways of reaching out to people in the teenage and mid years groupings. Use of internet technology, stronger links with the school and its families, better follow-up of people attending baptisms, funerals and weddings are among our ambitions in this regard. In conjunction with our new incumbent we would welcome the opportunity to prepare a Mission Action Plan.





There is a number of established groups within the life of the church, including:

- Cell of Our Lady of Walsingham - this is the largest Cell in England at this time.
- Rosary Group - this meets each week for worship based on a form of Scripture Rosary developed by the group.
- Guild of St Raphael - acting as a focus for the healing ministry, this branch is the largest on record.
- Mothers' Union - there is a thriving and active branch.
- The Women's Guild - a smaller number of ladies who meet each week.
- The Choir and the Music Group.
- Altar Servers - we have a substantial and expert team to support the various church Services.
- Saturday Lunches - served each month in the Parish Centre to support elderly people living on their own
- Monday Afternoon Ladies' Group - they chat and play dominoes, and are delighted to raise about £1,000 per year to support projects relating to the church.

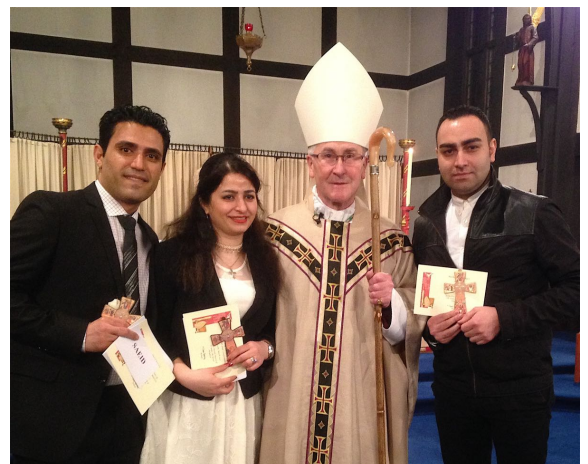
Each year we have a Parish Pilgrimage to the Shrine of Our Lady of Walsingham, and in many years this is the largest single group to visit the Shrine. The Guild of St Raphael branch organises appropriate trips too.

## **The Church and the Community:**

We take seriously the opportunities for outreach and service to the community presented by the services associated with life events - baptisms, marriages and funeral ministry. We have a lay volunteer who is an experienced bereavement counsellor. We hope to strengthen our strategies for following up the families involved in these events.

We organise a variety of social events throughout the year, both in church and visits elsewhere. These may present as fund-raising events, but importantly they are means of reaching out into the wider community. Major events are publicised by leaflet drops across the parish. The church website and local signage are also used to make the people of Haydock aware of what is happening, and to invite them to participate. Non-churchgoers do attend the many social events during the year; we are concerned to find new ways to encourage these people to become more involved with our church life.

During the past twelve months we have been seeking to support Iranian asylum seekers who have been billeted in Haydock by the Home Office. Members of the congregation have befriended them, provided food, clothing and furniture to meet their physical needs, and supported them through the harrowing business of the formal interview process. Also English lessons have been provided. In one case, two of our Ministry Team presented evidence before an appeal Tribunal when we felt a man's application had been wrongly turned down. Three were Confirmed by the Bishop of Beverley earlier this year.



The church has track record of involvement with Winwick Deanery, offering support to other churches at need. Differences in churchmanship do not hinder this collaboration. Amongst other things, our church representatives are trying to encourage other churches in the Deanery to take up the opportunities presented by internet technology. In line with the Archbishops' Council's initiatives on Digital Evangelism, we are seeking more creative ways of using internet technology for outreach to the whole spectrum of ages. This includes effective and appropriate use of email and social networking in strengthening follow-up and outreach.



*Ecumenical Walking Day, with our friends from Blessed English Martyrs*

St James' has good ecumenical friendship with the local Roman Catholic church, Blessed English Martyrs, which currently does not have a resident Priest. In conjunction with them we still keep up the tradition of an ecumenical Walking Day each year, and we share other acts of worship when we can - notably at Palm Sunday and in the Christmas Season. We'd like to find ways to develop this collaboration.



*Joint Act of Worship at Blessed English Martyrs Church*



## St James' CE Primary School:

Situated close to the church, our church School was rated "Outstanding" in a recent SIAMS inspection, and has been commended on the strength of the Church/School Partnership. Clergy engagement has been a key factor in this.



The strong Governing Body benefits from the skills of members of the congregation in the role of Foundation Governors; two years ago it secured the Governor Mark accreditation. In its most recent Ofsted report the school was designated as "Good", but the Governing Body is working with the Head Teacher to raise the standard to "Outstanding". Places at the school are sought after by families in Haydock.

A good number of children, and usually a small number of adults, come for Confirmation each year as a result of the on-going ministry in the school. The Friday Eucharists, whether in school or in church, are accessible to children but are not "dumbed down" in any way. So in later years children from our school will find the regular Eucharist services familiar. Behaviour of the children in church contexts is remarkably good. When school events are held in church there is a good support by many parents. Working with our Head Teacher, we are keen to strengthen further the integration of church- and school- life; we'd like to explore ways of developing the opportunities presented by the school to extend the church's ministry to the local community. We hope that the new incumbent will feel able to play an active part in the running of the school, as a Foundation Governor or perhaps as Chairman of the Governing Body



Children attend weekly Eucharist in school, but it is difficult to attract them to attend the main church services after they leave our school. We wish to look at strengthening our follow-up strategies. One proposal might be to have a Eucharist at 6.00pm on each Saturday evening, a strategy which our Roman Catholic friends have found helpful.

## Community focus events:

Each year the church organises fairly large events with a community focus, aimed not only at fund raising but at encouraging people in the area who are not habitually churchgoers to come and enjoy a community event with us.

**Family Fun Day** takes place each year in July, when we hope for good weather! We use the school playground and also the field to the rear of the church, where you can find a football tournament for local youngsters' teams, along with donkey rides, bouncy castles, and all sorts of goodies. Very well supported by the community.

**St. James the Great, Haydock**

## FAMILY FUN DAY

**Saturday 16<sup>th</sup> July**

**11.00 am. to 3.00 pm.**

**On the School Field, Shaw Street**

Bouncy Castle - Donkey Rides  
5-A-Side - Games - Competitions - Stalls and much more!  
Hot Dogs, Burgers, Drinks and Snacks  
Admission Free!

★★★★★★

Also on the field

### CAR BOOT SALE

£5.00 pre-booked and pre-paid - £8.00 on the day  
Contact 01942 727956 or 07934 068 496

★★★★★★

Don't forget to buy your tickets for  
the Grand Draw, which will be drawn on  
**SUNDAY 24<sup>th</sup> JULY**  
1<sup>st</sup> Prize £100!

★★★★★★★★★★★★★★★★

**St. James the Great, Haydock**

## CHRISTMAS FAIR



### AND WREATH SALE

**Saturday 5<sup>th</sup> December**  
**10.30am to 2.00pm**

**In the Parish Centre**  
**Church Road**

Santa : Stalls : Tombola: Cakes : Refreshments  
**ADMISSION FREE**

**Christmas Fair** is scheduled for late November or early December, to provide an opportunity to buy last-minute presents. In spite of the many competing events during the lead-up to Christmas, our Christmas Fair is usually well supported by the Haydock community. Refreshments are served, children's games are in evidence, and of course there is chance for the children to meet Father Christmas!



**Pantomime** always attracts the children, who bring their parents and grandparents during the period after Christmas. The performance is based on the concept of a Radio Programme, so the cast have scripts in their hands. Costumes are fanciful, of course. Our clergy usually take part in this event with gusto - it provides an opportunity for non-churchgoers to see clergy in a new light! The Parish Centre provides an ideal venue for such a performance. The audience always includes people who don't usually come to church.

**Choir Concerts and Band Concerts** have taken place in the main Nave of the church itself. We have been fortunate that the Warrington Male Voice Choir have been willing to present a number of concerts at St James'. Known internationally as The Peace Choir and under the



On the occasion of its 150th Anniversary  
St James the Great, Haydock  
invites you to enjoy

# A Choral Christmas

with the internationally famous

## Warrington Male Voice Choir



at 7.30pm on

Friday 9th December

Tickets now on sale, price £8

Come to church and buy them, or else contact David Martlew  
at <David.Martlew@gmail.com> or phone 01 744 24159

patronage of Terry Waite, this body of men have won national choir competitions and even came near to winning their category in the Eisteddfod at Llangollen. These events are advertised in the press and within the parish via letterbox drops; the church is usually well filled! Together with concerts by local youth bands, these popular events are appreciated and supported by the Haydock community.



**Chez Curé** has been the title for a series of highly popular gastronomic events over recent years. Clergy have swapped their vestments for aprons and (with considerable help and support from members of the congregation) have been willing to cook and present a



gourmet menu dinner for up to 90 guests. These themed nights have appealed to church-goers and non-churchgoers alike, and you have to be quick to secure a place! Many of the guests are non-churchgoers; Chez Curé provides a non-threatening context in which they may experience the life of the church. We believe that this plays a part in encouraging them to come to church at times of crisis or bereavement.

**Mothers' Union Garden Party** - again, this is a community-facing event which is well supported by Haydock people. It has taken place both in the garden of a private house or in the Vicarage Garden (as seen in the photograph). Whilst these events are effective in raising money for Mothers' Union projects around the world, they also provide opportunities for churchgoers and non-churchgoers to meet and chat.

These are some examples of the social events which happen quite frequently in the life of the church.





## Appendix 1: Guild of St Raphael

The Guild of St Raphael.  
Christ's Ministry of Healing

The Guild has a local branch based here at the Parish of St James the Great, Haydock. "Healing through Prayer"- that is the wording on our banner and these are words which we are very proud of.

Our branch of the Guild Started in 1980 and currently has more than fifty members. I was asked to take over as branch secretary in 1988 and I still hold this position today. We meet on the last Tuesday of every month, for a Healing Eucharist and Laying on of Hands. After the service, we meet in the Parish Room for refreshments and everyone is given a prayer card with four names on it, with the promise that they will pray for those named every day for the next month.



*Laying on of  
Hands*

*Ministry offered  
by members of St  
James' Guild of  
St Raphael at a  
meeting of the  
Society of Mary*

Christmas and Easter cards are also delivered, enclosed with a handwritten message. The messages we get back from their families saying, how much this means to them is very humbling. They know that they are not forgotten and prayers are being said daily for them.

Everyone is welcomed and can join us at our services

*Edna Clough  
Branch Secretary.*

## Appendix 2: Saturday Lunches in the Parish Centre

On the first Saturday in the month, we have an Afternoon Tea in the Parish Centre. Most people who attend have at some time lived or worked in Haydock. Our eldest lady who attends is ninety-four. She was a midwife at our local Doctors when she was working. She now lives in Platt Bridge with her son and his wife. She has only finished driving this year, so now if her son is unable to bring her she takes a taxi. We have another lady who attends. This is her only outing as she finds it difficult getting out. Her daughter brings her to Haydock. Our centre is ideal for her because everything is on one level. In addition, she meets people she knew when she lived in Haydock.

This is a small group, we never have more than twelve or fourteen people present. The fact that we only have a small number at the Afternoon Tea makes it ideal for the people who attend. They don't feel overwhelmed by people. They can speak to everyone. It is a lovely group.

The third Saturday in the month, we serve lunch in the Parish Centre, this is for anyone. We have people from local churches and churches in Newton-le-willows attending. In addition, people come from further afield. We have people who come as a family. One family who comes and takes up a table for ten. We have people who see our board outside the centre and call in. One lady saw our board on Saturday as she was walking passed with her grandfather. She called in with him, now all the family come each month.

We don't run the Lunches and Afternoon Teas just to make money. We do these things because we want to help people to feel welcome and to be happy. I think we do this.

Dear Ladies,

Just a few words to say Thank You to you all, for helping Eileen with her meals (serving) and also for your kindness and friendship to us both and the other diners - it is much appreciated.

Can we also take this opportunity to wish you all a Merry Christmas and a Good New Year. May God Bless you for all your efforts - you all deserve a Gold Star!

Yours

Christine, Joe Wildman

XXXXX

Dear Ladies,  
Just a few words to say Thank You to you all, for helping Eileen with her meals (serving), and also for your kindness and friendship to us both and the other diners - it is much appreciated.  
Can we also take this opportunity to wish you all a Merry Christmas and a good New Year. May God Bless <sup>you</sup> for all your efforts, you all deserve a gold star.  
Yours,  
Christine Joe Wildman  
XXXXXX

To the St James dinner Ladies,  
Please accept this small donation as a thank you for all the hard work you put in to provide us with all those lovely and tasty dinners. Wishing you all the best for the coming festive season,  
Best Wishes  
From Beaty Hamblett.

To the St James dinner Ladies  
Please accept this small donation as a thank you for all the hard work you put in to provide us with all those lovely and tasty dinners.  
Wishing you all the best for the coming festive Season

Best Wishes

From Beaty Hamblett

## Appendix 3: Walsingham Cell



The Cell of Our Lady of Walsingham, St James the Great and St Edmund Arrowsmith was established on 15th October 2006. All such cells are associated with the Society of the Holy House of Our Lady of Walsingham, in Norfolk. Each cell has two Saints in their name - in our case our own church patron St James the Great, and a Saint who was born in Haydock just across the road from our church, St Edmund Arrowsmith. We started with a membership of 25 people, which grew to 50 members; over the years sadly we have lost members due to death, moving away or changes personal circumstances. Currently we have 48 devoted members, ages ranging from 20 years to 87 years, both male and female.

Each month we meet in the Parish Room within our church after the Eucharist. Over the years we have had various speakers, fundraising events such as Breakfasts, Strawberry & Wine Evenings, Race Nights and raffles at Christmas and Easter. Each year we hold a May Devotion Service. All are welcome at these events, members or not. People from the local Roman Catholic church also have attended. The attendance of new visitors and neighbours helps to promote parish fellowship. The money we raise for the Shrine evidences our commitment to supporting the life, work, mission and ministry of the Shrine. Over the last ten years we have donated £17,000. We have very generous members (and non-members who support us); each year our Cell goes from strength to strength as a direct result of dedication, commitment and generosity.



*Parish  
Pilgrimage  
Group at  
Walsingham -  
August 2016*

Devotion to Our Lady shines through, evidenced by the number of pilgrims we take on our Parish Pilgrimage to Walsingham each year. For a number of years we supported the Walsingham National Pilgrimage day event. On several occasions we have financed a family and individuals to go to the Youth Pilgrimage. Also the Cell finances five children via the Shrine's God-parenting Scheme - and some of our members also finance young pilgrims in this way. Each year we send money to the sisters of St Margaret's Priory to help and support their continuing work with the sick, poor and homeless. We are committed to donating money to the various projects requested by the Shrine.

Each year we attend day pilgrimages to Ladyewell and to Thornton-in-Craven, where there is a Saxon holy well at the church of St Mary the Virgin. Members of the cell and other members of the congregation support the Society of Mary in the North West, and travel to participate in church services it organises in various churches over a 50 mile radius. We draw inspiration from Our Lady's life of humble and courageous faith and trust.

*Dot Beesley  
Cell Secretary.*



## Appendix 4: The Rosary Group



Every Thursday at 7pm our Rosary Group meets in the Lady Chapel to say the Scripture Rosary. The result is a quiet and contemplative Service which lasts half an hour.

Our Rosary Group started on 10th July 2008, with twelve members of our church and four members of the local Roman Catholic church. Today we have twenty members, including one gentleman from Blessed English Martyrs church. Our average attendance is about fifteen people. We have a Rota, and each week a different member leads the Service in which we focus on one of the traditional Mysteries. We pray for people who have made special prayer requests for various reasons. Some members of the Group are also members of the Walsingham Living Rosary.

We developed our own version of the Rosary; we sent a copy of this to Bishop Lindsay Urwin when he was Administrator of the Shrine and he tells us he uses it in his private prayers. It can be downloaded from the church website at <[www.stjamesthegreat.org.uk](http://www.stjamesthegreat.org.uk)> and several local churches use it, among them St Columba's Anfield, St Agnes in Liverpool, St Paul's Croxteth, St Thomas Eccleston and St John the Divine Pemberton.

Some members went to Townley Hall and we were permitted to say the Rosary in their historic chapel. We visited Coventry where was a pre-Reformation shrine and statue of the Virgin Mary; the site is now a garden and we said the Rosary before the restored statue. Some youngsters who were listening asked for copies because they had found it very moving - it was wonderful to reach out to these young people knowing that they were being touched by what we were doing.

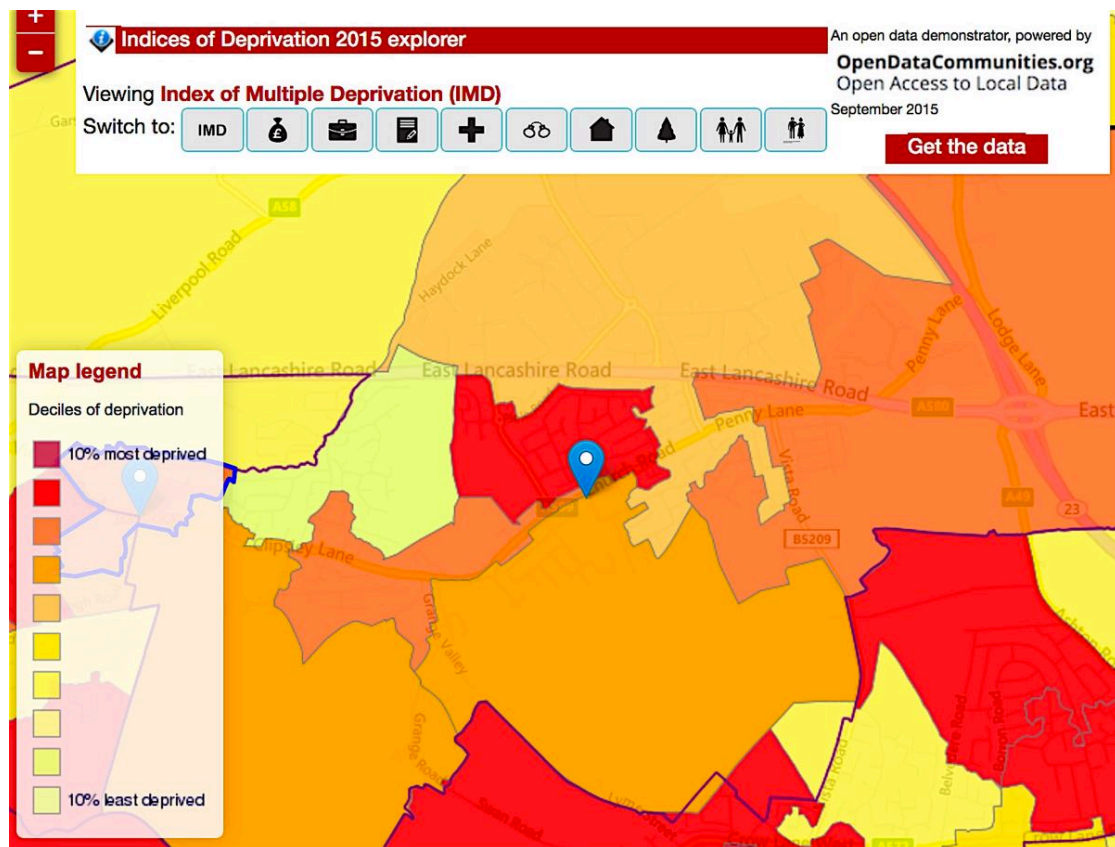
Many people think that the Rosary is just a Roman Catholic thing, but it has been a valued spiritual practice in the Orthodox and Anglican traditions also. In praying the Rosary we declare our Christian faith using the words of the Apostle's Creed and we use the well-known Lord's Prayer and the traditional Hail Mary. Rosary Beads and useful booklets about the Rosary are for sale on the church bookstall.

When praying the Rosary we are inviting the Blessed Mother of God to show her care for us.

*Dot Beesley*



## Appendix 5: Map of Social Deprivation Indices:



This data, from the web pages at

<<http://dclgapps.communities.gov.uk/imd/idmap.html>>

shows the mix of areas which make up the parish. Although there are some areas at the high end of the deprivation measures, other areas are around the middle of the distribution and some at the least deprived end.

The impact of deprivation is perhaps most visible in the primary school context; our school has higher than average proportion of Free School Meals children and receives significant Pupil Premium payments to assist disadvantaged pupils.

## Appendix 6: Ladies' Monday Afternoon Social Group

This group started to meet in September 2007, to provide an opportunity to get together and play dominoes. The group is run by Pat Twiss and Mary Platt. Usually about twelve people attend each week.

All money raised by the group is given to the church - each year we raise about £1,000. Usually we have projects for this money - for example:

- Providing a new carpet for the Sanctuary in the Lady Chapel
- Refurbishing the toilet in the Clergy Vestry
- Provision of water heaters in the Parish Room Kitchen
- A new electric fire for the Parish Room
- New carpets in the main church

and so on.

Our next project will be to raise £1,000 towards restoration of the carpet in the church.

## Appendix 7: Missionary and Charitable Giving

In addition to the donations to charities made by the PCC from its own resources, and the customary Lent Box appeal for USPG which raised £350 the Council continues to support and encourage charitable activities undertaken by Church members.

The following are some examples from 2016:

- **Additional Curates Society:** £455 was contributed from the Advent to Candlemass Appeal collecting boxes and donations.
- **Chernobyl Christian Care:** At Epiphany church members once again donated toiletries and other items to be sent to disadvantaged families in Eastern European communities.
- **Children's Society:** £710 was raised by Church and School during the Christmas period and many Church members continued to support the Society through collecting boxes, raising a further £900.
- **Harvest Gifts:** Gifts of tinned foods were donated to those in need and the proceeds of the Harvest Supper, amounting to £760, were donated to Christian Aid.
- **Lent Lunches:** These raised £1,327 for distribution to a variety of charitable causes.
- **The Leprosy Mission:** a number of church members take collecting boxes for this charity.
- **Mission Link – Diocese of Wiaowo, Ghana:** The aim for fundraising at special social events to contribute at least £2,000 to the Diocese each year was met.
- **Shoe Box Appeal:** School and Church again co-operated in responding to the appeal organized by the Rotary Club which received a good response.
- **Walsingham Cell:** A donation of £500 was made towards the costs of the Walsingham Festival Day held in Liverpool Cathedral. £150 given in support of the Youth Pilgrimage Godparent Scheme and a donation of £100 was made to the Sisters of the Priory at Walsingham.

## Appendix 8: Sunday and Wednesday

After the 10.00am Service on Sundays, coffee, tea and biscuits are available in the Parish Room. This is run by Mrs Joan Martin with the assistance of a group of willing helpers. Cakes are also available for quite a few occasions - such as birthdays &c. All the tea, coffee &c are donated by church members (and a few people who do not attend church). The people who serve on Sundays do not take any money out of the weekly proceeds, thus assuring a steady amount each week. The amount taken is between £80 and £90 per month. Accounts are kept by Mr Roy Martin, and this is posted to the Church Funds. On a smaller scale, Wednesday is the same as Sunday.

These gatherings are a good time for people to chat and to catch up with friends. New members get to meet other members of the congregation informally.