

St George's

The Annual Report



Preach Jesus, Make disciples, Serve the city & Send out leaders



Dear Church family

At St George's, we have a vision to preach Jesus, make disciples, serve the city and send out leaders. I hope this 2018 Annual Report gives a glimpse of what that looks like in practice. In 2018 we focused on integration (of our very diverse church community) and evangelism. We've heard wonderful stories of people encountering Jesus, and seen him at work in many different ways. Each person and each story is significant; thank you so much for the part you play in the life and ministry of St George's

Lizzy Woolf (Rector)



Our Sunday services at 10.30 and 18.30 are central to life at St George's. Both services

are lively and informal, with sung worship, biblical teaching and prayer, and a typical Sunday sees about 400 adults, split evenly between the 2 services, and over 50 children. In 2018, we baptised 35 people, including 7 babies. We have 224 brilliant volunteers who serve on Sundays, including stewards, prayer ministry, welcome, hospitality, readers, communion servers, translation into Farsi, kids, youth, worship and technical.

In January, at our Vision and Gift services, we committed to pray, serve and give, and raised £93,000 in one-off gifts and increased regular giving.

At Easter, a reflective Good Friday service was followed by a joy-filled Easter Sunday service featuring our very own Transformation Machine.

In October, we held our first Hello Sunday, welcoming 665 people.

Sundays & Special Services

In November, 32 people were confirmed at an 1830 service. 4 shared their stories of faith: one grew up in St G's, one came to faith here as an adult, an Iranian found Jesus in a refugee camp, and a Lighthouse brother.

On Remembrance Sunday, we particularly remembered those from our parish who died in World War 1, surrounded by a moving art exhibition inspired by their stories.

At Christmas, we welcomed over 2,200 people. Many youth and students brought friends to Contemporary Carols; our Carol service had a wonderful pop up choir, orchestra and band; Family Nativity had an amazing set and acting; on Christmas Day we celebrated with All Age Holy Communion and crackers. This year we also hosted 2 civic carol services, Crypt Carols, and the LGI's baby loss memorial service.



Lighthouse

Lighthouse is our community that reaches out to those battered and bruised by the storms of life, including homelessness, addiction, poverty and mental health crisis.

Our Sunday services, held at 12.30 in the Crypt continue to thrive with around 80 guests each week, and more for lunch. Wednesday Drop In offers space and friendship, followed by 'circle time' where we gather to share about our weeks, study the Bible, and pray together. These are precious times of support and encouragement. Lighthouse Academy completed modules on prayer, academy of life, and keys to freedom, with 15-20 students each week. Each module was celebrated with an outing, and an overnight retreat in June attended by 20 people.

Our pastoral care has become increasingly specialised and recognised within the city. We connect regularly with police, hospitals, and mental health crisis teams. In 2018 we were invited by Leeds City Council and Adult Social Care to be part of key conversations affecting policy on homelessness and provision for vulnerable adults in our city. We are also developing as a training hub for ordinands, curates and other groups wanting to work with the marginalised.

In 2018, our volunteer team grew to 27, many of whom are now mental health first aid certified, thanks to funding from West Yorkshire Police.

Kids & Youth.



In 2018, 57 children and young people (0-14s) regularly attended St G's Sunday morning groups, designed to equip them to be life-long followers of Jesus. 17 young people attended Roots Friday (11-16s). There is an encouraging sense of community, with children and young people growing in confidence.

St G's Tots, our Tuesday morning toddler group, sees new families most weeks. In 2018, average attendance was 29 children plus their parents and carers. The group outgrew St G's Centre and moved upstairs into the Church where there is much more freedom and space.

Special events included 3 weekends away: 6-11s (19 kids), 11-14s (36 youth), 14-18s (14 youth), regular Muddy Puddle walks, family picnics, Easter Eggstravaganza, and a Light Party to which children invited friends. Our youth band also re-launched.

At Abbey Grange CofE Academy, we led weekly assemblies and a lunchtime club in partnership with Leeds Faith in Schools, a special Easter Communion and Contemporary Carols.



We are so grateful to our 80 volunteers, including those who help in our groups, our safeguarding officers (who help us to follow safeguarding legislation and good practice), and those who visit Eckersley House (supporting families of children in the LGI).



Students. Students. Students. Students.



We have students from all Leeds universities at St Gs. Over 45 new students joined us in the autumn, and we now have around 80 domestic and 20 international students well connected to us, plus a fringe of around 60 mainly non-Christians with whom we have regular contact. We usually see 45 students at Student Network, 8 at International Student Network, and 60 at student teas (before 1830 each week). 40 students serve in various ministries at St Gs, and many invite friends to services and events.

2018 Highlights Include:

- taking 52 students away for a weekend which challenged us to be lovingly present and lovingly disruptive in daily life;
- a Chinese New Year party for 65 students hosted by internationals;
- the biggest ever June Project, a week of community action around Hyde Park, co-led by one of our students;
- a 10.30 welcome service following which 36 international students were hosted for lunch in congregation members' homes;
- co-leading an 'Introduction to Jesus and the Bible course' for around 20 international students
- a weekend in Cambridge for 25 international students
- students bringing around 100 non-Christian friends to Contemporary Carols
- a ceilidh for 45 international students followed by Midnight Communion at Wrangthorn on Christmas Eve





Networks & Small Groups

In a large church, networks and small groups are vitally important. These groups meet regularly during the week in different locations around the city to build community and support each other in discipleship. We finished 2018 with 32 small groups and networks, including 5 new groups. We are so grateful to our small group and network leaders.

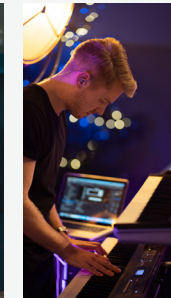
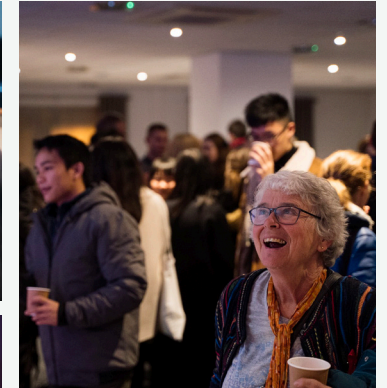
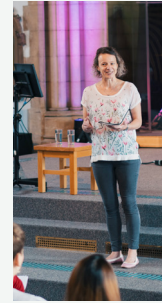
We have 3 special networks. Farsi Network is attended by about 35 Iranians each week. In March we held our first multicultural Persian New Year celebration, attended by nearly 200 people of all nationalities. Dialogue and Reconciliation Network continued inter-faith relationships, taking Muslim friends out for a meal on the day Muslims throughout the country were threatened with violence, and hosting an anti-semitism discussion with Jewish friends. Extra Time Network for over 50s organised a monthly midweek Holy Communion with lunch, informal get-togethers, and a Christmas concert.

Alpha



Alpha is a series of sessions exploring the Christian faith. Each talk looks at a different question around faith, and is designed to create conversation.

We ran Alpha three times in 2018, introducing a new summer course in a local café. Around 50 guests (including 10 students) completed the course in 2018, supported by a team of 22 volunteers. This year we have been exploring new ways to make Alpha as relaxed and welcoming as possible, including updating our décor, a live band and non-alcoholic cocktails for week one, and the new film series.



Partnerships

Resource Churches in Leeds – St George's is one of 5 Resource Churches in Leeds, working together under the leadership of Bishop Paul Slater. The others are St Matthias Burley (which has merged with Riverside), St Edmund's Roundhay, St Luke's Holbeck and St Paul's Ireland Wood. Being a Resource Church affirms our long-standing city wide vision and ministry, and challenges us to give away resources strategically in order to bless our city. All Resource Churches are expected to church plant.



Lighthouse and worship. A further 5 interns serve in other local churches. The interns live in community houses, and receive weekly teaching, mentoring and supervision.

St Paul's Ireland Wood church plant – In January 2018 we sent a team of 48 congregation members to St Paul's Ireland Wood, where they joined an existing congregation of about 25. We also gave £50,000 from our Strategic Mission Fund. In their first year, they have grown by an additional 30 people, launched a second Sunday morning congregation, started a toddler group (which now connects with 120 families), built partnerships with local organisations, and held several successful community outreach events.



Interns – 3 interns completed their year in July 2018. In September, as part of our role as a Resource Church, we expanded the scheme in partnership with the diocese. 7 interns started at St G's serving kids, youth, students, international students,



Wrangthorn mission partnership – In 2018, St Augustine's Wrangthorn served their community with services, children's groups, Park Run Hospitality, international student ministry and occasional family events. Phase 1 of the building project was completed, with a new entrance opening the building practically and symbolically to the parish. St George's funded a half time Church Office and Hall Manager, and sent clergy to lead Holy Communion monthly during the interregnum.

St George's Crypt – In 2018 the Crypt provided 11,482 bed-nights of accommodation in the Care Centre (an average of 31 people per night), and served nearly 56,000 hot meals. The Growing Rooms abstinence recovery project expanded with the purchase of 2 new houses. Work started on 2 major building projects to provide supported housing. Crypt and St G's staff pray together weekly, and many others from St G's support as trustees, Angels, or volunteers.

Local mission – We have 3 key local mission partners: The Crypt, Leeds Faith in Schools, and Kidz Klub. In 2018 we also supported Transformations Leeds, June Project, Spacious Places and Manuel Bravo.

Overseas mission – in 2018 we supported 6 overseas mission partners, most of whom shared news in person at our Global Passion evening. In June 6 students from St G's went to Hungary, and in July 10 people went to Romania on short-term mission trips.

Summer camps – over 100 people from St G's went to New Wine Inspire in August. Many served on team at New Wine, including 5 team leaders, and other summer camps, including 2 overall leaders.



Resourcing the Ministry

Staff team – we have a fantastic staff team including clergy, ministry staff, operations staff, plus Lighthouse pastors and interns. They work hard to support and equip our many volunteers. In 2018 we said goodbye to Janet Gibson after 19 years as our Church Administrator. We appointed Martin Euden as Operations Director, Elliemae Hebden as Youth Worker and Phil Marshall as Lighthouse Warden. Joanna Seabourne became Director of Interns and Area Dean of Headingley. Lottie Jones, Millie Cork, and Leah Thompson went to start ordination training.

PCC – the Parochial Church Council consists of clergy, churchwardens and elected representatives of the congregation. It works with the Rector to promote the whole mission of the church, with particular responsibility for finances, fabric and staffing. Significant strategic decisions included the development of our intern scheme and mission partners.

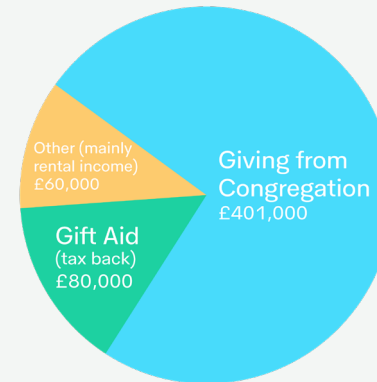
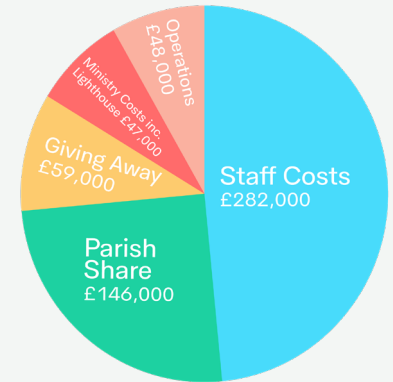
Prayer – prayer underpins all we do. We have a dynamic and varied monthly prayer meeting. In May, we partnered with Leeds Minster and Riverside to take part in Thy Kingdom Come, hosting a prayer space at Holy Trinity Boar Lane, with daily lunchtime services and some evening events, including one with the Archbishop of York.

St George's Centre – had an exceptional year in 2018 with new and repeat business and some larger contracts. This enabled it to contribute £72,000 towards supporting the wider ministry of St G's. We bought 7299 (£35,000) meals from Nurture at St George's Crypt, enabling their volunteers to develop skills and experience. We are particularly pleased to provide a safe space for charities to explore sensitive issues.

Financial Summary for 2018/19

(all figures have been rounded to the nearest £1,000)

Expenditure:
£582,000



Income:
£541,000

Shortfall for 2018: £41,000

Contribution from Church Centre: £72,000

Year end surplus: £31,000

Updated budget for 2019 (following Vision & Gift Day)

Projected shortfall for 2019: £ 103,000

We expect to meet this by using a contribution from the Church Centre (£43,000), the surplus from 2018 (£31,000) and most of the surplus from 2017 (£29,000)

PREACH JESUS

SEND OUT LEADERS



MAKE DISCIPLES

SERVE THE CITY