

“An open church – open to all”

Parish Profile 2020

Priest-in-Charge



An Introduction from Bishop Rose

Thank you for taking an interest in this role as Priest in Charge of Cheriton with Newington. You'll see from the rest of the profile some of the specific things that the benefice is looking for – and a little of what the team here hopes the future may look like. Of course, part of your discernment process in coming to this role is gaining a sense of the bigger picture of us as a diocesan family, our vision and priorities for the future.

Who we are

Founded in 597 by St Augustine, Canterbury Diocese is the oldest diocese in England and has a special place in the life of the national and worldwide Church. With its iconic Cathedral it forms a focal point for the life of the whole Anglican Communion, offering a spiritual home and place of pilgrimage for people from every nation and walk of life.

Kent is renowned as the 'Garden of England' and this rural heart is core to our identity - yet the communities we serve are very diverse. Our Diocese stretches from Maidstone to Thanet, from the Isle of Sheppey to the Romney Marsh. We have 350 miles of coastline with historic ports and seaside resorts, alongside rural communities, market towns and commuter-belt urban developments. Affluent areas often sit alongside pockets of major deprivation, offering an exciting and challenging mission context.

Where we're heading

At the heart of all we do is a vision of transformation for ourselves and our communities: no one can encounter God and remain unchanged. In our diocese, we want to increasingly become a Christian community transformed through encounter with Christ, overflowing to transform and bless the families, homes and communities we serve in Kent: *Changed Lives* → *Changing Lives*. In your role, in your place, we'll be looking for you to play a crucial part in making this vision a reality.

Changed Lives → Changing Lives unites us in purpose but will be expressed in different ways according to what makes sense for different parts of our diocesan family. It's also a living strategy – as we listen to God and one another, the shape of our work together will undoubtedly change and grow. Could you help to develop this vision for the future? Find out more [here](#) or speak to the Ven Darren Miller, Archdeacon of Ashford on 01233 712649 or at darren.miller@archdeacashford.org.

Our commitment to you

We know that supporting healthy, flourishing ministers (lay and ordained) is crucial for a healthy, flourishing diocese. That's why we offer the 'Canterbury Diet' to all our incumbent ministers – this is an intentional programme for ministerial development, health, growth and faith. A lay programme is in development too. Additionally, we offer a range of specialised training events, as well as opportunities for growth in prayer and spirituality.

In short, I hope that you will be as excited by our vision, priorities and opportunities as we are. Be assured of our prayers as you consider your next step in ministry,



The Rt Revd Rose Hudson-Wilkin

Bishop of Dover and Bishop in Canterbury



The Archdeacon writes:

The parishes in the Benefice have used the past year to work hard at working together to serve God and their communities. There have been some challenges for them to overcome and they have done so together, with the help of an excellent interim priest-in-charge. In expressing a direction for ministry, they have embraced the diocesan strategy, 'Changed Lives – Changing Lives'. The people of these churches wish to build on what they have inherited, their own traditions and experience and their hopes for the future. The ideal priest for them would be someone who is comfortable in traditional church and who can nurture new ways of being God's people alongside. With your imagination, empathy, leadership and nurture, there is much that God's people in this benefice can achieve in a time of change for both our world and our church.

The Ven Darren Miller

Archdeacon of Ashord

Our Benefice “An open church – open to all”

Our Benefice of Cheriton with Newington consists of three parishes and their churches, all different in their own way but all working together towards the vision of “Changed Lives - Changing lives”. During the last year the Benefice has greatly united. We now work closely as a unified Benefice and are looking for someone who can encourage us in our growth and build upon the foundations that are now in place.

We have many links with other groups in the community and church groups such as the Church Army, Churches Together and the Rainbow Centre which supports the homeless and families in need.

Our Vision

We have a united vision in place as we move forward into a new decade to take our mission groups into the wider community.

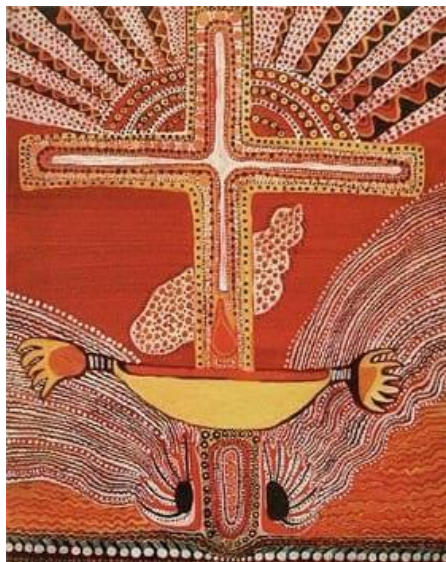
We see many opportunities ahead for us to promote the Diocesan vision “Changed lives - changing lives”.

With the expansion of the population with all the new builds around Cheriton, we would like to take our churches forward in our evangelistic work to show God’s love, enrich our communities and make a haven for all to feel comfortable and loved.

What we are looking for in our new incumbent

We need someone who will encourage us in our Pastoral care for our communities. Someone who is a team builder. We are not looking for radical changes but to build on what we have achieved so far with our groups. Someone who will empower us in our vision, to work alongside us as we continue our inclusive journey, to support and help care for us and to be a presence amongst the community

Good communication skills are needed and working with us, a good sense of humour!



Our Churches

There are three churches in our Benefice with three PCCs and five Church wardens.

Each church hosts a Benefice Service on a three monthly cycle.

All three churches are supported by “Friends” groups who contribute to the upkeep and fabric of the buildings. A variety of events are held including talks, concerts and social events that attract the wider community.

We value traditional worship services as well as endorsing the “Fresh Experience” ethos.



Newington Church

Newington Church is an ancient grade 2 * listed building set in a small rural village. Despite only having a small congregation the church is integrated into the village .There is a very active Friends Society who reach out to the wider community through its activities as they organise a varied program of events to appeal to all interests.

There is a large churchyard that is still “open” and a peal of six bells.



The local war memorial outside the church is a focal point for the village.

Gathering by the war memorial as part of the Remembrance observances.



Celebrating our patronal service.



St Martin's Church



St Martin's is a grade 1 listed building set on the outskirts of Cheriton but is now in an area of major development. This will give great opportunities to introduce new ideas and "Fresh expressions" for our new incumbent.

It has one of the largest churchyards (which is now closed) in Kent and is a haven for wildlife. Samuel Plimsoll is buried there and every year the local society attend a memorial service.

We have an active Choir that help us with our worship as well as a bell ringing team who ring our peal of eight bells weekly. A hand bell group also meets weekly and helps with our worship and play at events in the wider community.

We have a Facebook page (www.facebook.com/StMartinsCheriton) where people can see events, learn about services with prayers, poems and pictures for reflection.

A Bible study group also meet in each other's homes on a weekly basis.



St Martin's has a growing congregation and has introduced a lot of ideas on working with the local church schools, Kent County Council (KCC) schools and local playgroups. This has included running different "experience days" for groups covering topics such as Harvest, Christmas, Easter and Pentecost.

Our work with children is now a Benefice-wide initiative and there is a group set up for working with young people across the churches.

Our local school have helped conduct our Patronal Service taking the lead in the worship.



St Martin's Church has a Rectory field which is used by the primary school for sports. There is a hall (that has seen better days!) which is used by various groups from the local community and for church events. There are two Church schools in our Parish, St Martin's Primary and Seabrook Primary, as well as a large KCC school. A Parent and Toddler Group meet weekly and is run by a member of the congregation. Also there is a St Martin's Pre-school which is accommodated in the local school with whom we have good links.

All Souls Church

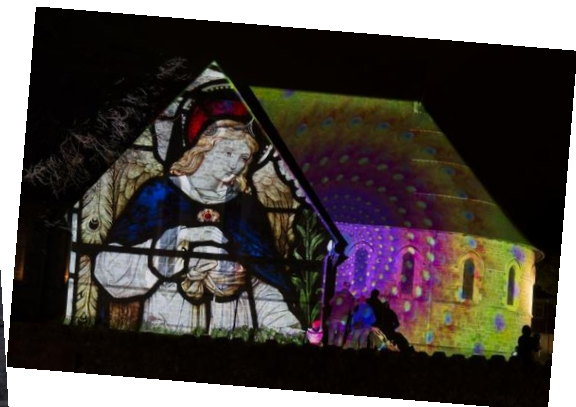


All Souls is celebrating its 125 year Anniversary this year and is situated in the heart of Cheriton High Street which has half a dozen churches of different dominations, a number of convenience stores, cafes, takeaways and numerous charity shops.

We have a choir which help us with our worship.

We are becoming a main part of the local community and the church and hall are used for many local events.

This includes the annual Tree of Love for the Hospice and the church takes a central part in the Light Festival organised by the local Arts Group, Strange Cargo.



Every Saturday the hall is opened for a community café which is always well attended.



Parts of the Parish are in a social deprivation area but the Church works hard with the local community to overcome any difficulties.

The Mother's Union meets regularly and also supports events such as our seasonal fairs.

There is a thriving Drama group with members from the local community as well as the congregation.

The hall adjacent to the Church is used by local groups as well as for church activities.



Seabrook School

Seabrook School is a small four class Primary school and has an outstanding rating by OFSTED. There are currently about 120 pupils attending the school under the guidance of an executive head who also works with St Martin's. The school is situated by the Royal Military Canal and is about one mile from St Martin's church. The school use St Martin's regularly for their Worship and Seasonal services.

The school is a Voluntary Controlled church school.

St Martin's School

St Martin's School is situated in Horn Street very close to St Martin's Church and regularly use the church for Worship.

It has seven classes with about two hundred and ten pupils on role and works under the same executive head as Seabrook School.

It has a rating of outstanding by OFSTED

St Martin's is a Voluntary Controlled church school.

ALL Souls School

All Souls School is situated in the centre of Cheriton close to All Souls Church.

It has eleven classes and is rated as good by OFSTED. The school has a higher than average SEN intake. Last April All Souls became an Academy with Aquila, the Diocesan Multi Academy Trust.

The school take an active role in the Church life helping with Sunday services and celebrating their own worship there.

There are three other primary schools in the Benefice with whom we are developing links with.

Cheriton Primary (KCC) A large multicultural primary.

Harecour Primary (KCC) A small primary.

Morehall Turner School A small primary that is part of the Turner Free school.

Turner Free School A Secondary school that has recently been established

What we have to offer

As a Benefice we are committed to working together to reflect God's love. To take our mission forward we need to embed the work that has been started.

We have various lay readers and pastoral groups to help with our services. We encourage Baptisms as part of the service and welcome any age child into our congregation.



We are planning to start a Web of Care network to ensure that there is always someone available for everyone. These are some areas where we would welcome someone to lead us forward from our Foundations. Our work with young people, our web of care and our engaging with the local communities.

Communion is taken to those who cannot attend church and to local nursing homes and this part of outreach is deemed very important. Our Web of Care is something that we hope will build upon this ethos to ensure that everyone has access to the Lord's word and can help with their needs.

Our Outreach for young children is gaining strength and we are trying different ways to engage with the younger members of the community. All Souls' are making links with the local Scout groups and planning to take some worship into the local church school. St Martin's is planning to host a Baptism party and pram service to help engage the parents.

There is a plan to provide a new permanent rectory. However, for now the house at Horn Street is being offered but there is also an opportunity to explore other options if that isn't felt to be the right place for the candidate.

About the Area

Folkestone is a vibrant and up and coming neighbourhood but there are areas of high deprivation. There is a lot of development planned over the next few years. Good links with London are accessible on the high speed trains from Folkestone Central and Folkestone West. Also there is easy access to the continent via the Channel tunnel.

There is a lot of history around the vicinity with Dover Castle nearby and the White Cliffs. Canterbury is within easy reach by car or public transport.

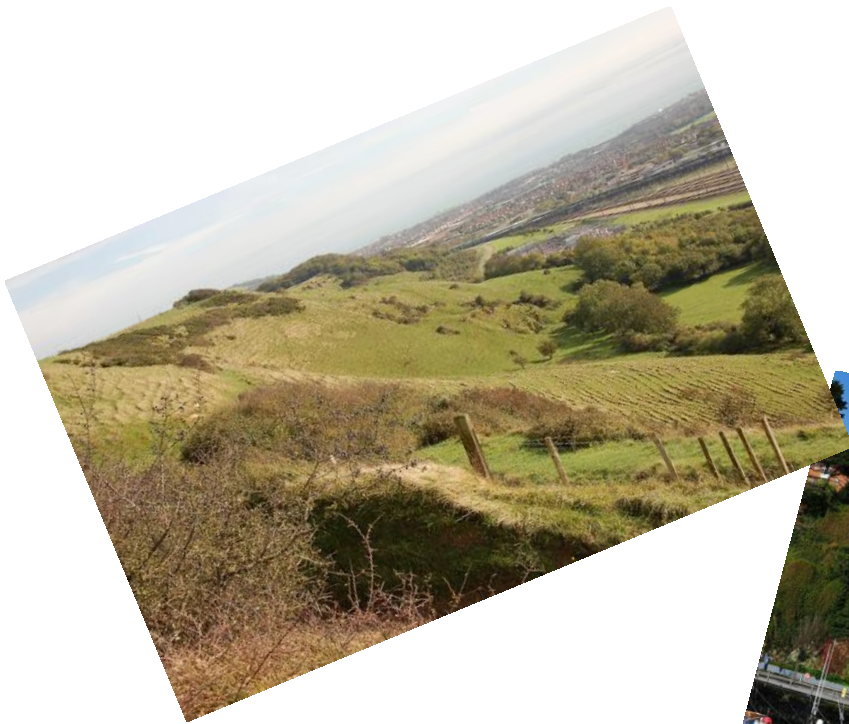
An Art Triennial event is hosted in Folkestone and brings visitors from all over the world. We have three theatres, a jazz club and lots of music venues. The Harbour Arm has been regenerated over the last two years and hosts many events.

Local schools range from good to outstanding and there is a choice of Secondary and Grammar schools.

The area ranges from a busy town to small villages, countryside and parks

Cheriton is a suburb of Folkestone situated between the M20 and the area leading to the sea towards the ancient Cinque port of Hythe

There is an army presence in Cheriton as the Gurkha Regiment is based here.



Appendix 1 2019

church	Baptisms	Weddings	Funerals/Memorial Services
Newington	1	2	In church 2
St Martin's	7	2	In church 4 At crematorium 4 Interment of ashes 5
All Souls	12	3	In church 3 At crematorium 5

Appendix 2 Finances 2019

Newington paid quota in full.

St Martin's paid quota in full

All Souls paid quota in full