



Mission Action Plan 2015-20: Mid-Point Review

What we can Celebrate

Forming Christ's Disciples	Tending God's People	Stewarding God's Treasure	Nurturing Time & Talents	New & Unexpected	New Possibilities
Small Group Growth	Inclusive, welcoming feel maintained	Financial Plan achieved	People are pulling together	Surge in progress on Moorings Scheme	Work with Sacred Heart & Salesians
Good Lent Courses	Ministry of Healing & Wholeness	Breaking Even	People are getting involved	Community Outreach	Night Shelter with RC/KLS
New People		Everyone Campaign Working	Child Involvement on First Sundays	Brexit	Refugee Work
Godly Play & Junior Church				Understanding & Forgiveness	Parish Mission: FaithWorks 18

Goals Not Acheived

Forming Christ's Disciples	Pursuing the Common Good	Nurturing Time & Talents
Not yet looked at time between 8.30am & 11am	Outreach in Battersea has generally not happened	Has the time & talents audit happened?
No weekday service for babies/toddlers		Communication issues remain
Number of small groups not grown		

What are the Reasons for This

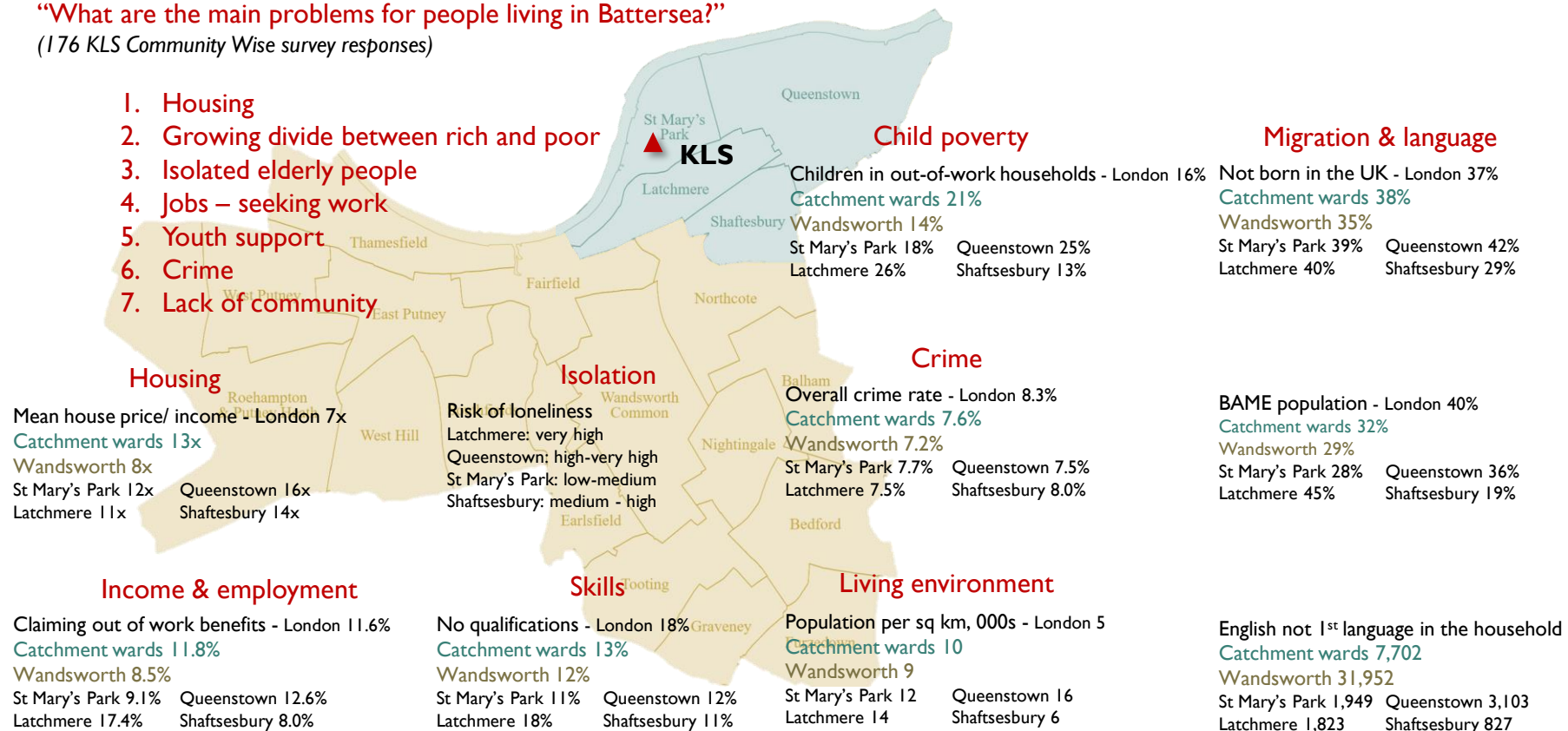
- ▶ Not necessarily developing people in terms of spirituality or gifting; the turnover/churn of people makes this difficult
- ▶ Staff numbers have dropped significantly and will – in the short term – continue to do so: we don't have the correct framework or structure of staff vs. volunteers
- ▶ Missing Communications Resources
- ▶ Work with KLS not sufficiently developed or visible
- ▶ What are the needs in Battersea?

Neighbourhood overview: KLS Survey Results

Key issues and challenges

“What are the main problems for people living in Battersea?”

(176 KLS Community Wise survey responses)



MAP Revision Suggestions

Shelve	Prioritise	New Goals	Resources Needed
Activity between 9.30 and 11: not enough vision/resource yet	Focus common good work with KLS, including refugees	Spiritual development for individuals & groups (especially short term)	Assistant Treasurer
Work with Westbridge Choir	Let's get moving on time & talent	Better use of social media	New lay and ordained ministers
Pastoral Care Network	Developing leaders (e.g. for small groups)	FaithWorks 18 with Sacred Heart	New signage
	Discipleship Conversations	New Ways of Giving: Card Reader Trial	Parish Manager
	Resolve Pew Replacement Question	Away Giving: A Focus Overseas Mission	

FaithWorks 18: Vision

Working alongside our Roman Catholic friends, FaithWorks 18 will be a 'season of mission' which aims to:

Launch a renewed commitment to St Mary's presence and activity in Battersea for the common good in the name of Jesus Christ

Give a chance for members of St Mary's to bring friends/guests to a variety of enjoyable events that will offer gentle opportunities to consider the life of faith in Jesus Christ; and

FaithWorks 18: Emerging Plan

Preparation Period: Advent 2017-July 2018



Mission Period: September 15th – November 25th 2018



Joining in: Sacred Heart Parish Mission: 7th – 14th October 2018

FaithWorks 18: Possible Events & Timetable

(not including services)

Event	Possible Date	'Target' Group
Coach Trip/Pilgrimage	Day in August 2018	Elders
Community Showcase	15 th September 2018 (to replace Fete?)	Local Community Organisations/Charities
Mini-Arts Festival	29 th – 30 th September 18	Arty-Types
Hymns & Pimm's	30 th September	Non-Churchgoers
Half-Term Holiday Club	22 nd – 26 th October 18	Children & Families
Armistice Day Centenary	Sunday 11 th November	Civic Leaders/Veterans etc
Question Time	Saturday 24 th November	Adults/Sceptics/Agnostics
Historical Lecture	To be confirmed	Those who love the Building/Battersea Society

FaithWorks 18: Preparation Period

Event	Possible Date	'Target' Group
Advent Workshop	Saturday 2 nd December 2017	Children (with Sacred Heart)
FaithWorks 18 Launch Service	Sunday 3 rd December 2017	Congregation
Sacred Heart Monthly Lectures	Through Early 2018	St Mary's & Sacred Heart
Christian Unity Week Service	Sunday 21 st January 18 (pm)	St Mary's & Sacred Heart
Ecumenical Study Groups on <i>The Joy of the Gospel</i>	Lent 18	St Mary's & Sacred Heart
London Martyrdom Pilgrimage	Saturday in Lent 18	St Mary's & Sacred Heart
Good Friday Workshop	Friday 30 th March (am)	Children (with Sacred Heart)
Possible Parish Weekend	May/June 2018 (tbc)	Congregation
Thy Kingdom Come (Prayer)	10 th – 20 th May 2018	St Mary's & Sacred Heart

Beyond FaithWorks 18: Follow Up & Possible Other Events

- ▶ Short Christian Basics Course in late 2018
- ▶ Alpha Course in January 2019
- ▶ Occasional Film Nights
- ▶ After-work dinner for businesspeople in Central London
- ▶ Reintroduction of Toddler Service
- ▶ Open Church (After Office Reorganisation)
- ▶ Pilgrimage to (perhaps) Italy

MAP Strategic Plan: Timeline

12

Year	Autumn 17	Spring 18	Summer 18	Autumn 18	Spring 19	Summer 19	Autumn 19	Spring 20	Summer 20
Forming Christ’s Disciples	Discipleship Conversations	Lent Course: <i>The Joy of the Gospel</i> Lent Prayer Focus	Relaunch Toddler Service	FaithWorks 18	Lent Course	Confirmation			
	1 st Sunday Band Post-Colin	Begin Godly Play	Website & Comms Review		Mens’ Retreat				
	Tending God’s People	St Mary’s Show & Fete	Pre-FaithWorks Audit	Parish Lunch x 2	Parish Lunch x 2	Parish Lunch x 2	Parish Lunch x 2	Parish Lunch x 2	Parish Lunch x 2
Parish Lunch x 2		Mardi Gras/Barn Dance	FaithWorks 18						
		Parish Lunch x 2							
Stewarding God’s Treasure	Everyone 18	Open ‘Front Office’	Moorings Tender	Everyone 19	<i>Moorings Open</i>	? Internal Redecoration	Everyone 20		PSF 2021 Offer
	Card Reader Trial	During 2018: Establish Budgeting Process	PSF 2019 Offer	<i>Moorings Build</i>	Tender for Internal Redecs	PSF 2020 Offer	? Internal Redecoration		
			New Office arrangements fully operational						
	Sage 50 Pews		Parish Manager Induction						
Nurturing Time & Talents	Vocational Sermon Focus in Advent	Pre-FaithWorks ‘Ministry Fair’: Connect People with Mission Roles	FaithWorks 18 Training	FaithWorks 18	Training for New Leaders				
Pursuing the Common Good	KLS Visit to PCC: Review	Away Giving: Identify Mission Agency/Project to Support	Bring forward proposals for long-term work with KLS	FaithWorks 18: Community Showcase	Work Arising out of KLS relationship & FaithWorks 18	Work Arising out of KLS relationship & FaithWorks 18	Work Arising out of KLS relationship & FaithWorks 18	Work Arising out of KLS relationship & FaithWorks 18	Work Arising out of KLS relationship & FaithWorks 18
	Refugee Work to Report to PCC								
FaithWorks 18	Planning	Preparation	Preparation	Mission Period Christian Basics	Alpha	Pilgrimage	MAP 2015-20 REVIEW	MAP 2020-25 PROCESS	MAP 2020-25 COMPLETE
	Launch Service	Sacred Heart Talks	Parish Weekend		City Dinner				
	Advent Kids	Lent Activities	Thy Kingdom Co						
Staffing	Appoint Parish Manager	Appoint Associate Vicar & Secretary	Associate Vicar in Post			? Curate			
		? PCC Treasurer							