

Parish of Sanderstead and Hamsey Green

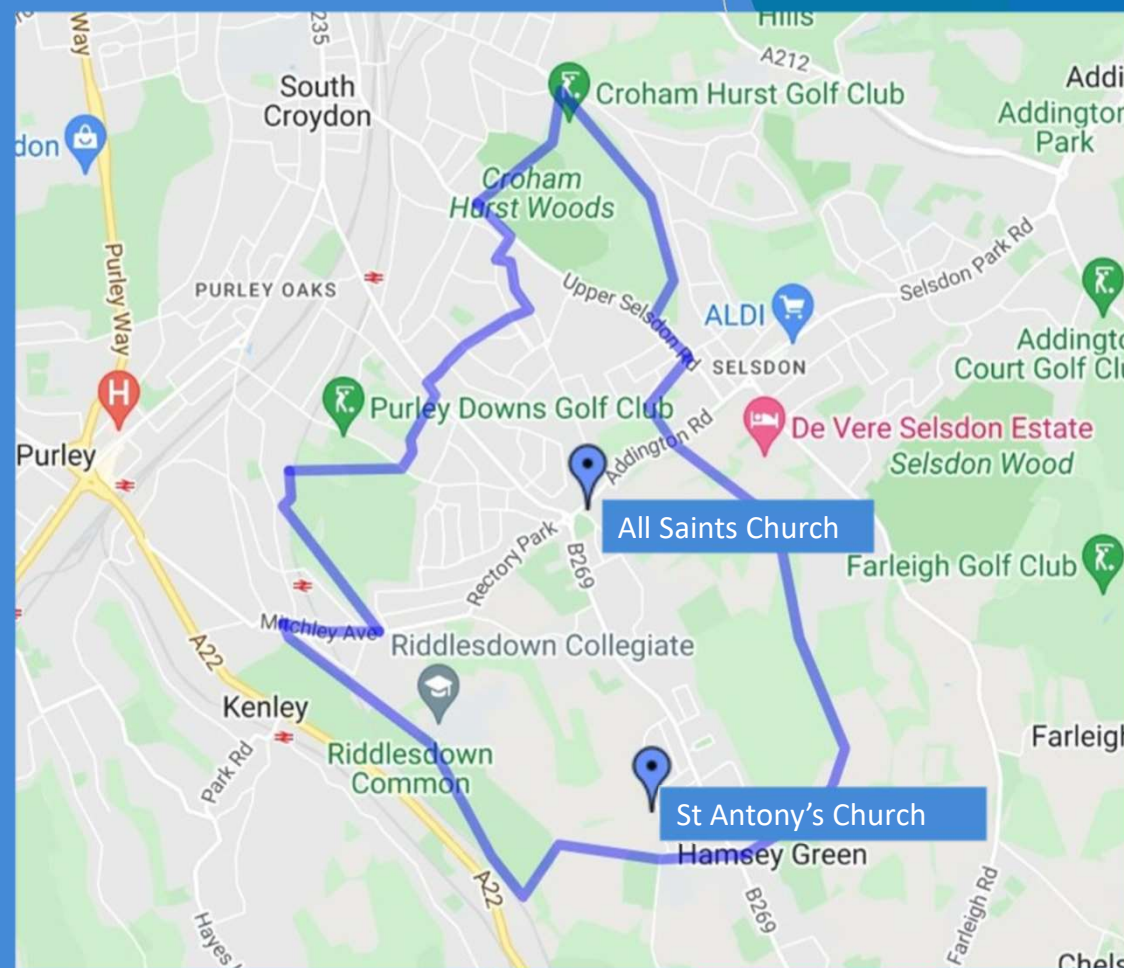
Parish Profile

Proclaiming Jesus, Changing Lives,
Serving our Community.





Parish of Sanderstead and Hamsey Green



Parish Office: Onslow Gardens, South Croydon CR2 9AB



Welcome

We want to extend God's welcome to all as we proclaim Jesus and serve our community.

People have been coming to All Saints church in Sanderstead for over 800 years to meet with God. Of course, over the years many things have changed, but one thing remains the same: at the heart of church life is Jesus Christ, God's Son, who gave his life by dying on the cross so that all might be forgiven and enjoy eternal life.

This good news is for everyone without exception.

Our Church and Our People

There has been a church on the site of All Saints, Sanderstead, since at least 1230AD worshipping God and serving the community. History books indicate that there has been a church on the site since the time of the Domesday Book.

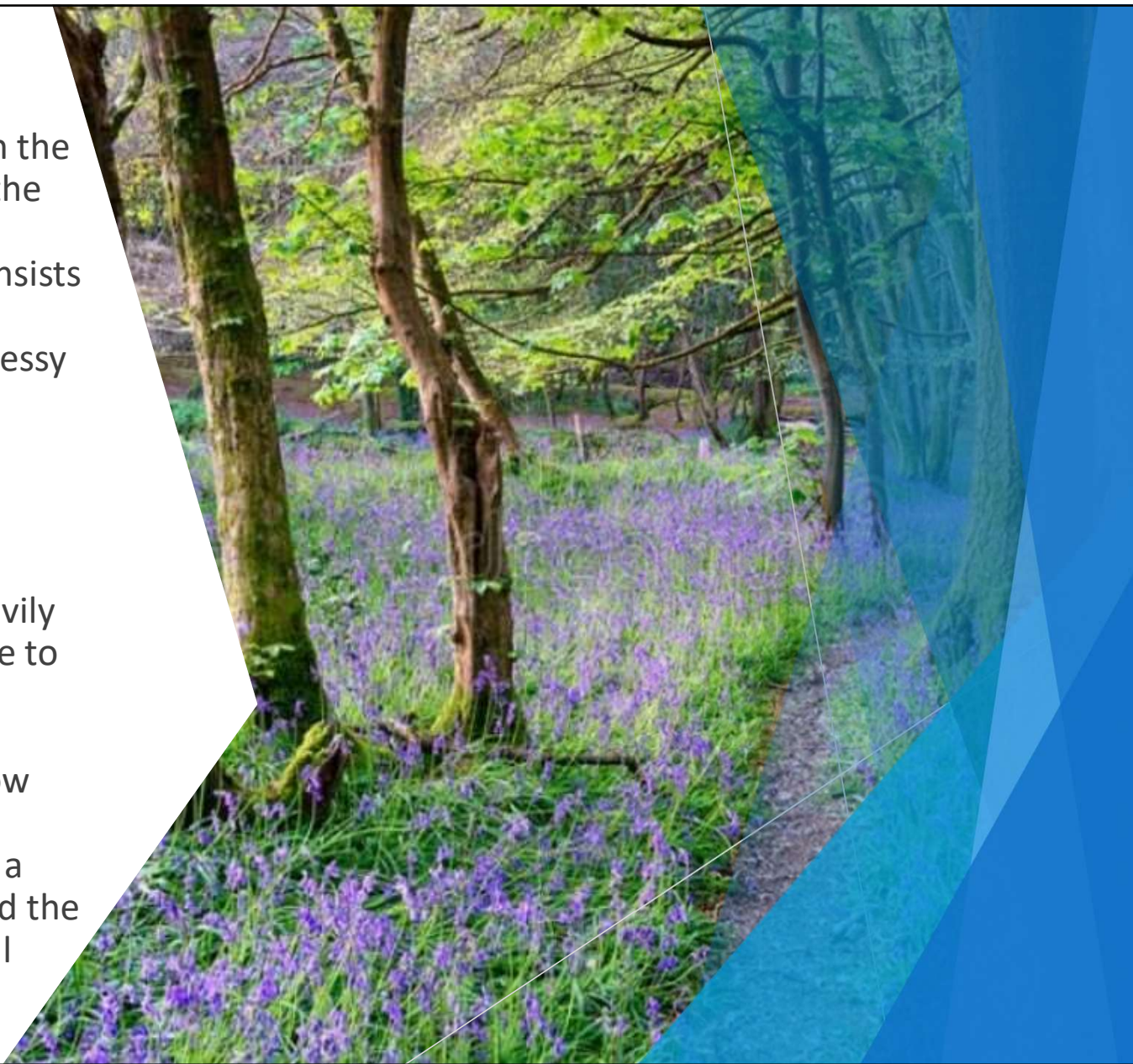
Our present congregation seeks to continue this faithful witness to the Gospel, and to share in God's mission in this part of South Croydon.

Following a re-organisation of parish boundaries and the disbanding of the former team ministry, the parish currently has a Priest-in-Charge, Rector Designate (post vacant); a non-stipendiary assistant priest and a pastoral coordinator, all based at All Saints. There are two administration assistants, both employed part-time, one of which manages the hall bookings.



The vast majority of church members live within the parish. There are 184 people on the electoral roll, although not everybody on the electoral roll attends church due to age or infirmity. The 'attending congregation' consists mostly of people in the 60+ age range. However, a monthly, Sunday afternoon 'Messy Church' service attracts a good number of young families.

As of 2020, the average age of people in Sanderstead was 41. Local schools are heavily over-subscribed as young families continue to move to the area. However, the church members realise that they are an aging population and that, if the church is to grow and flourish, it must attract and welcome young families. In 2018 the church agreed a strategic focus on children and families and the needs of this group is at the forefront of all decisions and activities





St Anthony's is a hall church in Hamsey Green and it is the only church in the area. The building is used as a community resource during the week and converts into a church when services are to be held.



The diocese is committed to appointing and accommodating a pioneer minister to develop the ministry here. Torchlight Ministries currently rents the premises for their services.

Is God calling YOU to be our new Priest-in-Charge (Rector Designate)?

The primary responsibility of the Priest-in-Charge (Rector Designate) is to be the parish priest.

We are looking for A LEADER who, with ENERGY and DYNAMISM, will develop the vision for the church to enable the CHILDREN and FAMILIES work to be a priority in order to GROW the church both in numbers and spiritual maturity. In addition, the new person will CARE and TEND for the existing aging congregation many of whom have faithfully served the church for many years.



We are praying that God will find us

A confident, spirit-filled, prayerful,
mission-minded leader with:

- ▶ strong communication skills, the ability to engage and encourage people across the age ranges and to convey the church's mission, vision and priorities;
- ▶ a commitment to preach the Word of God in thoughtful and stimulating ways;
- ▶ an energy and dynamism - probably more extrovert than introvert;



We are praying that God will find us someone who has

- ▶ a pastoral heart, showing empathy and good listening skills,
- ▶ a willingness to empower, encourage and work collaboratively with lay leaders across a wide spectrum of activities in the church community;
- ▶ an ability to build relationships both within the church, in the local community and between local churches in Sanderstead;
- ▶ the ability, willingness and experience to help us to develop and enjoy a variety of worship styles, including a wider range of musical worship and a deeper corporate prayer life - whilst recognising and valuing our heritage;
- ▶ good, proven, organisational skills - if possible, with some experience of working in the secular world;



What we can offer



- ▶ a long heritage of faith and commitment; many in our congregation are “seniors” which, although it does not necessarily match the demography of the wider Sanderstead community, means that faith and tradition have deep roots in our church;
- ▶ a warm, loving, caring, prayerful, supportive and accommodating congregation that does not demand a great deal of choreography but enjoys traditional liturgy and is gradually exploring new styles of musical worship;
- ▶ a church based on a sound financial footing, with a generous congregation;
- ▶ a willingness to grow spiritually, to pray together, to meet and learn together in home groups;
- ▶ a fine, well maintained, spacious family-sized rectory.



Where we are now, as a worshipping community ...

- ▶ We are a church that is spiritually alive and awake to the mission that God has set before us.
- ▶ We have a deep love for God's Word and a desire to proclaim it.
- ▶ We are a warm and caring fellowship that genuinely wants someone to lead God's mission here to the next level.



Our Parish



The Parish of Sanderstead lies on the northern edge of the beautiful North Downs and forms part of the southern boundary of the Greater London Borough of Croydon. It is essentially a quiet suburban parish, approximately three miles due south of Croydon Town Centre. In 2020 the population was estimated to be 15,489 .

There have been ongoing changes in local housing stock as developers seek opportunities to replace larger family homes with blocks of flats and town houses or care accommodation for the elderly. This can be a source of disquiet amongst local residents; however, the Croydon Local Plan states that a further 885 homes need to be built in Sanderstead before 2039.



The area is, popular with established families who enjoy its amenities and pleasant atmosphere.

The attractions of living in the area include;

- * accessibility to open spaces and woodland
- * good local Nursery and Outstanding Primary and Secondary Schools
- * good local shops including Waitrose, Sainsbury & Tesco; larger shopping centres are available in Croydon, Sutton and Bromley
- * good local bus services, access to Croydon's Tramlink and fast rail links from three local stations via East Croydon to London, and south towards Gatwick Airport, Brighton and the coast.
- * a London Overground link from West Croydon to East London.
- * Access to the M25
- * many opportunities for sport and recreation

Accommodation and Stipend

The Rectory is a good size 1950s built 4 bedroom detached house with a garden in a quiet local road. It would make a good home for a family with children, and it is near to good primary and secondary schools.

The garage has been converted to provide comfortable office space. The house was purchased by the diocese in July 2016 to replace a larger building that required much work.

The stipend is in accordance with the diocesan scale for incumbents and includes National Insurance and pension. Expenses will be paid in full in accordance with diocesan guidelines and practice.





All Saints Church Building

All Saints' Church occupies a landmark location at the top of Sanderstead Hill with commanding views over London. The church is a Grade 1 listed building. It has been extended four times in its history, the latest being in 1981, when a large side chapel was built. This makes for a surprisingly large interior, which can be challenging liturgically, as many of the sightlines are difficult, though providing interesting separate spaces for smaller services and activities. However, the sightlines problem has largely been overcome by screens, and a technical team to provide online live-streaming of services.



The fabric of the church is in fair condition for its age, having had several major works completed in recent years e.g., the roof, stonework, the Lychgate and War Memorial. The last quinquennial review was carried out in June 2018. Urgent building matters arising from the review have been dealt with, however decoration of the interior of the church is still a matter for further discussion.

The diocese is aware of our desire to reorder the interior of the building. We replaced uncomfortable pews in the North side of the church three years ago, but it remains our intention to complete the reordering project by replacing the remaining pews (which only date to around 1920) with more comfortable seating as soon as we can.



All Saints church halls were built in the 1950s. The building includes meeting rooms and offices, one of which is occupied by 'Sanderstead Neighbourhood Care', a local charity.

A full-time caretaker/groundsman and a part-time caretaker/ keyholder are employed to clean and oversee the day to day running of the halls and grounds.



The halls connect to two flats, owned by the PCC. The upper flat is currently rented by one of the caretakers but soundproofing issues have made it difficult to rent the lower flat as well. The PCC also owns a three-bedroom house between Sanderstead and Hamsey Green (just over one mile distance from the Church).

The Diocese of Southwark

Southwark is a diverse and vibrant Diocese, founded in 1905, covering South London and East Surrey. It serves the 2.8 million people in the 16 local authorities of South London and East Surrey through 356 places of worship, 293 parishes, and 106 church schools. The Diocese is divided into three Episcopal Areas – Croydon, Kingston, and Woolwich – each with an Area Bishop, two Archdeacons, and a team of clergy and laity who carry out various roles relating to vocations, minority ethnic concerns, women's ministry, social justice, mission, ministerial training, as well as a range of lay ministries.

Southwark Cathedral is on the River Thames near London Bridge and Shakespeare's Globe Theatre.

The Southwark Vision is founded on mutual commitment, speaking well of one another and walking together in the pilgrimage of faith. Supporting, encouraging, and resourcing each other in our common task, we seek to be a Diocese that is:

- ▶ *walking* with Jesus and getting to know Him better as we journey on
- ▶ *welcoming* all, embracing our diversity and seeking new ways of being Church
- ▶ *growing* in numbers, generosity, faith and discipleship as we grow God's Kingdom.

Our parish is supported well by our Archdeacon.

All Saints and Our Community

Local Schools: We have continued to enjoy good relationships with our local primary schools, following the departure of our Children and Families Pastor. Prior to the pandemic, we were able to go into schools for assemblies and to provide resources. Some of that work has continued online during the pandemic and we will need to be ready to re-establish the 'in person' work as we go forward. Classes from our schools continue to visit our church building and local schools use our church for their Christmas services.

We have also developed a good working relationship with our local secondary school, offering 'listening support' for its staff. This developed further during the pandemic, and we have trained a larger group of listeners in order to establish 'listening' support for students as well as staff.

Ridgeway
Primary
School
& Nursery





Children and Families

We welcome children to all our services. Children are also welcome to explore the children's corner at All Saints, with books, toys and crafts.

Family Worship services are held on the 2nd and 4th Sundays of the month. Children of all ages are welcome. Toddler groups are open on Tuesdays and Fridays at 9.30am. Messy Church is usually on the third Sunday of the month at 3.30 pm. There are also Messy Easter and Messy Christmas events.

Services in church will continue to be live streamed, and there will be videos available on our [YouTube channel](#) and [Facebook page](#).

- ▶ **Parent and Toddler groups** (twice, weekly): The groups are very popular with parents/ carers and can attract up to 50 toddlers/ babies per session. A rota of volunteers facilitate the groups and activities.
- ▶ **Jigsaw activities** (in church, Sunday Mornings): Activities are available for children.
- ▶ **Messy Church** (Monthly, Sunday afternoons) there is a growing link between the Toddler groups and the Messy Church sessions. There are also Messy Easter and Messy Christmas events.





- ▶ **Uniformed Organisations:** Rainbows, and Brownies meet in the church halls. Beavers, Cubs and Scouts meet nearby. Uniformed organisations attend key services during the year.
- ▶ **Holiday Club for Children:** This takes place in the church halls during the last week of the school summer holidays.



- ▶ **Elderly care:** There are a growing number of care and residential homes in the parish. Prior to the pandemic, All Saints had a link with Langley Oaks Care Centre, which serves people with dementia.
- ▶ **'Staycation'** for the elderly: A week of activities in the church and halls for older people during the summer period.
- ▶ **Coffee Pot:** Fortnightly coffee/tea and cake mornings. All are welcome, but this is mostly attended by the elderly.
- ▶ **Sunday Lunch:** (monthly) Organised by All Saints alongside Sanderstead Neighbourhood Care for the over 65s and held in the church halls.





- ▶ **Home Groups:** fortnightly bible study and mutual support groups
- ▶ **The Mothers' Union** meets monthly: a prayerful group that participates fully in the life of the church and outreach into the community. It has prepared and run this year's Mothering Sunday worship, organised the Ecumenical World day of Prayer and at Christmas distributed more than 200 Christmas Angels to children and parents of the Toddler Group, Christingle and Carol services.
- ▶ **Craft Group- adults** (monthly): Meets in the small hall. Open to all.
- ▶ **'Can we pray for you?' offer for all.**
- ▶ **Two teams of Handbell Ringers are based at All Saints.** Both teams of bell ringers use four octaves of American Handbells and a two octave set of hand chimes. They practice regularly in All Saints' Church and they give performances locally at a variety of venues.

Walking group and social activities for all, organised by the Men's Group

The church has a stall at local events in order to meet the community and share activities.

*** Sanderstead Community Day at Sanderstead Recreation Ground**

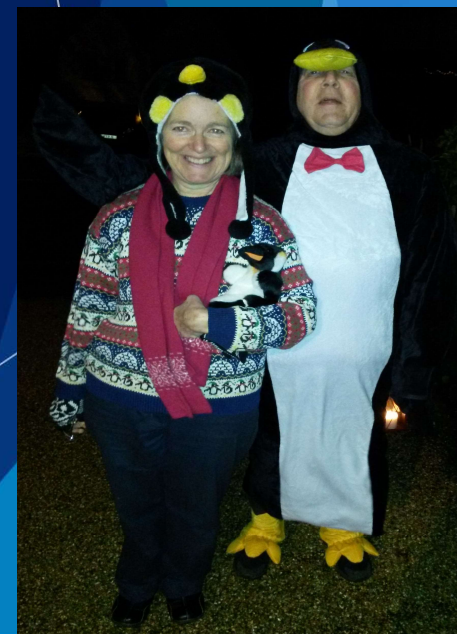
*** The Gruffy Fayre – Run by the local scouts group**

Many of the congregation at All Saints are actively and quietly involved in their own personal ministry outside the church in numerous and various charitable, uniformed and other support groups.





ADVENTure activities during Advent



Churches together in Sanderstead

We are pleased to be working with Sanderstead URC, Sanderstead Methodists and the Holy Family RC church.

During COVID, **Churches Together in Sanderstead** fell into abeyance, but we are taking steps to build it up again. Events such as “School of the Spirit”, Week of Prayer for Christian Unity and Christmas Carols on the Gruffy have in the past been well supported. We have revived our joint activities this Easter with a “Walk of Witness” together that was attended by more than 50 people.



- ▶ The Parochial Church Council meets six times a year on average, with working groups taking forward detailed work in various fields of the church's ministry and mission. The PCC is responsible for the day-to-day running of the churches, including for buildings and finance and expenditure. It is also responsible for parish policy and vision and meets about six times a year on average. It has no funds of its own.
- ▶ **Mission links:** The parish regularly supports the work of local, national and international charities such as CMS, USPG, Christian Aid, The Children's Society, CRISIS, The Croydon Refugee Centre, The Tanzania Development Trust, Sugandh and the Croydon Zimbabwe Link.



Pattern of Worship

All Saints

► First Sunday

9.30 am Holy Communion with choir

► Second Sunday

9.30 am Family Worship followed by Holy Communion

► Third Sunday

9.30 am Holy Communion with choir

► Fourth Sunday

9.30 am Family Worship followed by Holy Communion

► Fifth Sunday

9.30 am A chance for creative worship

Prayer Meeting

Last Saturday at 9 am

Midweek Communion

12.30 pm on the third Thursday each month



Parish Policies

Christian Initiation (Baptism and Confirmation)

All enquirers for baptism are invited to attend a baptism preparation class which is held every six weeks in the church. This is an opportunity to get to know the families, talk to them in some depth about what baptism is all about and undertake a formal application process. They are offered a welcome 'Thanksgiving for the Birth of a Child'. However, almost all applicants appear happy to go straight to baptism. Preparation is tailored to the needs of specific couples. The baptism policy is thus 'open' but done as a serious process.

Children are admitted to Holy Communion after preparation from aged seven years with a view to Confirmation in the mid-teenage years. Alpha & Emmaus have been used over the years in preparation. Confirmation services are held on a Deanery basis.





Marriage

We welcome those who wish to marry in the church, including divorcees, subject to normal rules about living in the parish or having an appropriate link with the parish.

Safeguarding

The churches follow the National and Diocesan legal and procedural framework for safeguarding children and vulnerable adults

Life Events, Rites and Celebrations

Due to the pandemic, these figures are not typical of the number of services usually held.

Average number per annum over the last three years of:

- Weddings: 3-6
- Funerals: 20
- Baptisms: All Saints' 8-15
- Confirmation Candidates: 1-3
- Regular 'home' Communions: 12

Finance

❖ Please see separate financial statement.

The last two years of the pandemic have not been typical years.

In a typical year we would expect to see :

- Full parish share being met (currently £82,000 approx)
- Expenditure in the region of £250,000 excluding major projects
- Income of similar amount represented by :-
 - Committed giving £90,000
 - Lettings £115,000
 - Gift aid £20,000
 - Investment income and other donations and legacies £25,000

The Parish of Sanderstead and Hamsey Green - Year to 31 December 2021

RECEIPTS / INCOME	Unrestricted	Restricted	PAYMENTS / EXPENDITURE	Unrestricted	Restricted
Voluntary Giving			Fundraising costs	52	0
Planned giving	92,849		Church Activities		
Collections	1,184		Mission giving & donations	6,950	
Sundry donations, appeals etc	15,079	50	Diocesan quota	75,000	
Gift Aid	22,960		Staff costs	23,386	
Legacies received	1,000		Clergy & staff expenses	4,529	
Grants	7,770	455	Children & Families Pastor	25,077	
Total voluntary Giving	140,842	505	Organists, choir & music	7,473	
			Total Church Activities	142,415	0
Activities for Generating Funds			Church Expenses		
Bookstall	252		Church running expenses	11,559	
Property & hall lettings	84,177		Halls running expenses	47,174	
Parish fees	7,516	3,489	Church maintenance	14,765	
	91,945	3,489	Other property maintenance	11,327	
			Upkeep of churchyards	60	18,853
Income from investments	15,482	1,226	Office costs	5,825	
			Professional fees	5,085	4,560
Other income	335		Sundries	11,604	2
			Total Church Expenses	107,399	23,415
TOTAL INCOME	248,604	5,220	TOTAL EXPENDITURE	249,866	23,415

The Parish of Sanderstead and Hamsey Green

Statement of Financial Activities For the Year Ended 31 December 2021

	Note	Unrestricted funds 2021 £	Restricted funds 2021 £	Endowment funds 2021 £	Total funds 2021 £	Total funds 2020 £
Incoming & endowments	3					
Donations & legacies	3.1	140,842	505	-	141,347	139,206
Charitable activities	3.2	91,945	3,489	-	95,434	105,071
Other trading activities	3.3	-	-	-	-	-
Investments	3.4	15,482	1,226	-	16,708	17,886
Other income	3.5	335	-	-	335	7,285
Total income & endowments		248,604	5,220	-	253,824	269,448
Expenditure	4					
Fundraising costs	4.1	52	-	-	52	-
Charitable activities	4.2	249,814	23,415	-	273,229	268,180
Total expenditure		249,866	23,415	-	273,281	268,180
Net (expenditure)/income before investment gains		(1,262)	(18,195)	-	(19,457)	1,268
Transfers between funds		1,385	(1,385)	-	-	-
Net gains and /(losses) on investments	10	42,144	6,304	3,380	51,828	(11,540)
Net (expenditure)/income net movement of funds		42,267	(13,276)	3,380	32,371	(10,272)
Reconciliation of funds						
Total funds brought forward	14	1,231,646	42,333	23,516	1,297,495	1,307,767
Total funds carried forward		1,273,913	29,057	26,896	1,329,866	1,297,495



The parish contributes through the Parish Support Fund.

Numbers on Electoral Roll 184

Average Number of Sunday Communicants 65





► “We are praying for the right person to be called to be our Priest-in-Charge (Rector Designate).

Our prayer is that God will guide you and us in this decision.”

Some useful links for more information

Sanderstead Parish <https://sanderstead-parish.org.uk/>

Diocese of Southwark <http://www.southwark.anglican.org/>

Sanderstead Residents Association: <http://www.sanderstead-residents.co.uk>

London Borough of Croydon <http://www.croydon.gov.uk/>

Croydon Local Plan [croydon-local-plan-2018-revised-2021-part-1-start-to-section-11.pdf](#)

Gresham Primary School webfronter.com/croydon/Gresham

Atwood Primary School <https://www.atwoodprimary.academy/>

Riddlesdown Collegiate www.riddlesdown.org

Sanderstead WI www.sandersteadwi.btck.co.uk

Sanderstead Village WI <https://www.sandersteadvillagewi.co.uk/>

Sanderstead Townswomen's Guild <https://www.the-tg.com/Guild/sanderstead-afternoon/375.aspx>

Sanderstead Cricket Club <https://sanderstead.play-cricket.com/>

Croydon South Rotary Club www.croydonsouthrotary.co.uk

Torchlight Ministries <https://torchlightministries.com/>