

**Welcome to the United Benefice of
Slyne with Hest - St. Luke,
Halton on Lune - St. Wilfrid
& Aughton - St. Saviour.**



St Luke's.



St Saviour's.



St Wilfrid's.

The Bishop of Blackburn

The Rt Revd Julian T Henderson

Dear potential applicant,

Ministry in the Diocese of Blackburn

Thank you for your enquiry about a vacant post in the Diocese of Blackburn, the Church of England in Lancashire. We believe God wants His Church to grow, and so are looking for gifted and prayerful clergy with a heart for the Gospel and mission, who have the energy and enthusiasm to implement Vision 2026, *Healthy Churches Transforming Communities*. You can read more about Vision 2026 overleaf.

Almost all of our parishes have Vision Champions who have volunteered to work with their clergy and lay leadership in keeping the Vision on the PCC and congregation's agenda. The Vision is about a radical change of culture, in which we engage in new ways in making the unchanging Gospel of Jesus known in our communities.



The spiritual, physical and emotional health and the ongoing development of our clergy is very important to us.

Please be assured of my prayers as you consider whether to make an application.

+ Julian

Bishop of Blackburn

Living in Lancashire

Lancashire people are known for their warmth and friendliness and those who are new to the area find it to be an easy place to make friends. There are excellent transport connections and the surrounding countryside is spectacularly beautiful. For those with children, the Diocese has over 180 church schools including 10 high schools; the vast majority are rated as Good or Outstanding.



Canon Fleur Green
Advisor for Women's
Ministry

Our call to Mission

As a Diocese we are fully committed to the breadth and diversity of the Anglican tradition. Traditionalist, evangelical, catholic, progressive, Eucharistic, charismatic – we don't care what the label is. As long as you are passionate about sharing the Good News of Jesus Christ and long to make new disciples, there is a place for you in the Church of England in Lancashire.



+ Philip North
Bishop of Burnley

If you come to Blackburn Diocese we will look after you...

- We have a great property department, who will do their best to ensure your house works for you and your family and is well maintained.
- We encourage all clergy to take their full annual leave entitlement, and also to use creatively the overtime we all put in to take an extra day off once each month, to enable you to have a midweek 'weekend' away.



We have a beautiful diocesan retreat house in the grounds of a ruined Cistercian abbey, where clergy are welcome to have personal reading days without charge (bring your own lunch).

Whalley Abbey Retreat and Conference Centre

- We encourage all parishes in vacancy to consider how they will 'pastor' and support their new priest.
- We have a unique pattern of peer-led Ministerial Development Review, designed by the clergy for the clergy.
- We are setting up a pilot reflective practice group for clergy new in post, in partnership with St Luke's Healthcare.
- If you are looking for a spiritual director or a mentor we have networks of people with whom we can put you in touch.
- We are always looking for ways for clergy to mix apart from work – including reading weeks, regular hospitality, and a clergy walking group. Further suggestions are welcome.

Bishop Philip leads a clergy walk



The year 2026 marks the centenary of the formation of the Diocese of Blackburn. In the ten years leading up to our centenary, Vision 2026 is a plan to turn around the long-term trend of gradually declining attendance. Our vision is for the growth of God's kingdom, not just of his church. Our vision is to develop healthy churches which transform their communities, a vision in which making disciples for Jesus Christ and pursuing social justice sit side by side.

Our vision has had a long gestation. When the Vacancy in See occurred in 2012 we began to look at how we were going to move forward as a diocese. On his arrival, Bishop Julian spent his first year visiting every member of the clergy in their homes and visiting all the parishes of the diocese. At the end of that first year, Bishop Julian shared his reflections and the vision began to become clearer. It was shared with the diocesan family in the deaneries and in a number of local events and unanimously adopted by the diocesan synod.

The first year was spent in prayer with the Vision 2026 as the focus. 2016 has seen the Vision develop, with parishes nominating Vision Champions who were commissioned in Preston Guild Hall along with Churchwardens in the presence of 1,600 people. As a diocese with our Vision, we are willing to face the cost of change; and in prayer we see the grace and power of God which can alone bring renewal and growth. We are committed to work together (clergy, laity, church schools, diocesan staff and the cathedral) to deliver Vision 2026 by:

Making disciples of Jesus Christ

- Knowing the Scriptures better through reading, teaching, preaching and study
- Praying with greater depth and urgency for the Kingdom of God to come
- Giving generously of our time, talents and money to the cause of Christ

Being witnesses to Jesus Christ

- Sharing the Gospel of salvation with confidence
- Holding regular enquirers courses in as many local churches as possible
- Showing God's love in action through projects that meet a local human need
- Offering thorough and accessible Baptism preparation and follow-up
- Planting or renewing 50 new strategic congregations by 2026

Growing leaders for Jesus Christ

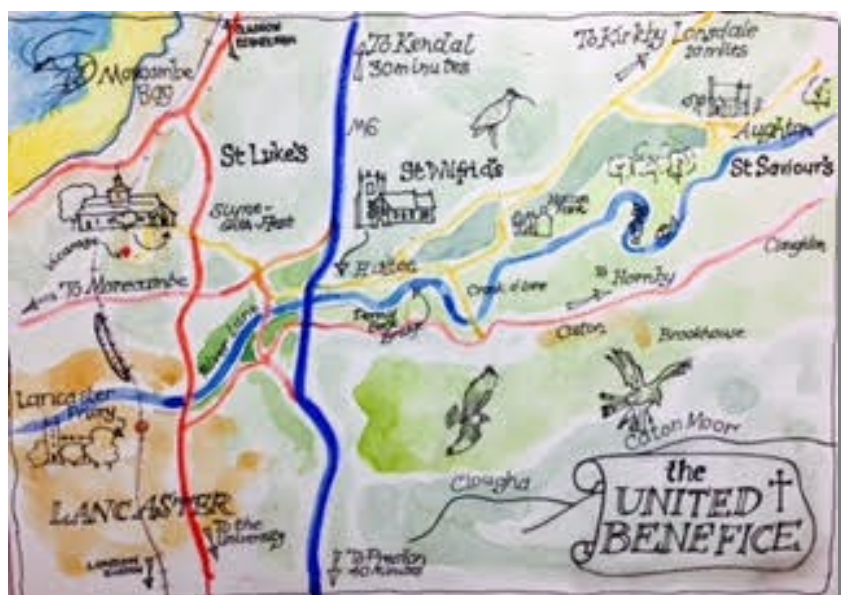
- Supporting and equipping the current leadership for today's context
- Enabling missional leadership in every Christian community
- Liberating lay leadership for greater participation
- Creating the varied patterns of Sunday and weekday worship necessary to welcome all kinds of people, especially the newcomer
- Prioritising work among children, young people and schools to raise up a new generation for Christ

The Diocesan Vision Prayer:

Heavenly Father, we embrace Your call for us to make disciples, to be witnesses and to grow leaders. Give us the eyes to see Your vision, ears to hear the prompting of Your Spirit and courage to follow in the footsteps of your Son, our Lord and Saviour Jesus Christ. Amen

Contents

Introduction to the Benefice and Area	5 - 6
Our Buildings	7 - 10
Our Parishes	11 - 14
Our Schools	15 - 17
Current Patterns of Worship	18
Activities connected with Churches	19
Demographics	20
Statistics	21 - 22
The Vicarage	23 - 25
Person Specification	26
What we can offer you	27



(Sketch map by Hilary Carr – Church Warden at St Saviour's)

The three churches are situated just to the north of the historic university city of Lancaster and are encompassed by the beautiful areas of the Lake District, Yorkshire Dales, Lune Valley and Morecambe Bay.

Introduction to the Benefice

The three parishes are sited in the Deanery of Tunstall, the Archdeaconry of Lancaster and the Diocese of Blackburn.

There are excellent communication links;

- close to J34 of the M6
- the railway station in Lancaster, with journey times of about one hour to Manchester and just over 2 hours to London, Glasgow and Edinburgh.
- good bus links to Morecambe, Lancaster, Preston and north to the Lake District.



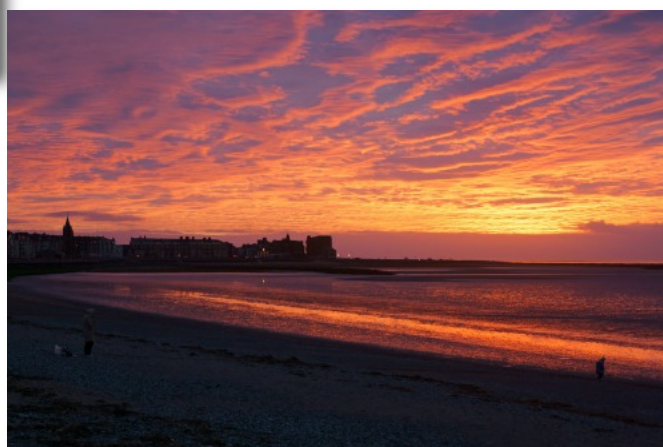
The historic city of Lancaster has a teaching hospital and two universities – Lancaster University (ranked 6th in the country) and the University of Cumbria, which focuses on professional degrees.

Several cinemas and theatres are to be found within the bustling city centre, which includes the St Nicholas Arcade Shopping Centre.



Cycle routes are many and various and the Sustrans Cycle Route 'Way of the Roses' from Morecambe to Bridlington, passes Aughton church.

There is easy access to Morecambe & photo opportunities with Eric!



One of the many fantastic sunsets over Morecambe Bay close to the parish.

The magnificent Lake District is within easy reach, with opportunities to explore the scenery and the many diverse activities available there. Closer to home we have the beautiful Lune Valley and the Trough of Bowland.



There are excellent schools in the area including primary schools attached to both St Luke's and St Wilfrid's. (see individual parishes). Many secondary schools have been graded 'outstanding' by Ofsted, including Ripley St Thomas CE School in Lancaster, Queen Elizabeth School in Kirkby Lonsdale, Lancaster Royal Grammar School for Boys and Lancaster Girls Grammar School.

Our Buildings

Slyne with Hest, St Luke's.



Built in 1898 the church began serving the Bolton-Le-Sands parish in 1900.

Independence came in 1934 when Slyne with Hest became a separate parish within the Diocese of Blackburn. The church is in the centre of the village, surrounded by beautiful grounds which include a

small Garden of Remembrance.

Fixed pew seating can accommodate about 170 and we have a good sound system. Disabled toilet facilities are within the Vestry Meeting Room at the rear of the church, while the Vicar's Vestry is off the Chancel.



For 12 years we have shared our church and church hall with the *St Luke's School Leavers Service - July 2017.*

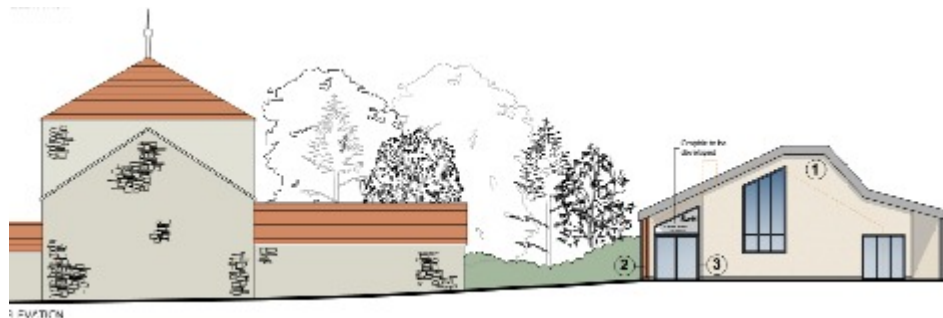
local United Reformed Church congregation. A few years ago, they were left a substantial monetary bequest and we are delighted that a newly formed Trust will oversee the building and running of a new Church Hall, which is imminent. The new hall will provide kitchen and café facilities, meeting rooms and a spacious function hall. After a few uncertain years, we are all looking forward to the opportunities for mission, outreach and fellowship which the building will provide.

St Luke's Church Hall

Plans have been submitted to Lancaster City Council for a new hall, our existing one has not been fit for purpose for many years.



We are a Fair Trade Church & also hold monthly stalls in the hall selling Fair Trade goods.



Architects plans for the new hall - exciting times!

Links for detailed plans.

<http://www.stlukes-slynewithhest.co.uk/1961-11%20P4.pdf>

<http://www.stlukes-slynewithhest.co.uk/1961-13%20P2.pdf>



If the plans for the hall are passed, it is anticipated that the building work will be completed by October 2018.

We have many exciting ideas for it's use.



St Wilfrid's, Halton on Lune.



(Display of wedding and baptism gowns to raise funds for the church roof 2017)

For over a thousand years there has been a place of Christian worship on the site occupied by the present church. Relics of Saxon crosses can be found in the tower and a cross bearing the Norse legend of Sugurd on one side and the death and resurrection of Jesus on the other can be seen in the churchyard. The present building dates from 1876 and was designed by Lancaster architects Austin and Paley.

Holy Communion (8am) is administered in the Lady Chapel.

The church can seat about 200 people. It has a highly regarded organ, beautiful stained-glass windows, four fine frescoes and a sound system.

A meeting room within the body of the church, built in 2008, is a remarkably versatile space, with a small kitchen - it is used for Junior Church, PCC meetings and serving refreshments.

A legacy enables enthusiastic volunteers to maintain the large Garden of Remembrance.

https://en.wikipedia.org/wiki/St_Wilfrid's_Church,_Halton-on-Lune

St Saviour's, Aughton (pronounced Afton)



The church was built in 1864 by architect E.G. Paley of Lancaster, it replaced a previous wooden church which was destroyed by fire. It has a centre aisle with a small vestry off the chancel, a single bell is rung from the aisle.

The church has fixed pews which can accommodate up

to 100 people. It has a small working organ, electric heating, but no running water. The churchyard is open for burials and ashes. Areas are left to grow as part of the wildlife management for the grounds.

A spectacular view over the breadth of

the Lune Valley meets you when leaving via the main door.



Church activities are usually held in the village hall a short distance across the road.

Pet
Service
2017



Our Parishes - Slyne with Hest



The parish of Slyne with Hest is the joining of the villages of Slyne and Hest Bank. The Lancaster Canal runs through the village, which has a dispensing pharmacy, two hairdresser's, a

beauty salon, private dentist, three public houses serving food, a cafe on the shore and the Post Office is situated within the local village shop.

Situated about a hundred yards along the lane from church is St Luke's CE Primary School. We have very strong links with them and a good working relationship with the supportive Christian head teacher.

<http://www.slyne-with-hest.org.uk/>

The parish has a strong community with thriving tennis, table tennis, football and bowling clubs. The Memorial Hall hosts many local groups for activities of all ages, including a nursery.

St John's Hospice is located in the parish and there are opportunities to become involved.



St John's Hospice is a local charity which provides free palliative care to patients with life shortening conditions. Our services cover a population area of 250,000 people in North Lancashire, South Lakes and parts of North Yorkshire. We have been caring for our community every minute of every day since 1986.

<http://www.sjhospice.org.uk/>

Our Parishes - Halton on Lune



Halton is blessed to be surrounded by the beautiful countryside of the Lune Valley. The village has a population of around 2500 and has three new areas of housing planned.

The village has many good facilities which include a post office,

doctors' surgery, pharmacy, village store, newsagent, family butcher, cafés, public house and an award-winning chippy!

The Centre@Halton is a Community facility which offers many activities ranging from a memory café, baby and toddler groups to Pilates, 5-a-side football and coffee shop.

Recently renovated outdoor play areas for children of all ages include a skate board park and football field.



<http://www.haltoncentre.org/>

Allotments next to the football field are very much in demand.

Our Church of England Primary School, St. Wilfrid's is situated in the middle of the village and St Wilfrid's Nursing Home is close to the Church.

<https://en.wikipedia.org/wiki/Halton-with-Aughton>



Halton Mill is owned by the award winning Lancaster Cohousing, a new development of 41 Passivhaus eco homes next door to the

Mill. Many of the residents, who are committed to sustainable and neighbourly living, work out of the Mill.



The Mill Vision

To create a vibrant and inspiring environment in which small businesses, social enterprises, community based organisations, craftspeople, artists and freelancers can flourish. To do this with regard to the environmental impact of our business activities and to share resources and facilities.

<https://haltonmill.org.uk/>

<https://www.facebook.com/haltonwithaughtonpc/>



Upper Halton Weir.

Our Parishes - Aughton

Off the beaten track, on the northern edge of the Trough of Bowland, the village of Aughton is situated three miles from Halton and nine miles from Lancaster. Aughton is an ancient yeoman farming community, where basket making was the traditional craft. The housing stock comprises of ancient dwellings and barn conversions, with no new developments planned.

The old school, which closed in 1954, is situated next to the church and was attended by the more senior members of the parish. The Burton and Rigby Trust, established by Burton, who gave money to build the school, and Rigby, a former Rector of Aughton, is an old educational trust based in Aughton. Each year the Trust distributes funds to those children of the parish of secondary school age who might apply.

One of Aughton's claims to fame is an entry in the Guinness Book of Records for the Largest Pudding ever cooked. This was produced at the Aughton Pudding Festival in 1992, an event held every 21 years since 1792. It was last cooked (in 2013) by the present churchwarden, in whose family the secret recipe is closely guarded.



Aughton Pudding Festival

Profile of residents:

45% commuting from village for work

40% retired

10% working from home

5% working farmers.



<http://www.aughtonparishcouncil.co.uk/>

OUR SCHOOLS - St. Luke's CE Primary School, Slyne with Hest



Situated about 400 yards from the church the school has about 240 pupils registered.

The Ofsted inspection of May 2016 said: *'Pupils were unanimous in saying they feel very safe and well cared for in school', 'Since the previous inspection, pupils' progress has continued to accelerate across the school. In 2015, all pupils made at least expected progress by the end of key stage 2. Attainment in both key stages 1 and 2 was above that expected for pupils of a similar age' and 'Your school's self-evaluation and school development plans are of excellent quality and you use them effectively to ensure that everyone in school is clear about the direction in which they are heading'.*

The Diocesan Inspection of September 2016, which graded the school outstanding in all areas, said: **'The school, through its distinctive Christian character, is outstanding at meeting the needs of all learners.'**

The school regularly visits the church for special services and has done concerts to raise funds for our Mother's Union.

Members of the church, proposed by the PCC have roles on the governing body. The ministry team help with assemblies and RE lessons. We would hope that our new vicar will continue the very close links we have with the Headteacher, staff and children.



<http://www.st-lukes-ce23.lancsngfl.ac.uk/>



Pupils from 'Rotakids' at St Luke's School with the defibrillator they purchased through fund raising.



From the Lancaster Guardian 5th October 2017.

Slyne-with-Hest St Luke's CE Primary School seeks to serve the village along with all those who go to the school from further afield.

Whenever anyone goes to the school they always remark on the amazing amount of outdoor space they have. Over the past few years they have added lots of exciting play equipment, a school garden, pond and nature area along with a running track around the perimeter of the field. They try to get the children outside as often as possible!

While the school is proud of its academic results, they first and foremost want to ensure that the children develop a love of learning and enjoy their time with them. In order to achieve this they provide a wide range of activities within and outside the school day.

The school has a great reputation for sport – entering and joining in a wide range of local competitions and winning quite a few as well! The school also has its own band and large KS2 choir which performs in different venues.

For the past 18 months the school has offered full wraparound care on site with a Before and After School facility operating from 7:45 am - 5:45 pm each school day. The children enjoy a wide range of indoor and outdoor activities.

<http://www.st-lukes-ce23.lancsngfl.ac.uk/>

http://www.st-lukes-ce23.lancsngfl.ac.uk/index.php?category_id=88

Our Schools - St Wilfrid's, Halton



St Wilfrid's School has approximately 240 pupils - the vast majority living within the parish. School services are held in church about eight times a year, weather permitting.

Previous incumbents have



been active governors, the present Chair is our organist. The PCC appoints four governors, together with three appointed by the Diocese. Some church members are parent or community governors.

The current Ofsted grading is outstanding, as is the Diocesan Inspection. The school has a very strong Christian ethos, promotes Christian values throughout the curriculum and has extra clubs such as JAM. During Advent, for the last 16 years, the Parish Posada has visited each classroom, as well as homes throughout the village and further afield, ending back at Church for the Crib Service on Christmas Eve.

Ideally, our new Priest in Charge will continue to be part of the Governing Body, a Pastoral presence around the school, meeting regularly with the Head Teacher, lead assemblies and help develop these, and be part of the school community.

Quoted from their website 'At St. Wilfrid's, we are always looking at ways in which we can maintain our strong links with the local community, utilizing the skills of the staff, children and people living within Halton itself.'

The school building itself is used on many occasions by outside agencies and our children often represent St. Wilfrid's at other locations.'

<http://www.st-wilfrids.lancs.sch.uk/>

<https://reports.ofsted.gov.uk/inspection-reports/find-inspection-report/provider/ELS/119529>



Messy Church in St Wilfrid's School



Current Patterns of Worship

St Luke's: 8:00am - Holy Communion - (BCP) weekly
9:30am - Family Communion - (2nd and 4th week)
- Morning Worship - (1st and 3rd week),
4:00pm - (Winter)
6:30pm - (Summer)

1st week HC, 2nd & 4th week Evening Prayer, 3rd week Café Church
Thursdays: 12noon - Holy Communion

St Wilfrid's: 8:00am - (2nd Sunday) HC (Common worship)
10:00am - Family Communion (1st, 3rd, 4th & 5th week)
- Morning Prayer (2nd week)

St Saviour's: 11:30am - 2nd Sunday HC
- 4th Sunday Morning Prayer
7:00pm - 5th Sunday Evening Prayer

Baptisms - 1st & 3rd Sundays - St Wilfrid's - 12 noon
- St Luke's - 1:00pm } or during services.

Special Services throughout the year include:-

Crib Services, Carol Services, Harvest Festivals

Remembrance Services, Memorial Services

Pet Services, Services connected with our church Primary Schools

Sunday School/ Junior Church are run in St Luke's and St. Wilfrid's.



Church Activities

The benefice has several residential and nursing homes and our pastoral care includes their needs. Monthly services are held in two of them; Holy Communion is taken to people in our communities.

The Urban Saints Group, which meets on Friday evenings at St Luke's is a very active group which regularly send teams to Mexico and South Africa to help with building projects.



Mother's Union meets monthly at St Luke's & fund raises for various causes.



'Luke the Sheep' is a mission outreach from St Luke's at Christmas.

St Wilfrid's has a long-term mission partnership with CMS missionaries.

Food Bank collections are taken regularly from the churches to homeless charities in Lancaster. St Luke's has a weekly drop off donation point for a Food Bank in Morecambe.

The Emmaus Group meets fortnightly at St. Luke's for Bible Study & Prayer.

Contemplative Prayer Group meets monthly at St Luke's.

Two home Bible study groups meet monthly from St Wilfrid's. Ecumenical groups meet during Lent at St Luke's and St Wilfrid's. Messy Church runs occasionally at St Luke's and monthly from St Wilfrid's in the School Hall.

Parish Posada visits school and homes in Halton every Christmas.

Demographics

Slyne with Hest

Population 4,119

Average Age: 49

Ethnic Mix 93.2% English, 2.2% Scottish, 1.1% Welsh

Faith Mix – 76.7% Christian, 15.1% No Religion, 0.5% Muslim, 0.1% Buddhist

Education background of population – 24.4% Professional, 14.3% Managers directors and senior officials. Associate professional and technical 12.7%. Administrative and Secretarial 12.1%. Skilled Trades 10.2%.

In the latest index of multiple deprivation this area was ranked 29,176 out of 32,822 in England where 1 was the most deprived and 32,844 the least.

Income Deprivation 88% - Better than 88% of areas in England

Halton with Aughton

Population – 2,277

Average Age is 45

Largest number of residents are 60 – 69, with the second largest being 40-49 age group. Smallest number of residents are 80 plus and the second smallest are in the 20 -29 age group.

Ethnic Mix – 93.2% English, 2.1% Scottish, 1.0% Welsh, 0.1% Pakistan

Faith Mix – Christian 73.5%, No Religion 19.2%, Agnostic 0.2%, Buddhist 0.1%, Hindu 0.1%, Other 6.9%

Education background of population – Professional, 25.5%, Skilled Trades 12.9%, Managers, Directors and Senior Officials 12.1%, Associate professional and technical 11.7%.

Statistics

Baptisms, Weddings and Funerals in the Benefice 2016

	Baptisms	Weddings	Funerals (in Church)	Funerals (Crematorium)
St Luke's	10	6	5	4
St Wilfrid's	9	3	4	4
St Saviour's	0	1	1	0

Average attendance at Church Services

	8:00	9:30 or 10:00	11:30	4:00 or 6:30pm	7:00pm	Cafe Church	Thurs 12:00
St Luke's	8	48		5		25 - 30	5
St Wilfrid's		37					
St Saviour's			9		7		

Attendance at Services

	Sundays		Easter	Advent	Christmas Eve/Day
	Adults	Children			
St Luke's	42	14	68	35	193
St Wilfrid's	32	5	77		40
St Saviour's	8	1	16		30

Electoral Rolls

St. Luke's - 97
 St Wilfrid's - 76
 St. Saviour's - 28

Age Profiles

	Age 0 - 17	18 - 69	70+
St Luke's	21	35	25
St Wilfrid's	15	45	30
St Saviour's	1	7	1

Finances

	St Luke's	St Wilfrid's	St Saviour's
Income	48288	38435	9729
Planned Giving	23669	18926	2080
Amount per person per week	5.82		5
Expenditure	£12378	34774	11008
Parish Share Assessed	35094	23049 + fees 2315	3661
Parish Share paid	31767	Paid in full	Paid in full

The Vicarage

The spacious vicarage is situated in a private drive about half a mile from St Luke's Church. It has impressive views towards Morecambe Bay from the front and looks across to Lancaster from the rear.





The Vicarage is in the process of being assessed for painting etc since it was vacated.





Rear of the property in late afternoon sun.

Description

1930s detached house - approx. half a mile from church.

Located on a flat site on a small 1930s development on a private road

Four bedrooms

Roughcast walls and pitched slate covered roofs

Detached garage

Single storey sections forming entrance porch & utility room

Gardens to 3 sides & open fields to rear

GROUND FLOOR

Porch – 1.35 x 1.25M

Cloak room – 2.31M x 0.89M

Entrance hall – 1.68M x 4.90M

Study – 3.97M x 4.88M

Lounge – 4.18M x 4.81M (into bay)

Dining room – 4.90M x 3.30M

Kitchen – 2.67M x 6.07M

Utility room – 2.26M x 2.75M

FIRST FLOOR

Bedroom 1 – 3.79M x 3.30M

Bedroom 2 – 2.68M x 3.32M

Bedroom 3 – 3.79M x 3.79M

Bedroom 4 – 3.79M x 3.78M

Bathroom – 2.66M x 1.64M

WC – 1.76M x 0.79M

Landing - 2.80 x 0.90 + 2.00 x 2.52 + 1.65 x 0.96 + 0.95 x 0.80M

What we need.....

Someone who is

- approachable, has a pastoral heart and is a good listener.
- enthusiastic, energetic with a good sense of humour.
- a leader with collaborative leadership skills including the ability to set a vision, motivate and inspire members of the Church and the wider community.
- flexible enough to expand and develop a mix of styles of worship to nourish a range of churchmanship, including Fresh Expressions.
- able to nurture us in our Christian lives so that we, in turn, are equipped to reach out to others.
- gifted and inspired in ministry for all ages, particularly to the very young and young people.

Someone who

- has good administrative, organisational and IT skills.
- is willing to work with the local schools and be part of the school teams.
- can relate to the farming community and surrounding rural area, as well as the suburban and village communities.
- has good time management for the commitments within the three churches.
- will maintain a sustainable spiritual life for themselves.
- is able to maintain a good balance between ministry, personal and family life.
- is open to the Holy Spirit's leading in sources of inspiration, development and challenge.



What we can offer you.

- a warm and friendly welcome.
- a willing and enthusiastic team including two associate priests, a Reader, and Pastoral Care Assistant.
- helpful, appreciative and supportive Church Wardens and PCC's.
- supportive congregations.
- lay people who want to become more involved.
- people who want to encourage others to embrace the Christian Faith.
- an opportunity to develop creative, engaging and imaginative forms of Church, especially with the new Church Hall in Slyne.
- an opportunity to work with all ages.
- a lovely home close to beautiful countryside and near the sea.
- new friends.





Together
Everyone
Accomplishing
Ministry

Building





Our church communities have prayed constantly for the right person to be led to this post.

The benefice has much to offer, we are excited about the possibilities, opportunities & blessings for the future.

A warm and sincere welcome is waiting for the person who God is calling.

Could it be you?



Thank you for looking at our profile.