

Parish of St. James with St Matthew, Ecclestone

Parish Profile



St. James with St. Matthew - 'to grow, to witness, to care'

Introduction

Thank you for taking the time to read our profile. In this document we set out a description of our church, our parish and our mission. It is our prayer that through this document you will be able to get a clear picture of who we are, where we are headed and whether or not we are the right church for you to lead.

Our Mission Statement

A Church for Christ; a Church for all ages; family friendly,
with a heart to reach out to those seeking a deeper
relationship with the Lord.

Our Vision

Our vision at St James with St Matthew is to:
grow in the knowledge of our Lord Jesus Christ,
witness for Him in the parish and beyond and
care for those in need.



Our PCC

Our ideal candidate

- A minister who has a clear and deeply rooted, biblically based faith, secure and confident in their spiritual and personal life;
- A good leader with a strong pastoral heart, who relishes seeing people grow and flourish and has the ability and concern to nurture our congregation;
- A priest who will both lead and serve; enabling us to grow as disciples and in turn share the good news of the Christian gospel through our service to others;
- A good communicator with people of all ages; comfortable working with young people in Church, school and community settings;
- Someone who will undertake and encourage outreach to the young through contact with the schools and youth groups;
- A stimulating preacher who challenges the congregation to grow and share their Christian faith in word and deed;
- An effective ambassador for the parish, reaching out to local people and organisations, including those of other faiths and none, and building the role of the Church in the wider community;
- Someone who is aligned with our evangelical outlook; equally comfortable with a variety of worship: traditional and modern, formal and informal;
- Someone with organisational skills and the confidence to use technology, IT and social media;
- Able to delegate wisely, discern strengths and needs and will nurture vocations into both priestly and lay roles within the church.

What we can offer

- A vibrant church family committed to honouring God through our worship, witness, service and fellowship.
- An appreciation that ministry belongs to the whole church community and that we do not expect our priest 'to do everything', but rather to enable and encourage 'the body of Christ'.
- An openness to engage in new things that will help us to expand our ministry and grow as a church for the glory of God.
- A comfortable 4-bedroom vicarage, well-sited and with ample space inside and out.
- Full reimbursement of expenses incurred in the course of carrying out their duties, an expectation that they will take holidays and have days off and support for their CME and personal development
- A very warm welcome to whomever God sends us to be our next Parish Priest!

St. James with St. Matthew - 'to witness'

St. Helens & Prescott - local history

Whilst located almost entirely within the metropolitan borough of St Helens, the parish has affinities with both St Helens and Prescott, a former market town now in the neighbouring metropolitan borough of Knowsley.

St Helens

The eastern side of the parish is focused on the township of Thatto Heath. Originally a small settlement, its name derives from 12th Century "Thetwall" meaning a spring or stream with a water-pipe. St. Helens derives its name from the chapel of St. Elyn. Originally an agricultural area, coal mining was carried out as early as the 16th century. St Helens also benefited from the rapid growth of Liverpool from the late 17th century.

The railway network brought in migrant workers from all over the world providing skilled and manual labour needed for the growth of industry. The town grew as it had readily available supplies of coal and sand for making glass. A burgeoning chemical industry had also grown up. Most famed for its glass making, this started in the early 18th century. In 1826 William Pilkington founded a glass works in St Helens and there started the now world-renowned Pilkington glass company who still make glass in the town.

Prescot

It is believed to be Anglo-Saxon in origin, with the name 'Prescota-cot' meaning a 'priest cottage'. It was the centre of an extensive parish within the West Derby Hundred, which included fourteen other townships including St Helens. It pre-dates Liverpool as a settlement.

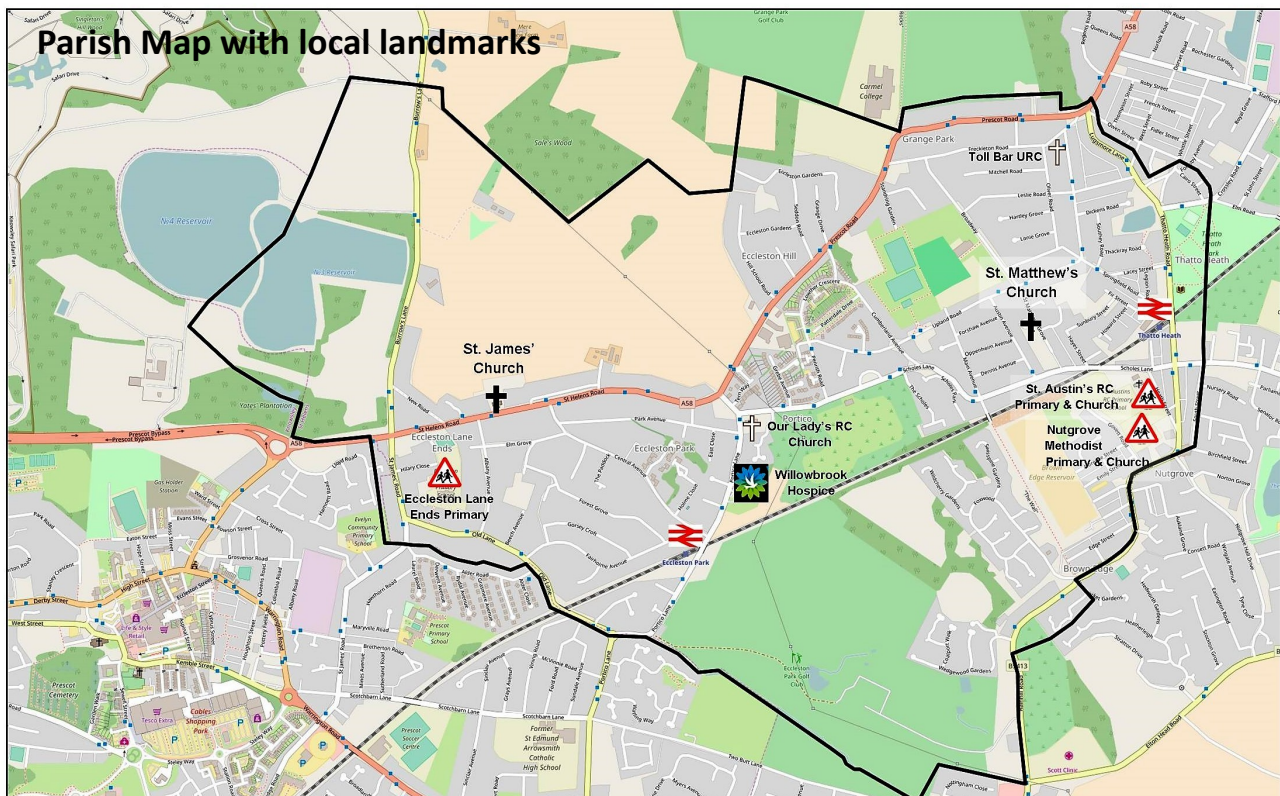
The town continued to develop and became a centre of pottery-making, as well as coal mining. From the 18th century its chief fame lay in the production of watch movements. The town was practically rebuilt from the 1750's including the construction of a number of fine Georgian houses, some of which survive. However by the 19th Century, the craftsmen could not compete with new mass-production techniques developed elsewhere and the industries declined rapidly.

In the 20th century there arose an almost exclusive dependence on cable-making and the B.I.C.C. (British Insulated Callender Cables) factory was by far the main employer in the town until its closure in the 1980s. Its site is now taken up by the development of the Cables Retail Park, along with new housing developments.

Our parish - where we are

The uniting of St James' and St Matthew's in January 2017 has created a unique opportunity to take forward a new parish based on a strong foundation of witness and worship. Its boundaries contain a diverse mixture of reasonably affluent areas of private sector housing combined with a large estate of social housing, some of which is currently being demolished to make way for new community housing. In addition there are a number of sheltered and supported housing schemes, nursing and care homes and a hospice. The diversity of housing types presents a range of different challenges and opportunities.

The Parish is predominantly residential and in parts rural, including the edge of the internationally renowned Knowsley Safari Park. There is now little in the way of industry or commercial premises in the parish other than some local shops, Thatto Heath local centre and several public houses. Other amenities are listed at Appendix 1. There are a number of other churches of a variety of denominations within the parish, and also 3 primary schools and a few nurseries. Carmel Sixth Form College stands on the parish boundary. One of the oldest buildings in the parish is the former Lane Ends School, currently running as a very successful nursery linked to the church through its endowment status with the incumbent having traditionally chaired the charitable trust.

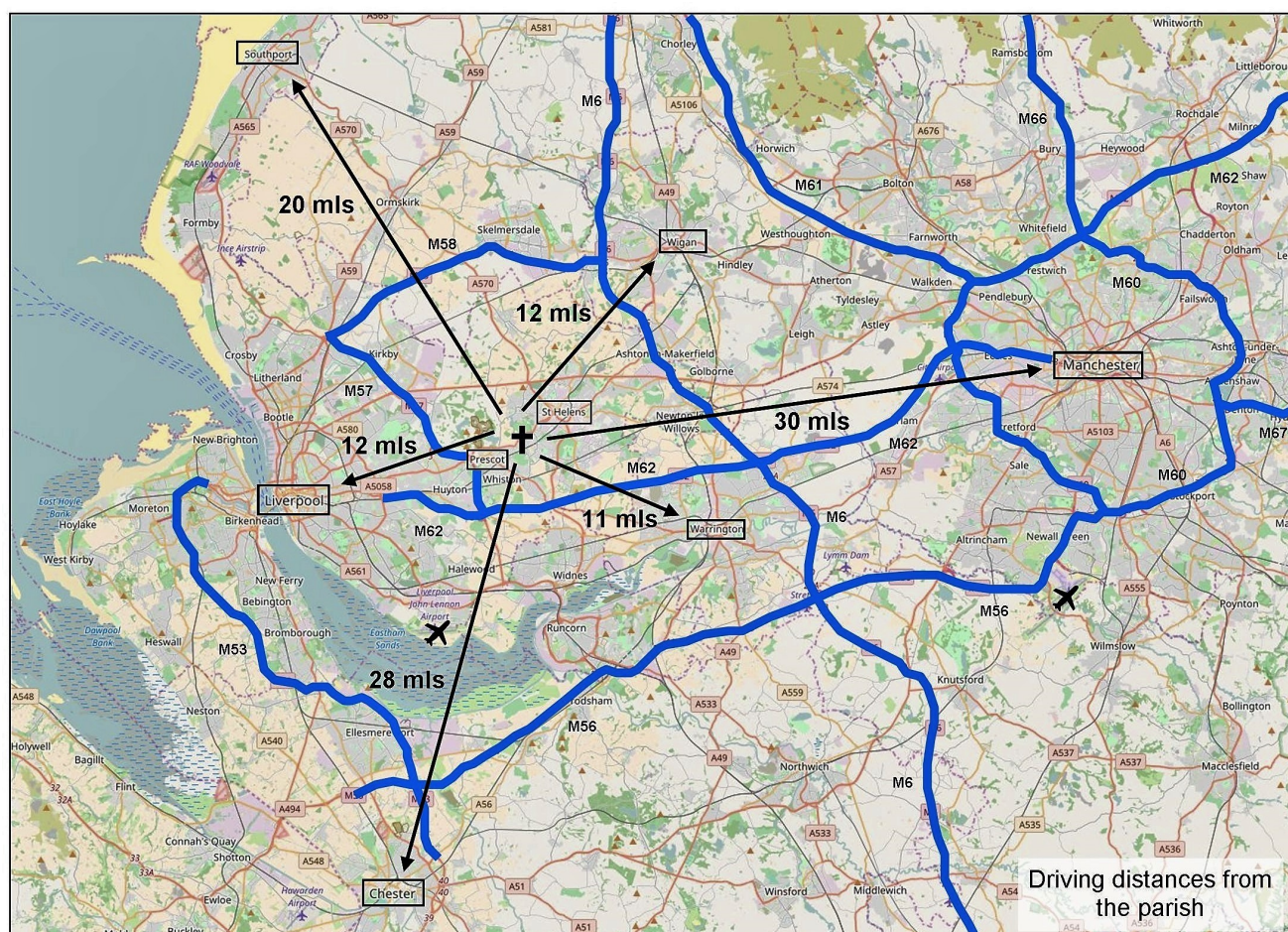


St. James with St. Matthew - 'to grow'

Parish and regional maps

Given the proximity to Prescott there is local excitement for the development of The Shakespeare North Theatre with construction commencing in early 2018. This theatre will be the northern apex of the national cultural Shakespearean triangle of Stratford-upon-Avon and the Globe Theatre in London. Perhaps more importantly there will be the unique development of an International University College with students from across the world attracted by its postgraduate courses in Shakespearean stagecraft.

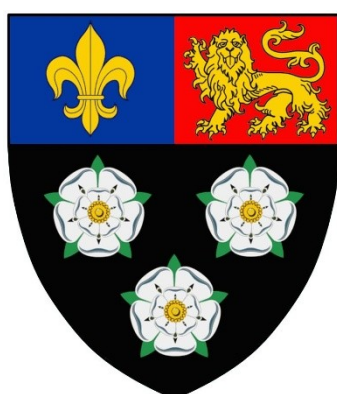
The Parish is well served with easy access to both rail and road networks, with two rail stations in the Parish and the motorway network within 5 minutes drive of the vicarage. A map of the north-west region illustrating our proximity to numerous major towns, cities and transport links is below.



Our parish - a tale of two halves...

The parish does not follow ward boundaries, however the information below (taken from various published sources) is given as an indication of the composition of the two former parishes, based on the wards within which they largely fall. Amongst other things it illustrates the challenge, and potentially the opportunities, arising from the distinct economic differences in the two halves of our new parish:

	FORMER PARISH OF ST JAMES (Eccleston Ward)	FORMER PARISH OF ST MATTHEW (Thatto Heath Ward)
Population (St Helens borough total population 2016: 178,445)	11,622	12,551
Ethnicity	97% White British	95% White British
Religion	84% Christian 5.5% Not stated 9% No religion 1.5% Other religions	78% Christian 5.25% Not stated 14% No religion 2.75% Other religions
Deprivation	Among the 20% least deprived neighbourhoods in the country	Among the 10% most deprived neighbourhoods in the country



Prescot Town Crest



St. Helens Town Crest

St. James with St. Matthew - 'to care'

...but united

Why did St James unite with St Matthew's?

During 2014 St Matthew's PCC began the process of discerning where God was leading them as a fellowship and as a parish church. Various factors came into play to determine the future:

Finance

St Matthew's committed giving base was shrinking. For some years the regular giving income had been reducing, resulting in the need to draw upon reserves. It was clear that St Matthews was unable to meet its annual expenditure from regular sources of income. With approximately three years of reserves available to supplement the expenditure, St Matthew's had a limited life. The resources would eventually be exhausted resulting in the possible closure of the church.

Congregation size

Whilst St Matthew's building is in an excellent state of repair, due to the hard work of the folk who look after the maintenance of the church and grounds, the number of regular worshippers was reducing to the extent that the faithful few were becoming stretched and unable to undertake outreach work. The small congregation size was also felt to deter newcomers.

Shortage of clergy

St Matthews had been without its own priest for 10 years and with 40% of current clergy retiring in the next 10 years, there will remain a significant shortfall in numbers. As a result the old principle of one clergy per church was not expected to be attained again unless the number of churches was drastically reduced.

In light of the above, the PCC began the process of alerting the diocese to the situation and invited the Archdeacon to attend a meeting and suggest ways forward. After much discernment, the favoured option was to unite with a neighbouring parish and re-designate St Matthew's Church as a Chapel of Ease. This offered the flexibility to maintain a presence in Thatto Heath and create a new, larger and more viable parish. Having shared a priest and elements of fellowship with St James Eccleston Park over the previous decade, an approach was made to their PCC who graciously agreed to the proposal, leading to the creation of the new united parish on 1st January 2017.

History of St James' and St Matthew's Buildings

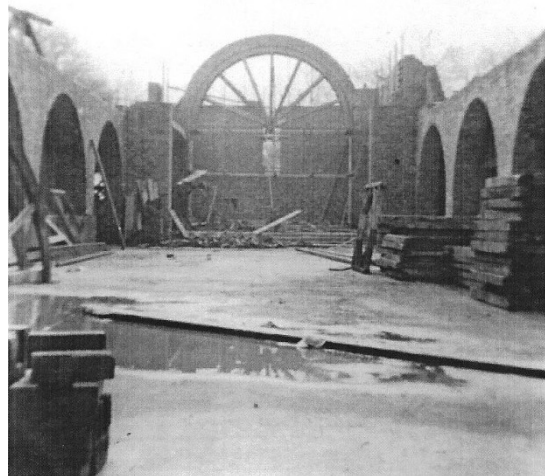
St James was a small community church, built in 1922 for the families and workers of the local area. Prior to its construction worship took place in the local school rooms which was a church plant from Christ Church, Ecclestone.

The church was built thanks to local benefactor Mr. F.R. Dixon-Nuttall and was presented free from debt. When the church was built there were no pews or chancel screen. The building was used during the week by parish groups and for meetings. During the week the chancel was closed off by means of a curtain. Chairs were used until 1932 when donations were received from several members of the congregation for the purchase of pews. Purchases of chancel screens, lectern and pulpit followed.

The former parish of St. Matthew was created in 1917 after a decree by Bishop Chavasse that he would like to create a parish separated from Ecclestone. The congregation grew quickly, worshipping in the school in Scholes Lane. This site was later swapped for the current site of St Matthew's Church. It was not until 1949 when approval was granted to commence the process of raising the £30,000 needed to build the new church building for the parish. The sum of £12,000 (or the equivalent of £300,000 today) needed to be raised locally. The Foundation Stone was laid in October 1952 and the church was consecrated in July 1954.



St. James' Church shortly after opening



Early stages of construction at St. Matthew's

St. James with St. Matthew - 'to witness'

Our Church Family

*“If you have love for one another then everyone will know that you are my disciples”
John 13:35*

At our Sunday services we welcome all who walk through our doors. We offer a friendly welcome on arrival and we try to help everyone to feel at home whatever their needs. Tea and coffee are served in the lounge area after the service to allow for ongoing fellowship.

Service pattern:

Week one: 10.30am Family Worship with Holy Communion, St James
Week Two: 10.30am Family Praise with Parade, St James
Week Three: 10.30am Family Worship with Holy Communion, St James
Week Four: 10.30am Family Worship, St James

In addition there are approximately 6 services per year of Morning Worship at 9.30am at St Matthew's.

Other occasions are celebrated with special services in St James, St Matthew's and across the Eccleston Team. Again, we offer a warm and friendly welcome to those who attend for these special occasions.

Beyond our Sunday worship, we have bible study sessions, a house group and a monthly prayer meeting; all are opportunities for us to grow as followers of Jesus.

God has called us together to become a Church Family; not just to become a church for families but a Church for Christ and a church for all ages, with a heart to reach out to those seeking a deeper relationship with the Lord.

Over the last two years our Church Family has developed from three very distinct congregations, worshipping in two separate churches and buildings, to being one family worshipping at St James' church. This has evolved gradually, firstly from the successful combining of the St James' Family Praise congregation (which worshipped in the church hall) with the more traditional Sunday service which was held in the church prior to its reordering. The second stage of our evolution came when St Matthew's church was designated as a Chapel of Ease in January 2017. As only a handful of services will now be held in that building, the members of the former congregation have had to choose where to continue with their worship and almost all decided to worship at St James.

St. James with St. Matthew - 'to care'

Our Church Family (continued)

Our Church Family is made up of people from all walks of life and every generation. We value our blended family and recognise our different needs including welcoming Lola, an autism assistance dog. This is reflected in our current pattern of worship, which includes both traditional and modern hymns, children's worship songs and a monthly parade service with the boys and girls from our uniformed organisations, who meet at both St James' and St Matthew's.

Whilst our typical Sunday congregation averages 57 adults and 12 children this can ebb and flow due to the commitments of modern family life, although rarely falling below 50. Since uniting as the new parish, our combined electoral roll now comprises 103 members, 60% of whom are resident in the parish.

We are also blessed in our worship with having competent and gifted members of our Church Family who are able to:

- Plan, lead, and preach at our various worship services when needed.
- Deliver young people's ministry.
- Form the music group, which inspires and leads us in both modern and traditional sung worship.
- Use other ministries and skills to assist with and enhance our worship.

Having members of our Church Family who are keen to use their gifts to serve God's Kingdom in the church, parish and wider community is one of our key strengths. However, we are keen to focus more on seeking out and developing the gifts we have yet to discover amongst us.

The Church Family strives to be loving, welcoming and spiritual, providing prayerful support and love to all. There is often laughter at our services and we are blessed with having fun amidst our worship.

Our range of services alters throughout the month, some having more emphasis on the children than others, as detailed above. Healing services were also regularly held on the fifth Sunday of each month, until the previous Team Rector retired, and it is hoped that these services can be re-established in due course.

In serving our local community, around 5 baptisms, 2 marriages and a dozen funerals will typically be held each year, across both churches in the parish.

We also value our strong ecumenical link with Our Lady's RC Church and hold annual joint Lent courses, Easter and Carol services.

Our Church Family (continued)

On the first, third, fourth and fifth Sundays in the month we run JIGSAW ('Jesus Is Great, Super, Awesome and Wonderful'). This is for children age 3-17 in our Church Family, to help them explore the Christian faith together with other children. We meet together as our whole Church Family and the children then leave the service after the opening worship and children's talk, returning for communion and the final hymn. Children are also welcome to stay throughout the service and there is a play area and play bags at the back of church.

Fellowship events are an important part in the life of the Church Family. We hold monthly Coffee Mornings, annual Afternoon Tea and other regular fellowship meals or entertainment nights throughout the year. For example, in the last 12 months we have held a Frank Sinatra Tribute Night, a Quiz Night and a Chinese banquet.

Links into our community

We are committed not just to serving God within our buildings, but also to making him known in our local community. Church is something we take out to those around us rather than waiting for people to come to us, for example our work within a local primary school is a key part of our mission, as is our presence in the local hospice through volunteer workers. We are also starting to use newer ways of reaching out to our local community through [Facebook](#).

Young people

We have excellent links with one of the local primary schools – Eccleston Lane Ends. While it is not a church school, it welcomes our involvement and we hold various activities there. The different year groups have the following experiences each year, while visiting the church building:

- | | |
|------------|---|
| Reception: | Wedding |
| Year 1: | Harvest festival, baptism |
| Year 3: | Signs and symbols of Christianity |
| Year 5: | Ultimate questions e.g. How old is God and How did the world begin? |

The children also join in our Afternoon Tea in June, Scarecrow competition in October, Operation Christmas Child Shoebox Appeal, and WOW Fun Day during Advent. We read Bible stories to the Reception children, take assemblies, and give a talk each summer to the children and parents preparing to join the school in the new academic year. There are several members of the Church Family who serve on the Governing Body.

St. James with St. Matthew - 'to witness'

Our Church Family (continued)

In addition to these occasional events, we also hold weekly activities:

WOW (Worship on Wednesday) is an hour-long child-centred service for children and their parents/carers, held in Lane Ends school at the end of the day.

PramPushers is a parent/carer and tots group, again held in Lane Ends school, on Thursday mornings. We have a Bible story, crafts, drink and toast, open play, song and closing with prayers.

Supertots is a parent/carer and pre-schooler's group, held at St Matthew's Church on Tuesday mornings. It offers fellowship for parents, refreshments and opportunities to discuss faith and enjoy a bible song or similar.

We believe that children are inherently spiritual. These groups provide the children and their parents/carers a safe and fun place to explore their spirituality and learn more about their Christian heritage.

The previous incumbent was deeply involved in leading and developing these links, particularly WOW and PramPushers and we would hope that our new vicar will continue this work, further developing this ministry, supported by willing volunteers. Given the new united parish, there is now also potential to create links with the other primary schools that are now in our parish.

Willowbrook Hospice

The hospice lies within the parish. With 12 in-patient beds, outpatient clinics and wellbeing services, Willowbrook provides specialist palliative care services to the people of St Helens and Knowsley. Willowbrook employs its own chaplain. However, the Hospice cannot function without the support of its 300+ volunteers, including chaplaincy volunteers from different churches and denominations. A number of our Church Family volunteer in varying roles, and this link continues.

There are a number of nursing and care homes in the Parish in which previous incumbents have provided pastoral care and home communion. This remains another opportunity for further mission.

Other organisations

A range of other groups, organisations and businesses use the facilities at both churches including Over 60's, Slimming World, Over 55's, Safe Families for Children, Beavers, Cubs, Scouts, Rainbows, Brownies, Guides, Yoga, a Dance School and an Art Group.

Our Buildings

St Matthew's Church & Centre



Designated a Chapel of Ease on 1st January 2017, St Matthew's Church, which opened in 1954, is nevertheless a fully equipped and functional church building, with full audio-visual and loop systems and a fully-functional manual pipe organ.

The church itself is in very good condition having been cherished by the congregations over the years. Regular Quinquennial Inspections have been carried out and subsequent works have been completed over the years with the most recent in 2017 presenting no significant concerns. The church is set out with pews, with a separate 'lounge' area to the rear, separated by glass screens. There is also a small side chapel adjacent to the chancel.

The St Matthew's Church Centre, opened in 1996 and attached to the church, offers perhaps what is one of the biggest opportunities for growth and mission in the new parish, and in particular the eastern end where unemployment and deprivation levels are high and in marked contrast to the western end.



St. James with St. Matthew - 'to grow'

Our Buildings (continued)

The centre is very well maintained. It offers a large hall (14 x 9m), two meeting rooms, full toilet facilities including disabled and baby change, as well as an office and a fully-equipped catering-style commercial kitchen with a serving hatch to the hall. In addition there is an enclosed secure play area to the rear. There is access to a phone, PC, printer/copier and broadband in the office, and wi-fi is available across the centre. There is disabled access to all areas of the centre. The church and centre sit in well-maintained grounds with a variety of shrubs and mature trees, parking facilities and a small, peaceful Garden of Remembrance.

The former St Matthew's Vicarage has recently been sold and the Vicarage for the united parish is located next door to St James' Church.

St James' Church & Hall



St James' Church building dates from 1922, which means, of course, that in less than five years it will celebrate its centenary. It stands on a large plot of land on St Helens Rd, Eccleston. The church building is relatively small and of brick faced construction built in the 1920s.

Also in very good condition, the church is set out with comfortable and stylish chairs, with a separate 'lounge' area to the rear, separated by glass screens. The latest Quinquennial Inspection for the Church in 2017 has been received and whilst there are some obvious cosmetic maintenance issues to the exterior of the building it is otherwise sound and no significant concerns have been raised. A recent reordering has provided individual seating, upgraded the electrics and provided access for people with disabilities. The sound system has been upgraded and the church now has a fully operational loop service and screen facilities for audiovisual worship. The church also benefits from a manual pipe organ.

St. James with St. Matthew - 'to witness'

Our Buildings (continued)

The Church Hall is a more recent, stand-alone structure dating from the 1950s, subsequently extended to include a mini-hall. The position of the church hall is less straightforward. The PCC is currently considering the need for a survey to determine its full condition and lifespan. Despite it being a younger building it clearly has some issues including a leaking roof and some areas not possible to use such as the stage area. This will be an ongoing item for the PCC to review in terms of suitability and sustainability. It currently remains well-used however. The Hall also contains an office area with PC, printer and photocopier.



The church grounds include a small car park of approximately 20 spaces though the main road outside offers plentiful additional parking. There is a small Garden of Remembrance, which despite the location of the main road is described as a haven of peace and quiet reflection by its many users.

The Vicarage

A 4-bedroom detached vicarage (built in 1976) with two reception rooms, study and meeting facilities and gardens to the front and rear adjoins St James' church grounds, separated by a fence and with private gated access. The large front garden, currently laid out as lawn bordered by trees, is well maintained by volunteers. The building is in good condition and well maintained by the Diocese.



Our wider context

Financial position

St James with St Matthew's is in a healthy and viable position, with no outstanding debts or loans and our Parish Share is always paid on time and in full. Capital sums totalling £34,852 were transferred from the former parish of St Matthew Thatto Heath, which together with the capital sum of £3,010 held in the St James' building fund means that the parish has reserves available both for extending its mission and maintaining its buildings. Income and expenditure for the year ended 2016 for the two individual parishes showed St Matthews to be consistently drawing on reserves and St James in a break even situation.

As a newly united parish, a full year's income and expenditure is not yet available. However in the first 11 months, income of £57,343 was received as follows:

Cash offerings during regular services:	£8,080
Envelope giving during services:	£11,614
Standing Order income	£8,145
Fees from funerals and weddings:	£2,124
Ad hoc donations from additional services:	£1,707
Gift Aid claims:	£8,612
St James Hall and St Matthews Centre hire:	£13,987
Fundraising:	£3,074

Expenditure of £58,594 during the same 11 month period is illustrated below:

Parish share	£31,192
Insurance	£5,056
Vicarage costs	£1,140
Utility bills	£8,926
Staff wages	£8,715
Repairs and maintenance	£664
Upkeep of services	£299
Office expenses	£1,216
Other	£1,386

Although this suggests a small deficit at year-end, we are confident that this is as a result of cash-flow centred around gift aid claims, as well a natural settling period for the new parish. The PCC has expressed its confidence in our finances by agreeing to support other charities through Mission Giving at a rate of 5% for this year. It is important that He receives the first fruits and not the leftovers.

Our wider context (continued)

The Eccleston Team

The parish of St James with St Matthew, Eccleston is part of the Eccleston Team of churches. The other three churches are St. Luke, Eccleston; St. John, Ravenhead; and Christ Church, Eccleston. The total population living within the team boundary is approximately 36,000. With a total parish share of in excess of £190,000, the Team is a net contributor to the Diocese.

Originally formed with five stipendiary clergy, the 2007 Deanery Plan (arising from the Liverpool Diocesan Review), allocated an establishment of four stipendiary clergy to the team. Until his retirement in May 2017, the Team Rector had responsibility for St Matthew, Thatto Heath and St James Eccleston Park (now united in our new parish), with 3 Team Vicars each serving St John (Rev. Dozie Moneme), St Luke (Rev. Peter Gilroy) and Christ Church (Rev. Sonya Doragh).

When established, the Eccleston Team ministry was grateful for the services of 4 retired clergy based at St James, St Matthew and Christ Church. Today there are three retired clergy offering valued, but increasingly limited (due to ill health), support. There are no licensed Readers within our Parish however one is to be licensed shortly and there are also several across the team. This means that whilst the need for regular cover by team clergy at St Matthew's church has ceased, there is still a requirement for team clergy to offer assistance to the other churches during holidays, interregna etc.

In respect of the work of the Team as an entity, there is some element of joint working and events. Services for Ash Wednesday, Maundy Thursday, Ascension Day and Confirmation are held jointly. Team clergy have taken the opportunity to meet for bible study and prayer. For a variety of reasons including interregna and illness, the Team has not yet had a chance to fully come together as a cohesive unit. It is therefore an exciting time for us all as there will be a full complement of clergy ready to work together.

That being said, overall the Eccleston Team is a strong Christian presence in St Helens; there is a good mix of faithful, spiritual inherited church as well as various forms of Fresh Expression and other outreach. For anyone coming into the Team they will find support for their ministry, an opportunity to develop outreach supported by a prayerful base founded upon faithfulness, as well as the desire to see God's Kingdom grow in the place where God has set us.

Our wider context (continued)

Statement from St. Helens Deanery

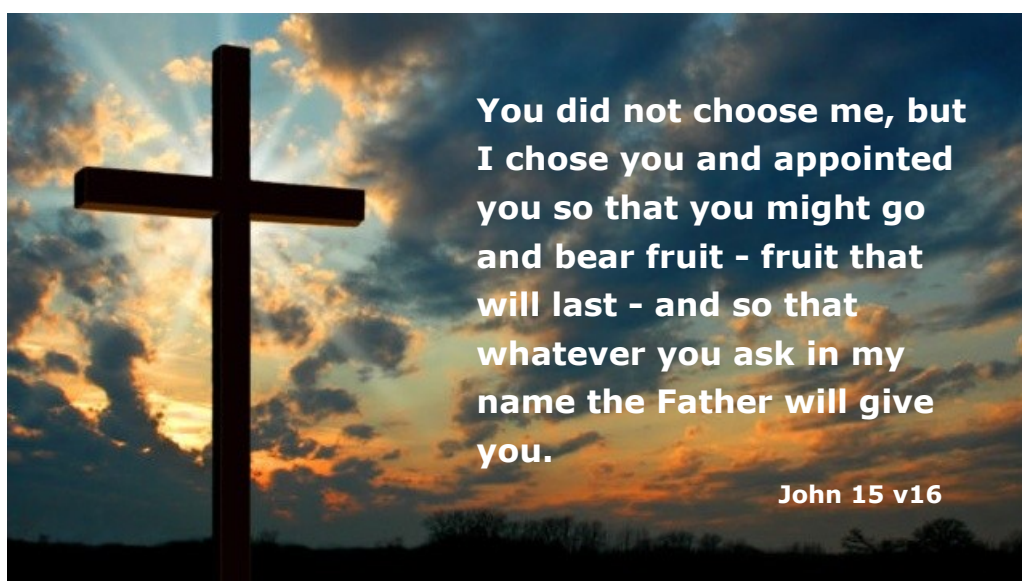
The Deanery of St. Helens has a reputation for being a progressive and forward-thinking Deanery.

The Clergy Chapter is well attended, proving a supportive and encouraging place to pray, learn and grow together. Each year we have a vision day and in 2017 it was held in November and was attended by thirty clergy and lay people as together we considered the future shape of the Deanery. This was a significant day and we are currently deciding on the next steps in being more missional in reaching others, working more collaboratively and how to do church differently in fast changing times.

At a local level most of our churches are in teams, providing support, joint learning and a sharing of resources and gifts.

This is an exciting time for the Deanery. Having embraced the Diocesan Vision, we in St. Helens are committed to being a Bigger Church making a Bigger Difference.

Rev David Eastwood - Area Dean for St. Helens



Appendix 1: Local Amenities

Other Churches

- Our Lady Help of Christians RC Church
- Nutgrove Methodist Church
- St Austin's RC Church
- Toll Bar with Prescot United Reformed Church

Nursing Homes, Sheltered Accommodation and Hospice

- Mayfield Nursing Home
- Osbourne Court Sheltered Accommodation
- Parkside Rest Home
- Scholes Croft Supported Living Accommodation
- Willowbrook Hospice

Schools and Nurseries

- Eccleston Lane Ends School
- Eccleston Park Day Nursery
- Nutgrove Methodist Aided Primary School
- Portico Lodge Nursery
- Small Wonders Nursery
- St Austin's RC Primary School
- Thatto Heath Playdays Nursery

Transport links

- Eccleston Park Railway Station
- Thatto Heath Railway Station

Sports Facilities

- Broadway Badminton Centre
- Eccleston Park Golf Club
- Eccleston Park Lawn Tennis Club
- Prescot and Odyssey Cricket Club
- Portico Vine Rugby Club
- West Park Rugby Football Club

General Local Facilities within the parish

- Bowery Medical Centre
- Eccleston Hill McColls and Post Office
- Scholes Lane Playing Fields
- Spinney Medical Centre
- Thatto Heath Library
- Thatto Heath Park
- Thatto Heath local shops
- West Park Mews – Spar, Subway and Orange Fish
- Various pubs (Grapes Hotel, Springfield Hotel, The Wellington and The York)

St Helens Attractions

- Citadel Theatre
- Cineworld
- Haydock Park Racecourse
- North West Museum of Road Transport
- Saints Rugby League
- Theatre Royal
- The Dream
- World of Glass