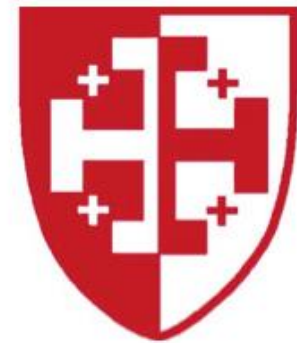




St Chads Far Headingley

"Let your light shine"



Parish Brochure 2019

Our brochure

We hope you find the information here useful. To help you navigate, we've used the following sections:

Page 3	Our church family
Page 4	Our worship
Page 5	Our building
Page 6	Our parish centre
Page 7	Our grounds
Page 8	Our vicarage
Page 9	Our parish
Page 10	Our community
Page 11	Our team ministry
Page 12	St Michael's
Page 13	All Hallows
Page 14	Your future?



Thank you for finding out about us. This is only a very brief introduction to our church and who we are. More detail about our activities and ethos are contained in our Parish Profile, and on our website, which we would encourage you to explore.

Our church family

We are a friendly, welcoming church made up predominantly of young families and older members of the congregation. Our average attendance is around 100 adults over the three Sunday services, with around 25 under-16s each week.

One of our major aims for the coming years is to increase our engagement with the teenagers and young adults of our parish so that we can serve their needs better.



We asked our youth groups what they thought made our church special and what they'd like to see in a new vicar, and they said:

- "Helpful; Friendliness; Kindness"
- "I like the music, the choir and all the music; everyone says hello; there is a homely feel; when we have short services; when services are interactive".
- "I would want them to involve us; make services good for every age; bit strange, but they need a good sense of humour".



Our church worship

St Chad's Parish has a strong attachment to a well established Anglican Tradition of an established bell tower, choral worship led by an organ and small but dedicated robed choir, well known hymns and a well ordered liturgy.

While hoping that a future incumbent will respect or share these traditions, as a church we are aware of the need to grow and look outside of our comfort zones for ways to share the good news of Jesus with the Community.

Theologically, we are an inclusive church who value both faith and reason. We aim to develop our understanding and our relationships with God using our hearts and our minds.

Our current pattern of worship:

On Sundays, we usually hold three Services:

- 8.00am Holy Communion (BCP)
- 9.30am Holy Communion (Common Worship)
- 6.30pm Evensong (BCP)

During the week, Morning Prayer (BCP) is held daily, followed by Holy Communion (BCP) on Thursday mornings.

We also meet less formally for café church (known as “another time”) in the Parish Centre each month, which is lay-led, and additional seasonal study groups and services are held throughout the year especially during Lent and Advent.



Our church building

St Chad's is a large Victorian stone-built church, built in 1868 to serve the growing suburban population.

Our church was re-ordered internally in 2010/11, to make it accessible and to allow us to use the space we have in new ways. The flexibility provided by our re-ordered church allows us to host rehearsals and large musical events and performances, including by Leeds Festival Chorus. We are also fortunate to have a very highly regarded Harrison and Harrison organ to lead our worship and other musical events.

The fabric of our church is in generally very good condition and as a building it is one of the architectural highlights and most prominent landmarks of suburban North Leeds.

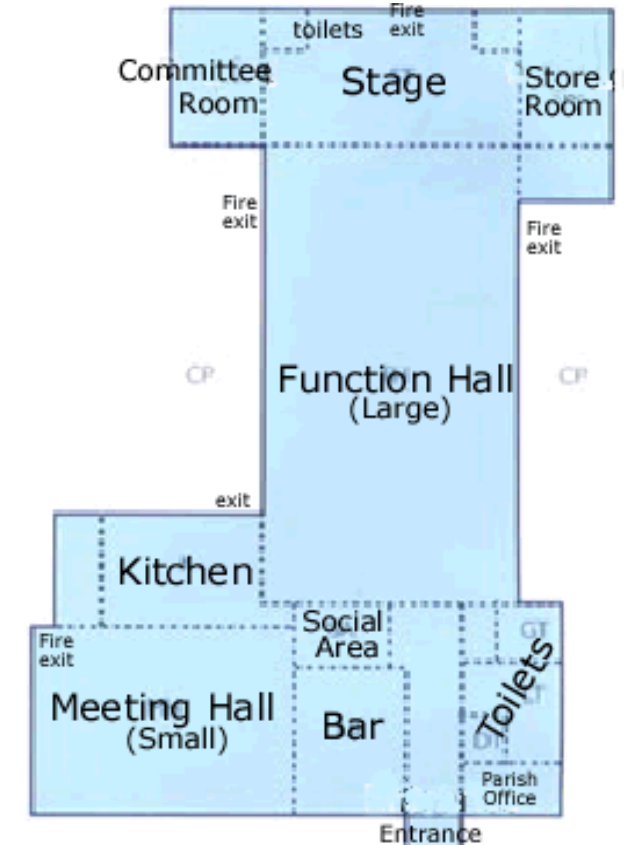


Our church parish centre

We have a large modern Parish Centre set within our church grounds – it includes a large hall, a small hall and several smaller meeting rooms, as well as a bar, a large kitchen and good on-site car-parking provision.

These facilities enable us to host our own community initiatives, youth groups and uniformed organisations (Beavers, Cubs, Brownies, Scouts and Explorer Scouts) and our Parish Centre is also extensively hired by the wider community for events, dance and fitness groups, evening classes etc. booked up usually months in advance.

Our Parish Centre is managed by our committed Parish Centre Management Committee, and it's a key part of how we as a church are able to engage with and serve the people of our parish.



Our church grounds

St Chad's is set in substantial, leafy grounds which include a cricket pitch and further lawn areas to the front of the church, and a large graveyard of mature woodland to the rear.

Our grounds are looked after by our Green Team of volunteers. We work hard to be an ecologically minded church and the dedication of our Green Team was recently recognised when its leader Sue Dalton received the *Church Times* Green Champion award in 2017.

There is also a Garden of Remembrance adjacent to the main road, where our Remembrance Sunday commemorations are held.



Our substantial church grounds enable us to serve and engage with our community in a number of ways, including by hosting:

- St Chad's Broomfield Cricket Club, which has youth teams, several mens' teams and a womens' team
- St Chad's tennis club
- Our Community Orchard



Our church vicarage

St Chads has a large 4-bedroom vicarage, which is set centrally within the church's grounds, between the main church building and our Parish Centre.

The vicarage benefits from a private enclosed garden to the rear, an additional lawn to the front, off-road parking set back from the road, and a garage. It was refurbished in 2010, and has solar panels for hot water which reduce its gas costs.

Because the vicarage is located on-site, its immediate surroundings include mature woodland and the open playing fields of St Chad's Cricket Club.

The vicarage is within the catchment area of good local schools, and is around five minutes walk from the centre of Far Headingley with its pubs, cafes and restaurants.

It is also well-located for travelling in and out of Leeds City Centre and to the Universities on the A660, which can be easily done by car, bicycle or by using the frequent bus services.



Our church parish

Far Headingley is a suburban parish made up of several distinct areas, each with its own character and identity. The parish is approximately 3 miles north-west of Leeds City Centre, and straddles Otley Road (the A660), which is a main route into Leeds.

The parish is residential in character and has good schools within its boundaries and nearby. Far Headingley has shops, pubs, popular restaurants and small businesses located on or near the main road. There is a small local cinema a few minutes' walk from the church.

As a Church we are well located, centrally within the parish. The attendances we see at major events such as Christmas services and, in 2018, our 150th Anniversary celebration indicate that St Chads is highly valued and supported in our parish even by those who are not regular weekly attendees.

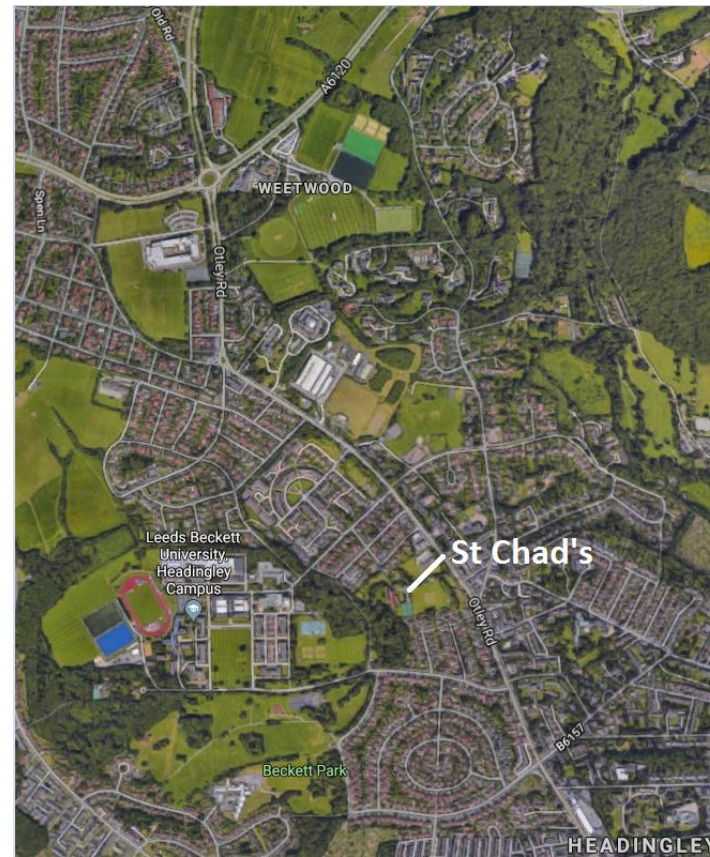
One of our major aims in the coming years will be to reach out more effectively to the people of Far Headingley outside of our existing congregation.



Lawnswood

The Filter Beds

West Park



Weetwood

The Drummonds

Far Headingley Village

Moor Road

Becketts Park

Our church wider community

At St Chad's our aim is to be at the heart of the community. The vibrant suburb of Headingley, with its extensive shopping facilities, pubs, restaurants, famous cricket and rugby grounds and large student population, adjoins the southern boundary of the parish. Our church grounds are adjacent to Leeds Beckett University's main Beckett's Park Campus.

Leeds is a dynamic university, legal, financial, cultural and commercial centre. It is within easy reach of the Yorkshire Dales, North York Moors and Peak District National Parks, the historic city of York, and the East Coast.

Like many cities in the North of England, Leeds is a city of contrasts. Whilst the parish of Far Headingley is predominantly "leafy suburb" in character, we are situated nearby to urban areas of considerable deprivation.

We think that serving the people of Leeds requires the ability to meet and engage with people in a very wide range of social, economic and cultural contexts. As a church, we could be stronger in this area and we would like to explore it as a greater focus of our outreach and mission.



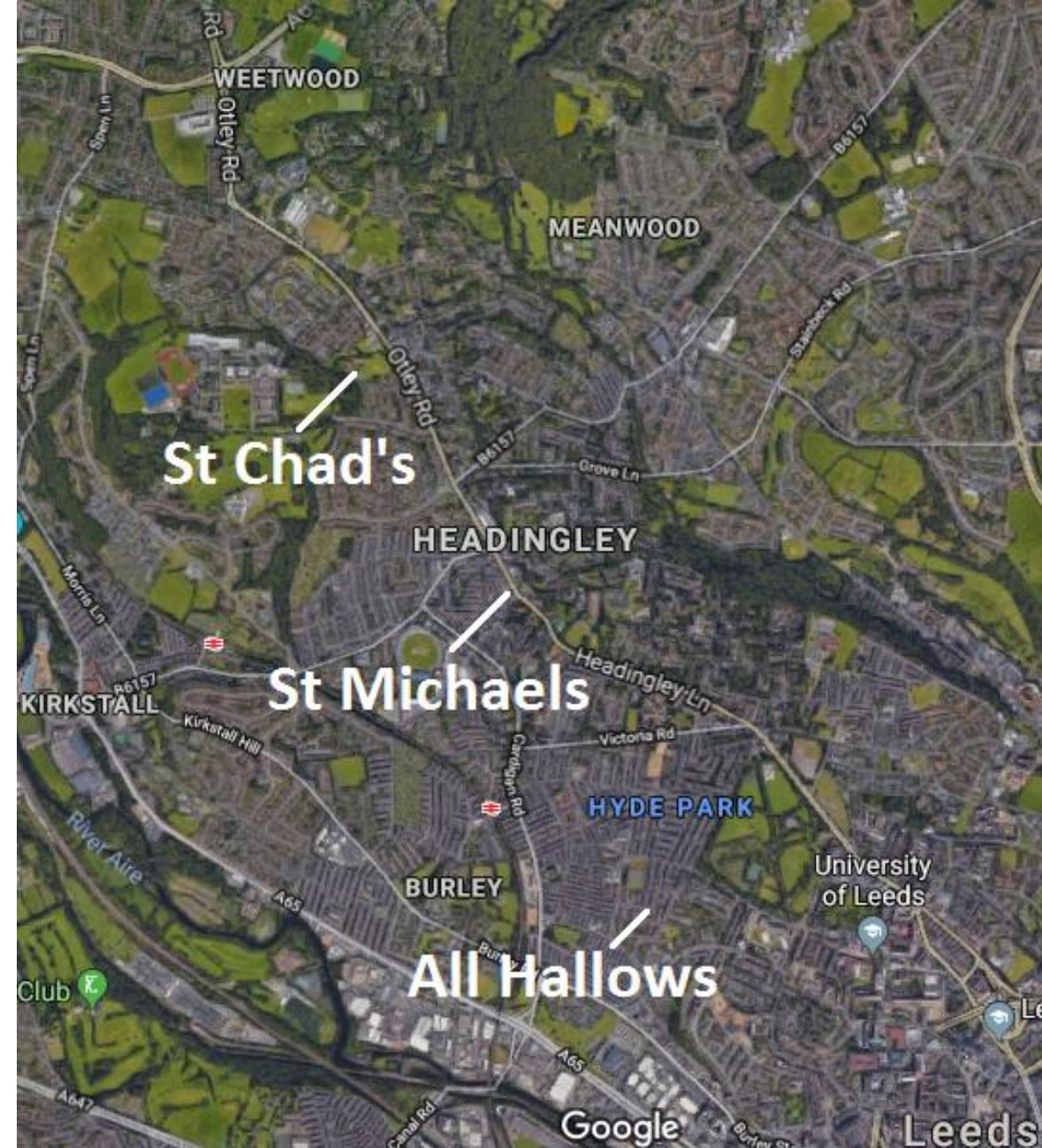
Our team ministry overview

This post has the potential to be a crucial part of building up a large and thriving Christian ministry in a populous part of Leeds.

The Headingley Team Ministry (St Michaels Headingley and St Chad's Far Headingley) has been working informally with the parish of St Margaret and All Hallows, Leeds.

Following informal consultation with the three PCCs, a formal consultation is due to take place on a proposal to bring the three parishes together into one Team.

We value the close relationship we have with St Michaels and with All Hallows. Our shared vision is built around working together, sharing the gifts and experiences we are each able to bring, so we can best serve the people of Leeds in our parishes and beyond.



St Michael And All Angels

St Michael and All Angels church is an open and inclusive church in the Liberal Catholic tradition of Church of England and welcomes people of all nationalities and backgrounds.

It has a strong spiritual tradition of prayer and worship, which is centred on the Eucharist or Holy Communion. The church seeks to give people space to both question and to try to understand the meaning of religious faith. This is done in the context of both the Church's worship, and also of people's own life experiences in the present-day world.



St Michaels is a wonderful Gothic building designed by J.L Pearson in 1884. It has fine stained glass, beautiful wrought iron work and a fine organ.

Rev'd Tony Whatmough,
Vicar of St. Michael's Church.
Team Rector of the Headingley Team



Music is important at St Michaels. There is a busy and active choir. They sing a wide variety of music. It has broad range of ages from 6 to 80+. The make up of the choir changes as new students and people arrive at St Michaels but some have been in the choir for over 40 years. The choir enjoys social events together like the annual trip to Scarborough.



We sit within a community in which ~84% is 18- 44 years old. This is very different to both the Diocesan and National averages.

At St Michaels, this manifests itself as a fluid congregation, with many regular but infrequent communicants. We are very pleased that there is an increasing number of families and children attending.



Groups run by St Michaels include:

The Fellowship Group a chance to meet and talk to people mid-week. The **Student & 18+ Group** a social and support group for all young adults. **The Sunday Club** a Sunday morning group for the younger members. **The Stage Group** for anyone interested in singing acting or being part of the crew. **The Green Group** which actively monitors our environmental impact.

Our team ministry All Hallows Leeds

Celebrating life together



All Hallows is an inclusive Christian community, situated in the inner city Hyde Park area of Leeds just west of the city centre, exploring the meaning of faith in the 21st Century.

We are trying to respond to the challenge of Jesus of Nazareth to love God, ourselves and others, exploring the meaning of God's love for all people — women, men, black, white, gay, straight, older, younger, of faith or no faith — and looking to meet the needs of people who feel damaged or marginalised.

With others in the area, we work for justice, reconciliation and to inspire hope. Desmond Tutu's phrase 'the rainbow people of God' underlies our use of the rainbow symbol — coming from a variety of backgrounds, ages and lifestyles, we celebrate and affirm our God-given diversity.

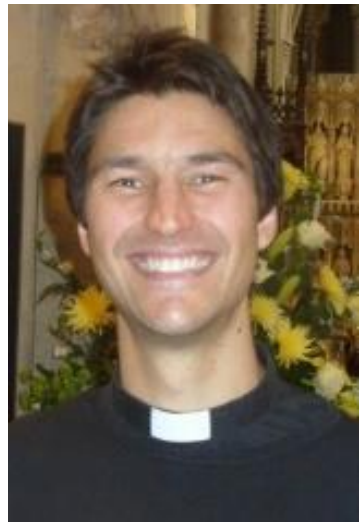
We are a gathered church, living all around Leeds and beyond.

We are a friendly, inclusive Christian community exploring faith through worship, prayer, action and sharing ideas.

Our 10.30 Sunday morning service is open to anyone looking for a Christian community where the most important thing is sharing the love of God.

At All Hallows we emphasise the 'All' — because we believe whoever we are we're all equally loved by God.

At the heart of all we do are the values captured in our diocesan strap line, "Loving, Living and learning".



**Revd Heston
Groenewald**

www.allhallowsleeds.org

Your future? Join us in the Headingley Team Ministry

We would like to meet a vicar with a heart for fellowship, who can help us nurture what we have and build what we need so we can better serve our God, our community, and each other in our lives.

Is St Chad's Far Headingley the next step in your faith journey?



This Brochure only provides a very brief overview of who we are and what we do.

If you would like to find out more, please read our full Parish Profile and explore our [website](#).

If you feel called to serve and lead in our church and our community, we would love to hear from you.

Thank you for taking the time to get to know us.