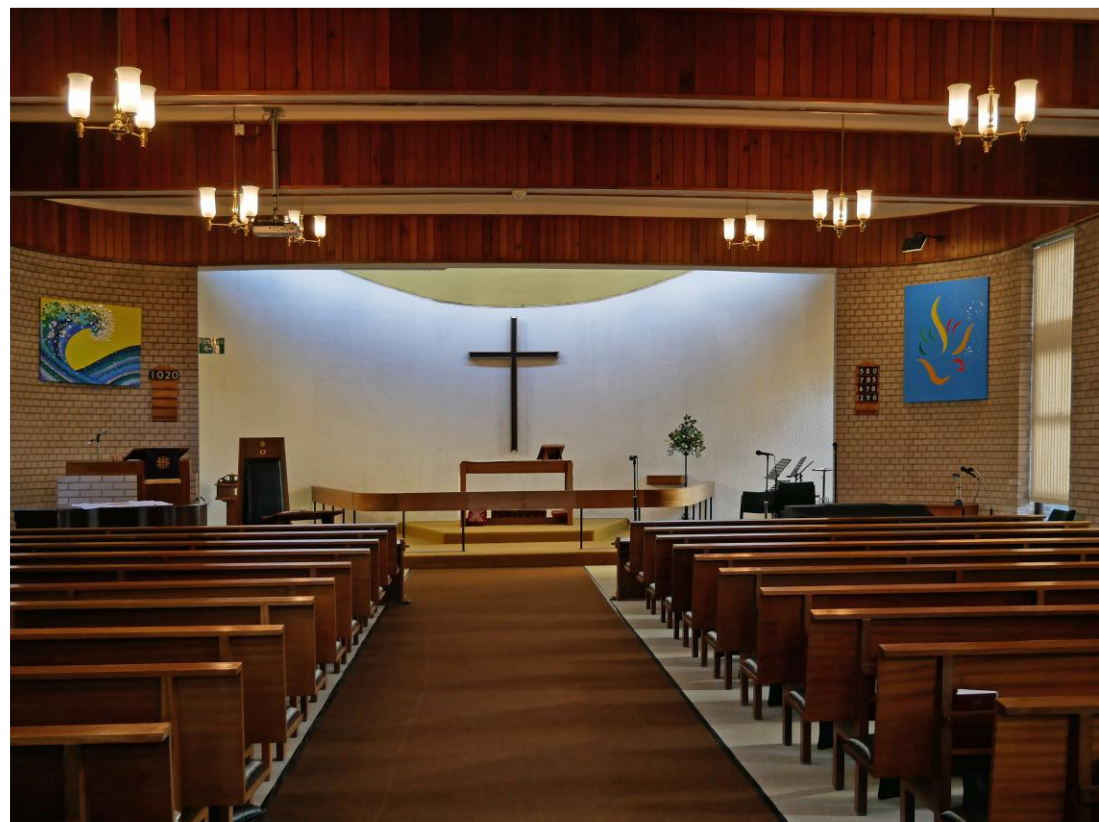


# St John's Leyland



St John's Church  
Leyland Lane,  
Earnshaw Bridge,  
Leyland,  
PR25 1XB  
Tel: 07801 395934



[www.stjohnsleyland.co.uk](http://www.stjohnsleyland.co.uk)  
[www.Facebook.com/StJohnsChurchLeyland](https://www.Facebook.com/StJohnsChurchLeyland)  
Registered Charity No 1175098



# Welcome to St John's Leyland



Thank you for taking an interest in our vacancy. Please read on as we share with you some of the things we are currently doing and our hopes for the future to further God's work in this part of Leyland.

Chris and Russ  
(Churchwardens) on behalf of our PCC



# Welcome to St John's Leyland



## How would we describe ourselves?

St John's is an evangelical church; we take the Bible as the authority for our lives. We are used to flexible ways of worshipping; the ethos is informal and relaxed and we are not at all stuffy. (Our last Vicar didn't wear robes)

We are a welcoming and friendly church and our congregation is willing to try new things and passionate about reaching out to others with the Good News of Jesus.

We place prayer as a high priority and hold a monthly prayer and soup lunch after the morning service and begin each school term with a week of prayer.

We are blessed with a committed core leadership team, including an Associate Minister, two Readers and a full time paid Children's and Families Worker. This team works well together and is supported by many volunteers who also share in ministry alongside the PCC. We also benefit from the active ministry of a retired Vicar.

## We are thankful to God for:

- Bible teaching which is relevant and applicable to everyday life
- Good team work
- Quality and variety of preachers
- Cell groups, people meeting weekly for Bible Study prayer and fellowship
- Being able to consistently pay our parish share and keep the church running, in spite of only being a moderately sized congregation. We are thankful to still be a one church parish
- Weekly activities for everyone from age 0 to 100
- Good relationships with other churches in the area working with our neighbouring Baptist Church and through Churches Together in Leyland



# Where would we like to be in three year's time?

In line with the Blackburn Diocesan Vision 2026 '**Healthy Churches Transforming Communities**' we would like to share with you our hopes for the future.

## **Healthy Churches Transforming Communities**

- To be financially stable, in credit, with sufficient funds to continue to employ a Children's and Families Worker. Taking our responsibilities seriously we take care of one another while ensuring we continue to reach out to those outside the church and to support home and overseas mission.

### **Making disciples of Jesus Christ**

- We seek through our teaching and example to become a growing Christian community based on Biblical teaching following the pattern of the early church.
- We desire to grow in our knowledge of how to live a biblical lifestyle as individuals and as a church family. Practising by example to reach out to young families, young people and all generations to grow a thriving church.
- We long for our Messy Church and Levellers families to be part of the regular worshipping community and those on the fringe or sporadic attenders to have come to or moved on in faith. (Levellers are our midweek children and young people's groups)

### **Being witnesses to Jesus Christ**

- We seek to equip church members to be confident in their faith so they can witness to their family, friends, neighbours and in the local community.
- We want to have moved forward in our plans to reach out to new and recent housing developments in or on the borders of our parish and to local business, through targeted visiting, welcome packs, pop up events or other means.
- We trust we will have continued a pattern of specific mission weekends and events.
- We desire to work towards increased awareness of and commitment to international mission.

### **Growing leaders for Jesus Christ**

- We desire to have leaders who are well taught, mentored and disciplined so that we have a growing sustainable leadership team across all ages.
- We trust we will have continued to recognise and nurture aspiring helpers and leaders through identifying and encouraging individuals to use their gifts and talents for the building up of the church.
- We seek to place an emphasis on growing young leaders who can take the church into the future helping to keep young people involved past the age of 16.

# Our Future Vicar

## What we are offering to our new Vicar

- A lay leadership team that is committed, willing to learn and adapt at the same time as being keen to develop spiritually and work with a Vicar
- An existing vibrant pattern of Cell Groups which is an extension of our church
- Christian based children's and youth work
- Strong links with Northbrook County Primary School
- A thriving monthly Lunch Club
- Causeway Prospects group for adults with learning difficulties
- Messy Church
- WNW (Wednesday Night Worship) a more relaxed midweek service

## What we believe we need help with

- Looking afresh at our Sunday worship pattern and music. It is currently a single service at 10:30 am with children and young people's groups. We are keen to consciously explore ways of attracting young families (16 - 40 age group) to regular Sunday attendance.
- Exploring how to effectively disciple people including 1to1 mentoring.
- Maintaining and developing the children's and youth work.
- Looking with fresh eyes at all areas of our work, to see if we can use our talents more wisely.

## Gifts we would like our new Vicar to bring

### *Essential Qualities*

- Sound Bible teacher whose ministry is grounded in prayer and who is reliant on the Holy Spirit
- Team worker/builder of lay leaders
- Genuinely collaborative – able to lead and work within a team whilst developing leadership gifts in others.
- Has a heart for and actively promotes evangelism
- Pastor/pastoral heart who is a good listener
- Adaptable and willing to try new things
- Good sense of humour
- Approachable/friendly – not high & mighty or formal
- Able to develop and sharpen our sense of vision as a church
- Energetic with the ability to relate to young and old from a variety of backgrounds
- Good communicator - verbal and electronic

### *Desirable Qualities*

- To have real life experience in leadership in the workplace and/or in ministry
- Strategic thinker with the ability to discern
- An encourager
- Passionate about mission – local and worldwide



# The Town of Leyland



## The Parish is set in the town of Leyland

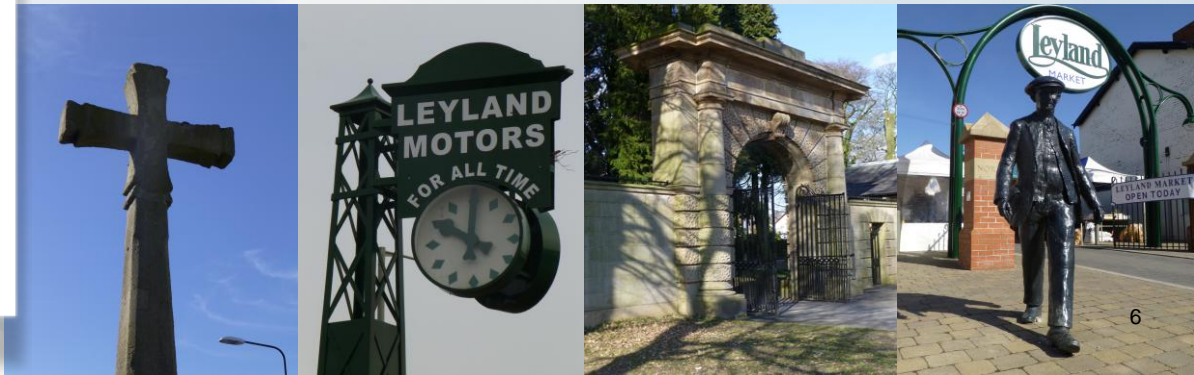
Leyland is a small town in Lancashire located in the South Ribble Borough. Originally Leyland was an industrial town mainly linked to the construction of industrial motor vehicles. Now the Leyland trucks assembly line is located about a mile north of the town, in a neighbouring parish, and employs about 1,000 people. The remaining industry is mainly based in small to medium industrial units of which there are quite a number in the parish.

People living in Leyland have easy access to the M6, M61 and M65 which provide excellent road links to the major employment centres in the north-west. Trains to Preston,

Manchester and Liverpool can be boarded at the railway station and the main west coast mainline can be easily accessed via local trains to Preston. There are good bus routes to Chorley, Preston and beyond. The Lancashire countryside is readily accessed and the Lake District and Yorkshire National Parks are an easy day trip. The town is well served with a variety of supermarkets, banks and building societies.

Leyland's award winning Worden Park, situated in the town, is an amazing asset including a mix of mature woodlands and open meadows. It contains historic buildings, a miniature railway and a well-equipped children's playground.

Leyland Town Centre and Worden Park





# The Parish of St John's

## Our Parish

There are around 8,000 people living in our parish housed in a mix of properties. Approximately one third of the population live on the Broadfield Estate which was built in the late 1940's by the council. It is predominantly semi-detached houses, with a smaller number of flats and terraced houses. Another third lives in semi-detached houses and dormer bungalows built in the 1960's in an area bordering the river Lostock. The remainder live either in more recently built properties, comprising apartments, detached, semi-detached and terraced houses or in small areas of Edwardian terraced houses. Approximately 170 new houses are being constructed in and just outside of the parish boundary with plans for in the order of 800 new homes just outside the parish boundary. We have an informal agreement with the neighbouring parish to welcome them.

There are several areas of open green space within and on the edge of the parish. A short walk from the vicarage

are footpaths following the River Lostock.

The parish is ranked nationally 2,232 out of 12,599 parishes for multiple indices of deprivation, that is in the bottom 20%.

Within the parish are Northbrook County Primary School, Wellfield and Worden High Schools. Adjacent to St John's church is the Golden Hill Pupil Referral unit for children who have been excluded from school.

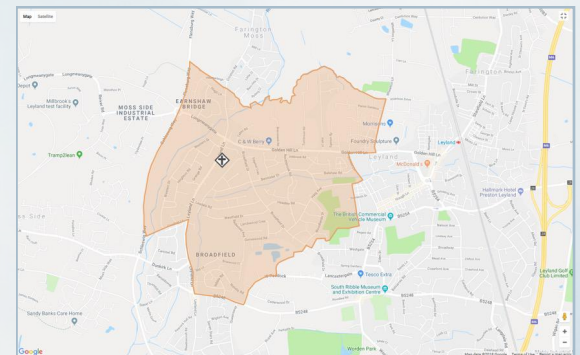
Also located within our parish is Wellfield Church which is governed by a Bishop's Mission Order.



## An aerial view of St John's Parish



## St John's Parish Boundaries





# An Introduction to St John's

## Who's who in our Leadership Team

|                                |                                 |
|--------------------------------|---------------------------------|
| Associate Minister             | Barbara Wilson                  |
| Church Wardens                 | Russ Waring<br>Christine Slater |
| Readers                        | Sue Champness<br>David Spencer  |
| Children's and Families Worker | Barbara Lang                    |
| Retired Vicar                  | David Gaskell                   |
| Treasurer                      | Tracey Johnson                  |
| Safeguarding Officer           | Barbara Wilson                  |
| Data Protection Officer        | Dave Champness                  |
| Gift Aid Secretary             |                                 |

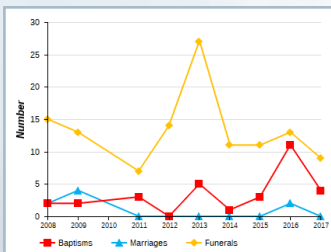
## Our Finances

We are very grateful for the fact that in recent years we have been able to fund our annual running costs, comprising Parish Share of £45,000 and other costs of approximately £17,000, out of our unrestricted income, without having to use our unrestricted reserves, which have been stable at around £20,000. For the first time for several years, however, we had to dip into reserves in 2017 to fund a small deficit of £1,500. Our running costs include very little discretionary spend and with all costs set to rise in 2018, together with a likely increase in building maintenance costs, the challenge over the next few years will be to prevent a trend of cumulative deficits eroding our reserves. 93% of our annual unrestricted income comes from the congregation and related Gift Aid receipts, and many give generously, but we need to find ways of increasing the number of committed givers and the level of giving if we are to remain financially sustainable.

The congregation also gives generously to several specific projects, including subsidising costs for summer camps, various mission appeals and the funding of our Children's and Families Worker. The latter costs just under £21,000 a year and we have been grateful for external funding of £14,000 per year for the last 3 years, but these grants are due to finish in August 2018. We have sufficient funds pledged to retain the position until Easter 2019 and are therefore now seeking alternative sources of external funding to enable us to continue to fund the post beyond then, as we believe that God is calling us to continue this work in the parish.

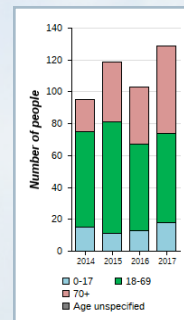
## Church Electoral Roll

We have 88 names registered on the roll with an age range of approximately 25 to 90. Of these, 40 are resident in the parish and the other 48 living outside the parish boundary.



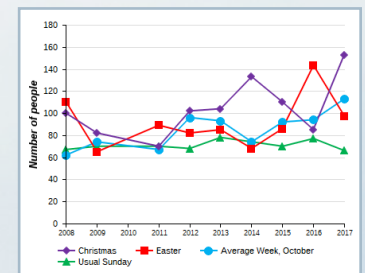
## Baptisms, marriages and funerals

In 2017 there were 4 Baptisms, 9 funerals and no weddings



## Attendance

Our Average weekly attendance on a Sunday morning is 63 adults and 3 young people under 16. Approximately 12 adults and one young person under 16 attend WNW (Wednesday Night Worship) and 5 adults usually attend Wednesday Morning Holy Communion





# Our Church Buildings

## St John's Church and Church Hall



St John's church was built in 1968 as a daughter church to St Andrew's Leyland. St John's became a parish in 1991. The church building adjoins the church hall, which is over 100 years old and began life as a school. To the rear of the hall is the church kitchen and lounge areas. The church and vicarage are on a combined plot (an aerial view of the site is included on page 10). The main church building can seat approximately 150 people. In 2017 the church vestry and toilet were refurbished. The new accommodation comprises a toilet and a kitchen / vestry which adjoins the worship area, all of which are disabled friendly.

The church buildings are a hive of activity throughout each day. They are used by our many and varied church groups. To the rear of the church hall is an extensive garden secured by fencing. Part of this garden belongs to the vicarage but at the moment it is used as a shared facility with the church.

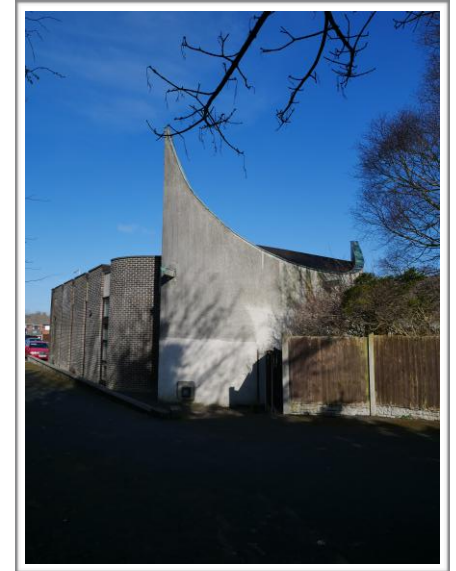
The most recent Quinquennial Inspection was conducted in 2017. Its findings show that the church is generally in good condition save for a few areas of external brickwork that need re-pointing including the front boundary wall. The full height glazed section of the church on both sides of the east end are the original single glazed aluminium frames. These frames need some additional support. This work is being addressed. The glass in these frames needs replacing with safety glass.

The main issue in the church hall is the decoration above the dado rail. The corridor and rear porch area also need redecoration.

Quote from the quinquennial report:

*"The church is obviously well maintained by a team of dedicated people which is an absolute credit to them"*

A Community Public Access Defibrillator was purchased, with the support of the community, and was installed on the church hall wall in the summer of 2017.



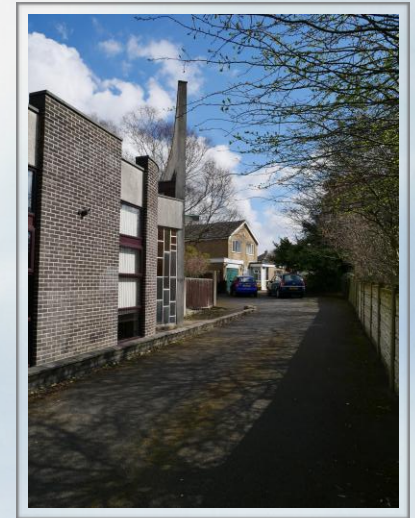


# St John's Vicarage

## St John's Vicarage

The vicarage is located within the church grounds and is accessed via a short drive running from the church car park along the side of the church to the vicarage.

It was built in 1975 and has been extended several times. The downstairs accommodation comprises a large lounge, dining room, kitchen, utility room, study, shower room and a bedroom. Upstairs there are three bedrooms (one en-suite) and a family bathroom. There is an integral garage and a small shed in the garden. There is an area of the garden designated as belonging to the vicarage. At present the whole garden is used as a shared facility with the church, this arrangement will be reviewed with any future vicar.



- |                    |                      |
|--------------------|----------------------|
| 1 St John's Church | 3 Lounge             |
| 2 Church Hall      | 4 St John's Vicarage |



# Our Services

## Current Service Pattern

|           |               |   |
|-----------|---------------|---|
| Sunday    | 10:30am       | <p>The first Sunday of the month is usually Holy Communion. (Common Worship)</p> <p>The remaining Sunday mornings are morning worship (Service of the Word).</p> <p>Once a term the morning service takes the form of 'Explore Together'. This service encourages the exploration of the Bible using different learning preferences. (For further details please see evangelistic opportunities section)</p> <p>During the morning service there are groups available for children. At the moment we have in the order of 4 or 5 young people aged between 11 and 16. The number of children under 11 attending is very variable.</p> |
| Wednesday | 10:00am       | Holy Communion  |
| Wednesday | 8:30pm        | <p>WNW (Wednesday Night Worship)</p> <p>An informal service with the opportunity to sing new worship songs, to explore a bible passage and pray together.</p>   |
| Saturday  | 3:00 – 5:30pm | Messy Church – 3 <sup>rd</sup> Saturday of the month (see page 16 for further details)  |

## Music

The music is led by a small group generally comprising keyboard, violin and 3 or 4 singers. Songs are drawn from a mixture of Mission Praise and more contemporary songs projected on screen.

The music at WNW (Wednesday Night Worship) is contemporary and we use prerecorded music videos.

## Prayer

We actively encourage all our meetings to include a time of prayer. A number of people meet for fifteen minutes before each Sunday morning service to commit our worship to God, this is open to all. At the start of every new school term we have a week focusing on prayer. We take the opportunity as a church to pray for the work at St John's and for God's work in other areas of this country and the world. Each month we produce a prayer diary which aids our prayer for each other, the world and the work at St John's.

Our church motto for 2018 is 'Devote yourselves to prayer, being watchful and thankful' Col 4 v2. To encourage people to join in corporate prayer we moved from a pattern of monthly Friday evening prayer meetings to begin holding a soup and prayer lunch on the first Sunday of the month. This has encouraged several new people to get involved and is a format that seems to be working well.

# Evangelistic Opportunities

## Cell groups

Our cell groups are very vibrant. There are currently 7 groups meeting regularly with approximately 56 people attending. Based on our regular weekly attenders this means over 70% are a member of a cell group, meeting to pray and study the Bible together. The groups meet on various days, times and locations and are generally in people's homes.

The person preaching on Sunday morning usually provides a written cell outline to help the groups further explore the bible passage. The cell pattern we follow incorporates prayer evenings and occasional social events.

On a rota basis, cell groups assist with Sunday morning services. The group welcomes people into church, provides people to read the Bible, lead the intercessions/prayer time and serve tea, coffee and biscuits (sometimes cake) after the service. Prior to the Sunday service this group will also have cleaned the church.

## Children's and Young Peoples work

We have employed a full-time Children's and Family Worker since 2014, the funding for this post was provided by donations from outside trusts, the Diocesan Parish Vision Fund and from St John's congregation. The impact this post has had on our young people and families has been invaluable and so we are actively engaged in securing funding to extend this post into the future.

The Children's and Families Worker, aided by a ministry trainee, together with a large team of volunteers from the congregation provide children's outreach from the toddler age group to teenagers giving us regular contact with approximately 100 children from 80 families. We are seeking to recruit a new ministry trainee from September 2018.

## School's work

We are very privileged to be able to work with Northbrook County Primary School. The previous Vicar served as a governor to the school.

Each week a group of about four members of our congregation take a weekly assembly using 'Open The Book'. Open the Book is part of the Bible Society and is a three-year rolling programme of themed and dramatised Bible stories which are presented by our volunteers in an accessible and enjoyable way. Not only is this an outreach but it also assists the school in meeting its statutory collective worship obligations.

One lunch time each week 4 members of St John's run a sewing/craft group. Also, on a weekly basis, 6 members of the congregation go into school to hear children read.

The congregation of St John's also support the school's PTA by helping at their Christmas and summer fairs and on other occasions when requested by the school.

## Baptism

For infants and children, we offer Thanksgiving Services or Baptism. These services always take place within the morning service.

When a request for Baptism is made the Vicar or Associate Minister makes an initial visit to the family. Arrangements are made for a preparation course which is usually led by the Vicar, Associate Minister and/or Children's and Families Worker as appropriate. A variety of material is used and chosen with the particular families in mind. The course is usually at least 2 or 3 sessions.

Ongoing contact is maintained by sending birthday and Baptism anniversary cards.

We long for more of our Baptism families and the many other families we are in contact with, through our different activities, to become part of the regular worshipping community at St John's and to come to or move on in faith.



# What Happens between Sundays?

|           |  |   |
|-----------|--|---|
| Monday    | 9:15 - 12:15<br>7:30 - 9:00  | Happy Hands<br>Gentle Exercise  |
| Tuesday   | 9:15 - 12:15<br>6:00 - 7:30  | Happy Hands<br>Level 2  |
| Wednesday | 9:15 - 12:15<br>9:15 - 11:15<br>10:00<br>1:00<br>1:30 - 3:30<br>6:30 - 8:15<br>8:00 for 8:30 | Happy Hands<br>Chatterbox<br>Holy Communion<br>Lunch Club (once per month)<br>CAMEO (twice per month)<br>Drop-in<br>WNW (Wednesday Night Worship) |
| Thursday  | 9:15 - 12:15<br>9:15 - 11:15<br>1:30 - 3:00<br>5:30 - 6.45<br>7:15 - 9:00                    | Happy Hands<br>Chatterbox<br>Acorns<br>Level 1<br>Level 3   |
| Friday    | 9:15 - 12:15   | Happy Hands   |
| Saturday  | 2:00 - 4:00<br>3:00 - 5:30<br>6:00 - 8:00  | Craft n Natter (twice per month)<br>Messy Church (once per month)<br>Whatever (once per month)  |

# Regular Activities for under 5's and carers



**Acorns** – New from January 2018

Meets: Thursday Afternoon

Time: 1:30 – 3:00

## **Aims and objectives:**

To provide a meeting place for carers and children to interact safely in a Christian environment and learn about the Bible.

**Attendance:** Average 10 - 14 children accompanied by their parents or carers

**Activities:** include crafts, Bible story, songs, snacks



## **Chatterbox** - Parent/carer and Toddler group

Meets: Wednesday and Thursday Mornings

Time: 9:15 – 11:15

## **Aims and objectives:**

We seek to create a welcoming, safe and caring Christian environment for all the children and parents/carers that attend.

Age Group: birth to age 3 with their parents/carers

**Attendance:** Average 14 children accompanied by their parents or carers

**Activities:** include a simple activity time (for example with painting, sticking or playdough) singing nursery rhymes and action songs, snack



## **Happy Hands** - Pre School Playgroup

For over 40 years, St John's members have served their community through this playgroup. However, with the manager and another long-serving member of staff due to retire in summer 2018, this group is facing a period of significant uncertainty and change.

Currently Meets: Monday to Friday

Time: 9:15 – 12:15

## **Aims and objectives:**

To provide excellent preschool childcare, making learning fun in a safe, stimulating environment.

**Attendance:** Average 10 children per session

**Activities:** A wide range of child and adult led activities which cover all areas of the Early Years Foundation Stage. The emphasis is always on learning through play.



# Regular Activities for under 18's



## Levellers

Level 1 For infant school aged children (Year R-Y2)

Level 2 For junior school aged children (Y3 – Y6)

Level 3 For young people (Y7 - Y9)

### Meet:

Level 1 Thursday 5:30 - 6:45

Level 2 Tuesday 6:00 - 7:30

Level 3 Thursday 7:15 - 9:00

### Aims and objectives:

Our Levellers groups are for any children and young people who would like to come and join us. We seek to share the Christian faith by word and example.

### Average Attendance:

Level 1 10

Level 2 9 -14

Level 3 12

**Activities:** All of our groups have games, crafts, a short Bible time & snacks. We often take trips out and organise special events.

Each year, young people are encouraged to attend Christian summer camps run by Urban Saints which the congregation help to subsidise.

## Drop-In

Meets: Wednesday Evening

Time: 6:30 - 8:15

**Who's it for:** Young people in years 10 - 12

### Activities:

There is very little structure to this group and the young people tend to sit, chat and eat and each week there is an activity for those who want. The young people help to plan the sessions and activities they have chosen include board games, electronic games, karaoke, baking, crafts and film nights. There is also a discussion time when the young people look at issues which are relevant to them and explore what the Bible says about these issues and how to respond to them.

## Whatever

Is a youth group run specifically for children and young people with a physical or learning disability. It is an opportunity for them to mix with adults and other children.

Meets: 2<sup>nd</sup> Saturday of the month

Time: 6:00 - 8:00

**Attendance:** 6-14 young people with varying disabilities

### Activities:

Members take part in crafts, play table tennis and a variety of games which we have adapted so all the children and young people can participate.

# Messy Church



## Messy Church

Meets: 3<sup>rd</sup> Saturday Afternoon of the month

Time: 3:00 to 5:30

**Age Group:** Any age

**Attendance:** Attendance varies, we have had as many as 61 down to 35. There is always a good mix of adults and children. During the last 12 months we have had 10 regular families (23 children) and 6 families who attend less regularly (12 children) attending messy Church. There are also 7 families who have visited us once or twice.

## Activities

We offer about 8 different activities, crafts and quizzes all linked to the Bible theme for the day. We set these out in the hall and near the beginning the story is told simply. After about an hour, everyone moves into the church building for a time of celebration when we sing some simple songs, think more about the story or theme and have some kind of interactive prayer time. After this, we return to the hall which has magically been transformed into our dining room where we enjoy a 2 course cooked meal together while talking about the theme of the day.





# Regular Activities for 18's and over



## **CAMEO** (Come And Meet Each Other)

Meets: 2<sup>nd</sup> and 4<sup>th</sup> Wednesday of the month

Time: 1:30 - 3:30

**Attendance:** About 20 - the majority of whom are not regular worshippers.

### **Aims and objectives:**

The aim of this group is in the title. It provides an opportunity for people to **Come And Meet Each Other** in a welcoming, caring Christian environment.

### **Activities:**

Include quizzes, board games, films, trips out and food.

## **Causeway**

Is an accredited Prospects group for individuals with learning difficulties meeting in the Church lounge. They use Makaton sign language and utilise puppets in their worship. Each year they lead the worship at one of our Sunday morning services, usually on Ability Sunday or the Nativity Service.

Meets: Last Sunday afternoon of the month

**Attendance:** Approximately 25

## **Men's Group**

Our men's group meets for a variety of activities during the year. All men are welcome to come along and the activities include Hotpot suppers, Tom's legendary breakfast, bowling and games nights including Perudo.

## **Craft n Natter**

Meets: 2<sup>nd</sup> and 4<sup>th</sup> Saturday of the month

Time: 2:00 - 4:00

**Attendance:** A loyal group of approximately 4 with others who drop in and out during the year.

### **Aims and objectives:**

To provide a friendly informal environment for anyone to attend for craft activities or conversation.

### **Activities:**

Each person brings their own craft or one to share, some just come along for a brew and a chat.

# Regular Activities for 18's and over

## Broadfield House

Meets: Last Friday of the month

Time: 11:00

**Who's it for:** The residents of the Care home

### Activities:

A short service with four or five songs, prayers and a brief message.



## Gentle Exercise

Meets: Monday Evening

Time: 7:30 - 9:00

**Who's it for:** Any one wishing to participate

### Activities:

Gentle exercises to music which are conducted sitting down. Quiz, a brew and lots of laughter

## Coffee Club

Meets: 3<sup>rd</sup> Friday afternoon of the month

Time: 2:00 - 4:00

We host a monthly coffee club run by local councillors to help combat loneliness in our local community. The club generously helped to raise funds for the Defibrillator. Some of our regular church community also attend this group.

## Lunch Club

Meets: 1st Wednesday of the month

Time: 12:50 for 1:00

**Who's it for:** Those at home at lunch time  
– usually retired

**Attendance:** Average 27

### Aims and objectives:

To provide a lovely lunch and an opportunity for people to meet in a Christian environment. It is an ideal group to invite friends to.

### Activities:

We serve a 2 course freshly prepared meal with tea or coffee to follow. After the meal we enjoy a quiz and the 'Word for Today'.

Thank you for taking time to read our profile. We hope you enjoyed reading it as much as we enjoyed putting it together. We pray that this will help you to discern whether God is calling you to St John's.