



CHEVENING CHURCH

CHEVENING PARISH PROFILE



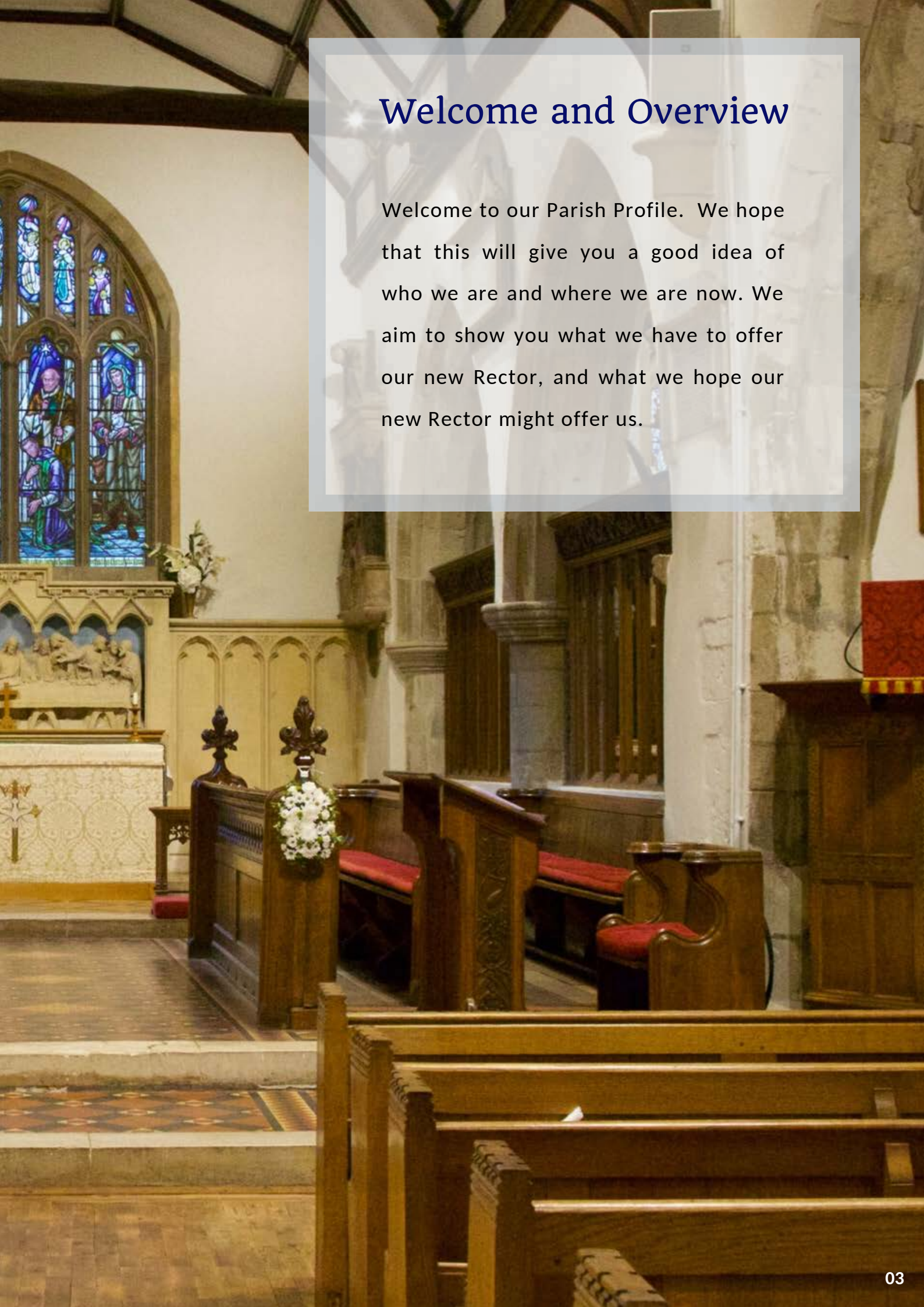
Table of Contents

03	Welcome and Overview
04	What We Offer
05	Our Hopes and Dreams
06	The New Rector
08	Church Video
09	Where We Are
10	What We Are
11	Who We Are
12	Our Services
14	Discipleship
15	Children's and Youth Work
17	Chevening (St Botolph's) CE Primary School
19	Prayer
19	Pastoral Work
20	Mission Near and Far Beyond the Parish
21	Growing In and Into The Community
22	Trusteeships
22	Financial Overview
24	Communication
26	Appendix 1: Called Together
27	Appendix 2: Church Remodelling Plans
30	Appendix 3: Maps
33	Appendix 4: Dashboard
34	Appendix 5: The Rectory

This Profile was created before the arrival of the Coronavirus (COVID-19), which has severely affected all churches and challenged us all to adapt both worship and our working with and in community in new ways. In the main, it reflects the "Old Normal". We look forward to working with our new Rector to meet the challenges of the "New Normal".

Welcome and Overview

Welcome to our Parish Profile. We hope that this will give you a good idea of who we are and where we are now. We aim to show you what we have to offer our new Rector, and what we hope our new Rector might offer us.





What We Offer

- A church with a strong tradition of good biblical and theological teaching, inspiring us to follow and communicate the teachings and example of Jesus.
- A culture of mutual love, welcome, hospitality and strong fellowship (modelled, we would hope, on the “koinonia” of Acts 2). See **Particular Challenges** (p.7) for our response to Coronavirus.
- A heart for mission and evangelism within our community and beyond.
- People who are eager for God and his kingdom.
- A culture of regular prayer, as well as 24 hour prayer vigils offering imaginative support for the Archbishop’s “Thy Kingdom Come” initiative.
- A children’s ministry which grew impressively but has more recently slowed. Excellent links with our local church school (see p.15-18)
- A wide range of worship styles (CW, well-established informal services and BCP Morning Prayer).
- A varied congregation: some who cherish the best of tradition, some who both cherish tradition and embrace new ideas and the best of modern worship, and some who have come to church more recently and typically embrace fresh expressions. All love God.
- An established programme of Alpha, Marriage and Restored Lives courses.
- An embryonic discipleship culture, encouraged in some year round home groups, with greater numbers taking part in Lent courses.
- The potential to mobilise a significant pool of talent under a visionary leader.
- Buildings all fit for purpose: St Botolph’s church at Chevening; the Chapel of the Good Shepherd in Chipstead; a comfortable, modern 5-bedroom Rectory (see Appendix 5); and a house adjoining the Parish Hall which could house a curate or youth worker (at present let).



- Sound finances, and a track record of successful fund-raising, but there is a need to find ways of increasing regular giving, especially given the effect on income post church closure in the light of Coronavirus.
- First class support from our Parish Administrator; a lively PCC and four-person warden team; and a committed and enthusiastic team of lay helpers.
- Comprehensive communication through social media as well as traditional written formats.
- A solid foundation of just three Rectors in the last four decades, each staying ten years or more, each developing the work of their predecessor.
- Good local schools at primary and secondary level, and outstandingly beautiful countryside on the doorstep.

Our Hopes and Dreams

- To grow a church in which all ages are nurtured and valued and enabled to deepen their faith.
- To grow in discipleship and stewardship, not to stand still.
- To have a stronger mission focus.
- To grow the already strong culture of prayer.
- To listen more attentively to the promptings of the Spirit.
- To extend our pastoral care and reach out imaginatively to groups such as the elderly, the housebound or others who might feel marginalised, a need accentuated in the light of Coronavirus.
- When possible, to have a curate or ordinand working alongside the Rector, and to encourage interns, all of whom have contributed significantly to parish life in recent years (though none are now in post).
- To recruit a youth worker.



In the light of the above, we are praying for a new Rector who will

- Work with the PCC and the congregation to develop a strong set of Vision and Values which will include a respect for our traditions and encouragement to consider more contemporary forms of worship and different ways of 'being church'.
- Have a heart for mission and evangelism.
- Be a shepherd who can bring closer the different age groups within our church, and help us to find ways of including the elderly and vulnerable as fully as possible in church life and worship given the likely constraints as we emerge from lockdown.
- Be a dynamic leader with a servant heart, able to relate to and encourage people of all ages and levels of faith to participate in church and community life; in short, an enabler.
- Be a strategic thinker and collaborative organiser, sensitively discerning how best to release our potential for growth and live out our vision.
- Energetically encourage discipleship at all ages and stages within our congregation.
- Build on the work already in hand for children and young people, with a particular focus on teenagers.
- Be a gifted preacher and teacher.
- Bring the Gospel alive, reaching out to young and old, convinced and sceptical, building everyone up for service in today's challenging world.
- Have an ability to communicate with those who have no existing relationship with, or even framework of understanding of, God.

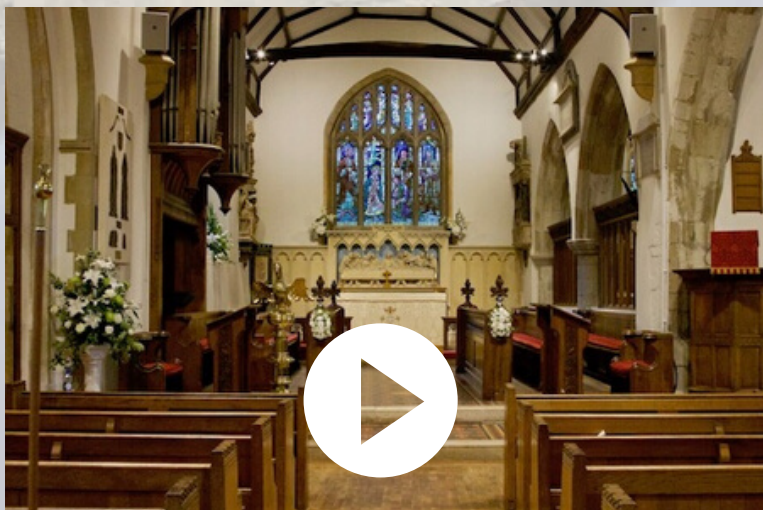


- Revitalise our worship, maintaining the best of traditional liturgy and music whilst encouraging the development and acceptance of new forms of worship.
- Actively promote the Rochester Diocesan initiative “Called Together” (see Appendix 1).
- Lead us in pursuing the plans for adapting the main church building (see Appendix 2).
- Be compassionate, a good listener, and committed to the pastoral needs of the community.
- Be prayerful, holy spirit-led, and encouraging in the use of the gifts of the holy spirit in appropriate ways/settings.
- Go on retreat, take time out to be refreshed, and be able to maintain a sensible work/life balance.
- Enjoy being visible in the local community, actively seeking opportunities for our church to make wider connections.
- Seek to enhance the already strong partnership with our church school.
- Be fun and create a joyful environment.

Particular Challenges

- Whilst many are “comfortable” in their faith, there is a need for more passion and openness to a fresh working of the Spirit.
- A congregation with busy lives and limited time to offer church and community.
- Making our church community even more welcoming and accessible.
- Continuing to grow a young people’s ministry that is relevant, attractive and transformative given contemporary youth culture.
- Keeping a congregation of diverse ages and preferences as one united church, valuing each others’ contribution.

These challenges, and our special heritage, are emphasised in a series of filmed interviews with some of our congregation, ranging from the most senior to one of our youngest.



To view the video, please click on the image above and enter the password: Grace.

Alternatively copy the URL: <https://vimeo.com/372240587> into your browser and enter the password: Grace.

We believe we are on the
threshold of something new
that the Holy Spirit is leading
us towards: could you be
the person God is calling to
lead us through this
transformation and beyond?

Credit: Special thanks to
Chris Whitehead for
allowing us to include the
drone images of our parish
and church.



Where We Are

The ancient parish of Chevening stretches from the North Downs, just north-west of Sevenoaks, southwards to the Weald. The bulk of the population is centred in the north of the parish, in the villages of Chipstead, Bessels Green, and Chevening. The position of the church, Anglo-Saxon in origin, is at the junction of the west-east Winchester to Canterbury Pilgrims' Way and the south-north Old Rye Road, along which fish from the south coast was brought to London. The 18th century Chevening House with its parkland, part of the mediaeval manor of Chevening, lies close to the church, and now provides the country retreat for the Foreign Secretary.

The parish is a popular place to live (reflected in its house prices), principally because of its good transport connections (close to the M25; within a 30 minute train journey of London from Sevenoaks); its proximity to good schools at primary and secondary level; the amenity of Chipstead Lake and a surrounding area of Outstanding Natural Beauty; and good pubs/restaurants.

Chevening Ecclesiastical Parish is in the Sevenoaks Deanery and is at the western end of the Diocese of Rochester. (see Appendix 3: Maps).



What We Are

Under the umbrella of Chevening Church we have:

ST BOTOLPH'S CHURCH

at Chevening, Anglo-Saxon in origin with 13th, 14th and 16th century additions, and extensively reordered at the beginning of the 20th century. Currently we are pursuing plans to reorder parts of the church to provide new spaces for different kinds of worship (see Appendix 2).

THE CHAPEL OF THE GOOD SHEPHERD

at Chipstead, at one end of the (modernised) 19th century Parish Hall.

THE PARISH HALL

although an unconsecrated building, is used for larger informal services and for events like Harvest Supper and the Maundy Thursday Fellowship Meal. One room is used as the **Church Office**. When not needed for church purposes the Hall is available for hire to village societies and children's parties, for example.

Attached to the Parish Hall is a substantial 4-bedroomed house. Originally intended for an on-site caretaker, it has been used by a St Mellitus ordinand and his family in recent times, but otherwise is let commercially to a suitable tenant, and provides a significant income stream used mainly to maintain the Chapel, Parish Hall, the Church Office and the house itself.



Who We Are

Appendix 4 contains the 2018 “dashboard”, from which can be seen we have:

- + A population of 3731.
- + A relatively high percentage of children attending, but numbers have fallen in 2019 (average attendance 2019: 88 adults and 19 children).
- + A slight tailing off of numbers against a high in 2010 - 12, when we had a full-time curate.
- + A healthy rise over the last 6 year Electoral Roll cycle from 2013 to 2018, though again numbers have fallen in 2019 to 260 (some 44% live outside the parish, and several people within the parish worship elsewhere in the Sevenoaks area or at other places of worship within the parish).

The present congregation is mixed across all ages, from nonagenarians to babes in arms.



Our Services

With our mixed age congregation we aim to provide services to suit all tastes. Our current monthly service pattern is:

EVERY SUNDAY:

8am said CW Holy Communion in the Chapel at Chipstead.

1ST AND 3RD SUNDAYS:

10.30am sung Holy Communion combining traditional and more modern liturgy.

2ND SUNDAY:



10.30am sung BCP Morning Prayer.

5pm Informal worship (which we are calling "Doing Life with God, Doing Life Together") in the Parish Hall.

4TH SUNDAY:

10.30am All Age service, with the worship band.

5TH SUNDAY:

10.30am sung CW Morning Prayer, with prayers for healing at the altar rail after the service.

During lockdown we have run the monthly 5pm Informal Evening Service on Zoom, and as many morning services as we can put together on You Tube.

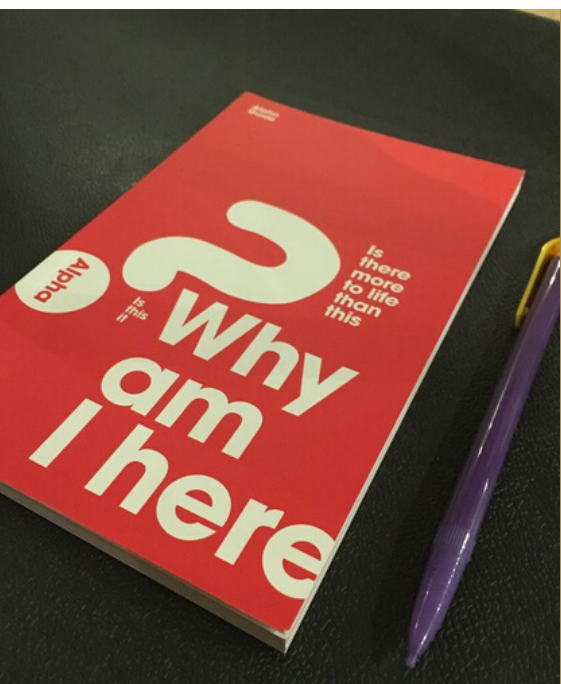
It is the tradition for the Rector and choir to robe for all services other than the 4th Sunday and the informal evening service.

The Festivals of Christmas, Easter, Remembrance, Harvest and the Patronal Festival are celebrated in appropriate style, utilising our talented flower arrangers, bell-ringers, singers and musicians. There are also six school services a year, in which the school plays a central role. All these services attract good numbers. Attendances at Christmas 2019 were up at 420, and our Easter 2020 morning online service attracted nearly 400 views, including from US and New Zealand. The Zoom Evening Service on Easter Day was attended by a further 50 approximately.



Special family occasions are celebrated throughout the year, with baptisms conducted as part of the main 10.30am service. These, with weddings and funerals, are important for the opportunity they provide to show what a welcoming and loving community we are.





Discipleship

At present only a minority participate in year round Home Groups, in which we have the potential to help each other grow in faith, fellowship and be equipped for mission.

More groups meet in Lent, and there is the potential to build on our willingness to engage with a well-chosen book, and continue meeting all year round.

We are making an effort to increase the take up of home groups for bible study as well as fellowship and prayer support during lockdown.

We run Alpha regularly and have also run the Marriage and Restored Lives courses. A natural migration from these would be into a Home Group.

We have recently been running a residential parish weekend away at The Oasts, a Christian Conference Centre in Sussex, and a core group has attended the HTB Leadership conferences.



The Challenge

We recognise a need to be more intentional about equipping lay leaders and encouraging discipleship at all ages and stages within our congregation, and are looking to our new Rector to provide a lead, and help identify and release the full potential which already exists to resource this vital priority.

Children's and Youth Work

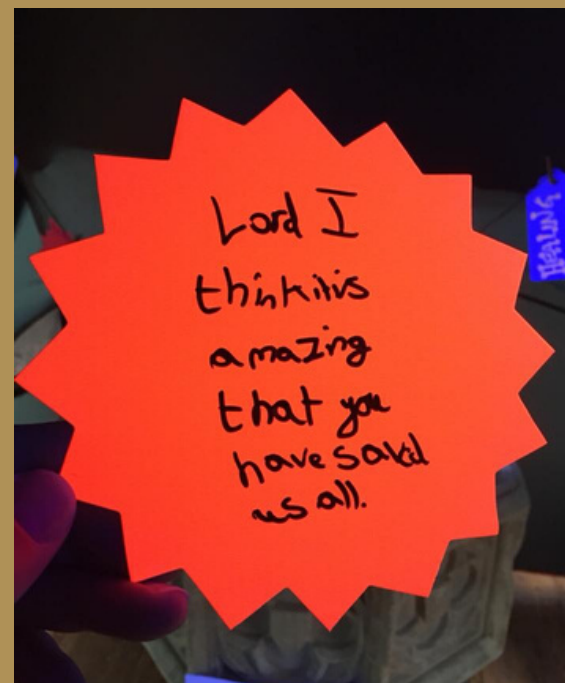
Not many churches can offer Sunday worship and teaching in a double-decker bus and a stable! But the problem of accommodating children's groups while their parents are worshipping at a church with (as yet) no space for separate activities, and the Parish Hall a good mile away, forced us to be creative.

Result – the donation of a retired bus (christened Bertie), equipped with AV and facilities for refreshments, for children between 5 and 9 (Sunday Club). Those between 10 and 13 (Quest) meet in the stables of Chevening House, and the age group 14 to 18 (Kinect) meet in the Rectory.

As from March 2020, Bertie has reached the end of his life of service, and our children's groups will have to be imaginative once again in how best to accommodate the Bertie age group.

All the children's groups meet on the 1st and 3rd Sundays. On the 2nd and 4th Sundays the children can attend the informal early evening service (with food provided) and the informal morning All Age service respectively. A crèche is provided in a nearby house during the main Sunday service, and "Toddler Time" meets midweek in the Parish Hall once a month.

We collaborate with our local church primary school, who are often visibly present during our services, as well as nourishing a strong Christian ethic within the school. The Headteacher's thoughts on how much our church and the work of its Rector is valued by the school appears in the next section.



We are also fortunate to have a number of good Christian secondary schools within travelling distance of the parish: Bennett Memorial, St Gregory's and Trinity (a recently established and very successful free school, the foundation of which was spearheaded by our last Rector). These are the secondary schools of choice for many of our young people.

The Challenge

There is much to be thankful for in what we are already able to offer children, but we believe there should be more support for this area of the church's work, especially with teenagers. To this end, the PCC have voted to recruit a youth worker, albeit deferring this until the arrival of our new Rector, to enhance our focus on this vital area of work.





Chevening (St Botolph's) CE Primary School

"Together we learn, believe and achieve"

The Headteacher, Karen Minnis, writes:

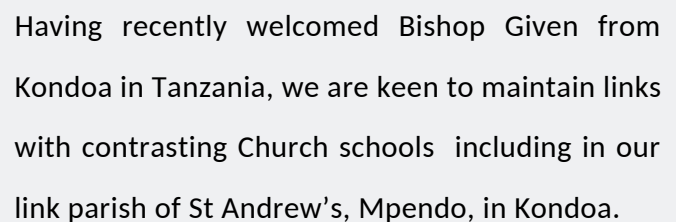
Chevening (St Botolph's) CE Primary is a one form entry Voluntary Aided School that has served the Parish for some 200 years, with an enduring golden thread of Christian values linking the heart of St Botolph's Church to the ethos of the school. The school was recognised as Outstanding by SIAMS in 2017 and achieved Good in its OFSTED inspection in November 2019. The whole school family remain committed to the pursuit of excellence in our service to Chevening, Chipstead and the wider Sevenoaks area.

Our Christian values are Love, Faith, Respect, Honesty, Courage, Compassion, Forgiveness and Perseverance. These are alive throughout the school and underpin everything we strive for. Children are, of course, the heart of our school community. We would like the new Rector to help our children, staff, parents and Governors further explore and understand these values in their daily lives. Supporting the school through active prayer, Christian example, leading termly School Sunday services and end of term services, plus offering counsel and regular involvement would ensure the new Rector plays an active and valued Christian role in the school community, with specific responsibilities as Trustee and Governor.

Many of the school's volunteers and Governors are linked to St Botolph's Church. The school has a hardworking and dedicated staff team, working alongside a supportive governing body and Parent Teacher Association, with a shared focus of continually improving the school. Our parent body is friendly, community-minded, enjoying opportunities to socialise and support the school. Recently Alpha and Lent courses offered by the church for school parents have been well received.



Daily Acts of Worship are led by staff, visiting Christian Church leaders/workers and we would welcome the new Rector to join in our school family activities as frequently as possible. The children look forward to seeing their Rector and enjoy humour and lively debate, along with Bible teaching and active prayer opportunities.



www.chevening.kent.sch.uk



Prayer

We are a praying community. We meet to pray before the main Sunday service, and a prayer team is available afterwards for individual prayer. Every 5th Sunday special prayers for healing are offered at the communion rail. There is also a monthly midweek parish prayer meeting.

In recent times we have extended our emphasis on prayer to fill the church with a series of prayer stations to provide a backing for well-supported 24 hour prayer vigils – at Pentecost in support of the Archbishop of Canterbury's "Thy Kingdom Come" prayer initiative; and at Advent, when we prayerfully contemplate Christ's coming.

For the 2020 Prayer Vigil, we are adapting the format during lockdown to include in-home prayer stations, and a series of Zoom prayer meetings around the prayer station themes.



Pastoral Work

The parish contains a Leonard Cheshire Home for the severely disabled, and the Rivermere Care Home, with a dementia wing. Regular visits are made to both, and Communion offered. Visits to the housebound, the sick and those in hospital, and the bereaved are also made. The Rector is helped in these important tasks by a small team of volunteers.



Mission Near and Far Beyond the Parish

The Diocese of Rochester is linked to the Diocese of Kondoa in Tanzania, and St Botolph's is linked in particular to the church of St Andrew's, Mpendo, with which close ties have been forged. Exchange visits have been made, and Chevening school has become a vital partner in strengthening the links.

Closer to home, the Bishop of Rochester's initiative in pairing or twinning parishes within the Diocese has been embraced by Chevening, and we have started to develop what we hope will be a fruitful relationship with the parish of Frindsbury in the north of the Diocese.

We actively support the work of our mission partners including the London City Mission, Ruth Radley and the work she has set up in South Sudan for CMS, and the charity Tools with a Mission. There is scope to enlarge our focus.

TOOLS WANTED



Chevening Church partners in mission with 'Tools with a Mission'

A Christian mission sending tools to the developing world. We are collecting used tools in the church office from June 4th to 11th. These tools will then be refurbished, sorted into trade kits and sent across the world to help better peoples lives.

CAN YOU HELP? Do you have unused tools that could be put to good use?

TOOL DROP OFF AT CHEVENING CHURCH OFFICE

Growing In and Into The Community

There is a strong community culture within the parish, with plenty of opportunities for the Rector to be involved: a drink and a chat in the pub; conversations on the school playground with parents; stopping by at children's football or tennis coaching on a Saturday morning; attending a WI meeting once in a while; joining in the very successful over-65s village coffee morning.



Some younger (and very fit!) men (not all churchgoers but all up for praying and acts of worship when on their long walks!) – known as the Chevening Pilgrims – have been persuaded to get together and undertake a long-distance walk each year, starting with the Pilgrims' Way to Canterbury in 2011. Since then the group has tackled amongst others, the Camino del Ingles in Spain, Hadrian's Wall and the North Norfolk Coastal Path, and has raised considerable sums for charity. The Chevening Pilgrims are a key group for setting out marquees, stalls etc at the annual Open Days at Chevening House and other events, where the "Ladies of St Botolph's" provide wonderful home-made tea and cakes, and raise funds for charity in the process.

There is a thriving Baptist church in the parish, and a Unitarian church which serves the wider Sevenoaks area. All three churches get together at Christmas to support our local Hospice with a carol service and lighting of the Christmas Tree on the Chipstead village green. We also support, especially at Christmas, the Loaves and Fishes Food Bank organised by one of the Sevenoaks churches.

The Challenge

To build fruitfully on the strong sense of community by missional evangelism suited to the context, so that active participation in church life is seen as a natural consequence of living in our parish.

Trusteeships etc

The Rector is ex officio a Trustee of the Chipstead Chapel Charity; a Trustee and Governor of Chevening (St Botolph's) CE Primary School; and a Trustee of the Wyndham-Strode Charity (a small local charity administered by the Rector and churchwardens).

Financial Overview

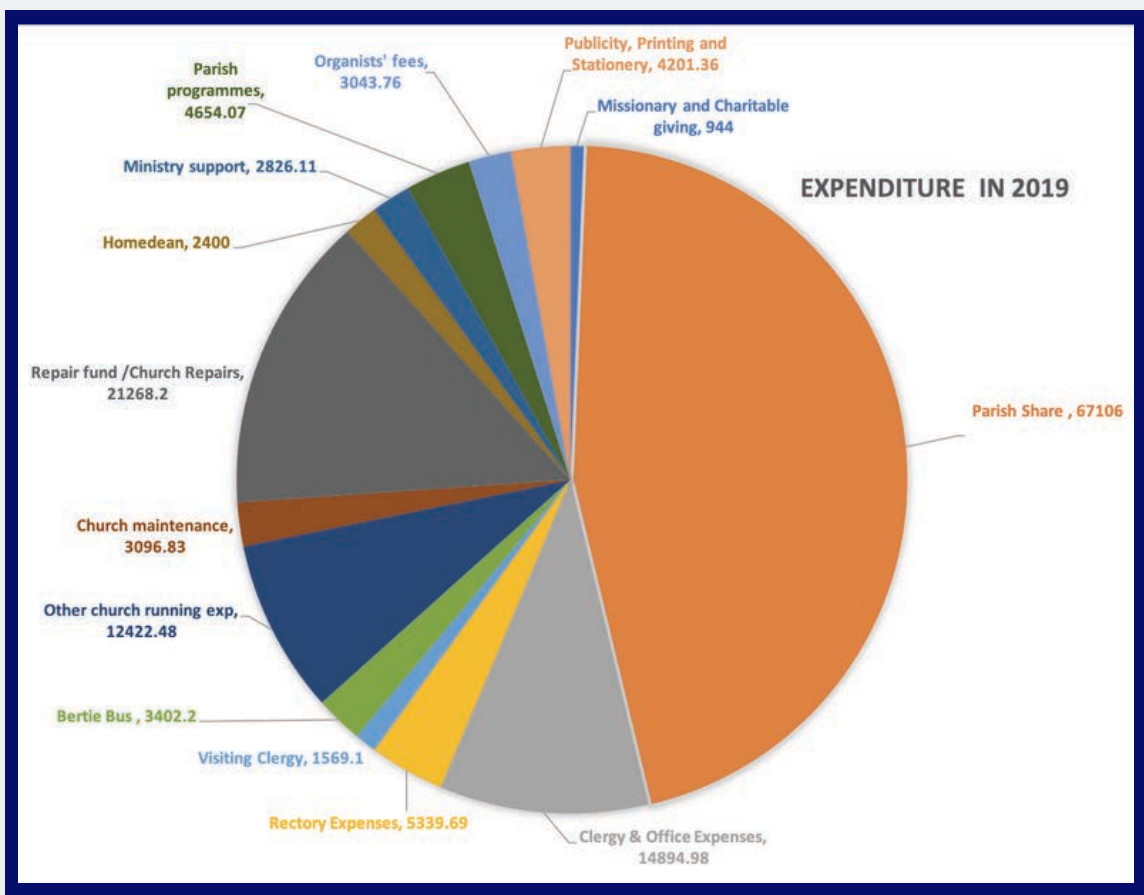
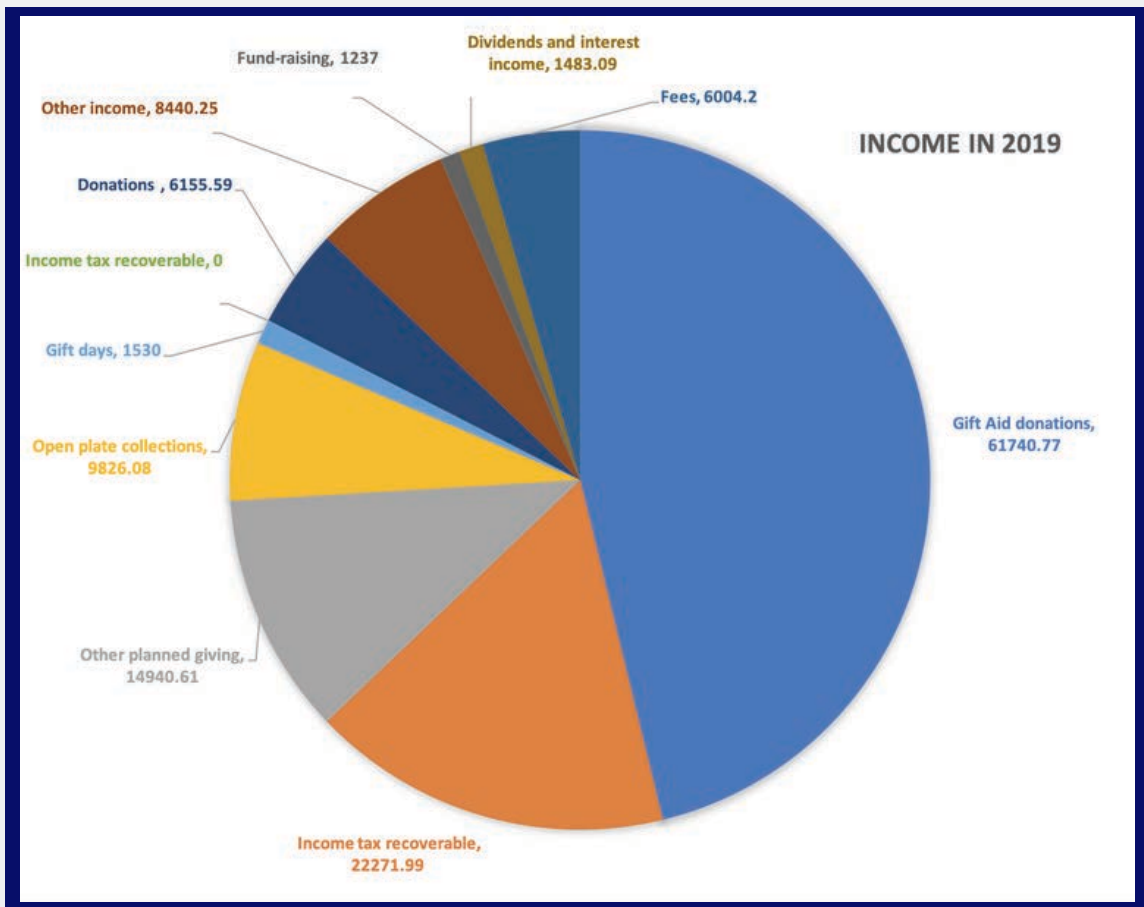
We are in a prosperous part of West Kent, and historically have found fund-raising relatively straightforward. We encourage regular committed giving by church members, as well as generous “top-up” giving on special occasions such as Harvest, when our collection goes to our link parish in Mpendo. We are also trialling app-based giving for those who have a mobile phone but no cash in the pocket!

Full detail on income and expenditure are summarised opposite on page 23 and is available in our latest Annual Report (2019).

[Click here to view our latest Annual Report](#)

or visit our website: <https://www.cheveningchurch.org/getinvolved.htm> and select 'Chevening Parochial Church Council' from the side menu.

Financial Overview



Communication

We are conscious of the need to communicate regularly in a wide variety of ways.



Our website (www.cheveningchurch.org) is kept up to date on a weekly basis and importantly is mobile compatible. Visit the [Chevening Church website](#).



We produce:

- An informative monthly church newsletter for the congregation
- A magazine-style "Chevening Times" once a quarter, which can add "colour" to what we are engaged in at different times
- A current piece on church activities for the local village magazine "Chevening News"



We have a Facebook page:

<https://www.facebook.com/cheveningchurch/>



[/cheveningchurch/](#)



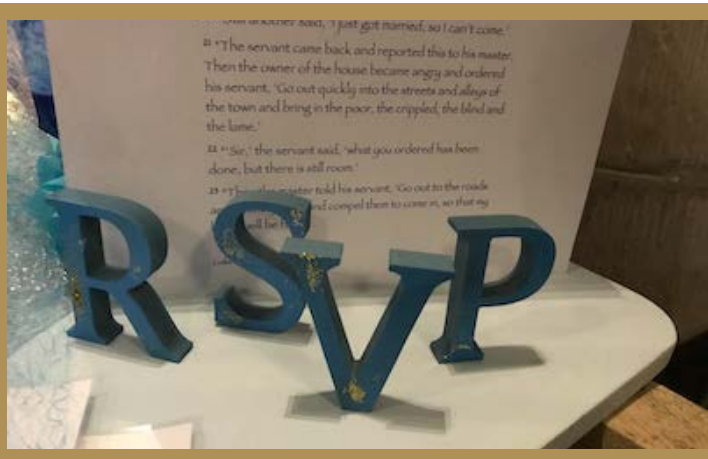
We can reach school parents through the children's bookbags.



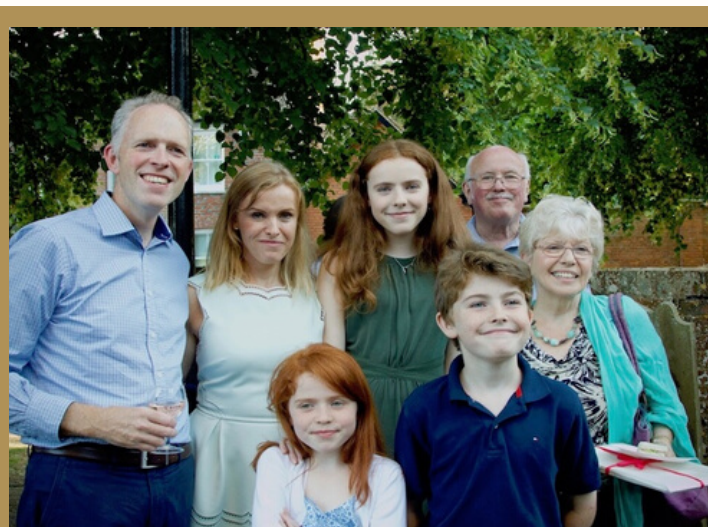
Two members of the congregation are local parish councillors, which provides useful cross-communication.



Above all we aim to ensure there is an awareness of the church's presence in the community, as much as the school or the pub. It is not "them and us". It is simply "us". This comes from an outward-facing culture.



We offer a warm
welcome to whoever
God sends us!



Appendix 1

Called Together - the vision for the Diocese of Rochester

Launched in November 2017, Called Together is the strategic vision for the Diocese of Rochester. The vision and core themes were discerned following extensive engagement across the Diocese, seeking to hear what God is calling us to in this place and time. The three themes - Growing Disciples; Enriching our Communities; and Resourcing our Mission and Ministry - seek to give focus and direction to our priorities over the next five years. Every parish in the Diocese is invited to support the shared vision in a way which fits their local context, working towards the same goals.

Called Together marks the beginning of an exciting journey for the Diocese of Rochester. As Bishop James said, "This is a significant moment for us as a Christian community. It has implications not just for how we move forward and connect as a Church family, but how we engage and support people across our communities."

More information can be found on the Diocesan website.

[Click here to go to the Diocesan website](http://www.rochester.anglican.org/called-together)

or copy the URL is: www.rochester.anglican.org/called-together

Appendix 2

St Botolph's Church Remodelling Plans

We are here as a church to proclaim Jesus Christ, to invite people to hear God's word, engage with worship and experience Christ's love for them through communal worship and fellowship.

We have inherited from previous generations a beautiful building, and over the years the space we worship God in has been adapted and shaped according to the liturgy, worship styles and cultures of the day.

In recent years as our congregation has grown, we have become more conscious that there is not enough space to accommodate all our needs and wishes. In the light of this our Architect was employed in 2013 to come up with a feasibility study for an extension to the building.

This study led to a meeting with the DAC and various heritage bodies. The feedback from the latter groups was a strong encouragement to look at changing the internal layout, before proceeding with a possible north side extension, ensuring that all the internal space was being utilised to its full potential.

All the ideas we've had have sprung from prayerful consideration and consultation with the congregation.

In recent years the PCC has pressed on with trying to make the church as comfortable and user friendly as possible. We have polished the floors, decorated the outside loo, added pew pads, installed external lighting to the churchyard, upgraded the internal lighting, removed window grilles, and completed a full AV upgrade.

We are excited about the future and feel these current modest changes will make a big difference to us as a worshipping community.

Appendix 2

St Botolph's Church Remodelling Plans

Zone 1 - The Choir Area

Our plans for this area include taking out the central choir pew on each side of the aisle and pushing the modesty panel back.

This creates much more space in the chancel for the worship band and for flexible service options.

Zone2 - The South Aisle

To replace the south aisle pews with attractive wooden chairs, move the font to the front of the south aisle, and to create an area suitable for baptism services.

Zone 3 - The West End of the Church

To restore our tower balcony which was removed in the Victorian era, create a quiet room below, and to provide tea and coffee making facilities.

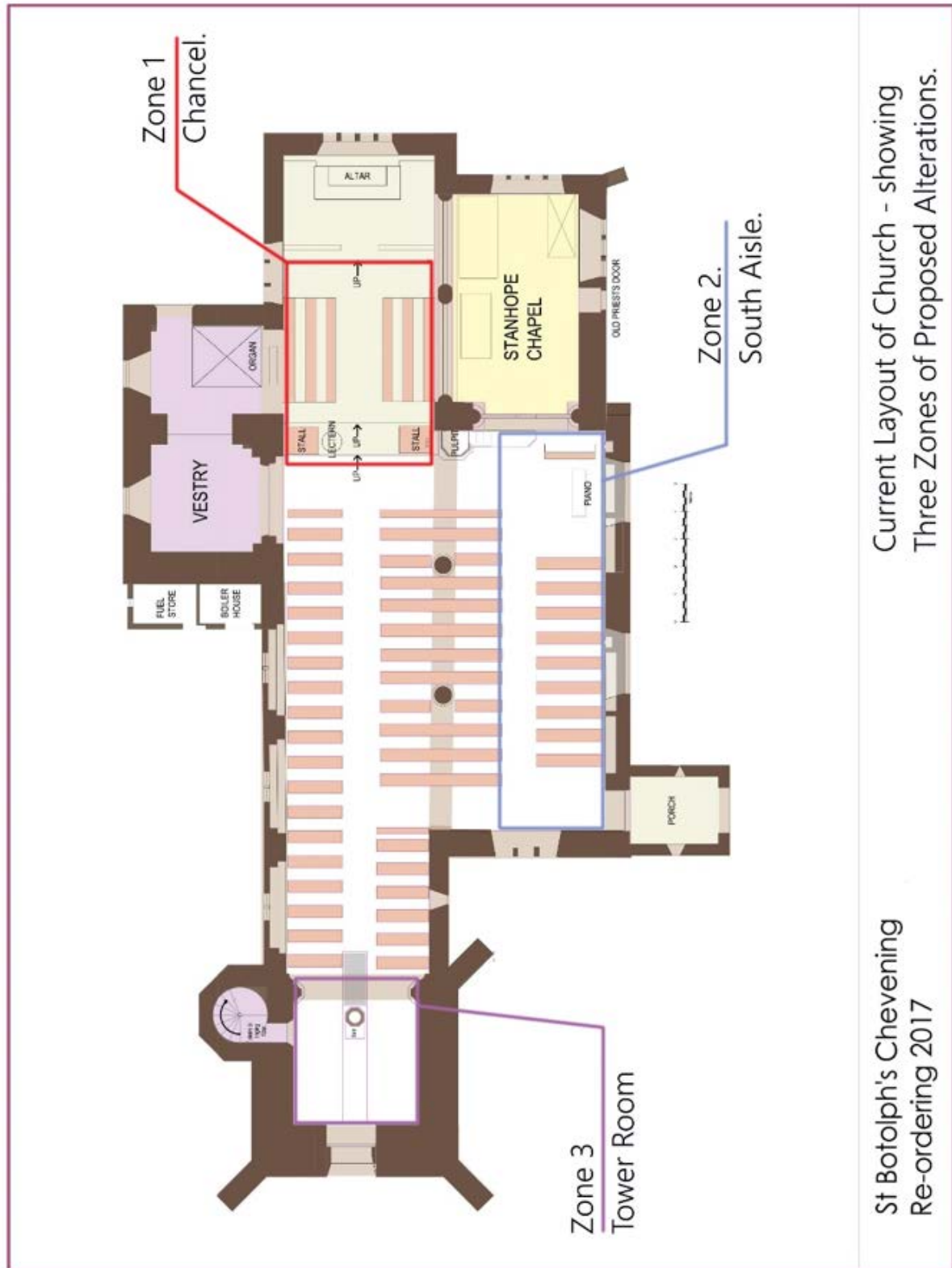
A diagram showing these three areas of the church is set out on the next page.

We believe that the PCC have come up with a measured, useful and appropriate scheme. It enhances our existing space without detracting from the important historical features of St Botolph's. The plans for each zone bring little irreversible change and as our Architect reminded us on a recent church tour 'the only constant is change'.

If we are to maintain the spiritual and numerical growth of our congregation then these are changes that we need to make to our building.

Appendix 2

St Botolph's Church Remodelling Plans



Appendix 3

Maps

1. The Parish of Chevening



Appendix 3

Maps

2. Sevenoaks area



Chevening St Botolph's Church

Maps

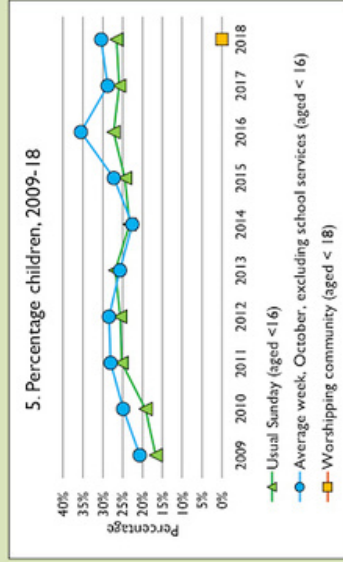
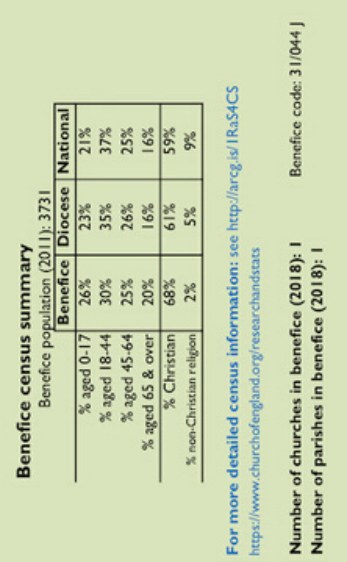
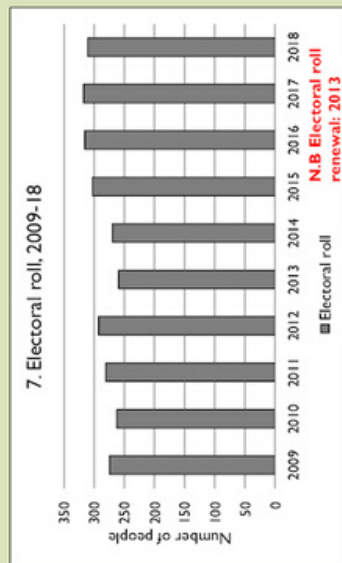
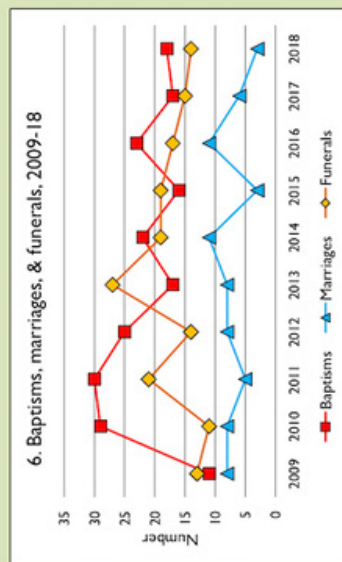
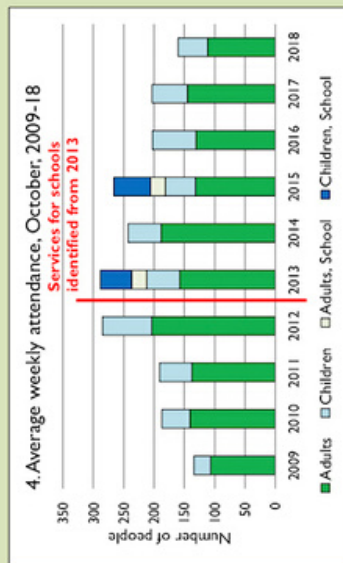
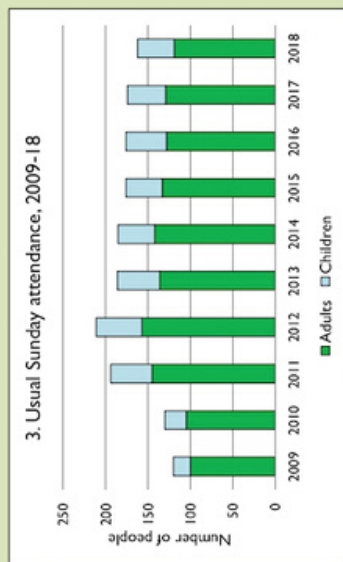
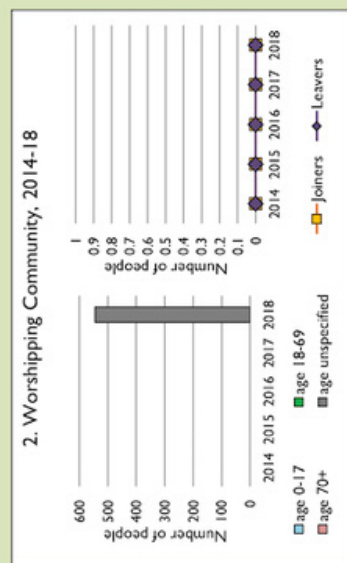
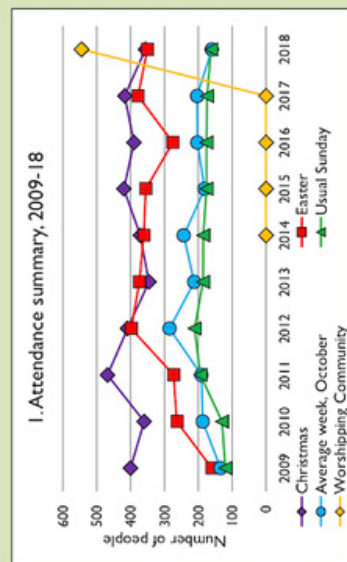


32

Appendix 4

Dashboard

Dashboard for the benefice of Chevening in the Deanery of SEVENOAKS



This dashboard contains figures as submitted by churches currently in the benefice.
Attendance statistics: taken from annual Statistics for Mission returns.
Average weekly attendance: attendance at Sunday and midweek church services & fresh expressions in October. Figs 1 & 5 do not include attendance at services for schools.
Easter: Easter Eve & Easter Day; Christmas: Christmas Eve & Christmas Day.
Baptisms: all baptisms & thanksgivings.
Marriages: marriages and services of prayer & dedication after civil marriages.
Funerals: those held in church & at crematoria/cemeteries.
Worshipping Community information has been collected from 2012 onwards.
Census data: taken from the 2011 national Census.
Census statistics have been mapped onto benefice boundaries so are approximations.
For more information, see: <https://www.churchofengland.org/researchandstats>

Follow us on Twitter:
@cofstats

THE CHURCH OF ENGLAND
Research and Statistics

Variations in attendance from year to year may be the result of changes in the number of churches that submitted returns, or changes in parish/benefice structure.
Number of churches included in returns: 2009 2; 2010 2; 2011 1; 2012 2; 2013 1; 2014 1; 2015 1; 2016 1; 2017 1; 2018 1.
Produced by the Research and Statistics Unit, Church House, Great Smith Street, London SW1P 3AZ. Date of production: 3/10/19
Every effort has been made to ensure that data are reliable. We would be grateful to be notified of any significant errors or omissions by email to statistics.unit@churchofengland.org

Appendix 5

The Rectory



Chevening Rectory is a detached modern (built in the 1980s), comfortable home with five bedrooms situated behind the Parish Hall complex in Chipstead.

The accommodation comprises a kitchen/diner, separate dining room, sitting room with an open fire and patio doors leading to a generous sized garden, a large downstairs study and a cloakroom which can be shut off from the rest of the downstairs. Upstairs there are five bedrooms, including a master bedroom with en-suite, a family bath/shower room and a separate loo.

The property benefits from a double garage with two parking spaces for residents cars together with plenty of space for visitors cars to the front of the property. The house faces north-west and benefits from a southerly aspect at the rear of the property.

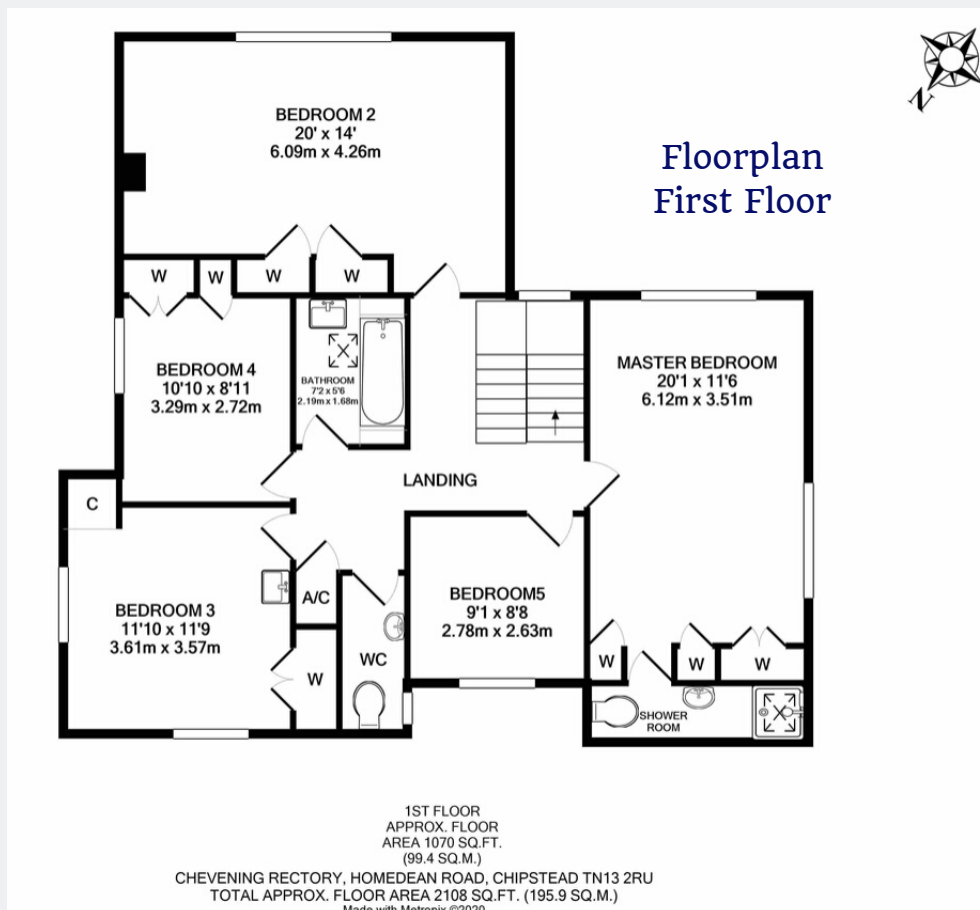
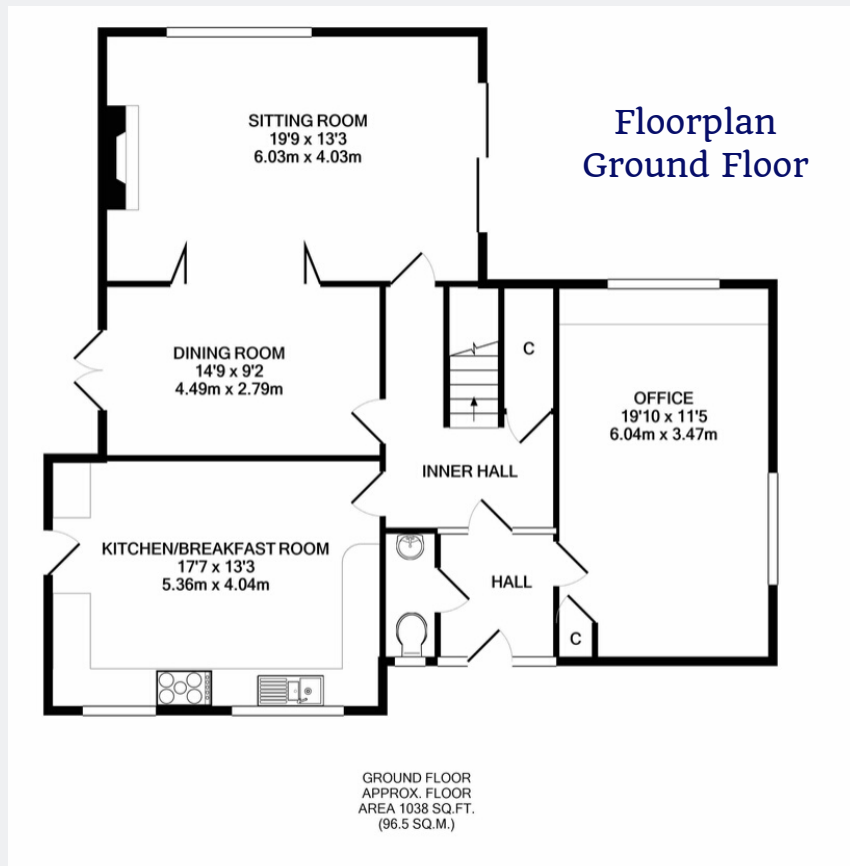


It is situated extremely close to the Parish Office which is within the Parish Hall together with the Chapel of the Good Shepherd and is a short walk from St Botolph's Church Primary School and other village amenities.

Typical energy running costs per month for gas and electricity combined are £130 and the property has an EPC rating in band D of 68.

Appendix 5

The Rectory





Chevening St Botolph's Church 2020
