

Parish Profile

Walton Team Ministry

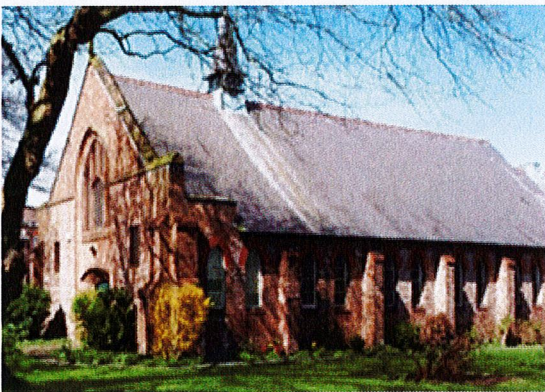


St Aidan's, St Mary's, St Nathanael's
Walton-on-the-Hill

'Working together
spreading God's love'

When the Team Rector of the Walton Team retired, the PCC and Diocese agreed to appoint an Interim Minister, as assistant curate, with the remit to resolve the known issues of financial governance and explore any unknown ones. The 'lull' in parish life brought about by Covid gave a period of time where the IM, Rev Fiona Pennie, could review the many bank accounts and charities linked 'ex-officio' to the office of Team Rector. The full extent of the tangled financial web has been revealed with many of the extra bank accounts closed and the church wardens and PCC having accurate financial information for the first time in many years; there remain some outstanding issues the resolution of which depend upon the new Rector being in post.

The three current churches in the Walton Team have been working together for about 30 years. During this time each church has developed their own way of spreading the Gospel through Mission and Ministry.



St Aidan's Church



St Mary's Church



St Nathanael's Church

We recognise our community is changing and we want our churches to be safe, inclusive and welcoming places where we can continue the build on the work that is being carried out in our parishes. The WTM has good relationships with other local churches as we work together in our area to transform lives and we are looking forward to being part of the newly formed bigger deanery of North Liverpool and Walton.

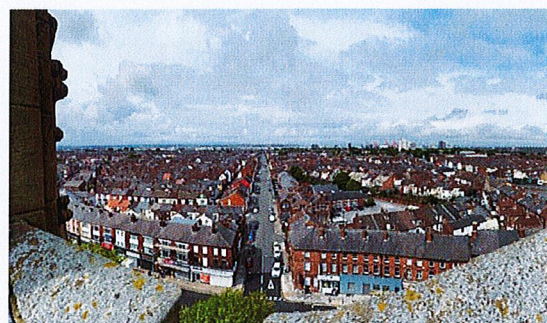
The pandemic impacted significantly on our churches and along with others we are still recovering. The challenge of Covid and churches being locked down showed us just how deeply rooted our relationships with each other were, with each congregation keeping in touch through regular phone calls. New initiatives of a Prayer WhatsApp group, YouTube services and the ability to listen in on Twilio kept us connected through worship. We all had to adapt and change but it also helped us recognise how important our church family was and how together we could *hold on to our vision to love God, love one another and love our community.*

OUR PRIORITIES

Community

Our community of Walton-on-the-Hill, is very complex. We straddle two wards of Liverpool City council, County and Warbreck and have 21115 residents.

<https://liverpool.gov.uk/media/9948/county.pdf>
<https://liverpool.gov.uk/media/9966/warbreck.pdf>



The Church Urban Fund ranks the parish as the 101st most deprived parish in the Church of England. The key headlines are high child and working age poverty and a large number of single parent households. There is a low number of people living in social housing, but there are a high number living in poor private rented housing.
<https://cuf.org.uk/parish/220079>

Within our parish boundary we have the largest secondary school in the Local Authority area and 3 primary schools, a special school, care homes, 1 hospital, 2 supermarkets, industry and of course loads of small independent traders.

Schools

We have strong links with the Church of England VC school Arnot St Mary's, the Rector being an ex-officio foundation Governor. The Interim Minister (IM) has been delivering weekly assemblies and working closely with the school's ethos team. Together with the Head Teacher Mrs Roper we are working towards renewing the Church School Partnership Award.

We have had close links with Alsop High School, having being part of several 'lockdown' films working closely with Mr Peter Bull Marketing and Community Manager.



<https://youtu.be/rGBIIMEzH5s>
<https://youtu.be/u7uCfP9oT5Q>
<https://youtu.be/rhKWb7UpjPA>

We have historic links with Florence Melly school through a previous Team Vicar and current parishioner on the board of Governors

Children and Families

Our Butterfly group is a church based organisation for girls age 5 and upwards based at St Aidans. The girls take great delight in telling us their news before going on to a craft activity followed by games. They are very talented group and they make displays for Mother's Day and Harvest to decorate the Church. They lead the worship on these special days; they choose the hymns, people to do the readings and they contribute their own prayers, many go on to be confirmed.



We have a small but enthusiastic Cub group based at the Old Grammar School and a very longstanding

Mum's and Tots group which meets in the Cornerstone, under the experience eye of Mrs Ann Gandy MBE, who has run the group for over 60 years.

Those on the margins. This includes the lonely, the hungry and those seeking asylum. We have at various times held afternoon teas, quizzes, bingo, lunches and English lessons. You can come to knit and natter or craft and chat and there are monthly shows for the elderly and people suffering from dementia and alzheimers. We are looking to build on this work to reach out to more folk in need in our community.

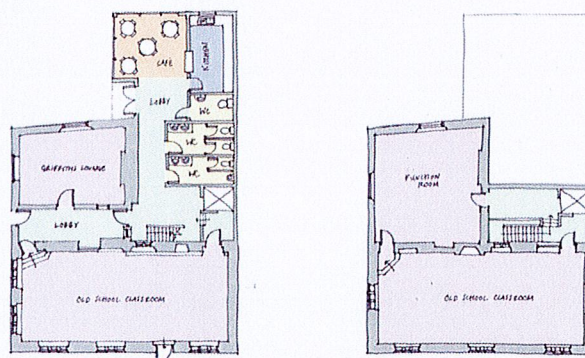


Opening Doors Project team



We are working closely with the Opening Doors Project a charity which works under licence in St Nathanael's promoting positive mental health in families and building community resilience.

Friends of the Historic Parish of Walton, is a recently formed organization currently going through Charity registration with the aim of supporting the preservation of the historic buildings on the site of Walton Parish Church.



Architectural plans for renovating the Old Grammar School

The Rector in the Community

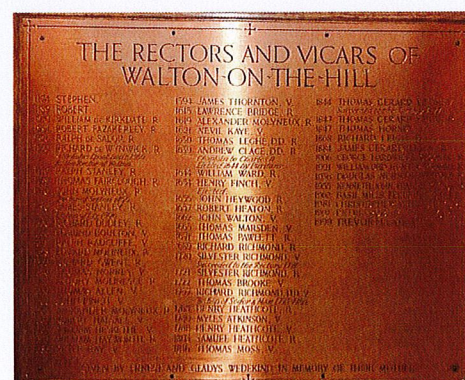
The priest of Walton-on-the-Hill has been a key part of the community, the role dates back to Stephen in 1154. It currently has ex-officio links with *Thomas Berrie Charity*, linking several longstanding charities set up to feed the poor of the local community. Various *School linked Charities* which we are hoping to bring together under one charity name.

Walton Youth and Community Project. The Rector is ex-officio the Chair of the Trustees and members of the congregation sit on the board. The project was started by the Rector and Church members in the 1960's to provide non-denominational youth work for the young people of Walton. It has continued to change and evolve over the intervening years but still maintains close contacts with church folk.

The Walton Community and Enterprise Partnership is housed in what was the old St Mary's School. It is a registered Charity with Rector and Church Wardens as ex-officio trustees. The purpose of the charity is provide a space for the local



community to use and whilst Covid closed much of that activity we are beginning to see the hall being used again. It also offers affordable accommodation for small businesses from the area with only one month's tenancy agreement on each side. Presently there is a Sewing Alteration Business, a Dance Studio, Artisan Cake Maker, and other small businesses occupying the building. It has become a real asset to the area where many small firms struggle to make ends meet when starting up.



The role of Rector also has links with The County Road Regeneration Scheme, hosted by Liverpool City Council and works closely with our local police community team based at Walton Lane and other community

Church

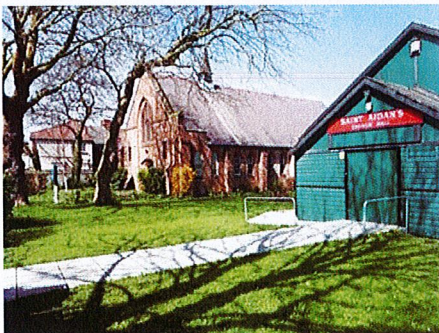
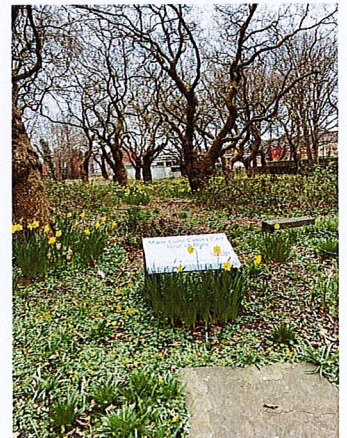
St Mary the Virgin, Walton on the Hill was originally the Parish Church of the West Derby Hundred covering an area which was to become the city of Liverpool. It is therefore the first Church of Liverpool! A Church on this site in Walton is mentioned in the Domesday Book. It has been rebuilt several times with the oldest part of the Church being the west tower which was built in 1829-32. Most of the Church apart from the tower was rebuilt between after being destroyed in the 1941 blitz, being reconsecrated in 1953. Evidence of earlier worship include a Saxon Cross thought to date from around 8th Century and the font from 900CE. St. Aidan's was opened in June 1909. It was built as one of several daughter churches to St. Mary's and is the only one remaining open, St Nathanael's was also built in 1909, designed by local Architect Frank Rivington, we believe it is the last of his Churches left standing in Liverpool.

Buildings



As well as our 3 Church buildings, we also have one Church hall and an 'Old Grammar School' which dates back to the early 1600's which we believe is the 5th oldest building still standing in Liverpool.

St Mary's, the churchyard wall and the OGS are grade 2 listed, with a closed Churchyard and wall being maintained by the local council. There is a small Garden of Remembrance which is available for the interment of ashes.



St Aidan's has a large Community Hall, with a fully refurbished kitchen, toilet facilities and disabled access which is in daily use by church and community, bringing in much needed income. We have a dedicated maintenance and garden team looking after our church, hall and grounds.

St Nathanael's has over the last year undergone a significant amount of refurbishment including updating the heating system, installation of a security system and refurbishment of the kitchen to a standard which means we can cater for up to 200 people. The flexible seating means that using a licence with the Opening Doors charity we can run events as diverse as chair based exercise, craft club and mums and tots group as well as our weekly Sunday Services. The fence has been updated and the gardens are currently being reinstated by a happy band of volunteers from both the Church and the charity.



All the Churches have recently had their Quinquennial reports.

People

Parish Administrator Jo is to be found in the Cornerstone building where she combines her role as Day Manager with Parish Administrator 4 days per week. The parish office is also located in the building.

We have the support of 3 wonderful retired clergy and a good team of lay leaders;

Rev Jean Flood has been part of our community for over 30 years as a reader and more recently Interim Minister. She retired in 2019 and has returned, lending her support primarily to St Nathanael's both with Sunday worship and with mid-week activities. She leads the prayer support for the parish and the Team Prayer Whatsapp group.

Rev Michael Freeman met his wife Doreen when he was curate at St Mary's many moons ago. He has returned to the fold on retirement and supports us on Sunday's working between St Mary's and St Aidan's.

Rev Eddie O'Neill burst onto the Team as we came out of lockdown. He has a remarkable story of healing and has thrown himself into life across the parish, leading not only Sunday services but also the team bible study and leads the worship in our Walton Parish Family Church.

Nicola Dobbin leads the family service once a month at St Nats and is part of the planning team for Walton Parish Family Church.

Diane Regan is the churchwarden at St Aidan's and leads the Butterfly group, which helps lead worship at St Aidan's. She also chairs the Walton Council of Churches an ecumenical group working in the Walton area

Jean Hynes and Les Hughes are the current churchwardens at St Nathanael's and both play a huge part in all the outreach activities that happen throughout the week in the Church.

Brenda Nettleton and Rita Lacey are the churchwardens at St Mary's. Brenda heads up much of our outreach including the weekly foodbank, ably supported, particularly in prayer, by Rita.

Jayne the Verger works in a mostly voluntary capacity supporting the clergy in leading the occasional offices and day to day comings and goings at St Mary's.

Congregation

Sunday Worship and Occasional Offices

During the Covid pandemic our Interim minister and her husband produced weekly pre-recorded services which could be accessed via our website and social media pages. Many of our congregations did not have the technology to access this, so a phone-line to hear the worship was also set up. However our main way of staying in touch was through the efforts of the churchwardens and pastoral teams at each of the Churches. phoning folk regularly. This has meant that many of our congregation have stayed in touch and those that are able have returned to our weekly services.

St Aidan's Service is 10am every week. It is a Eucharist Service with Joan Stein playing the organ and Peter Stein serving. The Sunday School and Butterflies lead a more informal family service on the first Sunday of each month in term time. We have Baptism Services on request, these takes place after the Service. We have a number of Funerals each year with the Clergy being supported by the local team.

St Mary's Service is 10.30am every week. It is a Sung Eucharist Service with a team of servers, robed choir, organist and choirmaster. The Church bells are rung by a small but dedicated band of bell ringers prior to each service. We have almost weekly Baptism services held after the main service in church. We have around fifty Funerals each year and approximately four weddings.

St Nathanael's Service is 11am every week, this is Eucharistic apart from the third Sunday of each month, which is a well attended café style lay led family service. Baptisms occur within the main service.

All 3 churches have spiritually centred folk who lead weekly intercessions and read the lessons. A dedicated team lead Sunday School at each Church. Refreshments are served after each morning service in each Church.

Across the team we held 32 funerals, 3 weddings and 47 baptisms between May 2021 and May 2022

Historically we have come together for Team services for specific Saint's Days, through Lent and Holy week. We have continued to explore how we might work together to reach out to new people. This has led to starting a new worshipping community on a Sunday afternoon at 4pm, WPFC, funded through the Joshua Centre, for new families. The WPFC was born out of the high number of Baptism enquires the team received following the Covid Lockdown. We felt that we needed an informal space to welcome 'de-churched' families to come and hear the Gospel in a non-traditional Church setting. This happens once every 2 weeks and alternates between St Mary's and St Nathanael's and has a 'Messy Church' style service. We try and worship outside if weather permits! This is led by a team of about 10 people drawn from the two Churches.

We are also exploring how we might establish a fresh expression of Church through our Church school and has initial funding for any future project.

Governance

We currently have individual DCC for each Church with any decisions at these meetings taken for ratification at the PCC. Each Church has its own bank accounts and investment accounts and there is a joint account, the Common Fund. Each Church produces its own accounts and these are consolidated to form the team accounts in accordance with the charity commission guidance. Our charity number is 1131787. Whilst we don't have large reserves we are currently solvent and able to continue to pay our Parish Share in full.

In Summary

The Team Rector of Walton on the Hill will be expected to:

Lead the parish through these changing times seeking God's vision for the parish with the congregations of the three churches then work at turning that vision into action.

To train and equip, in realistic and practical ways, those whom God is calling to resource the work of the Kingdom in the management and mission of buildings; in families, children and youth work; in response to refugee and asylum seekers and whatever other challenges come along.

The Rectory

This was built about 3 years ago and is situated in Deanery Close on land which formerly belonged to the Old Rectory. The house meets the requirements for a clergy house, with four double bedrooms, one ensuite, downstairs there is a lounge, dining room and fitted kitchen, also an office. There are patio doors which lead to a garden at the rear. There is parking for two cars at the front of the house and at the side of the house space for a further two cars.

And Finally

Please do not be afraid of coming to work in Parish 101. We are a very friendly bunch who happen to live and worship in Walton-on-the-Hill. Whilst we might be one of the poorest parishes in terms of financial wealth and we might not be the largest of congregations, we have weathered many storms and we are still here. There have been difficult times in our history which have caused us to ask difficult questions and find answers that have strengthened our connections between the church communities. So we are still a Team ministry and we are committed to work together to see the doors to the Kingdom of God unlocked in our community. Will you come and be a leader amongst us?