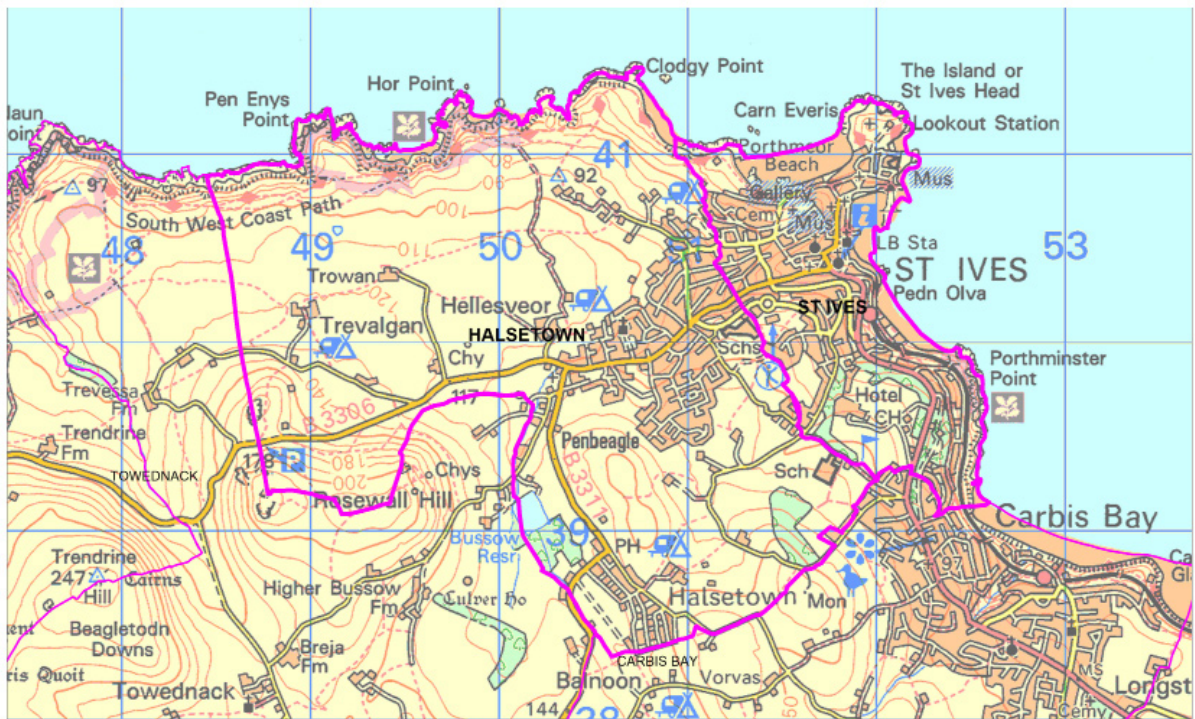


The Parish Churches of  
**St Ila,**  
**virgin and martyr**  
with St Peter and Andrew, and  
**St John in-the-Fields**



## PARISH PROFILE

St Ives Cornwall  
Penwith Deanery  
Truro Diocese



Digital Map from Dotted Eyes,  
Reproduced by permission of Ordnance Survey on behalf of HMSO.  
© Crown copyright and database right 2017. All rights reserved.  
Ordnance Survey Licence Number 100019918.

December 2017



The Parish Churches of  
**St Ives,**  
**virgin and martyr**  
with St Peter and Andrew, and  
**St John in-the-Fields**



---

## Contents

Forward

### **Profile**

1. Introduction

2. Profile of the Benefice

3. Profile of St Ives the Virgin

4. Profile of St John-in-the-Fields, Halsetown

### **Statement of Conditions, Needs and Traditions**

1. Key hopes for our Benefice

2. Key qualities we are looking for in our next priest

### **Appendices**

Statistical Information

Dashboard for the Parish of St Ives

Dashboard for the Parish of Halsetown

Copy of Accounts, St Ives the Virgin

Copy of Accounts, St John-in-the-Fields

Contributions from Local Schools

Joint Parish Service Sheet

Safeguarding

## The Benefice of St Ives and Halsetown

*The Bishop of Truro and the  
Dean and Chapter of Truro Cathedral  
seek a **VICAR***



### Forward

The Benefice of St Ives and Halsetown was created formally by Pastoral Scheme in 2016, though the two parishes have shared the same Parish Priest for some years now and together they comprise the town of St Ives and some of the beautiful coastal and rural scenery that surrounds it. This profile describes more fully the place, its churches and the people among whom the new Vicar will serve.

St Ives is internationally, and justifiably, renowned for its beauty, the quality of its light and its artistic heritage among other things, which combine to attract many to live here and many thousands to visit. This makes it a vital and fertile place for the mission and ministry of the Church. The congregations of St Ila and St John-in-the-Fields are committed to working with their new Vicar to continue the tried-and-tested and to discover many new ways of sharing the Gospel of Jesus with residents and visitors alike. This is a wonderful opportunity for a Priest of vision, faith and energy.

The benefice belongs within the **Deanery of Penwith**, the westernmost Deanery in the UK, comprising 27 parishes and served by around 10 incumbent clergy and a good number of retired and self-supporting ministers, both lay and ordained.

The Diocese of Truro seeks to take the welfare of its clergy very seriously and the Bishop is particularly keen to ensure that all work within a context of mutual support and encouragement. This is demonstrated in:

- the requirement that all incumbent clergy participate in the Diocesan programme of **Accompanied Ministry Development**
- the collection of policies adopted by Diocesan Synod under the heading “**Never Alone**”.

The person appointed to this role will embrace this ethos as well as the Truro **Diocesan Vision** to “Discover God’s Kingdom; Grow the Church”.

He/she will aspire to the **Qualities and Values** outlined by the Bishop of Truro below and will be able to demonstrate that they are well-matched against the **Person Specification** prepared by the parishes.

Application forms should in the first instance be submitted to myself, the Archdeacon of Cornwall. I will also be pleased to have an informal conversation about the post before an application is submitted, should you so wish.

**The Ven Bill Stuart-White**

**Archdeacon of Cornwall**  
**[bill@truro.anglican.org](mailto:bill@truro.anglican.org)**

## PARISH PROFILE

Parishes of St Ila the Virgin and St John-in-the-Fields, St Ives, Cornwall

---

### Qualities and Values of those we invite to work with us in achieving our vision



DIOCESE OF TRURO  
DISCOVERING GOD'S KINGDOM  
GROWING THE CHURCH

'The Church of England, as so often in its history, is facing a period of change in which we are being asked "to proclaim the Gospel afresh to a new generation" (Preface to the Oaths and Declaration). As well as this the Church is facing internal challenges, not least of which is the declining number of stipendiary clergy due mainly to large numbers of retirements.

In the Diocese of Truro we are responding to these challenges by investing in mission-focused initiatives that help us to discover God's Kingdom, grow the Church, and create flourishing communities. These focus around the challenge to personal **Discipleship**, the development of **Leadership** through Accompanied Ministry Development, and the priority of **Mission**, expressed not least through the encouragement of New Ministries. Further outworking of these is contained in the Diocesan Strategy document "**Confidence in the Gospel**" **Development plan 2016-18**.

We have also signed an Ecumenical Declaration of Intent (November 2013) with other denominations to commit ourselves to working together wherever possible.

The ordained ministry will continue to play a crucial role in the delivery of these initiatives, and therefore we are keen to have priests working in the Diocese who are at the forefront of meeting these challenges and achieving this vision.

With this in mind we are seeking to encourage and invite to work and live with us those priests who ...'

- are joyful at the demands of the Gospel and live convinced of the importance of hope. We are called to be a joyful and hopeful people;
- can work flexibly and are willing to be adaptable in their methods and approaches and seek partnership with those who work more widely to flourishing communities;
- are innovative and imaginative and strive to be creative and willing to risk failure in order to learn;
- are clear and realistic about their own need to seek repentance regularly and who also look to be those who act as signs and symbols of the reconciling love of God;
- know the value of journeying with others, seeking always to be a pilgrim who learns and grows alongside fellow-travellers;
- nurture and enable a sense of discipleship and vocation in themselves and others;
- live always striving to be people of integrity and authenticity as they seek to become imitators of Christ;
- are eager to see growth in all its dimensions and are aware and excited by the dynamic reality that we are always changing and that change brings opportunities and fresh challenges;
- are convicted of the necessity and virtue of working with others so that they never work alone. In other words they are alert to collaboration with all who work alongside them, clergy and lay and will work to forge good relations with other denominations to further the missio dei (God's mission);
- are resilient in personal terms with a well-developed and rigorous prayer discipline, mindful of the need to balance their life and work and also resilient and aware of the joys and tensions of being part of the Church of England.

Update March 2017



## PROFILE

### Parishes of St Ila the Virgin and St John-in-the-Fields, St Ives, Cornwall

---

#### **I. Introduction**

***Welcome and thank you for your interest.  
We offer something special and are sure you will agree!***

- Our Benefice offers two parishes which are different in terms of their location and social mix, but work together to continue to fulfil our joint mission 'Celebrating the good news of God's Love'.
- The 15th century church of St Ila is in a prime position overlooking the harbour. We extend a warm welcome to all who come to St Ives, our doors are open daily for prayer and reflection.
- St John in-the-Fields Church serves the parish of Halsetown and was consecrated in 1860. Although geographically a distance away from the village of Halsetown, it has a growing community where many local St Ives people live. The church is now surrounded by local housing. The parish church also encompasses Penbeagle Industrial Estate comprising of small industry.
- Our churches are affirming and inclusive and the liturgy in both is centred on the Parish Eucharist.
- We promote our churches at every opportunity through joint events such as concerts, exhibitions and community festivals.
- We are blessed with a devoted team of officers that each bring their own particular skill set and management expertise.
- We have a strong musical tradition centred around the choir promoting music and singing opportunities within our parishes and through building stronger links and relationships with other churches.
- Between the two churches we have five representatives for Deanery Synod.
- Our Vision;
  - To improve our links with young people and to welcome new families to join our worship.
  - To develop our ministry through social action, targeting the needs of the community
  - To grow our relationships with schools and youth groups.
  - To create a more visible presence in the parishes.
- The vicarage with its four bedroom, study and large orchard garden, is located adjacent to the church of St John-in-the-Fields.



## PROFILE

### Parishes of St Ila the Virgin and St John-in-the-Fields, St Ives, Cornwall

---

#### 2. Profile of the Benefice

St Ives is a seaside town 'of great charm and character'. Our wonderful beaches border one of the 'most beautiful bays in the world' and the surf laden Atlantic, historic cobbled streets, easy access to the South West coastal footpath and a famous tradition of art & culture, it is one of the most desirable places to be in the country. The local art tradition and the quality of light which has attracted artists during three centuries, lends St Ives a certain quality, not eccentric but definitely not conventional. Galleries and studios abound and the St Ives September Festival features a growing programme of quality art and culture.



St Ives is bustling and busy with Holidaymakers throughout the year; it peaks during the school holidays.

Historically a fishing village, present day attractions include The Tate Gallery, Barbara Hepworth studio and garden, The Bernard Leach Pottery, numerous galleries and watersport activities.

The Incumbant will encounter a wide and diverse community consisting of local residents, employed and retired, seasonal workers, second home owners, occupational employees, all of whom have differing expectations.

Traditionally as confirmed by local statistics the parishes are relatively deprived with respect to other comparable parishes.

Although only twelve miles from Land's End, St Ives has good transport links with the rest of the country. Within the Diocese we have many excellent colleges and universities.

For more information regarding St Ives town visit the St Ives Cornwall Tourism Association website at <https://www.stives-cornwall.co.uk/>.

#### Anglican Churches

##### **St Ila the Virgin, Market Place, St Ives**

Dedication: St Ila the Virgin with St Peter and St Andrew  
Grade: Grade I listed  
Capacity: c.250

##### **St John-in-the-Fields, Halsetown**

Dedication: St John the Evangelist  
Grade: Not listed  
Capacity: c.200



There is also a small consecrated Chapel on top of The Island where a few short services are held during the year.

Sunday Service times are arranged to enable the incumbant to visit both churches. And we have a single weekly service sheet to cover both parishes (see page 28).

## PROFILE

Parishes of St Ila the Virgin and St John-in-the-Fields, St Ives, Cornwall

---

### 2. Profile of the Benefice (Contd.)

#### Other Denominations' Churches

- Roman Catholic Church
- Methodist Churches. In central St Ives : Fore Street; United Methodist Bedford Road; Bible Christian. On the outskirts: Hellesveor Methodist Chapel, Consols
- Zion Congregational Chapel, Countess of Huntingdon's Connexion
- Barnoon Gospel Hall - Brethren
- Church of the Vine, Elim
- Salvation Army
- There is also a small interdenominational Fishermen's Chapel on the main Quay.

#### Educational establishments

- A number of Nurseries (see [www.thebarndaynursery.co.uk](http://www.thebarndaynursery.co.uk) or [www.littleseahorses.co.uk](http://www.littleseahorses.co.uk))
- St Ives Infants School (see page 26)
- St Ives Junior School (see page 27)
- St Ives School (part of Truro and Penwith Academy Trust, see [www.stives.cornwall.sch.uk](http://www.stives.cornwall.sch.uk))

#### Other Institutions & facilities in the two parishes include:

- Stennack Medical Centre (GP's, Clinics, District Nurses, Pharmacy etc)
- Numerous bands, choirs etc.
- Kidz R Us - youth theatre group and St Ives Theatre
- Tate Gallery plus a large number of private galleries
- St Ives Museum
- Library
- St Ives Trust Archive Centre
- Young People's uniformed organisations
- Fire Station & Coastguard Station
- Coastwatch Station
- RNLI Lifeboat
- St John Ambulance
- Swimming Pool & Leisure Centre
- Guildhall & Town Council
- St Ives Children 's Centre
- Nursing and Residential Home
- Hotels, and first class restaurants
- Rotary Club
- Arts Club
- Rugby Club
- Boxing Club
- British Legion
- Judo Club
- Football Club
- Tennis Club
- Bowling Club
- Sailing Club
- Riding School
- Surfing Club
- Bridge Club
- Slimming Club





## PROFILE

### Parishes of St Ila the Virgin and St John-in-the-Fields, St Ives, Cornwall

---

#### **3. Profile of St Ila the Virgin**



##### **Church Membership**

St Ila the Virgin is The Parish Church of St Ives, home of the Town Clock, with Traditional Anglo Catholic Worship. We benefit from an all year round congregation (100 on the electoral role) from around the greater St Ives area as much because of the style of worship as its central location. Although attendance in the c250 capacity building may vary between 40 and 70 on most Sundays, that number will be swelled mainly, but not only, during the holiday seasons with a number of visitors and part time residents who consider the Church to be an integral part of their time in the town. St Ila can offer a Sunday School for young people and families although numbers of young people have fallen in recent years.

The employment and status profiles of the town are shown in an attached appendix. Church members would probably be described as from the older and more prosperous end of the profile with, perhaps, a larger proportion of retired people than in the town at large.

During the past twelve months there were 10 Baptisms (2 adults), 21 Marriages (Few from the parish most by special licence) and 2

Wedding Blessings at St Ila the Virgin while the clergy conducted some 5 funeral services followed by committal at Penmount, Treswithian crematoria, or Longstone Cemetery.

##### **Churchmanship/Tradition**

There is a strong Anglo Catholic tradition with sung Eucharist every Sunday, Incense offered, the Sanctus Bell rung and the Gong sounded. Servers are robed and clergy wear traditional vestments. We have a Musical Director and a robed choir who sing anthems every Sunday and on special occasions. The Lords Prayer and responses are sung and a number of cantors chant the weekly psalm. We provide a good standard of music which has come to be a recognised aspect that complements our Anglo catholic liturgy.



We have a team of servers who are members of the Servers of the Sanctuary and lay people that take part in intercessions and readings.

##### **Finance**

The Financial Statements for the Church are shown in an attached appendix. We benefit from a number of regular donations from visitors plus our own fund raising efforts. The church owns two cottages from which an income is derived. We also generate significant funds by having the church building open most of the year supervised by our volunteer stewards. During the holiday season we have both daytime and evening concerts with a retiring donation. Our Events team raise funds throughout the year with our Church Café, Garden Fêtes and various traditional festivals. The Café is open throughout the holidays offering a host of homemade goodies.

##### **Contact Details**

Please see the St Ives Parish Church website at [stiveschurch.org.uk](http://stiveschurch.org.uk) and facebook St Ila's - St Ives Parish Church.



## PROFILE

### Parishes of St Ia the Virgin and St John-in-the-Fields, St Ives, Cornwall

#### 3. Profile of St Ia the Virgin (Contd.)

##### Ministry & Mission

Our Mission Statement 'Celebrating the good news of God's Love' is shared with St John-in-the-Fields. The foundation of our life in the church is worship and prayer as we support each other on our journeys of faith. With the power of God's spirit we continue to make Christ known in the communities he has called us to serve.

In recent times we have undertaken a number of mission initiatives including; a meditation group and a joint parish Bible Study Group.



St Ia is home to the towns many civic and traditional annual services and ceremonies. Throughout the year we welcome schools and groups for services, ceremonies, history and art tours.

##### Patterns of worship & services

Sunday	08:00am Mass
	09:45am Parish Mass
Friday	10:30am Said Mass

Other Festival Services include...

Services every day during HolyWeek.

A number of Carol Services for local organisations.

Midnight Mass on Christmas Eve.

Childrens Nativity service.

##### Other Matters

The organ in St Ia Church is a fine example of a Heal instrument and attracts professional organists from far and wide.

The Vicar in St Ia the Virgin is also a trustee of the John Knill Day ceremony held in July once every five years. And is an integral part of the celebrations for St Ives annual Feast Day of St Ia the Virgin. He or she is also obliged to give the Hext Sermon to commemorate the granting of the Town's Charter in 1295. St Ives Feast Day is held in February every year and the Hext Sermon in May.



## PROFILE

### Parishes of St Ia the Virgin and St John-in-the-Fields, St Ives, Cornwall

---

#### 4. Profile of St John in-the-Fields



##### Church Membership

St John in-the-Fields built in the 19th century originally surrounded by miners cottages has over the years experienced many changes but now presents a challenge both for traditional and alternative services with its central altar backed by a beautiful east window full of life and colour, portraying a nativity of the Lord, Madonna, St John and angels. A delight to behold! It has a small welcoming church family, following a catholic tradition with opportunities for alternative services.

Parish employment and status profiles are much the same as those in the census figures shown in the attached appendices.

##### Churchmanship/Tradition

Presently St Johns worship is mainly Eucharistic, based on Anglican liturgy of common worship with music. Services are presided over by the incumbent and retired clergy assisted by worship leaders, robed servers and members of the congregation. At present one member of the congregation is training to be a Lay Reader. During the Sunday service Incense is offered and bells and gong are sounded. Prayer ministry is offered at each service by a small team of intercessors. In addition we have four Franciscans of the Third Order and one currently in training. All including those not confirmed, and families with children are welcomed at the altar for a blessing during the communion.

##### Patterns of Worship & Services

Sunday 11:15am Parish Mass

Some evening services have been held recently centred on alternative worship, meditation and prayer, but this has not yet become a regular event.

During the past 12 months there has been 5 baptisms, 2 marriages and 8 funerals.

##### Ministry and Mission

Whilst we value our distinctive styles of worship and ways of doing things we have more recently been working more closely with St Ia. Although St Johns does not share the benefit of being in the midst of the tourist scene, it does nevertheless present a challenge of diversity situated in its own extensive grounds surrounded by modern residential dwellings. The grounds themselves offer opportunities for festivals, fetes and youth activities. Another asset is the large car park around the church.

##### Contact Details

Please see facebook St John in-the-Fields.





## PROFILE

### Parishes of St Ia the Virgin and St John-in-the-Fields, St Ives, Cornwall

---

#### **4. Profile of St John in-the-Fields (Contd.)**

We have a well-appointed church hall used throughout the week by Bridge Club, Slimming World, children's parties, socials and receptions. It is also used for local elections and Civic occasions (as the mayor recently did when she held a lunch for local citizens of St Ives). We also hold jumble sales periodically, as well as Christmas fare and summer events. The proceeds shared between church funds and a nominated charity.

We take part in the annual Good Friday March of Witness with other churches in St Ives and share in other outreach initiatives organised by Churches Together.

The church has been a centre for school visits, drama groups, craft and flower festivals as well as religious performances by choirs and individual artists.

Many choose to retire to St Ives, living in their own homes or in one of the residential or nursing establishments in the area. As invited, a small group visits the homes to sing hymns, pray and have fellowship with the residents, some of whom receive Holy Communion and healing ministry.



We desire to be united in growth and would welcome opportunities for Mission and Outreach and festival celebrations as part of the Christian community of our Benefice.



# STATEMENT OF CONDITIONS, NEEDS AND TRADITIONS

## Parishes of St Ila the Virgin and St John-in-the-Fields, St Ives, Cornwall

---

### **I. Key Hopes for Our Benefice**

We as a new Benefice want to celebrate the good news of God's love by maintaining our churches as places of worship and communion, the foundation upon which all else is built. We welcome an integrated approach of our services with civic ceremonial events - reaching out to others to strengthen the place of the church at the centre of community life. We encourage and nurture the spiritual growth and commitment of our congregation to take more of an active involvement in church life, to open our hearts and doors to visitors whether seeking long-term spiritual sustenance or wishing to know more about Christianity and the church or simply seeking a place and people to understand their current condition. We wish our Christian belief and the way we live it out in our lives and worship to be central to our lives and attractive to those looking in from outside the church.

Specifically, we seek...

1. Numerical Growth:-
  - a) To expand our mission to the younger generation by building on our current relationships with the local schools.
  - b) To revitalise peoples faith in Christian belief through more public representation and involvement with the church community.
  - c) To encourage secular activities to make use of our buildings, facilities and environment for functions, fundraising, exhibitions and events all in anticipation of an increase in congregation numbers.
2. Unification and development of our social media and websites whilst maintaining our distinctive ethos and individual styles.
3. To develop a more flexible programme of traditional and alternative liturgy.
4. To continue Christ mission as healer through outreach work to the elderly, infirm, bereaved and those in need, developing a greater level of community care.
5. Greater co-operation in schemes such as Churches Together, joint events like lent lunches, Walks of Witness, Advent services and other events unique to St Ives.
6. St Ila has embarked on a project that began with the sale of its parish rooms. This has released funds for the creation of additional space for Sunday School and community use. We look forward to the support of a new incumbent with this venture.
7. St Johns is home to a valuable and well-utilised church hall complete with parking, we look forward to an expansion of activities to cater for the needs of the community.
8. Our new benefice is looking forward to an individual who will lead our open minds and hearts to new ventures and ideas.



STATEMENT OF CONDITIONS, NEEDS AND TRADITIONS  
Parishes of St Ia the Virgin and St John-in-the-Fields, St Ives, Cornwall

---

**2. Key qualities we are looking for in our next priest...**

The new vicar will need to be a prayerful priest with pastoral, managerial and teaching skills. An individual who is strong, flexible, adaptable and can comfortably hold together our diverse traditions, who can lead us forward in worship in a variety of styles.

In the new incumbent we look for...

1. An inspiring open-hearted priest whose vitality and zest for life shines out in the leading of uplifting worship, preaching of the gospel, church teaching and instruction in the catholic tradition.
2. Has a clear understanding of Liturgy and who is liberal and inclusive.
3. Chairmanship that demonstrates good and firm leadership.
4. Wisdom born from life experience together with spiritual understanding.
5. Able to lead, set a vision to assist with forward thinking objectives to help us all realise our mission.
6. Provide support to Church Officers, Musical Director, both PCCs and other committee members.

In Conclusion, we offer a fantastic opportunity to be a part of a faithful family. Besides the beautiful churches that come with the position, there are a lot of attractions and distractions in the area, a chance to live in a place that offers many ways to expand the mind, body and soul. We look forward to welcoming you into our family.

## APPENDICES

Statistical Information				
			St Ives	Halsetown
<b>1. Total Population</b>		Number:	3300	3400
	0 - 14	Percentage:	10	17.8
	15 - 29		14	16.9
	30 - 44		14.5	18.9
	45 - 59		22.7	21
	60 - 74		24.5	17
	75 - 89		12.7	7
	90 & over		1.6	1.4
	Population Aged 15 - 74:	Number:	2498	2509
<b>2. Employment &amp; Social Grade, Lifestyle</b>				
Hours Worked	Full-time: 49 or more hours worked	Percentage:	17	13
	Full-time: 31 to 48 hours worked		47	49
	Part-time: 16 to 30 hours worked		25	27
	Part-time: 15 hours or less worked		12	12
	Proportion of working age population who are in receipt of a key out-of work benefit	Percentage:	8	10
<b>3. Households, Lifestyle &amp; the Community</b>				
	Households	Number:	1650	1400
	Household Mobility			
	No access to car or van	Percentage:	36	27
	Access to at least 1 car or van		64	74
	Household Composition			
	One person	Percentage:	44	28
	One family		50	65
	other		6	6
	One Person Households			
	Aged 65 & over		20	13
	Other		24	15
	One Family Households			
	Married or same-sex civil partnership		23	32
	Aged 65 & over		10	8
	Cohabiting		9	12
	Lone parent		7	13
	Lone person household as a percentage of all households with children		24	27

The above statistics have been taken from The Church of England Research and Statistics and have been mapped onto benefice boundaries so are approximations. For more information see <https://www.churchofengland.org/about-us/facts-stats/research-statistics.aspx>.

## APPENDICES

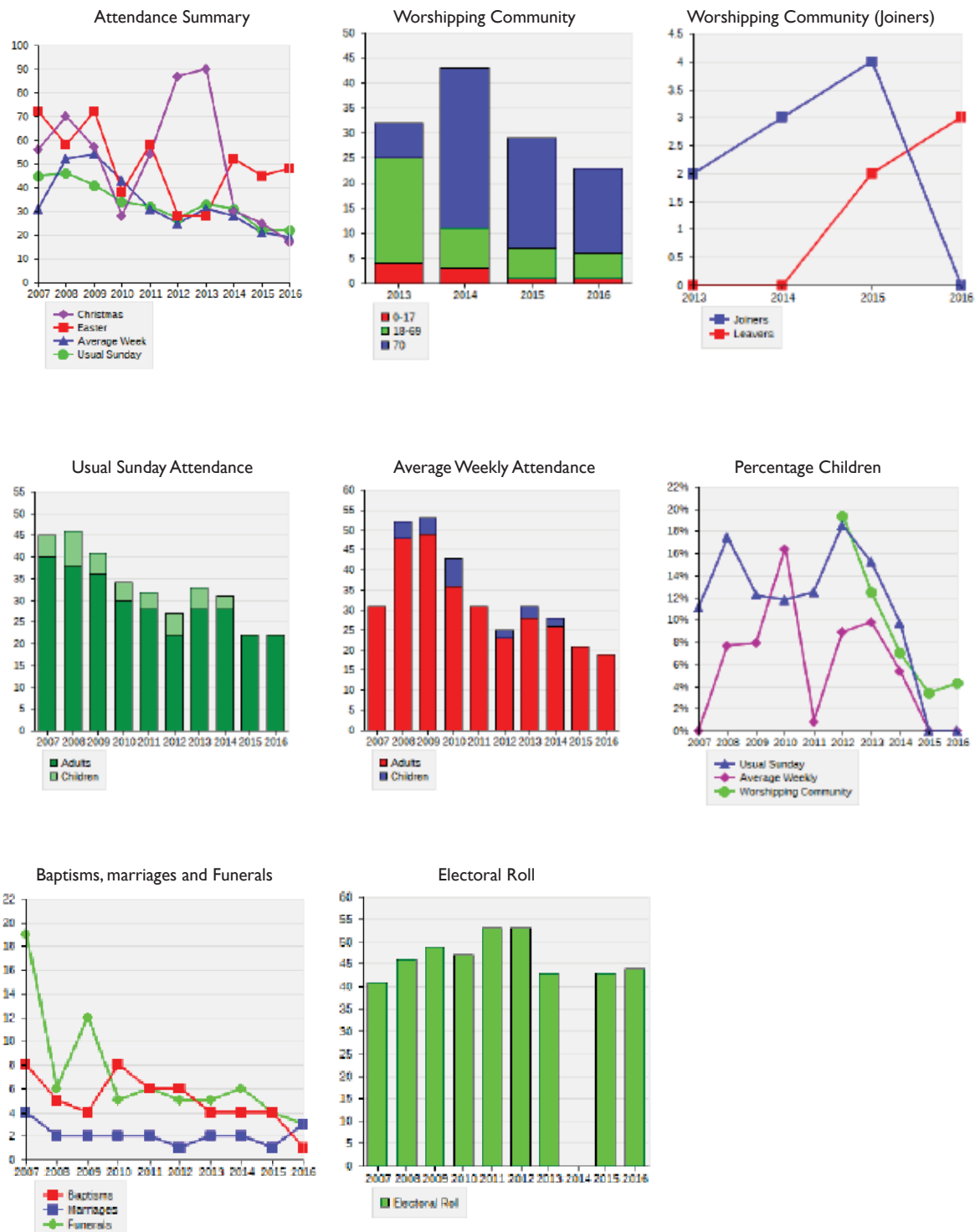
### Parish Dashboard - Parish: St Ives



The above information has been taken from The Diocese of Truro Parish Dashboard - Parish: St Ives

## APPENDICES

### Parish Dashboard - Parish: Halsetown



The above information has been taken from The Diocese of Truro Parish Dashboard - Parish: Halsetown



## St Ives Parochial Church Council

### Financial Statement for the year ended 31/12/2016

#### General Fund Receipts and Payments Account

		2016		2015	
<b><u>Receipts</u></b>	Note	£	£	£	£
<b><i>Incoming resources from donors</i></b>					
Planned giving:					
Net amount given under Gift Aid		6489.61		6859.67	
Tax recovered	1	4556.33		5052.71	
Other planned giving (not Gift Aid)		1231.00	12276.94	965.30	12877.68
<b><i>Unplanned giving:</i></b>					
Collections in church		7595.51		7604.43	
Gift days and sundry donations		851.05	8446.56	379.20	7983.63
<b><i>Other voluntary incoming resources</i></b>					
Recurring grants		0.00	0.00	0.00	0.00
<b><i>Income from investments</i></b>					
Interest and dividends received (gross)		0.00		0.00	0.00
Rent Received Redfern CT less DP Scheme		13800.00	13800.00	14012.27	14012.27
<b><i>Activities for generating funds</i></b>					
Fund Raising Gross		0.00		0.00	
Bookstall and magazines (gross)		2644.94		2673.46	
Fees Paid to PCC (Net)		4398.00	7042.94	3999.00	8301.71
<b><i>Non recurring income</i></b>					
Non recurring grants		0.00		0.00	
Legacies	2	5000.00		0.00	
Special appeals		23282.11		20551.01	
Insurance claims		0.00		0.00	
Sale of fixed assets	3	0.00	28282.11	316764.02	337315.03
<b>Total Receipts</b>			69848.55		380490.32

## St Ives Parochial Church Council

### Financial Statement for the year ended 31/12/2016

#### General Fund Receipts and Payments Account

		2016		2015	
<u>Payments</u>	Note	£	£	£	£
<b>Grants to further the work of the church</b>					
Donations and grants to charities		1160.00	1160.00	1150.00	1150.00
<b>Activities directly related to the work of the church</b>					
Mission & Ministry Fund	4	35848.00		27191.00	
Clergy and assistant staff expenses		1920.00		1965.53	
Church Running Expenses		12205.27		10797.37	
Church maintenance		1094.12		1575.48	
Upkeep of services		1958.81		2436.19	
Upkeep of churchyard		35.50		379.36	
Magazine and bookstall expenses	5	4143.13		2397.31	
Hall & other property running costs		996.59		5034.29	
Salaries , wages and honoraria	6	5000.04		8666.67	
Mission and evangelism		0.00	63201.46	0.00	60443.20
<b>Church management and administration</b>					
Fund raising costs		889.39		790.75	
Church administration		1430.08	2319.47	962.05	1752.80
<b>Governance costs</b>					
Examination of Accounts		90.00	90.00	90.00	90.00
<b>Major capital expenditure</b>					
Major repairs and redecoration		686.00		1139.93	
New building work	7	2906.40	3592.40	0.00	1139.93
<b>Total Payments</b>			70363.33		64575.93
Opening Balance 1/1/2016			4675.57		6540.34
Excess of Receipts over Payments			-514.78		315914.39
Add transfers in			18000.00		321856.63
Deduct transfers out			18000.00		639635.79
Closing Balance 31/12/2016			4160.79		4675.57

## PCC St Ives General Account

### Note

- 1 There is a fall off from tax recovered and some of this can be attributed to what seems to be a constant shortage of pens for people to fill out Gift Aid envelopes.
- 2 A legacy of £5000 was received from the estate of the late Pam Parkinson RIP, the stipulation being that it be used 'for the beautification of the church'. These funds are held in the Reserve account and marked as 'restricted'.
- 3 The high figure last year related to the net sale proceeds of the Parish Room.
- 4 In 2010 MMF(Common Fund) arrears had escalated to an alarming figure in excess of £66000. St Ia had previously enjoyed a good record of meeting its quota in full each year. Since that time we have made substantial inroads into removing this deficit through various incentive schemes introduced by the Diocese in response to their financial difficulties.  
Since 2014 the Diocese have increased MMF quotas in excess of 30% across the board, they had previously been based on annual accounts. The 2014 quota amounted to 27191 and was based on our accounts for 2013. The quota now stands at £35848 for 2016, with a further 1.5% increase planned for 2017. For us these figures are unsustainable as our true income does not support this level of expenditure.  
However, there was an incentive for 2016 that any parish that met its quota in full would have all previous arrears cancelled. At the beginning of 2016 our arrears had been reduced to £29857 (£66000). I recommended to the PCC that we draw £10000 from our reserves on a one off basis to meet the quota.  
We did meet the quota, but like all parishes we will in future have to accept MMF arrears accumulating year on year as we cannot meet this sum from income and it would be folly to drain our reserves in order to do so.  
Should we drain our reserves to meet this we would get no support from the Diocese if we ran into financial difficulty.
- 5 There was a substantial uplift in Bookstall expenditure as stock was revamped to saleable items.
- 6 Following the appointment of Peter Luing as both organist and Musical Director we have seen a substantial saving in expenditure together with a big uplift in income generated from concerts. Both Peter and Christine have made a huge contribution in this regard.
- 7 Expenditure of £2592 was incurred for a survey required on the church to enable the architect to undertake drawings for the vestry area.  
A further £314.40 was paid to South West Water for permission to carry out repairs to the sewerage and drainage system. It is anticipated that this work will cost in the region of £10000, and will be an integral part of the vestry development, with funds sourced from Parish Hall funds. Work is expected to start on the drainage in Feb 2017.

## St Ives Parochial Church Council

### Designated Accounts for the year ended 31/12/2016

			2016	2015
<b>Parish Hall Funds</b>				
	Note			
<b><u>Receipts</u></b>				
Investment income			3582.36	0.00
<b><u>Payments</u></b>				
Excess Receipts over Payments			3582.36	
<b><i>Opening Balance</i></b> 01/01/2016			316764.02	
Add transfers in 01/01/2016				
Deduct transfers out				
Closing Balance 31/12/2016	1		320346.38	316764.02

### Investments for Parish Room Net Sale Proceeds

Hampshire Trust 100 Day Notice	76125.00
Cambridge & Counties 95 Day Notice	75898.97
Julian Hodge Bank 90 Day Notice	75593.32
Skipton Building Society 60 Day Notice	75935.76
Yorkshire Building Society Community Saver	16793.33
	<u>320346.38</u>

### Reserve Account

		2016	2015
	Note	£	
<b><u>Receipts</u></b>			
Investment Income		10.27	50.35
<b><u>Payments</u></b>			
		0.00	0.00
<b><i>Excess Receipts over payments</i></b>		10.27	50.35
Opening Balance 1/1/2016		21089.13	21350.05
Add transfers in		14500.00	319581.77
Deduct transfers out		18000.00	319893.04
Closing Balance 31/12/2016		17599.40	21089.13



## St Ives Parochial Church Council

### Designated Accounts for the year ended 31/12/2016

Restoration Account	(Restricted Funds)	2016		2015	
		£	£	£	£
	Note				
<b><u>Receipts</u></b>					
Sundry Donations		113.25		450.00	
Special Appeals		2227.75		14555.58	
Investment income		20.51		17.75	
Grants		0.00		0.00	
Legacies		<u>0.00</u>	2361.51	<u>0.00</u>	15023.33
<b><u>Payments</u></b>					
Major repairs and redecoration		250.96		9870.00	
New building work		0.00		0.00	
Other		<u>0.00</u>	250.96	<u>0.00</u>	9870.00
<b><u>Excess Receipts over payments</u></b>			2110.55		5153.33
Opening Balance 1/1/2016	Curr A/c	141.02		237.99	
	Savings	<u>31208.73</u>	31349.75	22271.63	22509.62
Add transfers in			3500.00		400.00
Deduct transfers out			0.00		0.00
Closing Balance 31/12/2016	Curr A/c	781.06			
	Savings	36179.24	36960.30		28062.95

### 60/40 Sweepstake

		2016	2015
<b><u>Receipts</u></b>			
Subscribers	2	708.00	796.00
Subs prepaid		12.00	24.00
<b><u>Payments</u></b>			
Draw winners		260.00	220.00
Items bought for church		<u>270.00</u>	
Excess Rec/Pay		190.00	<u>600.00</u>
Opening Balance 1/1/2016		3361.44	2761.00
Closing Balance 31/12/2016		3551.44	3361.44

### PCC St Ives Designated Accounts

#### Note

- 1 This provides detail of where the net proceeds from the sale of the Parish Room are invested. These funds are deemed 'restricted' as they allocated toward the development of the new facilities within the church. Whilst architect opinion and ideas are being sought, the PCC has not yet been presented with plans or given formal approval.  
The investment of funds was completed toward the end of 2015. This was protracted due to the necessity of having at least 3 signatories all of whom had to provide formal identification to the various institutions. This was further exacerbated by the Financial Services Compensation Scheme which provides protection of up to £75000 with each separate organisation.  
The PCC should be aware that interest capitalisation has caused some of these investments to exceed the FSCS limit, however, given the general low interest rates available elsewhere, I feel there is minimal risk from the institutions chosen.
- 2 The 60/40 Sweepstake has an operational requirement of 50 members, each contributing the equivalent of £1 per month. A monthly draw is then made with a prize of £20 for the winner. The balance is retained for the church and the scheme has made substantial contributions toward essential purchases for the church over many years.  
The 60/40 club desperately needs new members to ensure its viability.

## APPENDICES

### Parochial Church Council St Ives Financial Statement for the Year ending 31/12/2016

#### Satatement of Assets and Liabilities as at 31/12/2016

##### **Monetary Assets**

			2016 £	2015 £
General Current Acc	HSBC		4160.79	4675.00
Reserve	HSBC	Restricted	17599.40	21089.13
Restoration Current	HSBC	Restricted	781.06	141.02
Restoration Savings	HSBC	Restricted	36179.24	31208.73
<i>Net Sale Proceeds Parish Room</i>				
Hampshire Trust 100 Day		Restricted	76125.00	75000.00
Cambridge & Counties 95 Day		Restricted	75898.97	75000.00
Julian Hodge Bank 90 Day		Restricted	75593.32	75000.00
Skipton Building Soc 60 Day		Restricted	75935.76	75000.00
Yorkshire Building Soc Com Saver		Restricted	16793.33	16764.02
Total Cash			<u>379066.87</u>	<u>373877.90</u>

##### **Debtors**

None

##### **Other Assets**

HMRC Gift Aid Claim 2016 pending  
£3,698.03

##### **Liabilities**

Unfulfilled MMF Contribution	0.00	29857.66
------------------------------	------	----------

##### **Non-monetary assets**

As per Terrier  
The 60/40 Sweepstake Account is recorded  
in the accounts for audit purposes but excluded  
from this statement as the funds are deemed to  
belong to the subscribers

# APPENDICES

Halsetown Parish  
Financial Statements for the year ended December 2016

## General Fund Receipts and Payments account

Receipts	Note	2016		2015	
		£	£	£	£
<b>Voluntary Income</b>					
Tax efficient planned giving		4,110.20		5,227.39	
Other planned giving (not Gift Aid)		796.00		949.50	
Other collections at services		3,040.16		2,946.67	
All other recurring donations/giving		-			
All non recurring donations/giving/appeals		1,144.91		880.90	
Gift Days and sundry donations					
All Tax recovered		2,545.79		3,347.11	
Legacies					
Recurring grants		-			
non recurring grants			11,637.06		13,351.57
<b>Activities for generating funds</b>					
Fundraising			2,222.96	2,513.63	2,513.63
<b>Income from investments</b>			-		
<b>Church activities</b>					
Statutory Fees		771.00		1,047.00	
Book stall/magazine		-			
Hall Lettings		6,889.75		6,320.95	
Other church activities		-			
			7,660.75		7,367.95
<b>Other Incoming Resources</b>			-	665.73	
<b>Total Receipts</b>			£ 21,520.77		£ 23,898.88
<b>Payments</b>					
<b>Cost of generating Funds</b>			207.90		162.85
<b>Mission giving and donations</b>			145.58		566.00
<b>Church Activities</b>					
Maintenance and Mission Fund		7,000.00		19,247.00	
Salaries, wages and honoraria		-			
Clergy and assistant staff expenses		1,004.13		729.98	
Mission and Evangelism		133.73	8,137.86	56.00	
<b>Regular church Running costs</b>					
Insurance		2,259.71		2,198.11	
Cleaning		1,406.33		1,303.30	
Admin Costs		-		78.54	
Maintenance		1,429.94		829.42	
Upkeep of Service		100.01		420.13	
Upkeep of Churchyard		203.40	5,399.39	516.36	25,378.84
<b>Church Utility bills</b>					
Gas		465.67		-	
Electric		543.18		606.63	
Water		254.32	1,263.17	235.65	842.28
<b>Cost of Trading (magazine, hall etc)</b>			130.00	130.00	130.00
<b>Governance Costs</b>			-		
<b>Major capital expenditure</b>					
Major repairs and redecoration-church		3,606.00			
Major repairs and redecoration-hall		-	3,606.00		-
<b>Transfers to Other Funds</b>					
<b>Total Payments</b>			£ 18,889.90		£ 27,079.97
<b>Excess of receipts over payments</b>			2,630.87		3,181.08
Bank current and deposit account at 1st January 2016		9,685.96			12,867.05
			9,685.96		
<b>Bank current and deposit account at 31st December 2016</b>			12,316.83		9,685.96

H ACCOUNTS 2016 (1).xlsx



# APPENDICES

## Financial Statement for the year ended 31st December 2016

### Statement of assets and liabilities year ended 2016

	General Fund £	Fees Fund £	Special Projects Fund £	..... Fund £	..... Fund £	Totals 2016 £	2015 £
<b>Monetary assets</b>							
Bank current account	12,317					12,317	9,685
Other bank accounts:							
H.S.B.C Fees account		0				0	0
H.S.B.C Special Projects			2,242			2,242	2,240
<b>Total cash</b>	<b>12,317</b>	<b>£</b>	<b>2,242</b>	<b>£</b>	<b>£</b>	<b>14,559</b>	<b>11,925</b>
<b>Debtors</b>							
<b>Other assets</b>							
<b>Liabilities</b>							
<b>Total liabilities</b>	<b>£</b>	<b>£</b>	<b>£</b>	<b>£</b>	<b>£</b>	<b>£</b>	<b>£</b>
<b>Non-monetary assets</b>							

Approved by the Parochial Church Council and signed on its behalf by:

..... (Chairman)

..... (Treasurer)

..... (Date)

## APPENDICES

### **Independent Examiner's Report to the members of St John's in the Field Church, Halsetown Parochial Church Council.**

I report on the accounts for the year ended 31<sup>st</sup> December 2016.

#### **Respective responsibilities of the Trustees and Independent Examiner**

The charity's trustees consider that an audit is not required for this year under section 144(2) of the Charities Act 2011 and that an independent examination is needed.

It is my responsibility to

- (a) Examine the accounts under section 145 of the 2011 Act
- (b) Follow the procedures laid down in the General Directions given by the Charity Commissioners section 145(5)(b) of the 2011 Act; and
- (c) State whether particular matters have come to my attention.

#### **Basis of Independent Examiner's Statement**

My examination was carried out in accordance with the General Directions given by the Charity Commission.

An examination includes a review of the accounting records kept by the charity and a comparison of the accounts presented with those records. It also includes consideration of any unusual items or disclosures in the accounts, and seeking explanations from the committee concerning any such matters.

The procedures undertaken do not provide all the evidence that would be required in a full audit, and consequently I do not express an audit opinion on the accounts.

#### **Independent Examiner's Statement**

In connection with my examination, no matters have come to my attention

1. Which give me reasonable cause to believe that in any material respect the requirements  
To keeping accounting records in accordance with s.130 of the 2011 Act; or  
To prepare accounts which accord with these accounting records have not been met, or
2. To which in my opinion, attention should be drawn in order to enable a proper understanding of the accounts to be reached



Joan Chapman  
Tremeum  
Castle Gate  
Ludgvan Penzance TR20 8BG



*For every child to set out  
confidently on the adventure of  
learning: curious about the world,  
excited about their future, positive  
about their ability and caring  
towards other people.*

As an infant school our prime responsibility is to ensure that the children's early educational experiences are positive and that they develop the skills and attitudes upon which the rest of their education will be built. As the children 'set sail' we want them to be excited about the world around them and eager to learn.

The school has six classes and a 52 place nursery. In addition we have an art studio, library and community room, the Jubilee Room. Attractive outdoor areas are used by the children through the school day.

The school is an inclusive community school. We want all children and their families to feel at home in the school and to know that their beliefs are respected and valued.

Through our RE curriculum we aim to develop the children's knowledge of different religions and their understanding of the place of religion in people's lives. We also encourage the children to express their own responses to the experiences and ideas which they encounter.

We play a very active part in the local community and are often seen out and about - visiting the museum, Tate, local woodland and beaches and taking part in community events including a carol concert in the parish church.

Close links are maintained with the local churches and chapels and each week a member of the local clergy visits the school to lead an assembly. We also like to take the children to visit the local churches as part of our RE curriculum.

Thank you for inviting the school to contribute in this way.

Joanne Dean  
Headteacher

March 2017

## St Ives Junior School

The Burrows,  
St Ives, Cornwall,  
TR26 1DH



Current Head teacher: Mr Matt Allcock, from September 2017 Ms Ruth Davey

Age range: 7 to 11

The last Ofsted inspection was in 2011 when the school was rated 'outstanding'

School type: Community School

There are 237 pupils on roll

Eligibility for free school meals is above the national average

Vision: "LEARNING TOGETHER, FREE TO FLY"

Mission Statement is 'to provide high quality teaching and learning to raise the achievement levels for all pupils.'

Our curriculum, EPIC (Exciting, Personal, Inspirational, Challenging) utilises the best of The International Primary Curriculum and the Cornish themed A Sense of Place. It is underpinned by a number of key beliefs and concepts:

- Independence and interdependence which underpin what it is to have an international mind-set
- An understanding of the results of years of research into the brain and the development of brain-friendly learning and teaching strategies
- Learning underpinned with skills and dispositions which enable our pupils to be flexible, resourceful, collaborative and resilient learners
- An integrated subject approach to learning

By integrating subjects with a rigorous underpinning of the expected outcomes of learning at age related levels, EPIC provides rich, exciting and memorable learning opportunities, within a brain friendly and internationally minded curriculum.

### **EPIC has three main aims:**

- To help children learn the subject knowledge, skills and understandings they need to become aware of the world around them
- To help children develop the personal skills they need to take an active part in the world throughout their lives
- To help children develop an international mindset alongside an awareness of their own nationality



**THIS WEEK:**

**Today: REFRESHMENTS** are served after our Sunday morning services in BOTH churches. Everyone attending our services are welcome to stay and meet each other.

Monday 3rd April: 7pm The institution of Canon Andrew at Holy Trinity Church Weymouth by the Lord Bishop of Salisbury. And 7:30pm Christian Meditation in the Lady Chapel (St Ives).

Tuesday 4th April: 7:30pm Bible Study Group, Lent Study 2017 - Embrace the Middle East. Moving to the Margins by Liz Baddaley. Any one interested in attending please contact Debbie Harris on 07841 393204.

Wednesday 5th April: 7:00pm Choir Practice St Ives Church.

Thursday 6th April: 6pm St Ives PCC meeting at St John in-the-Fields annex, followed by a Joint PCC meeting with St Johns to review the Parish Profile.

Friday 7th April: 10:30am Said Mass (St Ives) Celebrant & Preacher - Malcolm Uren.

**Next Sunday Services - 9th April**

Palm Sunday  
Celebrant & Preacher  
8am Said Mass (St Ives)  
Fr Clive Morton  
9-45 Parish Mass (St Ives)  
Fr Clive Morton  
11:15am Parish Mass  
Fr Malcolm Uren

**Readings:** (9th April)

Isiah 50:4-9a; Psalm 31:9-16; Philipians 2:5-11 & Matthew 21:1-11.

A new Sunday service rota for St Ives Church starts in May, we need more volunteers. If anyone is interested in helping as Readers, Intercessors, Offertory (taking communion to the altar), Refreshments & Flowers please speak to Wendy Francis.

**Hon Asst Clergy:** Fr Malcolm Uren;  
Fr Clive Morton; Fr John Fox; Rev Chris Clements  
[stiveschurch.org.uk](http://stiveschurch.org.uk)  
[facebook.com/stiveschurch](https://www.facebook.com/stiveschurch)  
[facebook.com/stjohnif](https://www.facebook.com/stjohnif)

**Some Diary Dates:**

**Palm Sunday** - 9th April

**Bishop of St Germans Pilgrimage** - 12th April

Final leg from Lelant - St Ives - Ludgvan - Marazion - St Michaels Mount. St Ives Café will be open during the day.

**Maundy Thursday** - 13th April 7pm service at both St Ives and St John-in-the-Fields.

**Good Friday** - 14th April 10:30am Joint service at St Ives.

**Easter Sunday** - 16th April

Many people in St Ives may remember Tom Stevens who was a server at St Ia as a boy, who has died recently. There was a requiem Mass held at St Johns Upper Norwood.

Fr William Leah is very poorly at the moment and has been taken to Derriford Hospital as a result of a fall at home. A get well card has been sent from the parish.

For any Safeguarding issues with either parish please contact Wendy Francis for St Ives on 01736 794801 or Debbie Harris on 07841 393204 for St John-in-the-Fields Church.

**St Ives church 60/40 club are still inviting new members to sign up. Please contact Enid Pavey for details.** Recent 60/40 club winners are as follows:

January - Jay Fowler  
February - Marion Greenwood

**Enquiries:** Please note all enquiries regarding anything to do with St Ives or Halsetown churches should be made to the churchwardens. Thankyou

**Churchwarden contact:**

**During VACANCY**

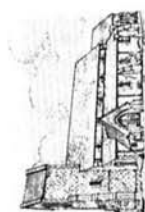
**St Ives:** Wendy Francis 794801/Mobile 07999811058  
Roger Green 449724/Mobile 07921501738  
David Miles Mobile 07798 557891

**St Johns, Halsetown:** Johanna Evans 799917

The Parish Churches of



**St Ia,**  
**virgin and martyr**  
with St Peter and Andrew, and  
**St John in-the-Fields**



**WELCOME**

**Fifth Sunday of Lent 2nd April 2017**

**THOUGHT OF THE WEEK**

Today is Passion Sunday. It refers to the beginning of our Lord's trials. All four Gospels record in great details his arrest to his Crucifixion. The word Passion, (from the Greek verb "pascho" meaning to suffer) portrays a very strong and intense feeling. Passion is not only as emotion, but a compelling enthusiasm or desire for something of vital significance. In the Gospels it's a God word. Note the word desire - And He said to them, **"I have earnestly desired to eat this Passover with you before I suffer"**. In this brief passage from Luke's Gospel (22:15) **desire and passion** are united. As we move towards Holy week, the scene is set for our Lord's entire act of love on Passion Sunday. God lays before us the Passion of his Son in all four Gospels which reaches its climax on Good Friday.

**St Ives Church**

**8am Said Mass** Rev PETER FELLOWS  
**9-45am Parish Mass**

**CELEBRANT & PREACHER** - Rev RAY WEBBER  
for the Mass:  
MUSICAL DIRECTOR: PETER LUNG - Music

OFFERTORY: BACH - PRELUDE BEFORE THE FIDDLE FUGUE.

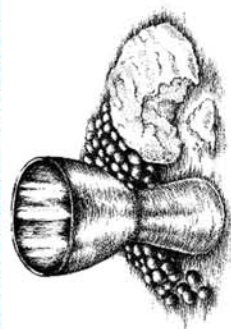
VOLUNTARY: MENDELSSOHN - FUGUE FROM SONATA #2.

ANTHEM: STAINER - GOD SO LOVED THE WORLD.

*This week pray for the sick and those in need:* Jenny Bealing, Danielle Cann, Jane Corlett, Bridget Gammon, Peter Glattback, Wendy Guthrie, David Hayes, Jean Haylett, Geoffrey Holland, Rowland Hopkins, Ann Hosking, Helen Jenkins, Berkley Jones, Elizabeth Leah, Fr William Leah, Ann Mitchell, Andrew Mounsey, Janet Phillips, David Piggott, Angela Scott, Rachael Sirl, David Stevens, Brian Sutcliffe, Ann Tinklin, Sue Webber, Peggy Williams, Sylvia Williams,

**St Johns Church**

**11:15am Parish Mass**  
**CELEBRANT & PREACHER** - Fr MALCOLM UREN



*giftaid it*

Make your gift go further at no expense to you!

**PLEASE USE ONE OF OUR GIFT AID ENVELOPES IN YOUR PEWS FOR YOUR DONATION AND SIGN IT. THANKYOU.**



## APPENDICES

---

### **Safeguarding**

The Church of England Safeguarding Children Policy 'Protecting all God's Children', has as its first principle: "We are committed to the Safeguarding, care and nurture of the children within our church community".

Within its Safeguarding Adults Policy 'Promoting a Safe Church', The Church of England's first principle is: "We are committed to the respectful pastoral ministry of all adults within the church community".

The Diocese of Truro wholeheartedly endorses these principles and wishes to provide support, advice and information to all those in its parishes who give of their time – both paid and voluntarily – to work with vulnerable adults and children.

At the heart of all that we do are relationships. The church congregation of both parishes, in which people relate to each other and in which we value every single person. It is therefore of primary importance that we take great care of every person and ensure that we have good practice in place to deal with difficult situations and to make sure that we care for each other in the right way.

Although at the moment we have no Sunday school on a regular basis we hope to be able to move forward and improve to have more weekly groups.

The handbook supplied by the diocese is a very important document and it is on view at the back of our church for all to read. It is a requirement that all P.C.C. members read it, and that safeguarding is on the agenda of every P.C.C. meeting.

Our safeguarding teams at Truro diocese is Sarah Acraman or Jane Sloan.

Our local team are Wendy Francis safeguarding co-ordinator for both parishes and Debbie Harris for St John – in-the-Fields.

We will respond without delay to every concern raised, that a child or young person for whom we are responsible may have.