

Parish profile

October 2017





Contents

About us

Introduction
Churches in the Parish
About us

The buildings

St Anne's church
St Anne's church hall
The vicarage
The curate's house
Services at St Anne's
St Francis church

It's people

Tracy Ward - curate
Olwyn Marlow - hon assistant priest
Kerrie Hickman - churchwarden
Pauline Stacey - churchwarden
Alan Ward - reader Emeritis
Paul Edwards - reader

How we work

Local Ministers team
PCC
Consultation

- Children and young people
- Communication group
- St Anne's building
- Developing St Francis

St Anne's Church Organisations

- Mission groups
- Worship groups
- Learning groups

Relationships with other churches

Support

Financial
Admin Support

The future

The future
Our aims
The role of Vicar at
St Anne's and St Francis

Introduction

Thank you for taking the time to read our parish profile. We hope that you find the information within it perceptive, appealing and engaging, and that you hold us in your prayers as you consider whether you would like to be the next vicar of St Anne's Church, Sale and St Francis, Sale Moor.

Our vacancy has arisen after the departure of the Reverend Julian Heaton after 13 year's committed service here to work in Bury. We are now seeking our 15th incumbent from the church's Victorian beginning in 1854.

The parish is on the east side of Sale, its boundaries the Bridgewater Canal, the River Mersey, the Baguley Brook and Trafford's boundary with Northenden in Manchester. Sale is a dormitory town and the parish is primarily residential with a population of around 20,000; there are a few local businesses but many who live here work in the wider North West area, making use of the great transport links. Sale Town Centre is in a neighbouring parish but Sale Moor has its own lively centre in the middle of the parish.

St Anne's is a largish, friendly Anglican Church; its tradition is liberal Catholic and its people are a diverse mix in age, ethnicity and Christian experience. We worship in a variety of styles. Our main act of worship is the Eucharist. The parish church is very close to St Anne's C of E (Voluntary aided) Primary School, which draws parents and children from across the town. St Anne's has a church hall on the opposite side of the residential road on which it is situated. The vicarage is just across the road from the church. St Francis Church, our daughter church, is approximately one mile away from St Anne's. The two churches are very different and offer different challenges and opportunities.

As vicar you will be supported by a Local Ministers Team, an active and diverse congregation and a dedicated PCC. We hope that you are interested and intrigued by this position and wish to find out more. You would be made very welcome.



Churches in the Parish

St Anne's Church

Trinity Rd,

Sale

M33 3GD

www.salestanne.org



St Francis Church

Budworth Road, off Norris Road,

Sale Moor

M33 2RP

This church, a well maintained building of the 1960s, does not currently have any regular weekly services after attendance fell to single figure numbers a few years ago. There were no baptisms, weddings or funeral services held here in the last year.

Messy Church: Monthly

Read more about St Francis on page 11



About us

As a church community our focus is to reach out to the community and beyond with the Christian gospel witnessing to God's love through word and action. We endeavour to be an accessible, active and welcoming centre for prayer and worship.

We aim to be inclusive and accepting of any section of society, believing that God's love calls us to love our neighbour regardless of age, cultural background, race, gender orientation, disability or personal issues. Through baptism, Eucharist and teaching we hope to nurture believers to discipleship within the body of Christ. We would like to be known as people of compassion and hope, and our facilities centres of welcome for our wider community.

To be called to engage local communities with the reality of God's mission is a great vocation and one we seek to live up to, by God's grace, with joy, humour and love. Our weekly newssheet has the strapline "We seek companionship with God, each other and those we meet along the way".

As Christians, we gather for worship every Sunday, seeking to deepen our walk with Christ as we listen to the scriptures and receive grace through the sacraments.

When we leave worship we engage in service for Christ in a wide variety of contexts. There are lots of Church-based activities across all ages on our calendar. However, our prime place of Christian living is in the home and at work. We put great emphasis on service to the community.



St Anne's church

Our church is a typical Victorian Gothic church in the decorated style, its oldest parts dating from 1854. Significant investment over recent years means that the building is basically sound and has a modern entrance and accessible toilet. This enables us to move on to the now pressing challenge of renewing and redecorating the interior and improving accessibility inside the building. We still have pews and choirstalls. The church has a sound system, induction loop, organ and piano though some more modern technology would improve what we could offer in worship and to others using the building.

The church has had a number of modifications over the years since it was first constructed, some extending the building, others to do with historic fire damage.

A section in the recent Quinquennial report summarises the history of St Anne's:

"The Church was built in 1854 to the designs of William Hayley. Hayley was a prolific church architect whose designs include the nearby St Matthews, Stretford and Christ Church, Heaton Norris, which has a similar spire to St. Anne's. Hayle's church consisted of a nave without aisles, transepts, chancel and a vestry on the North side

of the chancel. The following changes then occurred designed by John Lowe, another church active architect who also designed Christ Church, Timperley. In 1858 a sanctuary was added to tractarian principles and North vestry extended. In 1863-64 the South aisle added. In 1866-67 a North aisle was added with organ chamber and vestry to the South side of the chancel. The West porch added beyond the West wall.

"In 1960s fire damage saw the West gallery removed and West porch converted to the baptistery and the tower porch used as the main entrance. In the 1980s – liturgical reordering within nave. The organ was relocated into the North transept and an organ chamber converted to a sacristy. The architectural inspiration is 14th century English gothic.

"Modifications in 2009 included relocation of the entrance (North side) to the West side, font relocated and accessible toilet formed. External works improved."

There have been many changes over the years.

An extensive history of our church can be found at www.stannesale.bravehost.com



St Anne's church

General Condition of St Anne's Church

St Anne's is a Grade 2 listed building. The building has been attended to externally over the last five years in particular. The East End Window, stonework and glazing, has been repaired as well as the external guttering. There is nothing urgent highlighted in the most recent Quinquennial report. Inside the church needs decorating and the heating is old and inefficient. There are potential plans to undertake a complete internal redecoration.

St Anne's Church Hall

St Anne's church hall is in a reasonable state of repair. It was built in the 1860s and is the original old school hall of St Anne's School. A small team of volunteers keep the hall clean, attractive and in good order at present although there may be expenditure in the future as it is an old building. Currently there is nothing urgent needed to the structure of the building. The grass adjacent to the hall is mainly used by the children from the school although children like to run about on there after church services too.

St. Anne's Church Hall Use

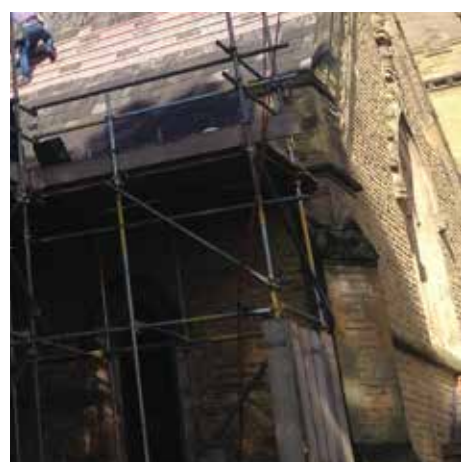
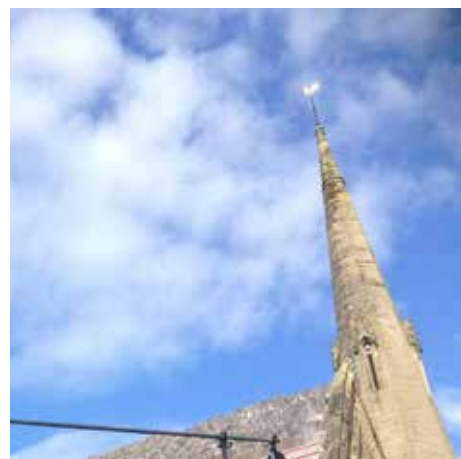
The Hall is a very busy space. It is in use throughout the week during the days and evenings. Thursday evening is the only free time and this is kept deliberately free each week for ad hoc parish events.

Regular weekly and annual events include:

For young people: sunbeams, brownies, guides, junior youth club, senior youth club, Sunday School and crèche, mums and tots, Rhythm and Rhyme, Gang Show and use by the school for after school dance club and sports.

For the more mature: exercise for the over 60s, Mothers Union, ACF, Fuchsia Society, Yoga for the over 50s, Sale Photographic Society, weekly lunch club, Traidcraft Shop and events, Route Ginger (cake stall).

There are lots of ad hoc uses: parties for birthdays of all ages, weddings, christenings and funerals; celebrations such as meals for Diwali; charity events by, for example, Parkinson's UK; educational events such as Alzheimer Research, Ashton on Mersey Art Club annual display and an election polling station.



The vicarage

The vicarage is just across the quiet residential road from St Anne's Church. It is a 1960s four bedroomed detached house with good sized private gardens. It has a garage and greenhouse as well as parking space on the drive.

The vicarage is a well maintained building with a downstairs shower, new kitchen and double glazed windows having been fitted in recent years. Downstairs it has entrance hall way, study, kitchen, dining room, living room, toilet and shower. Upstairs there is a master bedroom, 2 large bedrooms, a small bedroom and separate toilet and bathroom with shower. The loft has ladder access and is part floored.

The vicarage is within walking distance from the tram system with links to Altrincham, Manchester airport, central Manchester, as well as walking distance from Sale town centre and Sale Moor centre with its range of supermarkets, shops, cafes and restaurants.

The vicarage has a number of schools within walking distance including Sale Grammar School and Sale High School as well as St Anne's CE Primary School on the same road.



The curate's house

A curate's house, a three-bedroomed semi-detached house, is available within the parish on Windermere Avenue which is walking distance from St Anne's Church.

This property is in good order and is currently rented out as our present curate lives in her family home outside the parish. One of the current issues we have to decide in our parish is whether or not to sell this house in order to raise funds for the internal refurbishment of St Anne's Church which will require substantial funds.



Services at St Anne's

Sunday Services:

8am

Said Eucharist (first Sunday, Common Worship (CW) 2T and the others CW 1T; sermon and hymn) followed by tea and toast in the church hall.

10.30am

Parish Eucharist

- 1st Sunday Parish Eucharist and Healing
- 2nd Sunday All Age Worship / Thematic (with band)
- 3rd Sunday Parish Eucharist
- 4th Sunday Parish Eucharist with music group and organ

The 10.30am Service is CW 1 – with seasonal variations and flexibility over on All Age worship.

Each Sunday Service is followed by tea and coffee in the church hall.

Wednesday

10am Eucharist (alternate between CW1 and CW2T). Tea and coffee is available in the church hall after this service.

St Anne's is a Church which values the liturgy. Our clergy wear vestments and they are helped, not only by the choir in their singing, but by servers who help with the sacred vessels and minister at the altar.

Server Team

The serving team is made up of both male and female members – age range 13-70+ years. Our members have to be confirmed. We prepare the church for worship and assist at most of the services, both on a Sunday and weekdays, plus other special services i.e. Carol service, Christmas and Holy Week.

Chalice Bearers

We have a number of members of the congregation who administer the chalice on a regular basis, at the Parish Eucharist; they also administer at special services during Holy Week, Easter and the Christmas period.

Healing Team

Some 2-3 years ago eight members of the congregation were invited by the Vicar to form a team offering Healing on the first Sunday in each month.

It is a simple laying on of hands and a prayer is said.

Those who choose to come to the High Altar for Healing are relatively small in numbers, but growing, and often express their thanks to us.

Those of us who offer this Ministry, working in pairs, feel very privileged to do so and are aware of how important it is to behave appropriately and with sensitivity.



About St Francis

Our Vision Statement for St Francis Church is 'To witness about the Christian Gospel such that local people can flourish and embrace the presence of God in their lives.'

St Francis is situated in an area of the parish that has a higher level of deprivation than is found around St Anne's Church. It is a multi-purpose hall with a sanctuary area, a stage, ancillary facilities and meeting rooms including the curate's office. The building is in good order after significant investment in recent years. The Hall is well placed to encourage excellent relationships with our neighbours.

Though we no longer have regular services there is a congregation of South Indian Christians of the Jacobite Syrian Orthodox tradition meeting in the church on occasion.

Contemplation and Meditation

A small group from the congregation hold regular sessions of contemplation and meditation. They use mindfulness of the breath to bring the mind to a calm focussed state and then use the imaginative approach of Ignatian Contemplation to silently explore the Gospel passage for the following Sunday.

We are working on developing a more visible Christian presence within the estate around St Francis. Our curate is a member of the consultancy group who are working hard at their task. Further information about the work of the consultancy group can be found on page 19.

Throughout the week, the hall at St Francis is widely used, offering a full range of activities provided by outside users. We have good relations with all the people who hire out the facilities and have also involved them where possible in 'parish led' events. The community is involved in the hall by running a stay and play group for toddlers, Guides, Taekwan-do, Karate, all age amateur dramatics, Footsteps dance classes, line dancing and over 60s keep fit.



Its people

Curate:

Tracy
Ward



Tracy was ordained as Deacon in 2016 and Priest on 17 June 2017 at Chester Cathedral and serves as curate at St Anne's and St Francis.

Tracy had been training with All Saints Centre for Mission and Ministry from 2013 whilst being based at St Michael and All Angels Church in Bramhall which had been her parish church for the last 20 years. She is married to Martyn. They have four girls called Ruth, Emma, Holly and Anna and live in Bramhall near Stockport.

Tracy grew up in a small village outside Accrington in Lancashire but moved to Manchester to train as a nurse at North Manchester General Hospital. On qualifying she worked in various hospitals around Manchester as well as in Leicester but eventually left nursing as her family grew bigger.

Hon. assistant priest:

Olwyn
Marlow



Olwyn was ordained Deacon in 1989 and was amongst the first women to be ordained Priest in 1994. She has worked in Baguley and Brooklands and as a chaplain at Manchester Royal Infirmary. She's married to Tim who's a retired teacher and they share their home with four cats. In 1999 after extensive spinal surgery she had to retire on health grounds, since then Olwyn has helped in various parishes and has enjoyed being part of the life of St Anne with St Francis for over 10 years.

Churchwarden:

**Kerrie
Hickman**



Kerrie was elected as Church Warden in September 2014. She was born in Sale Cottage Hospital and moved to the area aged seven. She attended St Anne's Primary school in the 'Juniors'. Kerrie was a Sidesperson for many years and administers the Chalice. After retiring from the civil service last year she now works for a charity in Sale. Her particular interests are worship, gardening, animals, neuroscience and sport.

Churchwarden:

**Pauline
Stacey**



Pauline was elected as Church Warden in 2017. She was born in Whitburn, Sunderland and moved to Sale in 1987 where she began married life with husband Paul. They have been members of St Anne's Church for many years and have both sung in the choir. Pauline is a Teacher of the Visually Impaired for Trafford Council. She enjoys cycling, trying out new recipes, and distantly following Sunderland AFC, although she is unsure if the latter one can be called an "enjoyment"!

Reader:

**Paul
Edwards**



Paul has been a Reader here at St Anne's since 1983 when he moved to Sale and is actively involved in the parish as a member of the Local Ministers Team. He is married to Sylvia, who is in the Choir. They have two grown-up children, Jonathan and Caroline. He is now retired, having spent nearly 30 years as a teacher of Religious Education, and latterly as a Head of Year, in high school in Wythenshawe, Manchester. Currently he is the Parish Safeguarding Coordinator. His interests include travel, theatre, music and sport - he is a passionate Sale Sharks supporter!

Reader Emeritis:

**Alan
Ward**



Alan moved to the parish in 1964 with his wife, Hazel. They have two grown up children and five grandchildren. Both retired from teaching around 1990. Alan has long been involved in Small Group work and was licensed as a Parish Assistant in 1991, remaining in this ministry until he became a Reader in 2005. Currently Alan is involved in the parish in a number of areas and his interests include DIY, travel, walking and theatre.

Local ministers team

Up to now, this group is made up of clergy (the previous incumbent, the curate, hon. assistant priest), Readers and children's leader (the previous incumbent's wife).

The two readers run groups (one weekly, one monthly). The clergy and curate run Adult Sunday School once a month between the 8.00am and 10.30am services. One of the readers meticulously draws up the Rotas. The team meets regularly (4-6 weeks) to

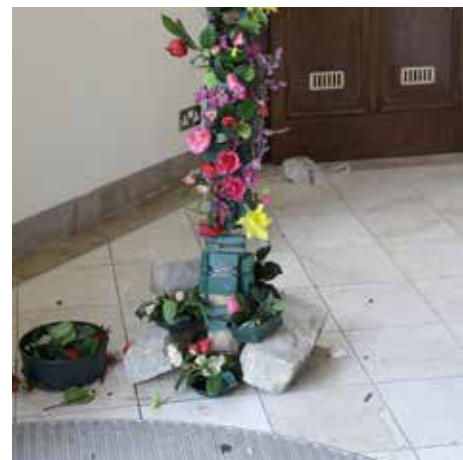
talk through practicalities (rotas and forthcoming services), ministerial issues (sick, pastoral issues), worship matters (seasonal orders of service, All Age focus, new initiatives), educational matters (themes for Advent, especially the home grown Advent Reflection booklet, Lent, Ordinary Time [we spent ten Sundays looking at Genesis in Ordinary Time in summer 2017], Adult Sunday School themes) and mission initiatives.



PCC

Election to the PCC is on a yearly pattern and this contributes both to continuity of wisdom and new energy and insight.

The PCC meets about 6 times a year. The Standing Committee and the PCC receive minutes from the Consultancy Groups and presentations from them, in order to coordinate activity and share knowledge of what is going on in different departments of the parish.



Consultancy

The Consultancy Process at St Anne's started in 2016. The Diocese of Chester, via the Committee for Ministry, offers consultants free for issues any parish has and we sought wisdom from an external consultant to help us move forward. Through exhaustive conversations, our consultant (John Jones) helped us identify four key areas to be focused on: St Anne's building, the future use of St Francis, work with children and young people, and communications.

Four groups were established, with membership from the PCC and beyond, bringing in skills and experience and enthusiasm. Each group has a remit, agreed by the PCC, and meets regularly, reporting to the PCC. The PCC agendas reflect the Consultancy's centrality to the mission and ministry of the Parish. The incumbent and wardens attend these groups occasionally, the incumbent rather more for those which are ministerial focused, the wardens regarding the fabric.

These groups drive initiatives and much that has gone on over the past year has occurred through their work. It is a system that has released much good will and energy. The theme of consultation is valued as it buys into the idea that God's people have a stake and say in what happens in their community.



1. Consultancy: children and young people group

Children and young people was one of the areas of concern when we undertook the consultancy process in 2016. The reason for this was twofold: we were concerned at the number of young families who drifted away from Church once the children reached school age, or slightly older; and that as there are not very many teenagers at St Anne's, those who do attend may not feel that they are very well catered for.

The group started with four members, but after losing two members, the membership will have to be reviewed.

On the children's side we have held three social events, to try and get to know the young families better, and make them feel more involved. We hope this pattern will continue, and that as parents get to know each other better, they will feel more inclined to continue attending Church and Sunday School, or Sunbeams.

On the young people's side we have made contact with Trafford Youth for Christ and received some support from them including a presentation during a Sunday service. The Friday night youth group has been involved with a number of projects, such as a sponsored sleep over, and the reverse Advent Calendar, which connects them to the wider Church. Further work is needed to engage our Youth Groups. We are willing to try out a different kind of service for teenagers and students.



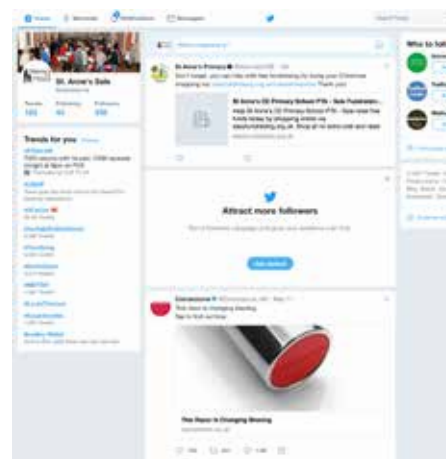
2. Consultancy: communication group

Initially we decided that communication, both inside and outside church, informs, enables feedback, enables the parish to run smoothly so that people feel welcome and know what we do and enables us to share the Gospel.

Such a wide range of linked items fall under the umbrella of "communication" that it is difficult to make a simple list of these. If we bear in mind those criteria which underpin our vision statement we can use them to develop "communication" in areas such as location including signage both external (notice boards, directions) and internal (noticeboards, labels and directions); publications for in-house and community and faith journey (service sheets, booklets, leaflets, newsletter, magazine, organisational information); web based (focusing specifically on our web site and Facebook); accessibility (language, hearing, visual, physical access); welcome (via clergy, sidespersons, congregation, organisations and small groups); and subliminal messages (from buildings, people, the range of activities, the way we do them).

Progress so far: Large print service books and newsletter are available at current main services to complement the large print hymn books and further service sheets for changing seasons are being produced; an updated 'job description' for sidespersons is in development to enhance welcome; a 'New to/Welcome to St Anne's' leaflet has been produced to be distributed at Office Hour; (an hour set aside in the week when people from the parish can come and make an arrangement for a baptism or wedding) the induction loop is being tested by congregation members to see if there are any hotspots where reception is better; the Church Hall notice boards are in process of being upgraded; and volunteers have agreed to manage our web site, Facebook, Twitter and A Church Near You during the vacancy.

Improvements to signage are in hand and the St Francis group has material ready for printing to promote what happens there.



3. Consultancy – St Anne's building

At a meeting of the PCC held on 13th August 2015, following much work to investigate possibilities, a number of resolutions were passed in respect of heating, seating, lighting, kitchen, floor and decorating. Subsequently, however, limited work was undertaken to progress these items.

Following the consultant's involvement, one of the four key areas identified was the reconfiguration of the church building and the fund raising to finance it.

To take this forward, a consultation day was held at St Mary's, Partington, on 12th December 2016. The following was noted:

This is an important development ...

... **because** we need a space that is 'fit for purpose'

... **so that** we reach out to the wider community with a building that honours God

- A shared vision was that the outcome would be:
- warm (heat);
- welcoming (decoration);
- bright (light);
- audio-visually enhanced (music, sound system, etc.);
- comfortable (seating);
- accessible (floor levels);
- flexible use (space);
- additional facilities (catering, toilets, meetings, events, etc.).

A small working group was established and has met on a number of occasions, setting a number of objectives:

Agree a project brief (e.g. meet early; sharing, etc.)

Develop the project brief (e.g. professional advice (architect, etc.); planning (and faculty); quotations; etc.)

- The working group is currently seeking to engage an architect to develop a scheme.

Communicate the brief (e.g. widen the audience)

- Two sample benches have been placed in church, for comment. Our plans include appropriate consultation with the congregation as we make decisions.

A fund-raising plan is needed.

- A paper was submitted to the PCC about the options surrounding Windermere Avenue as a potential asset that could be used to provide funds. This is a three bedroomed house that can be used by curates in the parish if they choose to do so. Our current curate lives in her own home outside of the parish. Fundraising is an area where the working group requires additional expertise.
- Visits have taken place: St George's Church, Poynton; St Mary's Church, Ashton-on-Mersey and at St John's Church, Lostock Gralam.

A draft 'statement of significance' has been prepared, as well as a draft 'statement of need'. Feedback is awaited from the PCC. Some indicative sketches were prepared, for use in discussions with potential architects. Many in church are excited to see how this is going to develop.

4. Consultancy – developing St Francis

From the established Food Bank at St Francis has recently grown a weekly Tea and Toast Drop-in which is attracting a varying demographic of people from mums with toddlers to adults with varying needs. We are hoping to develop this 'drop-in' session further.

Listening to the needs of local people, within the last six months we have also started a weekly 'Needles and Natter' session which is steadily growing. This is attracting differing people from around the parish who are growing into a small community focusing on making friends and supporting each other, fundraising for local charities and supporting St Anne's School.

We also have an experienced team of people who organise 'Holiday at Home' during the summer holidays and at Christmas time. This is very well attended by the older, local members of the community and well supported by the Bramhall Close sheltered accommodation group.

Once a month we also offer Messy Church sessions. We are trying to develop this provision and also the regular events listed above in a recent leaflet we have designed which will be distributed locally.

Links have also been established with Lime Tree Primary Academy, a nearby school, who have been to various events we have held for the children from the school, including a Christmas Carol Concert and 'Experience Church' and 'Experience Easter' events, which have been well received.



Mission, Worship and Learning

Overseas Group

The aim of the Overseas Group is to develop the relationship between our parish and congregation and the world wide church in mission. The 'Givings' policy was reviewed a short time ago and with a new set of values and a renewed commitment we now partner three mission agencies on a long term basis. We hope to ensure a lively engagement through prayer, practical and financial support and to broaden our insight into what it means to be Jesus Shaped People. Our Mission partners are our local Trafford Youth for Christ, the Bible Society (an Open the Book team has been set up with local churches to take Bible stories into primary schools) and United Society Partners in the Gospel (USPG) and through them we are a Partner in Mission with 'Education for Change' and the Church of Ceylon. We also support a mission agency on a short term basis, currently the Church Army.

In addition, we are responsible for developing our link with the Boaz Trust who support destitute asylum seekers in Manchester and for fulfilling our commitment as a fair-trade parish. A small, separate team run a Traidcraft outlet with a stall in church, a larger stall fortnightly in the Church Hall and selling to other churches and at occasional events.

The Overseas Group is a dynamic and creative team and take any and every opportunity to encourage our parish and congregation to share in God's Mission.



boaztrust
serving destitute asylum seekers



Baptism sponsorship, marriage preparation, bereavement support

We offer support around the time of baptism, marriage and death.

Baptism sponsors provide a link between the baptism family and the church. Baptisms take place at the 10.30am service or at a separate service at 12.30pm.

The sponsor makes contact with the family ahead the preparation meeting which is usually 1 or 2 months before the baptism and which the sponsor attends.

At the child's baptism the sponsor is at the back of church to welcome their family. During the service the sponsor stands with the family and godparents, signing the child with the cross and making the promises along with the family and godparents. The sponsor takes a role in the service by reading the prayers at the end of the service and handing out the certificates when the service has ended.

If the baptism has been a 12.30 service the child and their family are invited back to a Welcome Service, usually on the second Sunday of the following month. The sponsor contacts the family to ensure they remember to come to the service and waits at the back of church to welcome them when they arrive. The sponsor then sits with the family during the service helping them through it. The 'welcome' happens just before the Peace where the family come to the front of the church where they are given the child's baptismal candle and the baptism certificate and welcomed with a round of applause. (If the baptism happens at the 10.30am service this is done at the end of the baptism.)

Following the baptism the sponsor stays in contact with their families and invites them to specific services and events, for example Christingle services.

We also offer a Marriage Preparation course consisting of two parts both modelled around communication skills.

Part One is for the candidates to do together at home and consists of a number of exercises, some light-hearted and some more serious.

Part Two consists of an evening meeting includes short videos and talks, practice in communication skills by the candidates and a short outline of what happens during the wedding service. Should there be an insufficient number of candidates to make this evening session viable then an individual meeting will be held between the candidates and the officiants.

We also have a small but dedicated group of volunteers who visit the next of kin of someone whom has died (if they live in our parish) or telephone them if they don't, where one of our Local Ministers Team has conducted their funeral. The volunteers offer support, which is usually just listening and anything else that might be requested such as cancelling the parish magazine, popping to the shops or just passing on grateful thanks to the minister concerned. No reasonable request refused! However they are NOT trained counsellors and pass any concerns on to the vicar. With fewer funerals conducted by clergy nowadays, the team that we have at the moment is adequate.



St Anne's Choir and Music Groups

Our choir is a four-part choir with some thirty eight enthusiastic members whose ages span at least sixty five years. Rehearsals are on Friday evenings, with the Juniors beginning at 6.45 pm and the Seniors arriving later and staying longer.

The Juniors are trained in the "Voice for Life" scheme of the Royal Schools of Music and they progress through their "in house " badges before achieving their Dean's and Bishop's Awards. As well as developing skills in traditional church music, they enjoy preparing more secular and jazzy pieces of music for performance in Parish Concerts which are normally held in the summer.

The full choir leads and presents various styles of music, both "ancient and modern". We sing anthems regularly as well as for special feasts and holy days. Larger scale works such as Faure's Requiem, and Vivaldi's Gloria, have been prepared for special occasions. At Christmas, carols sung in the open air in the town centre raise money for charities, and we also visit local residential homes. We go singing round the wards of our local hospital on Christmas Eve - a tradition going back some thirty years.

At the All Age Service, held on the second Sunday of each month, an instrumental group accompanies our singing. On the fourth Sunday there is a slightly larger band with some younger wind instrumentalists involved as well, helping to give them the experience of playing in public as their skills grow. Both these groups are drawn from the congregation and the choir - typical of the team spirit in the music-making at St Anne's with St Francis.

Fundraising for the Church and for charities is an extension of our weekly commitments, with coffee mornings, cake stalls, concerts and singalong sessions. Social outings are arranged for Juniors, and Seniors, to suit their various interests.

There is a splendid two-manual Wadsworth tracker organ in the church in good condition. The organist plays for weddings and funerals as well as for Sunday services.



Adult Sunday School

Adult Sunday School meets on the first Sunday of each month from 9 to 10am in the Church Hall. This is an informal session taking the format of discussion around a shared table over tea/coffee and toast. Topics vary widely depending on the person leading the session and have ranged from a summer season on 'Genesis', a session exploring 'keeping the Sabbath', guests speakers from varying charities that we support,

to a Lent series called 'Faith Pictures' exploring faith and building our confidence in ways we can share the good news with others.

The aim of Adult Sunday School is to develop a space where people can feel they can ask questions, share doubts, learn and grow in their faith in a relaxed and friendly atmosphere where all people's contributions are welcomed; a space where we all learn from each other and grow together.



Home study groups

We have a number of home groups that explore the Christian faith. There are three groups running at the moment: one fortnightly on Thursday afternoons (current topic - The Twelve Disciples), one fortnightly on Tuesday evenings (current topic - 'Sermon on the Mount' - John Stott), and one fortnightly on Thursday evenings (current topic - Psalms).

Themes are chosen by the group members except that during Lent we usually follow a common theme and have additional groups in operation. The study groups and the wider church community have access to a range of books on the church bookstall which are replaced on a regular basis and offer a wide range of Christian faith topics to explore.



Children's Church/Sunday School and Crèche

St Anne's welcomes many families to our Sunday worship. Some come into Church and stay through the service. Others start in the Church Hall where there is both Sunday School for children above 3 years old and a happy crèche space for smaller infants and toddlers. Sunday School offers a time of worship, bible stories and activities to help the children (and their parents!) learn more about God's love for them. The curriculum follows the same cycle of readings from the bible as the adults experience in Church across the road.

On the Second Sunday of the month parents and older children are encouraged to join in the service in Church which is an All Age Service. The crèche continues for younger infants who come over to join us in the service later on. When there is a fifth Sunday of the month there is no Sunday School.

We are committed to ensure that all, children and adults alike, feel safe and loved. We keep a register of all children who attend.



Messy Church

Messy Church takes place at St Francis, on the first Saturday of the month from 3.30pm to 5.30pm. It has been running for 5 or 6 years. To start with it was held about twice a term, with themes such as Harvest, Christmas, Easter, Pentecost and summer, but after the first couple of years we started to meet every month to keep the momentum going. We still observe Church festivals, but other months use the theme of the next day's gospel or pick an Old Testament story. There is a small team that plan and run the activities.

Most weeks there are about 12 children and 8 adult attendees. The afternoon follows the pattern set by Messy Church, there are at least four tables of activities when everyone arrives, there is then a time of worship, followed by food and drinks. The activities sometimes involve games, often food such as icing cakes, and lots of craft and painting.



Youth Group

The Youth Group is held each Friday evening during term time for children between the ages of 8 and 11 in St Anne's church hall. It is run by two leaders with the help of five other adults all of whom are members of the congregation. Three teenagers also come and give their help.

We have about 42 children on our books and also a waiting list. The children enjoy a variety of different activities and these vary from the summer months to the winter.

In summer they are mainly outside and enjoy football, basketball and swing ball. In the darker evenings we have softball football, X Box and Wii, table tennis, snooker and various table games.

There is also a Tuck Shop. There is a very limited spiritual element within the Youth Group activities at present and finding space for God is a needed development here.

Senior Youth Group

Senior Youth Group is held on a Friday evening from 8pm until 10pm during Term time. It is run for young people in Year 7 and upwards. There is a rota for Adults which usually means that they are on duty once every six weeks. It is a very relaxed affair where we leave the young people to play games or sit and chat. Last year they were involved in the Reverse Advent and held a Sleep Over to raise funds for the Church Urban Fund.



Sunbeams

Sunbeams, our After-School Church was begun in 2006 as a response to church parents expressing anxiety that their children were beginning to get into Sunday-based sports activities. It runs weekly in term time after school in the Church Hall which is immediately adjacent to the school. Its rhythm, presently, is that the children spend half an hour "decompressing" after the school day with play and refreshments including hot drinks for parents/carers who stay throughout, followed by worship, activity in response to the bible reading and ending with a time of reflection and prayer.

The themes taken have varied over the years. Our present pattern is to draw on the lectionary and to use ROOTS (ecumenical material) as the initial source for craft activities.

On the plus side, this is a fabulous way to extend Sunday School and, as parents are around all the time, the teaching is heard by them. Our attempts to nurture parents in the faith have been markedly less successful but the Consultancy Children and Young People's group has begun an initiative to weave the two groups together through social activity.



Mothers' Union

St Anne's has a flourishing Mothers' Union: 36 members with an average attendance of 25 at monthly evening meetings and 10 at a monthly afternoon prayer group held in the leader's home. The branch leader is also the Deanery Contact for the other four branches in the Bowdon Deanery.

We successfully fundraise for the church as well as for MU projects at home and overseas; every Christmas we take presents to Trafford Women's Refuge. This year we supported one of our members who took part in a Women's Mission Trip to Uganda – a pink project – by donating knickers and sewing toilet bags by the dozen.

Last year we won prizes in the Chester Diocese MU 140th anniversary year competition with two of our entries – best cake maker and most original fund raiser. The apple of our eye though is the Moira Garnett Prize for Public Speaking – named after a past branch leader/ MU speaker trainer. For six years this project has allowed key members access into local schools to oversee pupils researching the work of the Mothers' Union before entering their presentations in a competition for the trophy. In this way we bring in-depth awareness of the work of MU to a hundred young people each year plus their parents and teachers; and keep alive the memory of an amazing woman.



Lunch Club

This is a group of our congregation members who provide a weekly hot meal in St Anne's church hall at a low cost to anyone who wishes to come. Many who do come are elderly and enjoy companionship of others as well as home cooked style food. There is often a shortage of volunteers for this community work and the Lunch Club only runs because of the commitment and hard work of a few committed helpers. To have a safe future the Lunch Club needs more volunteers.



St Anne's Church of England (Aided) Primary School

The school, across the road from the parish church, is encouraged and supported by St Anne's Church by prayer, by finance, by guidance through governors, and through volunteers in the classroom. St Anne's provides 8 out of 15 governors and presently the Chair and Vice Chair are both members of the congregation. The school is a one-form entry school with a nursery, one of few in the Borough.

The Church runs an After-School Church called Sunbeams during term time (see below) and the clergy take a collective act of worship once a week. In autumn 2017, Churches Together in Sale started to roll out Open the Book on a half termly basis and St Anne's was the first school to benefit from this.

School comes into Church for various acts of worship (Harvest, Nativity, Carol Service, Easter Assembly, and Leavers' Assembly). They also have an assembly in Church on the first Thursday of the month, as well the assembly taken by the ministers every Tuesday in school. Year Six children are invited to walk our labyrinth as they prepare to leave and are given a book about how it feels to change school as well as being given a bible from the Church at their Leavers' Assembly. St Anne's admits children to communion from the age of 8. Classes for this are run in school and children are admitted on Easter Day (or later if their birthday falls later).

We observe Education Sunday, setting its date (traditionally the second Sunday in February) to fit around the school timetable and avoid half term holidays. The clergy spend time with one class, preparing them to participate in a non-Eucharistic act of worship on a Sunday morning. Other contributions, from the school choir and musicians and sometimes from the parents, enhance this.

A new Head teacher, Polly Goodson, began in September 17 and she is keen to improve and develop links between the new vicar, the parish and the school. The new incumbent would also be a governor on the school governing body.

You can find out more about the school here;
<http://www.st-annes.trafford.sch.uk/>

Ministry to other schools

Building relationships with other schools has been a growing part of ministry in our parish; Sale Grammar School and Sale High School pupils visit in groups in autumn. Primary schools visit Experiencing Christmas and Experiencing Easter. Our curate Tracy has been building effective links with Lime Tree Primary Academy. Our link with Trafford Youth for Christ means we are aware of their work in the local schools. Developing links with young people is an area we wish to expand on and develop further.



Uniformed organisations

Girl Guiding in Sale Moor

St Anne's has always had a close association with the Girl Guiding District of Sale Moor.

There are two Rainbow Units for girls of 5 to 7 years of age that meet on Mondays and Wednesdays at 5pm at the St Anne's Church Hall. These units have been set up for over ten years as a result of the work of Jackie Heaton. Each unit has up to 20 girls and provides for girls of a young age an excellent introduction to Girl Guiding.

There are currently three Brownie Units (girls 7 to 10 years of age), one meeting at the Church Hall also on Wednesday evening with a second meeting on the other side of Northenden Road at the Scout Hut. Each unit has between 25 and 35 girls led by very experienced leaders.

A third smaller unit meets on Tuesday evenings at a further nearby Scout Hut. The waiting list for these units is such that there is a proposed fourth unit to meet on Tuesdays later in the year.

There are also two Girl Guide units for girls aged 10 to 14 years of age, one meeting at the Church Hall and one at St Francis Hall, both on Tuesday evenings. And there is also a small Senior Section (Rangers) unit for girls over 14 years of age, meeting at Trinity Methodist Church Hall on Thursday evenings.

St Anne's gives active encouragement to all aspects Girl Guiding and the units are invited to the Sunday morning service, notably at Harvest, Remembrance and Mothering Sunday.



Scouting

St Anne's also supports Scouting. The St Anne's Scouts, Beavers and Cub units meet at the Scout Hut next door to St Francis. The Scout units come to St Anne's for Remembrance.

In the past there were many more parade Sundays for Scouts and Guides, but these parades have lessened in frequency and in attendance.

Organisations - Fellowship

St Anne's Fellowship Group

This a group of men and women who meet monthly together in St Anne's church hall for an afternoon listening to speakers and enjoying Christian fellowship over a cup of tea.

We understand the importance of fellowship to our elderly church community and would wish to support them in providing opportunities to meet together.

"Thursday Girls" Women's Group

This is a group of women who meet on the last Thursday of the month for a range of activities. It is a chance to meet different people and our activities have included craft, line dancing, theatre trips,

and quiz nights. We email out what is happening to our email group and advertise in the weekly St Anne's church pew sheet, "Inspiration".

Book Group

The Book Group has been running for 12 years. It meets in the home of one of the members. Most members are from St Anne's but there are also others who belong to other local churches, or are infrequent church attenders. Occasionally a book is discussed with Christian themes or theological insights,

but usually we pick a popular fiction or non-fiction title that has been selected by one of the members. The group meets once a month and the title for the next but one meeting is decided on, so that we usually have a two month time scale to acquire and read the book. At the meeting questions are discussed, there is usually plenty to say.

Parents and Toddler Group

Every Friday in the Church Hall, the Mums and Toddler group provides a time for adults (mums, dads, grandparents, carers) with young children to meet and play. Refreshments are available.



Relationships with other churches

There is a lively Churches Together in Sale Group comprising representatives from four Anglican, three Methodist, two United Reformed, and one RC church in the Sale area. It meets quarterly. This group holds quarterly services in each church in turn. St Anne's lay representative is currently Secretary to the Group.

There is an annual away day – this year it was a pilgrimage to both Liverpool cathedrals. We work together on Homelessness and Poverty issues. The two Foodbanks in Sale are staffed by members of all churches; one of which is in St Francis church.



Financial

Financial management

We have treasurer and an assistant. The finances are well administered and the PCC are provided with sufficient information to be able to comment on our situation and plan for the future. The parish lives within its means and is able to give away 10% of its income from regular giving. An able team of helpers smoothly runs the cash side of the process on a Sunday.

Financial position

2016 saw an income of around £154,000 and expenditure of £156,000 including significant expenditure on St Francis and 3, Windermere Avenue. The year-end balance was £129,000 but significant recent expenditure on the roof, gutters and, currently, the East window, will have required over half of our current reserves. After all expenditure on these repairs has been paid we will have a balance of around £55,000.

Where St Anne's struggles presently is in the lack of significant money raising capacity. Committed regular giving accounts for 49% of our income and that is after a "giving in grace" initiative in autumn 2016.



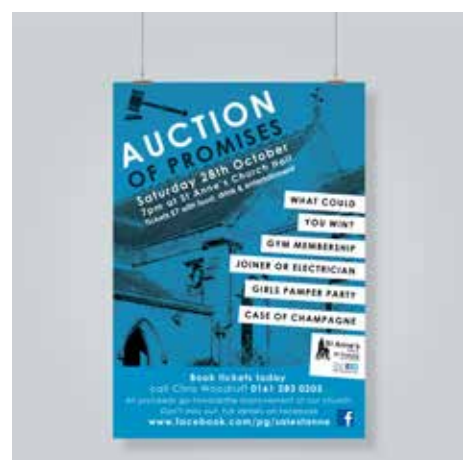
Admin Support

Publications and Media

We have a simple weekly newssheet, "Inspiration", distributed to all attending services. It is also loaded onto our website on a weekly basis along with the weekly sermon. The Spire is a commercially printed monthly magazine which reaches a little further into the community but mainly goes to regular church goers. Local shops and business can advertise in the magazine. We have an extensive website and a social media (Facebook and Twitter) presence that we need to improve. The previous incumbent has used Mail Chimp to communicate regularly and widely.

We are currently producing "welcome" leaflets for St Anne's and St Francis. In addition to stocking other routine, seasonal and ad hoc material, we have for the last few years produce an Advent booklet of daily reflections written by a number of members of the congregation.

We are fortunate to have members with professional presentation and design skills and this has enabled us to present ourselves, our activities and our concerns attractively.



The Future

In recent years we have built an increasingly diverse worshipping community and we need both to consolidate and to further this. Recognising the significant footfall in both churches, hall and school we need to enhance our ministry of welcome and engage more effectively with newcomers and those on the periphery of the fellowship.

We have encouraged wider participation by offering a range of styles of worship at both the main 10.30 Sunday Eucharist and the other Sunday and midweek services; and with music supported not just by organ and choir but piano and two instrumental groups. But we are open to explore the possibility of the continued development of new services, perhaps not always on a Sunday. We wish to engage with teenagers, youth groups and young adults in particular and are willing to consider a style of worship that would attract and involve them. We are nevertheless sensitive to and aware of the needs and wishes of our elderly and more traditional community and would wish to continue to be so.

We also need to develop new and more effective ways of bringing people from participation to committed and informed discipleship.

We would like to communicate better with our local community and to engage them in our events, worship and mission. We believe that the refurbishment of our church would help us offer more to the local community and encourage more people of all ages to come inside our church and get involved in the parish's activities.

We would like to continue with the work of our consultancy groups (Buildings and Finance, Development of St Francis, Children and Young People and Communication) and see the sustained progress of what has been achieved so far.



Our aims

Our current objectives are:

- Improve the interior St Anne's church so that it offers a warm, welcoming, flexible space; and manage the successful fundraising that will be needed.
- Sustain and develop St Francis both promoting community activities and allowing space for God.
- Develop opportunities for children and young people to engage with God through links with our local schools both Primary and Secondary especially our voluntary aided school St Anne's as well as developing services for teenagers, and young adults.
- Improve our communication and connection with the local community, providing a more effective welcome and using an improved interior space at St Anne's to provide greater community involvement.
- Increase our finances and money raising capacity so that our buildings can be maintained and improved and that we have funding available for our mission to others.
- Develop our ministry of pastoral care in partnership with clergy and lay people.



The Role of Vicar of St Anne's and St Francis

We are looking for a person that can communicate their deep Christian faith to all ages in our Parish in imaginative, thoughtful ways. We need someone who shares a view of upholding the traditional elements of the church, but able to implement new ideas bringing us closer to God and to our community.

We would like a vicar with commitment to stay for a sufficiently lengthy period of time to build on the foundations of the former incumbent and existing congregation. One who has maturity, authority and suitable experience to lead a church with high expectations.

To fulfil this role you will need:

- A good sense of humour (the most frequently mentioned quality mentioned by our congregation)
- A robust support network. We realise this is a challenging and sometimes stressful post with many demands.
- A collaborative leadership style and able to work with people using different approaches.
- A positive and supportive approach to our choral and music tradition which we treasure.
- An ability to look afresh at our parish and our gifts and help us grow a new vision whilst valuing our traditions.
- A willingness to engage with the challenges of increasing our finances so mission can flourish.
- An imaginative approach to scripture and able to engage with all ages in the Parish.
- A kind priest with a pastoral heart.
- A good communicator.



The Role of Vicar of St Anne's and St Francis

At St Anne's we aim to support all members of our community to become more aware of and to respond to God in their lives. Members of the congregation, both young and old, are encouraged to be part of the worship team, led by the vicar, from Readers, Servers and Intercessors.

With the vicar's lead and support we explore together, creative and reflective ways to encounter the living God through prayer and reflection. We offer quiet days both in church and accessing diocesan and retreat house quiet days, providing reflective resources to use during the different seasons in the church's calendar and developing our prayer space and its resources in St Anne's Church.

We aim to support all ages and all stages to grow in their discipleship by continuing to be open to find creative ways to help people nurture their faith. St Anne's is a space where we encourage questioning, enjoy exploring and growing in our faith together. No question about faith is silly. We need a vicar who can help, encourage and guide us in this work.

We would like to see in our new incumbent a vicar who will be comfortable working with lay and ordained colleagues and seeks to further develop this collaborative opportunity, as we consider ourselves to be a training parish. One who would have the courage to be innovative but sensitive, show initiative and be rooted in prayer and the sacraments.

We can offer you:

- ✓ A welcome inclusive congregation
- ✓ A caring and helpful Ministers Team
- ✓ A supportive and willing band of church volunteers
- ✓ A friendly and engaged PCC
- ✓ A new and welcoming head teacher in our church school
- ✓ Active and committed church wardens

